

Bikes are permitted on Metro buses and Metro Rail Trains. For rules and more information please visit <http://www.metro.net/bikes/>

## Taking Bikes on Metro Buses

All Metro buses have two bike racks on the front, except for Orange Line buses, which have three bike racks. Always approach the bus from the sidewalk, watch your bike while on the bus, and let the driver know at your stop that you will be getting your bike. Watch a video with [security tips for taking bikes on Metro buses](#).

### Rules for Bikes on Metro Buses

- > Arrive at the stop a few minutes early and wait on the sidewalk.
- > Remove all loose items not attached to your bike (i.e. bags on handle bars, helmets, lights, etc.) and take them with you onto the bus.
- > Locking your bike to the bus rack is not allowed. For extra security, lock your wheel to the frame before the bus arrives.
- > Wait for the next bus if the rack is full.
- > You are responsible for [loading and unloading your bicycle](#). Wait until bus is fully stopped before loading your bike. Always approach the bus from the sidewalk.
- > Sit or stand near the front of the bus to watch your bicycle during your trip.
- > Just before your stop, tell the bus operator that you will be getting your bike from the rack and exit through the front door.
- > Never try to retrieve something that rolls under the bus.
- > Use elevators or stairs at transit centers and bus facilities. Bikes are not allowed on escalators.
- > Folding bikes with 20 inch or smaller wheels can be taken on board. Make sure your bike is folded and stored under a rear seat so as not to block aisles and doorways. Motorized folding bikes are not allowed.
- > Bicycles over 55 pounds cannot be accommodated on Metro bus bike racks.



## Taking Bikes on Metro Rail

Bikes are permitted on Metro Rail trains at all times. If train is full, please wait for the next train. Enter at doors marked with this symbol:



### On Red/Purple Lines

Look for the designated open area to accommodate bikes and other large items at the end of the car.

### On Green and Gold Lines

Please stand with your bike in the designated area marked with the symbol above.

### On Blue and Expo Lines

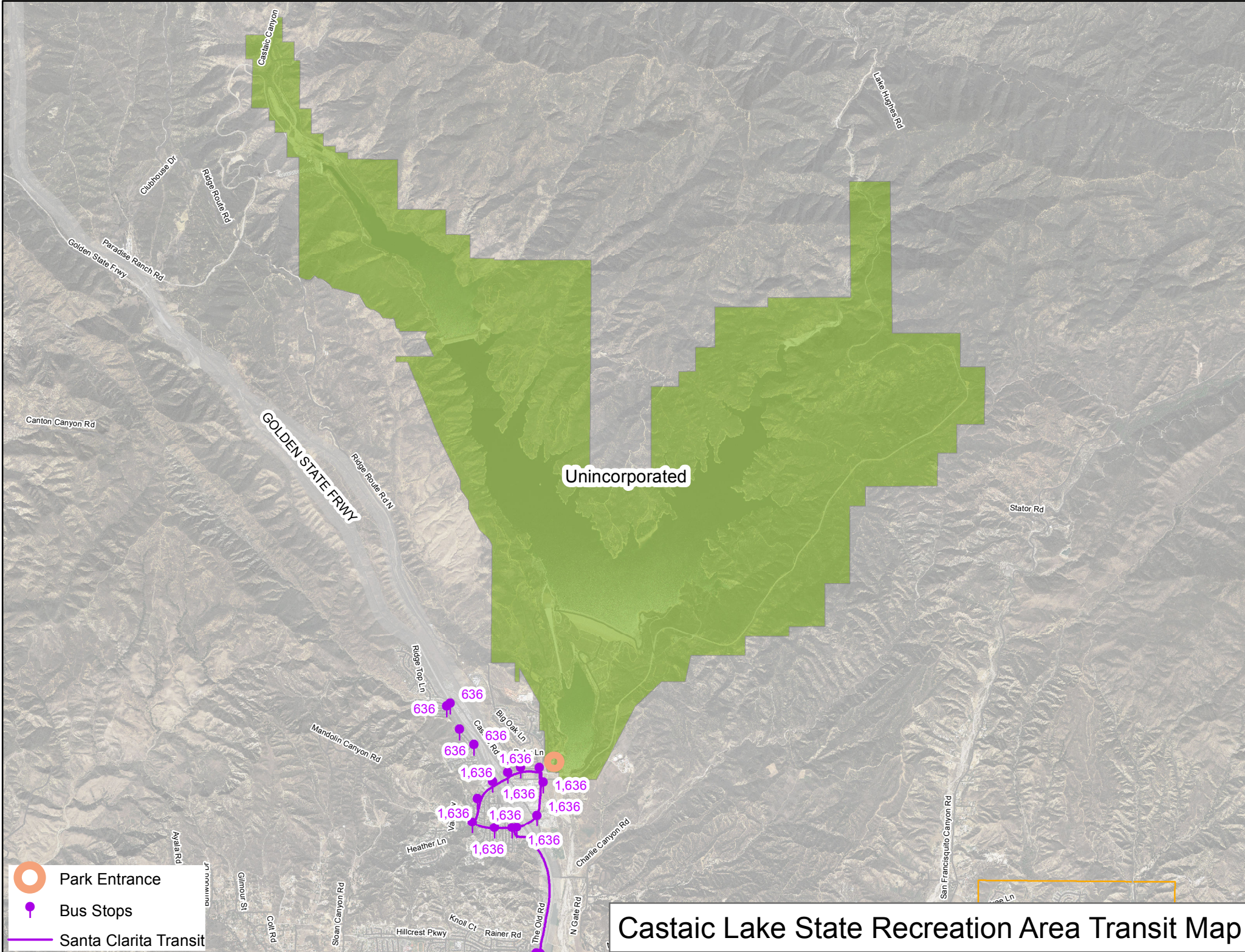
Please stand with your bike in an available area at either end of the rail car.  
**Exception:** Bikes are not permitted in front of the operator's door in the lead car.

### Rules for Bikes on Metro Rail

- > Follow ADA-accessible routes to find elevators and wider, wheelchair-accessible gates, to safely bring your bike in and out of stations.
- > Always walk your bike through stations and on train platforms.
- > Wait for the next train if the train is crowded.
- > Avoid parking your bicycle behind operator's cab in lead car.
- > Always keep doors and aisles clear, and be courteous to other passengers.
- > Give priority to wheelchair passengers in designated areas.
- > Always stand with your bike in the designated open area while on board the train.
- > Use elevators or stairs to enter and exit the station. Bikes are not allowed on escalators.
- > Folding bikes are encouraged and allowed on board. Make sure it is properly folded.







Park Entrance



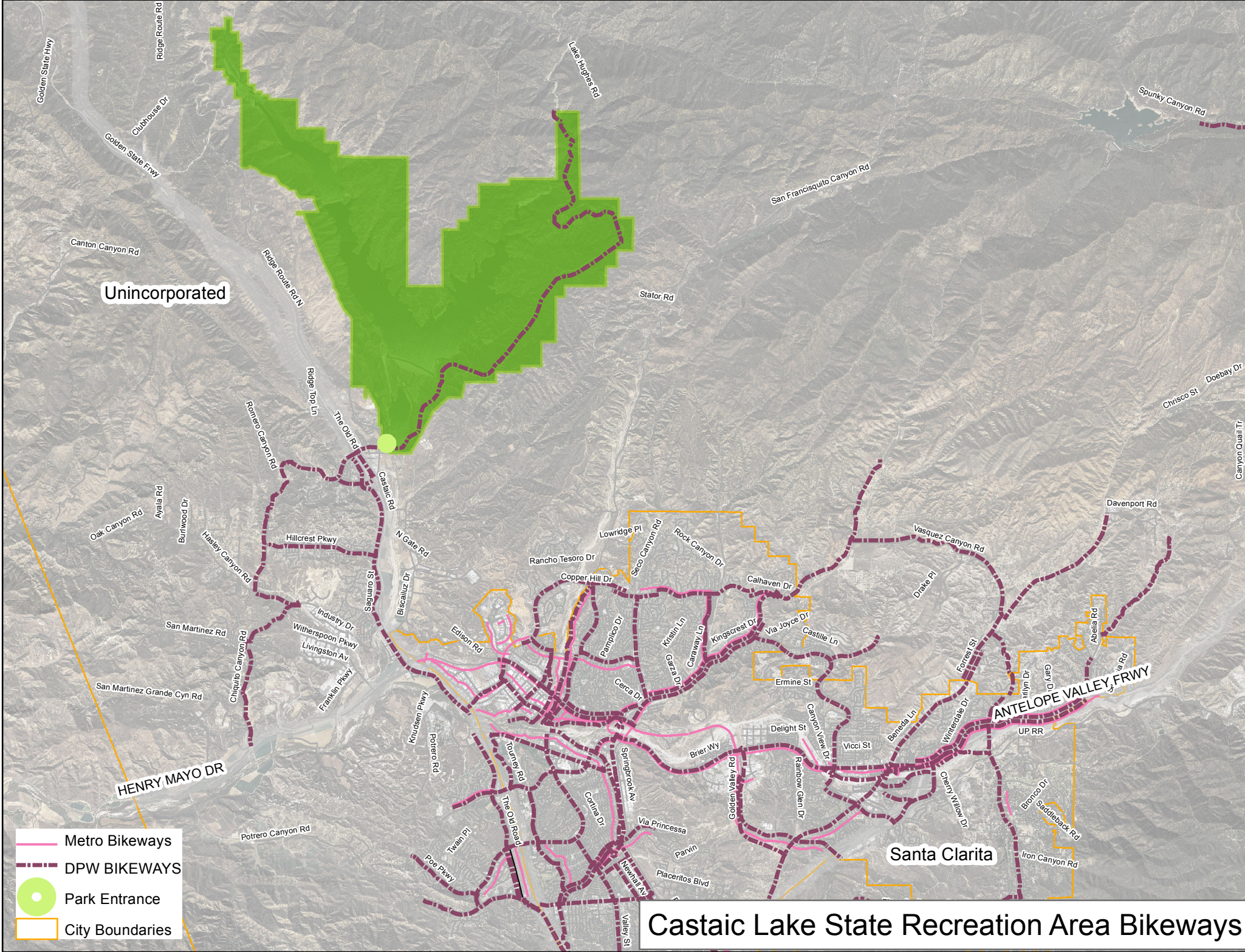
Bus Stops

Santa Clarita Transit

Unincorporated

Castaic Lake State Recreation Area Transit Map





Unincorporated

Santa Clarita

- Metro Bikeways
- DPW BIKEWAYS
- Park Entrance
- City Boundaries

# Castaic Lake State Recreation Area Bikeways