

2022 ANNUAL REPORT



LOS ANGELES COUNTY
REGIONAL PARK AND
OPEN SPACE DISTRICT

Message from the Director

In a year of recovery following a global pandemic, we have witnessed the value of parks and trails and the need for equitable access to open spaces and recreational programs for all. Thanks to the direction of the Board of Supervisors and the strong support of the voters of Los Angeles County, Measure A funding will continue to invest in creating equitable access to parks, supporting essential programming, and park development that serves to preserve and protect parks and open spaces.

The Regional Park and Open Space District (RPOSD) has had a very exciting and eventful year beginning with the awarding of over \$26 million in Measure A competitive grant programs in February. This marked the completion of the first-ever cycle of Measure A competitive grant programs for capital projects to promote, preserve, and protect parks and open spaces. Thirty grants were awarded to various cities, NGOs, and other eligible entities for park development across Los Angeles County. Of the \$26 million awarded, \$11 million went to projects in areas of high and very high park need.

RPOSD released an additional \$23 million in funding opportunities through its second cycle of competitive grant programs in June. These grant programs will award funding for the creation or expansion of recreational programs. The Youth and Veteran Job Training and Placement Program will consist of up to \$10.9 million in available funding for education, skills training, certification, and job placement programs in the field of parks and recreation for youth and veterans. The Recreation Access Program will consist of up to \$11.1 million in funding for programs that aim to increase accessibility to public lands, park facilities, including education, interpretive services, safety information, transportation, and other activities. RPOSD collaborated with Metro for the Recreation Access grant program. Metro will provide an additional \$1 million to fund transit to parks programs aimed at increasing accessibility for County residents to quality park facilities, especially for those residents in high and very high park need areas.

As we continue to address park inequities across Los Angeles County there is still important work that lies ahead. This includes the expansion of the Technical Assistance Program (TAP) that will directly impact high and very high park need study areas through a direct allocation that is anticipated to result in new parks to those areas. RPOSD is celebrating its thirtieth year in existence this November. RPOSD was created through the passage of Proposition A by the voters of Los Angeles County on November 3, 1992. Over the past thirty years, RPOSD has awarded more than \$1.5 billion in grants to cities, County departments, state and local agencies and community-based organizations for projects to improve and rehabilitate our parks, recreational facilities, trails, and open space lands throughout Los Angeles County.

As we all know, the implementation of Measure A is not an individual effort. We continue to extend our gratitude to the people of Los Angeles County, the Board of Supervisors, the Citizens Oversight Advisory Board members, and our staff for another year of meaningful progress together in our commitment to administering Measure A with transparency and integrity.

Sincerely,



Norma E. García-González, Director
Los Angeles Regional Park and Open Space District



Introduction

The Los Angeles County Regional Park and Open Space District (RPOSD) was created with the passage of Proposition A in 1992 and continues its mission “to enrich and empower the communities of Los Angeles County through innovative grantmaking for parks and open space” with the approval of Measure A in 2016 by the voters of Los Angeles County. RPOSD is a special district whose boundaries are the same as the County of Los Angeles and the County’s Board of Supervisors serve as its Board of Directors. RPOSD’s mandate is to collect taxes within the boundaries (as approved by nearly 75% of voters) and to grant out funds to the County’s 88 cities, local park agencies and non-profits for improving, refurbishing and creating new park projects.



Content

A Year In Review.....	4
Measure A Revenue Collected for 2022.....	8
A Look Ahead.....	10

Appendices

- I : Measure A Allocation July 2021 - June 2022
- II : Measure A Park Investments July 2021 - June 2022
- III : Proposition A 2022 Plan of Revenue Expenditure



The District’s Board of Directors

Hilda L. Solis
Supervisory District 1

Holly J. Mitchell
Supervisory District 2

Sheila Kuehl
Supervisory District 3

Janice Hahn
Supervisory District 4

Kathryn Barger
Supervisory District 5

Fiscal Year 2021-2022 In Review

Fiscal Year 2021-2022 has been an eventful year for the Regional Park and Open Space District (RPOSD). In RPOSD's continued endeavors to advance its mission and achieve park equity in Los Angeles County, the following are notable highlights of the fiscal year:

California Elections

RPOSD staff played an essential role in the democratic process by serving as Election Workers in the September 2021 California Gubernatorial Recall and the June 2022 California Primary Elections. Providing excellent customer service, RPOSD staff supported and ensured smooth and successful elections at vote centers across Los Angeles County.

Technical Assistance Program (TAP) Qualified Consultants

Since the release of the TAP solicitation for professional consultants, RPOSD has qualified 21 consulting firms as TAP Consultants. From park conceptualization to project feasibility to construction administration, there are a variety of consulting services available to assist eligible entities in accessing Measure A funds and support the realization of park projects. This fiscal year, three eligible entities received professional grant writing services through TAP to help apply for the 2021 Measure A Competitive Grant Programs, which successfully resulted in the awarding of a total of \$2 million in competitive grant funds.

Citizens Oversight Advisory Board

New Advisory Board Members were appointed to replace Advisory Board Member Muñoz and Baucum, who resigned at the April 2021 and July 2021 meetings, respectively. Supervisor Mitchell of the Second District appointed Reginald Johnson and Supervisor Hahn of the Fourth District appointed Melissa Balocca on September 28, 2021. They attended their first Advisory Board meeting on October 13, 2021. The Advisory Board adopted bylaws at the following meeting in January 2022 and elected Advisory Board Member Padilla as the new Chairperson and Advisory Board Member Johnson as the new Vice Chairperson.



Assistant District Administrator

In January 2022, Marybeth Vergara joined RPOSD as Assistant District Administrator. With over 14 years of experience in grant management for park projects, tracking legislation, and policy implementation at the Rivers and Mountains Conservancy, she serves as second-in-command to District Administrator Christina Angeles in overseeing the distribution of grant revenue, managing the implementation of grant programs, and directing the workflow and strategic process of the three RPOSD sections.



Park Investment Map

The RPOSD Viewer was overhauled, and significant improvements were made to the functionality of the web-based map. The map was renamed the Park Investment Map to better communicate Los Angeles County taxpayers' and voters' investment in the County's parks and open spaces. With new and updated functions, the online map is now a more user-friendly and interactive geographical display of Measure A and Proposition A projects, parks and open spaces, park-need levels of Measure A Study Areas, and more.

Grants Administration Manual (GAM)

On January 13, 2022, RPOSD released the latest edition of the GAM, which comprised of revisions to the RPOSD Branding Policy, Technical Assistance Program, Maintenance and Servicing funds, Competitive Grants, Fund Advancement, and Grant Closing/Post-Closing Obligations. The updated policies apply to active and future grant programs.



Evaluator Recruitment and Training

Consistent with the Grants Administration Manual (GAM), the District is required to collaborate with subject matter experts to evaluate and award competitive grants funded with Measure A funds. This includes the recruitment and training of independent evaluators for each competitive grant program. In January, the District successfully recruited, vetted and trained 9 evaluators for the 3 competitive grant programs awarded in February 2022 for Category 3: Natural Lands, Local Beaches, Water Conservation & Protection, Category 4: Regional Recreation, Multi-use Trails and Accessibility, and Acquisition Only.

Awarding of 2021 Competitive Grants

The awarding of the first-ever Measure A Competitive Grant Programs was a historic moment for RPOSD. To celebrate this milestone, RPOSD held an award press event on February 23, 2022, and announced over \$26 million were awarded for 30 park development projects. Forty-two percent (\$11 million) of the total amount awarded went to park projects in high and very-high park-need study areas.



MAINTENANCE & SERVICING

Formula-based allocations for maintenance and servicing of grant-funded projects.

CATEGORY 5

Youth and Veteran Job Training and Placement Opportunities Program

Grants, to be awarded through a competitive process

CATEGORY 4

Regional Recreational Facilities, Multi-use Trails, and Accessibility Program

Grants, to be awarded through a competitive process.

Technical Assistance
\$3.5
Other
\$4.2

PROGRAM INNOVATION & OVERSIGHT

Needs Assessment updates, innovative technologies, and operations of RPOSD.

CATEGORY 1

Community-Based Park Investment Program

Formula-based allocations of funds for grants to each Study Area.*

CATEGORY 2

Safe, Clean Neighborhood Parks, Healthy Communities, and Urban Greening Program

Formula-based allocations of funds for grants to High and Very-High Need Study Areas.

CATEGORY 3

Natural Lands, Open Spaces and Local Beaches, Water Conservation, and Watersheds Protection Program

Grants, to be awarded through a competitive process.

Education and Skills Training
Certification and Job Placement
\$3.3
\$0.8

General
\$3.8
High & Very High Need Study Areas
\$1.7
Planning & Design
\$1.4

County Dept. of Parks & Recreation (Annual Allocation)
\$6.9
Recreation Access
\$3.5
Cultural Facilities
\$2.1
\$1.4

General
\$4.8
High & Very High Need Study Areas
\$2.1
Planning & Design
\$1.4

County Dept. of Beaches & Harbors (Annual Allocation)
\$8.3
Recreation Access
\$3.5
\$2.1

Revenue Collected by Funding Categories*

(IN MILLIONS OF DOLLARS)

MEASURE A REVENUE COLLECTED \$109M for 2022

Numbers on this chart reflect the revenue collected from Measure A direct assessments for the fiscal year. For details on allocation and expenditure, refer to Appendix I.

*Note: The District's Board of Directors may allocate up to 2% of total funds for eligible County Priority projects each year (up to \$2.2M total for 2022).

LOS ANGELES COUNTY REGIONAL PARK AND OPEN SPACE DISTRICT

HIGHLIGHTS

JULY 1, 2021 TO JUNE 30, 2022



1ST CYCLE OF COMPETITIVE
GRANT PROGRAMS



\$26 MILLION
AWARDED



59 GRANTS AWARDED
INCLUDING PARK DEVELOPMENT,
SUSTAINABLE ELEMENTS, AND TRAILS



PROP A NEW PARKS
& OPEN
SPACES **\$4.2M**



PARK IMPROVEMENTS
\$7.1M
19 GRANTS AWARDED

MEASURE A
ANNUAL ALLOCATIONS



COMMUNITY-BASED PARK
INVESTMENT PROGRAM

\$35.6M



NEIGHBORHOOD PARKS,
HEALTHY COMMUNITIES, &
URBAN GREENING PROGRAM

\$13.2M



COUNTY PRIORITY PROJECTS

\$2.1M

2ND CYCLE OF
COMPETITIVE GRANT
PROGRAMS LAUNCHED
JUNE 2022



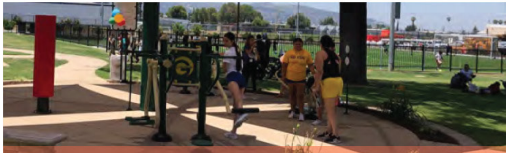
\$10.9M AVAILABLE
YOUTH & VETERAN JOB
TRAINING & PLACEMENT

\$11.1M AVAILABLE
RECREATION ACCESS

MEASURE A
TECHNICAL ASSISTANCE
PROGRAM

21 PROFESSIONAL
CONSULTANTS
VETTED & QUALIFIED

ALLOCATION OF OVER
\$9M TO **30**
CITIES AND
UNINCORPORATED
AREAS OF
LOS ANGELES COUNTY

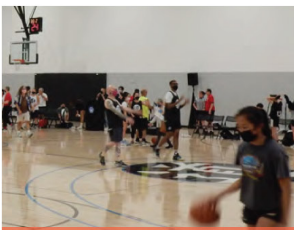


ALLOCATED
\$15.3M MEASURE A
MAINTENANCE
& SERVICING PROGRAM

PARK INVESTMENT MAP VIEWER

DISPLAYS **89 MEASURE A**
1,109 PROP A PROJECTS

CELEBRATING OUR 30th YEAR WITH
\$1.5B IN PROP A &
MEASURE A
INVESTED IN PARKS COUNTYWIDE



NEW PARK AMENITIES
\$4.2M
9 GRANTS



Created by the County of Los Angeles, Department of Parks & Recreation



A Look Ahead...

As RPOSD celebrates its 30th year, we look ahead to what's on the horizon for Fiscal Year 2022-2023:

- ❖ Announcement of RPOSD competitive grant awards to Recreation Access (in partnership with Metro) and Youth & Veteran Job Training and Placement
- ❖ Press event announcing the release of more than \$9 million in TAP Allocations
- ❖ RPOSD continues the expansion of TAP with the addition of a TAP Grants Officer and a TAP Coordinator
- ❖ Additional updates to the Grants Administration Manual
- ❖ Growth of TAP Qualified Vendors to provide curated specialized services to High and Very High need study areas
- ❖ Return to in person meetings



Share A Park Story

Do you remember running around the jungle gym at the neighborhood park?

Have you or your pup made new pals at the dog park?

Do you enjoy riding your bike in the sunshine through Los Angeles County's beautiful trails?

We would love to hear your park story.



Every Park Has Its Stories... ...Tell Us Yours!



Submit a story along with your photo(s) and it may be featured on our newsletter or shared on the website!

<https://rposd.lacounty.gov/our-stories/>



Stay Connected!

Be in the know with all the latest information from the District by following us on social media:



/rposd



@rposd



@rposd

and subscribing to RPOSDevelopments, our quarterly newsletter!

<https://rposd.lacounty.gov/newsletter/>

Have an idea for or a concern about your neighborhood park?

RPOSD is purely a grantmaking organization, generating revenue from local property tax assessments and administering grant and maintenance funding. All of the projects we fund are owned and managed by public agencies or non-profit organizations. We recommend contacting the agency who owns and operates that facility. You can contact us directly to inquire about the best contact for your cause.



626.588.5060 • info@RPOSD.lacounty.gov • RPOSD.LACounty.gov