

MEASURE A IMPLEMENTATION STEERING COMMITTEE MEETING #1



LOS ANGELES COUNTY
REGIONAL PARK AND
OPEN SPACE DISTRICT

APRIL 27, 2017



WELCOME

Jane Beesley

*Administrator, Los Angeles County
Regional Park and Open Space District*



TODAY'S AGENDA

1. Introductions
2. Measure A Overview
3. Measure A Implementation
4. Steering Committee Overview
5. Next Steps





INTRODUCTIONS

PlaceWorks

- David Early, AICP, LEED ND, Senior Advisor
 - Lead Steering Committee Facilitator

- C.C. LaGrange, ASLA, Associate
 - Project Manager

- Jessica Wuyek, Project Planner
 - Assistant Project Manager

Regional Park and Open Space District

- Warren Ontiveros
 - Manager of the Administration Section
wontiveros@parks.lacounty.gov

- Agie Jordan III
 - Manager of the Grants Section
ajordan@parks.lacounty.gov

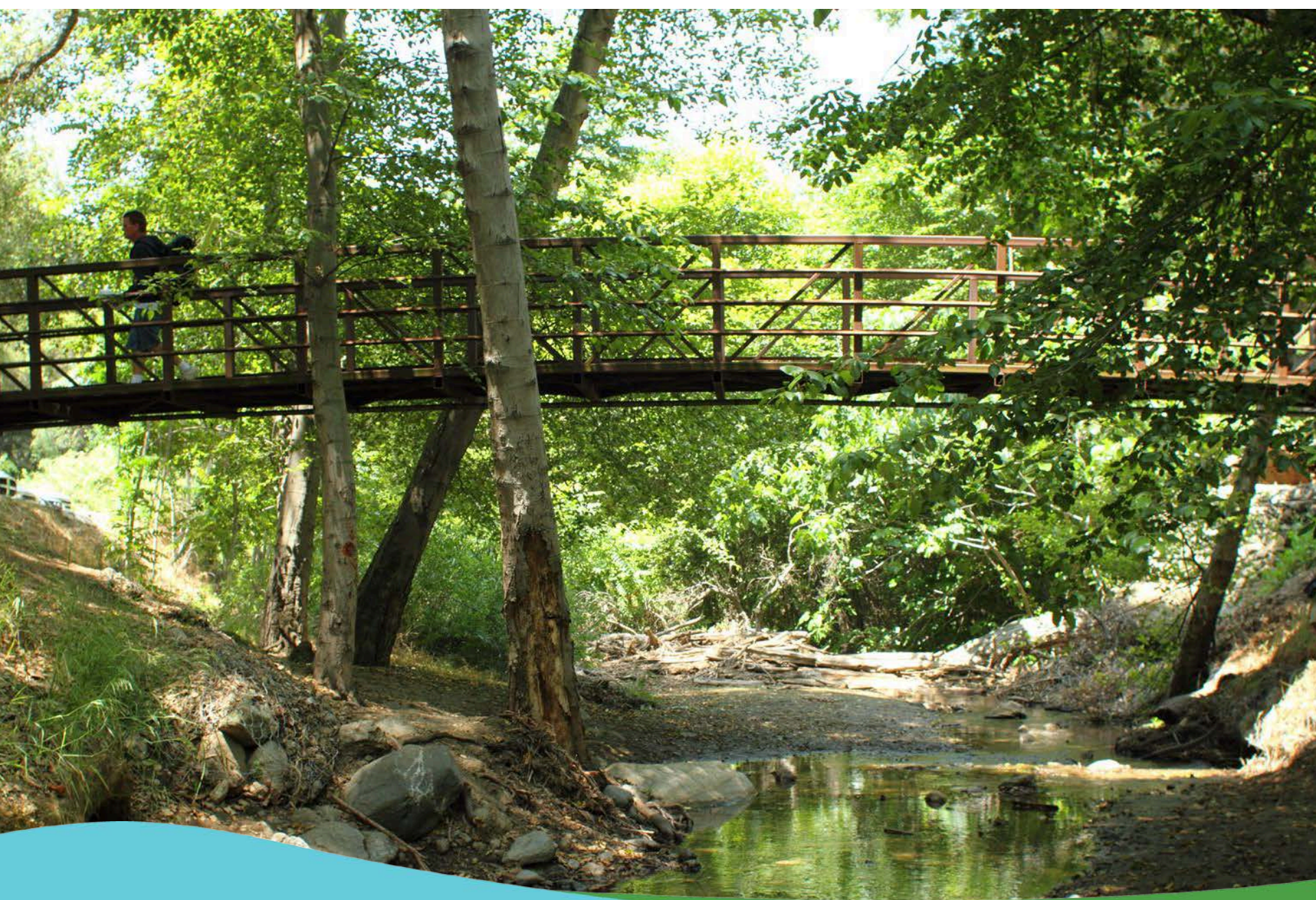
- Arnaldo De La Paz
 - Manager of the Fiscal Section
adelapaz@parks.lacounty.gov

Main office line: 213-738-2981

Steering Committee Composition

- Supervisorial Appointments
 - Community-Based Organizations
 - Community Members-at-Large
 - Supervisorial District Staff
- County Departments:
 - Beaches and Harbors
 - Consumer and Business Affairs
 - Chief Executive Office
 - Military and Veterans Affairs
 - Parks and Recreation
 - Public Health
 - Regional Park and Open Space District
- Councils of Government (COGs)
- Partnering Agencies:
 - First Five LA
 - Trust for Public Land
 - Prevention Institute
 - California Conservation Corps





MEASURE A OVERVIEW

MEASURE A OVERVIEW

- What is the purpose of Measure A?
- How was Measure A developed?
- Has there been support for Measure A?
- How is Measure A funded?
- What is the timeline for Measure A?



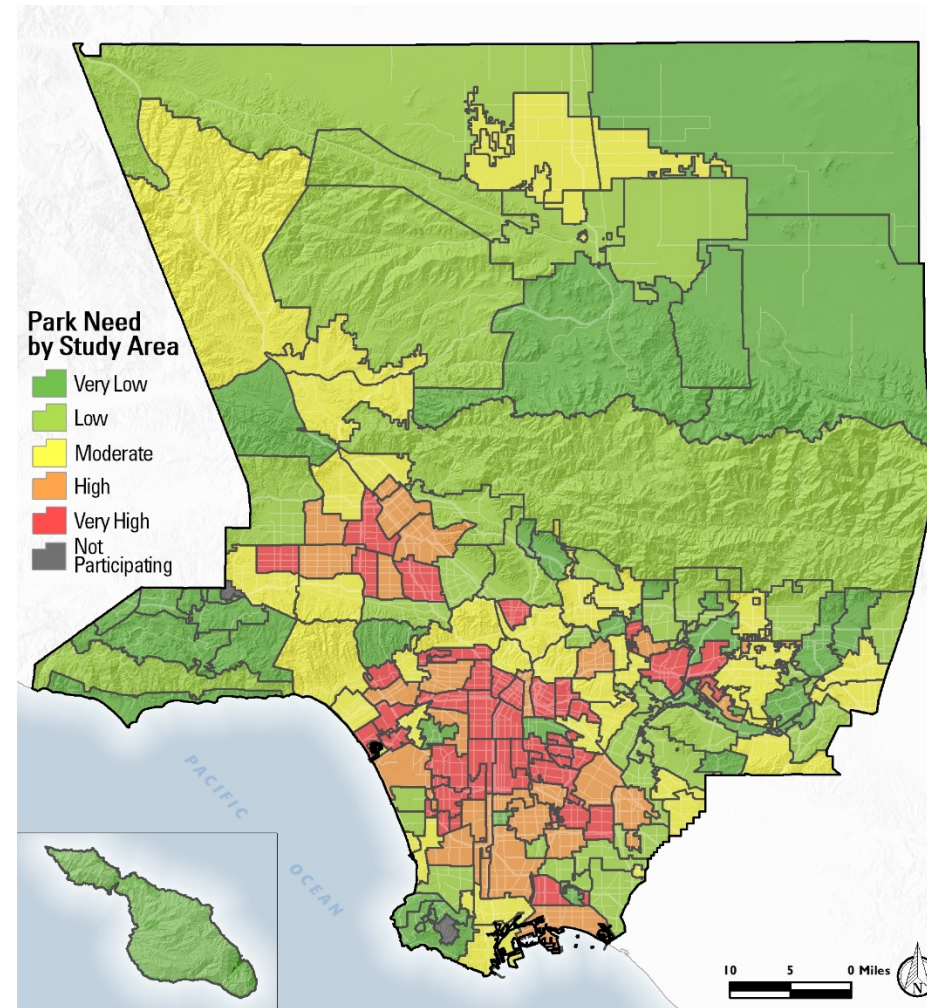
Purpose

- Provides funds to improve the quality of life throughout Los Angeles County by preserving and protecting parks, safe places to play, community recreation facilities, beaches, rivers, open spaces and water conservation.
- Provides dedicated local funding for:
 - Parks
 - Recreation
 - Beaches
 - Open Space
 - Trails
 - Cultural Facilities
 - Veteran and Youth Programs
- Designed to address park equity issues in the County



Development

- Crafted to support the conclusions of the Park Needs Assessment
- Input from cities, non-profit organizations, other agencies, residents
- Approved by 75% of voters in November 2016



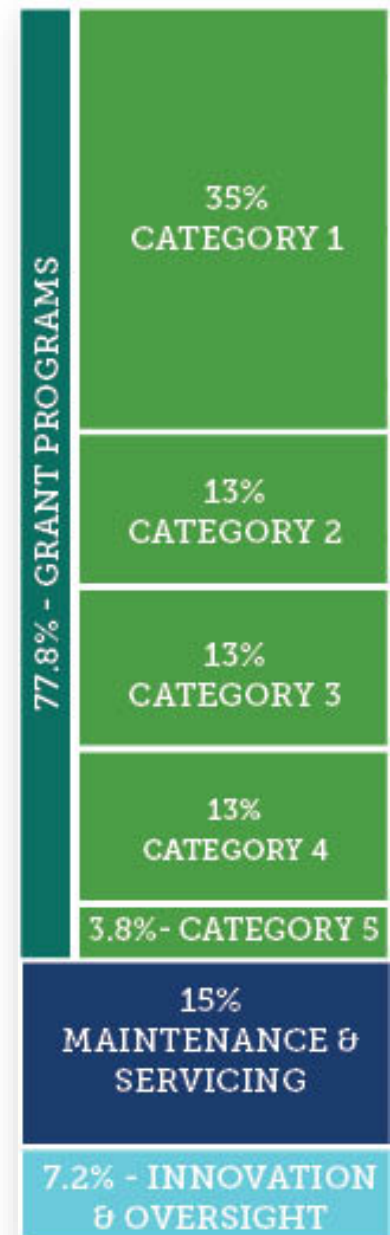
Revenue

- Annual parcel tax of 1.5 cents per square foot
- Estimated annual revenue is \$94.5 million
- No expiration



Expenditure

- Up to 77.8% of funds will go to grant programs
 - Includes both non-competitive grant allocations and competitive grants
- Up to 15% of funds will go to maintenance and servicing
- Up to 7.2% will go to innovation and oversight

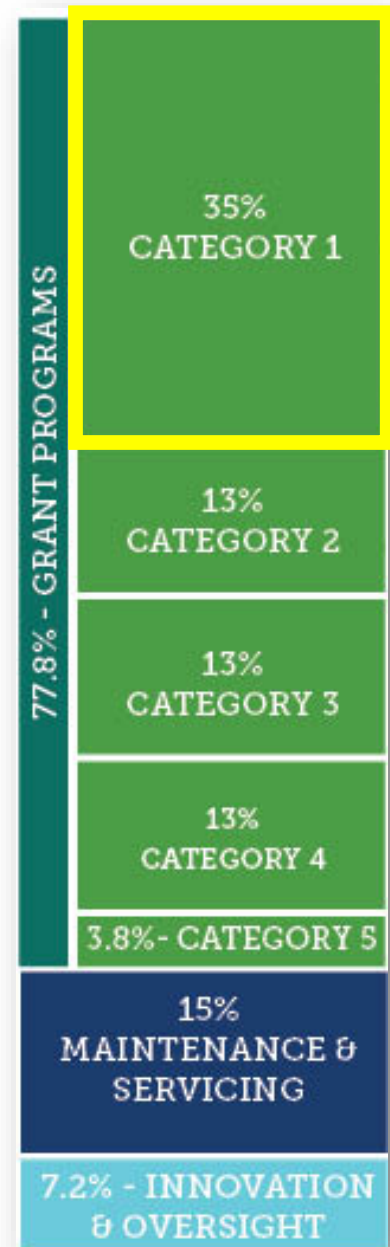


Grant Programs – 77.8% of Funds

- **Category 1 - Community Based Park Investment Program**
 - Annual non-competitive grant allocation to every Study Area
 - Calculated using Per Capita and Structural Improvements Formula:

(Per Capita + Per Capita + Structural Improvements)

3

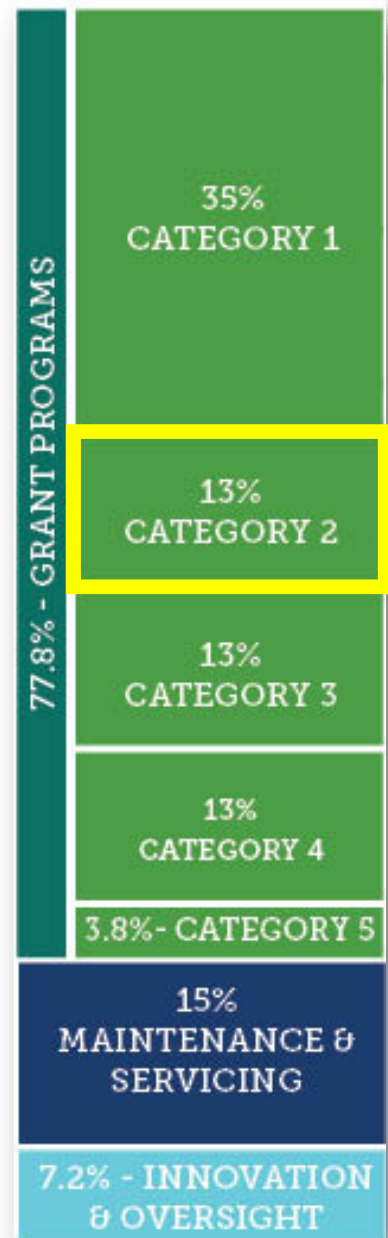


Grant Programs – 77.8% of Funds

- **Category 2** – *Safe Parks, Healthy Communities, Urban Greening Program*
 - Annual non-competitive grant allocation Study Areas with High or Very High need
 - Calculated based on Per Capita and Structural Improvements Formula:

(Per Capita + Per Capita + Structural Improvements)

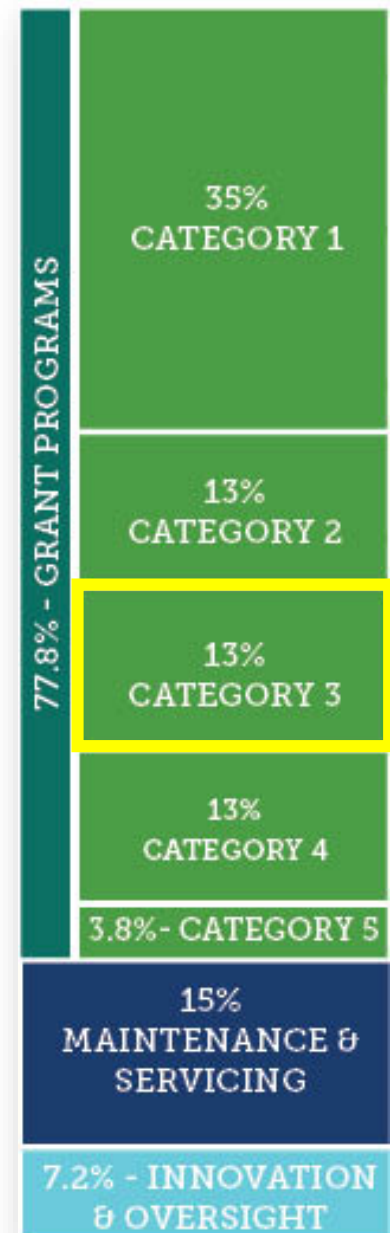
3



Grant Programs – 77.8% of Funds

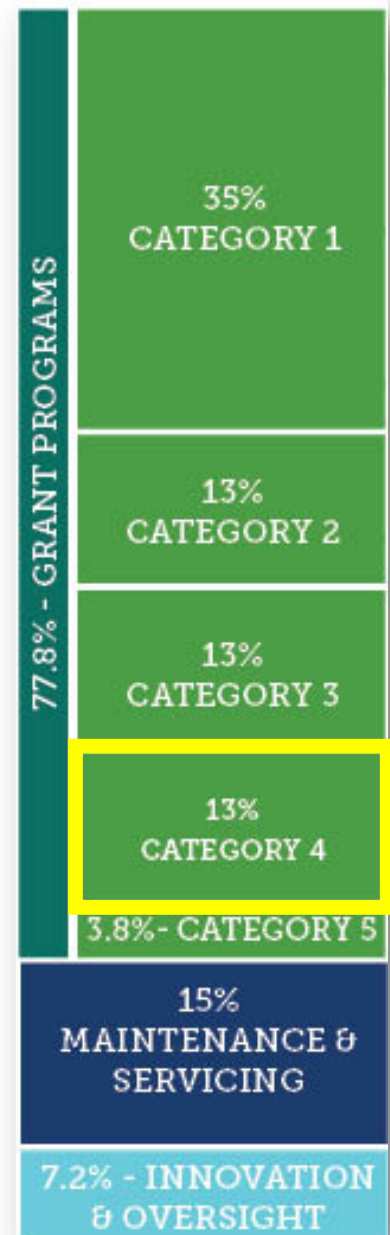
- **Category 3** – *Protecting Open Space, Beaches, Watersheds Program*
 - Competitive grants, with the following exceptions:
 - Up to 25%* for non-competitive grant allocation to LA County Department of Beaches & Harbors
 - Up to 15%* for competitive grants to develop and implement Recreation Access programs

**to be determined by Board of Supervisors annually*



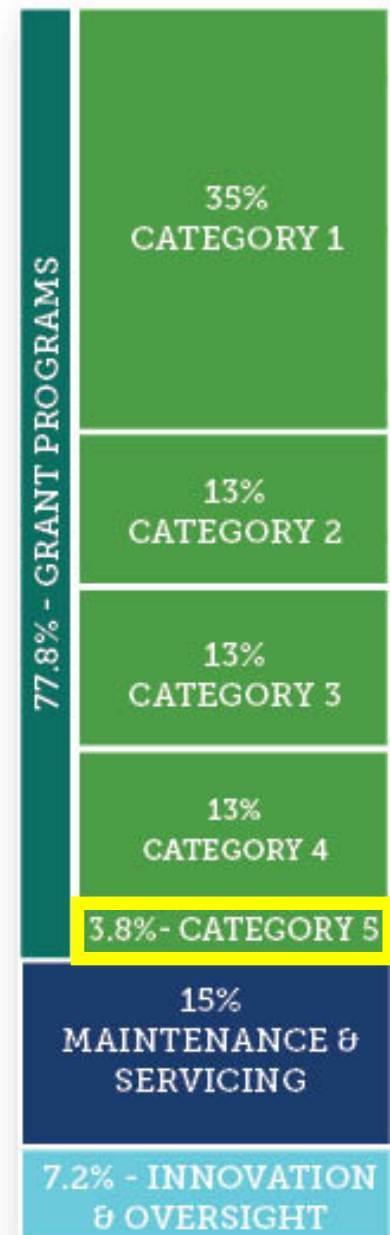
Grant Programs – 77.8% of Funds

- **Category 4** – *Regional Recreational Facilities, Trail and Accessibility Program*
 - Competitive grants, with the following exceptions:
 - Up to 25% for non-competitive grant allocation to LA County Department of Parks and Recreation
 - Up to 15% for competitive grants to develop and implement Recreation Access programs
 - Up to 10% for non-competitive grant allocations to County cultural facilities



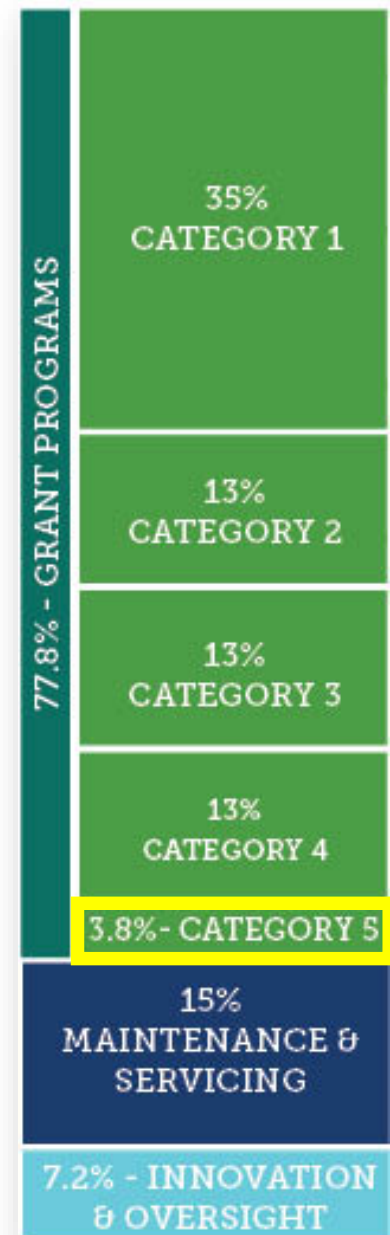
Grant Programs – 77.8% of Funds

- **Category 5** – *Youth and Veterans Job Training & Placement Opportunities Program*
 - Competitive grants
 - No less than 80% of funds to organizations providing education, skills training, career pathway development to youth aged 18-25, or veterans, to implement park projects



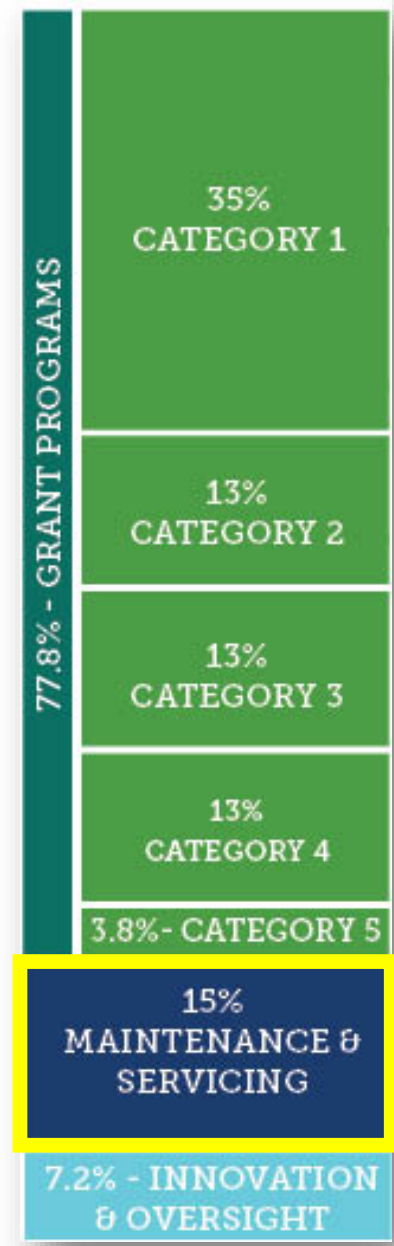
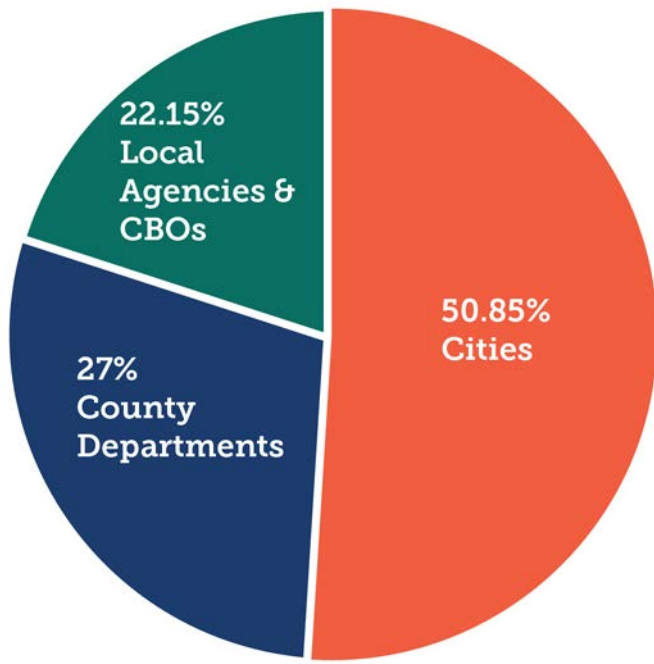
Grant Programs – 77.8% of Funds

- **Category 5** – *Youth and Veterans Job Training & Placement Opportunities Program*
 - Remaining funds to organizations providing certifications and placement services or apprenticeship opportunities to young adults aged 18-25, or veterans, for jobs and careers in the parks and recreation field
 - Organizations serving Study Areas with High or Very High park need will be prioritized



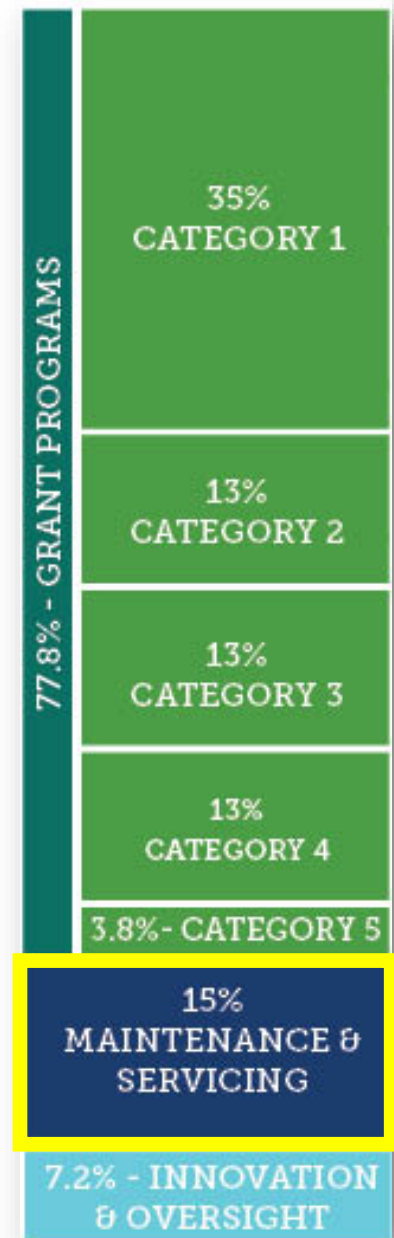
Maintenance & Servicing – 15% of Funds

- For all projects funding by RPOSD
- Allocated based on Per Capita and Structural Improvements Formula as follows:



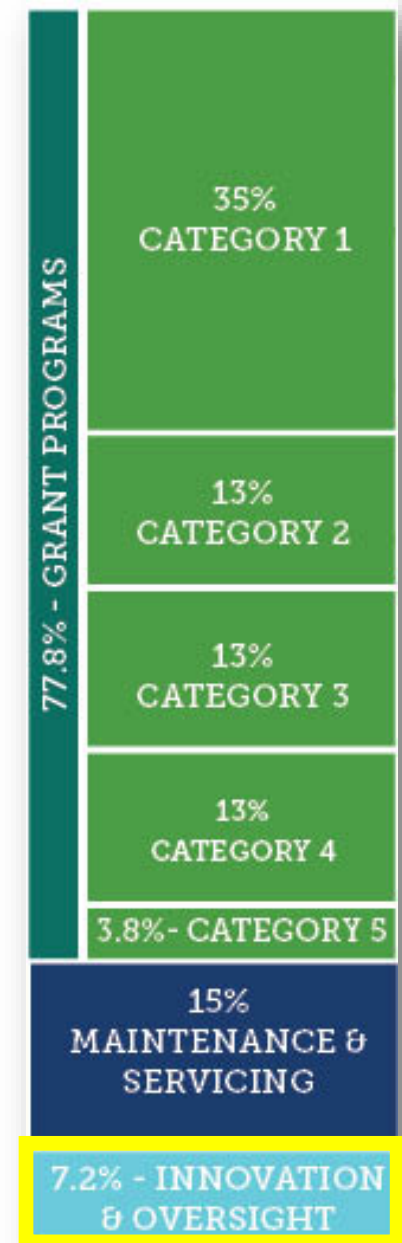
Maintenance & Servicing – 15% of Funds

- 50.85% to cities
- 13.5% to LA County Dept. Parks & Recreation
- 10.5% to LA County Dept. Beaches & Harbors
- 3.0% to LA County Dept. Public Works
- 8.0% to Mountains Recreation and Conservation Authority
- 5.15% to Watershed Conservation Authority
- 2.0% to Puente Hills Habitat Preservation Authority
- 1.0% to Baldwin Hills Regional Conservation Authority
- 1.0% to Santa Clarita Watershed Recreation and Conservation Authority
- 0.5% to Los Cerritos Wetlands Authority
- 4.5% unallocated, for eligible nonprofit organizations

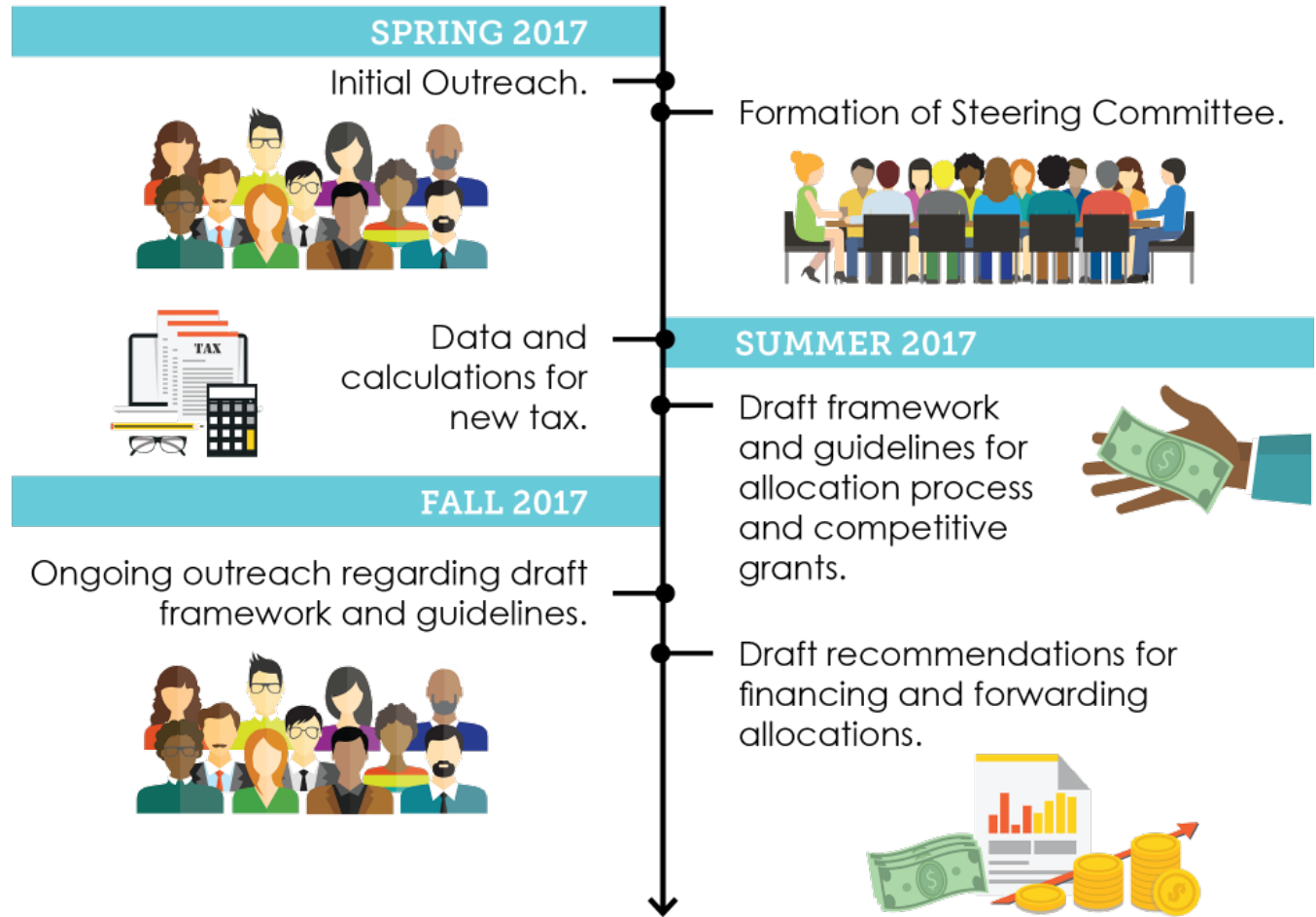


Innovation & Oversight – 7.2% of Funds

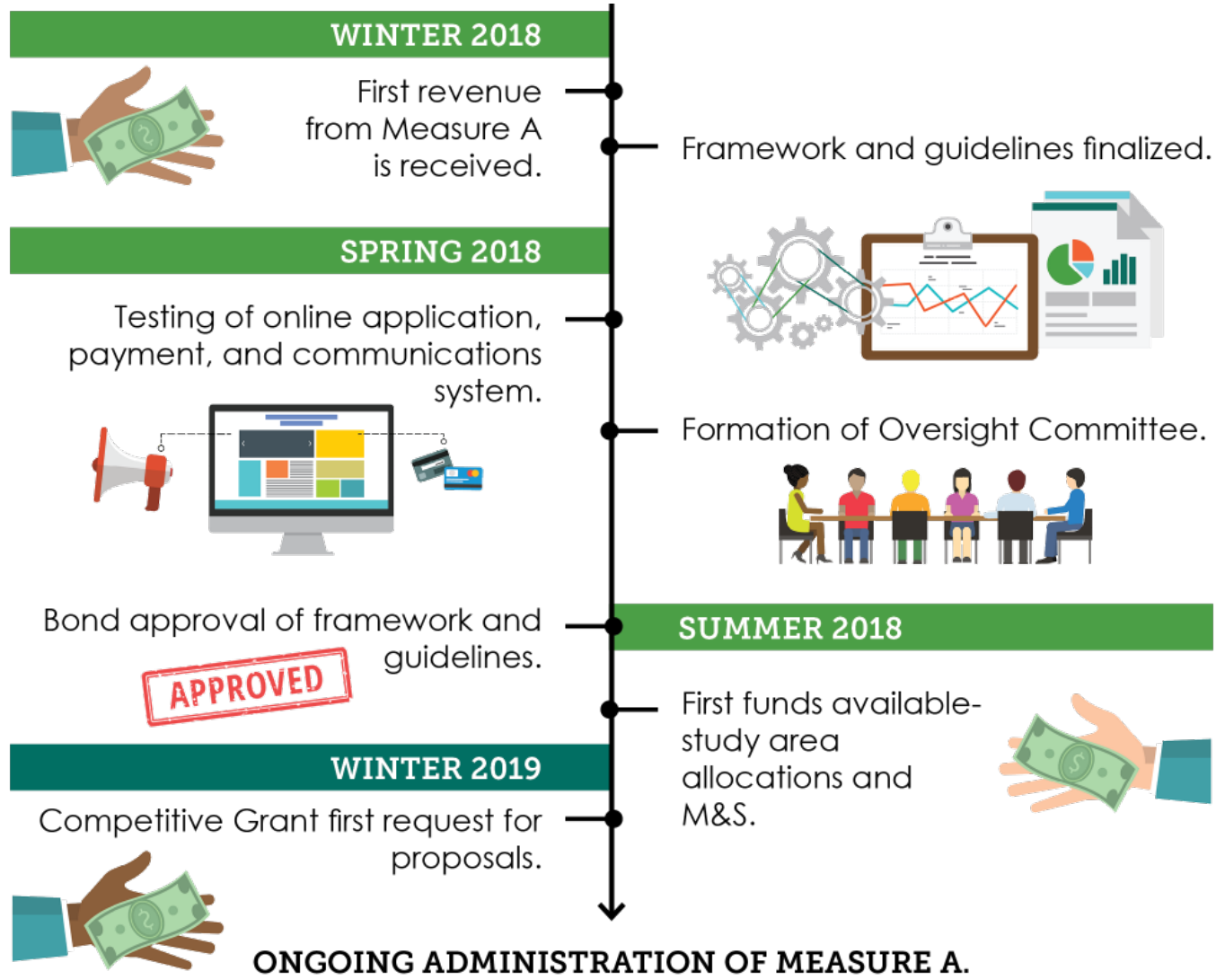
- Designated for:
 - Strategic planning
 - Updates to 2016 Countywide Parks Needs Assessment
 - District operations, management, technical assistance, outreach, and oversight to administer programs



Timeline



Timeline





MEASURE A IMPLEMENTATION

MEASURE A IMPLEMENTATION

- Expenditure Plan
- Forwarding and Bonding
- Technology
- Implementation Policies
- Tracking and Updates
- Outreach



Expenditure Plan

- Grant Programs
- Maintenance & Servicing
- Innovation & Oversight



Expenditure Plan: *Grant Programs*

- Non-competitive grant allocations:
 - Categories 1 and 2 and parts of Categories 3 and 4
 - Eligibility
 - Application
 - Assignment of funds from low-population Study Areas to other agencies



Expenditure Plan: *Grant Programs*

- **Competitive grants:**
 - Most of Categories 3 & 4, all of Category 5
 - Program Formulation
 - Eligibility, number of grant programs, timing for grant cycles, selection criteria
 - Program Details
 - Application requirements, evaluation scoring system, guidelines
 - Grant Calendar and Outreach Materials



Expenditure Plan: *Maintenance & Servicing*

- Similar to current system
- Budget and payment requests
- Process for non-profit organizations to achieve eligibility



Expenditure Plan: *Innovation & Oversight*

- Program Innovation and Oversight Fund Policy
 - Formal policy outlining how the funds should be rolled out
 - Guidelines for when the funds should be rolled out



Forwarding and Bonding

- **Strategy and Policy Memo**
 - Recommendations
 - Timeframes
 - Cost implications
- **Bonding Consultation**
- **Strategic Expenditure Plan**
 - Projected spending over a 10-year period
 - Aligned with US Census updates



Technology

- **Develop paperless processes to collect and manage:**
 - **Revenue:** Calculations and reports regarding revenue collection
 - **Grant Programs:** Eligibility, applications, contracts, amendments, and payment requests
 - **Maintenance & Servicing:** Eligibility, allocations, and payment requests
 - **Projects:** Location and status of funded projects
 - Internal workflow tracking



Additional Policies

- **Board Set-Aside Policy**
 - Guidelines for the appropriation of a 2% set-aside for Board initiated projects
- **Consumer Price Index (CPI) Update Policy**
 - How and when these increases will occur
 - Emphasis on when the first increase should happen



Tracking and Updates

- **Project Tracking**
 - Technology and software
 - Self-reporting process
- **Allocation Equity Methodology**
 - Objectives and methodologies to track funding to High and Very High need Study Areas
- **Needs Assessment Maintenance**
 - Protocol for updating the existing database



Outreach

- RPOSD website
 - Regular updates
- Agencies
 - Three rounds of meetings
 - Raise awareness of upcoming funding opportunities
 - Education about resources available to agencies
 - Input on development of grant guidelines



Outreach

- **Community Meetings**
 - 30 meetings to be held across county
 - Explain how Measure A is being implemented
 - Gather input about implementation
 - Community based organizations will assist with outreach





STEERING COMMITTEE OVERVIEW

STEERING COMMITTEE OVERVIEW

- Purpose and Role
- Conduct & Expectations
- Decision-Making
- Brown Act
- Meeting Schedule

Purpose and Role: Three Main Functions

1. Provide feedback and direction, with the goal of creating processes, systems, and communication strategies that support the efficient, equitable, and sustainable distribution of Measure A funds
2. Make recommendations at key project milestones
3. Communicate information about the implementation of Measure A to County residents and organizations to raise awareness of the funding opportunities available through RPOSD



Purpose and Role: Major Tasks

- Provide guidance on Grant Program formulation and details
- Review Maintenance & Servicing application and requirements
- Provide guidance on Innovation & Oversight policy
- Review Bonding and Forwarding strategy and policy
- Review Project Tracking approach
- Provide guidance on Allocation Equity Methodology
- Provide guidance on Needs Assessment maintenance approach
- Support Community Engagement efforts

Conduct

- Constructive dialogue
- Mutual respect
- Commitment to collaboration

Expectations

- Participation
- Communication
- Information Sharing



Decision-Making

- Problem solving approach
- Consensus-oriented decision making
- Majority vote if needed
- Absence when decisions are made:
 - Alternates allowed to attend twice
 - Only those present may vote



Ralph M. Brown Act

- Steering Committee meetings are subject to the Brown Act
- Public comment will be limited to 15 minutes total at the end of each Steering Committee meeting
- The Brown Act prohibits discussion of committee business by a majority outside of committee meetings
- No serial meetings
- Email communication
- Conflicts of interest



Meeting Schedule

- Last Thursday of each month
 - Not always 4th Thursday
- Some months may be skipped
- Exact calendar to be published soon
- Next meeting Thursday, May 25

Committee Discussion of Key Points and Issues

- Grant Program formulation and details
- Maintenance & Servicing
- Innovation & Oversight
- Bonding and Forwarding
- Additional Policies
- Tracking and Updates
- Community Engagement
- Other

CONTACTS



LOS ANGELES COUNTY REGIONAL PARK AND OPEN SPACE DISTRICT

www.RPOSD.lacounty.gov

Jane I. Beesley

jbeesley@parks.lacounty.gov

(213) 738-2981