



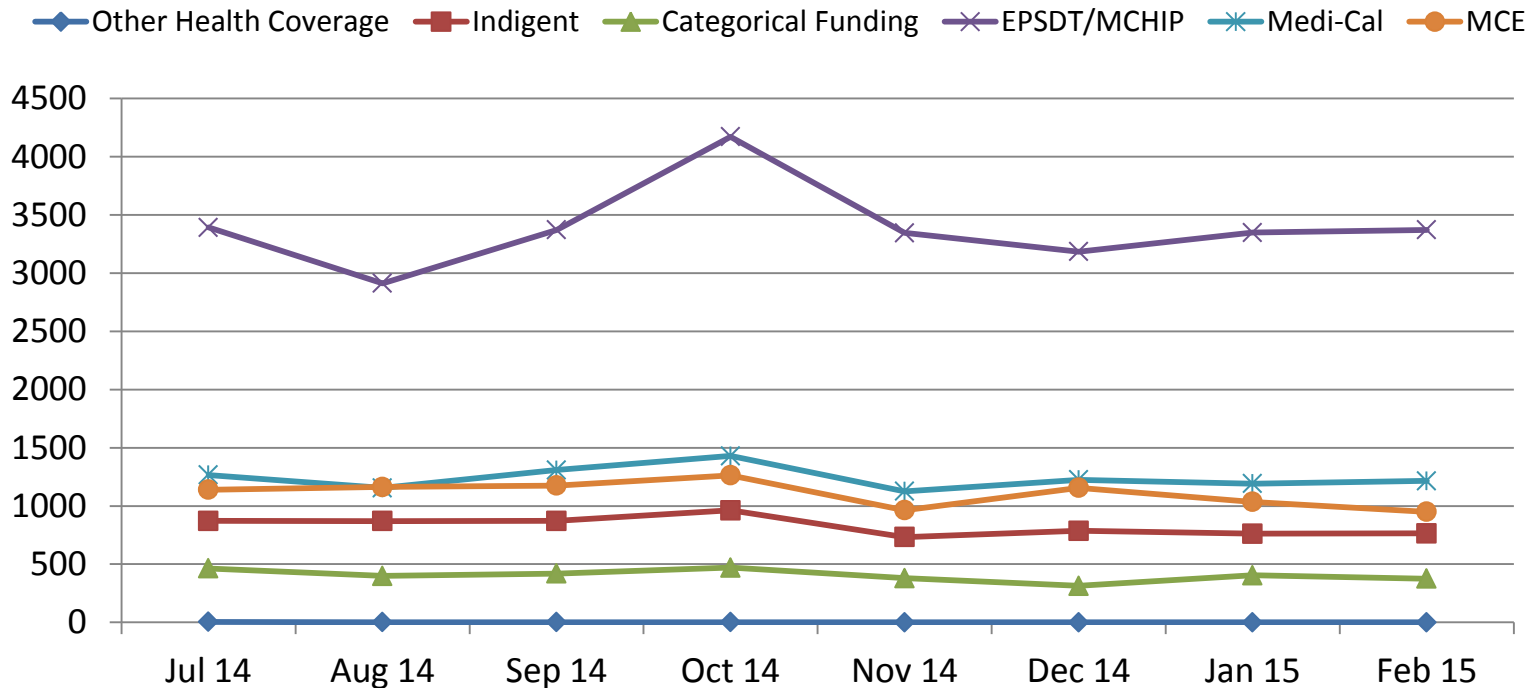
LAC
DMH
LOS ANGELES COUNTY
DEPARTMENT OF
MENTAL HEALTH

DMH and the Affordable Care Act (ACA)

Robin Kay, Ph.D., Chief Deputy Director
Los Angeles County Department of Mental Health
April 14, 2015

Service Capacity & Access

FY 14/15 New Clients by Month by Funding Type Outpatient Claims



“New clients” identified as no prior service in last 12 months

“Categorical Funding” includes CalWORKs, SAMHSA, etc.

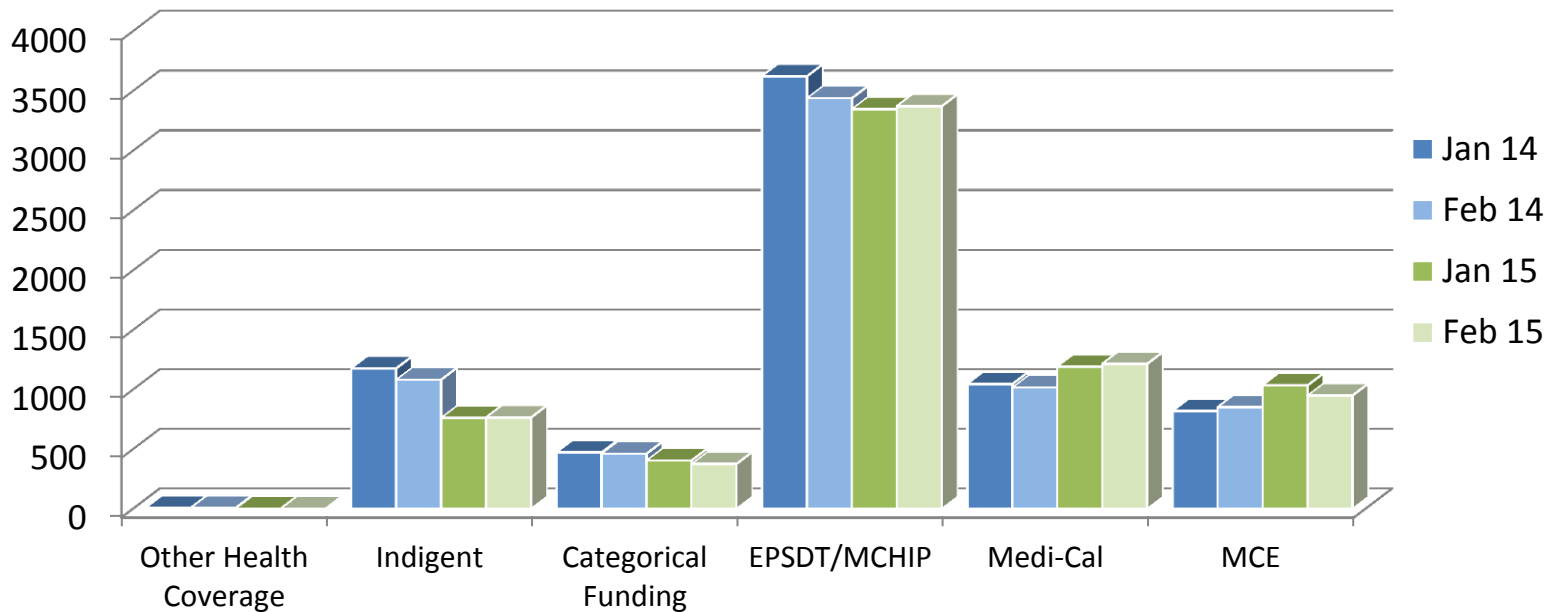
“Medi-Cal” includes all Medi-Cal, including Medi-Medi, except for MCE and EPSDT/MCHIP

“EPSDT/MCHIP” includes EPSDT, MCHIP, MCHIP EPSDT

Service Capacity & Access

New Clients by Month by Funding Type Outpatient Claims

January - February 2014 compared to January - February 2015



“New clients” identified as no prior service in last 12 months

“Categorical Funding” includes CalWORKs, SAMHSA, etc.

“Medi-Cal” includes all Medi-Cal, including Medi-Medi, except for MCE and EPSDT/MCHIP

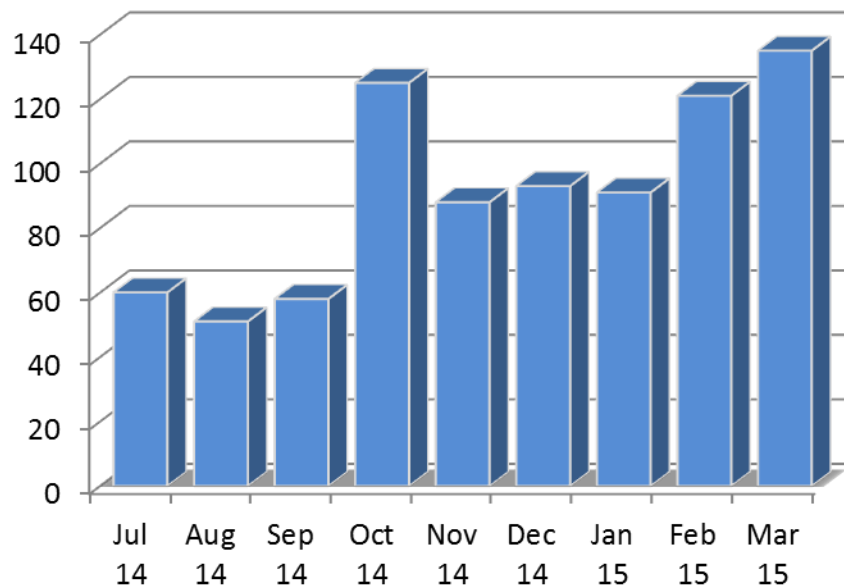
“EPSDT/MCHIP” includes EPSDT, MCHIP, MCHIP EPSDT

Service Capacity & Access

Referrals from Medi-Cal Managed Care Plans for Urgent Appointments

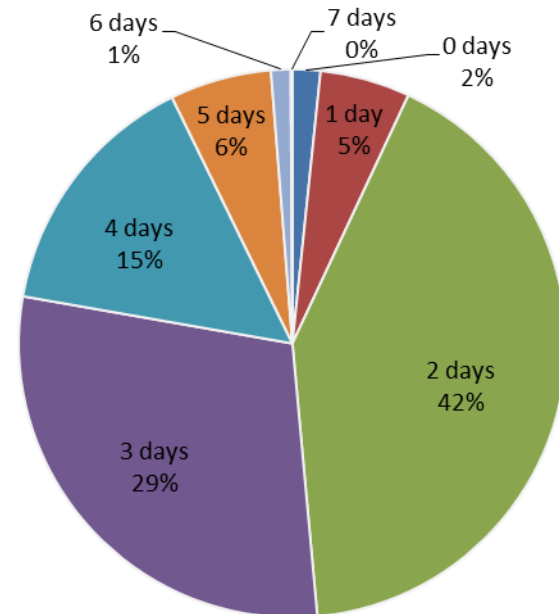
Total Number of Urgent Referrals per Month

July 2014-March 2015

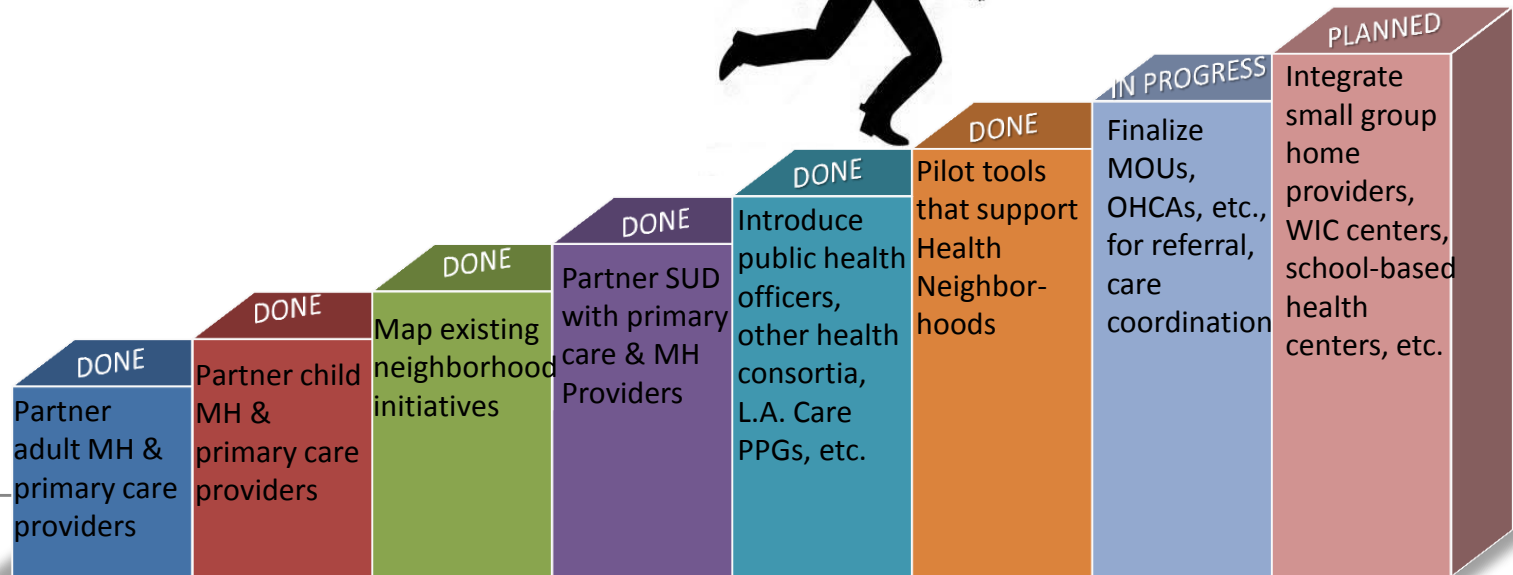


Number of Days from Referral to Initial Appointment

January 2014-March 2015



Organizing Service Delivery: Health Neighborhoods



Organizing Service Delivery: Health Neighborhoods

Health Neighborhood	Number of Health Neighborhood Partners			
	Mental Health	Health	Substance Abuse	Other
Lancaster	11	3	5	6
Pacoima	10	10	9	1
El Monte	9	3	6	1
Boyle Heights	11	5	4	2
MLK/Watts/Willowbrook	15	3	5	1
Southeast Los Angeles	7	4	6	1
Central Long Beach	7	2	2	2

*Some providers may offer more than one type of service. Each service is counted.

Organizing Service Delivery: Health Neighborhoods

An Example of Collaboration within the
Pacoima Health Neighborhood:

**FIRST 5
LA**

Caregivers of
DCFS involved
children need
more support

We have
Specialized Foster
Care Parent
Advocates that
can help!

**LAC
DMH**
LOS ANGELES COUNTY
DEPARTMENT OF
MENTAL HEALTH

Solution

- Biweekly meetings with 20 – 25 caregivers of DCFS involved children focusing on education and advocacy
- Collaborate with DCFS to develop curriculum with more topics on Child Welfare