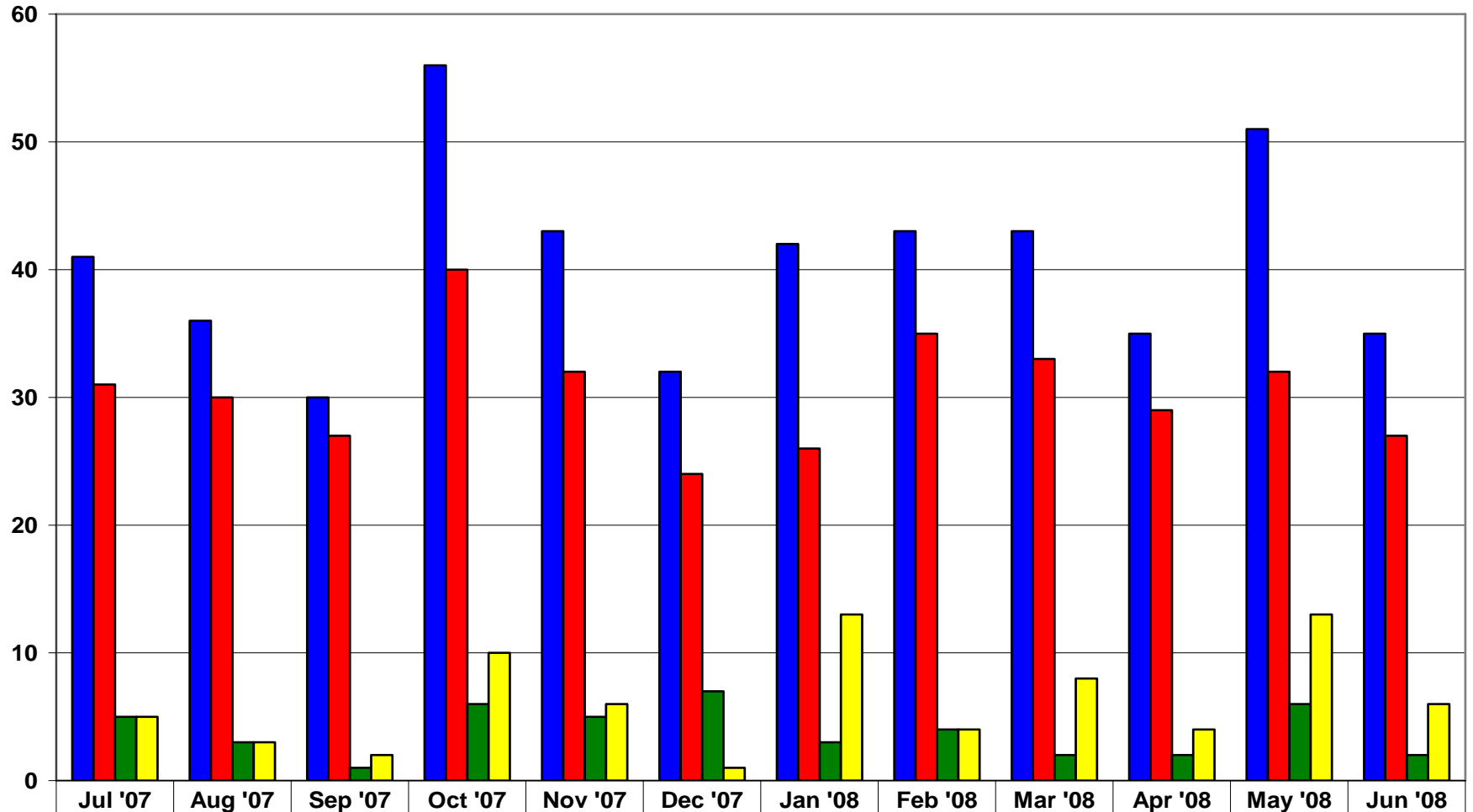


Residential and Bridging: FSP Referrals from County Hospitals, IMD, IMD Step-Down, and Sub-Acute by Age Group Fiscal Year 2007-2008

Total FSP Referrals 7/1/07 through 6/30/08



■ Total	41	36	30	56	43	32	42	43	43	35	51	35
■ Adult	31	30	27	40	32	24	26	35	33	29	32	27
■ Older Adult	5	3	1	6	5	7	3	4	2	2	6	2
■ TAY	5	3	2	10	6	1	13	4	8	4	13	6