

**COUNTY OF LOS ANGELES – DEPARTMENT OF MENTAL HEALTH  
PROGRAM SUPPORT BUREAU – MHSA IMPLEMENTATION AND OUTCOMES DIVISION**



WELLNESS • RECOVERY • RESILIENCE

**Prevention & Early Intervention: Crisis Oriented Recovery Services (CORS)**

**Countywide Aggregate Practice Outcomes Dashboard Report**

**Outcome Data Submission through February 22, 2016**

**Participating Legal Entities Include:**

ALCOTT CENTER FOR MHS	KEDREN COMMUNITY MENTAL HEALTH CTR	AUGUSTUS F HAWKINS FAMILY
ALMA FAMILY SERVICES	LOS ANGELES CHILD GUIDANCE	COASTAL API FAMILY MHC
AMANECER COMMUNITY COUNSELING SVC	MARYVALE	COMPTON FAMILY MHS
CALIF INSTITUTE HEALTH SOCIAL SVC	PERSONAL INVOLVEMENT CENTER INC	DMH AT HARBOR-UCLA MEDICAL
CENTER FOR INTEGRATED FAMILY HEALTH	SAINT JOHNS HEALTH CENTER	DOWNTOWN MENTAL HEALTH
CHILD AND FAMILY CENTER	SAN FERNANDO VALLEY COMMUNITY MHC	HOLLYWOOD MENTAL HEALTH
CHILD AND FAMILY GUIDANCE CENTER	SHIELDS FOR FAMILIES	LONG BEACH MHS ADULT CLIN
D VEAL FAMILY AND YOUTH SVC	SPECIAL SERVICE FOR GROUPS	NORTHEAST MENTAL HEALTH
DIDI HIRSCH PSYCHIATRIC SERVICE	ST JOSEPH CENTER	RIO HONDO COMMUNITY MHC
DIGNITY HEALTH DBA CAL HOSP MED CTR	STAR VIEW BEHAVIORAL HEALTH INC	ROYBAL FAMILY MHS
DREW CHILD DEVELOPMENT CORPORATION	THE VILLAGE FAMILY SERVICES	SAN ANTONIO MENTAL HEALTH
EL CENTRO DE AMISTAD INC	VIP COMMUNITY MENTAL HEALTH CTR INC	SAN PEDRO MENTAL HEALTH
ENKI HEALTH AND RESEARCH SYSTEMS I	<b>L.A. COUNTY DMH</b>	SOUTH BAY MHS
FOOTHILL FAMILY SERVICE	ANTELOPE VALLEY MHC	WEST CENTRAL FAMILY MHS
HERITAGE CLINIC	AMERICAN INDIAN COUNSELIN	
HILLVIEW MENTAL HEALTH CENTER INC	ARCADIA MHS	

**Agencies submitting outcomes that are not approved to provide CORS by PEI Administration:**

JEWISH FAMILY SERVICE OF LOSANGELES	<b>L.A. COUNTY DMH</b>
PENNY LANE CENTERS	ROYBAL SCHOOL BASED PROGRAM
TESSIE CLEVELAND COMM SRVC CORP	

Table 1. CORS Status Since Inception to February 22, 2016

# of Clients Claimed to Practice	# of Clients Entered into PEI OMA	# of Tx Cycles in PEI OMA	Clients with Multiple Tx Cycles	Clients Completing Tx	Clients Dropping-Out of Tx	Clients Still -In Tx
9195	30.77%	2930	3.25%	39.22%	26.86%	33.92%
n=	2829	n=	92	1149	787	994

Note 1: Clients Claimed was based on CORS being selected as the EBP in a PEI Plan and having  $\geq 2$  core services claimed to the practice starting July 1, 2011.

Note 2: Number of clients Completing Tx or Dropping-Out of Tx was determined by whether the EBP was said to be completed (e.g. answered “yes” or “no”) in the PEI OMA.

Table 2. Client Demographics - Clients Who Entered CORS

Total Number of Clients	Age	Gender			Ethnicity					Primary Language		
	Average	Female	Male	Unknown	African-American	Asian / Pacific Islander	Caucasian	Hispanic / Latino	Other	English	Spanish	Other
2829	19	52.03%	47.90%	0.07%	31.07%	1.84%	5.80%	56.24%	5.05%	70.34%	27.39%	2.26%
n=		1472	1355	2	879	52	164	1591	143	1990	775	64

Note 1: Age is calculated at the date of the first EBP.

Note 2: Percentages may not total 100 due to missing data and/or rounding errors.

Table 3. Top 5 Most Frequently Reported DSM-IV Primary Axis Diagnosis - Clients Who Entered CORS

Total Treatment Cycles	Depressive Disorder NOS	Mood Disorder NOS	Attention-Deficit/Hyperactivity Disorder, Combined Type or Hyperactive Impulse Type	Disruptive Behavior Disorder NOS	Anxiety Disorder NOS	Other
2930	14.74%	9.62%	6.45%	5.53%	5.26%	54.06%
n=	432	282	189	162	154	1584

NOTE: The above table reflects diagnoses entered PEI OMA from July 1, 2011 through October 27, 2015.

\*See breakout of “Other” on the supplemental information page.

Table 4. Program Process Data - Clients Who Entered CORS			
Outcome Measures Administered	Pre-Test with Scores	Post-test with Scores	Clients Who Completed both a Pre and Post Measure with Scores
Youth Outcome Questionnaire - 2.01 (Parent)	84.23%	63.95%	31.18%
	n= 1645	690	609
	Ackn= 1953	1079	1953
Youth Outcome Questionnaire – Self Report – 2.0 (YOQ-SR)	82.16%	64.60%	27.52%
	n= 806	312	270
	Ackn= 981	483	981
Outcome Questionnaire - 45.2	82.63%	51.02%	19.46%
	n= 709	200	167
	Ackn= 858	392	858

Note 1: Number of acknowledged measures (Ackn=) is determined by the number of required measures that receive a score or an unable to collect reason code.

Note 2: The % indicated for Pre-test with scores, Post-test with scores, and both a Pre- and Post-test with scores is calculated by dividing the (n=#) by the number acknowledged (Ackn=#) in the PEI OMA system for each measure. The number acknowledged (Ackn=#) for those with Pre and Post scores is an estimate based on the greatest number of matches that could be expected given the number of Pre scores acknowledged.

Table 5a. Top Reasons Given for "Unable to Collect"

Youth Outcome Questionnaire - 2.01 (Parent)	Total Pre 308	Parent/care provider unavailable	Administration date exceeds acceptable range	Outcome measure unavailable	Invalid outcome measure	Parent/care provider refused	Other Reasons
	percent	36.36%	25.65%	11.04%	10.39%	6.17%	10.39%
	n	112	79	34	32	19	32
	Total Post 389	Parent/care provider unavailable	Administration date exceeds acceptable range	Premature termination	Outcome measure unavailable	Parent/care provider refused	Other Reasons
	percent	37.02%	17.22%	16.20%	10.80%	6.17%	12.60%
	n	144	67	63	42	24	49

Table 5b. Top Reasons Given for "Unable to Collect"

Youth Outcome Questionnaire Self Report – 2.0 (YOQ-SR)	Total Pre 175	Administration date exceeds acceptable range	Outcome measure unavailable	Client unavailable	Invalid outcome measure	Client refused	Other Reasons
	percent	24.00%	19.43%	18.29%	12.00%	10.29%	16.00%
	n	42	34	32	21	18	28
	Total Post 171	Client unavailable	Premature termination	Administration date exceeds acceptable range	Lost contact with client	Outcome measure unavailable	Other Reasons
	percent	22.81%	20.47%	18.71%	13.45%	8.77%	15.79%
	n	39	35	32	23	15	27

Table 5c. Top Reasons Given for "Unable to Collect"							
Outcome Questionnaire - 45.2	Total Pre 149	Outcome measure unavailable	Clinician not trained in outcome measure	Client refused	Administration date exceeds acceptable range	Client unavailable	Other Reasons
	percent	18.12%	17.45%	15.44%	15.44%	14.09%	19.46%
	n	27	26	23	23	21	29
	Total Post 192	Client unavailable	Lost contact with client	Administration date exceeds acceptable range	Premature termination	Client refused	Other Reasons
	percent	30.21%	21.35%	9.38%	9.38%	8.85%	20.83%
	n	58	41	18	18	17	40

Table 6. Service Delivery Data – Clients Who Completed CORS						
Total Treatment Cycles 1149	Average Length of Treatment in Weeks	Range of Treatment Weeks		Average Number of Sessions	Range of Sessions	
	10	Min 0	Max 69	8	Min 1	Max 105

Note: Completed CORS is defined as having a 'yes' for completion indicated in the PEI OMA.

<b>Table 7. Outcome Data* – Clients who Completed CORS</b>					
		<b>Percent Improvement from Pre to Post</b>	<b>Percent of Clients Showing Reliable Change* from Pre-CORS to Post-CORS</b>		
			<b>Positive Change</b>	<b>No change</b>	<b>Negative Change</b>
<b>Youth Outcome Questionnaire (YOQ) - 2.01 (Parent)</b>	<b>TOTAL</b>	27.49%	44.50%	45.65%	9.85%
		(n=609)	271	278	60
<b>Youth Outcome Questionnaire - Self Report - 2.0 (YOQ-SR)</b>	<b>TOTAL</b>	28.68%	40.74%	50.74%	8.52%
		(n=270)	110	137	23
<b>Outcome Questionnaire - 45.2</b>	<b>TOTAL</b>	20.98%	38.32%	53.89%	7.78%
		(n=167)	64	90	13

\*Please see Appendix A. for a description of the

CORS outcome measures and the outcome indicators (percent improvement in average scores; and, percent of clients showing reliable change).

Note 2: Possible YOQ-Parent Total Scores can range from -16 to 240, with a clinical cutpoint of 46

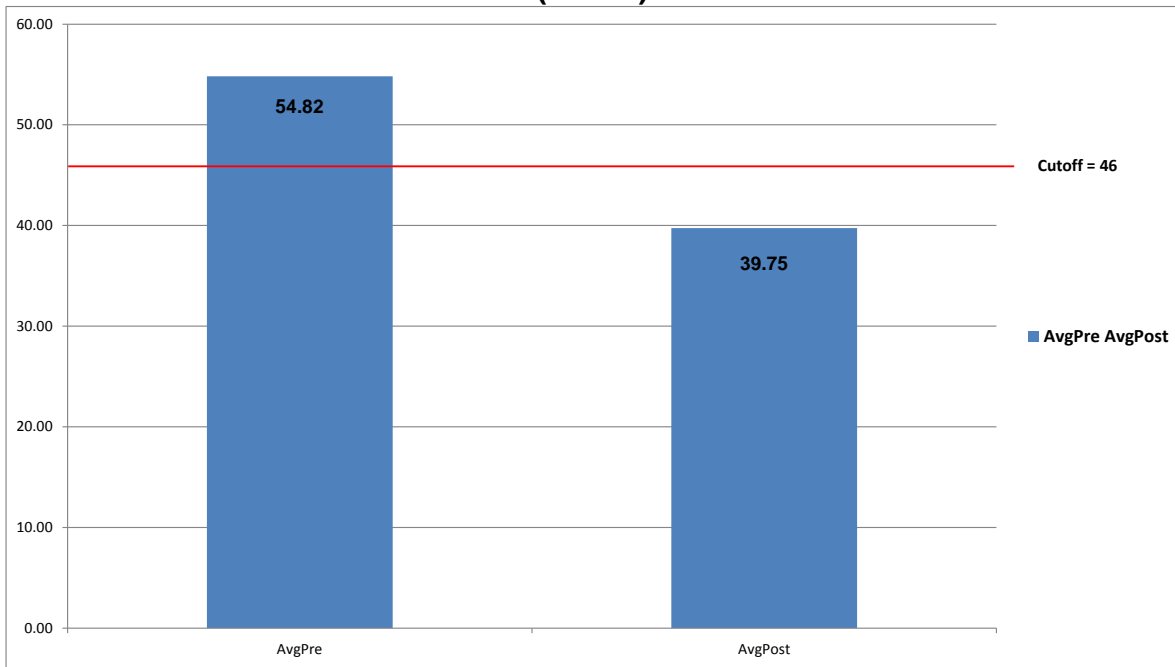
Note 3: Possible YOQ-SR Total Scores can range from -16 to 240, with a clinical cutpoint of 47.

Note 4: Possible OQ-45.2 Total Score can range from 0 to 180, with a clinical cutpoint of 64.

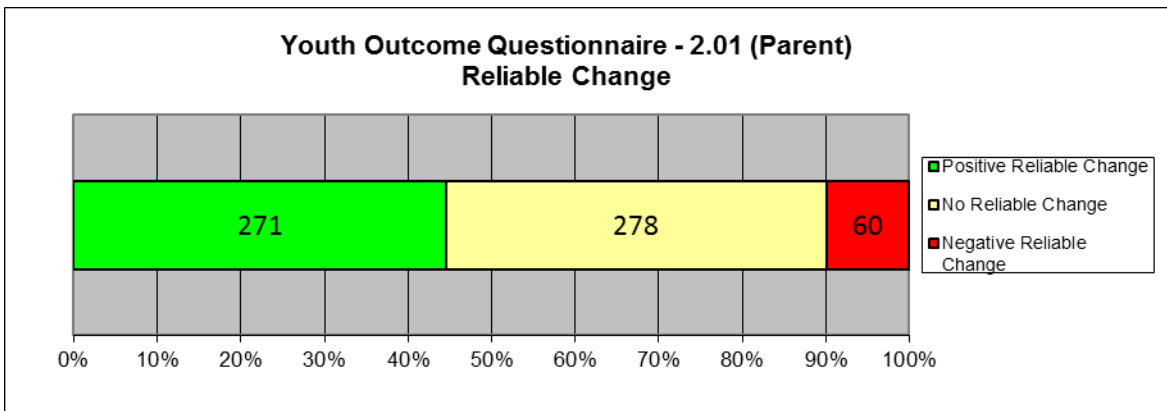
Note 5: Aggregate outcome data based on fewer than 20 clients are not reported.

Note 6: Positive Change indicates that the scores decreased from the pre to the post measures.

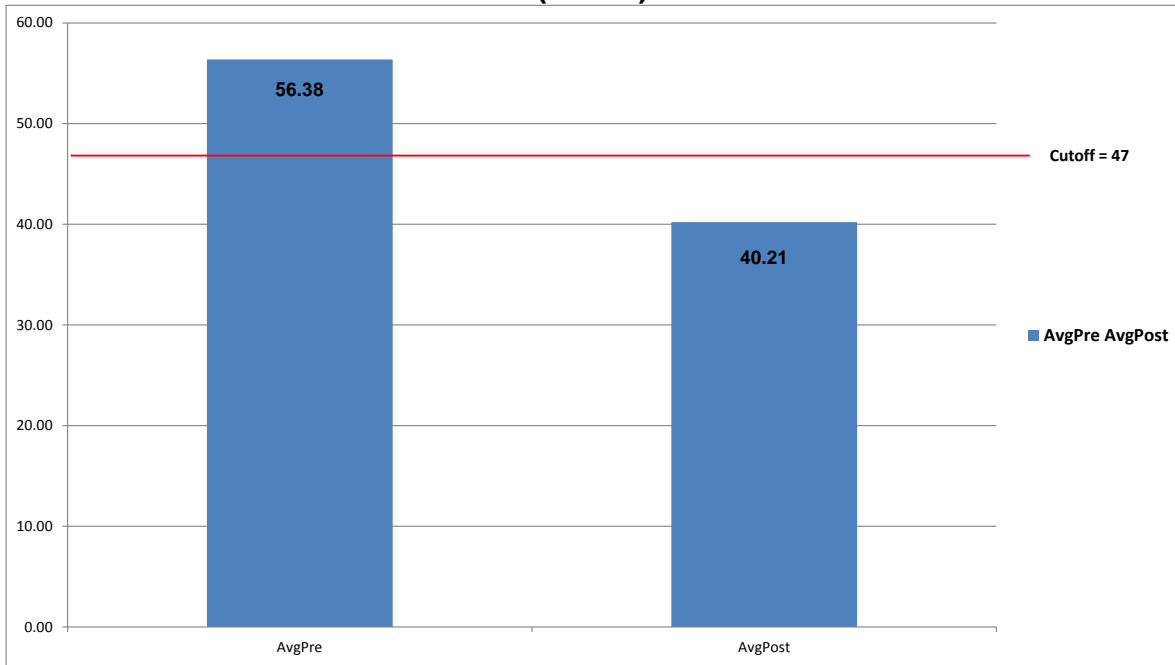
### Youth Outcome Questionnaire (YOQ) - 2.01 (Parent) (n=609)



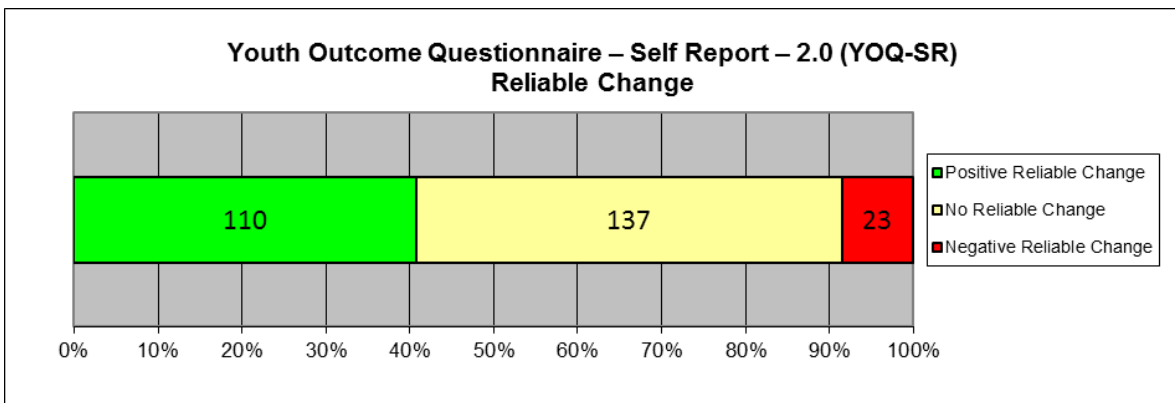
### Youth Outcome Questionnaire - 2.01 (Parent) Reliable Change



**Youth Outcome Questionnaire – Self Report – 2.0 (YOQ-SR)  
(n=270)**

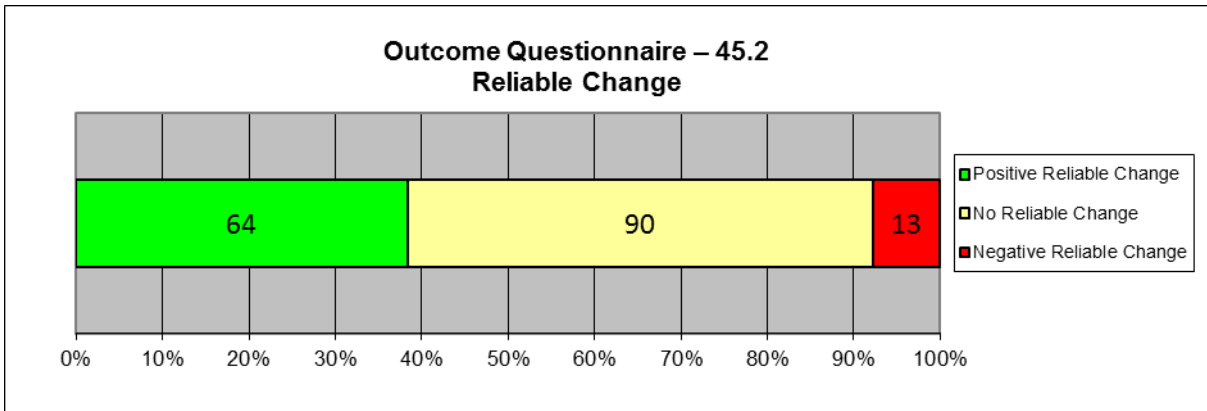
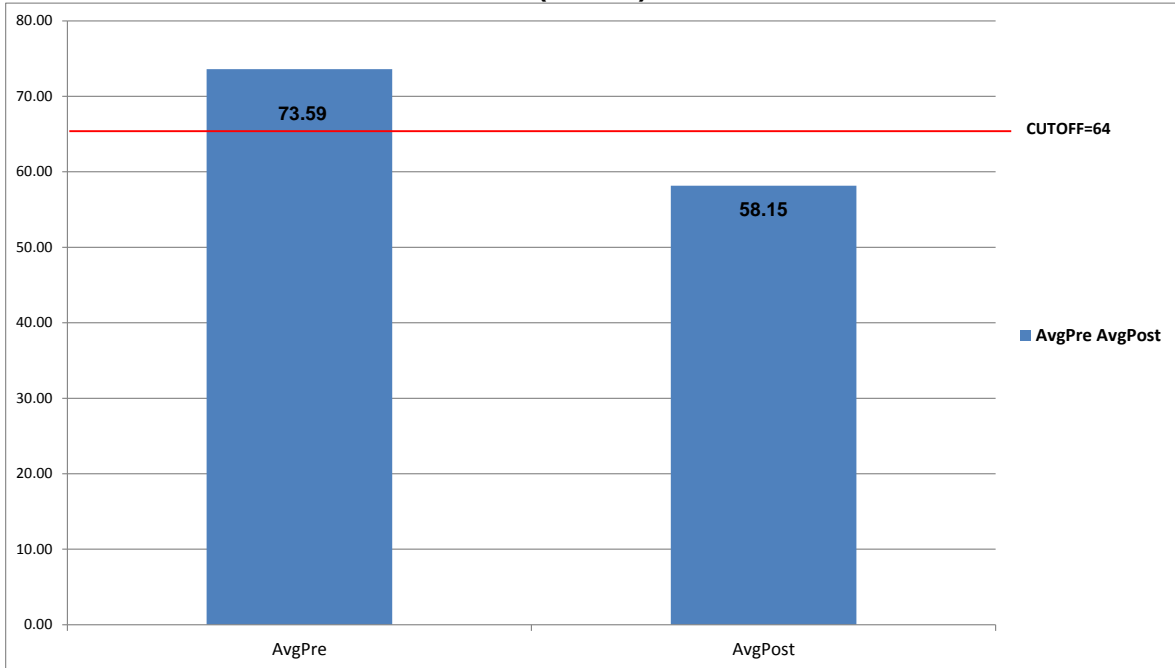


**Youth Outcome Questionnaire – Self Report – 2.0 (YOQ-SR)  
Reliable Change**





### Outcome Questionnaire – 45.2 (n=167)



## Appendix

### Youth Outcomes Questionnaires ( YOQ (Parent) and YOQ-SR)

The Youth Outcome Questionnaire is a 64-item parent-report that assesses global distress in a child's/adolescent's life from 4-17 years of age. The YOQ-SR is the Self-report version of the YOQ and is completed by the child/adolescent him or herself. Scores on both measures can range from -16 to 240. Scores of 46 or higher are most similar to a clinical population on the YOQ. A score of 47 is most similar to that of a clinical population on the YOQ-SR.

### Outcomes Questionnaires (OQ)

The Outcome Questionnaire is a 45-item self-report that assesses global distress in a client's life from ages 19 and older. Total Scores on this measure can range from 0 to 180, with scores of 64 or higher indicating clinical significance.

### Reliable Change Index

When comparing Pre and Post scores, it is very helpful to know whether the change reported represents the real effects of the treatment or errors in the system of measurement. The Reliability of Change Index (RCI) is a statistical way of helping to insure that the change recorded between pre and post assessments exceeds that which would be expected on the basis of measurement error alone. The RCI has been calculated using the Jacobson and Truax (1991) method and indicates when change exceeds that which would be expected on the basis of error at the  $p < .05$  probability level. For a more in-depth discussion of Reliability of Change see Jacobson, N. S., & Truax, P. (1991). Clinical Significance: A statistical approach to defining meaningful change in psychotherapy research. *Journal of Consulting and Clinical Psychology*, 59, 12-19. Also see Wise, E. A. (2004). Methods for analyzing psychotherapy outcomes: A review of clinical significance, reliable change, and recommendations for future directions. *Journal of Personality Assessment*, 82(1), 50-59.

The number and percent of clients experiencing positive change, no change and negative change are recorded in table 6. Healthful change in each of the measures cited here means that scores have decreased in value from pre to post test administrations (i.e. recorded a negative change on the RCI). To help avoid confusion, healthful reliable change is presented as positive while unhealthful reliable change is presented as negative change.

### Supplemental Information for Table 3 “Other” Diagnosis Category

DSM-IV Primary Axis Diagnosis - Clients Who Entered CORS	n	Percent
Adjustment Disorder With Anxiety and Depressed Mood	140	6.29%
Post-Traumatic Stress Disorder	128	5.75%
Adjustment Disorder With Depressed Mood	125	5.61%
Adjustment Disorder Unspecified	92	4.13%
Psychotic Disorder NOS	91	4.09%
Oppositional Defiant Disorder	83	3.73%
Major Depressive Disorder, Recurrent, Moderate	64	2.87%
Adjustment Disorder W/Mixed Disturbance Emotion and Conduct	61	2.74%
Adjustment Disorder With Anxiety	53	2.38%
Major Depressive Disorder, Rec., Severe W/O Psychotic Features	53	2.38%
Major Depressive Disorder, Rec., Severe With Psychotic Features	53	2.38%
Dysthymic Disorder	49	2.20%
Generalized Anxiety Disorder	48	2.16%
Attention-Deficit/Hyperactivity Disorder NOS	47	2.11%
Major Depressive Disorder, Single Episode, Unspecified	44	1.98%
Disorder of Infancy, Childhood, or Adolescence NOS	39	1.75%
Attention-Deficit/Hyperactivity Disorder, Predominantly Inattentive Type	38	1.71%
Adjustment Disorder With Disturbance of Conduct	35	1.57%
Major Depressive Disorder, Single Episode, Moderate	28	1.26%
Major Depressive Disorder, Single Episode, Mild	26	1.17%
Major Depressive Disorder, Recurrent, Unspecified	19	0.85%
Bipolar Disorder NOS	19	0.85%
Acute Stress Disorder	19	0.85%
Major Depressive Disorder, Recurrent, Mild	16	0.72%
Schizophrenia, Paranoid Type	15	0.67%
Schizoaffective Disorder	14	0.63%
Major Depressive Disorder, SE, Severe W/O Psychotic Features	14	0.63%
Separation Anxiety Disorder	14	0.63%
Panic Disorder Without Agoraphobia	13	0.58%
Pervasive Developmental Disorder NOS/Asperger's Disorder/Rett's Disorder	12	0.54%
Diagnosis Deferred (code invalid as Secondary/Axis II Diagnosis)	12	0.54%
Conduct Disorder, Adolescent-Onset Type	11	0.49%
Obsessive-Compulsive Disorder	10	0.45%
Major Depressive Disorder, SE, Severe With Psychotic Features	10	0.45%
Impulse-Control Disorder NOS	9	0.40%
Panic Disorder With Agoraphobia	8	0.36%
Mood Disorder Due to ...(Indicate Medical Condition)	7	0.31%
Conduct Disorder, Childhood-Onset Type	6	0.27%

No Diagnosis (code invalid as Secondary/Axis III Diagnosis)	6	0.27%
Bipolar II Disorder	5	0.22%
Brief Psychotic Disorder	4	0.18%
Social Phobia	4	0.18%
Bipolar I Disorder, Single Manic Episode, Unspecified	3	0.13%
Schizophrenia, Undifferentiated Type	2	0.09%
Bipolar I Disorder, MRE, Depressed, Severe With Psychotic Features	2	0.09%
Bipolar I Disorder, MRE, Mixed, Severe With Psychotic Features	2	0.09%
Cannabis Abuse	2	0.09%
Learning Disorder NOS	2	0.09%
Encopresis W/Constipation and Overflow Incontinence	1	0.04%
Identity Problem	1	0.04%
Selective Mutism	1	0.04%
Intermittent Explosive Disorder	1	0.04%
Bulemia Nervosa	1	0.04%
Unspecified Mental Disorder (Nonpsychotic)	1	0.04%
Polysubstance Dependence	1	0.04%
Specific Phobia	1	0.04%
Conversion Disorder	1	0.04%
Dissociative Amnesia	1	0.04%
Bipolar I Disorder, MRE, Unspecified	1	0.04%
Bipolar I Disorder, MRE, Mixed, Severe W/O Psychotic Features	1	0.04%
Major Depressive Disorder, Recurrent, In Partial Remission	1	0.04%
Major Depressive Disorder, Recurrent, In Full Remission	1	0.04%
Bipolar I Disorder, MRE, Manic, Severe With Psychotic Features	1	0.04%
Autistic Disorder	1	0.04%
Delusional Disorder	1	0.04%
Bipolar I Disorder, Single Manic Episode, Mild	1	0.04%
Bipolar I Disorder, Single Manic Episode, Moderate	1	0.04%
Bipolar I, SME, Severe W/O Psychotic Features	1	0.04%
Drug Induced Psychotic Disorder, With Delusions	1	0.04%
Drug Induced Psychotic Disorder, With Hallucinations	1	0.04%
Drug Induced Mood Disorder	1	0.04%
Drug Related Disorder NOS	1	0.04%
Psychotic Disorder Due to ...(Indicate Medical Condition) with Delusions	1	0.04%
Occupational Problem	1	0.04%
Bereavement	1	0.04%
Bipolar I Disorder, Single Manic Episode, Moderate	1	0.04%
TOTAL	1585	71.17%

\*Percentage is not exact due to rounding errors.