

**COUNTY OF LOS ANGELES – DEPARTMENT OF MENTAL HEALTH
PROGRAM SUPPORT BUREAU – MHSA IMPLEMENTATION AND OUTCOMES DIVISION**



WELLNESS • RECOVERY • RESILIENCE

Prevention & Early Intervention: Crisis Oriented Recovery Services (CORS)

Countywide Aggregate Practice Outcomes Dashboard Report

Outcome Data Submission through June 30, 2015

Participating Legal Entities Include:

ALCOTT CENTER FOR MHS	LOS ANGELES CHILD GUIDANCE	COASTAL API FAMILY MHC
ALMA FAMILY SERVICES	MARYVALE	COMPTON FAMILY MHS
AMANECER COMMUNITY COUNSELING SVC	PERSONAL INVOLVEMENT CENTER INC	DMH AT HARBOR-UCLA MEDICAL
CALIF INSTITUTE HEALTH SOCIAL SVC	SAINT JOHNS HEALTH CENTER	DOWNTOWN MENTAL HEALTH
CENTER FOR INTEGRATED FAMILY HEALTH	SAN FERNANDO VALLEY COMMUNITY MHC	HOLLYWOOD MENTAL HEALTH
CHILD AND FAMILY CENTER	SHIELDS FOR FAMILIES	LONG BEACH MHS ADULT CLIN
D VEAL FAMILY AND YOUTH SVC	SPECIAL SERVICE FOR GROUPS	NORTHEAST MENTAL HEALTH
DIDI HIRSCH PSYCHIATRIC SERVICE	ST JOSEPH CENTER	RIO HONDO COMMUNITY MHC
DIGNITY HEALTH DBA CAL HOSP MED CTR	STAR VIEW BEHAVIORAL HEALTH INC	ROYBAL FAMILY MHS
DREW CHILD DEVELOPMENT CORPORATION	VIP COMMUNITY MENTAL HEALTH CTR INC	SAN ANTONIO MENTAL HEALTH
EL CENTRO DE AMISTAD INC	L.A. COUNTY DMH	SAN PEDRO MENTAL HEALTH
ENKI HEALTH AND RESEARCH SYSTEMS I	ANTELOPE VALLEY MHC	SOUTH BAY MHS
HERITAGE CLINIC	AMERICAN INDIAN COUNSELIN	WEST CENTRAL FAMILY MHS
HILLVIEW MENTAL HEALTH CENTER INC	ARCADIA MHS	
KEDREN COMMUNITY MENTAL HEALTH CTR	AUGUSTUS F HAWKINS FAMILY	

Agencies submitting outcomes that are not approved to provide CORS by PEI Administration:

CHILD AND FAMILY GUIDANCE CENTER	TESSIE CLEVELAND COMM SRVC CORP
JEWISH FAMILY SERVICE OF LOSANGELES	L.A. COUNTY DMH
PENNY LANE CENTERS	ROYBAL SCHOOL BASED PROGRAM

Table 1. CORS Status Since Inception to June 30, 2015

# of Clients Claimed to Practice	# of Clients Entered into PEI OMA	# of Tx Cycles in PEI OMA	Clients with Multiple Tx Cycles	Clients Completing Tx	Clients Dropping-Out of Tx	Clients Still -In Tx
8586	28.81%	2545	2.67%	38.82%	26.29%	34.89%
n=	2474	n=	66	988	669	888

Note 1: Clients Claimed was based on CORS being selected as the EBP in a PEI Plan and having ≥ 2 core services claimed to the practice starting July 1, 2011.

Note 2: Number of clients Completing Tx or Dropping-Out of Tx was determined by whether the EBP was said to be completed (e.g. answered “yes” or “no”) in the PEI OMA.

Table 2. Client Demographics - Clients Who Entered CORS

Total Number of Clients	Age	Gender			Ethnicity					Primary Language		
	Average	Female	Male	Unknown	African-American	Asian / Pacific Islander	Caucasian	Hispanic / Latino	Other	English	Spanish	Other
2474	20	51.94%	47.98%	0.08%	31.08%	1.94%	6.18%	55.50%	5.30%	70.61%	27.08%	2.30%
n=		1285	1187	2	769	48	153	1373	131	1747	670	57

Note 1: Age is calculated at the date of the first EBP.

Note 2: Percentages may not total 100 due to missing data and/or rounding errors.

Table 3. Top 5 Most Frequently Reported DSM-IV Primary Axis Diagnosis - Clients Who Entered CORS

Total Treatment Cycles	Depressive Disorder NOS	Mood Disorder NOS	Attention-Deficit/Hyperactivity Disorder, Combined Type or Hyperactive Impulse Type	Disruptive Behavior Disorder NOS	Anxiety Disorder NOS	Other
2545	15.17%	9.31%	7.07%	5.82%	5.27%	57.37%
n=	386	237	180	148	134	1460

*See breakout of “Other” on the supplemental information page.

Table 4. Program Process Data - Clients Who Entered CORS			
Outcome Measures Administered	Pre-Test with Scores	Post-test with Scores	Clients Who Completed both a Pre and Post Measure with Scores
Youth Outcome Questionnaire - 2.01 (Parent)	83.85%	61.03%	30.86%
	n= 1391	556	512
	Ackn= 1659	911	1659
Youth Outcome Questionnaire – Self Report – 2.0 (YOQ-SR)	82.19%	62.44%	27.32%
	n= 692	256	230
	Ackn= 842	410	842
Outcome Questionnaire - 45.2	82.32%	50.00%	19.74%
	n= 638	170	153
	Ackn= 775	340	775

Note 1: Number of acknowledged measures (Ackn=) is determined by the number of required measures that receive a score or an unable to collect reason code.

Note 2: The % indicated for Pre-test with scores, Post-test with scores, and both a Pre- and Post-test with scores is calculated by dividing the (n=#) by the number acknowledged (Ackn=#) in the PEI OMA system for each measure. The number acknowledged (Ackn=#) for those with Pre and Post scores is an estimate based on the greatest number of matches that could be expected given the number of Pre scores acknowledged.

Table 5a. Top Reasons Given for "Unable to Collect"

Youth Outcome Questionnaire - 2.01 (Parent)	Total Pre 268	Parent/care provider unavailable	Administration date exceeds acceptable range	Invalid outcome measure	Outcome measure unavailable	Parent/care provider refused	Other Reasons
	percent	35.07%	27.61%	10.45%	9.70%	7.09%	10.07%
	n	94	74	28	26	19	27
	Total Post 355	Parent/care provider unavailable	Administration date exceeds acceptable range	Premature termination	Outcome measure unavailable	Lost contact with parent/care provider	Other Reasons
	percent	39.72%	18.03%	15.77%	8.45%	6.48%	11.55%
	n	141	64	56	30	23	41

Table 5b. Top Reasons Given for "Unable to Collect"

Youth Outcome Questionnaire Self Report - 2.0 (YOQ-SR)	Total Pre 150	Administration date exceeds acceptable range	Client unavailable	Outcome measure unavailable	Invalid outcome measure	Client refused	Other Reasons
	percent	26.67%	18.67%	18.67%	12.67%	12.00%	11.33%
	n	40	28	28	19	18	17
	Total Post 154	Client unavailable	Premature termination	Administration date exceeds acceptable range	Lost contact with client	Outcome measure unavailable	Other Reasons
	percent	24.03%	20.78%	19.48%	14.94%	8.44%	12.34%
	n	37	32	30	23	13	19

Table 5c. Top Reasons Given for "Unable to Collect"

Outcome Questionnaire - 45.2	Total Pre 137	Outcome measure unavailable	Clinician not trained in outcome measure	Client refused	Administration date exceeds acceptable range	Client unavailable	Other Reasons
	percent	19.71%	18.25%	15.33%	15.33%	11.68%	19.71%
	n	27	25	21	21	16	27
	Total Post 170	Client unavailable	Lost contact with client	Administration date exceeds acceptable range	Client refused	Outcome measure unavailable	Other Reasons
	percent	27.65%	22.35%	10.59%	9.41%	8.82%	21.18%
	n	47	38	18	16	15	36

Table 6. Service Delivery Data – Clients Who Completed CORS

Total Treatment Cycles 988	Average Length of Treatment in Weeks	Range of Treatment Weeks		Average Number of Sessions	Range of Sessions	
	10	Min 0	Max 69	8	Min 1	Max 49

Note: Completed CORS is defined as having a 'yes' for completion indicated in the PEI OMA.

Table 7. Outcome Data* – Clients who Completed CORS					
		Percent Improvement from Pre to Post	Percent of Clients Showing Reliable Change* from Pre-CORS to Post-CORS		
			Positive Change	No change	Negative Change
Youth Outcome Questionnaire (YOQ) - 2.01 (Parent)	TOTAL	27.03% (n=492)			
			43.50%	45.93%	10.57%
			214	226	52
Youth Outcome Questionnaire - Self Report - 2.0 (YOQ-SR)	TOTAL	29.32% (n=219)			
			41.10%	49.77%	9.13%
			90	109	20
Outcome Questionnaire - 45.2	TOTAL	20.86% (n=142)			
			36.62%	55.63%	7.75%
			52	79	11

*Please see Appendix A. for a description of the CORS outcome measures and the outcome indicators (percent improvement in average scores; and, percent of clients showing reliable change).

Note 2: Possible YOQ-Parent Total Scores can range from -16 to 240, with a clinical cutpoint of 46

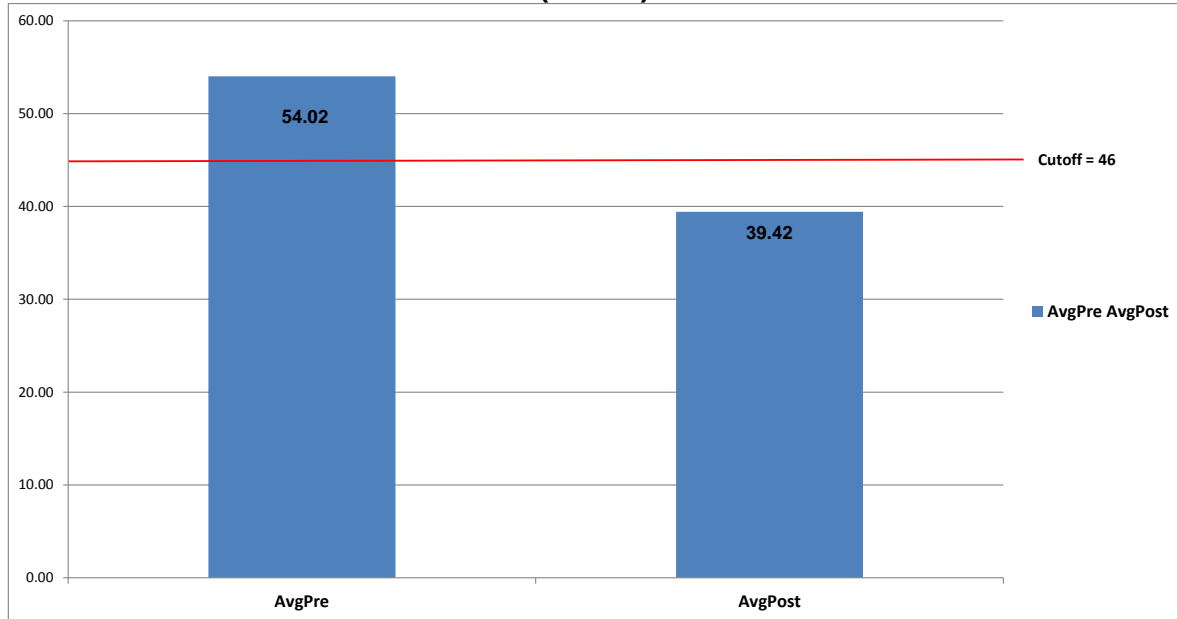
Note 3: Possible YOQ-SR Total Scores can range from -16 to 240, with a clinical cutpoint of 47.

Note 4: Possible OQ-45.2 Total Score can range from 0 to 180, with a clinical cutpoint of 64.

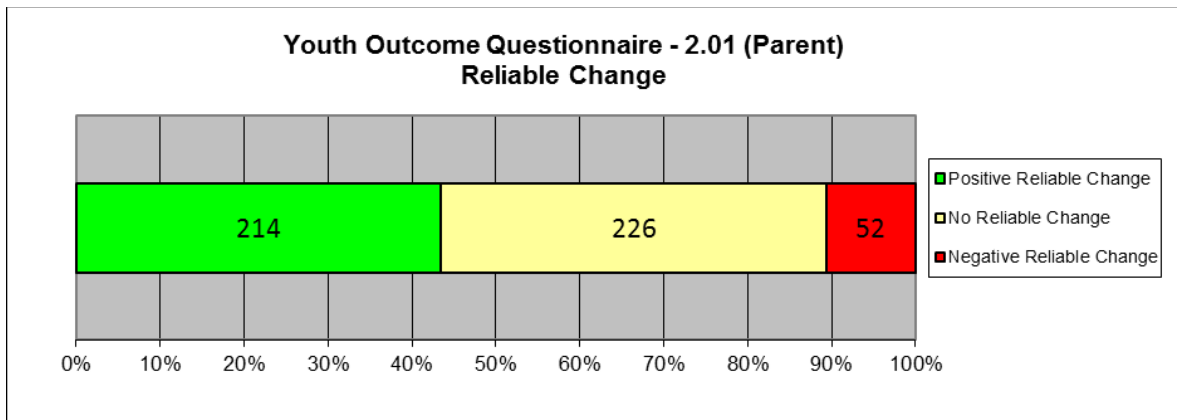
Note 5: Aggregate outcome data based on fewer than 20 clients are not reported.

Note 6: Positive Change indicates that the scores decreased from the pre to the post measures.

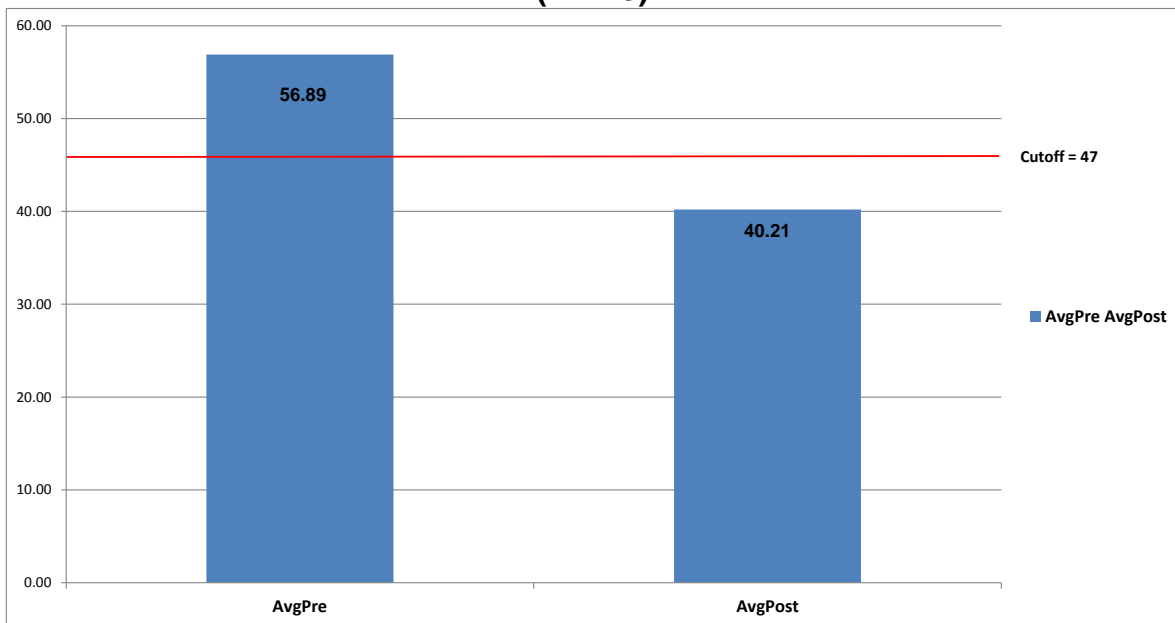
Youth Outcome Questionnaire (YOQ) - 2.01 (Parent)
(n=492)



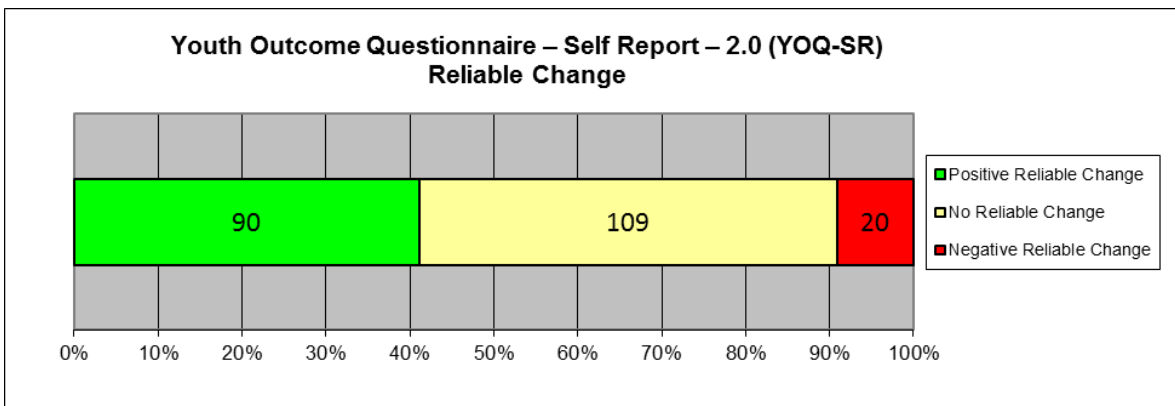
Youth Outcome Questionnaire - 2.01 (Parent)
Reliable Change



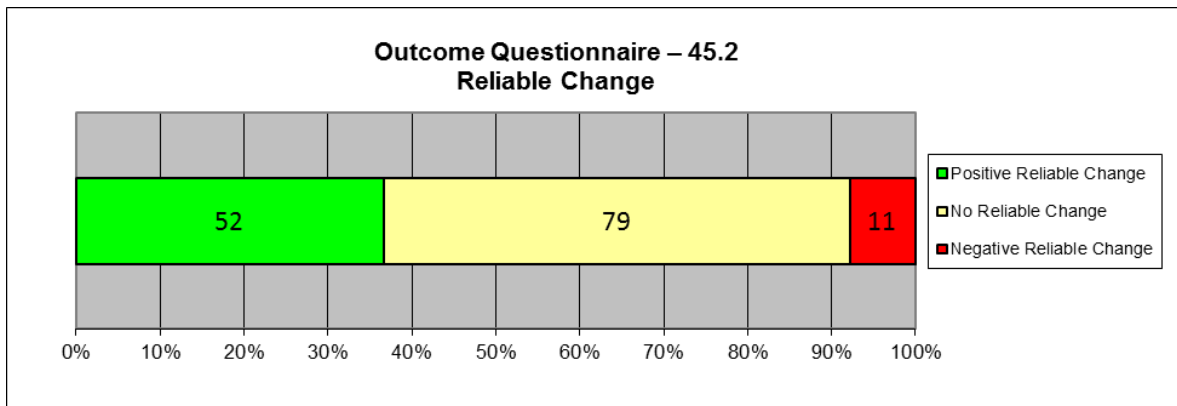
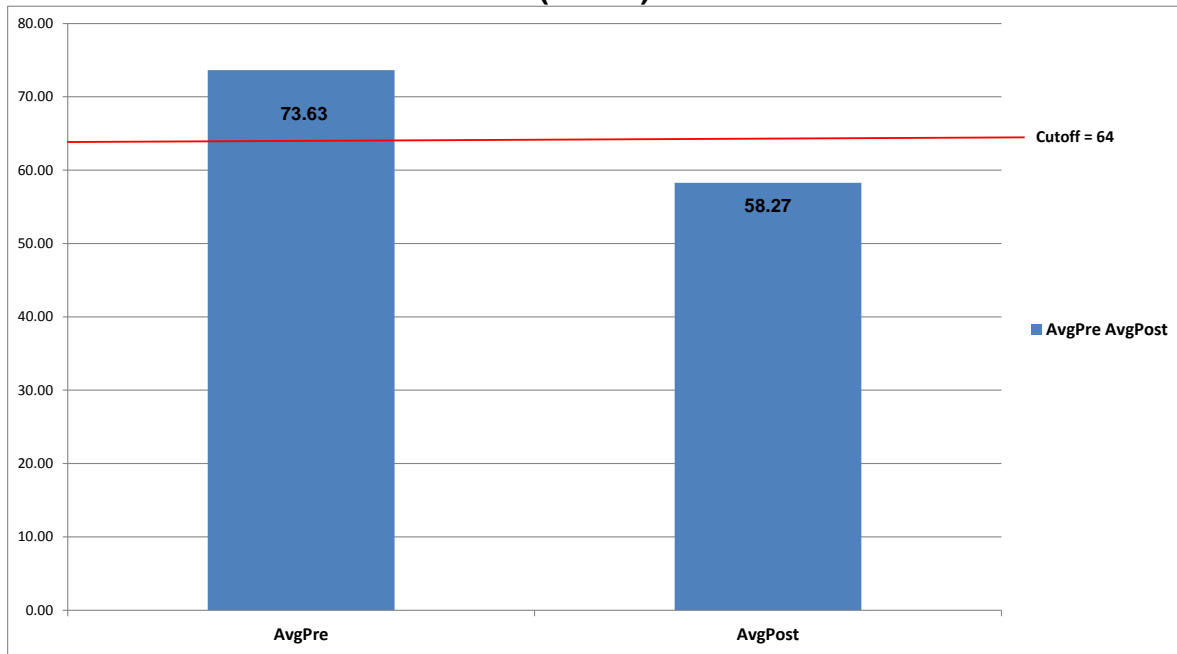
**Youth Outcome Questionnaire – Self Report – 2.0 (YOQ-SR)
(n=219)**



**Youth Outcome Questionnaire – Self Report – 2.0 (YOQ-SR)
Reliable Change**



Outcome Questionnaire – 45.2 (n=142)



Appendix

Youth Outcomes Questionnaires (YOQ (Parent) and YOQ-SR)

The Youth Outcome Questionnaire is a 64-item parent-report that assesses global distress in a child's/adolescent's life from 4-17 years of age. The YOQ-SR is the Self-report version of the YOQ and is completed by the child/adolescent him or herself. Scores on both measures can range from -16 to 240. Scores of 46 or higher are most similar to a clinical population on the YOQ. A score of 47 is most similar to that of a clinical population on the YOQ-SR.

Outcomes Questionnaires (OQ)

The Outcome Questionnaire is a 45-item self-report that assesses global distress in a client's life from ages 19 and older. Total Scores on this measure can range from 0 to 180, with scores of 64 or higher indicating clinical significance.

Reliable Change Index

When comparing Pre and Post scores, it is very helpful to know whether the change reported represents the real effects of the treatment or errors in the system of measurement. The Reliability of Change Index (RCI) is a statistical way of helping to insure that the change recorded between pre and post assessments exceeds that which would be expected on the basis of measurement error alone. The RCI has been calculated using the Jacobson and Truax (1991) method and indicates when change exceeds that which would be expected on the basis of error at the $p < .05$ probability level. For a more in-depth discussion of Reliability of Change see Jacobson, N. S., & Truax, P. (1991). Clinical Significance: A statistical approach to defining meaningful change in psychotherapy research. *Journal of Consulting and Clinical Psychology*, 59, 12-19. Also see Wise, E. A. (2004). Methods for analyzing psychotherapy outcomes: A review of clinical significance, reliable change, and recommendations for future directions. *Journal of Personality Assessment*, 82(1), 50-59.

The number and percent of clients experiencing positive change, no change and negative change are recorded in table 6. Healthful change in each of the measures cited here means that scores have decreased in value from pre to post test administrations (i.e. recorded a negative change on the RCI). To help avoid confusion, healthful reliable change is presented as positive while unhealthful reliable change is presented as negative change.

Supplemental Information for Table 3 “Other” Diagnosis Category

DSM-IV Primary Axis Diagnosis - Clients Who Entered CORS	n	Percent
Adjustment Disorder With Anxiety and Depressed Mood	130	8.90%
Adjustment Disorder With Depressed Mood	116	7.95%
Post-Traumatic Stress Disorder	107	7.33%
Adjustment Disorder Unspecified	85	5.82%
Oppositional Defiant Disorder	77	5.27%
Psychotic Disorder NOS	77	5.27%
Major Depressive Disorder, Recurrent, Moderate	60	4.11%
Adjustment Disorder W/Mixed Disturbance Emotion and Conduct	60	4.11%
Major Depressive Disorder, Rec., Severe W/O Psychotic Features	52	3.56%
Major Depressive Disorder, Rec., Severe With Psychotic Features	51	3.49%
Adjustment Disorder With Anxiety	49	3.36%
Dysthymic Disorder	47	3.22%
Generalized Anxiety Disorder	46	3.15%
Major Depressive Disorder, Single Episode, Unspecified	44	3.01%
Attention-Deficit/Hyperactivity Disorder NOS	40	2.74%
Attention-Deficit/Hyperactivity Disorder, Predominantly Inattentive Type	36	2.47%
Adjustment Disorder With Disturbance of Conduct	33	2.26%
Disorder of Infancy, Childhood, or Adolescence NOS	30	2.05%
Major Depressive Disorder, Single Episode, Moderate	24	1.64%
Major Depressive Disorder, Single Episode, Mild	23	1.58%
Bipolar Disorder NOS	19	1.30%
Major Depressive Disorder, Recurrent, Unspecified	18	1.23%
Acute Stress Disorder	17	1.16%
Schizophrenia, Paranoid Type	15	1.03%
Major Depressive Disorder, Recurrent, Mild	15	1.03%
Schizoaffective Disorder	14	0.96%
Major Depressive Disorder, SE, Severe W/O Psychotic Features	13	0.89%
Diagnosis Deferred (code invalid as Secondary/Axis II Diagnosis)	12	0.82%
Pervasive Developmental Disorder NOS/Asperger's Disorder/Rett's Disorder	12	0.82%
Panic Disorder Without Agoraphobia	12	0.82%
Separation Anxiety Disorder	12	0.82%
Conduct Disorder, Adolescent-Onset Type	11	0.75%
Obsessive-Compulsive Disorder	9	0.62%
Major Depressive Disorder, SE, Severe With Psychotic Features	8	0.55%
Panic Disorder With Agoraphobia	8	0.55%
Impulse-Control Disorder NOS	7	0.48%
Conduct Disorder, Childhood-Onset Type	7	0.48%
Mood Disorder Due to ...(Indicate Medical Condition)	6	0.41%

No Diagnosis (code invalid as Secondary/Axis III Diagnosis)	6	0.41%
Bipolar II Disorder	5	0.34%
Brief Psychotic Disorder	4	0.27%
Social Phobia	3	0.21%
Bipolar I Disorder, Single Manic Episode, Unspecified	3	0.21%
Schizophrenia, Undifferentiated Type	2	0.14%
Bipolar I Disorder, MRE, Depressed, Severe With Psychotic Features	2	0.14%
Bipolar I Disorder, MRE, Mixed, Severe With Psychotic Features	2	0.14%
Learning Disorder NOS	2	0.14%
Cannabis Abuse	2	0.14%
Selective Mutism	1	0.07%
Identity Problem	1	0.07%
Bipolar I, SME, Severe W/O Psychotic Features	1	0.07%
Drug Induced Psychotic Disorder, With Delusions	1	0.07%
Drug Induced Mood Disorder	1	0.07%
Unspecified Mental Disorder (Nonpsychotic)	1	0.07%
Delusional Disorder	1	0.07%
Encopresis W/Constipation and Overflow Incontinence	1	0.07%
Intermittent Explosive Disorder	1	0.07%
Occupational Problem	1	0.07%
Bipolar I Disorder, MRE, Mixed, Severe W/O Psychotic Features	1	0.07%
Bipolar I Disorder, MRE, Unspecified	1	0.07%
Polysubstance Dependence	1	0.07%
Autistic Disorder	1	0.07%
Dissociative Amnesia	1	0.07%
Drug Induced Psychotic Disorder, With Hallucinations	1	0.07%
Bipolar I Disorder, Single Manic Episode, Moderate	1	0.07%
Drug Related Disorder NOS	1	0.07%
Bulimia Nervosa	1	0.07%
Parent-Child Relational Problem	1	0.07%
Bereavement	1	0.07%
Psychotic Disorder Due to ...(Indicate Medical Condition) with Delusions	1	0.07%
Major Depressive Disorder, Recurrent, In Partial Remission	1	0.07%
Major Depressive Disorder, Recurrent, In Full Remission	1	0.07%
Conversion Disorder	1	0.07%
Specific Phobia	1	0.07%
Bipolar I Disorder, MRE, Manic, Severe With Psychotic Features	1	0.07%
TOTAL	1460	100.00%

*Percentage is not exact due to rounding errors.