

**COUNTY OF LOS ANGELES – DEPARTMENT OF MENTAL HEALTH  
PROGRAM SUPPORT BUREAU – MHSA IMPLEMENTATION AND OUTCOMES DIVISION**



WELLNESS • RECOVERY • RESILIENCE

**Prevention & Early Intervention: Crisis Oriented Recovery Services (CORS)**

**Countywide Aggregate Practice Outcomes Dashboard Report**

**Outcome Data Submission through March 16, 2015**

**Participating Legal Entities Include:**

ALCOTT CENTER FOR MENTAL HEALTH SER	MARYVALE	ARCADIA MHS
AMANEKER COMMUNITY COUNSELING SRVC	PENNY LANE CENTERS	LONG BEACH MHS ADULT CLIN
CALIF INSTITUTE HEALTH SOCIAL SERV	PERSONAL INVOLVEMENT CENTER INC	SAN PEDRO MENTAL HEALTH S
CENTER FOR INTEGRATED FAMILY HEALTH	SAINT JOHNS HEALTH CENTER	RIO HONDO COMMUNITY MHC
CHILD AND FAMILY CENTER	SAN FERNANDO VALLEY COMMUNITY MHC	SOUTH BAY MHS
D VEAL FAMILY AND YOUTH SVC	SPECIAL SERVICE FOR GROUPS	COMPTON FAMILY MHS
DIDI HIRSCH PSYCHIATRIC SERVICE	ST JOSEPH CENTER	ROYBAL FAMILY MHS
DIGNITY HEALTH DBA CAL HOSP MED CTR	STAR VIEW ADOLESCENT CENTER INC	DMH AT HARBOR-UCLA MEDICA
DREW CHILD DEVELOPMENT CORPORATION	VIP COMMUNITY MENTAL HEALTH CTR INC	AUGUSTUS F HAWKINS FAMILY
EL CENTRO DE AMISTAD INC	AMANEKER COMMUNITY COUNSELING SERVICES	DOWNTOWN MENTAL HEALTH CE
ENKI HEALTH AND RESEARCH SYSTEMS I	<b>L.A. COUNTY DMH</b>	COASTAL API FAMILY MHC
HERITAGE CLINIC AND THE COMM FOR SE	ANTELOPE VALLEY MHC	AMERICAN INDIAN COUNSELIN
HILLVIEW MENTAL HEALTH CENTER INC	WEST CENTRAL FAMILY MHS	SAN ANTONIO MENTAL HEALTH
KEDREN COMMUNITY MENTAL HEALTH CTR	HOLLYWOOD MENTAL HEALTH C	
LOS ANGELES CHILD GUIDANCE	NORTHEAST MENTAL HEALTH C	

**Agencies submitting outcomes that are not approved to provide CORS by PEI Administration:**

CHILD AND FAMILY GUIDANCE CENTER	L.A. COUNTY DMH
JEWISH FAMILY SERVICE OF LOSANGELES	ROYBAL SCHOOL BASED PROGR

Table 1. CORS Status Since Inception to March 16, 2015

# of Clients Claimed to Practice	# of Clients Entered into PEI OMA	# of Tx Cycles in PEI OMA	Clients with Multiple Tx Cycles	Clients Completing Tx	Clients Dropping-Out of Tx	Clients Still -In Tx
8182	26.50%	2227	2.49%	41.76%	27.08%	31.16%
n=	2168	n=	54	930	603	694

Note 1: Clients Claimed was based on CORS being selected as the EBP in a PEI Plan and having  $\geq 2$  core services claimed to the practice starting July 1, 2011.

Note 2: Number of clients Completing Tx or Dropping-Out of Tx was determined by whether the EBP was said to be completed (e.g. answered “yes” or “no”) in the PEI OMA.

Table 2. Client Demographics - Clients Who Entered CORS

Total Number of Clients	Age	Gender			Ethnicity					Primary Language		
	Average	Female	Male	Unknown	African-American	Asian / Pacific Islander	Caucasian	Hispanic / Latino	Other	English	Spanish	Other
2168	20	52.26%	47.65%	0.09%	29.80%	2.17%	6.64%	55.81%	5.58%	69.37%	28.04%	2.58%
n=		1133	1033	2	646	47	144	1210	121	1504	608	56

Note 1: Age is calculated at the date of the first EBP.

Note 2: Percentages may not total 100 due to missing data and/or rounding errors.

Table 3. Top 5 Most Frequently Reported DSM-IV Primary Axis Diagnosis - Clients Who Entered CORS

Total Treatment Cycles	Depressive Disorder NOS	Mood Disorder NOS	Attention-Deficit/Hyperactivity Disorder, Combined Type or Hyperactive Impulse Type	Adjustment Disorder With Anxiety and Depressed Mood	Disruptive Behavior Disorder NOS	Other
2227	15.31%	8.35%	7.00%	5.70%	5.70%	57.93%
n=	341	186	156	127	127	1290

\*See breakout of “Other” on the supplemental information page.

Table 4. Program Process Data - Clients Who Entered CORS			
Outcome Measures Administered	Pre-Test with Scores	Post-test with Scores	Clients Who Completed both a Pre and Post Measure with Scores
Youth Outcome Questionnaire - 2.01 (Parent) n= Ackn=	82.87%	61.01%	33.36%
	1195	521	481
	1442	854	1442
Youth Outcome Questionnaire – Self Report – 2.0 (YOQ-SR) n= Ackn=	80.98%	61.44%	29.21%
	596	239	215
	736	389	736
Outcome Questionnaire - 45.2 n= Ackn=	81.05%	50.63%	21.28%
	556	160	146
	686	316	686

Note 1: Number of acknowledged measures (Ackn=) is determined by the number of required measures that receive a score or an unable to collect reason code.

Note 2: The % indicated for Pre-test with scores, Post-test with scores, and both a Pre- and Post-test with scores is calculated by dividing the (n=#) by the number acknowledged (Ackn=#) in the PEI OMA system for each measure. The number acknowledged (Ackn=#) for those with Pre and Post scores is an estimate based on the greatest number of matches that could be expected given the number of Pre scores acknowledged.

Table 5a. Top Reasons Given for "Unable to Collect"

Youth Outcome Questionnaire - 2.01 (Parent)	Total Pre 247	Parent/care provider unavailable	Administration date exceeds acceptable range	Invalid outcome measure	Outcome measure unavailable	Parent/care provider refused	Other Reasons
	percent	36.84%	27.13%	10.93%	9.72%	6.07%	9.31%
	n	91	67	27	24	15	23
	Total Post 333	Parent/care provider unavailable	Administration date exceeds acceptable range	Premature termination	Outcome measure unavailable	Lost contact with parent/care provider	Other Reasons
	percent	41.14%	18.32%	15.62%	9.01%	6.61%	9.31%
	n	137	61	52	30	22	31

Table 5b. Top Reasons Given for "Unable to Collect"

Youth Outcome Questionnaire Self Report – 2.0 (YOQ-SR)	Total Pre 140	Administration date exceeds acceptable range	Client unavailable	Outcome measure unavailable	Invalid outcome measure	Client refused	Other Reasons
	percent	27.14%	20.00%	15.71%	13.57%	12.86%	10.71%
	n	38	28	22	19	18	15
	Total Post 150	Client unavailable	Premature termination	Administration date exceeds acceptable range	Lost contact with client	Outcome measure unavailable	Other Reasons
	percent	24.00%	20.67%	19.33%	14.67%	8.67%	12.67%
	n	36	31	29	22	13	19

Table 5c. Top Reasons Given for "Unable to Collect"

Outcome Questionnaire - 45.2	Total Pre 130	Outcome measure unavailable	Clinician not trained in outcome measure	Administration date exceeds acceptable range	Client refused	Client unavailable	Other Reasons
	percent	20.00%	18.46%	16.15%	13.85%	11.54%	20.00%
	n	26	24	21	18	15	26
	Total Post 156	Client unavailable	Lost contact with client	Administration date exceeds acceptable range	Client refused	Outcome measure unavailable	Other Reasons
	percent	27.56%	23.08%	10.90%	10.26%	8.97%	19.23%
	n	43	36	17	16	14	30

Table 6. Service Delivery Data – Clients Who Completed CORS

Total Treatment Cycles 930	Average Length of Treatment in Weeks	Range of Treatment Weeks		Average Number of Sessions	Range of Sessions	
	10	Min 0	Max 69	8	Min 1	Max 49

Note: Completed CORS is defined as having a 'yes' for completion indicated in the PEI OMA.

<b>Table 7. Outcome Data* – Clients who Completed CORS</b>					
		<b>Percent Improvement from Pre to Post</b>	<b>Percent of Clients Showing Reliable Change* from Pre-CORS to Post-CORS</b>		
			<b>Positive Change</b>	<b>No change</b>	<b>Negative Change</b>
<b>Youth Outcome Questionnaire (YOQ) - 2.01 (Parent)</b>	<b>TOTAL</b>	27.21% (n=462)	44.37%	44.37%	11.26%
			205	205	52
<b>Youth Outcome Questionnaire - Self Report - 2.0 (YOQ-SR)</b>	<b>TOTAL</b>	29.97% (n=205)	41.46%	48.78%	9.76%
			85	100	20
<b>Outcome Questionnaire - 45.2</b>	<b>TOTAL</b>	20.79% (n=135)	34.07%	59.26%	6.67%
			46	80	9

\*Please see Appendix A. for a description of the CORS outcome measures and the outcome indicators (percent improvement in average scores; and, percent of clients showing reliable change).

Note 2: Possible YOQ-Parent Total Scores can range from -16 to 240, with a clinical cutpoint of 46

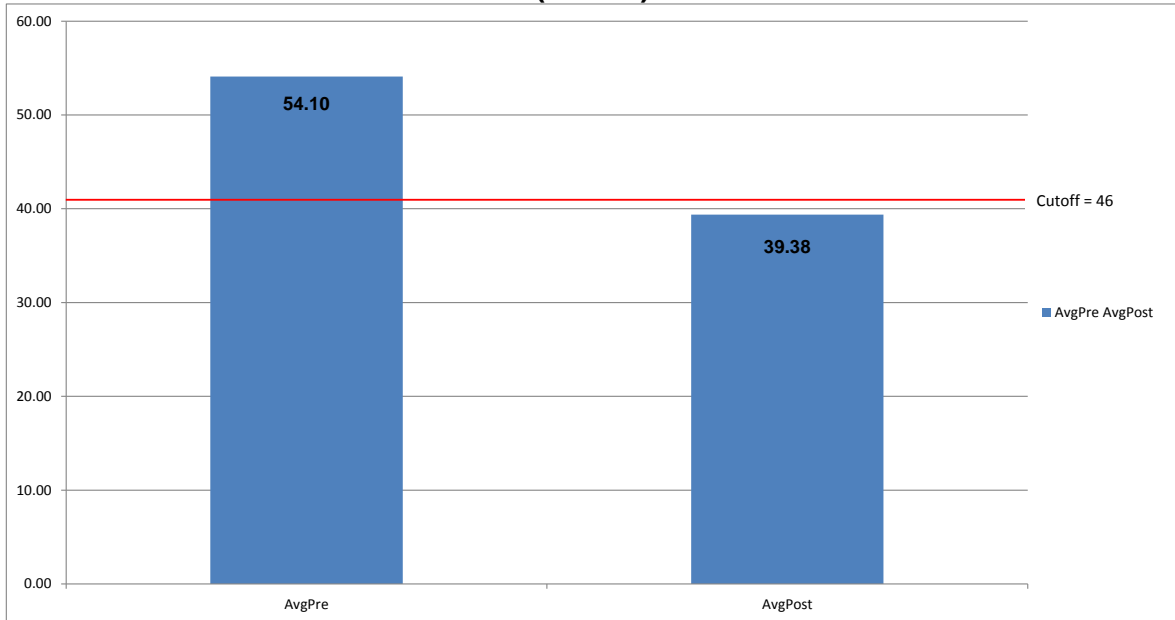
Note 3: Possible YOQ-SR Total Scores can range from -16 to 240, with a clinical cutpoint of 47.

Note 4: Possible OQ-45.2 Total Score can range from 0 to 180, with a clinical cutpoint of 64.

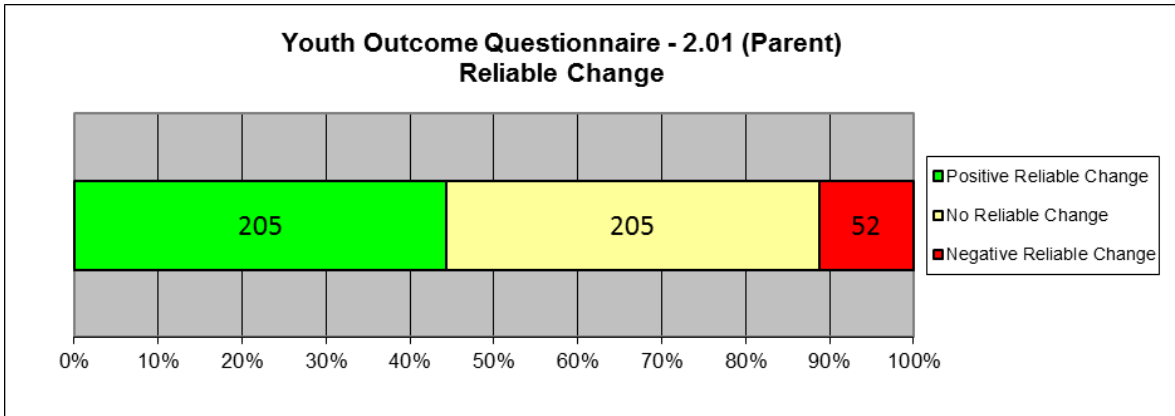
Note 5: Aggregate outcome data based on fewer than 20 clients are not reported.

Note 6: Positive Change indicates that the scores decreased from the pre to the post measures.

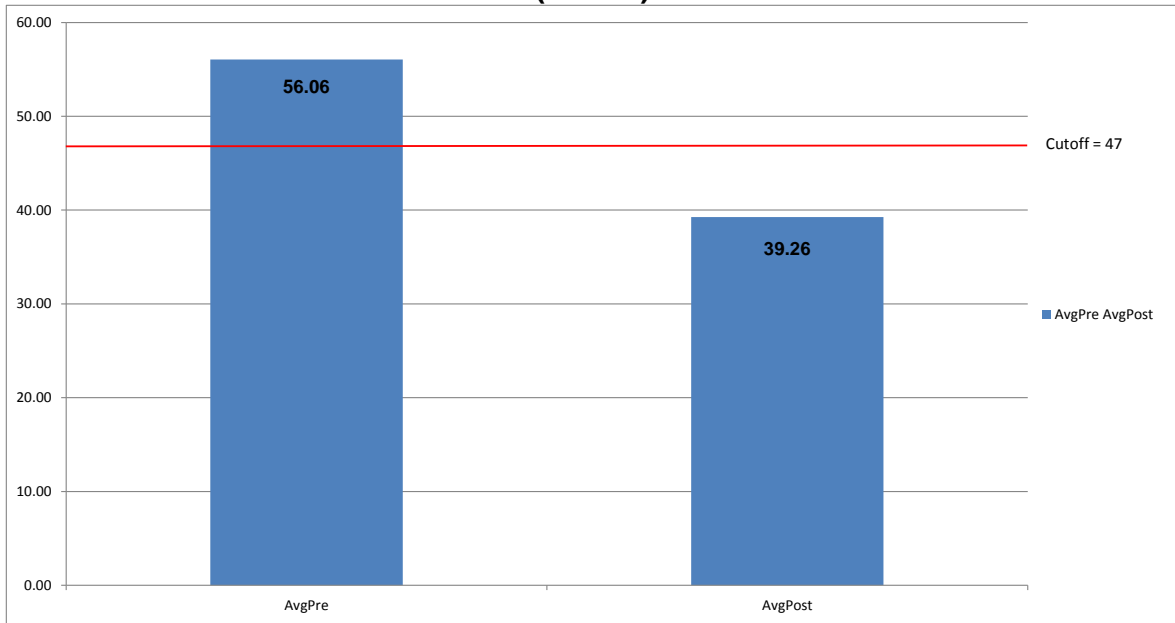
### Youth Outcome Questionnaire (YOQ) - 2.01 (Parent) (N=462)



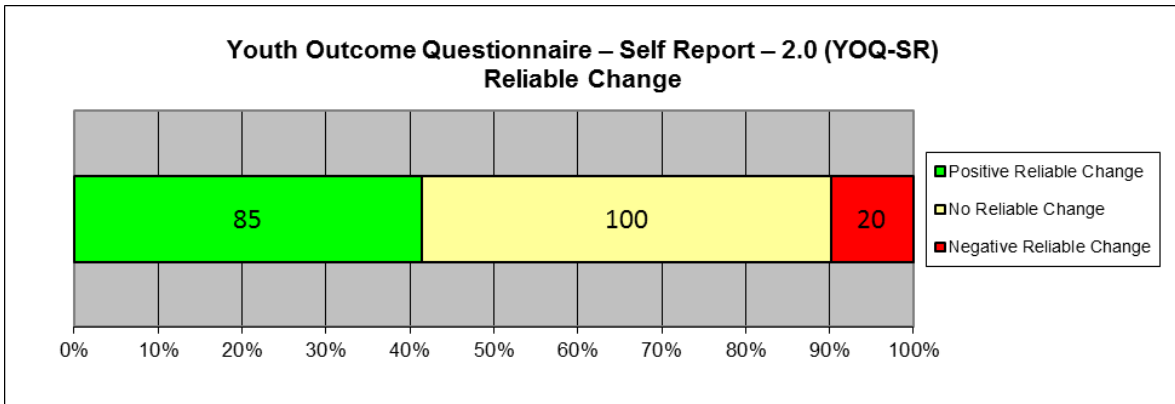
### Youth Outcome Questionnaire - 2.01 (Parent) Reliable Change



**Youth Outcome Questionnaire – Self Report – 2.0 (YOQ-SR)  
(N=205)**

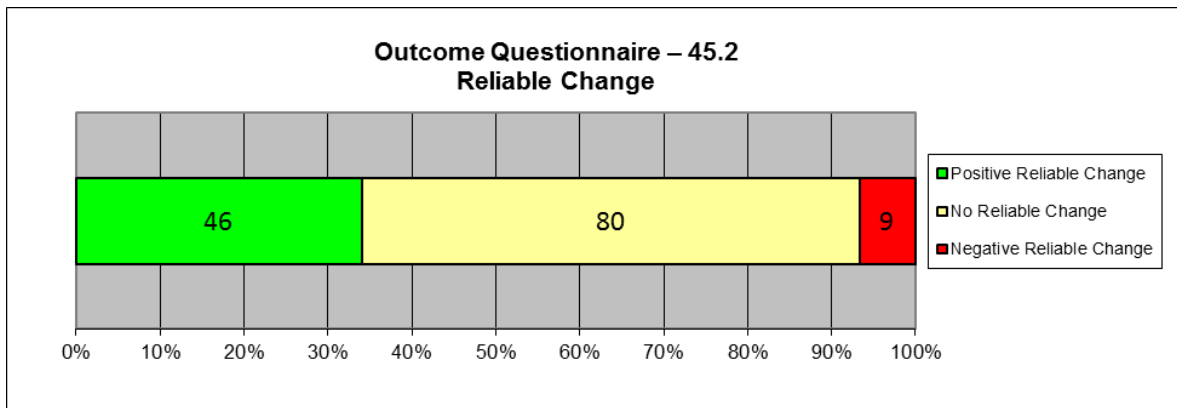
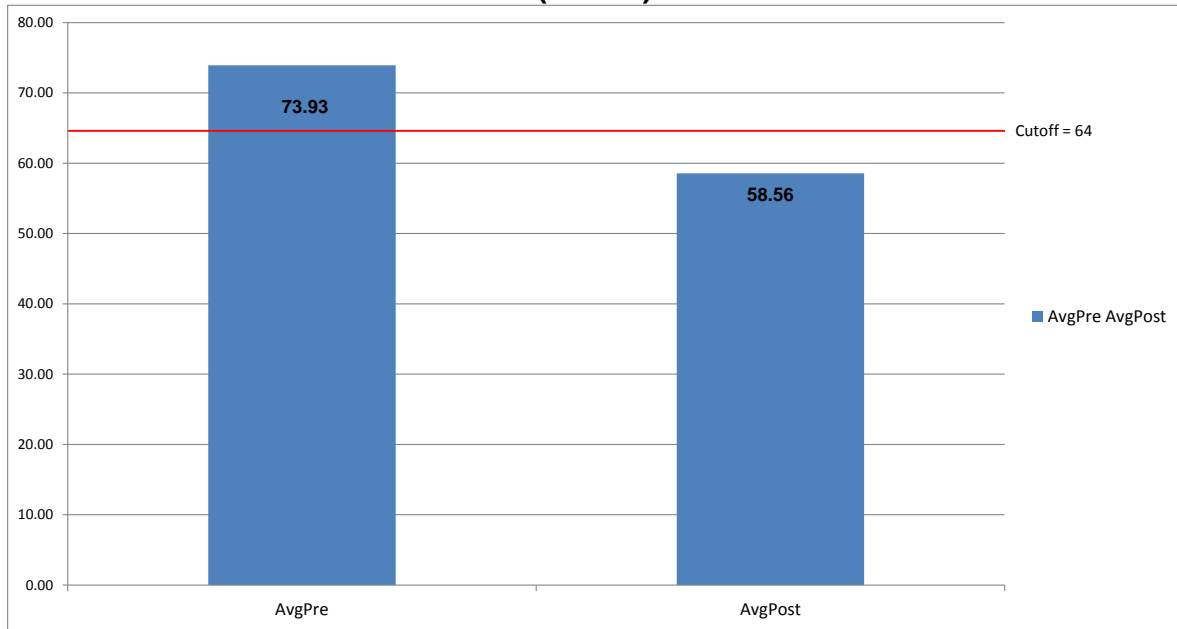


**Youth Outcome Questionnaire – Self Report – 2.0 (YOQ-SR)  
Reliable Change**





### Outcome Questionnaire – 45.2 (N=135)



## Appendix

### Youth Outcomes Questionnaires ( YOQ (Parent) and YOQ-SR)

The Youth Outcome Questionnaire is a 64-item parent-report that assesses global distress in a child's/adolescent's life from 4-17 years of age. The YOQ-SR is the Self-report version of the YOQ and is completed by the child/adolescent him or herself. Scores on both measures can range from -16 to 240. Scores of 46 or higher are most similar to a clinical population on the YOQ. A score of 47 is most similar to that of a clinical population on the YOQ-SR.

### Outcomes Questionnaires (OQ)

The Outcome Questionnaire is a 45-item self-report that assesses global distress in a client's life from ages 19 and older. Total Scores on this measure can range from 0 to 180, with scores of 64 or higher indicating clinical significance.

### Reliable Change Index

When comparing Pre and Post scores, it is very helpful to know whether the change reported represents the real effects of the treatment or errors in the system of measurement. The Reliability of Change Index (RCI) is a statistical way of helping to insure that the change recorded between pre and post assessments exceeds that which would be expected on the basis of measurement error alone. The RCI has been calculated using the Jacobson and Truax (1991) method and indicates when change exceeds that which would be expected on the basis of error at the  $p < .05$  probability level. For a more in-depth discussion of Reliability of Change see Jacobson, N. S., & Truax, P. (1991). Clinical Significance: A statistical approach to defining meaningful change in psychotherapy research. *Journal of Consulting and Clinical Psychology*, 59, 12-19. Also see Wise, E. A. (2004). Methods for analyzing psychotherapy outcomes: A review of clinical significance, reliable change, and recommendations for future directions. *Journal of Personality Assessment*, 82(1), 50-59.

The number and percent of clients experiencing positive change, no change and negative change are recorded in table 6. Healthful change in each of the measures cited here means that scores have decreased in value from pre to post test administrations (i.e. recorded a negative change on the RCI). To help avoid confusion, healthful reliable change is presented as positive while unhealthful reliable change is presented as negative change.

### Supplemental Information for Table 3 “Other” Diagnosis Category

DSM-IV Primary Axis Diagnosis - Clients Who Entered CORS	n	Percent
Anxiety Disorder NOS	116	5.21%
Adjustment Disorder With Depressed Mood	107	4.80%
Post-Traumatic Stress Disorder	93	4.18%
Adjustment Disorder Unspecified	70	3.14%
Oppositional Defiant Disorder	64	2.87%
Psychotic Disorder NOS	60	2.69%
Major Depressive Disorder, Recurrent, Moderate	59	2.65%
Adjustment Disorder W/Mixed Disturbance Emotion and Conduct	55	2.47%
Major Depressive Disorder, Rec., Severe W/O Psychotic Features	51	2.29%
Major Depressive Disorder, Rec., Severe With Psychotic Features	46	2.07%
Adjustment Disorder With Anxiety	45	2.02%
Generalized Anxiety Disorder	44	1.98%
Dysthymic Disorder	43	1.93%
Major Depressive Disorder, Single Episode, Unspecified	41	1.84%
Attention-Deficit/Hyperactivity Disorder, Predominantly Inattentive Type	33	1.48%
Attention-Deficit/Hyperactivity Disorder NOS	30	1.35%
Adjustment Disorder With Disturbance of Conduct	27	1.21%
Major Depressive Disorder, Single Episode, Mild	22	0.99%
Major Depressive Disorder, Single Episode, Moderate	20	0.90%
Disorder of Infancy, Childhood, or Adolescence NOS	19	0.85%
Bipolar Disorder NOS	18	0.81%
Major Depressive Disorder, Recurrent, Unspecified	17	0.76%
Acute Stress Disorder	17	0.76%
Schizoaffective Disorder	14	0.63%
Schizophrenia, Paranoid Type	13	0.58%
Major Depressive Disorder, Recurrent, Mild	13	0.58%
Panic Disorder Without Agoraphobia	12	0.54%
Major Depressive Disorder, SE, Severe W/O Psychotic Features	12	0.54%
Pervasive Developmental Disorder NOS/Asperger's Disorder/Rett's Disorder	11	0.49%
Conduct Disorder, Adolescent-Onset Type	11	0.49%
Separation Anxiety Disorder	8	0.36%
Diagnosis Deferred (code invalid as Secondary/Axis II Diagnosis)	8	0.36%
Panic Disorder With Agoraphobia	7	0.31%
Major Depressive Disorder, SE, Severe With Psychotic Features	7	0.31%
Impulse-Control Disorder NOS	7	0.31%
Obsessive-Compulsive Disorder	6	0.27%
Conduct Disorder, Childhood-Onset Type	6	0.27%
Bipolar II Disorder	5	0.22%
Mood Disorder Due to ...(Indicate Medical Condition)	5	0.22%
Brief Psychotic Disorder	3	0.13%
No Diagnosis (code invalid as Secondary/Axis III Diagnosis)	3	0.13%

<b>DSM-IV Primary Axis Diagnosis - Clients Who Entered CORS</b>	<b>n</b>	<b>Percent</b>
Social Phobia	3	0.13%
Bipolar I Disorder, Single Manic Episode, Unspecified	3	0.13%
Schizophrenia, Undifferentiated Type	2	0.09%
Cannabis Abuse	2	0.09%
Bipolar I Disorder, MRE, Depressed, Severe With Psychotic Features	2	0.09%
Bipolar I Disorder, MRE, Mixed, Severe With Psychotic Features	2	0.09%
Occupational Problem	1	0.04%
Bipolar I Disorder, Single Manic Episode, Moderate	1	0.04%
Bulemia Nervosa	1	0.04%
Encopresis W/Constipation and Overflow Incontinence	1	0.04%
Bipolar I Disorder, MRE, Manic, Severe With Psychotic Features	1	0.04%
Delusional Disorder	1	0.04%
Polysubstance Dependence	1	0.04%
Psychotic Disorder Due to ...(Indicate Medical Condition) with Delusions	1	0.04%
Parent-Child Relational Problem	1	0.04%
Identity Problem	1	0.04%
Bipolar I, SME, Severe W/O Psychotic Features	1	0.04%
Intermittent Explosive Disorder	1	0.04%
Major Depressive Disorder, Recurrent, In Full Remission	1	0.04%
Drug Induced Psychotic Disorder, With Hallucinations	1	0.04%
Bipolar I Disorder, MRE, Unspecified	1	0.04%
Bereavement	1	0.04%
Bipolar I Disorder, MRE, Mixed, Severe W/O Psychotic Features	1	0.04%
Major Depressive Disorder, Recurrent, In Partial Remission	1	0.04%
Autistic Disorder	1	0.04%
Drug Induced Psychotic Disorder, With Delusions	1	0.04%
Unspecified Mental Disorder (Nonpsychotic)	1	0.04%
Learning Disorder NOS	1	0.04%
Dissociative Amnesia	1	0.04%
Selective Mutism	1	0.04%
Drug Related Disorder NOS	1	0.04%
Specific Phobia	1	0.04%
Conversion Disorder	1	0.04%
Drug Induced Mood Disorder	1	0.04%
<b>TOTAL</b>	<b>1290</b>	<b>57.93%</b>

\*Percentage is not exact due to rounding errors.