

**COUNTY OF LOS ANGELES – DEPARTMENT OF MENTAL HEALTH  
PROGRAM SUPPORT BUREAU – MHSA IMPLEMENTATION AND OUTCOMES DIVISION**



WELLNESS • RECOVERY • RESILIENCE

**Prevention & Early Intervention: Crisis Oriented Recovery Services (CORS)**

**Countywide Aggregate Practice Outcomes Dashboard Report**

**Outcome Data Submission through November 21, 2014**

**Participating Legal Entities Include:**

ALCOTT CENTER FOR MHS	VIP COMMUNITY MHC INC
AMANECER COMMUNITY COUNSELING SERVICES	<b>L.A. COUNTY DMH</b>
CA HOSPITAL MEDICAL CENTER	AMERICAN INDIAN COUNSELING CENTER
CALIF INSTITUTE HEALTH SOCIAL SERVES	ANTELOPE VALLEY MHC
CENTER FOR INTEGRATED FAMILY HEALTH	ARCADIA MHS
CHILD AND FAMILY CENTER	AUGUSTUS F HAWKINS FAMILY MHS
DIDI HIRSCH PSYCHIATRIC SERVICE	COASTAL API FAMILY MHC
DREW CHILD DEVELOPMENT CORPORATION	COMPTON FAMILY MHS
EL CENTRO DE AMISTAD INC	DOWNTOWN MHC
ENKI HEALTH AND RESEARCH SYSTEMS	HARBOR-UCLA MEDICAL CENTER
HERITAGE CLINIC	HOLLYWOOD MHC
HILLVIEW MHC INC	LONG BEACH MHS ADULT CLINIC
KEDREN COMMUNITY MHC	NORTHEAST MHC
PENNY LANE CENTERS	RIO HONDO COMMUNITY MHC
PERSONAL INVOLVEMENT CENTER INC	ROYBAL FAMILY MHS
SAINT JOHNS HEALTH CENTER	SAN ANTONIO MHC
SAN FERNANDO VALLEY COMMUNITY MHC	SAN PEDRO MHS
SPECIAL SERVICE FOR GROUPS	SOUTH BAY MHS
ST JOSEPH CENTER	WEST CENTRAL FAMILY MHS
STAR VIEW ADOLESCENT CENTER INC	

**Agencies submitting outcomes that are not approved to provide CORS by PEI Administration:**

CHILD AND FAMILY GUIDANCE CENTER

JEWISH FAMILY SERVICES OF LA

Table 1. CORS Status Since Inception to November 21, 2014

# of Clients Claimed to Practice	# of Clients Entered into PEI OMA	# of Tx Cycles in PEI OMA	Clients with Multiple Tx Cycles	Clients Completing Tx	Clients Dropping-Out of Tx	Clients Still -In Tx
7980	22.22%	1829	2.88%	43.63%	23.07%	33.30%
n=	1773	n=	51	798	422	609

Note 1: Clients Claimed was based on CORS being selected as the EBP in a PEI Plan and having  $\geq 2$  core services claimed to the practice starting July 1, 2011.

Note 2: Number of clients Completing Tx or Dropping-Out of Tx was determined by whether the EBP was said to be completed (e.g. answered “yes” or “no”) in the PEI OMA.

Table 2. Client Demographics - Clients Who Entered CORS

Total Number of Clients	Age	Gender			Ethnicity					Primary Language		
	Average	Female	Male	Unknown	African-American	Asian / Pacific Islander	Caucasian	Hispanic / Latino	Other	English	Spanish	Other
1773	20	52.34%	47.55%	0.11%	28.14%	2.54%	7.39%	55.89%	6.03%	68.42%	28.88%	2.71%
n=		928	843	2	499	45	131	991	107	1213	512	48

Note 1: Age is calculated at the date of the first EBP.

Note 2: Percentages may not total 100 due to missing data and/or rounding errors.

Table 3. Top 5 Most Frequently Reported DSM-IV Primary Axis Diagnosis - Clients Who Entered CORS

Total Treatment Cycles	Depressive Disorder NOS	Mood Disorder NOS	Attention-Deficit/Hyperactivity Disorder, Combined Type or Hyperactive Impulse Type	Adjustment Disorder With Anxiety and Depressed Mood	Disruptive Behavior Disorder NOS	Other
1829	14.43%	7.65%	7.33%	6.29%	5.85%	58.45%
n=	264	140	134	115	107	1069

\*See breakout of “Other” on the supplemental information page.

Table 4. Program Process Data - Clients Who Entered CORS			
Outcome Measures Administered	Pre-Test with Scores	Post-test with Scores	Clients Who Completed both a Pre and Post Measure with Scores
Youth Outcome Questionnaire - 2.01 (Parent)	81.76%	57.91%	33.45%
	n= 946	421	387
	Ackn= 1157	727	1157
Youth Outcome Questionnaire – Self Report – 2.0 (YOQ-SR)	81.29%	57.59%	29.68%
	n= 452	182	165
	Ackn= 556	316	556
Outcome Questionnaire - 45.2	78.73%	48.45%	21.96%
	n= 459	141	128
	Ackn= 583	291	583

Note 1: Number of acknowledged measures (Ackn=) is determined by the number of required measures that receive a score or an unable to collect reason code.

Note 2: The % indicated for Pre-test with scores, Post-test with scores, and both a Pre- and Post-test with scores is calculated by dividing the (n=#) by the number acknowledged (Ackn=#) in the PEI OMA system for each measure. The number acknowledged (Ackn=#) for those with Pre and Post scores is an estimate based on the greatest number of matches that could be expected given the number of Pre scores acknowledged.

Table 5a. Top Reasons Given for "Unable to Collect"							
Youth Outcome Questionnaire - 2.01 (Parent)	Total Pre 211	Parent/care provider unavailable	Administration date exceeds acceptable range	Outcome measure unavailable	Invalid outcome measure	Parent/care provider refused	Other Reasons
	percent	37.44%	28.44%	10.90%	8.06%	6.64%	8.53%
	n	79	60	23	17	14	18
	Total Post 306	Parent/care provider unavailable	Administration date exceeds acceptable range	Premature termination	Outcome measure unavailable	Lost contact with parent/care provider	Other Reasons
	percent	42.81%	17.32%	15.36%	9.80%	7.19%	7.52%
	n	131	53	47	30	22	23

Table 5b. Top Reasons Given for "Unable to Collect"							
Youth Outcome Questionnaire Self Report – 2.0 (YOQ-SR)	Total Pre 104	Administration date exceeds acceptable range	Client unavailable	Client refused	Outcome measure unavailable	Administered wrong forms	Other Reasons
	percent	33.65%	25.00%	15.38%	13.46%	4.81%	7.69%
	n	35	26	16	14	5	8
	Total Post 134	Client unavailable	Administration date exceeds acceptable range	Premature termination	Lost contact with client	Outcome measure unavailable	Other Reasons
	percent	26.12%	20.15%	18.66%	15.67%	9.70%	9.70%
	n	35	27	25	21	13	13

Outcome Questionnaire - 45.2	Total Pre 124	Outcome measure unavailable	Clinician not trained in outcome measure	Administration date exceeds acceptable range	Client refused	Client unavailable	Other Reasons
	percent	20.16%	18.55%	15.32%	14.52%	11.29%	20.16%
	n	25	23	19	18	14	25
	Total Post 150	Client unavailable	Lost contact with client	Client refused	Administration date exceeds acceptable range	Outcome measure unavailable	Other Reasons
	percent	28.67%	22.00%	11.33%	10.00%	9.33%	18.67%
	n	43	33	17	15	14	28

Total Treatment Cycles 798	Average Length of Treatment in Weeks	Range of Treatment Weeks		Average Number of Sessions	Range of Sessions	
	10	Min 0	Max 69	8	Min 1	Max 49

Note: Completed CORS is defined as having a 'yes' for completion indicated in the PEI OMA.

<b>Table 7. Outcome Data<sup>±</sup> – Clients who Completed CORS</b>					
		<b>Percent Improvement from Pre to Post</b>	<b>Percent of Clients Showing Reliable Change* from Pre-CORS to Post-CORS</b>		
			<b>Positive Change</b>	<b>No change</b>	<b>Negative Change</b>
<b>Youth Outcome Questionnaire (YOQ) - 2.01 (Parent)</b>	<b>TOTAL</b>	29.83% (n=369)	43.36%	49.59%	7.05%
			160	183	26
<b>Youth Outcome Questionnaire - Self Report - 2.0 (YOQ-SR)</b>	<b>TOTAL</b>	32.05% (n=156)	42.31%	48.72%	8.97%
			66	76	14
<b>Outcome Questionnaire - 45.2</b>	<b>TOTAL</b>	21.39% (n=119)	34.45%	59.66%	5.88%
			41	71	7

<sup>±</sup>Please see Appendix A. for a description of the CORS outcome measures and the outcome indicators (percent improvement in average scores; and, percent of clients showing reliable change).

Note 2: Possible YOQ-Parent Total Scores can range from -16 to 240, with a clinical cutpoint of 46

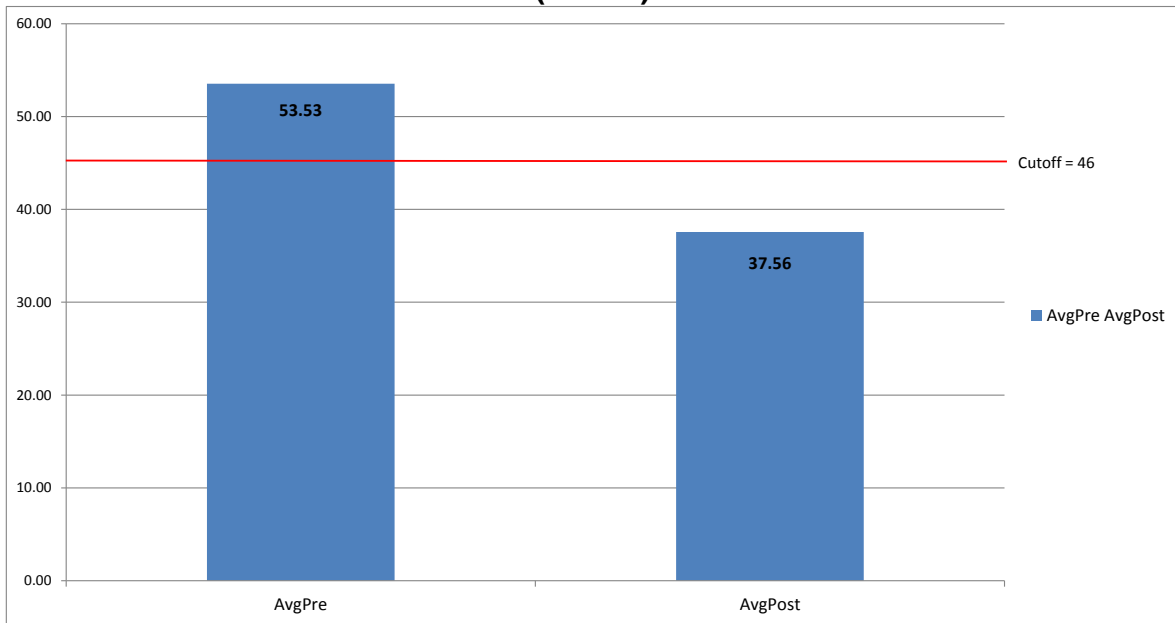
Note 3: Possible YOQ-SR Total Scores can range from -16 to 240, with a clinical cutpoint of 47.

Note 4: Possible OQ-45.2 Total Score can range from 0 to 180, with a clinical cutpoint of 64.

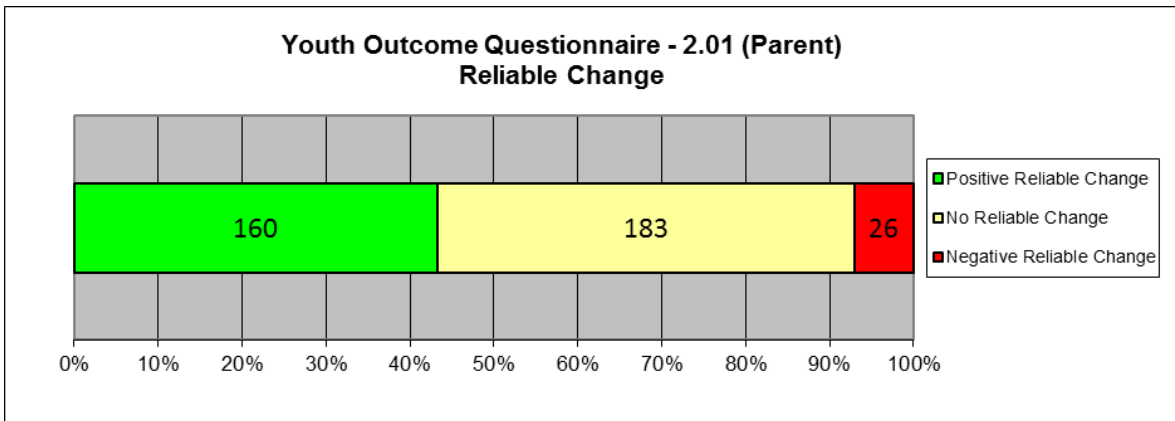
Note 5: Aggregate outcome data based on fewer than 20 clients are not reported.

Note 6: Positive Change indicates that the scores decreased from the pre to the post measures.

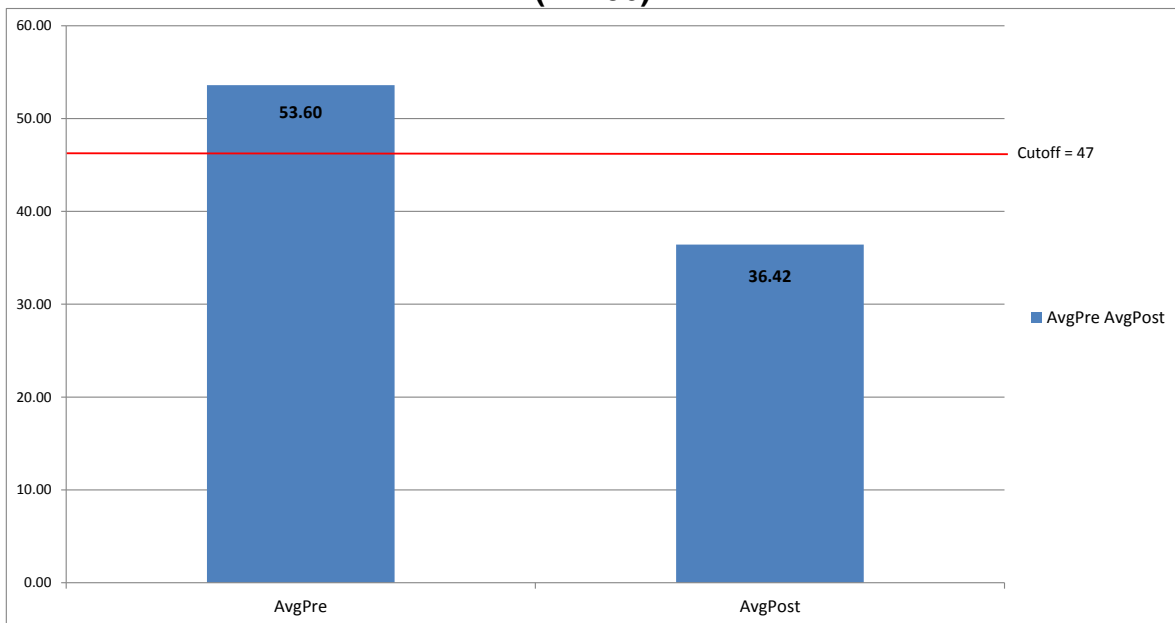
**Youth Outcome Questionnaire (YOQ) - 2.01 (Parent)**  
**(N=369)**



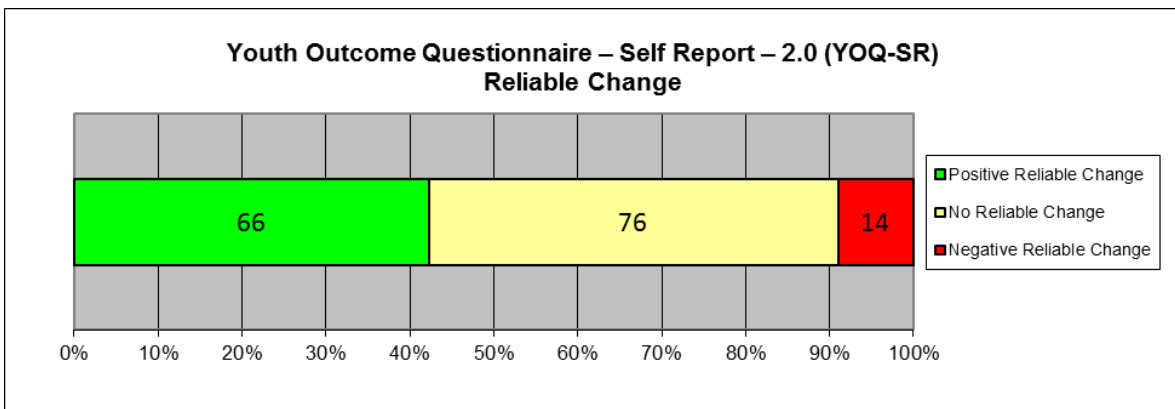
**Youth Outcome Questionnaire - 2.01 (Parent)**  
**Reliable Change**



**Youth Outcome Questionnaire – Self Report – 2.0 (YOQ-SR)  
(N=156)**

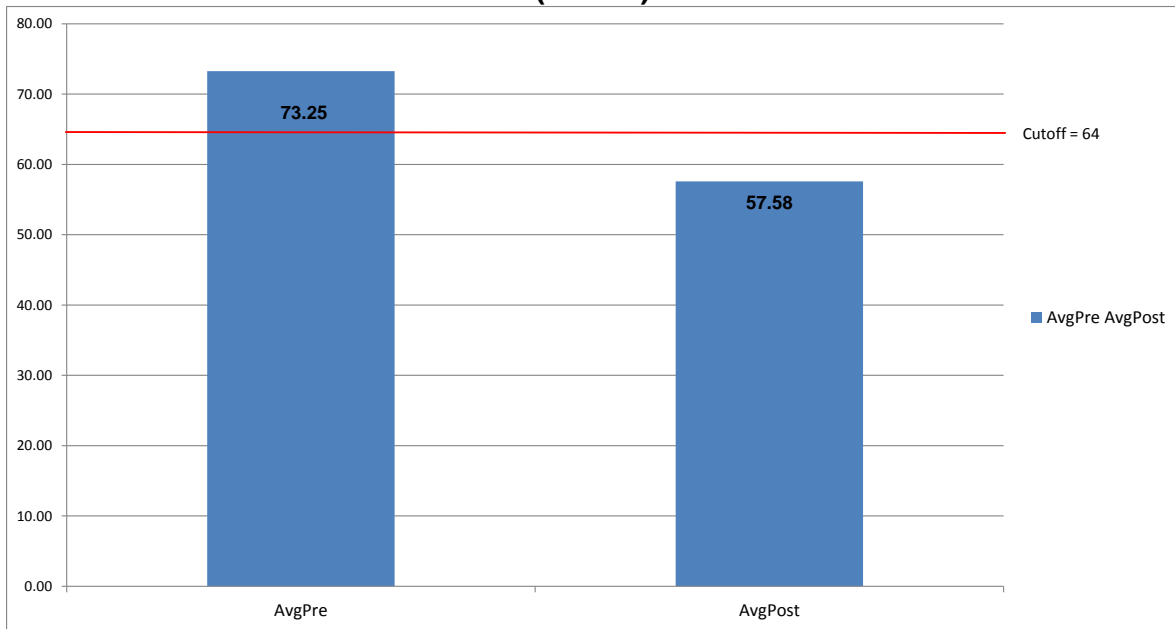


**Youth Outcome Questionnaire – Self Report – 2.0 (YOQ-SR)  
Reliable Change**

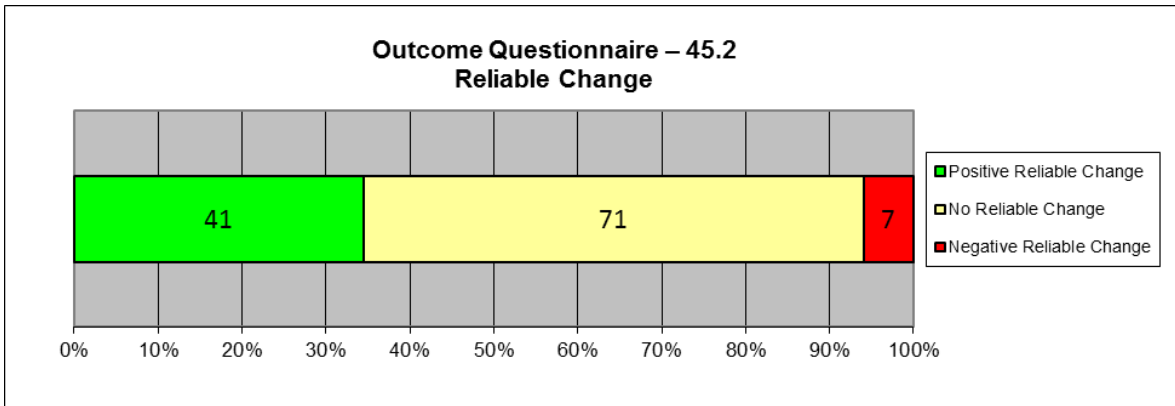




### Outcome Questionnaire – 45.2 (N=119)



### Outcome Questionnaire – 45.2 Reliable Change



## Appendix

### Youth Outcomes Questionnaires ( YOQ (Parent) and YOQ-SR)

The Youth Outcome Questionnaire is a 64-item parent-report that assesses global distress in a child's/adolescent's life from 4-17 years of age. The YOQ-SR is the Self-report version of the YOQ and is completed by the child/adolescent him or herself. Scores on both measures can range from -16 to 240. Scores of 46 or higher are most similar to a clinical population on the YOQ. A score of 47 is most similar to that of a clinical population on the YOQ-SR.

### Outcomes Questionnaires (OQ)

The Outcome Questionnaire is a 45-item self-report that assesses global distress in a client's life from ages 19 and older. Total Scores on this measure can range from 0 to 180, with scores of 64 or higher indicating clinical significance.

### Reliable Change Index

When comparing Pre and Post scores, it is very helpful to know whether the change reported represents the real effects of the treatment or errors in the system of measurement. The Reliability of Change Index (RCI) is a statistical way of helping to insure that the change recorded between pre and post assessments exceeds that which would be expected on the basis of measurement error alone. The RCI has been calculated using the Jacobson and Truax (1991) method and indicates when change exceeds that which would be expected on the basis of error at the  $p < .05$  probability level. For a more in-depth discussion of Reliability of Change see Jacobson, N. S., & Truax, P. (1991). Clinical Significance: A statistical approach to defining meaningful change in psychotherapy research. *Journal of Consulting and Clinical Psychology*, 59, 12-19. Also see Wise, E. A. (2004). Methods for analyzing psychotherapy outcomes: A review of clinical significance, reliable change, and recommendations for future directions. *Journal of Personality Assessment*, 82(1), 50-59.

The number and percent of clients experiencing positive change, no change and negative change are recorded in table 6. Healthful change in each of the measures cited here means that scores have decreased in value from pre to post test administrations (i.e. recorded a negative change on the RCI). To help avoid confusion, healthful reliable change is presented as positive while unhealthful reliable change is presented as negative change.

### Supplemental Information for Table 3 “Other” Diagnosis Category

DSM-IV Primary Axis Diagnosis - Clients Who Entered CORS	n	Percent
Adjustment Disorder With Depressed Mood	92	5.03%
Anxiety Disorder NOS	82	4.48%
Post-Traumatic Stress Disorder	78	4.26%
Adjustment Disorder Unspecified	58	3.17%
Oppositional Defiant Disorder	55	3.01%
Major Depressive Disorder, Recurrent, Moderate	54	2.95%
Major Depressive Disorder, Rec., Severe W/O Psychotic Features	46	2.52%
Adjustment Disorder W/Mixed Disturbance Emotion and Conduct	46	2.52%
Adjustment Disorder With Anxiety	41	2.24%
Dysthymic Disorder	38	2.08%
Psychotic Disorder NOS	37	2.02%
Generalized Anxiety Disorder	37	2.02%
Major Depressive Disorder, Single Episode, Unspecified	37	2.02%
Major Depressive Disorder, Rec., Severe With Psychotic Features	35	1.91%
Adjustment Disorder With Disturbance of Conduct	26	1.42%
Attention-Deficit/Hyperactivity Disorder, Predominantly Inattentive Type	24	1.31%
Attention-Deficit/Hyperactivity Disorder NOS	21	1.15%
Major Depressive Disorder, Single Episode, Mild	20	1.09%
Major Depressive Disorder, Single Episode, Moderate	18	0.98%
Acute Stress Disorder	16	0.87%
Bipolar Disorder NOS	14	0.77%
Major Depressive Disorder, Recurrent, Mild	14	0.77%
Major Depressive Disorder, Recurrent, Unspecified	13	0.71%
Schizoaffective Disorder	13	0.71%
Disorder of Infancy, Childhood, or Adolescence NOS	12	0.66%
Major Depressive Disorder, SE, Severe W/O Psychotic Features	12	0.66%
Panic Disorder Without Agoraphobia	11	0.60%
Schizophrenia, Paranoid Type	10	0.55%
Conduct Disorder, Adolescent-Onset Type	10	0.55%
Pervasive Developmental Disorder NOS/Asperger's Disorder/Rett's Disorder	8	0.44%
Diagnosis Deferred (code invalid as Secondary/Axis II Diagnosis)	7	0.38%
Panic Disorder With Agoraphobia	6	0.33%
Major Depressive Disorder, SE, Severe With Psychotic Features	6	0.33%
Conduct Disorder, Childhood-Onset Type	5	0.27%
Obsessive-Compulsive Disorder	5	0.27%
Mood Disorder Due to ... (Indicate Medical Condition)	5	0.27%
Separation Anxiety Disorder	5	0.27%
Bipolar II Disorder	5	0.27%
No Diagnosis (code invalid as Secondary/Axis III Diagnosis)	3	0.16%
Bipolar I Disorder, Single Manic Episode, Unspecified	3	0.16%
Social Phobia	3	0.16%

<b>DSM-IV Primary Axis Diagnosis - Clients Who Entered CORS</b>	<b>n</b>	<b>Percent</b>
Impulse-Control Disorder NOS	3	0.16%
Bipolar I Disorder, MRE, Depressed, Severe With Psychotic Features	2	0.11%
Bipolar I Disorder, MRE, Mixed, Severe With Psychotic Features	2	0.11%
Brief Psychotic Disorder	2	0.11%
Schizophrenia, Undifferentiated Type	2	0.11%
Drug Induced Psychotic Disorder, With Hallucinations	1	0.05%
Unspecified Mental Disorder (Nonpsychotic)	1	0.05%
Cannabis Abuse	1	0.05%
Selective Mutism	1	0.05%
Identity Problem	1	0.05%
Drug Related Disorder NOS	1	0.05%
Parent-Child Relational Problem	1	0.05%
Bereavement	1	0.05%
Drug Induced Psychotic Disorder, With Delusions	1	0.05%
Drug Induced Mood Disorder	1	0.05%
Delusional Disorder	1	0.05%
Bipolar I Disorder, MRE, Unspecified	1	0.05%
Bulemia Nervosa	1	0.05%
Autistic Disorder	1	0.05%
Dissociative Amnesia	1	0.05%
Major Depressive Disorder, Recurrent, In Partial Remission	1	0.05%
Bipolar I, SME, Severe W/O Psychotic Features	1	0.05%
Bipolar I Disorder, MRE, Manic, Severe With Psychotic Features	1	0.05%
Specific Phobia	1	0.05%
Bipolar I Disorder, Single Manic Episode, Moderate	1	0.05%
Major Depressive Disorder, Recurrent, In Full Remission	1	0.05%
Polysubstance Dependence	1	0.05%
Learning Disorder NOS	1	0.05%
Occupational Problem	1	0.05%
Psychotic Disorder Due to ...(Indicate Medical Condition) with Delusions	1	0.05%
Encopresis W/Constipation and Overflow Incontinence	1	0.05%
Intermittent Explosive Disorder	1	0.05%
<b>TOTAL</b>	<b>1069</b>	<b>58.45%</b>

\*Percentage is not exact due to rounding errors.