

**COUNTY OF LOS ANGELES – DEPARTMENT OF MENTAL HEALTH
PROGRAM SUPPORT BUREAU – MHSA IMPLEMENTATION AND OUTCOMES DIVISION**



WELLNESS • RECOVERY • RESILIENCE

Prevention & Early Intervention: Crisis Oriented Recovery Services (CORS)

Countywide Aggregate Practice Outcomes Dashboard Report

Outcome Data Submission through September 17, 2013

Participating Legal Entities Include:

Alcott Center For MHS	San Fernando Valley Community MHC	Downtown MHC
Amanecer Community Counseling Services	Special Service For Groups	Harbor-UCLA Medical
California Institute Health Social Services	St Johns Hospital Child Study Center	Hollywood MHC
Center for Integrated Family Health	St. Joseph Center	Long Beach MHS Adult Clinic
Child and Family Center	LA County Dept of Mental Health:	Northeast MHC
Didi Hirsch Psychiatric Services	American Indian Counseling Center	Roybal Family MHS
Drew Child Development Corporation	Antelope Valley MHC	San Antonio MHC
Enki Health and Research Systems	Arcadia MHS	San Pedro MHC
Heritage Clinic	Augustus F Hawkins Family MHS	South Bay MHS
Jewish Family Service of Los Angeles	Coastal API Family MHC	
Personal Involvement Center Inc.	Compton Family MHS	

Agencies submitting outcomes that are not approved to provide CORS by PEI Administration:

Child and Family Guidance Center
Hillview MHC Inc.

Table 1. CORS Status Since Inception to September 17, 2013

# of Clients Claimed to Practice	# of Clients Entered into PEI OMA	# of Tx Cycles in PEI OMA	Clients with Multiple Tx Cycles	Clients Completing Tx	Clients Dropping-Out of Tx
9796	6.16%	605	0.33%	40.83%	25.45%
n=	603	n=	2	247	154

Note 1: Clients Claimed was based on CORS being selected as the EBP in a PEI Plan and having ≥ 1 core services claimed to the practice starting July 1, 2011.

Note 2: Number of clients Completing Tx or Dropping-Out of Tx was determined by whether the EBP was said to be completed (e.g. answered “yes” or “no”) in the PEI OMA.

Table 2. Client Demographics - Clients Who Entered CORS

Total Number of Clients	Age	Gender			Ethnicity					Primary Language		
	Average	Female	Male	Unknown	African-American	Asian / Pacific Islander	Caucasian	Hispanic / Latino	Other	English	Spanish	Other
603	29	59.37%	40.30%	0.33%	18.24%	4.81%	13.43%	53.40%	10.12%	72.31%	23.22%	4.48%
n=		358	243	2	110	29	81	322	61	436	140	27

Note 1: Age is calculated at the date of the first EBP.

Note 2: Percentages may not total 100 due to missing data and/or rounding errors.

Table 3: Top 5 Most Frequently Reported DSM-IV Primary Axis Diagnosis - Clients Who Entered CORS

Total Treatment Cycles	Depressive Disorder NOS	Adjustment Disorder With Depressed Mood	Adjustment Disorder With Anxiety and Depressed Mood	Mood Disorder NOS	Major Depressive Disorder, Rec., Severe W/O Psychotic Features	Other
605	11.07%	8.10%	6.94%	6.12%	5.29%	62.48%
n=	67	49	42	37	32	378

*See breakout of “Other” on the supplemental information page.

Table 4: Program Process Data - Clients Who Entered CORS			
Outcome Measures Administered	Pre-Test with Scores	Post-test with Scores	Clients Who Completed both a Pre and Post Measure with Scores
Youth Outcome Questionnaire - 2.01 (Parent) n= Ackn=	77.56%	62.67%	38.05%
	159	94	78
	205	150	205
Youth Outcome Questionnaire – Self Report – 2.0 (YOQ-SR) n= Ackn=	84.00%	60.29%	37.00%
	84	41	37
	100	68	100
Outcome Questionnaire - 45.2 n= Ackn=	71.59%	50.90%	21.31%
	252	85	75
	352	167	352

Note 1: Number of acknowledged measures (Ackn=) is determined by the number of required measures that receive a score or an unable to collect reason code.

Note 2: The % indicated for Pre-test with scores, Post-test with scores, and both a Pre- and Post-test with scores is calculated by dividing the (n=#) by the number acknowledged (Ackn=#) in the PEI OMA system for each measure. The number acknowledged (Ackn=#) for those with Pre and Post scores is an estimate based on the greatest number of matches that could be expected given the number of Pre scores acknowledged.

Table 5a. Top Reasons Given for "Unable to Collect"

Youth Outcome Questionnaire - 2.01 (Parent)	Total Pre 46		Parent/care provider unavailable	Outcome measure unavailable	Administration date exceeds acceptable range	Administered wrong forms	Parent/care provider refused	Other Reasons
		percent	36.96%	32.61%	10.87%	6.52%	6.52%	6.52%
		n	17	15	5	3	3	3
	Total Post 56		Parent/care provider unavailable	Premature termination	Lost contact with parent/care provider	Outcome measure unavailable	Administration date exceeds acceptable range	Other Reasons
		percent	55.36%	17.86%	10.71%	5.36%	5.36%	5.36%
		n	31	10	6	3	3	3

Table 5b. Top Reasons Given for "Unable to Collect"

Youth Outcome Questionnaire Self Report – 2.0 (YOQ-SR)	Total Pre 16		Outcome measure unavailable	Client unavailable	Administered wrong forms	Administration date exceeds acceptable range		
		percent	37.50%	31.25%	25.00%	6.25%		
		n	6	5	4	1		
	Total Post 27		Client unavailable	Premature termination	Administration date exceeds acceptable range	Lost contact with client	Administered wrong forms	Other Reasons
		percent	51.85%	11.11%	11.11%	7.41%	3.70%	14.81%
		n	14	3	3	2	1	4

Table 5c. Top Reasons Given for "Unable to Collect"

Outcome Questionnaire - 45.2	Total Pre 100		Outcome measure unavailable	Clinician not trained in outcome measure	Client unavailable	Administration date exceeds acceptable range	Client refused	Other Reasons
		percent	24.00%	20.00%	13.00%	13.00%	12.00%	18.00%
		n	24	20	13	13	12	18
	Total Post 82		Client unavailable	Lost contact with client	Outcome measure unavailable	Administration date exceeds acceptable range	Not available in primary language	Other Reasons
		percent	28.05%	25.61%	12.20%	10.98%	8.54%	14.63%
		n	23	21	10	9	7	12

Table 6. Service Delivery Data – Clients Who Completed CORS

Total Treatment Cycles 247	Average Length of Treatment in Weeks	Range of Treatment Weeks		Average Number of Sessions	Range of Sessions	
	10	Min 0	Max 57	7	Min 1	Max 30

Note: Completed CORS is defined as having a 'yes' for completion indicated in the PEI OMA.

Table 7a. Outcome Data* – Clients who Completed CORS					
		Percent Improvement from Pre to Post	Percent of Clients Showing Reliable Change* from Pre-CORS to Post-CORS		
			Positive Change	No change	Negative Change
Youth Outcome Questionnaire (YOQ) - 2.01 (Parent)	TOTAL	32.87% (n=77)	45.45%	48.05%	6.49%
			35	37	5
Youth Outcome Questionnaire - Self Report - 2.0 (YOQ-SR)	TOTAL	21.89% (n=36)	33.33%	58.33%	8.33%
			12	21	3
Outcome Questionnaire - 45.2	TOTAL	21.23% (n=72)	31.94%	61.11%	6.94%
			23	44	5

*Please see Appendix A. for a description of the CORS outcome measures and the outcome indicators (percent improvement in average scores; and, percent of clients showing reliable change).

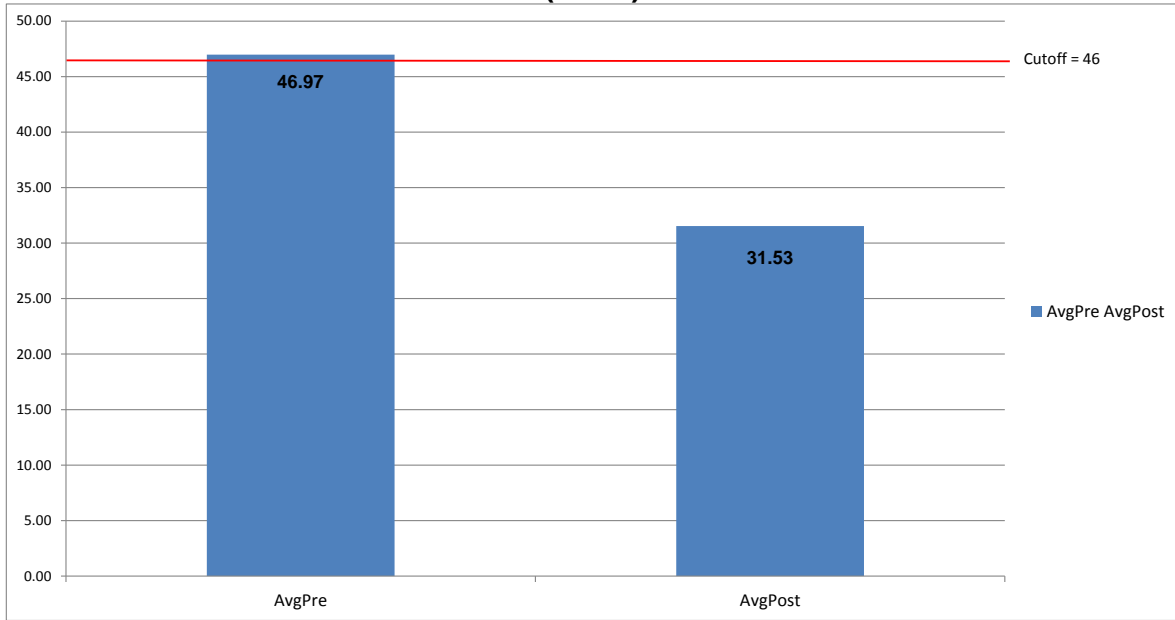
Note 2: Possible YOQ-Parent Total Scores can range from -16 -240, with a clinical cutpoint of 46

Note 3: Possible YOQ-SR Total Scores can range from -16-240, with a clinical cutpoint of 47.

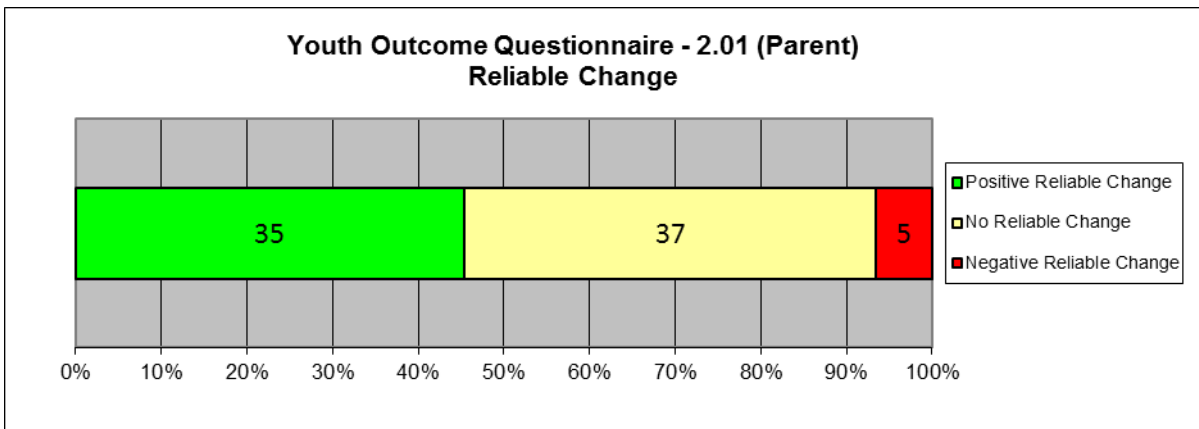
Note 4: Aggregate outcome data based on fewer than 20 clients are not reported.

Note 5: Positive Change indicates that the scores decreased from the pre to the post measures.

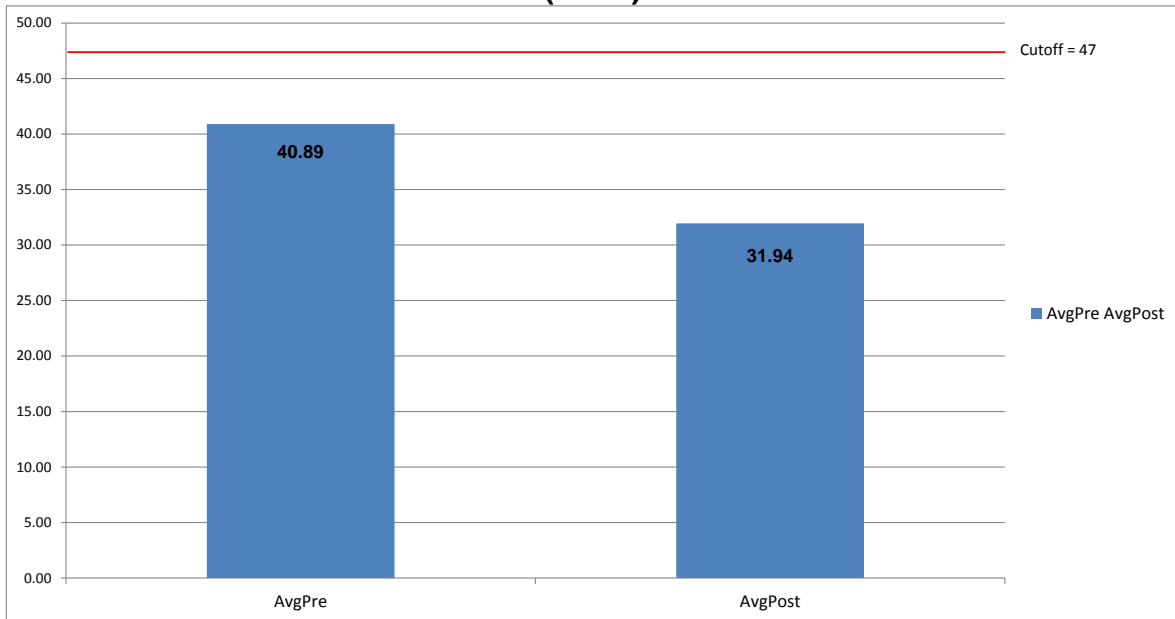
Youth Outcome Questionnaire (YOQ) - 2.01 (Parent) (N=77)



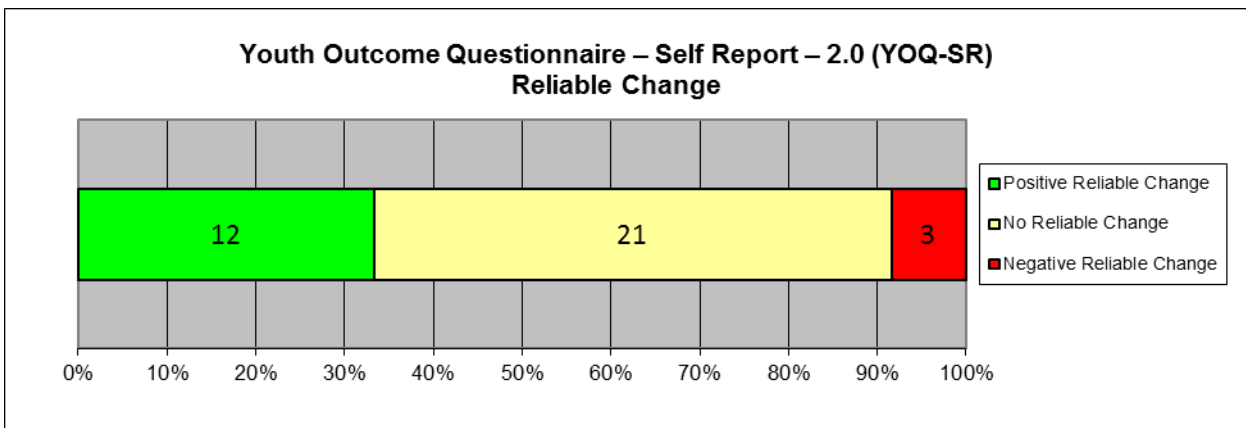
Youth Outcome Questionnaire - 2.01 (Parent) Reliable Change



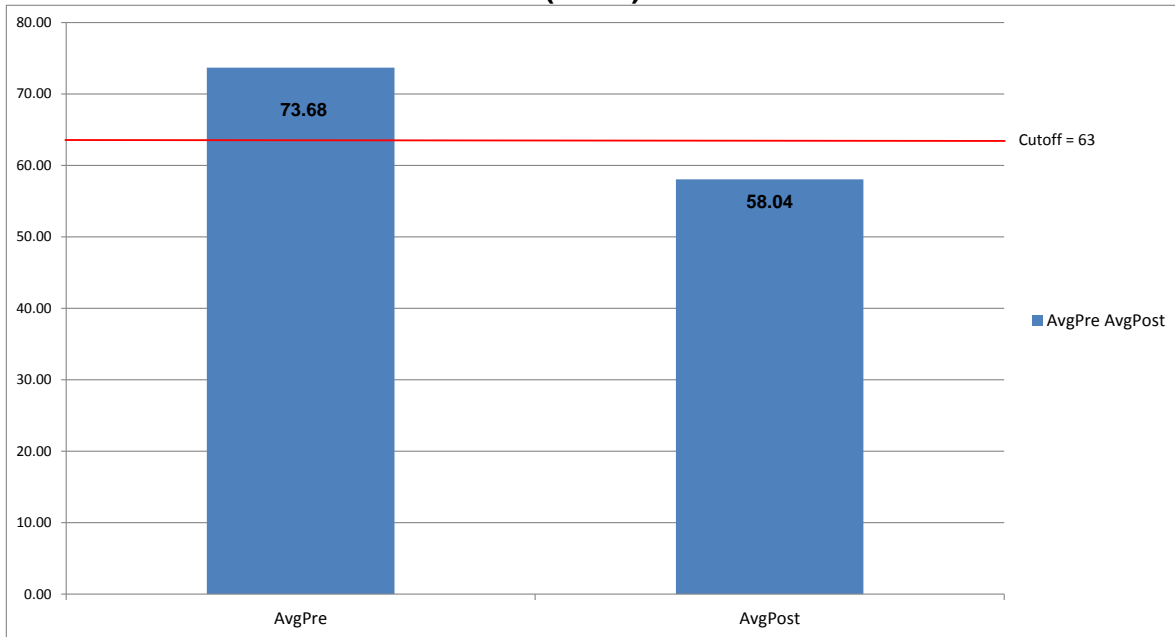
Youth Outcome Questionnaire – Self Report – 2.0 (YOQ-SR) (N=36)



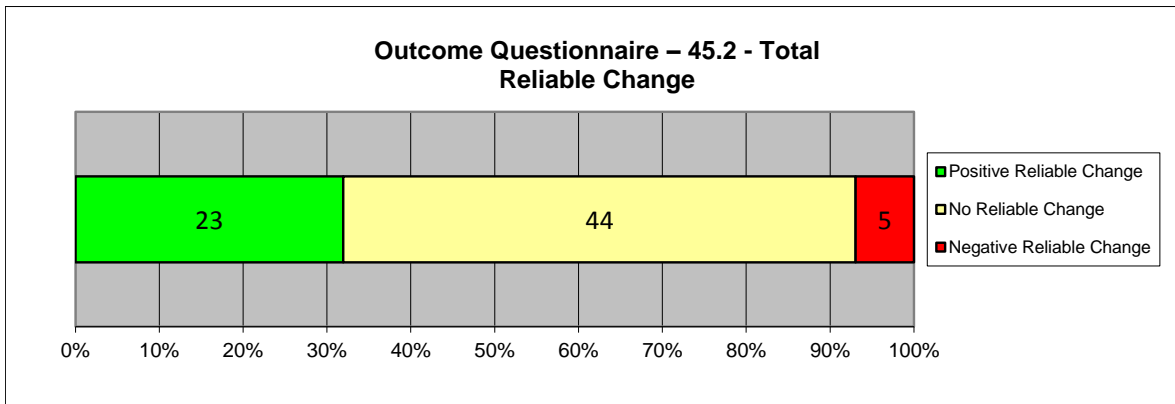
Youth Outcome Questionnaire – Self Report – 2.0 (YOQ-SR) Reliable Change



Outcome Questionnaire – 45.2Total (N=72)



Outcome Questionnaire – 45.2 - Total Reliable Change



Appendix

Youth Outcomes Questionnaires (YOQ (Parent) and YOQ-SR)

The Youth Outcome Questionnaire is a 64-item parent-report that assesses global distress in a child's/adolescent's life from 4-17 years of age. The YOQ-SR is the Self-report version of the YOQ and is completed by the child/adolescent him or herself. Scores on both measures can range from -16 to 240. Scores of 46 or higher are most similar to a clinical population on the YOQ. A score of 47 is most similar to that of a clinical population on the YOQ-SR.

Outcomes Questionnaires (OQ)

The Outcome Questionnaire is a 45-item self-report that assesses global distress in a client's life from ages 19 and older. Total Scores on this measure can range from 0 to 180, with scores of 63 or higher indicating clinical significance.

Reliable Change Index

When comparing Pre and Post scores, it is very helpful to know whether the change reported represents the real effects of the treatment or errors in the system of measurement. The Reliability of Change Index (RCI) is a statistical way of helping to insure that the change recorded between pre and post assessments exceeds that which would be expected on the basis of measurement error alone. The RCI has been calculated using the Jacobson and Truax (1991) method and indicates when change exceeds that which would be expected on the basis of error at the $p < .05$ probability level. For a more in-depth discussion of Reliability of Change see Jacobson, N. S., & Truax, P. (1991). Clinical Significance: A statistical approach to defining meaningful change in psychotherapy research. *Journal of Consulting and Clinical Psychology*, 59, 12-19. Also see Wise, E. A. (2004). Methods for analyzing psychotherapy outcomes: A review of clinical significance, reliable change, and recommendations for future directions. *Journal of Personality Assessment*, 82(1), 50-59.

The number and percent of clients experiencing positive change, no change and negative change are recorded in table 6. Healthful change in each of the measures cited here means that scores have decreased in value from pre to post test administrations (i.e. recorded a negative change on the RCI). To help avoid confusion, healthful reliable change is presented as positive while unhealthful reliable change is presented as negative change.

Supplemental Information for Table 3 “Other” Diagnosis Category

DSM-IV Primary Axis Diagnosis - Clients Who Entered CORS	n	Percent
Major Depressive Disorder, Recurrent, Moderate	31	8.20%
Anxiety Disorder NOS	27	7.14%
Post-Traumatic Stress Disorder	24	6.35%
Generalized Anxiety Disorder	22	5.82%
Disruptive Behavior Disorder NOS	20	5.29%
Major Depressive Disorder, Single Episode, Unspecified	17	4.50%
Major Depressive Disorder, Rec., Severe With Psychotic Features	17	4.50%
Adjustment Disorder W/Mixed Disturbance Emotion and Conduct	15	3.97%
Psychotic Disorder NOS	15	3.97%
Adjustment Disorder With Anxiety	15	3.97%
Dysthymic Disorder	14	3.70%
Adjustment Disorder Unspecified	14	3.70%
Major Depressive Disorder, Single Episode, Moderate	12	3.17%
Attention-Deficit/Hyperactivity Disorder, Combined Type or Hyperactive Impulse Type	12	3.17%
Major Depressive Disorder, Recurrent, Mild	11	2.91%
Schizophrenia, Paranoid Type	8	2.12%
Panic Disorder Without Agoraphobia	7	1.85%
Schizoaffective Disorder	7	1.85%
Acute Stress Disorder	7	1.85%
Oppositional Defiant Disorder	7	1.85%
Panic Disorder With Agoraphobia	6	1.59%
Bipolar Disorder NOS	6	1.59%
Major Depressive Disorder, SE, Severe W/O Psychotic Features	5	1.32%
Attention-Deficit/Hyperactivity Disorder NOS	4	1.06%
Major Depressive Disorder, Single Episode, Mild	4	1.06%
Attention-Deficit/Hyperactivity Disorder, Predominantly Inattentive Type	4	1.06%
Adjustment Disorder With Disturbance of Conduct	4	1.06%
Obsessive-Compulsive Disorder	3	0.79%
Mood Disorder Due to ...(Indicate Medical Condition)	3	0.79%
Disorder of Infancy, Childhood, or Adolescence NOS	3	0.79%
Major Depressive Disorder, Recurrent, Unspecified	3	0.79%
Bipolar I Disorder, Single Manic Episode, Unspecified	2	0.53%
Impulse-Control Disorder NOS	2	0.53%
Major Depressive Disorder, SE, Severe With Psychotic Features	2	0.53%
Diagnosis Deferred (code invalid as Secondary/Axis II Diagnosis)	2	0.53%
Bipolar II Disorder	1	0.26%
Delusional Disorder	1	0.26%
Pervasive Developmental Disorder NOS/Asperger's Disorder/Rett's Disorder	1	0.26%
Drug Related Disorder NOS	1	0.26%
Dissociative Amnesia	1	0.26%

DSM-IV Primary Axis Diagnosis - Clients Who Entered CORS	n	Percent
Bipolar I Disorder, MRE, Manic, Severe With Psychotic Features	1	0.26%
Conduct Disorder, Childhood-Onset Type	1	0.26%
Occupational Problem	1	0.26%
Parent-Child Relational Problem	1	0.26%
Bereavement	1	0.26%
Psychotic Disorder Due to ...(Indicate Medical Condition) with Delusions	1	0.26%
Major Depressive Disorder, Recurrent, In Partial Remission	1	0.26%
Bipolar I Disorder, MRE, Mixed, Severe With Psychotic Features	1	0.26%
Brief Psychotic Disorder	1	0.26%
Social Phobia	1	0.26%
Separation Anxiety Disorder	1	0.26%
Unspecified Mental Disorder (Nonpsychotic)	1	0.26%
Identity Problem	1	0.26%
Drug Induced Psychotic Disorder, With Hallucinations	1	0.26%
Schizophrenia, Undifferentiated Type	1	0.26%
Bipolar I Disorder, Single Manic Episode, Moderate	1	0.26%
Drug Induced Psychotic Disorder, With Delusions	1	0.26%
Drug Induced Mood Disorder	1	0.26%
TOTAL	378	100.00%

*Percentage is not exact due to rounding errors.