

COUNTY OF LOS ANGELES – DEPARTMENT OF MENTAL HEALTH  
PROGRAM SUPPORT BUREAU – MHSA IMPLEMENTATION AND OUTCOMES DIVISION



WELLNESS • RECOVERY • RESILIENCE

**Prevention & Early Intervention: Crisis Oriented Recovery Services (CORS)**

**Countywide Aggregate Practice Outcomes Dashboard Report**

**Outcome Data Submission through February 28, 2013**

**DIRECTLY OPERATED REPORT**

**Participating Legal Entities Include:**

<b>LA County Dept of Mental Health:</b>	Hollywood MHC
Augustus F Hawkins Family MHS	Long Beach MHS Adult Clinic
American Indian Counseling Center	Northeast MHC
Arcadia MHS	Roybal Family MHS
Coastal API Family MHC	San Antonio MHC
Compton Family MHS	San Pedro MHC
DMH at Harbor-UCLA Medical Center	South Bay MHS
Downtown MHC	

# of Clients Claimed to Practice	# of Clients Entered into PEI OMA	# of Tx Cycles in PEI OMA	Clients with Multiple Tx Cycles	Clients Completing Tx	Clients Dropping-Out of Tx
5047	6.04%	305	0.00%	32.46%	27.54%
n=	305	n=	0	99	84

Note 1: Clients Claimed was based on CORS being selected as the EBP in a PEI Plan and having  $\geq 1$  core services claimed to the practice starting July 1, 2011.

Note 2: Number of clients Completing Tx or Dropping-Out of Tx was determined by whether the EBP was said to be completed (e.g. answered “yes” or “no”) in the PEI OMA.

Total Number of Clients	Age	Gender			Ethnicity					Primary Language		
	Average	Female	Male	Unknown	African-American	Asian / Pacific Islander	Caucasian	Hispanic / Latino	Other	English	Spanish	Other
305	29	57.05%	42.62%	0.33%	23.61%	5.57%	12.79%	48.52%	9.51%	73.11%	23.93%	2.95%
n=		174	130	1	72	17	39	148	29	223	73	9

Note1: Age is calculated at the date of the first EBP.

Note2: Percentages may not total 100 due to missing data.

Total Treatment Cycles	Depressive Disorder NOS	Mood Disorder NOS	Adjustment Disorder With Anxiety and Depressed Mood	Major Depressive Disorder, Recurrent, Moderate	Major Depressive Disorder, Rec., Severe W/O Psychotic Features	Other*
305	11.80%	7.54%	6.56%	5.57%	5.25%	63.28%
n=	36	23	20	17	16	193

\*See breakout of “Other” on the supplemental information page.

Table 4: Program Process Data - Clients Who Entered CORS			
Outcome Measures Administered	Pre-Test with Scores	Post-test with Scores	Clients Who Completed both a Pre and Post Measure with Scores
Youth Outcome Questionnaire - 2.01 (Parent) n= Ackn=	89.58% 86 96	57.81% 37 64	36.46% 35 96
Youth Outcome Questionnaire – Self Report – 2.0 (YOQ-SR) n= Ackn=	88.24% 45 51	51.72% 15 29	29.41% 15 51
Outcome Questionnaire - 45.2 n= Ackn=	76.14% 134 176	54.55% 30 55	15.91% 28 176

Note 1: Number of acknowledged measures (Ackn=) is determined by the number of required measures that receive a score or an unable to collect reason code.

Note 2: The % indicated for Pre-test with scores, Post-test with scores, and both a Pre- and Post-test with scores is calculated by dividing the (n=#) by the number acknowledged (Ackn=#) in the PEI OMA system for each measure. The number acknowledged (Ackn=#) for those with Pre and Post scores is an estimate based on the greatest number of matches that could be expected given the number of Pre scores acknowledged.

Table 5a. Top Reasons Given for "Unable to Collect"

Youth Outcome Questionnaire (YOQ) - 2.01 (Parent)	Total Pre 10		Parent/care provider unavailable	Administration date exceeds acceptable range	Lost contact with parent/care provider	Administered wrong forms	
		percent	40.00%	30.00%	20.00%	10.00%	
		n	4	3	2	1	
	Total Post 27		Parent/care provider unavailable	Premature termination	Administration date exceeds acceptable range	Lost contact with parent/care provider	Parent/care provider refused
		percent	59.26%	22.22%	7.41%	7.41%	3.70%
		n	16	6	2	2	1

Table 5b. Top Reasons Given for "Unable to Collect"

Youth Outcome Questionnaire Self Report – 2.0 (YOQ-SR)	Total Pre 6		Administered wrong forms	Client unavailable	Outcome measure unavailable			
		percent	33.33%	33.33%	33.33%			
		n	2	2	2			
	Total Post 14		Client unavailable	Clinician not trained in outcome measure	Lost contact with client	Premature termination	Administered wrong forms	Other Reasons
		percent	64.29%	7.14%	7.14%	7.14%	7.14%	7.14%
		n	9	1	1	1	1	1

Table 5c. Top Reasons Given for "Unable to Collect"

Outcome Questionnaire - 45.2	Total Pre 42		Outcome measure unavailable	Client refused	Premature termination	Client unavailable	Administration date exceeds acceptable range	Other Reasons
		percent	26.19%	23.81%	14.29%	11.90%	9.52%	14.29%
		n	11	10	6	5	4	6
	Total Post 25		Client unavailable	Lost contact with client	Outcome measure unavailable	Premature termination	Administration date exceeds acceptable range	Other Reasons
		percent	44.00%	24.00%	8.00%	8.00%	8.00%	8.00%
		n	11	6	2	2	2	2

Table 6. Service Delivery Data – Clients Who Completed CORS

Total Treatment Cycles 99	Average Length of Treatment in Weeks	Range of Treatment Weeks		Average Number of Sessions	Range of Sessions	
	9	Min 0	Max 48	5	Min 1	Max 16

Note: Completed CORS is defined as having a 'yes' for completion indicated in the PEI OMA.

<b>Table 7a. Outcome Data* – Clients who Completed CORS</b>					
		<b>Percent Improvement from Pre to Post</b>	<b>Percent of Clients Showing Reliable Change* from Pre-CORS to Post-CORS</b>		
			<b>Positive Change</b>	<b>No Change</b>	<b>Negative Change</b>
<b>Youth Outcome Questionnaire (YOQ) - 2.01 (Parent)</b>	<b>TOTAL</b>	34.64% (n=35)	48.57%	42.86%	8.57%
			17	15	3
<b>Youth Outcome Questionnaire - Self Report - 2.0 (YOQ-SR)</b>	<b>TOTAL</b>	Not Enough Data	0.00%	0.00%	0.00%
			NA	NA	NA
<b>Outcome Questionnaire – 45.2</b>	<b>TOTAL</b>	12.65% (n=26)	23.08%	65.38%	11.54%
			6	17	3

\*Please see Appendix A. for a description of the CORS outcome measures and the outcome indicators (percent improvement in average scores; and, percent of clients showing reliable change).

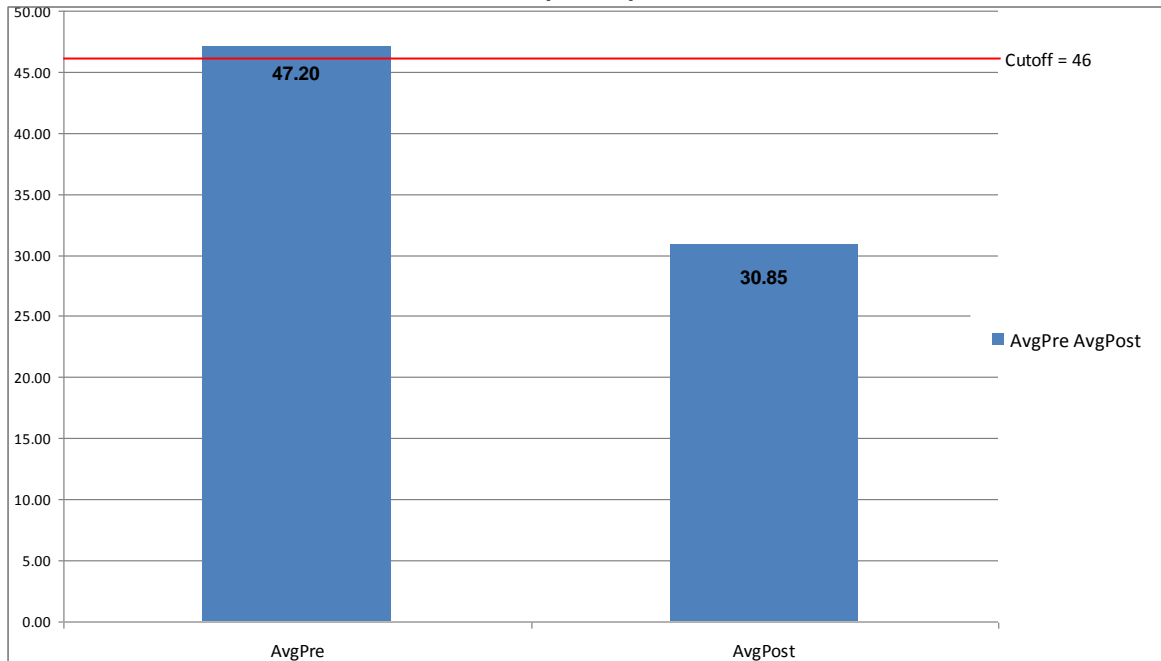
Note 2 Possible YOQ-Parent Total Scores can range from -16 -240, with a clinical cutpoint of 46

Note 3: Possible YOQ-SR Total Scores can range from -16-240, with a clinical cutpoint of 47.

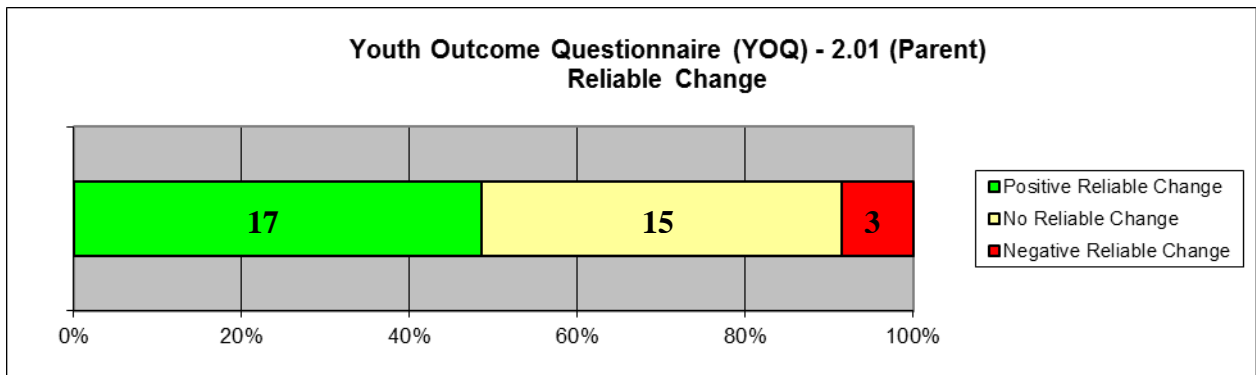
Note 4: Aggregate outcome data based on fewer than 20 clients are not reported.

Note 5: Positive Change indicates that the scores decreased from the pre to the post measures.

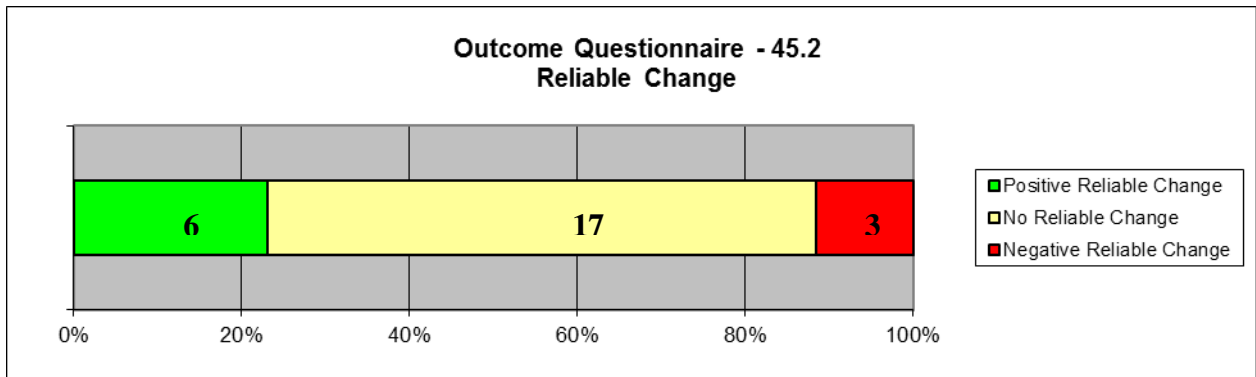
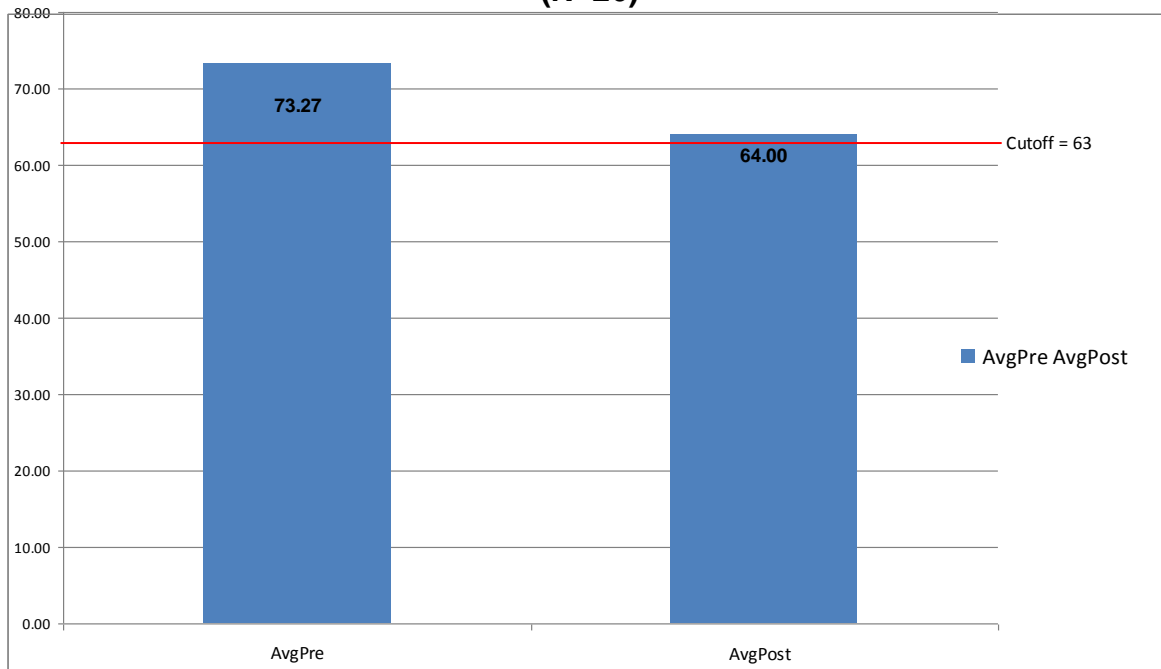
**Youth Outcome Questionnaire (YOQ) - 2.01 (Parent)  
(N=35)**



**Youth Outcome Questionnaire (YOQ) - 2.01 (Parent)  
Reliable Change**



### Outcome Questionnaire – 45.2 (N=26)





## Appendix

### Youth Outcomes Questionnaires ( YOQ (Parent) and YOQ-SR)

The Youth Outcome Questionnaire is a 64-item parent-report that assesses global distress in a child's/adolescent's life from 4-17 years of age. The YOQ-SR is the Self-report version of the YOQ and is completed by the child/adolescent him or herself. Scores on both measures can range from -16 to 240. Scores of 46 or higher are most similar to a clinical population on the YOQ. A score of 47 is most similar to that of a clinical population on the YOQ-SR.

### Outcomes Questionnaires (OQ)

The Outcome Questionnaire is a 45-item self-report that assesses global distress in a client's life from ages 19 and older. Total Scores on this measure can range from 0 to 180, with scores of 63 or higher indicating clinical significance.

### Reliable Change Index

When comparing Pre and Post scores, it is very helpful to know whether the change reported represents the real effects of the treatment or errors in the system of measurement. The Reliability of Change Index (RCI) is a statistical way of helping to insure that the change recorded between pre and post assessments exceeds that which would be expected on the basis of measurement error alone. The RCI has been calculated using the Jacobson and Truax (1991) method and indicates when change exceeds that which would be expected on the basis of error at the  $p < .05$  probability level. For a more in-depth discussion of Reliability of Change see Jacobson, N. S., & Truax, P. (1991). Clinical Significance: A statistical approach to defining meaningful change in psychotherapy research. *Journal of Consulting and Clinical Psychology*, 59, 12-19. Also see Wise, E. A. (2004). Methods for analyzing psychotherapy outcomes: A review of clinical significance, reliable change, and recommendations for future directions. *Journal of Personality Assessment*, 82(1), 50-59.

The number and percent of clients experiencing positive change, no change and negative change are recorded in table 6. Healthful change in each of the measures cited here means that scores have decreased in value from pre to post test administrations (i.e. recorded a negative change on the RCI). To help avoid confusion, healthful reliable change is presented as positive while unhealthful reliable change is presented as negative change.

### Supplemental Information for Table 3 “Other” Category

DSM-IV Primary Axis Diagnosis - Clients Who Entered CORS	n	Percent
Psychotic Disorder NOS	13	4.26%
Post-Traumatic Stress Disorder	12	3.93%
Major Depressive Disorder, Rec., Severe With Psychotic Features	12	3.93%
Disruptive Behavior Disorder NOS	11	3.61%
Adjustment Disorder With Depressed Mood	11	3.61%
Generalized Anxiety Disorder	11	3.61%
Anxiety Disorder NOS	10	3.28%
Attention-Deficit/Hyperactivity Disorder, Combined Type or Hyperactive Impulse Type	8	2.62%
Schizophrenia, Paranoid Type	7	2.30%
Dysthymic Disorder	7	2.30%
Adjustment Disorder W/Mixed Disturbance Emotion and Conduct	7	2.30%
Major Depressive Disorder, Single Episode, Moderate	7	2.30%
Adjustment Disorder Unspecified	7	2.30%
Schizoaffective Disorder	7	2.30%
Bipolar Disorder NOS	6	1.97%
Major Depressive Disorder, SE, Severe W/O Psychotic Features	5	1.64%
Panic Disorder Without Agoraphobia	4	1.31%
Major Depressive Disorder, Recurrent, Mild	4	1.31%
Adjustment Disorder With Anxiety	4	1.31%
Major Depressive Disorder, Single Episode, Mild	3	0.98%
Disorder of Infancy, Childhood, or Adolescence NOS	3	0.98%
Panic Disorder With Agoraphobia	3	0.98%
Attention-Deficit/Hyperactivity Disorder, Predominantly Inattentive Type	2	0.66%
Attention-Deficit/Hyperactivity Disorder NOS	2	0.66%
Oppositional Defiant Disorder	2	0.66%
Major Depressive Disorder, SE, Severe With Psychotic Features	2	0.66%
Major Depressive Disorder, Recurrent, In Partial Remission	1	0.33%
Brief Psychotic Disorder	1	0.33%
Impulse-Control Disorder NOS	1	0.33%
Pervasive Developmental Disorder NOS/Asperger's Disorder/Rett's Disorder	1	0.33%
Diagnosis Deferred (code invalid as Secondary/Axis II Diagnosis)	1	0.33%
Drug Induced Mood Disorder	1	0.33%
Bipolar I Disorder, Single Manic Episode, Moderate	1	0.33%
Major Depressive Disorder, Single Episode, Unspecified	1	0.33%
Bipolar I Disorder, MRE, Manic, Severe With Psychotic Features	1	0.33%
Acute Stress Disorder	1	0.33%
Identity Problem	1	0.33%
Bereavement	1	0.33%

Psychotic Disorder Due to ...(Indicate Medical Condition) with Delusions	1	0.33%
Schizophrenia, Undifferentiated Type	1	0.33%
Occupational Problem	1	0.33%
Mood Disorder Due to ...(Indicate Medical Condition)	1	0.33%
Bipolar I Disorder, Single Manic Episode, Unspecified	1	0.33%
Unspecified Mental Disorder (Nonpsychotic)	1	0.33%
Obsessive-Compulsive Disorder	1	0.33%
Parent-Child Relational Problem	1	0.33%
Drug Related Disorder NOS	1	0.33%
Drug Induced Psychotic Disorder, With Hallucinations	1	0.33%
Major Depressive Disorder, Recurrent, Unspecified	1	0.33%
TOTAL OTHER	193	63.28%