

**COUNTY OF LOS ANGELES – DEPARTMENT OF MENTAL HEALTH  
PROGRAM SUPPORT BUREAU – MHSA IMPLEMENTATION AND OUTCOMES DIVISION**



WELLNESS • RECOVERY • RESILIENCE

**Prevention & Early Intervention: Crisis Oriented Recovery Services (CORS)**

**Countywide Aggregate Practice Outcomes Dashboard Report**

**Outcome Data Submission through February 28, 2013**

**Participating Legal Entities Include:**

Amanecer Community Counseling Services	Special Service For Groups	Downtown MHC
Center for Integrated Family Health	St Johns Hospital Child Study Center	Hollywood MHC
Child and Family Center	<b>LA County Dept of Mental Health:</b>	Long Beach MHS Adult Clinic
Didi Hirsch Psychiatric Service	Augustus F Hawkins Family MHS	Northeast MHC
Drew Child Development Corporation	American Indian Counseling Center	Roybal Family MHS
Enki Health and Research Systems	Arcadia MHS	San Antonio MHC
Heritage Clinic and The Comm For Se	Coastal API Family MHC	San Pedro MHC
Jewish Family Service of Los Angeles	Compton Family MHS	South Bay MHS
San Fernando Valley Community MHC	DMH at Harbor-UCLA Medical Center	

**Agencies submitting outcomes that are not approved to provide CORS by PEI Administration:**

Child and Family Guidance
---------------------------

# of Clients Claimed to Practice	# of Clients Entered into PEI OMA	# of Tx Cycles in PEI OMA	Clients with Multiple Tx Cycles	Clients Completing Tx	Clients Dropping-Out of Tx
8008	5.59%	449	0.22%	37.86%	23.39%
n=	448	n=	1	170	105

Note 1: Clients Claimed was based on CORS being selected as the EBP in a PEI Plan and having  $\geq 1$  core services claimed to the practice starting July 1, 2011.

Note 2: Number of clients Completing Tx or Dropping-Out of Tx was determined by whether the EBP was said to be completed (e.g. answered “yes” or “no”) in the PEI OMA.

Total Number of Clients	Age	Gender			Ethnicity					Primary Language		
	Average	Female	Male	Unknown	African-American	Asian / Pacific Islander	Caucasian	Hispanic / Latino	Other	English	Spanish	Other
448	29	59.38%	40.40%	0.22%	19.42%	4.46%	12.72%	53.35%	10.04%	70.31%	25.22%	4.46%
n=		266	181	1	87	20	57	239	45	315	113	20

Note1: Age is calculated at the date of the first EBP.

Note2: Percentages may not total 100 due to missing data.

Total Treatment Cycles	Depressive Disorder NOS	Adjustment Disorder With Anxiety and Depressed Mood	Adjustment Disorder With Depressed Mood	Mood Disorder NOS	Major Depressive Disorder, Rec., Severe W/O Psychotic Features	Other*
449	11.16%	7.14%	6.47%	5.80%	5.13%	64.29%
n=	50	32	29	26	23	288

\*See breakout of “Other” on the supplemental information page.

Table 4: Program Process Data - Clients Who Entered CORS			
Outcome Measures Administered	Pre-Test with Scores	Post-test with Scores	Clients Who Completed both a Pre and Post Measure with Scores
Youth Outcome Questionnaire - (YOQ) 2.01 (Parent)	79.63%	66.38%	38.27%
	n= 129	77	62
	Ackn= 162	116	162
Youth Outcome Questionnaire – Self Report – 2.0 (YOQ-SR)	84.52%	58.18%	34.52%
	n= 71	32	29
	Ackn= 84	55	84
Outcome Questionnaire - 45.2	67.61%	48.86%	14.98%
	n= 167	43	37
	Ackn= 247	88	247

Note 1: Number of acknowledged measures (Ackn=) is determined by the number of required measures that receive a score or an unable to collect reason code.

Note 2: The % indicated for Pre-test with scores, Post-test with scores, and both a Pre- and Post-test with scores is calculated by dividing the (n=#) by the number acknowledged (Ackn=#) in the PEI OMA system for each measure. The number acknowledged (Ackn=#) for those with Pre and Post scores is an estimate based on the greatest number of matches that could be expected given the number of Pre scores acknowledged.

Youth Outcome Questionnaire (YOQ) - 2.01 (Parent)	Total Pre 33		Outcome measure unavailable	Parent/care provider unavailable	Administration date exceeds acceptable range	Administered wrong forms	Lost contact with parent/care provider	Other Reasons
		percent	33.33%	33.33%	15.15%	9.09%	6.06%	3.03%
		n	11	11	5	3	2	1
	Total Post 39		Parent/care provider unavailable	Premature termination	Lost contact with parent/care provider	Administration date exceeds acceptable range	Parent/care provider refused	Other Reasons
		percent	56.41%	20.51%	7.69%	7.69%	5.13%	2.56%
		n	22	8	3	3	2	1

Youth Outcome Questionnaire Self Report – 2.0 (YOQ-SR)	Total Pre 13		Outcome measure unavailable	Client unavailable	Administered wrong forms	Administration date exceeds acceptable range		
		percent	46.15%	23.08%	23.08%	7.69%		
		n	6	3	3	1		
	Total Post 23		Client unavailable	Administration date exceeds acceptable range	Lost contact with client	Premature termination	Clinician not trained in outcome measure	Other Reasons
		percent	47.83%	13.04%	8.70%	8.70%	4.35%	17.39%
		n	11	3	2	2	1	4

Table 5c. Top Reasons Given for "Unable to Collect"

Outcome Questionnaire - 45.2	Total Pre 80		Outcome measure unavailable	Clinician not trained in outcome measure	Client refused	Administration date exceeds acceptable range	Premature termination	Other Reasons
		percent	28.75%	23.75%	15.00%	11.25%	7.50%	13.75%
		n	23	19	12	9	6	11
	Total Post 45		Client unavailable	Lost contact with client	Outcome measure unavailable	Administration date exceeds acceptable range	Clinician not trained in outcome measure	Other Reasons
		percent	33.33%	20.00%	15.56%	11.11%	8.89%	11.11%
		n	15	9	7	5	4	5

Table 6. Service Delivery Data – Clients Who Completed CORS

Total Treatment Cycles 170	Average Length of Treatment in Weeks	Range of Treatment Weeks		Average Number of Sessions	Range of Sessions	
	9	Min 0	Max 48	7	Min 1	Max 30

Note: Completed CORS is defined as having a 'yes' for completion indicated in the PEI OMA.

<b>Table 7a. Outcome Data* – Clients who Completed CORS</b>					
		<b>Percent Improvement from Pre to Post</b>	<b>Percent of Clients Showing Reliable Change* from Pre-CORS to Post-CORS</b>		
			<b>Positive Change</b>	<b>No Change</b>	<b>Negative Change</b>
<b>Youth Outcome Questionnaire (YOQ) - 2.01 (Parent)</b>	<b>TOTAL</b>	31.96% (n=62)	46.77%	45.16%	8.06%
			29	28	5
<b>Youth Outcome Questionnaire - Self Report - 2.0 (YOQ-SR)</b>	<b>TOTAL</b>	26.76% (n=29)	34.48%	62.07%	3.45%
			10	18	1
<b>Outcome Questionnaire – 45.2</b>	<b>TOTAL</b>	18.57% (n=35)	28.57%	62.86%	8.57%
			10	22	3

\*Please see Appendix A. for a description of the CORS outcome measures and the outcome indicators (percent improvement in average scores; and, percent of clients showing reliable change).

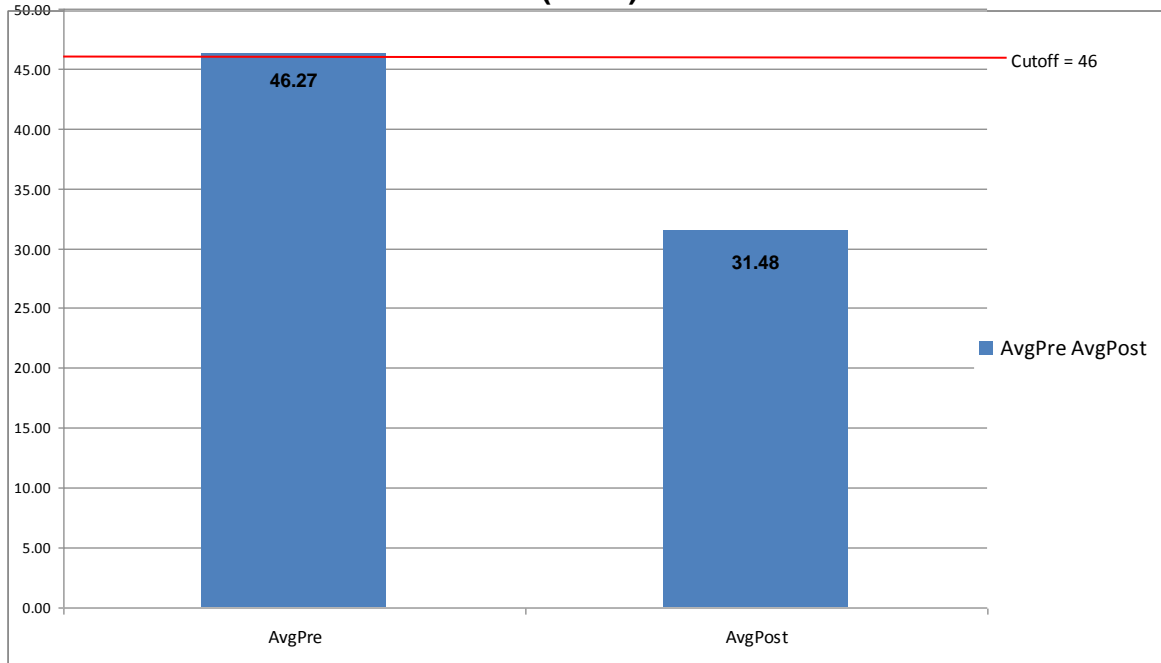
Note 2 Possible YOQ-Parent Total Scores can range from -16 -240, with a clinical cutpoint of 46

Note 3: Possible YOQ-SR Total Scores can range from -16-240, with a clinical cutpoint of 47.

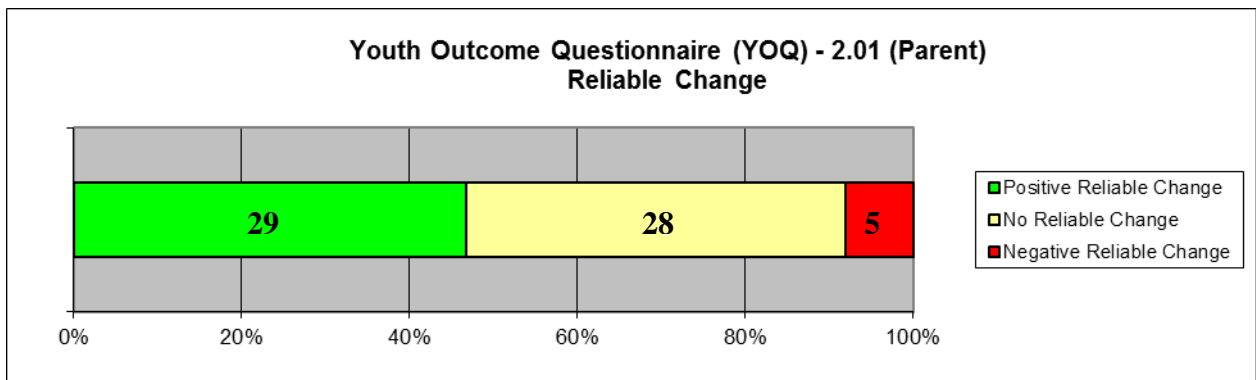
Note 4: Aggregate outcome data based on fewer than 20 clients are not reported.

Note 5: Positive Change indicates that the scores decreased from the pre to the post measures.

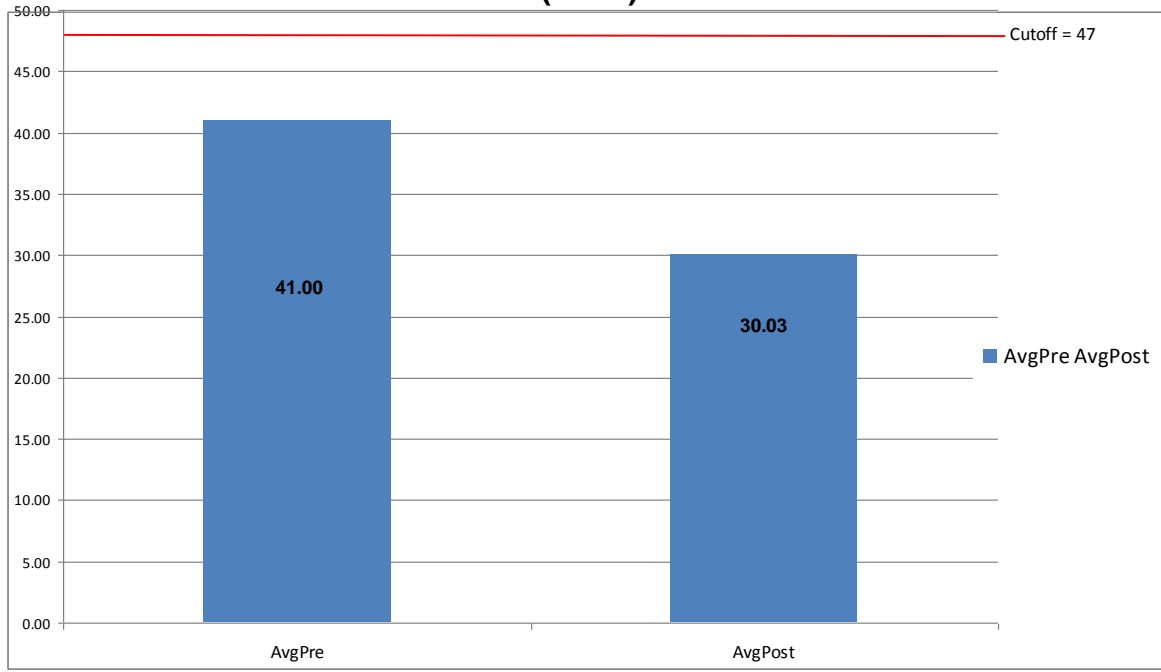
**Youth Outcome Questionnaire (YOQ) - 2.01 (Parent)  
(N=62)**



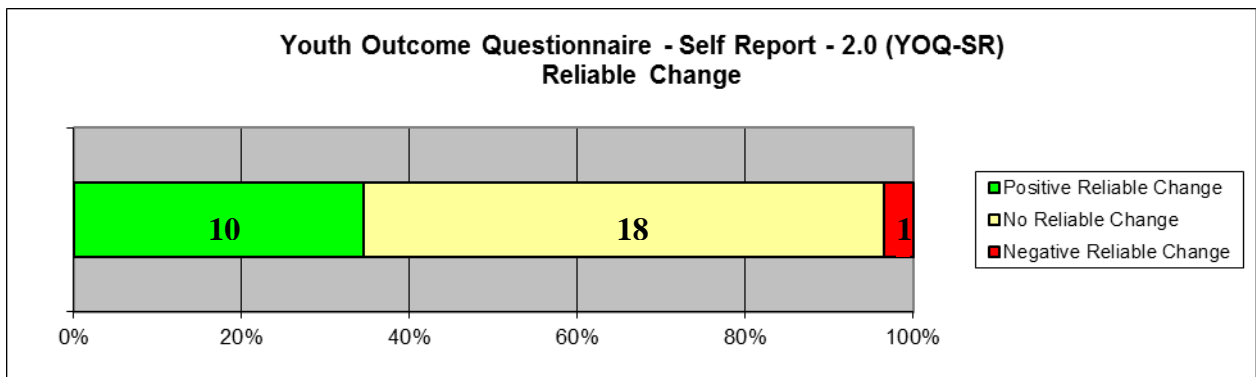
**Youth Outcome Questionnaire (YOQ) - 2.01 (Parent)  
Reliable Change**



### Youth Outcome Questionnaire – Self Report – 2.0 (YOQ-SR) (N=29)

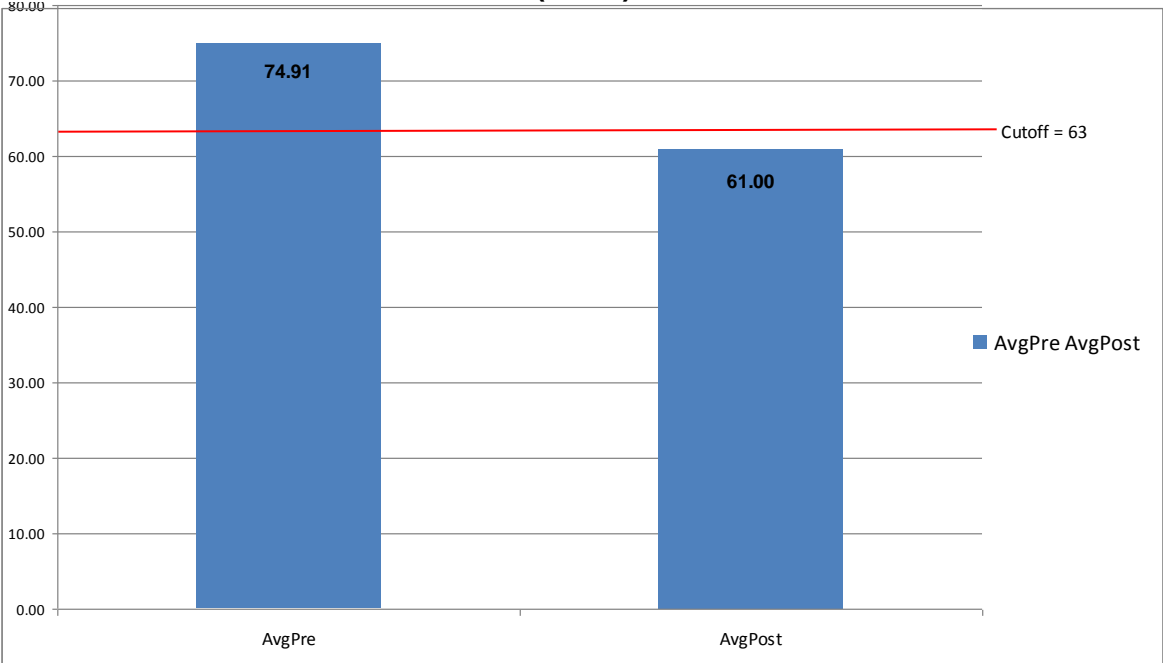


### Youth Outcome Questionnaire - Self Report - 2.0 (YOQ-SR) Reliable Change

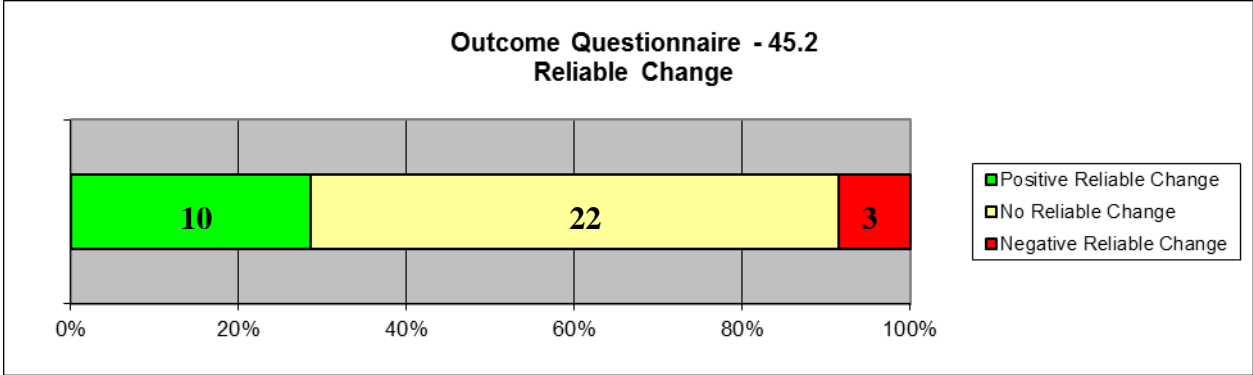




**Outcome Questionnaire – 45.2 Total  
(N=35)**



**Outcome Questionnaire - 45.2  
Reliable Change**



## Appendix

### Youth Outcomes Questionnaires ( YOQ (Parent) and YOQ-SR)

The Youth Outcome Questionnaire is a 64-item parent-report that assesses global distress in a child's/adolescent's life from 4-17 years of age. The YOQ-SR is the Self-report version of the YOQ and is completed by the child/adolescent him or herself. Scores on both measures can range from -16 to 240. Scores of 46 or higher are most similar to a clinical population on the YOQ. A score of 47 is most similar to that of a clinical population on the YOQ-SR.

### Outcomes Questionnaires (OQ)

The Outcome Questionnaire is a 45-item self-report that assesses global distress in a client's life from ages 19 and older. Total Scores on this measure can range from 0 to 180, with scores of 63 or higher indicating clinical significance.

### Reliable Change Index

When comparing Pre and Post scores, it is very helpful to know whether the change reported represents the real effects of the treatment or errors in the system of measurement. The Reliability of Change Index (RCI) is a statistical way of helping to insure that the change recorded between pre and post assessments exceeds that which would be expected on the basis of measurement error alone. The RCI has been calculated using the Jacobson and Truax (1991) method and indicates when change exceeds that which would be expected on the basis of error at the  $p < .05$  probability level. For a more in-depth discussion of Reliability of Change see Jacobson, N. S., & Truax, P. (1991). Clinical Significance: A statistical approach to defining meaningful change in psychotherapy research. *Journal of Consulting and Clinical Psychology*, 59, 12-19. Also see Wise, E. A. (2004). Methods for analyzing psychotherapy outcomes: A review of clinical significance, reliable change, and recommendations for future directions. *Journal of Personality Assessment*, 82(1), 50-59.

The number and percent of clients experiencing positive change, no change and negative change are recorded in table 6. Healthful change in each of the measures cited here means that scores have decreased in value from pre to post test administrations (i.e. recorded a negative change on the RCI). To help avoid confusion, healthful reliable change is presented as positive while unhealthful reliable change is presented as negative change.

### Supplemental Information for Table 3 “Other” Category

DSM-IV Primary Axis Diagnosis - Clients Who Entered CORS	n	Percent
Major Depressive Disorder, Recurrent, Moderate	20	4.45%
Anxiety Disorder NOS	18	4.01%
Post-Traumatic Stress Disorder	17	3.79%
Disruptive Behavior Disorder NOS	17	3.79%
Psychotic Disorder NOS	15	3.34%
Adjustment Disorder W/Mixed Disturbance Emotion and Conduct	14	3.12%
Major Depressive Disorder, Single Episode, Unspecified	14	3.12%
Major Depressive Disorder, Rec., Severe With Psychotic Features	14	3.12%
Generalized Anxiety Disorder	13	2.90%
Dysthymic Disorder	13	2.90%
Adjustment Disorder With Anxiety	11	2.45%
Major Depressive Disorder, Single Episode, Moderate	10	2.23%
Adjustment Disorder Unspecified	10	2.23%
Attention-Deficit/Hyperactivity Disorder, Combined Type or Hyperactive Impulse Type	9	2.00%
Major Depressive Disorder, Recurrent, Mild	8	1.78%
Schizophrenia, Paranoid Type	8	1.78%
Schizoaffective Disorder	7	1.56%
Bipolar Disorder NOS	6	1.34%
Major Depressive Disorder, SE, Severe W/O Psychotic Features	5	1.11%
Panic Disorder Without Agoraphobia	5	1.11%
Oppositional Defiant Disorder	4	0.89%
Panic Disorder With Agoraphobia	4	0.89%
Adjustment Disorder With Disturbance of Conduct	3	0.67%
Acute Stress Disorder	3	0.67%
Major Depressive Disorder, SE, Severe With Psychotic Features	3	0.67%
Major Depressive Disorder, Single Episode, Mild	3	0.67%
Major Depressive Disorder, Recurrent, Unspecified	3	0.67%
Disorder of Infancy, Childhood, or Adolescence NOS	3	0.67%
Attention-Deficit/Hyperactivity Disorder NOS	2	0.45%
Mood Disorder Due to ...(Indicate Medical Condition)	2	0.45%
Obsessive-Compulsive Disorder	2	0.45%
Attention-Deficit/Hyperactivity Disorder, Predominantly Inattentive Type	2	0.45%
Diagnosis Deferred (code invalid as Secondary/Axis II Diagnosis)	1	0.22%
Pervasive Developmental Disorder NOS/Asperger's Disorder/Rett's Disorder	1	0.22%
Bipolar I Disorder, Single Manic Episode, Unspecified	1	0.22%
Identity Problem	1	0.22%
Drug Related Disorder NOS	1	0.22%
Unspecified Mental Disorder (Nonpsychotic)	1	0.22%

Occupational Problem	1	0.22%
Conduct Disorder, Childhood-Onset Type	1	0.22%
Major Depressive Disorder, Recurrent, In Partial Remission	1	0.22%
Schizophrenia, Undifferentiated Type	1	0.22%
Drug Induced Psychotic Disorder, With Hallucinations	1	0.22%
Psychotic Disorder Due to ...(Indicate Medical Condition) with Delusions	1	0.22%
Bipolar I Disorder, Single Manic Episode, Moderate	1	0.22%
Bipolar I Disorder, MRE, Manic, Severe With Psychotic Features	1	0.22%
Drug Induced Mood Disorder	1	0.22%
Brief Psychotic Disorder	1	0.22%
Impulse-Control Disorder NOS	1	0.22%
Delusional Disorder	1	0.22%
Bipolar I Disorder, MRE, Mixed, Severe With Psychotic Features	1	0.22%
Parent-Child Relational Problem	1	0.22%
Bereavement	1	0.22%
TOTAL OTHER	289	64.37%*

\*Percentage is not exact due to rounding errors.