

**COUNTY OF LOS ANGELES – DEPARTMENT OF MENTAL HEALTH  
PROGRAM SUPPORT BUREAU – MHSA IMPLEMENTATION AND OUTCOMES DIVISION**



**Prevention & Early Intervention: Seeking Safety  
Countywide Aggregate Practice Outcomes Dashboard Report  
Outcome Data Submission through December 21, 2015**

**Participating Legal Entities Include:**

ALCOTT CENTER FOR MENTAL HEALTH SVC	HATHAWAY SYCAMORES CHILD FAM SVC	ST JOSEPH CENTER
ALMA FAMILY SERVICES	HELPLINE YOUTH COUNSELING INC	STIRLING ACADEMY, INC.
AMANECER COMMUNITY COUNSELING SVC	HERITAGE CLINIC	SUNBRIDGE HARBOR VIEW REHAB CTR
BARBOUR AND FLOYD MEDCL ASSOCIATES	HILLSIDES	TARZANA TREATMENT CENTERS INC
BIENVENIDOS CHILDRENS CENTER INC	HILLVIEW MENTAL HEALTH CENTER INC	TELECARE CORPORATION
BRIDGES INC	IMCES INC	TESSIE CLEVELAND COMM SRVC CORP
CA HISPANIC COMMISSION A D ABUSE	INS FOR RDSGN OF LEARN DBA ALMANSOR	THE GUIDANCE CENTER
CHILD AND FAMILY CENTER	INTERCOMMUNITY CHILD GUIDANCE CTR	THE HELP GROUP CHILD AND FAMILY CTR
CHILD AND FAMILY GUIDANCE CENTER	JEWISH FAMILY SERVICE OF LOS ANGELES	THE VILLAGE FAMILY SERVICES
CHILDRENS CENTER OF ANTELOPE VALLEY	LEROY HAYNES FOUNDATION INC	TOBINWORLD
CHILDRENS HOSPITAL OF LOS ANGELES	LOS ANGELES CHILD GUIDANCE	TRINITY YOUTH SERVICES
CHILDRENS INSTITUTE INC	MARYVALE	UNITED AMERICAN INDIAN INVOLVEMENT
COUNSELING AND RESEARCH ASSC INC	MCKINLEY CHILDRENS CENTER	VIP COMMUNITY MENTAL HEALTH CTR INC
COUNSELING4KIDS	MENTAL HEALTH AMERICA OF LA	VISTA DEL MAR CHILD AND FAMILY SVC
CRITTENTON SERV FOR CHILD AND FAMILIES	OLIVE CREST	<b>L.A. COUNTY DMH</b>
D VEAL FAMILY AND YOUTH SVC	OPTIMIST YOUTH HOMES DBA BOYS HOME	EDMUND D. EDELMAN WESTSIDE
DAVID AND MARGARET HOME INC	PACIFIC ASIAN COUN SVS	WEST CENTRAL FAMILY MHS
DIDI HIRSCH PSYCHIATRIC SVC	PACIFIC CLINICS	NORTHEAST MENTAL HEALTH CENTER
DIGNITY HEALTH DBA CAL HOSP MED CTR	PACIFIC LODGE YOUTH SERVICES	ARCADIA MHS
DREW CHILD DEVELOPMENT CORPORATION	PASADENA UNIFIED SCHOOL DISTRICT	LONG BEACH CHILD ADOLESCENT CLINIC
EGGLESTON YOUTH CENTERS INC	PENNY LANE CENTERS	LONG BEACH MHS ADULT CLINIC
EISNER PEDIATRIC FAMILY CTR	PHOENIX HOUSE OF LOS ANGELES INC	SAN PEDRO MENTAL HEALTH
EL CENTRO DE AMISTAD INC	PROVIDENCE COMMUNITY SERVICES	RIO HONDO COMMUNITY MHC
EL CENTRO DEL PUEBLO INC	ROSEMARY CHILDRENS SERVICE	SOUTH BAY MHS
ENKI HEALTH AND RESEARCH SYSTEMS I	SAINT JOHNS HEALTH CENTER	COMPTON FAMILY MHS
ETTIE LEE HOMES, INC.	SAN FERNANDO VALLEY COMMUNITY MHC	HARBOR-UCLA MEDICA
EXCEPTIONAL CHILDRENS FOUNDATION	SAN GABRIEL CHILDRENS CENTER INC	AUGUSTUS F HAWKINS FAMILY
FAMILIES FIRST INC	SHIELDS FOR FAMILIES	DOWNTOWN MENTAL HEALTH
FIVE ACRES	SOCIAL MODEL RECOVERY SYSTEMS	COASTAL API FAMILY MHC
FOOTHILL FAMILY SERVICE	SOUTH CENTRAL HEALTH AND REHAB PROG	LONG BEACH API FAMILY MHC
FOR THE CHILD	SPECIAL SERVICE FOR GROUPS	AMERICAN INDIAN COUNSELING
GATEWAYS HOSPITAL AND MENTAL HEALTH	SPIRITT FAMILY SERVICES	TIES FOR FAMILIES
HAMBURGER HOME DBA AVIVA CENTER	ST ANNES	JUV JUS TRANSITION AFTERCARE

**Agencies submitting outcomes that are not approved to provide Seeking Safety by PEI Administration:**

ASIAN AMERICAN DRUG ABUSE PROGRAM	L.A. COUNTY DMH
VENICE FAMILY CLINIC	ANTELOPE VALLEY MHS
KEDREN COMMUNITY MENTAL HEALTH CTR	HOLLYWOOD MHC

**Table 1. Seeking Safety Status since inception to December 21, 2015**

# of Clients Claimed to Practice	# of Clients entered into PEI OMA	# of Tx cycles in PEI OMA	Clients with Multiple Tx Cycles	Clients Completing Tx	Clients Dropping-Out of Tx	Clients Still in Tx
21703	62.51%	14629	6.95%	27.05%	41.71%	31.23%
n=	13566	n=	943	3957	6102	4569

Note 1: Clients claimed was based on Seeking Safety being selected as the EBP in a PEI Plan and having  $\geq 2$  core services claimed to the practice.

Note 2: Number of clients Completing Tx or Dropping-Out of Tx was determined by whether the EBP was said to be completed (e.g. answered “yes” or “no”) in the PEI OMA.

**Table 2. Client Demographics - Clients Who Entered Seeking Safety**

Total Number of Clients	Age	Gender			Ethnicity					Primary Language		
	Average	Female	Male	Unknown	African-American	Asian / Pacific Islander	Caucasian	Hispanic / Latino	Other	English	Spanish	Other
13566	22	51.26%	48.67%	0.07%	19.56%	2.23%	11.87%	60.25%	6.10%	76.87%	20.30%	2.83%
n=		6954	6602	10	2654	302	1610	8173	827	10428	2754	384

Note1: Age is calculated at the date of the first EBP.

Note2: Percentages may not total 100 due to missing data and/or rounding.

**Table 3. Top 5 Most Frequently Reported DSM-IV Primary Axis Diagnosis - Clients Who Entered Seeking Safety**

Total Treatment Cycles	Depressive Disorder NOS	Oppositional Defiant Disorder	Post-Traumatic Stress Disorder	Mood Disorder NOS	Dysthymic Disorder	Other
14273	10.30%	9.55%	9.53%	8.31%	6.61%	55.70%
n=	1470	1363	1360	1186	944	7950

Note1: The above diagnoses are from inception through October 27, 2015.

\*See breakout of “Other” on the supplemental information page.

Table 4. Program Process Data - Clients Who Entered Seeking Safety			
Outcome Measures Administered	Pre-Test with Scores	Post-test with Scores	Clients Who Completed both a Pre and Post Measure with Scores
UCLA PTSD-RI - Parent	34.28%	16.60%	7.94%
	n= 3356	1106	777
	Ackn= 9789	6662	9789
UCLA PTSD-RI – Child/Adolescent	63.67%	29.05%	15.66%
	n= 6627	2035	1630
	Ackn= 10408	7004	10408
UCLA PTSD-RI - Adult	61.96%	27.15%	12.92%
	n= 2101	527	438
	Ackn= 3391	1941	3391
Youth Outcome Questionnaire - 2.01 (Parent)	46.96%	22.07%	11.02%
	n= 4349	1384	1021
	Ackn= 9262	6270	9262
Youth Outcome Questionnaire – Self Report – 2.0 (YOQ-SR)	74.64%	35.73%	19.62%
	n= 7404	2365	1946
	Ackn= 9920	6619	9920
Outcome Questionnaire - 45.2	76.51%	36.67%	16.87%
	n= 3098	820	683
	Ackn= 4049	2236	4049

Note 1: Number of acknowledged measures (Ackn=) is determined by the number of required measures that receive a score or an unable to collect reason code.

Note 2: The % indicated for Pre-test with scores, Post-test with scores, and both a Pre- and Post-test with scores is calculated by dividing the (n=#) by the number acknowledged (Ackn=#) in the PEI OMA system for each measure. The number acknowledged (Ackn=#) for those with Pre and Post scores is an estimate based on the greatest number of matches that could be expected given the number of Pre scores acknowledged.

UCLA PTSD-RI - Parent	Total Pre 6428	Parent/care provider unavailable	Administration date exceeds acceptable range	Outcome measure unavailable	Parent/care provider refused	Invalid outcome measure	Other Reasons
	Percent	56.32%	14.17%	7.41%	6.80%	4.54%	10.77%
	n	3620	911	476	437	292	692
	Total Post 5555	Parent/care provider unavailable	Premature termination	Lost contact with parent/care provider	Parent/care provider refused	Administration date exceeds acceptable range	Other Reasons
	Percent	50.14%	20.23%	6.77%	6.03%	5.45%	11.38%
	n	2785	1124	376	335	303	632

UCLA PTSD-RI - Child/Adolescent	Total Pre 3775	Administration date exceeds acceptable range	Client refused	Client unavailable	Outcome measure unavailable	Clinician not trained in outcome measure	Other Reasons
	Percent	26.81%	23.18%	14.20%	12.74%	7.34%	15.74%
	n	1012	875	536	481	277	594
	Total Post 4966	Premature termination	Client unavailable	Client refused	Lost contact with client	Administration date exceeds acceptable range	Other Reasons
	Percent	28.45%	27.31%	13.55%	10.31%	7.99%	12.38%
	n	1413	1356	673	512	397	615

UCLA PTSD-RI - Adult	Total Pre 1288	Not available in primary language	Clinician not trained in outcome measure	Outcome measure unavailable	Client refused	Administration date exceeds acceptable range	Other Reasons
	Percent	34.32%	15.92%	15.06%	9.63%	9.47%	15.61%
	n	442	205	194	124	122	201
	Total Post 1414	Client unavailable	Not available in primary language	Lost contact with client	Premature termination	Client refused	Other Reasons
	Percent	20.16%	18.88%	18.25%	16.27%	11.24%	15.21%
	n	285	267	258	230	159	215

Table 5d. Top Reasons Given for "Unable to Collect"

<b>Youth Outcome Questionnaire - 2.01 (Parent)</b>	Total Pre 4908	Parent/care provider unavailable	Administration date exceeds acceptable range	Parent/care provider refused	Outcome measure unavailable	Clinician not trained in outcome measure	Other Reasons
	Percent	60.66%	16.65%	6.21%	5.77%	2.93%	7.78%
	n	2977	817	305	283	144	382
	Total Post 4886	Parent/care provider unavailable	Premature termination	Lost contact with parent/care provider	Administrati on date exceeds acceptable range	Parent/care provider refused	Other Reasons
	Percent	51.88%	21.67%	6.88%	5.89%	5.85%	7.82%
	n	2535	1059	336	288	286	382

Table 5e. Top Reasons Given for "Unable to Collect"

<b>Youth Outcome Questionnaire Self Report – 2.0 (YOQ-SR)</b>	Total Pre 2514	Administration date exceeds acceptable range	Client refused	Outcome measure unavailable	Client unavailable	Clinician not trained in outcome measure	Other Reasons
	Percent	34.01%	21.96%	12.81%	12.29%	6.01%	12.93%
	n	855	552	322	309	151	325
	Total Post 4250	Premature termination	Client unavailable	Client refused	Lost contact with client	Administration date exceeds acceptable range	Other Reasons
	Percent	31.81%	28.80%	11.55%	10.75%	8.05%	9.04%
	n	1352	1224	491	457	342	384

Table 5f. Top Reasons Given for "Unable to Collect"

<b>Outcome Questionnaire – 45.2</b>	Total Pre 950	Outcome measure unavailable	Administration date exceeds acceptable range	Not available in primary language	Client refused	Client unavailable	Other Reasons
	Percent	20.84%	17.89%	13.79%	11.68%	10.74%	25.05%
	n	198	170	131	111	102	238
	Total Post 1415	Client unavailable	Lost contact with client	Premature termination	Client refused	Not available in primary language	Other Reasons
	Percent	25.94%	21.91%	20.85%	11.94%	5.87%	13.50%
	n	367	310	295	169	83	191

Table 6. Service Delivery Data – Clients Who Completed Seeking Safety						
Total Treatment Cycles 4102	Average Length of Treatment in Weeks	Range of Treatment Weeks		Average Number of Sessions	Range of Sessions	
	33	Min 0	Max 209	36	Min 1	Max 745

<b>Table 7. Outcome Data<sup>±</sup> – Clients who Completed Seeking Safety</b>					
		<b>Percent Improvement from Pre to Post</b>	<b>Percent of Clients Showing Reliable Change* from Pre-SS to Post-SS</b>		
			<b>Positive Change</b>	<b>No change</b>	<b>Negative Change</b>
<b>UCLA PTSD-RI - Parent</b>	<b>TOTAL</b>	34.79% (n=551)	24.50%	70.60%	4.90%
			135	389	27
<b>UCLA PTSD-RI - Child/Adolescent</b>	<b>TOTAL</b>	29.04% (n=1216)	26.81%	66.78%	6.41%
			326	812	78
<b>UCLA PTSD-RI - Adult</b>	<b>TOTAL</b>	28.77% (n=361)	34.35%	62.88%	2.77%
			124	227	10
<b>Youth Outcome Questionnaire (YOQ) - 2.01 (Parent)</b>	<b>TOTAL</b>	35.68% (n=698)	56.16%	32.52%	11.32%
			392	227	79
<b>Youth Outcome Questionnaire - Self Report - 2.0 (YOQ-SR)</b>	<b>TOTAL</b>	31.66% (n=1492)	43.83%	45.71%	10.46%
			654	682	156
<b>Outcome Questionnaire – 45.2</b>	<b>TOTAL</b>	31.02% (n=565)	55.04%	40.00%	4.96%
			311	226	28

<sup>±</sup>Please see Appendix A. for a description of the Seeking Safety outcome measures and the outcome indicators (percent improvement in average scores; and, percent of clients showing reliable change).

Note1: Possible PTSD-RI range from 0-68, with a clinical cutpoint of 38.

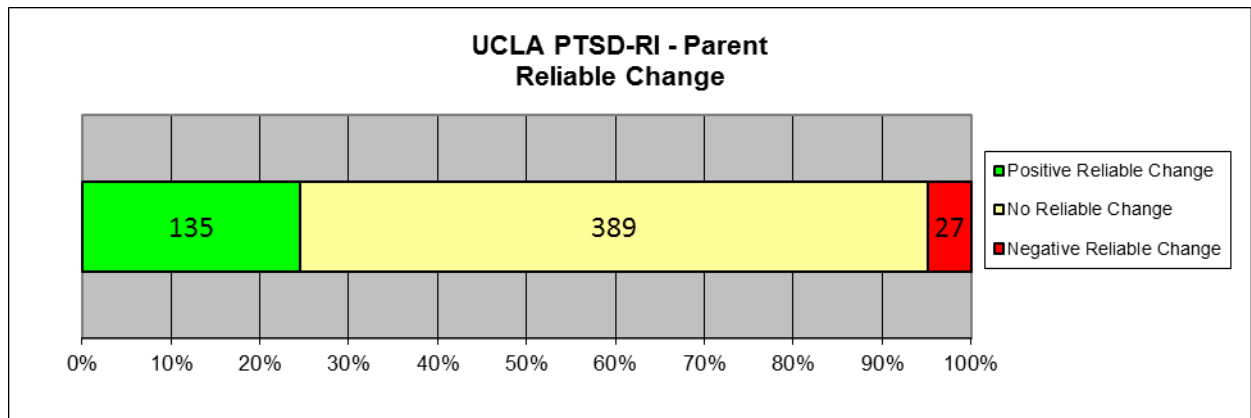
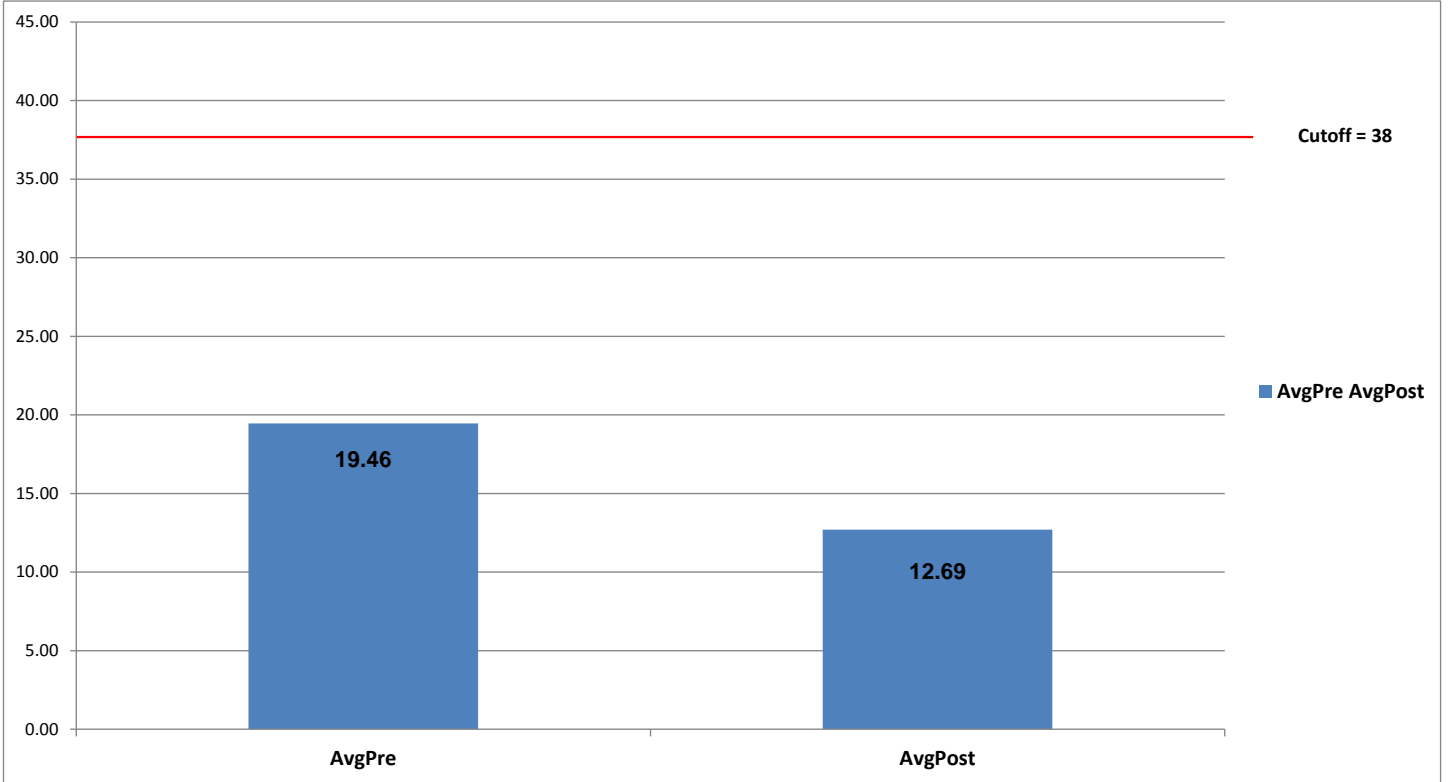
Note2: Possible YOQ Total Scores range from -16-240, with a clinical cutpoint of 46.

Note3: Possible YOQ-SR Total Scores range from -16-240, with a clinical cutpoint of 47.

Note4: Possible OQ Total Scores range from 0-180, with a clinical cutpoint of 64.

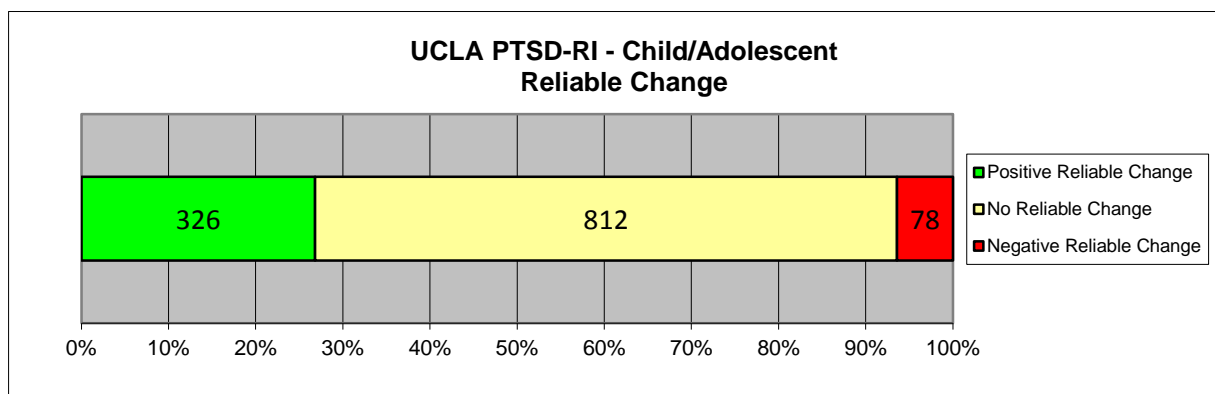
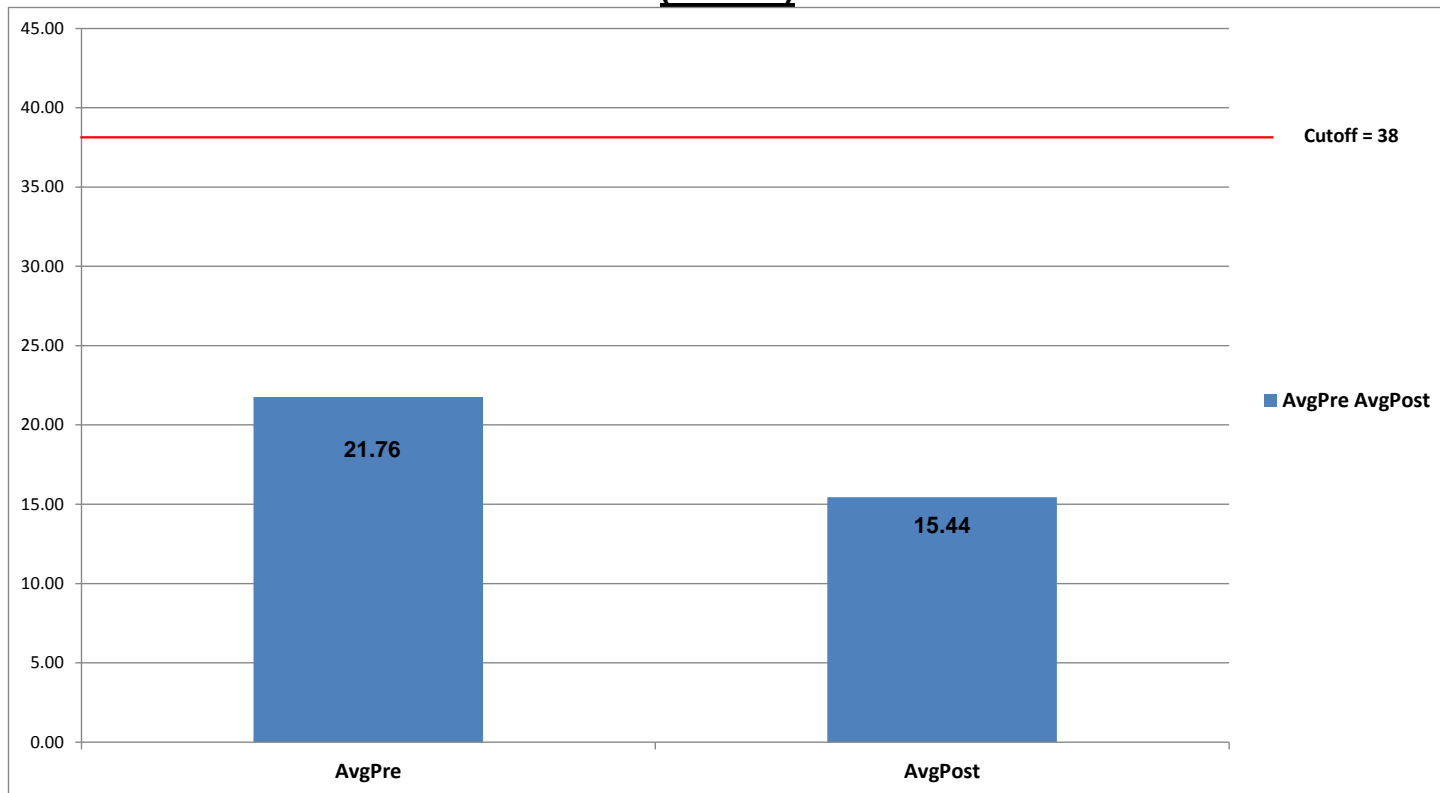
Note5: Positive Change indicates that the scores decreased from the pre to the post measures.

### UCLA PTSD RI – Parent (N=551)

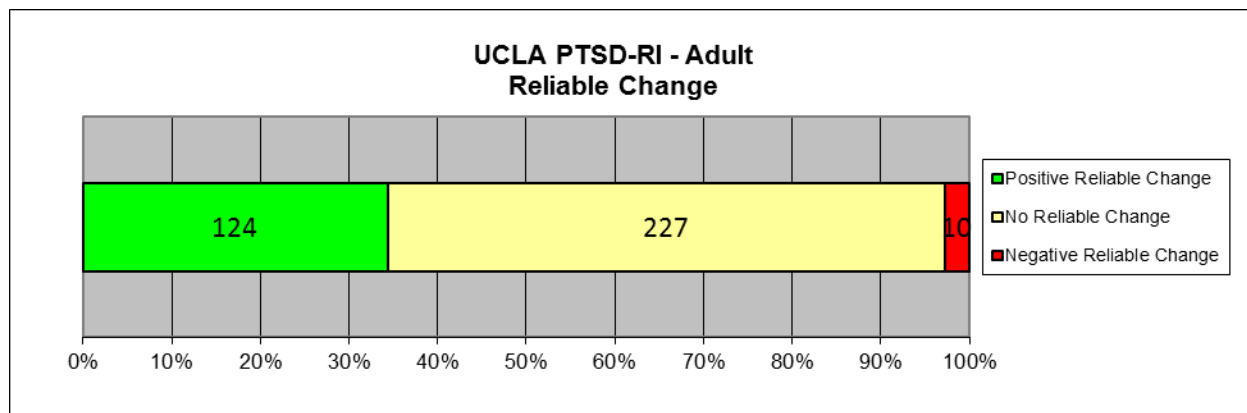
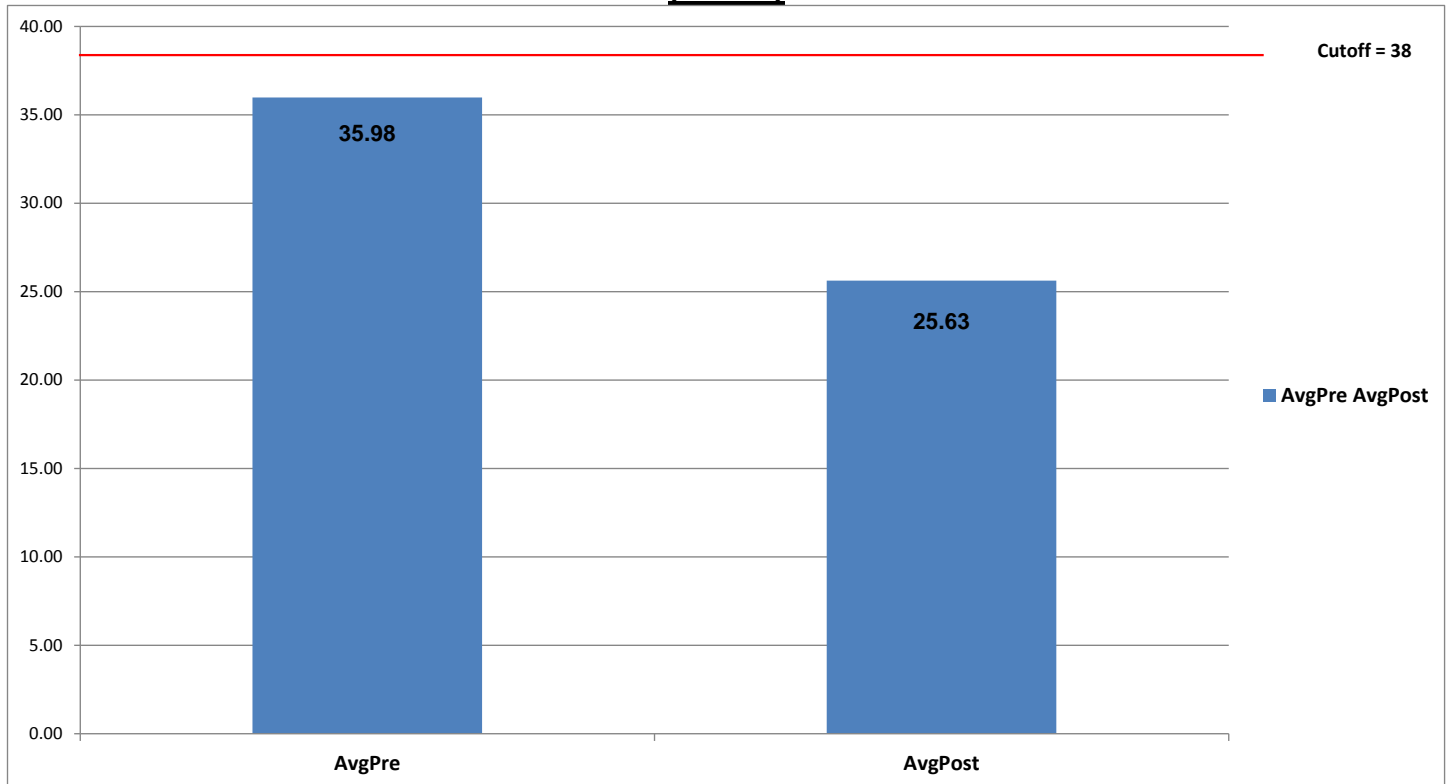




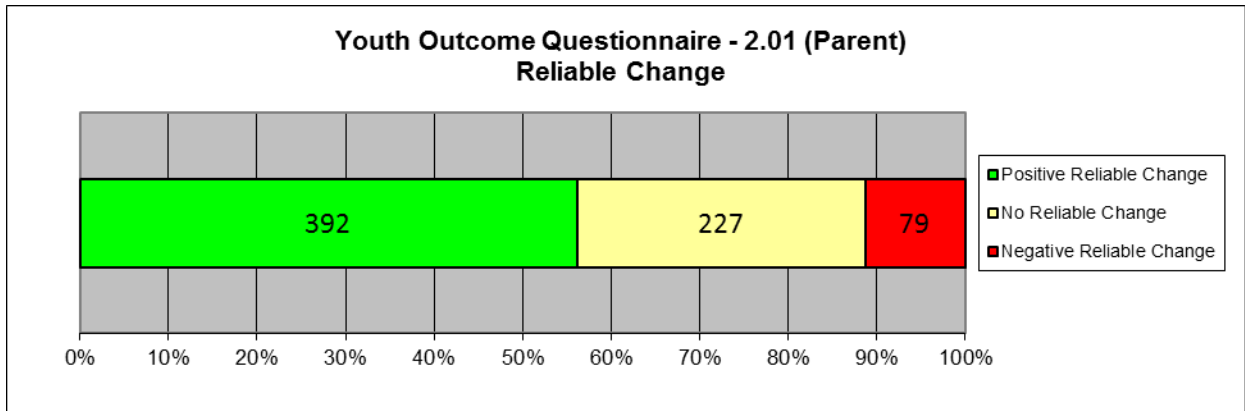
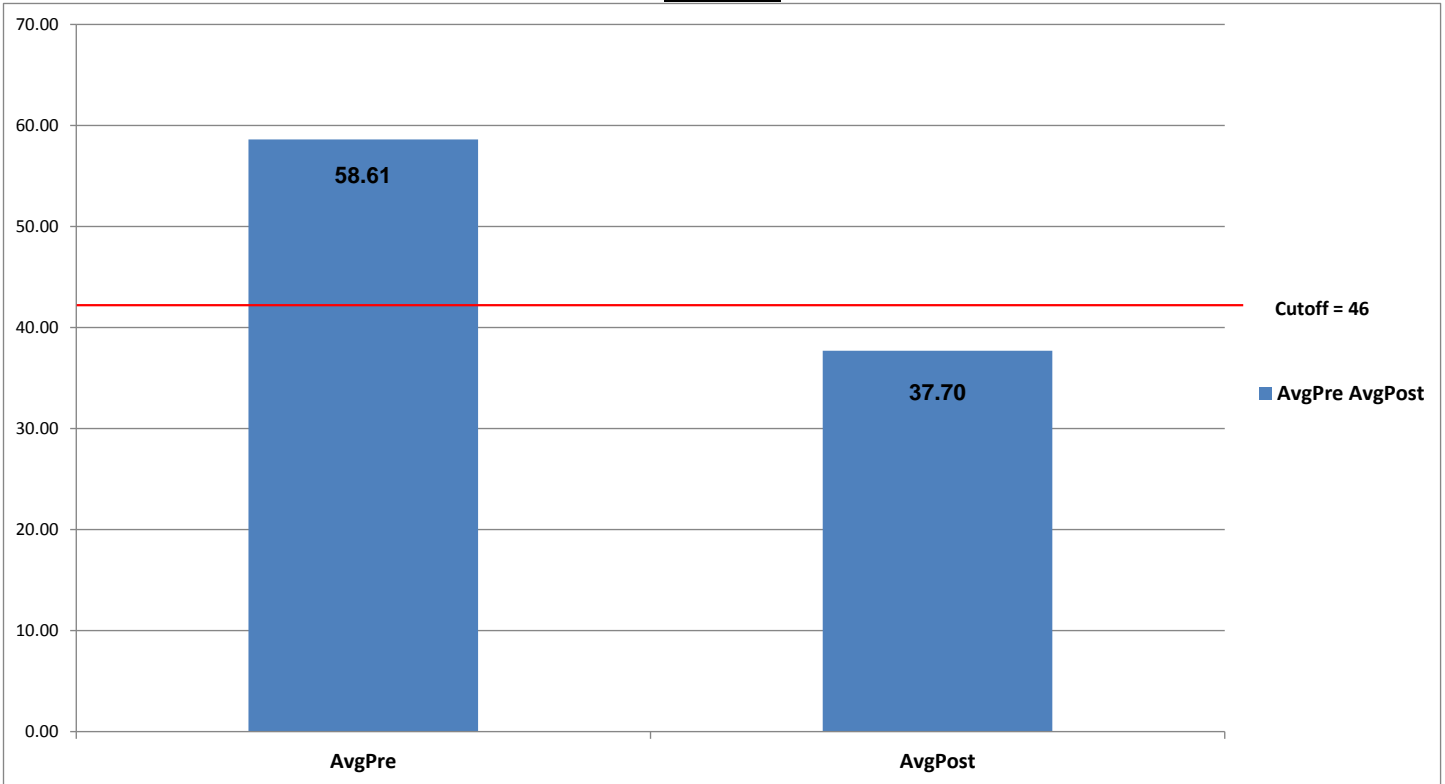
### UCLA PTSD RI – Child/Adolescent (N=1216)



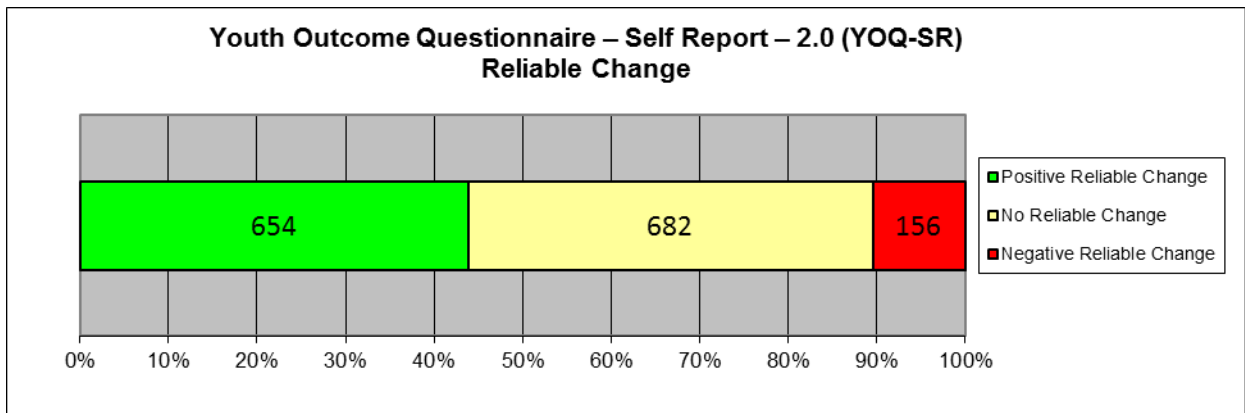
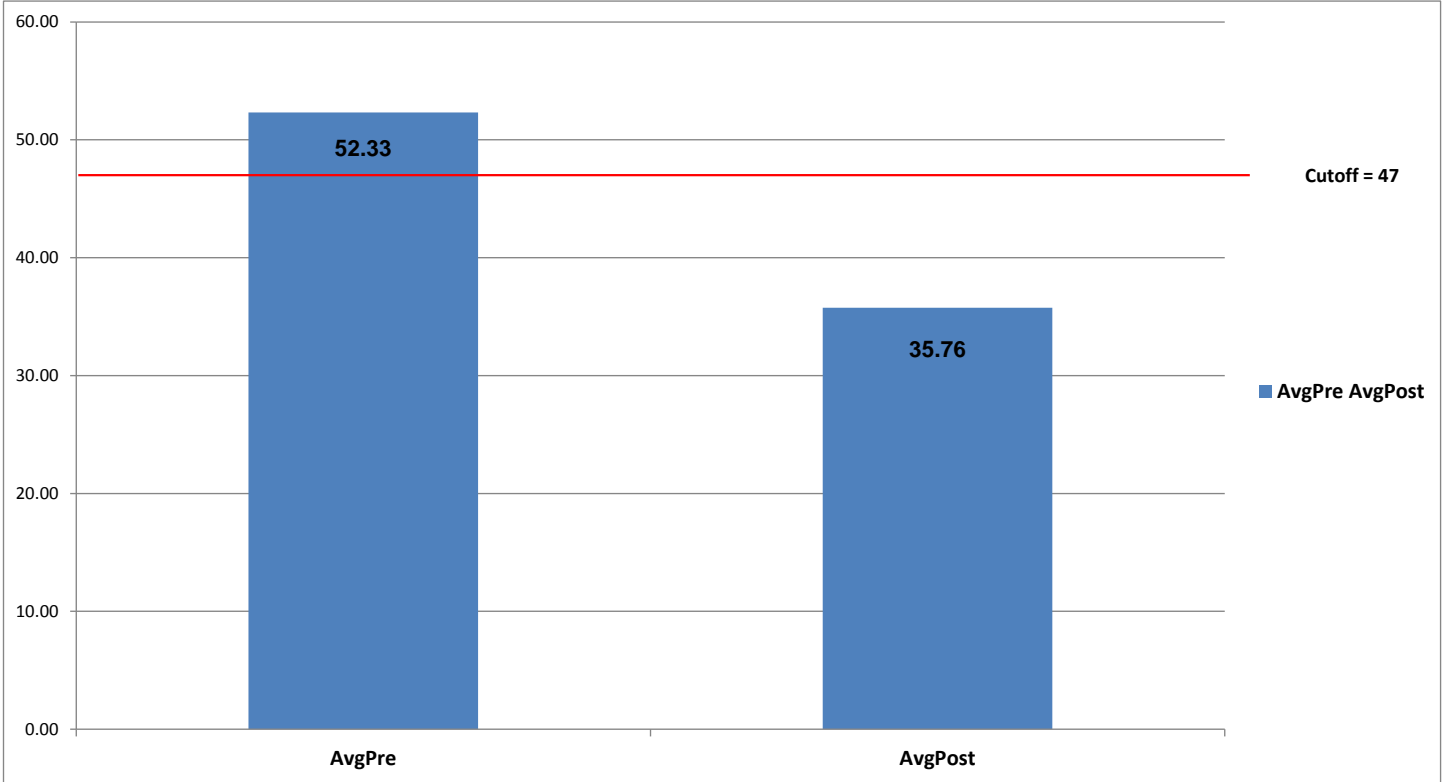
### UCLA PTSD-RI – Adult (N=361)



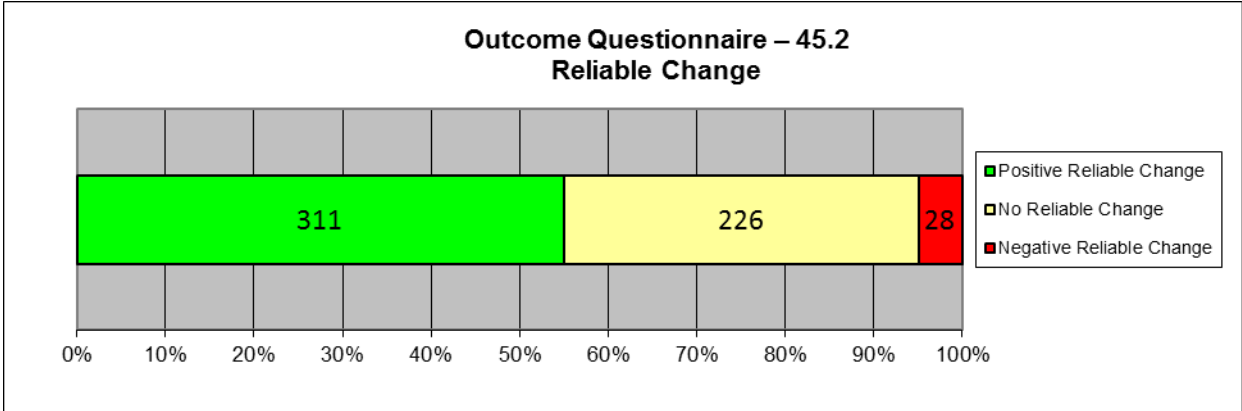
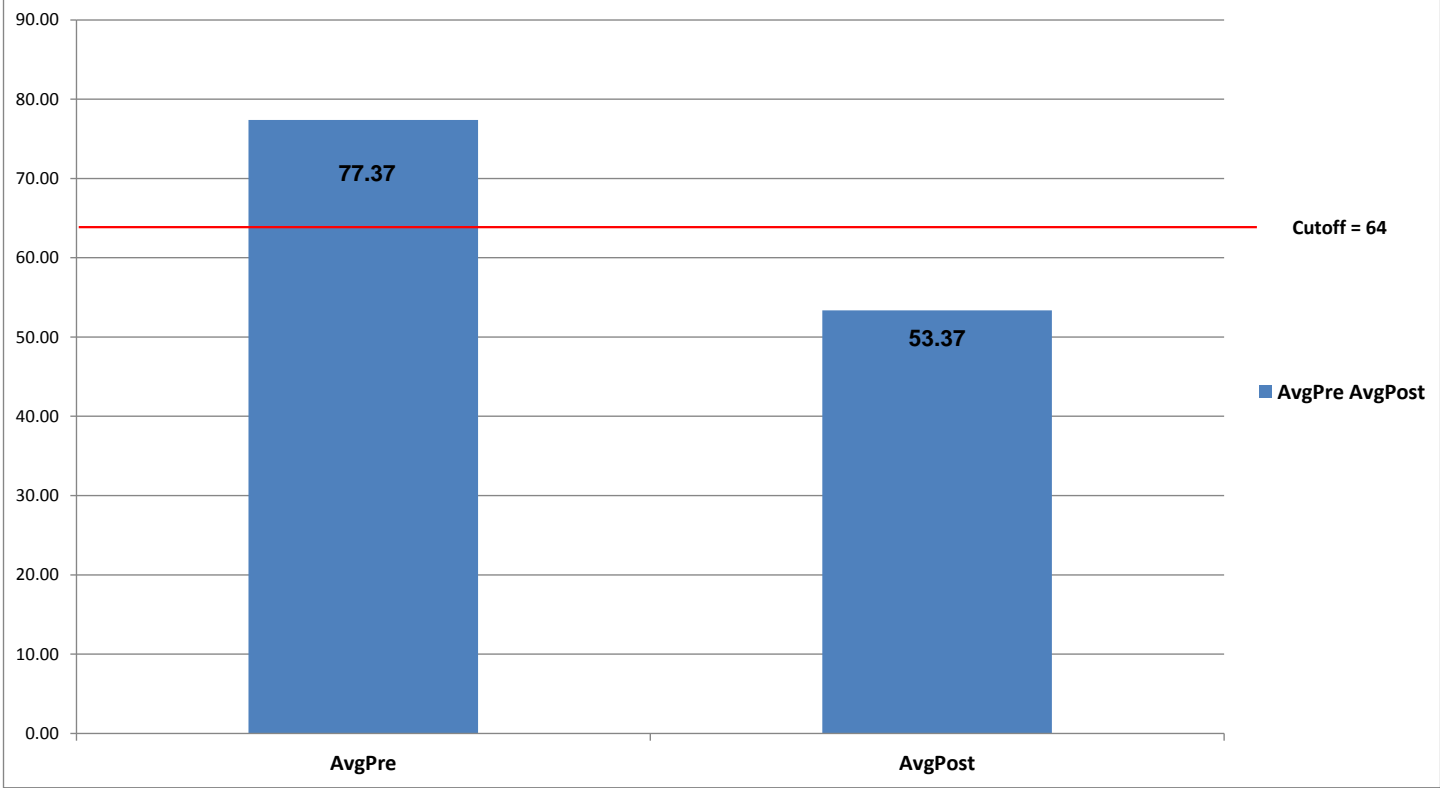
**Youth Outcome Questionnaire (YOQ) – 2.01 (Parent)**  
**(N=698)**



**Youth Outcome Questionnaire – Self Report – 2.0 (YOQ-SR)**  
**(N=1492)**



**Outcome Questionnaire-45.2**  
**(N=565)**



## Appendix

### Youth Outcomes Questionnaires (YOQ and YOQ-SR)

The Youth Outcome Questionnaire is a 64-item parent-report that assesses global distress in a child's/adolescent's life from 4-17 years of age. The YOQ-SR is the Self-report version of the YOQ and is completed by the child/adolescent. Total scores on both measures can range from -16 to 240. Total scores of 46 or higher are most similar to a clinical population on the YOQ. A total score of 47 is most similar to that of a clinical population on the YOQ-SR.

### Outcomes Questionnaires (OQ)

The Outcome Questionnaire is a 45-item self-report that assesses global distress in a client's life from ages 19 and older. Total Scores on this measure can range from 0 to 180, with scores of 64 or higher indicating clinical significance.

### Post-Traumatic Stress Disorder Reaction Index (PTSD-RI)

The UCLA Post-Traumatic Stress Disorder Reaction Index (PTSD-RI) is a brief (21 or 22-item measure depending on the version) that measures the frequency of occurrence of post-traumatic stress disorder symptoms during the month prior to the assessment. The Child/Adolescent Version is appropriate for clients age 6-20. The Parent Version is appropriate for clients age 3-18. The Adult Short-form is appropriate for clients age 21+.

Possible Total PTSD Severity Scores range from 0-68; and scores of 38 or higher have the greatest sensitivity and specificity for detecting PTSD.

### Reliable Change Index (RCI)

When comparing Pre and Post scores, it is very helpful to know whether the change reported represents the real effects of the treatment or errors in the system of measurement. The Reliability of Change Index (RCI) is a statistical way of helping to insure that the change recorded between pre and post assessments exceeds that which would be expected on the basis of measurement error alone. The RCI has been calculated using the Jacobson and Truax (1991) method and indicates when change exceeds that which would be expected on the basis of error at the  $p < .05$  probability level. For a more in-depth discussion of Reliability of Change see Jacobson, N. S., & Truax, P. (1991). Clinical Significance: A statistical approach to defining meaningful change in psychotherapy research. *Journal of Consulting and Clinical Psychology*, 59, 12-19. Also see Wise, E. A. (2004). Methods for analyzing psychotherapy outcomes: A review of clinical significance, reliable change, and recommendations for future directions. *Journal of Personality Assessment*, 82(1), 50-59.

The number and percent of clients experiencing positive change, no change and negative change are recorded in table 7. Healthful change in each of the measures cited here means that scores have decreased in value from pre to post test administrations (i.e. recorded a negative change on the RCI). To help avoid confusion, healthful reliable change is presented as positive while unhealthful reliable change is presented as negative change.

The Reliable Change analysis for the PTSD-RI Adult Short-Form used the same Cronbach Alpha score found in the other PTSD-RI versions.

### Supplemental Information for Table 3 “Other” Diagnosis Category

DSM-IV Primary Axis Diagnosis - Clients Who Entered Seeking Safety	n	Percent
Disruptive Behavior Disorder NOS	899	11.31%
Major Depressive Disorder, Recurrent, Moderate	761	9.57%
Conduct Disorder, Adolescent-Onset Type	654	8.23%
Major Depressive Disorder, Rec., Severe W/O Psychotic Features	464	5.84%
Attention-Deficit/Hyperactivity Disorder, Combined Type or Hyperactive Impulse Type	459	5.77%
Generalized Anxiety Disorder	401	5.04%
Anxiety Disorder NOS	386	4.86%
Major Depressive Disorder, Single Episode, Moderate	337	4.24%
Bipolar Disorder NOS	276	3.47%
Major Depressive Disorder, Recurrent, Unspecified	211	2.65%
Major Depressive Disorder, Rec., Severe With Psychotic Features	206	2.59%
Adjustment Disorder With Anxiety and Depressed Mood	196	2.47%
Major Depressive Disorder, Single Episode, Unspecified	185	2.33%
Adjustment Disorder With Depressed Mood	168	2.11%
Major Depressive Disorder, Recurrent, Mild	168	2.11%
Major Depressive Disorder, SE, Severe W/O Psychotic Features	153	1.92%
Major Depressive Disorder, Single Episode, Mild	141	1.77%
Psychotic Disorder NOS	125	1.57%
Attention-Deficit/Hyperactivity Disorder, Predominantly Inattentive Type	114	1.43%
Adjustment Disorder W/Mixed Disturbance Emotion and Conduct	112	1.41%
Conduct Disorder, Childhood-Onset Type	109	1.37%
Schizoaffective Disorder	109	1.37%
Major Depressive Disorder, SE, Severe With Psychotic Features	88	1.11%
Attention-Deficit/Hyperactivity Disorder NOS	78	0.98%
Schizophrenia, Paranoid Type	69	0.87%
Adjustment Disorder Unspecified	67	0.84%
Bipolar II Disorder	65	0.82%
Panic Disorder Without Agoraphobia	63	0.79%
Adjustment Disorder With Anxiety	61	0.77%
Adjustment Disorder With Disturbance of Conduct	49	0.62%
Bipolar I Disorder, MRE, Depressed, Unspecified	39	0.49%
Conduct Disorder, Unspecified Onset	36	0.45%
Intermittent Explosive Disorder	34	0.43%
Bipolar I Disorder, MRE, Depressed, Severe W/O Psychotic Features	33	0.42%
Bipolar I Disorder, MRE, Depressed, Severe With Psychotic Features	33	0.42%
Panic Disorder With Agoraphobia	30	0.38%
Diagnosis Deferred (code invalid as Secondary/Axis II Diagnosis)	29	0.36%
Major Depressive Disorder, Recurrent, In Partial Remission	26	0.33%
Social Phobia	25	0.31%

<b>DSM-IV Primary Axis Diagnosis - Clients Who Entered Seeking Safety</b>	<b>n</b>	<b>Percent</b>
Bipolar I Disorder, MRE, Mixed, Unspecified	24	0.30%
Bipolar I Disorder, MRE, Mixed, Moderate	24	0.30%
Bipolar I Disorder, MRE, Depressed, Moderate	24	0.30%
Bipolar I Disorder, MRE, Mixed, Severe W/O Psychotic Features	22	0.28%
Obsessive-Compulsive Disorder	22	0.28%
Bipolar I Disorder, MRE, Hypomanic/Manic Unspecified	20	0.25%
Bipolar I Disorder, MRE, Mixed, Severe With Psychotic Features	20	0.25%
No Diagnosis (code invalid as Secondary/Axis III Diagnosis)	20	0.25%
Bipolar I Disorder, MRE, Manic, Severe With Psychotic Features	20	0.25%
Bipolar I Disorder, MRE, Manic, Moderate	16	0.20%
Bipolar I Disorder, MRE, Depressed, Mild	14	0.18%
Mood Disorder Due to ...(Indicate Medical Condition)	14	0.18%
Schizophrenia, Undifferentiated Type	13	0.16%
Bipolar I Disorder, MRE, Manic, Severe W/O Psychotic Features	13	0.16%
Bipolar I Disorder, MRE, Unspecified	13	0.16%
Cyclothymic Disorder	12	0.15%
Acute Stress Disorder	12	0.15%
Reactive Attachment Disorder of Infancy or Early Childhood	11	0.14%
Cannabis Abuse	11	0.14%
Schizophrenia, Disorganized Type	11	0.14%
Impulse-Control Disorder NOS	10	0.13%
Major Depressive Disorder, Single Episode, In Partial Remission	9	0.11%
Separation Anxiety Disorder	9	0.11%
Disorder of Infancy, Childhood, or Adolescence NOS	7	0.09%
Pervasive Developmental Disorder NOS/Asperger's Disorder/Rett's Disorder	7	0.09%
Major Depressive Disorder, Recurrent, In Full Remission	6	0.08%
Eating Disorder NOS	6	0.08%
Bipolar I Disorder, Single Manic Episode, Unspecified	6	0.08%
Bereavement	5	0.06%
Delusional Disorder	5	0.06%
Amphetamine Dependence	5	0.06%
Polysubstance Dependence	4	0.05%
Drug Induced Mood Disorder	4	0.05%
Bipolar I Disorder, MRE, Depressed, In Partial Remission	4	0.05%
Bipolar I Disorder, MRE, Mixed, Mild	4	0.05%
Drug Induced Psychotic Disorder, With Delusions	3	0.04%
Alcohol-Induced Anxiety. Mood, Sleep Disorders/Sexual Dysfunction	3	0.04%
Gender Identity Disorder in Adolescents or Adults	3	0.04%
Drug Induced Psychotic Disorder, With Hallucinations	3	0.04%
Anxiety Disorder Due to General Medical Condition	2	0.03%
Schizophreniform Disorder	2	0.03%
Trichotillomania	2	0.03%
Bipolar I Disorder, MRE Manic, In Full Remission	2	0.03%



<b>DSM-IV Primary Axis Diagnosis - Clients Who Entered Seeking Safety</b>	<b>n</b>	<b>Percent</b>
Major Depressive Disorder, Single Episode, In Full Remission	2	0.03%
Anorexia Nervosa	2	0.03%
Religious or Spiritual Problem/Phase of Life Problem	2	0.03%
Bipolar I Disorder, MRE, Manic, In Partial Remission	2	0.03%
Somatoform Disorder NOS and Undifferentiated Somatoform Disorder	2	0.03%
Bulemia Nervosa	2	0.03%
Schizophrenia, Residual Type	2	0.03%
Bipolar I Disorder, Single Manic Episode, Moderate	2	0.03%
Bipolar I, SME, Severe With Psychotic Features	2	0.03%
Bipolar I, SME, Severe W/O Psychotic Features	2	0.03%
Agoraphobia Without History of Panic Disorder	2	0.03%
Opioid Dependence	2	0.03%
Pain Disorder Associated w/Psychological and Medical	1	0.01%
Conversion Disorder	1	0.01%
Adult Antisocial Behavior	1	0.01%
Parent-Child Relational Problem	1	0.01%
Catatonic Disorder Due to General Medical Condition	1	0.01%
Drug Induced Disorder NEC	1	0.01%
Drug Related Disorder NOS	1	0.01%
Dyspareunia (Not Due to a Medical Condition)	1	0.01%
Frotteurism	1	0.01%
Cannabis Dependence	1	0.01%
Brief Psychotic Disorder	1	0.01%
Dissociative Identity Disorder	1	0.01%
Unspecified Mental Disorder (Nonpsychotic)	1	0.01%
NULL	1	0.01%
Identity Problem	1	0.01%
Drug Induced Delirium	1	0.01%
Dementia due to Medical Disorder/HIV Disease	1	0.01%
Psychotic Disorder Due to ...(Indicate Medical Condition) with Delusions	1	0.01%
Bipolar I Disorder, MRE, Depressed, In Full Remission	1	0.01%
Alcohol Dependence	1	0.01%
<b>Total</b>	<b>7950</b>	<b>100.00%</b>