

**COUNTY OF LOS ANGELES – DEPARTMENT OF MENTAL HEALTH  
PROGRAM SUPPORT BUREAU – MHSA IMPLEMENTATION AND OUTCOMES DIVISION**



**Prevention & Early Intervention: Seeking Safety  
Countywide Aggregate Practice Outcomes Dashboard Report**

**Outcome Data Submission January 9, 2014**

**Participating Legal Entities Include:**

ALCOTT CENTER FOR MENTAL HEALTH SERVICES	HERITAGE CLINIC	TESSIE CLEVELAND COMM SERVICES
ASSOCIATED LEAGUE OF MEXICAN AMERICANS	HILLSIDES	THE GUIDANCE CENTER
AVIVA CENTER	HILLVIEW MHC, INC.	THE HELP GROUP CHILD AND FAMILY CENTER
BARBOUR AND FLOYD ASSOCIATES	INSTITUTE FOR MULTI CULTURAL COUNSELING	TOBINWORLD
BRIDGES, INC.	INTERCOMMUNITY CHILD GUIDANCE CENTER	TRINITY YOUTH SERVICES
CALIFORNIA HISPANIC COMMISSION ALCOHOL & DRUG ABUSE	JEWISH FAMILY SERVICE OF LA	UNITED AMERICAN INDIAN INVOLVEMENT
CHILD AND FAMILY CENTER	LEROY HAYNES FOUNDATION, INC.	VIP MENTAL HEALTH CENTER, INC.
CHILDREACH	LOS ANGELES CHILD GUIDANCE	VISTA DEL MAR CHILD AND FAMILY SERVICES
CHILDRENS HOSPITAL OF LOS ANGELES	MENTAL HEALTH AMERICA OF LA	WRAP FAMILY SERVICES
COMMUNITY COUNSELING SERVICES	OPTIMIST YOUTH HOMES	<b>L.A. COUNTY DMH</b>
COUNSELING AND RESEARCH ASSC, INC.	PACIFIC CLINICS	AMERICAN INDIAN COUNSELING CENTER
CRITTENTON SERVICES FOR CHILD AND FAMILY	PACIFIC LODGE YOUTH SERVICES	ARCADIA MHS
D VEAL FAMILY AND YOUTH SERVICES	PASADENA UNIFIED SCHOOL DISTRICT	COASTAL API FAMILY MHC
DAVID AND MARGARET HOME INC.	PENNY LANE CENTERS	COMPTON FAMILY MHS
DIDI HIRSCH PSYCHIATRIC SERVICE	PHOENIX HOUSE OF LOS ANGELES, INC.	DOWNTOWN MHC
DREW CHILD DEVELOPMENT CORPORATION	ROSEMARY CHILDRENS SERVICE	EDMUND D. EDELMAN WESTSIDE MHC
EISNER PEDIATRIC FAMILY CENTER	SAN FERNANDO VALLEY CHILD GUIDANCE	HARBOR-UCLA MEDICAL CENTER
EL CENTRO DE AMISTAD, INC.	SAN FERNANDO VALLEY COMMUNITY MHC	JUVENILE JUSTICE TRANSITION AFTERCARE SVCS
EL CENTRO DEL PUEBLO, INC.	SAN GABRIEL CHILDRENS CENTER INC.	LONG BEACH API FAMILY MHC
ENKI HEALTH AND RESEARCH SYSTEMS, INC.	SHIELDS FOR FAMILIES	LONG BEACH CHILD & ADOLESCENT CLINIC
ETTIE LEE HOMES, INC.	SOUTH CENTRAL HEALTH AND REHAB PROGRAM	LONG BEACH MHS ADULT CLINIC
EXCEPTIONAL CHILDRENS FOUNDATION	SPECIAL SERVICE FOR GROUPS	NORTHEAST MENTAL HEALTH CENTER
FAMILIES FIRST, INC.	SPIRITT FAMILY SERVICES	RIO HONDO COMMUNITY MHC
FIVE ACRES	ST. JOHNS HOSPITAL CHILD STUDY CTR	SAN PEDRO MENTAL HEALTH SERVICES
FOOTHILL FAMILY SERVICES	ST. JOSEPH CENTER	SOUTH BAY MHS
HATHAWAY SYCAMORES CHILD FAMILY SERVICES	TARZANA TREATMENT CENTERS INC.	WEST CENTRAL FAMILY MHS
HELPLINE YOUTH COUNSELING, INC.	TELECARE CORPORATION	

**Agencies submitting outcomes that are not approved to provide Seeking Safety by PEI Administration:**

ASIAN AMERICAN DRUG ABUSE PROGRAM	L.A. COUNTY DMH
MCKINLEY CHILDREN'S CENTER	ANTELOPE VALLEY MHS
VENICE FAMILY CLINIC	HOLLYWOOD MHC

# of Clients Claimed to Practice	# of Clients entered into PEI OMA	# of Tx cycles in PEI OMA	Clients with Multiple Tx Cycles	Clients Completing Tx	Clients Dropping-Out of Tx
18747	40.99%	8131	5.36%	22.59%	34.68%
n=	7684	n=	412	1837	2820

Note 1: Clients claimed was based on Seeking Safety being selected as the EBP in a PEI Plan and having  $\geq 1$  core services claimed to the practice.

Note 2: Number of clients Completing Tx or Dropping-Out of Tx was determined by whether the EBP was said to be completed (e.g. answered “yes” or “no”) in the PEI OMA.

Total Number of Clients	Age	Gender			Ethnicity					Primary Language		
	Average	Female	Male	Unknown	African-American	Asian / Pacific Islander	Caucasian	Hispanic / Latino	Other	English	Spanish	Other
7684	22	48.66%	51.28%	0.07%	21.40%	2.69%	11.40%	59.72%	4.79%	76.69%	20.20%	3.11%
n=		3739	3940	5	1644	207	876	4589	368	5893	1552	239

Note1: Age is calculated at the date of the first EBP.

Note2: Percentages may not total 100 due to missing data and/or rounding.

Total Treatment Cycles	Depressive Disorder NOS	Post-Traumatic Stress Disorder	Oppositional Defiant Disorder	Mood Disorder NOS	Dysthymic Disorder	Other
8131	10.21%	9.61%	9.31%	8.67%	6.79%	55.42%
n=	830	781	757	705	552	4506

\*See breakout of “Other” on the supplemental information page.

Table 4: Program Process Data - Clients Who Entered Seeking Safety			
Outcome Measures Administered	Pre-Test with Scores	Post-test with Scores	Clients Who Completed both a Pre and Post Measure with Scores
UCLA PTSD-RI - Parent	35.27%	17.90%	6.89%
	n= 1867	527	365
	Ackn= 5294	2944	5294
UCLA PTSD-RI - Child/Adolescent	64.92%	30.51%	12.78%
	n= 3712	955	731
	Ackn= 5718	3130	5718
UCLA PTSD-RI - Adult	64.73%	28.31%	9.62%
	n= 1191	220	177
	Ackn= 1840	777	1840
Youth Outcome Questionnaire - 2.01 (Parent)	46.60%	23.51%	9.31%
	n= 2372	658	474
	Ackn= 5090	2799	5090
Youth Outcome Questionnaire – Self Report – 2.0 (YOQ-SR)	74.64%	37.04%	15.70%
	n= 4065	1085	855
	Ackn= 5446	2929	5446
Outcome Questionnaire - 45.2	74.58%	36.49%	11.20%
	n= 1684	331	253
	Ackn= 2258	907	2258

Note 1: Number of acknowledged measures (Ackn=) is determined by the number of required measures that receive a score or an unable to collect reason code.

Note 2: The % indicated for Pre-test with scores, Post-test with scores, and both a Pre- and Post-test with scores is calculated by dividing the (n=#) by the number acknowledged (Ackn=#) in the PEI OMA system for each measure. The number acknowledged (Ackn=#) for those with Pre and Post scores is an estimate based on the greatest number of matches that could be expected given the number of Pre scores acknowledged.

UCLA PTSD-RI - Parent	Total Pre 3428		Parent/care provider unavailable	Administration date exceeds acceptable range	Outcome measure unavailable	Clinician not trained in outcome measure	Parent/care provider refused	Other Reasons
		percent	55.60%	13.59%	11.11%	6.45%	5.66%	7.58%
		n	1906	466	381	221	194	260
	Total Post 2417		Parent/care provider unavailable	Premature termination	Outcome measure unavailable	Parent/care provider refused	Lost contact with parent/care provider	Other Reasons
		percent	51.68%	20.15%	6.16%	5.79%	5.59%	10.63%
		n	1249	487	149	140	135	257

UCLA PTSD-RI - Child/Adolescent	Total Pre 2006		Administration date exceeds acceptable range	Client refused	Outcome measure unavailable	Client unavailable	Clinician not trained in outcome measure	Other Reasons
		percent	26.52%	19.59%	18.39%	13.31%	11.81%	10.37%
		n	532	393	369	267	237	208
	Total Post 2175		Client unavailable	Premature termination	Client refused	Lost contact with client	Outcome measure unavailable	Other Reasons
		percent	32.32%	26.99%	11.03%	9.84%	6.62%	13.20%
		n	703	587	240	214	144	287

UCLA PTSD-RI - Adult	Total Pre 649		Not available in primary language	Outcome measure unavailable	Clinician not trained in outcome measure	Client refused	Administration date exceeds acceptable range	Other Reasons
		percent	34.98%	18.80%	16.49%	9.86%	8.47%	11.40%
		n	227	122	107	64	55	74
	Total Post 557		Lost contact with client	Premature termination	Client unavailable	Not available in primary language	Client refused	Other Reasons
		percent	20.83%	18.13%	17.59%	17.24%	13.46%	12.75%
		n	116	101	98	96	75	71

Youth Outcome Questionnaire - 2.01 (Parent)	Total Pre 2718		Parent/care provider unavailable	Administration date exceeds acceptable range	Outcome measure unavailable	Parent/care provider refused	Clinician not trained in outcome measure	Other Reasons
		percent	58.98%	17.03%	8.39%	5.48%	4.67%	5.45%
		n	1603	463	228	149	127	148
	Total Post 2141		Parent/care provider unavailable	Premature termination	Lost contact with parent/care provider	Parent/care provider refused	Outcome measure unavailable	Other Reasons
		percent	54.32%	21.86%	5.70%	5.56%	4.20%	8.36%
		n	1163	468	122	119	90	179

Youth Outcome Questionnaire Self Report - 2.0 (YOQ-SR)	Total Pre 1381		Administration date exceeds acceptable range	Client refused	Outcome measure unavailable	Clinician not trained in outcome measure	Client unavailable	Other Reasons
		percent	35.48%	20.13%	17.60%	9.78%	8.98%	8.04%
		n	490	278	243	135	124	111
	Total Post 1844		Client unavailable	Premature termination	Lost contact with client	Client refused	Outcome measure unavailable	Other Reasons
		percent	34.54%	30.15%	10.47%	9.06%	5.37%	10.41%
		n	637	556	193	167	99	192

Outcome Questionnaire - 45.2	Total Pre 574		Outcome measure unavailable	Not available in primary language	Clinician not trained in outcome measure	Administration date exceeds acceptable range	Client unavailable	Other Reasons
		percent	27.70%	18.12%	15.33%	13.76%	7.84%	17.25%
		n	159	104	88	79	45	99
	Total Post 576		Lost contact with client	Client unavailable	Premature termination	Client refused	Not available in primary language	Other Reasons
		percent	23.44%	22.40%	22.22%	14.06%	6.42%	11.46%
		n	135	129	128	81	37	66

Total Treatment Cycles 1837	Average Length of Treatment in Weeks	Range of Treatment Weeks		Average Number of Sessions	Range of Sessions	
	31	Min 0	Max 127	35	Min 1	Max 334

		Percent Improvement from Pre to Post	Percent of Clients Showing Reliable Change* from Pre-SS to Post-SS		
			Positive Change	No change	Negative Change
UCLA PTSD-RI - Parent	TOTAL	34.98%	23.48%	71.26%	5.26%
		(n=247)	58	176	13
UCLA PTSD-RI - Child/Adolescent	TOTAL	28.53%	26.59%	68.02%	5.39%
		(n=519)	138	353	28
UCLA PTSD-RI - Adult	TOTAL	25.96%	29.86%	65.97%	4.17%
		(n=144)	43	95	6
Youth Outcome Questionnaire (YOQ) - 2.01 (Parent)	TOTAL	31.60%	51.75%	33.97%	14.29%
		(n=315)	163	107	45
Youth Outcome Questionnaire - Self Report - 2.0 (YOQ-SR)	TOTAL	31.41%	43.93%	47.04%	9.03%
		(n=642)	282	302	58
Outcome Questionnaire – 45.2	TOTAL	24.08%	45.71%	47.62%	6.67%
		(n=210)	96	100	14

\*Please see Appendix A. for a description of the Seeking Safety outcome measures and the outcome indicators (percent improvement in average scores; and, percent of clients showing reliable change).

Note1: Possible PTSD-RI range from 0-68, with a clinical cutpoint of 38.

Note2: Possible YOQ Total Scores range from -16-240, with a clinical cutpoint of 46.

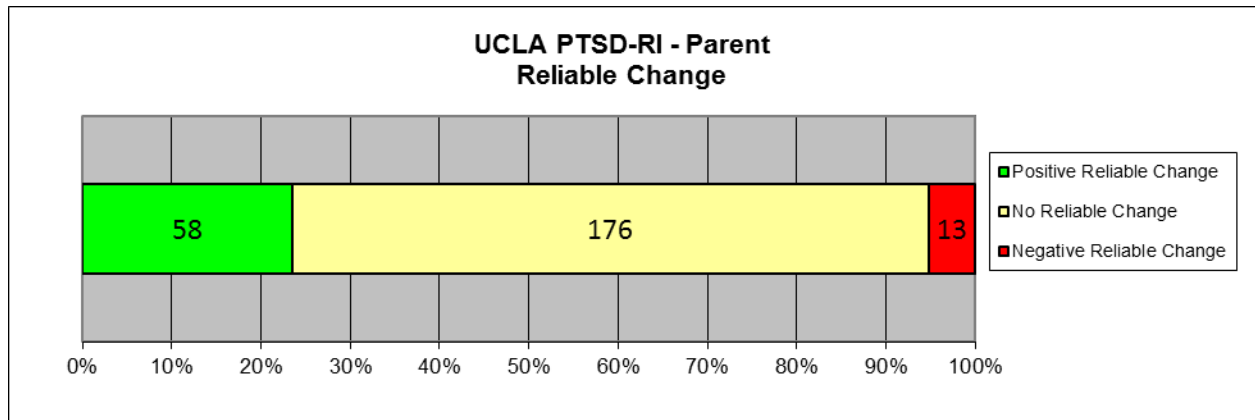
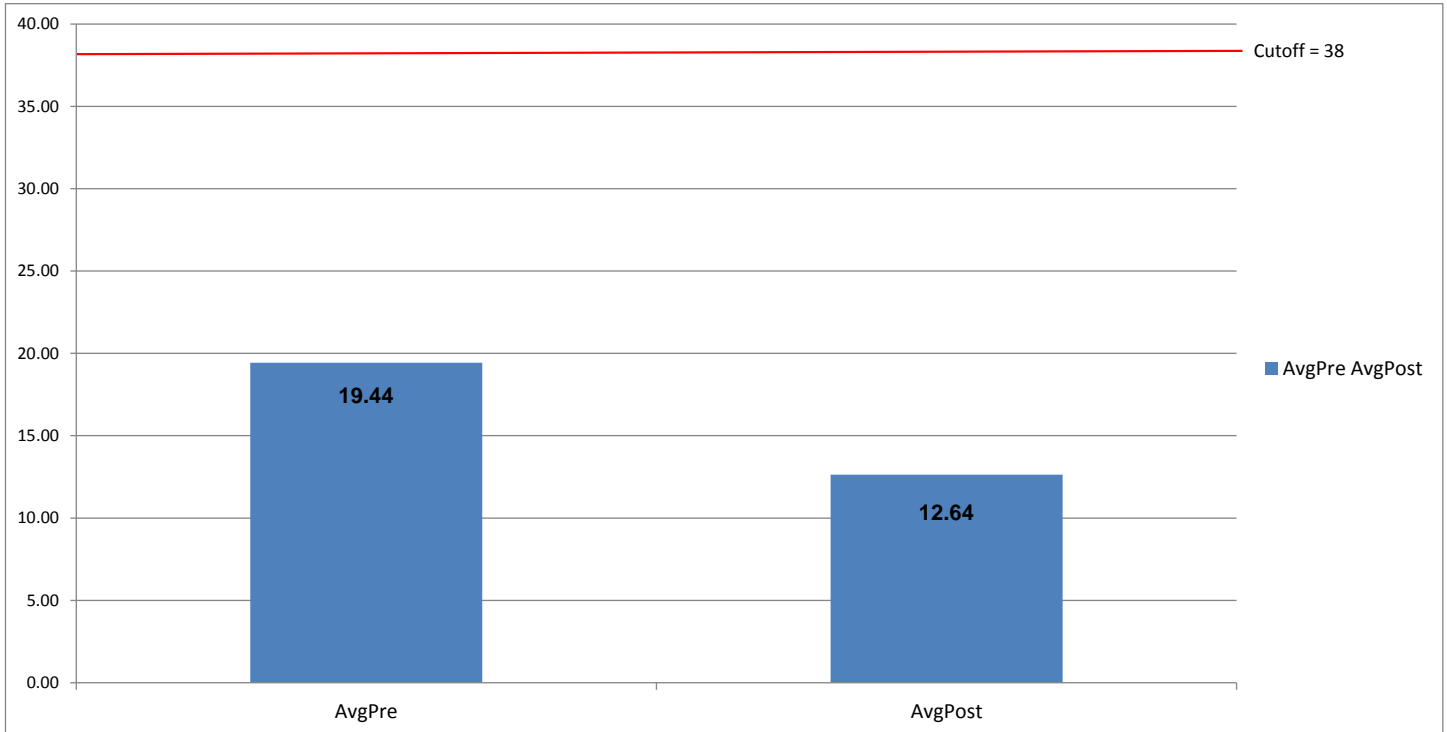
Note3: Possible YOQ-SR Total Scores range from -16-240, with a clinical cutpoint of 47.

Note4: Possible OQ Total Scores range from 0-180, with a clinical cutpoint of 64.

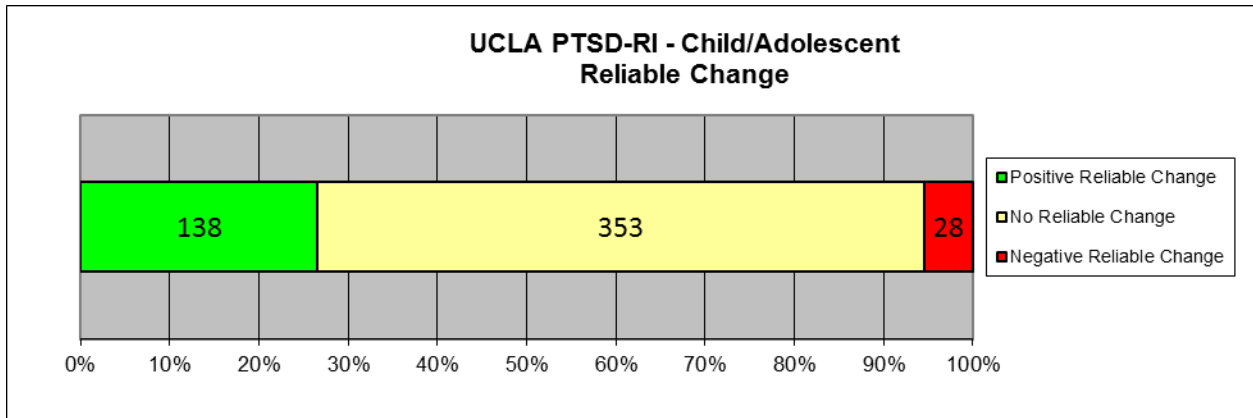
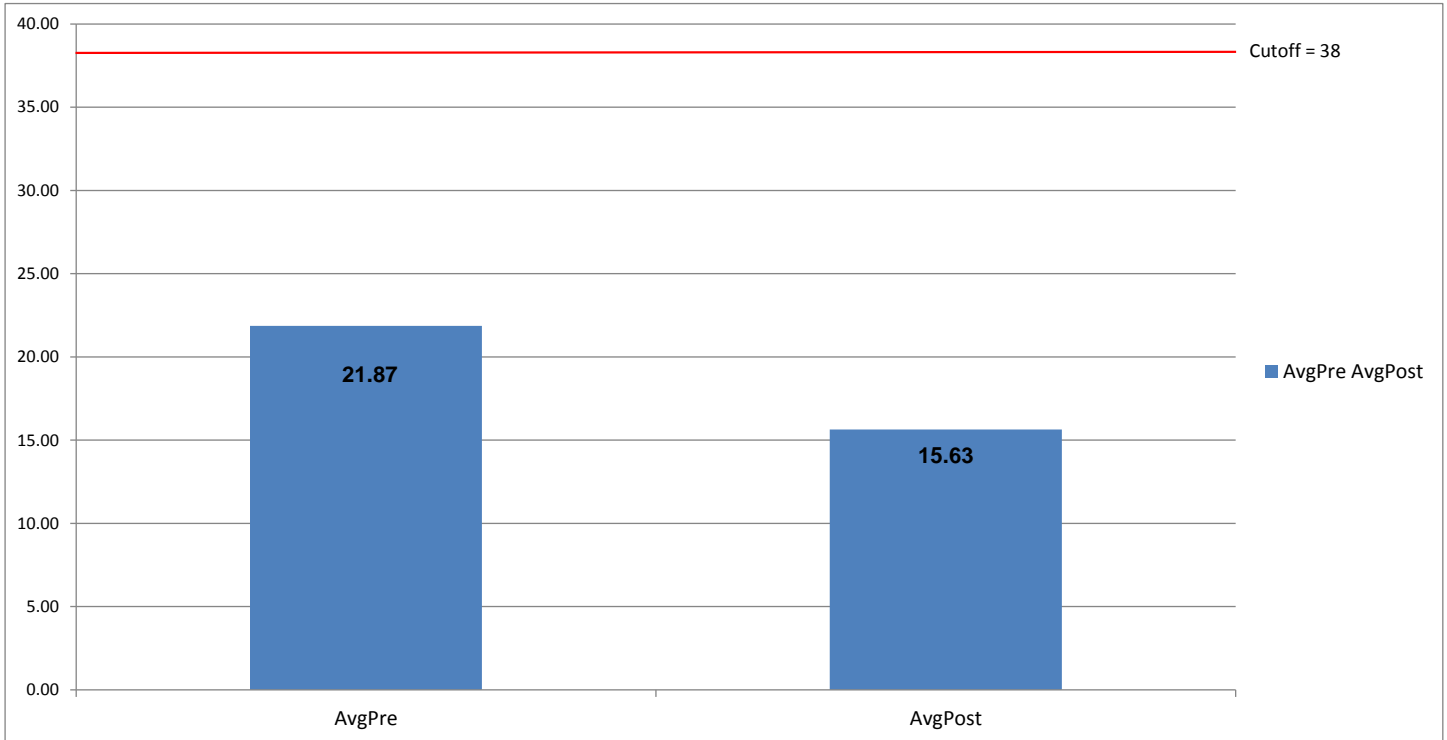
Note5: Unable to compute Reliable Change for the PTSD-RI Adult scale.

Note6: Positive Change indicates that the scores decreased from the pre to the post measures.

**UCLA PTSD RI – Parent**  
(n=247)

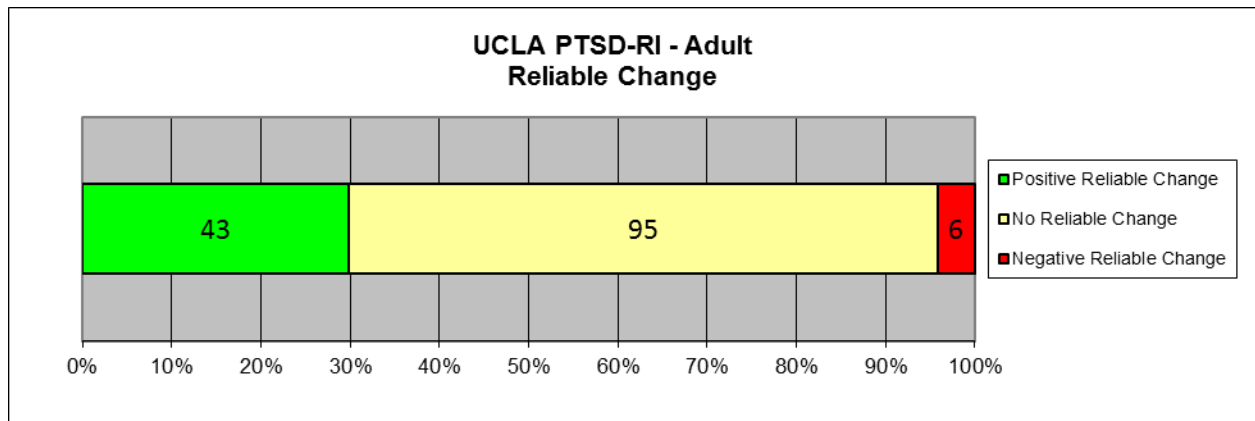
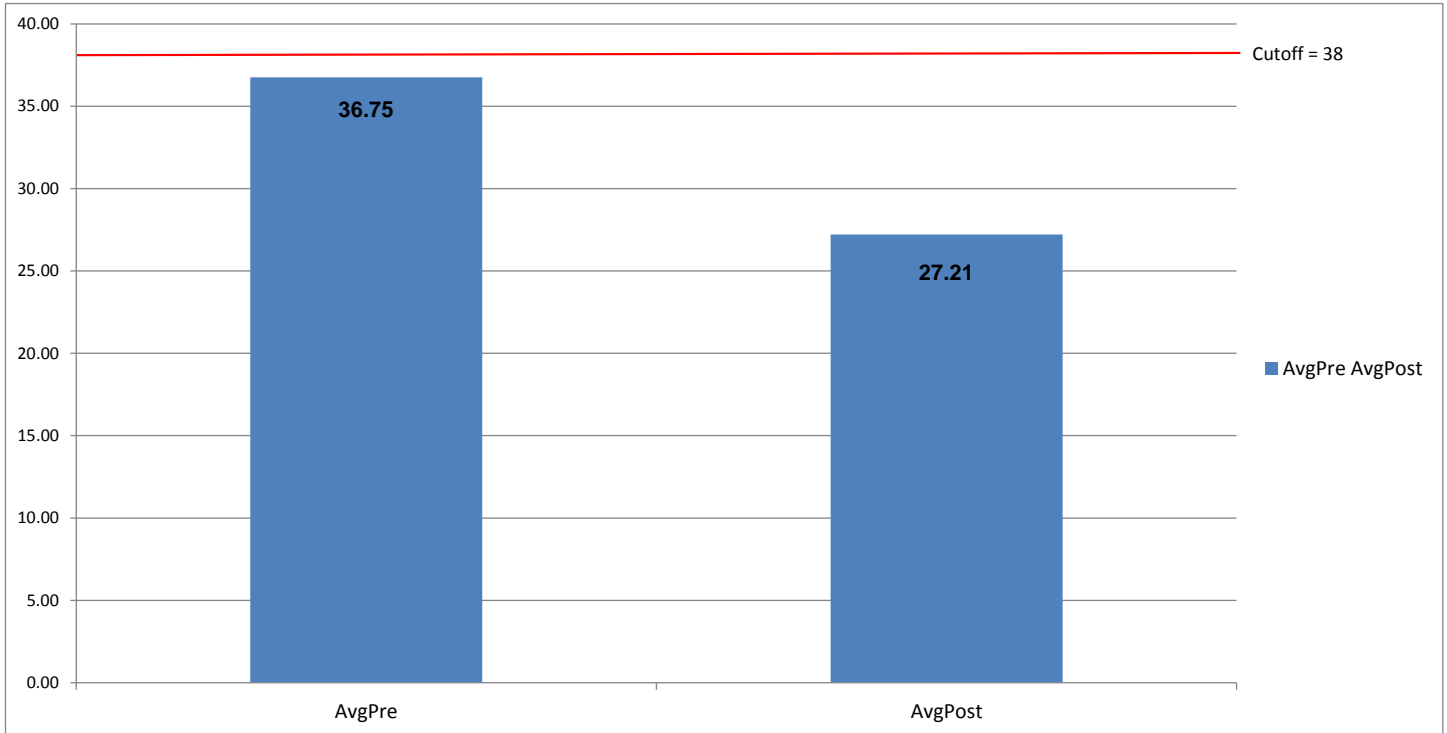


**UCLA PTSD RI – Child/Adolescent**  
**(n=519)**

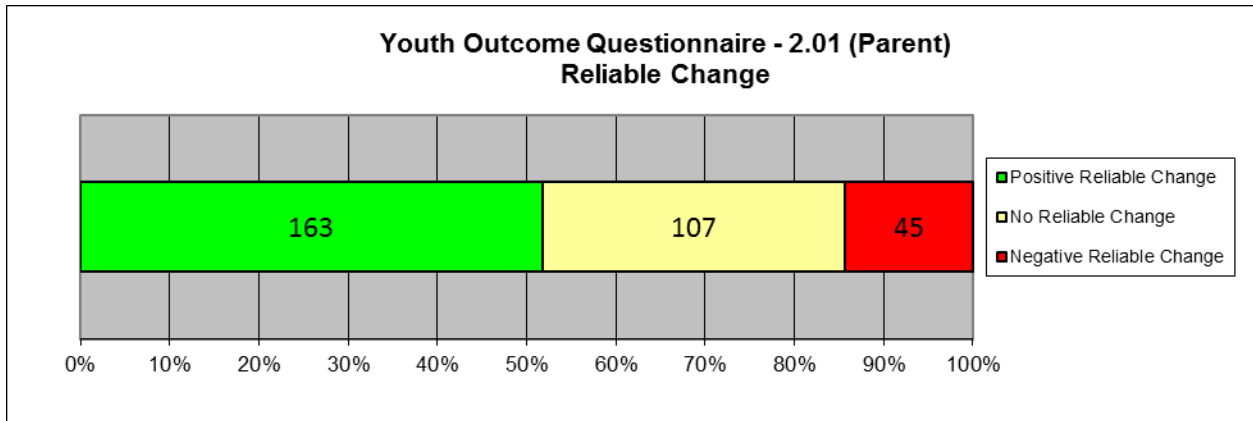
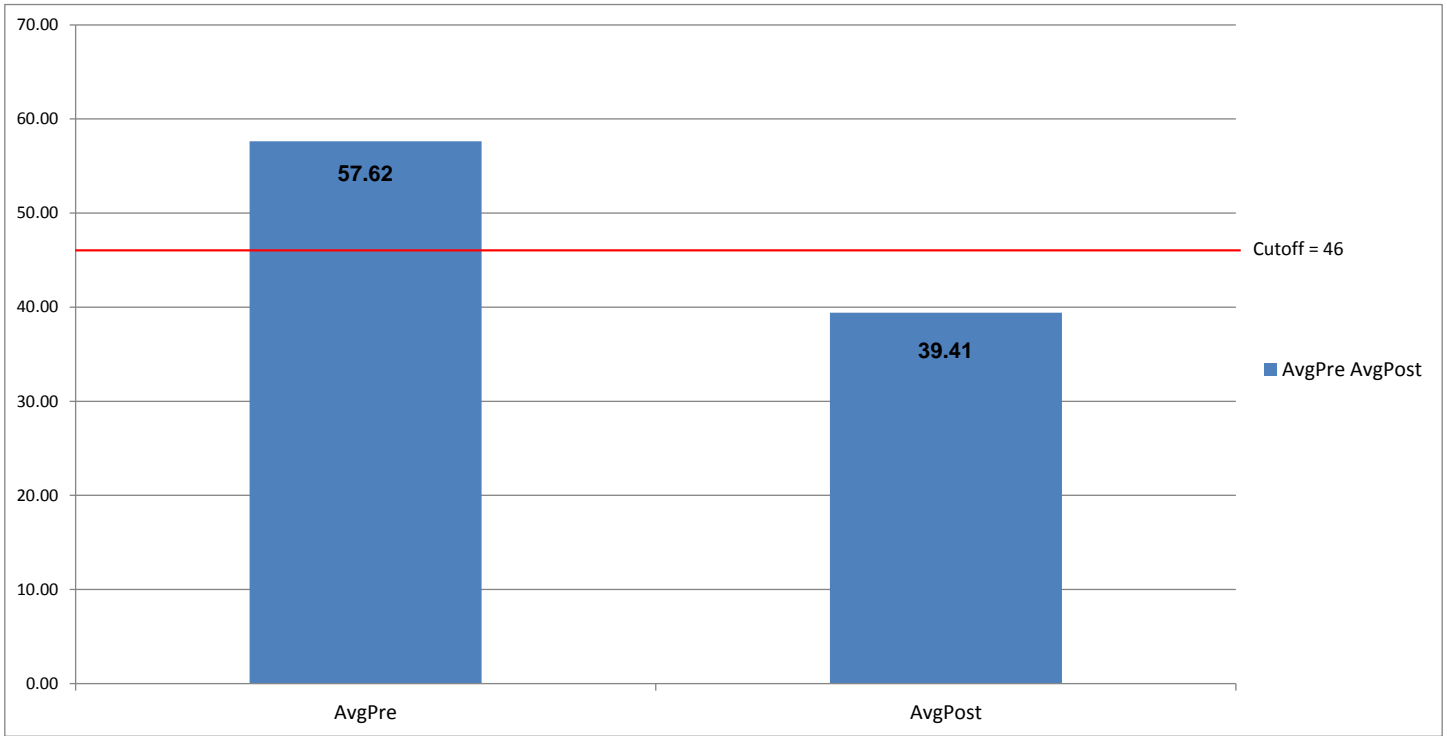




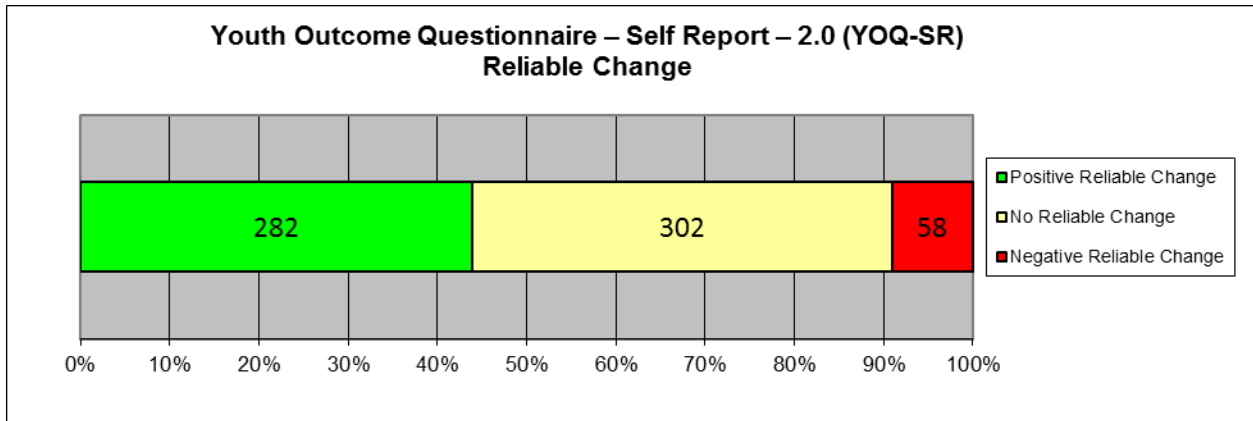
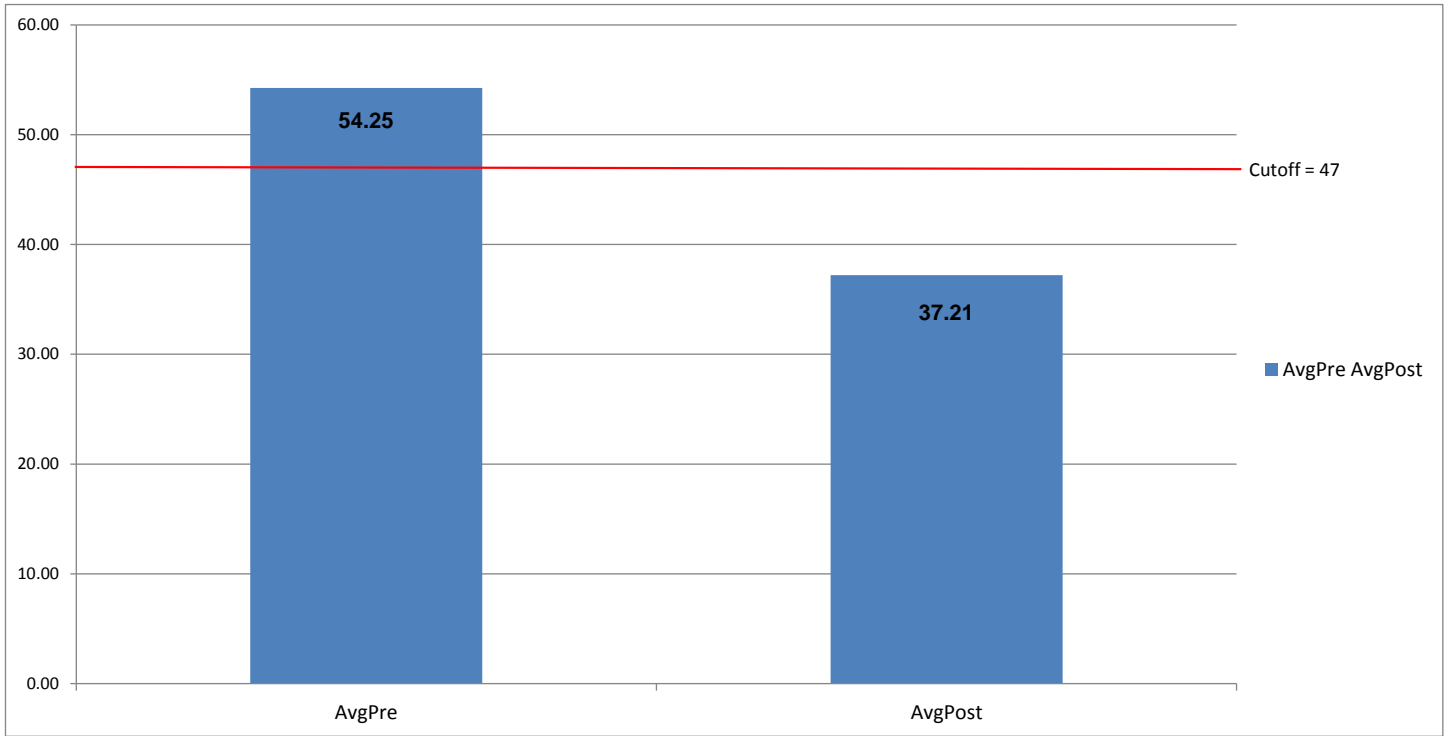
**UCLA PTSD-RI – Adult**  
(n=144)



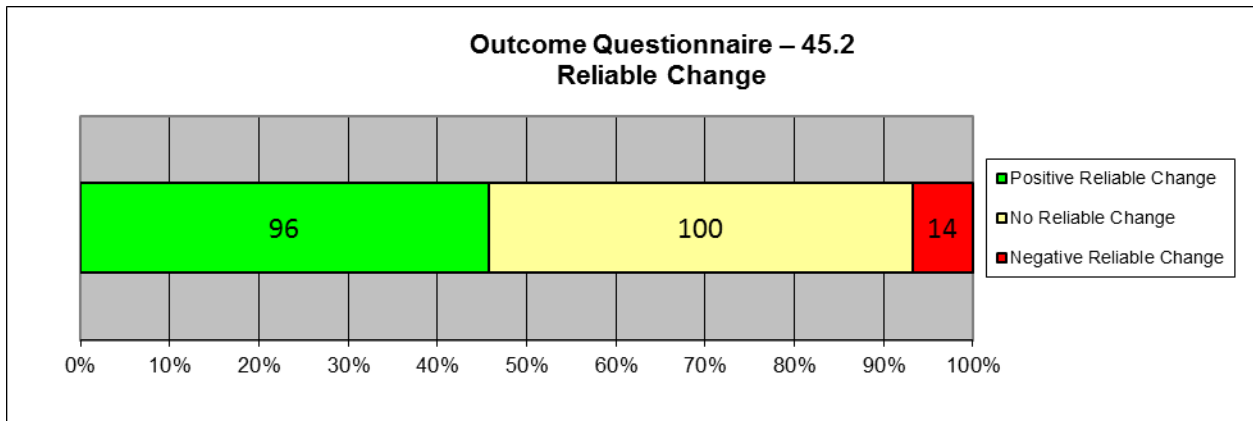
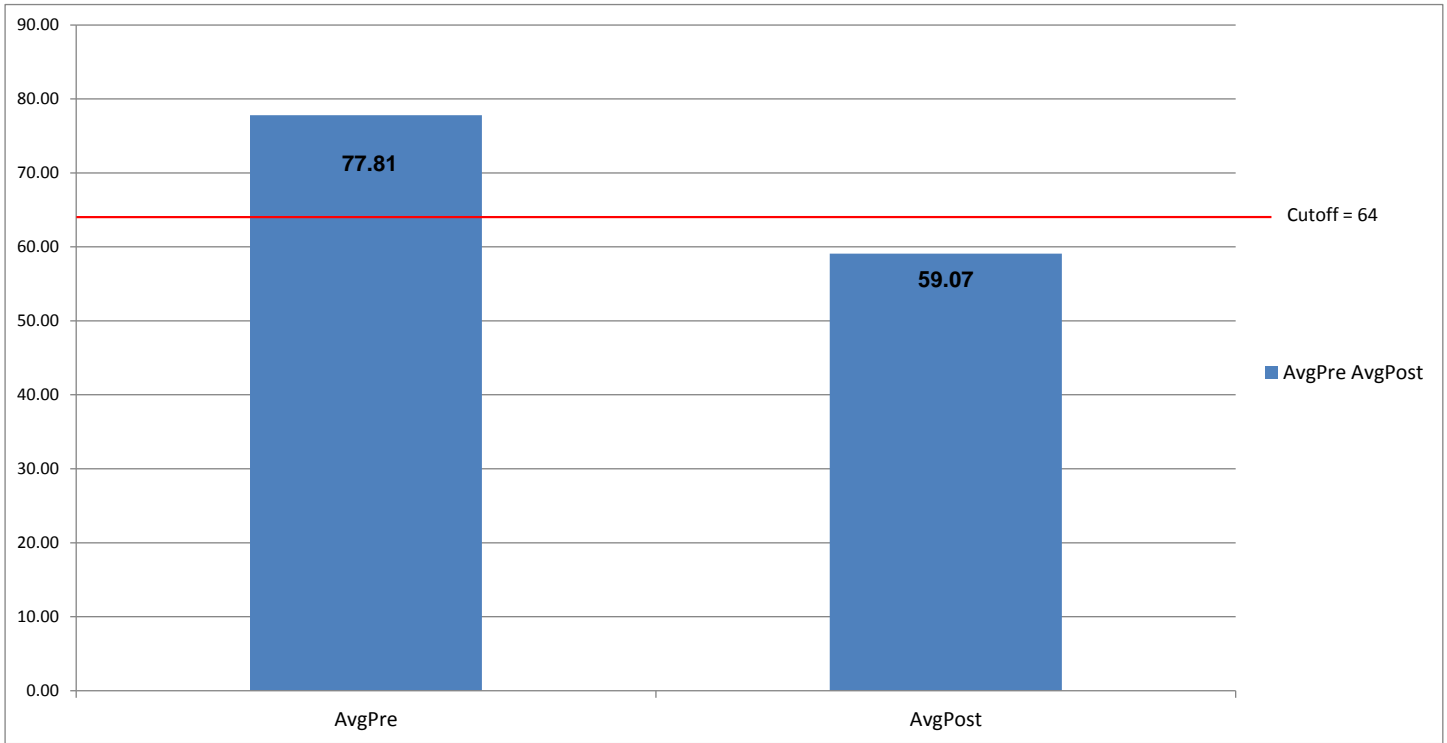
**Youth Outcome Questionnaire (YOQ) – 2.01 (Parent)**  
**(N=315)**



**Youth Outcome Questionnaire – Self Report – 2.0 (YOQ-SR)**  
**(N=642)**



**Outcome Questionnaire-45.2**  
**(N=210)**



## Appendix

### Youth Outcomes Questionnaires (YOQ and YOQ-SR)

The Youth Outcome Questionnaire is a 64-item parent-report that assesses global distress in a child's/adolescent's life from 4-17 years of age. The YOQ-SR is the Self-report version of the YOQ and is completed by the child/adolescent. Total scores on both measures can range from -16 to 240. Total scores of 46 or higher are most similar to a clinical population on the YOQ. A total score of 47 is most similar to that of a clinical population on the YOQ-SR.

### Outcomes Questionnaires (OQ)

The Outcome Questionnaire is a 45-item self-report that assesses global distress in a client's life from ages 19 and older. Total Scores on this measure can range from 0 to 180, with scores of 64 or higher indicating clinical significance.

### Post-Traumatic Stress Disorder Reaction Index (PTSD-RI)

The UCLA Post-Traumatic Stress Disorder Reaction Index (PTSD-RI) is a brief (21 or 22-item measure depending on the version) that measures the frequency of occurrence of post-traumatic stress disorder symptoms during the month prior to the assessment. The Child/Adolescent Version is appropriate for clients age 6-20. The Parent Version is appropriate for clients age 3-18. The Adult Short-form is appropriate for clients age 21+.

Possible Total PTSD Severity Scores range from 0-68; and scores of 38 or higher have the greatest sensitivity and specificity for detecting PTSD.

### Reliable Change Index (RCI)

When comparing Pre and Post scores, it is very helpful to know whether the change reported represents the real effects of the treatment or errors in the system of measurement. The Reliability of Change Index (RCI) is a statistical way of helping to insure that the change recorded between pre and post assessments exceeds that which would be expected on the basis of measurement error alone. The RCI has been calculated using the Jacobson and Truax (1991) method and indicates when change exceeds that which would be expected on the basis of error at the  $p < .05$  probability level. For a more in-depth discussion of Reliability of Change see Jacobson, N. S., & Truax, P. (1991). Clinical Significance: A statistical approach to defining meaningful change in psychotherapy research. *Journal of Consulting and Clinical Psychology*, 59, 12-19. Also see Wise, E. A. (2004). Methods for analyzing psychotherapy outcomes: A review of clinical significance, reliable change, and recommendations for future directions. *Journal of Personality Assessment*, 82(1), 50-59.

The number and percent of clients experiencing positive change, no change and negative change are recorded in table 6. Healthful change in each of the measures cited here means that scores have decreased in value from pre to post test administrations (i.e. recorded a negative change on the RCI). To help avoid confusion, healthful reliable change is presented as positive while unhealthful reliable change is presented as negative change.

The Reliable Change analysis for the PTSD-RI Adult Short-Form used the same Cronbach Alpha score found in the other PTSD-RI versions.

### Supplemental Information for Table 3 “Other” Diagnosis Category

DSM-IV Primary Axis Diagnosis - Clients Who Entered Seeking Safety	n	Percent
Disruptive Behavior Disorder NOS	503	11.16%
Major Depressive Disorder, Recurrent, Moderate	390	8.66%
Conduct Disorder, Adolescent-Onset Type	347	7.70%
Attention-Deficit/Hyperactivity Disorder, Combined Type or Hyperactive Impulse Type	306	6.79%
Major Depressive Disorder, Rec., Severe W/O Psychotic Features	286	6.35%
Anxiety Disorder NOS	206	4.57%
Generalized Anxiety Disorder	180	3.99%
Bipolar Disorder NOS	168	3.73%
Major Depressive Disorder, Single Episode, Moderate	164	3.64%
Major Depressive Disorder, Rec., Severe With Psychotic Features	153	3.40%
Major Depressive Disorder, Recurrent, Unspecified	122	2.71%
Psychotic Disorder NOS	96	2.13%
Adjustment Disorder With Anxiety and Depressed Mood	93	2.06%
Adjustment Disorder With Depressed Mood	91	2.02%
Major Depressive Disorder, Single Episode, Unspecified	82	1.82%
Major Depressive Disorder, Recurrent, Mild	82	1.82%
Major Depressive Disorder, SE, Severe W/O Psychotic Features	80	1.78%
Schizoaffective Disorder	75	1.66%
Major Depressive Disorder, Single Episode, Mild	71	1.58%
Conduct Disorder, Childhood-Onset Type	67	1.49%
Attention-Deficit/Hyperactivity Disorder, Predominantly Inattentive Type	65	1.44%
Major Depressive Disorder, SE, Severe With Psychotic Features	63	1.40%
Adjustment Disorder W/Mixed Disturbance Emotion and Conduct	62	1.38%
Schizophrenia, Paranoid Type	55	1.22%
Bipolar II Disorder	39	0.87%
Attention-Deficit/Hyperactivity Disorder NOS	39	0.87%
Adjustment Disorder Unspecified	35	0.78%
Adjustment Disorder With Anxiety	34	0.75%
Panic Disorder Without Agoraphobia	34	0.75%
Adjustment Disorder With Disturbance of Conduct	28	0.62%
Bipolar I Disorder, MRE, Depressed, Unspecified	24	0.53%
Conduct Disorder, Unspecified Onset	21	0.47%
Bipolar I Disorder, MRE, Depressed, Severe With Psychotic Features	21	0.47%
Intermittent Explosive Disorder	21	0.47%
Bipolar I Disorder, MRE, Depressed, Severe W/O Psychotic Features	21	0.47%
Obsessive-Compulsive Disorder	18	0.40%
Bipolar I Disorder, MRE, Mixed, Severe W/O Psychotic Features	18	0.40%
Bipolar I Disorder, MRE, Mixed, Moderate	16	0.36%
No Diagnosis (code invalid as Secondary/Axis III Diagnosis)	16	0.36%

<b>DSM-IV Primary Axis Diagnosis - Clients Who Entered Seeking Safety</b>	<b>n</b>	<b>Percent</b>
Major Depressive Disorder, Recurrent, In Partial Remission	15	0.33%
Bipolar I Disorder, MRE, Mixed, Unspecified	14	0.31%
Bipolar I Disorder, MRE, Depressed, Moderate	14	0.31%
Panic Disorder With Agoraphobia	13	0.29%
Bipolar I Disorder, MRE, Mixed, Severe With Psychotic Features	13	0.29%
Bipolar I Disorder, MRE, Manic, Severe With Psychotic Features	13	0.29%
Social Phobia	13	0.29%
Diagnosis Deferred (code invalid as Secondary/Axis II Diagnosis)	12	0.27%
Bipolar I Disorder, MRE, Unspecified	12	0.27%
Bipolar I Disorder, MRE, Manic, Moderate	12	0.27%
Mood Disorder Due to ...(Indicate Medical Condition)	11	0.24%
Bipolar I Disorder, MRE, Hypomanic/Manic Unspecified	11	0.24%
Reactive Attachment Disorder of Infancy or Early Childhood	10	0.22%
Acute Stress Disorder	10	0.22%
Bipolar I Disorder, MRE, Manic, Severe W/O Psychotic Features	10	0.22%
Bipolar I Disorder, MRE, Depressed, Mild	9	0.20%
Schizophrenia, Disorganized Type	8	0.18%
Schizophrenia, Undifferentiated Type	7	0.16%
Pervasive Developmental Disorder NOS/Asperger's Disorder/Rett's Disorder	6	0.13%
Separation Anxiety Disorder	6	0.13%
Disorder of Infancy, Childhood, or Adolescence NOS	5	0.11%
Major Depressive Disorder, Single Episode, In Partial Remission	5	0.11%
Bipolar I Disorder, Single Manic Episode, Unspecified	5	0.11%
Cyclothymic Disorder	5	0.11%
Impulse-Control Disorder NOS	4	0.09%
Drug Induced Mood Disorder	4	0.09%
Bipolar I Disorder, MRE, Depressed, In Partial Remission	4	0.09%
Bipolar I Disorder, MRE, Mixed, Mild	3	0.07%
Bereavement	3	0.07%
Drug Induced Psychotic Disorder, With Delusions	3	0.07%
Eating Disorder NOS	3	0.07%
Gender Identity Disorder in Adolescents or Adults	3	0.07%
Delusional Disorder	3	0.07%
Major Depressive Disorder, Recurrent, In Full Remission	3	0.07%
Anxiety Disorder Due to General Medical Condition	2	0.04%
Religious or Spiritual Problem/Phase of Life Problem	2	0.04%
Polysubstance Dependence	2	0.04%
Bipolar I Disorder, Single Manic Episode, Moderate	2	0.04%
Schizophrenia, Residual Type	2	0.04%
Drug Induced Psychotic Disorder, With Hallucinations	2	0.04%
Anorexia Nervosa	2	0.04%
Cannabis Abuse	2	0.04%

<b>DSM-IV Primary Axis Diagnosis - Clients Who Entered Seeking Safety</b>	<b>n</b>	<b>Percent</b>
Somatoform Disorder NOS and Undifferentiated Somatoform Disorder	2	0.04%
Bulemia Nervosa	1	0.02%
Bipolar I, SME, Severe W/O Psychotic Features	1	0.02%
Parent-Child Relational Problem	1	0.02%
Agoraphobia Without History of Panic Disorder	1	0.02%
Pain Disorder Associated w/Psychological and Medical	1	0.02%
Major Depressive Disorder, Single Episode, In Full Remission	1	0.02%
Brief Psychotic Disorder	1	0.02%
Adult Antisocial Behavior	1	0.02%
Schizophreniform Disorder	1	0.02%
Bipolar I Disorder, MRE Manic, In Full Remission	1	0.02%
Unspecified Mental Disorder (Nonpsychotic)	1	0.02%
Catatonic Disorder Due to General Medical Condition	1	0.02%
Bipolar I Disorder, MRE, Manic, In Partial Remission	1	0.02%
Alcohol-Induced Anxiety. Mood, Sleep Disorders/Sexual Dysfunction	1	0.02%
Drug Induced Delirium	1	0.02%
Alcohol Dependence	1	0.02%
Drug Induced Disorder NEC	1	0.02%
Drug Related Disorder NOS	1	0.02%
Bipolar I, SME, Severe With Psychotic Features	1	0.02%
Opioid Dependence	1	0.02%
Dissociative Identity Disorder	1	0.02%
Dyspareunia (Not Due to a Medical Condition)	1	0.02%
Psychotic Disorder Due to ...(Indicate Medical Condition) with Delusions	1	0.02%
Bipolar I Disorder, MRE, Depressed, In Full Remission	1	0.02%
Total Other	4506	100.00%