

**COUNTY OF LOS ANGELES – DEPARTMENT OF MENTAL HEALTH  
PROGRAM SUPPORT BUREAU – MHSA IMPLEMENTATION AND OUTCOMES DIVISION**



WELLNESS • RECOVERY • RESILIENCE

**Prevention & Early Intervention: Child Parent Psychotherapy (CPP)**

**Countywide Aggregate Practice Outcomes Dashboard Report**

**Outcome Data Submission through January 22, 2015**

**Participating Legal Entities Include:**

AVIVA CENTER	PACIFIC CLINICS
CALIF INSTITUTE HEALTH SOCIAL SERVICES	PENNY LANE CENTERS
CALIFORNIA HOSPITAL MEDICAL CTR	PROTOTYPES
CHILD AND FAMILY CENTER	PROVIDENCE COMMUNITY SERVICES
CHILD AND FAMILY GUIDANCE CENTER	SAINT JOHNS HEALTH CENTER
CHILDNET YTH AND FAM SVS INC	SAN FERNANDO VALLEY COMMUNITY MHC
CHILDREN BUREAU OF S CALIFORNIA	SHIELDS FOR FAMILIES
CHILDRENS HOSPITAL OF LOS ANGELES	SPIRITT FAMILY SERVICES
CHILDRENS INSTITUTE INC	ST ANNES
COUNSELING AND RESEARCH ASSC INC	STAR VIEW ADOLESCENT CENTER INC
DIDI HIRSCH PSYCHIATRIC SERVICE	THE GUIDANCE CENTER
FAMILIES FIRST INC	THE HELP GROUP CHILD AND FAMILY CTR
FOOTHILL FAMILY SERVICE	THE REGENTS OF UNIVERSITY OF CA
FOR THE CHILD	THE VILLAGE FAMILY SERVICES
HATHAWAY SYCAMORES CHILD FAM SRVCS	VIP COMMUNITY MENTAL HEALTH CTR INC
HILLSIDES	VISTA DEL MAR CHILD AND FAMILY SVC
INTERCOMMUNITY CHILD GUIDANCE CTR	<b>L.A. COUNTY DMH</b>
LOS ANGELES CHILD GUIDANCE	TIES FOR FAMILIES
PACIFIC ASIAN COUN SVS	ROYBAL FAMILY MHS

# of Clients Claimed to Practice	# of Clients Entered into PEI OMA	# of Tx Cycles in PEI OMA	Clients with Multiple Tx Cycles	Clients Completing Tx	Clients Dropping-Out of Tx	Clients Still in Tx
4389	53.57%	2411	2.42%	32.64%	34.38%	32.97%
n=	2351	n=	57	787	829	795

Note 1: Clients Claimed was based on CPP being selected as the EBP in a PEI Plan and having  $\geq 2$  core services claimed to the practice starting July 1, 2011.

Note 2: Number of clients Completing Tx or Dropping-Out of Tx was determined by whether the EBP was said to be completed (e.g. answered “yes” or “no”) in the PEI OMA.

Total Number of Clients	Age	Gender		Ethnicity					Primary Language		
	Average	Female	Male	African-American	Asian / Pacific Islander	Caucasian	Hispanic / Latino	Other	English	Spanish	Other
2351	3	48.23%	51.77%	18.76%	0.81%	8.68%	65.46%	6.30%	68.52%	30.46%	1.02%
n=		1134	1217	441	19	204	1539	148	1611	716	24

Note1: Age is calculated at the date of the first EBP.

Note2: Percentages may not total 100 due to missing data and/or rounding.

Total Treatment Cycles	Disorder of Infancy, Childhood, or Adolescence NOS	Disruptive Behavior Disorder NOS	Post-Traumatic Stress Disorder	Anxiety Disorder NOS	Adjustment Disorder W/Mixed Disturbance Emotion and Conduct	Other
2411	18.08%	16.72%	13.81%	10.20%	7.30%	33.89%
n=	436	403	333	246	176	817

Note: As reported in PEI OMA beginning of treatment information.

Table 4. Program Process Data - Clients Who Entered CPP			
Outcome Measures Administered	Pre-Test with Scores	Post-test with Scores	Clients Who Completed both a Pre and Post Measure with Scores
Trauma Symptom Checklist for Young Children (TSCYC) n= Ackn=	64.08%	44.34%	20.05%
	1058	439	331
	1651	990	1651
Youth Outcome Questionnaire - 2.01 (Parent) n= Ackn=	67.66%	46.40%	20.81%
	751	303	231
	1110	653	1110

Note 1: Number of acknowledged measures (Ackn=) is determined by the number of required measures that receive a score or an unable to collect reason code.

Note 2: The % indicated for Pre-test with scores, Post-test with scores, and both a Pre- and Post-test with scores is calculated by dividing the (n=#) by the number acknowledged (Ackn=#) in the PEI OMA system for each measure. The number acknowledged (Ackn=#) for those with Pre and Post scores is an estimate based on the greatest number of matches that could be expected given the number of Pre scores acknowledged.

Table 5a. Top Reasons Given for "Unable to Collect"							
Trauma Symptom Checklist for Young Children (TSCYC)	Total Pre 593	Administration date exceeds acceptable range	Outcome measure unavailable	Parent/care provider unavailable	Invalid outcome measure	Parent/care provider refused	Other Reasons
	Percent	36.76%	16.36%	9.95%	7.76%	7.42%	21.75%
	n	218	97	59	46	44	129
	Total Post 551	Premature termination	Parent/care provider unavailable	Lost contact with parent/care provider	Administration date exceeds acceptable range	Outcome measure unavailable	Other Reasons
	Percent	28.49%	22.14%	14.88%	10.53%	7.62%	16.33%
	n	157	122	82	58	42	90

Table 5b. Top Reasons Given for "Unable to Collect"							
Youth Outcome Questionnaire - 2.01 (Parent)	Total Pre 359	Administration date exceeds acceptable range	Outcome measure unavailable	Parent/care provider unavailable	Parent/care provider refused	Premature termination	Other Reasons
	Percent	43.73%	13.09%	12.81%	7.80%	6.69%	15.88%
	n	157	47	46	28	24	57
	Total Post 350	Premature termination	Parent/care provider unavailable	Lost contact with parent/care provider	Administration date exceeds acceptable range	Parent/care provider refused	Other Reasons
	Percent	29.14%	21.71%	16.00%	10.86%	7.43%	14.86%
	n	102	76	56	38	26	52

Table 6. Service Delivery Data – Clients Who Completed CPP						
Total Treatment Cycles 787	Average Length of Treatment in Weeks	Range of Treatment Weeks		Average Number of Sessions	Range of Sessions	
	38	Min 0	Max 127	32	Min 1	Max 204

Note: Completed CPP is defined as having a 'yes' for completion indicated in the PEI OMA.

<b>Table 7a. Outcome Data<sup>‡</sup> – Clients who Completed CPP</b>					
		<b>Percent Improvement from Pre to Post</b>	<b>Percent of Clients Showing Reliable Change* from Pre-CPP to Post-CPP</b>		
			<b>Positive Change</b>	<b>No change</b>	<b>Negative Change</b>
<b>Youth Outcome Questionnaire - 2.01 (Parent)</b>	<b>TOTAL</b>	55.19%	64.04%	30.90%	5.06%
		(n=178)	114	55	9

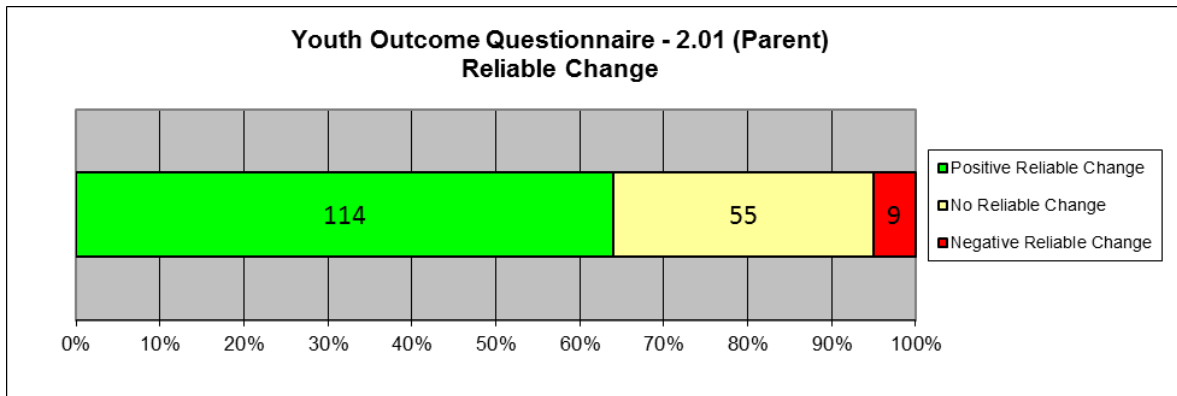
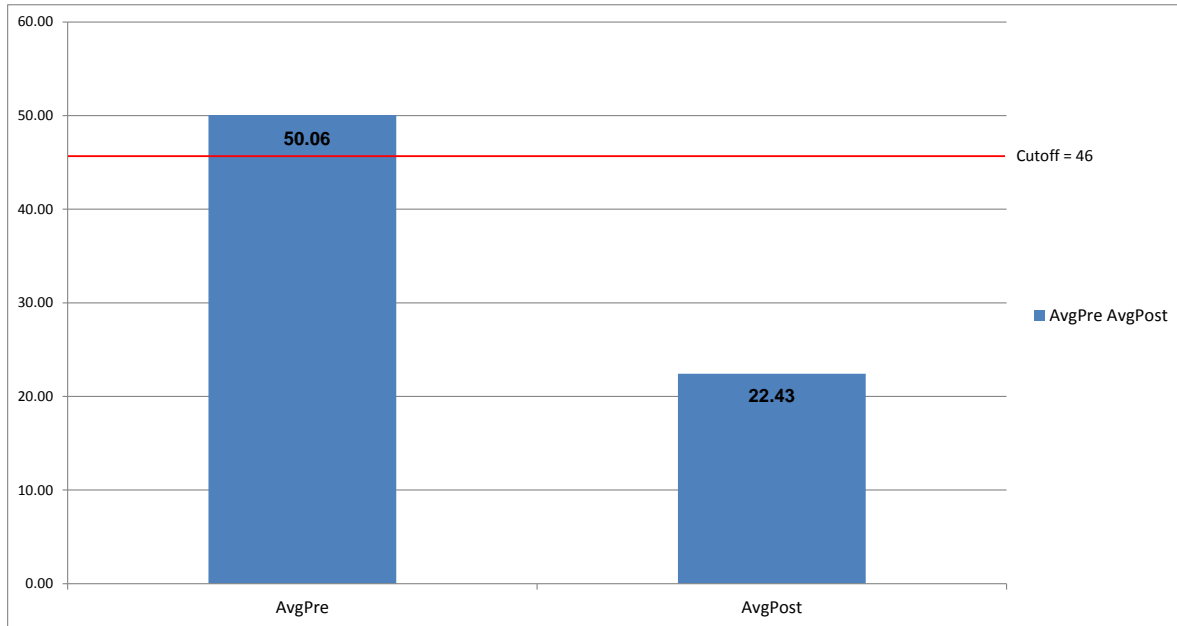
<sup>‡</sup>Please see Appendix A. for a description of the CPP outcome measures and the outcome indicators (percent improvement in average scores; and, percent of clients showing reliable change).

Note 2 Possible YOQ-Parent Total Scores can range from -16 -240, with a clinical cutoff of 46

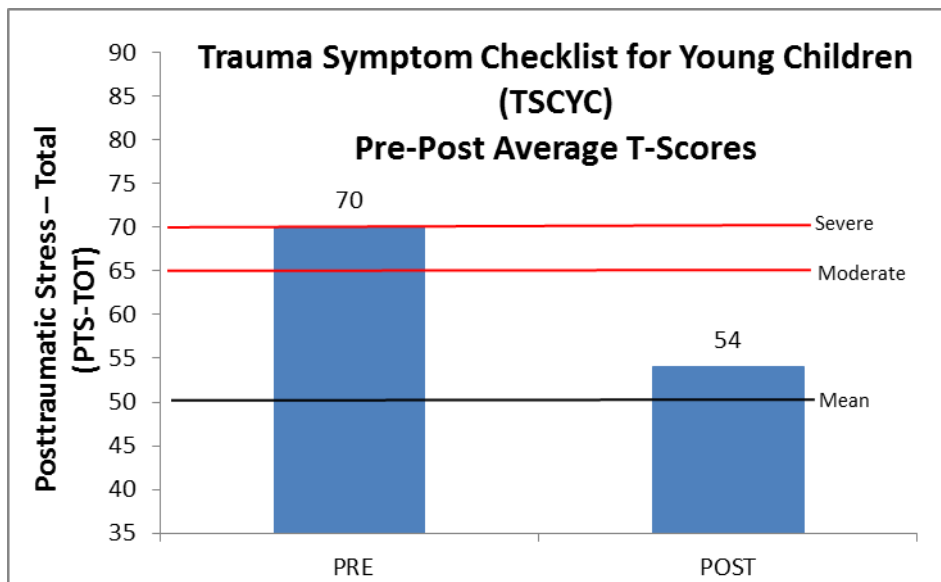
Note 3: Aggregate outcome data based on fewer than 20 clients are not reported.

Note 4: Positive Change indicates that the scores decreased from the pre to the post measure.

### Youth Outcome Questionnaire (YOQ) - 2.01 (Parent) (N=178)



<b>Table 7b. Outcome Data – Clients who Completed CPP</b>			
<b>Trauma Symptom Check List for Young Children (TSCYC)</b>			
<b>Posttraumatic Stress – Total Scale (PTS-TOT)</b>			
<b>Profile</b>	<b>Percent Change Raw Scores</b>	<b>T-Score Average Pre</b>	<b>T-Score Average Post</b>
<b>All Clients Ages 3-6</b>	<b>19.77% (n=272)</b>	70	54



## Appendix

Trauma Symptom Checklist for Young Children (TSCYC) The Trauma Symptom Checklist for Young Children is a 90-item parent/caregiver report measure that assesses trauma-related symptoms in children from the ages of 3 through 12. For the Los Angeles County PEI Plan, the TSCYC is utilized for the age range of 3 through 6. The TSCYC is the first fully standardized and normed measure of trauma-related symptoms for young children. The TSCYC contains 2 validity scales, 8 clinical scales, and a summary scale (comprising 3 of the clinical scales). Each trauma symptom is rated on a 4 point scale. Each TSCYC clinical scale score can range from 9 to 36. The summary scale (PTS-TOT) score can range from 27 to 108. The clinical cut points can be obtained in the TSCYC manual and can vary depending on the age and gender of the child.

### Youth Outcomes Questionnaires (YOQ)

The Youth Outcome Questionnaire is a 64-item parent-report that assesses global distress in a child's/adolescent's life from 4-17 years of age. Scores on the measure can range from -16 to 240. Scores of 46 or higher are most similar to a clinical population on the YOQ.

### Reliable Change Index

When comparing Pre and Post scores, it is very helpful to know whether the change reported represents the real effects of the treatment or errors in the system of measurement. The Reliability of Change Index (RCI) is a statistical way of helping to insure that the change recorded between pre and post assessments exceeds that which would be expected on the basis of measurement error alone. The RCI has been calculated using the Jacobson and Truax (1991) method and indicates when change exceeds that which would be expected on the basis of error at the  $p < .05$  probability level. For a more in-depth discussion of Reliability of Change see Jacobson, N. S., & Truax, P. (1991). Clinical Significance: A statistical approach to defining meaningful change in psychotherapy research. *Journal of Consulting and Clinical Psychology*, 59, 12-19. Also see Wise, E. A. (2004). Methods for analyzing psychotherapy outcomes: A review of clinical significance, reliable change, and recommendations for future directions. *Journal of Personality Assessment*, 82(1), 50-59.

The number and percent of clients experiencing positive change, no change and negative change are recorded in table 7a. Healthful change in each of the measures cited here means that scores have decreased in value from pre to post test administrations (i.e. recorded a negative change on the RCI). To help avoid confusion, healthful reliable change is presented as positive while unhealthful reliable change is presented as negative change.