

Los Angeles County | Department of Mental Health | Chief Information Office Bureau

Level Of Care Solution | COMPANION GUIDE



LACDMH
LOS ANGELES COUNTY
DEPARTMENT OF
MENTAL HEALTH
hope. recovery. wellbeing.

Disclosure Statement

This document represents the Los Angeles County Department of Mental Health (LACDMH) implementation instructions for Level Of Care service (LOC). This document specifies the required operation workflows, data elements along with associated restrictions to capture data required by LACDMH. LACDMH reserves the right to modify and change the document at any time. LACDMH will disseminate the information in a timely manner, should there be any change to this document.

Revision and Sign-off Sheet

Version History

Date	Author	Version	Change Reference
06/14/2018	LACDMH Integration Team	1.0	Initial Release

Reviewers

Name	Version Approved	Position	Date
Juan Fermin	1.0	IT Manager	

Distribution

Name	Position
Trading Partners and their IT vendors	N/A

Document Properties

Item	Details
Document Title	LAC DMH Level Of Care Service Companion Guide – v1.0
Author	LAC DMH Integration Team
Creation Date	June 14, 2018
Last Updated	June 14, 2018

Table of Contents

A. INTRODUCTION 6

 A.1 BACKGROUND..... 6

 A.2 PURPOSE..... 6

 A.3 OVERVIEW 6

 A.4 PROCESS WORKFLOW DIAGRAM 7

 A.5 SECURITY 7

B. BUSINESS USE CASE & SERVICE OPERATIONS 8

 APPLICATION WORKFLOW DIAGRAM 8

B.1 Get..... 9

 GetClientLOCDetails 9

 B.1.1 GETCLIENTLOCDETAILS_INPUT..... 9

 B.1.2 GETCLIENTLOCDETAILS_OUTPUT 9

 B.1.3 XML SAMPLE OF GETCLIENTLOCDETAILS_INPUT 10

 B.1.4 XML SAMPLE OF GETCLIENTLOCDETAILS_OUPTUT (WITH CLIENT ID) 10

 B.1.5 XML SAMPLE OF GETCLIENTLOCDETAILS_OUPTUT (WITH SUBMISSION ID) 11

 GetClientLOCHistory 11

 B.1.6 GETCLIENTLOCHISTORY_INPUT 12

 B.1.7 GETCLIENTLOCHISTORY_OUTPUT 12

 B.1.8 XML SAMPLE OF GETCLIENTLOCHISTORY_INPUT 12

 B.1.9 XML STRUCTURE GETCLIENTLOCHISTORY_OUTPUT..... 12

B.2 Add..... 14

 B.2.1 ADDCLIENTLOC_INPUT..... 14

 B.2.2 ADDCLIENTLOC_OUTPUT 15

 B.2.3 XML SAMPLE OF ADDCLIENTLOC_INPUT..... 15

 B.2.4 XML SAMPLE OF ADDCLIENTLOC_OUTPUT 16

B.3 Update 17

 B.3.1 UPDATESERVICEREQUEST_INPUT 17

 B.3.2 UPDATECLIENTLOC_OUTPUT 18

 B.3.3 XML SAMPLE OF UPDATECLIENTLOC_INPUT..... 18

 B.3.4 XML STRUCTURE UPDATECLIENTLOC_OUTPUT..... 19

C. Error Handling..... 20

D. Dictionary Service..... 22

E. Client Services..... 23

 Appendix 24

 WSDL LOCATIONS..... 24

SUMMARY OF CHANGES IN VERSION 1.0 24

A. INTRODUCTION

A.1 BACKGROUND

Establishing a Level of Care system for clients ages 18 and above provides the framework for a service continuum and service delivery expectations. The tool that the Los Angeles County Department of Mental Health has selected, the Determinants of Care, was developed and validated by LA County providers as part of the 2014-2016 “Integrated FSP Pilot Project”. The Determinants of Care Scale is comprised of 8 elements of the recovery process associated with therapeutic interventions and the stability of a Milestones of Recovery Scale score. The Determinants of Care Scale sums up the number of determinants answered positively and, utilizing an easy to use algorithm, assigns a score that corresponds to a particular level of care. Each determinant endorsed can be addressed in the treatment plan in order to optimize a client’s ability to self-coordinate.

Providers are expected to submit Level Of Care assessments information on a regular and ongoing basis. Depending on how clinical services are planned and delivered, either the primary clinician or case manager or the treatment team should complete the assessment. The Determinants may be completed during a session with a client, as part of an ongoing assessment or an intervention.

FSP clients are required to maintain a monthly administration. For all other clients receiving ongoing mental health services, assessments should be completed every 6 months.

A.2 PURPOSE

The Level Of Care (LOC) Services Companion Guide is intended to be used by LACDMH’s Trading Partners and their respective vendors to allow them to capture and electronically submit LOC data from their respective EHR systems. This document is designed to provide a logical view of the LOC data elements required and conditionally required in order to communicate with DMH. In addition, the other items specified in this guide are: Business Use Cases, Workflows, Operation details, attribute descriptions, restrictions, and acceptable values. This guide also describes service operation requests and responses.

A.3 OVERVIEW

This guide assumes the reader has a working understanding of the following technology stack including but not limited to the open protocols and standards of SOAP, WSDL, XSD, and XML as they relate to data exchange between applications or systems. In addition, it is imperative that the reader has a working knowledge of user authentication using x.509 certificates, PKI exchange, and Certificate Authority technologies.

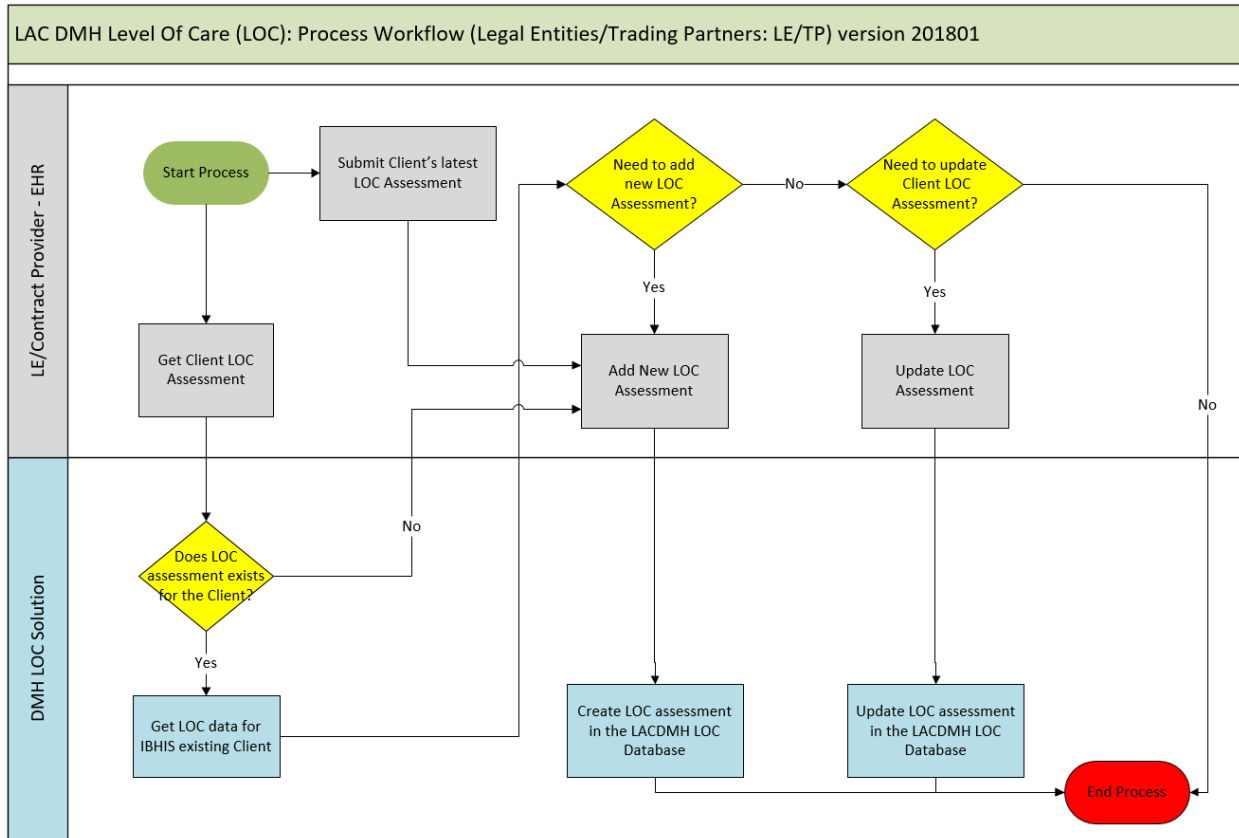
The DMH Level Of Care supports the following operations to facilitate LOC data exchange between DMH and Trading Partner EHR/EMR systems:

- Add Client LOC
- Update Client LOC
- Get Client LOC History
- Get Client LOC Details

This guide describes service operation requests and responses. The Request action indicates what DMH will be expecting as “Input”. The Response action indicates what DMH will be returning as “Output”.

A.4 PROCESS WORKFLOW DIAGRAM

The following workflow details LOC Service processing. The diagram demonstrates all possible interactions (except error handling) that a Trading Partner is likely to engage while trading electronically with DMH.



A.5 SECURITY

The Level Of Care Service use X.509 Digital Certificates and a Managed Public Key Infrastructure (MPKI) to authenticate and authorize Trading Partners. To access the services successfully, callers must provide a Program Identifier, known as a ProgramID (previously referred to as the Legal Entity Number) along with their LACDMH assigned Digital Certificate. In the Message Context Input of the request, "ProgramID" is required. Please note that certificate authentication is verified via transport.

To illustrate placement of the Program Identifier, a sample SOAP message is provided below using the GetClientLOCHistory_Input Request:

```

<soapenv:Envelope xmlns:soapenv="http://schemas.xmlsoap.org/soap/envelope/"
xmlns:ns="http://b2b.dmh.lacounty.gov/ClientLOCService/201701"
xmlns:typ="http://b2b.dmh.lacounty.gov/ClientLOCService/201701/types">
  <soapenv:Header/>
  <soapenv:Body>
    <ns:GetClientLOCHistory_Input typ:ClientID="9999999" typ:ProgramID="12345"/>
  </soapenv:Body>
</soapenv:Envelope>
    
```

When an invalid certificate is provided, the service will return a 403 Forbidden error. When the ProgramID provided is blank or invalid, the service will also deny access to resources and return an error.

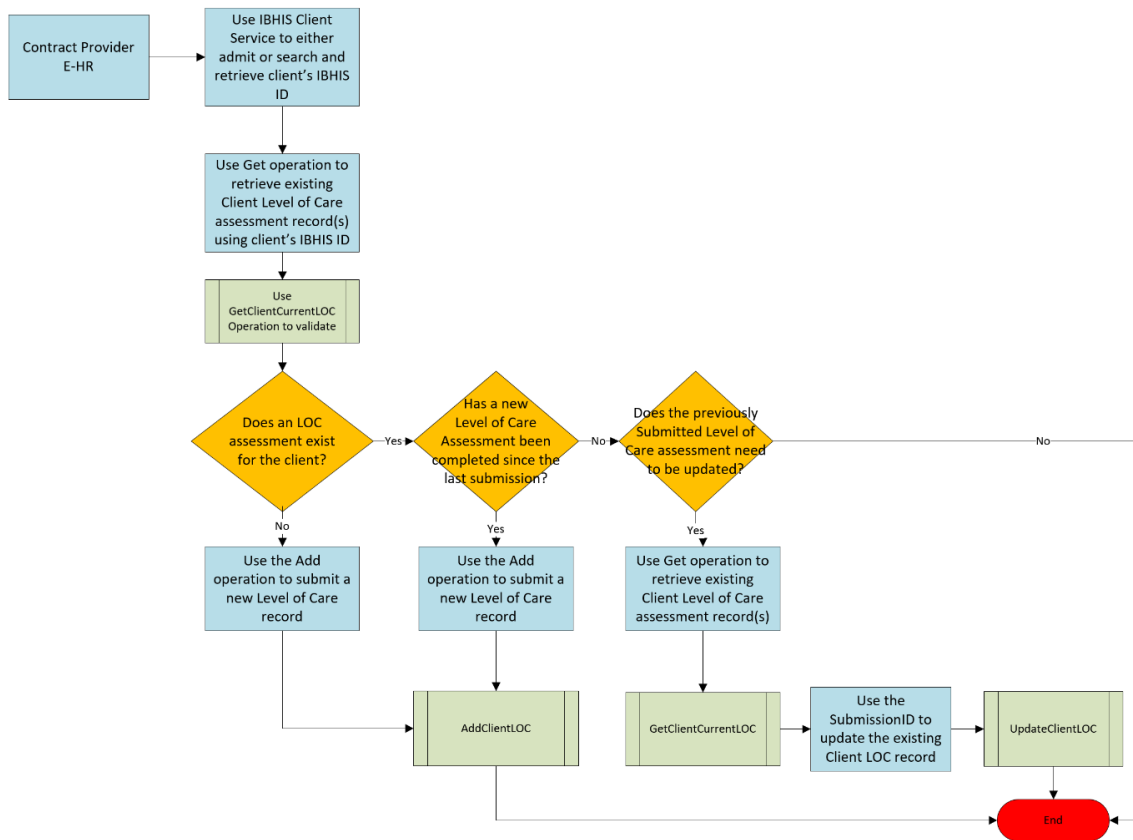
B. BUSINESS USE CASE & SERVICE OPERATIONS

This section describes LOC Service operations and associated use cases. The required workflow for LOC service starts with calling the GetClientCurrentLOC operation to retrieve the LOC for an existing Client in IBHIS (DMH Integrated Behavioral Health Information System). TPs can retrieve details of a particular LOC record by providing the IBHIS Client ID . When needed, a new record can be added and the record can be updated as many times as necessary by calling the AddClientLOC and UpdateClientLOC respectively. Contract Providers are expected to capture and submit all data to the extent possible whenever exchanging Level Of Care data with DMH.

The following sections describe the various business domains and related LOC operations in detail. Each subsection describes business use case, pre-condition(s), service operation with data attributes and any notes to follow.

APPLICATION WORKFLOW DIAGRAM

LACDMH Level Of Care (LOC) Application Workflow Diagram



The following sections describe the various business domains and related LOC Service operations in detail. Each sub-section describes business use case, pre-condition(s), service operation with data attributes and any notes to follow.

B.1 Get

GetClientLOCDetails

Definition: The GetClientLOCDetails operation allows Contract Providers to search/retrieve LOC data for an existing DMH IBHIS Client.

Business Use Cases:

- #1. Retrieve current LOC assessment for an existing IBHIS Client.
- #2. Retrieve a specific assessment for an existing IBHIS Client.

Service Action:

When providing only a clientid, the GetClientLOCDetails retrieves the current Client LOC assessment. When providing an SubmissionID, the GetClientLOCDetails retrieves the requested Client LOC assessment.

Precondition:

- Contract Providers are authenticated and can submit a valid LOC request.
- An active LOC record exists for the Client.
- Contract Providers know the IBHIS Client ID. This ID can be retrieved from Client Services. For more information regarding *Client Services* –visit section [E. Client Services](#).

B.1.1 GETCLIENTLOCDETAILS_INPUT

* R = **Required**; CR = **ConditionallyRequired**; O = **Optional**

Ref #	Data Element	R CR O	Data Type	Min Len	Max Len	Restriction	Acceptable Values
1	ProgramID	R	String	5	5	n/a	ProgramID configured in BizTalk associated with the Digital Certificate used for authentication.
2	ClientID	R	Int	1	9	n/a	numbers only

B.1.2 GETCLIENTLOCDETAILS_OUTPUT

Ref #	Data Element	DataType	R/O/CR	MinLen	MaxLen
1	Acknowledgement	String	R	100	500
2	SubmissionID	String	R	1	n/a
3	ProgramOfService	Enumeration	R	n/a	n/a
5	ClientID	String	R	1	9
6	LOCProgram	Enumeration	R	n/a	n/a
7	AssessmentDate	Date	R	10	10
8	MORSScoreType	Enumeration	R	n/a	n/a
9	MORSScore	String	R	1	50

Ref #	Data Element	Data Type	R/O/CR	MinLen	MaxLen
10	LOCScore	String	R	1	50
11	Determinant1	String	R	n/a	n/a
12	Determinant2	String	R	n/a	n/a
13	Determinant3	String	R	n/a	n/a
14	Determinant4	String	R	n/a	n/a
15	Determinant5	String	R	n/a	n/a
16	Determinant6	String	R	n/a	n/a
17	Determinant7	String	R	n/a	n/a
18	Determinant8	String	R	n/a	n/a

B.1.3 XML SAMPLE OF GETCLIENTLOCDETAILS_INPUT

```
<soapenv:Envelope xmlns:soapenv="http://schemas.xmlsoap.org/soap/envelope/"
xmlns:ns="http://b2b.dmh.lacounty.gov/LOC/201801"
xmlns:mes="http://b2b.dmh.lacounty.gov/LOC/201801/MessageContextInput"
xmlns:typ="http://b2b.dmh.lacounty.gov/LOC/201801/types">
  <soapenv:Header/>
  <soapenv:Body>
    <ns:GetClientLOCDetail_Input>
      <mes:MessageContextInput typ:ProgramID="?"/>
      <typ:GetLOC>
        <!--You have a CHOICE of the next 2 items at this level-->
        <typ:Client ClientID="?"/>
        <typ:LOC SubmissionID="?"/>
      </typ:GetLOC>
    </ns:GetClientLOCDetail_Input>
  </soapenv:Body>
</soapenv:Envelope>
```

B.1.4 XML SAMPLE OF GETCLIENTLOCDETAILS_OUPTUT (WITH CLIENT ID)

```
<s:Envelope xmlns:s="http://schemas.xmlsoap.org/soap/envelope/">
  <s:Body>
    <ns0:GetClientLOCDetail_Output xmlns:ns0="http://b2b.dmh.lacounty.gov/LOC/201801"
xmlns:mci="http://b2b.dmh.lacounty.gov/LOC/201801/MessageContextInput"
xmlns:t="http://b2b.dmh.lacounty.gov/LOC/201801/types"
xmlns:mco="http://b2b.dmh.lacounty.gov/LOC/201801/MessageContextOutput">
      <mco:MessageContextOutput Acknowledgement="Completed successfully."/>
      <t:ClientLOCDetail t:SubmissionID="2185" t:ClientID="6666" ProgramOfService="7250A"
AssessmentDate="2018-07-02" LOCProgram="RRR">
        <Score MORSScoreType="Older Adult MORS" MORSScore="1" LOCScore="1"/>
      </t:ClientLOCDetail>
      <t:Determinants>
        <Determinant1 DeterminantTypeID="1" Value="true"/>
        <Determinant2 DeterminantTypeID="2" Value="false"/>
      </t:Determinants>
    </ns0:GetClientLOCDetail_Output>
  </s:Body>
</s:Envelope>
```

```

    <Determinant3 DeterminantTypeID="3" Value="true"/>
    <Determinant4 DeterminantTypeID="4" Value="true"/>
    <Determinant5 DeterminantTypeID="5" Value="false"/>
    <Determinant6 DeterminantTypeID="6" Value="true"/>
    <Determinant7 DeterminantTypeID="7" Value="false"/>
    <Determinant8 DeterminantTypeID="8" Value="true"/>
  </t:Determinants>
</ns0:GetClientLOCDetail_Output>
</s:Body>
</s:Envelope>

```

B.1.5 XML SAMPLE OF GETCLIENTLOCDETAILS_OUPTUT (WITH SUBMISSION ID)

```

<s:Envelope xmlns:s="http://schemas.xmlsoap.org/soap/envelope/">
  <s:Body>
    <ns0:GetClientLOCDetail_Output xmlns:ns0="http://b2b.dmh.lacounty.gov/LOC/201801"
  xmlns:mci="http://b2b.dmh.lacounty.gov/LOC/201801/MessageContextInput"
  xmlns:t="http://b2b.dmh.lacounty.gov/LOC/201801/types"
  xmlns:mco="http://b2b.dmh.lacounty.gov/LOC/201801/MessageContextOutput">
      <mco:MessageContextOutput Acknowledgement="Completed successfully."/>
      <t:ClientLOCDetail t:SubmissionID="2185" t:ClientID="6666" ProgramOfService="7250A"
  AssessmentDate="2018-07-02" LOCProgram="RRR">
        <Score MORSScoreType="Older Adult MORS" MORSScore="1" LOCScore="1"/>
      </t:ClientLOCDetail>
      <t:Determinants>
        <Determinant1 DeterminantTypeID="1" Value="true"/>
        <Determinant2 DeterminantTypeID="2" Value="false"/>
        <Determinant3 DeterminantTypeID="3" Value="true"/>
        <Determinant4 DeterminantTypeID="4" Value="true"/>
        <Determinant5 DeterminantTypeID="5" Value="false"/>
        <Determinant6 DeterminantTypeID="6" Value="true"/>
        <Determinant7 DeterminantTypeID="7" Value="false"/>
        <Determinant8 DeterminantTypeID="8" Value="true"/>
      </t:Determinants>
    </ns0:GetClientLOCDetail_Output>
  </s:Body>
</s:Envelope>

```

GetClientLOCHistory

Definition: The GetClientLOCHistory operation allows Contract Providers to retrieve history of LOC data for an existing DMH IBHIS Client.

Business Use Cases:

#1. Retrieve history of LOC assessments for an existing IBHIS Client.

Service Action:

When providing a clientid, the GetClientLOCHistory retrieves the history of the Client LOC assessments.

Precondition:

- Contract Providers are authenticated and can submit a valid LOC request.
- An active LOC record exists for the Client.
- Contract Providers know the IBHIS Client ID. This ID can be retrieved from Client Services. For more information regarding *Client Services* –visit section [E. Client Services](#).

B.1.6 GETCLIENTLOCHISTORY_INPUT

Ref #	Data Element	R CR O	Data Type	Min Len	Max Len	Restriction	Acceptable Values
1	ProgramID	R	String	5	5	n/a	ProgramID configured in BizTalk associated with the Digital Certificate used for authentication.
2	ClientID	R	Int	1	9	n/a	numbers only

B.1.7 GETCLIENTLOCHISTORY_OUTPUT

Ref #	Data Element	DataType	R/O/CR	MinLen	MaxLen
1	Acknowledgement	String	R	100	500
2	SubmissionID	String	R	1	n/a
3	ProgramOfService	Enumeration	R	n/a	n/a
5	ClientID	String	R	1	9
6	LOCProgram	Enumeration	R	n/a	n/a
7	AssessmentDate	Date	R	10	10
8	MORSScoreType	Enumeration	R	n/a	n/a
9	MORSScore	String	R	1	50
10	LOCScore	String	R	1	50

B.1.8 XML SAMPLE OF GETCLIENTLOCHISTORY_INPUT

```
<soapenv:Envelope xmlns:soapenv="http://schemas.xmlsoap.org/soap/envelope/"
xmlns:ns="http://b2b.dmh.lacounty.gov/ClientLOCService/201701"
xmlns:typ="http://b2b.dmh.lacounty.gov/ClientLOCService/201701/types"
xmlns:mes="http://b2b.dmh.lacounty.gov/ClientLOCService/201701/MessageContextInput">
  <soapenv:Header/>
  <soapenv:Body>
    <ns:GetClientLOCHistory_Input typ:ClientID="6523">
      <mes:MessageContextInput typ:ProgramID="00108"/>
    </ns:GetClientLOCHistory_Input>
  </soapenv:Body>
</soapenv:Envelope>
```

B.1.9 XML STRUCTURE GETCLIENTLOCHISTORY_OUTPUT

SUCCESSFUL:

```
<s:Envelope xmlns:s="http://schemas.xmlsoap.org/soap/envelope/">
  <s:Body>
```

```

<ns0:GetClientLOCHistory_Output xmlns:ns0="http://b2b.dmh.lacounty.gov/LOC/201801"
xmlns:t="http://b2b.dmh.lacounty.gov/LOC/201801/types"
xmlns:mco="http://b2b.dmh.lacounty.gov/LOC/201801/MessageContextOutput">
  <mco:MessageContextOutput Acknowledgement="Completed successfully."/>
  <t:ClientLOCHistory>
    <t:ClientLOCDetail t:SubmissionID="3088" t:ClientID="672" ProgramOfService="7646A"
AssessmentDate="2017-12-31" LOCProgram="RRR">
      <Score MORSScoreType="Older Adult MORS" MORSScore="5" LOCScore="3"/>
    </t:ClientLOCDetail>
    <t:ClientLOCDetail t:SubmissionID="3089" t:ClientID="672" ProgramOfService="7646A"
AssessmentDate="2018-05-31" LOCProgram="FSP">
      <Score MORSScoreType="Adult MORS" MORSScore="2" LOCScore="2"/>
    </t:ClientLOCDetail>
  </t:ClientLOCHistory>
</ns0:GetClientLOCHistory_Output>
</s:Body>
</s:Envelope>

```

UNSUCCESSFUL:

```

<s:Envelope xmlns:s="http://schemas.xmlsoap.org/soap/envelope/">
  <s:Body>
    <s:Fault>
      <faultcode>XXXX</faultcode>
      <faultstring xml:lang="en-US">Error Message Varies</faultstring>
    </s:Fault>
  </s:Body>
</s:Envelope>

```

B.2 Add

Definition:

The AddClientLOC operation allows Contract Providers to submit Level Of Care assessment for an existing IBHIS Client.

Business Use Case:

- #1. Add a new Level of Care assessment for a client that exists in IBHIS.
- #2. Add an additional Level of Care assessment for a client that exists in IBHIS.

Service Action:

AddClientLOC operation creates LOC record for an existing IBHIS Client. Adding LOC can be performed using the Input Request of the operation. See section [B.2.3](#) for an example.

Precondition:

Contact Providers are authenticated and can provide a valid LOC request.

Note:

- 1. It is recommended that Contract Providers should use the GetClientCurrentLOC operation prior to creating LOC record.
- 2. ClientID means IBHIS Client ID.

B.2.1 ADDCLIENTLOC_INPUT

* R = **Required**; CR = **ConditionallyRequired**; O = **Optional**

Ref #	Data Element	R CR O	Data Type	Min Len	Max Len	Restriction	Acceptable Values
1	ProgramID	R	String	5	5	n/a	ProgramID configured in BizTalk associated with the Digital Certificate used for authentication.
2	ProgramOfService	R	Enumeration	n/a	n/a		
2	ClientID	R	String	1	9		Numbers only
4	LOCProgram	R	Enumeration	n/a	n/a		RRR FSP

Ref #	Data Element	R CR O	Data Type	Min Len	Max Len	Restriction	Acceptable Values
5	AssessmentDate	R	Date	10	10	AssessmentDate cannot be a future date.	
6	MORSScoreType	R	String		50		
7	MORSScore	R	String	1	1		Numbers only
8	LOCScore	R	String	1	1		Numbers only
9	Determinant1	R	String	1	1		True/False
10	Determinant2	R	String	1	1		True/False
11	Determinant3	R	String	1	1		True/False
12	Determinant4	R	String	1	1		True/False
13	Determinant5	R	String	1	1		True/False
14	Determinant6	R	String	1	1		True/False
15	Determinant7	R	String	1	1		True/False
16	Determinant8	R	String	1	1		True/False

B.2.2 ADDCLIENTLOC_OUTPUT

Ref #	Data Element	Data Type	Required	MinL	MaxL
1	Acknowledgement	String	Yes	100	500
2	ClientID	String	Yes	1	9
3	SubmissionID	String	Yes	1	n/a

B.2.3 XML SAMPLE OF ADDCLIENTLOC_INPUT

```
<soapenv:Envelope xmlns:soapenv="http://schemas.xmlsoap.org/soap/envelope/"
xmlns:ns="http://b2b.dmh.lacounty.gov/ClientLOCService/201701"
xmlns:mes="http://b2b.dmh.lacounty.gov/ClientLOCService/201701/MessageContextInput"
xmlns:typ="http://b2b.dmh.lacounty.gov/ClientLOCService/201701/types">
  <soapenv:Header/>
  <soapenv:Body>
    <ns:AddClientLOC_Input>
```

```

    <mes:MessageContextInput typ:ProgramID="00108"/>
    <typ:AddLOC ClientID="9999999" LOCProgram="RRR" AssessmentDate="2018-04-01"
ProgramOfService="7277Q">
    <Score MORSScoreType="Older Adult MORS" MORSScore="{DataSource#MORSScore}" LOCscore="1"/>
    <Determinates>
    <Determinate1 DetermineTypeID="1" Value="true"/>
    <Determinate2 DetermineTypeID="2" Value="true"/>
    <Determinate3 DetermineTypeID="3" Value="true"/>
    <Determinate4 DetermineTypeID="4" Value="true"/>
    <Determinate5 DetermineTypeID="5" Value="true"/>
    <Determinate6 DetermineTypeID="6" Value="true"/>
    <Determinate7 DetermineTypeID="7" Value="true"/>
    <Determinate8 DetermineTypeID="8" Value="true"/>
    </Determinates>
    </typ:AddLOC>
  </ns:AddClientLOC_Input>
</soapenv:Body>
</soapenv:Envelope>

```

B.2.4 XML SAMPLE OF ADDCLIENTLOC_OUTPUT

SUCCESSFUL:

```

<s:Envelope xmlns:s="http://schemas.xmlsoap.org/soap/envelope/">
  <s:Body>
    <ns0:AddClientLOC_Output t:ClientID="12002" t:SubmissionID="518"
xmlns:ns0="http://b2b.dmh.lacounty.gov/ClientLOCService/201701"
xmlns:t="http://b2b.dmh.lacounty.gov/ClientLOCService/201701/types"
xmlns:mc="http://b2b.dmh.lacounty.gov/ClientLOCService/201701/MessageContextOutput">
    <mc:MessageContextOutput Acknowledgement="Client LOC record has been created
successfully."/>
    </ns0:AddClientLOC_Output>
  </s:Body>
</s:Envelope>

```

UNSUCCESSFUL:

```

<s:Envelope xmlns:s="http://schemas.xmlsoap.org/soap/envelope/">
  <s:Body>
    <s:Fault>
    <faultcode>XXXX</faultcode>
    <faultstring xml:lang="en-US">Error Message Varies</faultstring>
    </s:Fault>
  </s:Body>
</s:Envelope>

```


B.3 Update

Definition: The UpdateClientLOC operation allows Contract Providers to update the LOC record for existing IBHIS Clients.

Business Use Cases:

- #1. Modify or Update an existing LOC assessment for an existing IBHIS client.
- #2. Correct an erroneous LOC assessment submission for an existing IBHIS client.

Service Action:

UpdateClientLOC operation updates an existing IBHIS Client LOC assessment. Note that each record is identified by a unique SubmissionID. Contract Providers will need to submit this ID in order to update the assessment.

Precondition:

- Contract Providers are authenticated and can provide a valid LOC update request.
- An LOC record exists for a Client under the Contract Provider’s ProgramOfService.
- Contract Providers have performed a GetClientLOCHistory to retrieve existing values. For more information on Get—visit section [GetClientLOCHistory](#)
- Contract Providers know the Client ID for an existing IBHIS Client. This ID can be retrieved from Client Services. For more information regarding Client Services –visit section [E. Client Services](#).

Note:

Restriction: Creation Date for an LOC record cannot be updated.

Update behavior: A full update request is sent everytime an LOC record needs to be updated.

Restriction: ProgramID –SubmissionID association An LOC record can only be updated by the Contract Provider entity that created it.

B.3.1 UPDATESERVICEREQUEST_INPUT

* R = Required; CR = ConditionallyRequired; O = Optional

Ref #	Data Element	R CR O	Data Type	Min Len	Max Len	Restriction	Acceptable Values
1	ProgramID	R	String	5	5		ProgramID configured in BizTalk associated with the Digital Certificate used for authentication.
2	ProgramOf Service	R	Enumeration	n/a	n/a	Must be associated to Contract Provider’s ProgramID	Use dictionary service to retrieve acceptable values. Refer to section E.
3	SubmissionID	R	Int	1	n/a		numbers only
4	LOCProgram	R	Enumeration	n/a	n/a		RRR FSP
5	AssessmentDate	R	Date	10	10	YYYY-MM-DD	
6	MORSScoreType	R	Enumeration	n/a	n/a		Adult MORS Older Adult MORS
7	MORSScore	R	String	1	1		
8	LOCScore	R	String	1	1		
9	Determinant1	R	String	n/a	n/a		True/False
10	Determinant2	R	String	n/a	n/a		True/False

Ref #	Data Element	R CR O	Data Type	Min Len	Max Len	Restriction	Acceptable Values
11	Determinant3	R	String	n/a	n/a		True/False
12	Determinant4	R	String	n/a	n/a		True/False
13	Determinant5	R	String	n/a	n/a		True/False
14	Determinant6	R	String	n/a	n/a		True/False
15	Determinant7	R	String	n/a	n/a		True/False
16	Determinant8	R	String	n/a	n/a		True/False

B.3.2 UPDATECLIENTLOC_OUTPUT

Ref #	Data Element	Data Type	Required	MinL	MaxL
1	ClientID	String	R	1	9
2	SubmissionID	String	R	1	n/a
3	Acknowledgement	String	R	100	500

B.3.3 XML SAMPLE OF UPDATECLIENTLOC_INPUT

```

<soapenv:Envelope xmlns:soapenv="http://schemas.xmlsoap.org/soap/envelope/"
xmlns:ns="http://b2b.dmh.lacounty.gov/ClientLOCService/201701"
xmlns:mes="http://b2b.dmh.lacounty.gov/ClientLOCService/201701/MessageContextInput"
xmlns:typ="http://b2b.dmh.lacounty.gov/ClientLOCService/201701/types">
  <soapenv:Header/>
  <soapenv:Body>
    <ns:UpdateClientLOC_Input>
      <mes:MessageContextInput typ:ProgramID="Varies" />
      <typ:UpdateLOC SubmissionID="1" LOCProgram="FSP" AssessmentDate="2018-04-10"
ProgramOfService="Varies">
        <Score MORSScoreType="Adult MORS" MORSScore="2" LOCScore="5"/>
        <Determinates>
          <Determinate1 DeterminateTypeID="1" Value="false"/>
          <Determinate2 DeterminateTypeID="2" Value="false"/>
          <Determinate3 DeterminateTypeID="3" Value="false"/>
          <Determinate4 DeterminateTypeID="4" Value="false"/>
          <Determinate5 DeterminateTypeID="5" Value="false"/>
          <Determinate6 DeterminateTypeID="6" Value="false"/>
          <Determinate7 DeterminateTypeID="7" Value="false"/>
          <Determinate8 DeterminateTypeID="8" Value="false"/>
        </Determinates>
      </typ:UpdateLOC>
    </ns:UpdateClientLOC_Input>
  </soapenv:Body>
</soapenv:Envelope>

```

B.3.4 XML STRUCTURE UPDATECLIENTLOC_OUTPUT

SUCCESSFUL:

```
<s:Envelope xmlns:s="http://schemas.xmlsoap.org/soap/envelope/">
  <s:Body>
    <ns0:UpdateClientLOC_Output t:ClientID="Varies" t:SubmissionID="Varies"
xmlns:ns0="http://b2b.dmh.lacounty.gov/ClientLOCService/201701"
xmlns:t="http://b2b.dmh.lacounty.gov/ClientLOCService/201701/types"
xmlns:mc="http://b2b.dmh.lacounty.gov/ClientLOCService/201701/MessageContextOutput">
      <mc:MessageContextOutput Acknowledgement="Client LOC record has been updated successfully."/>
    </ns0:UpdateClientLOC_Output>
  </s:Body>
</s:Envelope>
```

UNSUCCESSFUL:

```
<s:Envelope xmlns:s="http://schemas.xmlsoap.org/soap/envelope/">
  <s:Body>
    <s:Fault>
      <faultcode>XXXX</faultcode>
      <faultstring xml:lang="en-US">Error Message Varies</faultstring>
    </s:Fault>
  </s:Body>
</s:Envelope>
```

C. Error Handling

Following table lists the most common errors along with reasons and corrective actions.

Error Code	Operation	Error Message	Reason	Corrective Action
s:Client	All operations	Authorization failed. Unauthorized access to this LACDMH web service is prohibited.	ProgramID not associated with the digital certificate used.	ProgramID tied to the TP's digital certificate needs to be used.
-1000	All operations.	<h2>403 - Forbidden: Access is denied.</h2><h3>You do not have permission to view this directory or page using the credentials that you supplied.</h3>	Digital certificate missing.	Install and set up the LAC DMH issued digital certificate.
-1000	All operations	The '<data-attribute-name>' attribute has an invalid value according to its data type.	Either invalid value or no value submitted for the stated data attribute.	Enter the acceptable valid value.
-1000	All operations.	The <name of the data attribute> attribute is not declared.	Submitted REQUEST did not conform to the expected xml structure based on the wsdl.	Verify the xml structure is correct by LOC Services wsdl definition (update the definition if needed), remove the element(s) as necessary and re-submit the call.
-1000	All operations	The required attribute <name of the data attribute> is missing.	Submitted REQUEST does not contain the required data attribute specified.	Enter the required data attribute with a valid value.
-1000	All operations.	Details: The element <name of the element> in namespace <namespace address> has invalid child element <name of the child element> in namespace <namespace address>. List of possible elements expected: <name of the element> in namespace <namespace address>	Submitted REQUEST did not conform to the expected structure based on the LOC wsdl.	Verify the xml structure is correct by LOC Services wsdl definition (update the definition if needed), remove and add any elements as necessary and re-submit the call.

Error Code	Operation	Error Message	Reason	Corrective Action
-1000	All operations.	Finding the document specification by message type..... failed. Verify the schema deployed properly.	Submitted REQUEST is using an older version of LOC Services wsdl	Update the LOC Services wsdl to the latest version. Use the URL from Appendix. Click HERE .
-1000	All operations.	Details: The <name of the data attribute> attribute is invalid - The value <entered value> is invalid according to its datatype <data type> - The Enumeration constraint failed.	Submitted value is not found in the acceptable list of values (dictionary).	Enter a value from the acceptable list of values (dictionary).
-1000	All operations.	Details: The <name of the data attribute> attribute is invalid - The value <entered value> is invalid according to its datatype <data type> - The actual length is greater than the MaxLength value.	Length of submitted value is longer than the allowed maximum length.	Enter a value that is within the maximum length.
-1000	All operations.	Details: The <name of the data attribute> attribute is invalid - The value <entered value> is invalid according to its datatype <data type> - The actual length is not equal to the specified length.	Submitted value is not equal to the specified fixed length--such as: Phone Number, NPI	Enter a value that conforms to the fixed length.
-1000	All operations.	Details: The <name of the data attribute> attribute is invalid - The value <entered value> is invalid according to its datatype <data type> - The Pattern constraint failed.	1. Submitted data attribute value has characters not allowed 2. REQUEST has an optional non-string-type data attribute empty	1. Check the submitted value to verify it conforms to the data type/format/restriction applied by LOC Services 2. Remove the non-string-type optional data attribute from the operation's REQUEST xml.
-1000	All operations	The source was not found, but some or all event logs could not be searched. To create the source, you need permission to read all event logs to make sure that the new source name is	Digital Certificate is corrupted and/or DMH BizTalk profile is corrupted.	Contact DMH by opening a Heat Ticket.

Error Code	Operation	Error Message	Reason	Corrective Action
		unique. Inaccessible logs: Security.		
-1000	Get operation	No records found. Or Records not found.	No match found.	If the Contract Provider is certain that a result/match should be returned, then contact DMH (open a Heat Ticket providing the REQUEST and RESPONSE xmls).
-1000	Add and Update	ProgramOfService is not associated to ProgramID in the Message Context.	Submitted ProgramOfService code is not tied to Contract Provider's ProgramID.	Enter an acceptable ProgramOfService associated to ProgramID
-1000	Add and Update	AssessmentDate cannot be a future date.	Submitted date as the AssessmentDate is a future date from current date.	Latest date that can be sent as an AssessmentDate is today's date.

D. Dictionary Service

Some dictionary values have been removed from the WSDL since these values tend to be updated more often. As a result DMH implemented a dictionary value lookup solution called 'Dictionary Service' so that Contract Providers can retrieve the acceptable values for certain data attribute without having to make direct changes to the WSDL. The enumerated values for the following data attributes can be retrieved through Dictionary Service:

- ProgramOfService (Enter ProgramOfServiceCode to retrieve the values)
- LOCProgram (Enter LOCProgram to retrieve the values)
- MORSScoreType (Enter MORSScoreType to retrieve the values)

Follow the steps below:

Step #	Action
Step # 1	Load the Dictionary Services WSDL from the following URL: https://b2b.dmh.lacounty.gov/LookupService/LookupServiceInterface.svc
Step # 2	Enter 'LOC' for the 'Service'.
Step # 3	Enter data suggested code listed above in 'Type' to get the enumerated list for a specific data attribute or leave 'Type' blank to get all dictionaries for LOC data attributes available through Dictionary Service.
Step # 4	Submit the call.
Step # 5	Retrieve the values from the output.

E. Client Services

When the client is an existing IBHIS client, DMH expects the Contract Providers to retrieve necessary information from IBHIS in order to submit Client's LOC. Client Services solution can be utilized to gather the following information from IBHIS (provided that the Contact Provider has the necessary access):

ClientID

Contract Providers can perform a Client search by *SearchClient* call to retrieve the ClientID (IBHIS client ID). Then use this ID in *GetClientDetails* call to get other demographic information from IBHIS.

For more information on Client Services check the following DMH website pages:

http://lacdmh.lacounty.gov/hipaa/IBHIS_EDI_Technical_Specifications.htm

Appendix

WSDL LOCATIONS

- WSDL:**
 LACDMH LOC Services WSDL URLs are as follows-
 TST_WSDL (For Release Candidate (RC) and TP vendors to build the new features of WSDL)
<https://b2btst.dmh.lacounty.gov/LOCService/LOCServiceInterface.svc?SingleWsd>
 QA_WSDL (For Testing and Certification)
<https://b2bqa.dmh.lacounty.gov/LOCService/LOCServiceInterface.svc?SingleWsd>
 Production_WSDL (For going LIVE)
<https://b2b.dmh.lacounty.gov/LOCService/LOCServiceInterface.svc?SingleWsd>

SUMMARY OF CHANGES IN VERSION 1.0

Operation(s) Items Section	Description of Change(s)
All sections	Initial version

| End of the Document |