

# Managing and Adapting Practice

## LA PEI Aggregate Program Performance Dashboard Report Jan/Feb 2013 Data Submission

### Prepared by the California Institute for Mental Health (CiMH)

This program performance dashboard report describes children served through the Managing and Adapting Practice (MAP) treatment model in agencies receiving Prevention and Early Intervention (PEI) funding in Los Angeles County.

**Sixty-eight LA PEI-funded private-provider agencies and nine LAC DMH directly-operated clinics submitted data to CIMH in January and February of 2013, reflecting, at minimum, children served from the inception of their MAP programs through December of 2012. This report presents data from:**

- AADAP, Inc.
- Alma Family Services
- Almansor Center
- Amanacer
- American Indian Counseling Center (DMH)
- Augustus F. Hawkins MHS (DMH)
- Aviva
- Bienvenidos Children's Center, Inc.
- California Behavioral Health Care
- Child & Family Center
- Child and Family Guidance Center
- ChildNet
- Children's Bureau
- Children's Hospital, L.A.
- Children's Institute, Inc.
- CIFHS – The Family Center
- Community Family Guidance Center
- Compton Mental Health Center (DMH)
- Counseling4Kids
- David and Margaret
- Didi Hirsch
- D'Veal Family and Youth Services
- Edelman Westside Child & Family (DMH)
- Eisner Pediatric & Family Medical Center
- El Centro del Pueblo
- EMQ/FF Hollygrove
- ENKI Health and Research Systems
- Exceptional Children's Foundation
- Five Acres
- Foothill Family Services
- Gateways Hospital & Mental Health Center
- Hathaway-Sycamores Child & Family Services
- Helpline Youth Counseling
- Hillside
- Hillview Mental Health Center
- Institute for Multicultural Counseling & Educational Services
- Koreatown Youth & Community Center
- Leroy Haynes Center
- Long Beach Child and Adolescent Program (DMH)
- Los Angeles Child Guidance Clinic
- Masada Homes
- McKinley Children's Center
- Optimist Youth Homes & Family Services
- Pacific Clinics
- Pacific Asian Counseling Services
- Pacific Lodge Youth Services
- Para Los Ninos
- Pasadena Unified School District
- Penny Lane
- Prototypes
- Providence Community Services
- Rosemary Children's Services
- Roybal Family MHS (DMH)
- Roybal School-Based MHS (DMH)
- San Antonio Mental Health Center (DMH)
- San Fernando Mental Health (DMH)
- San Fernando Valley Community Mental Health Center
- San Gabriel Children's Center
- Shields for Families
- South Bay Children's Center
- South Central Health & Rehabilitation Center
- Special Service for Groups
- SPIRITT
- St. Anne's
- St. John's
- Star View Community Services
- Stirling Behavioral Health
- Tarzana Treatment Centers
- The Guidance Center
- The Help Group
- The Whole Child
- Tobinworld
- Trinity Youth Services
- UCLA Ties for Adoption
- United American Indian Involvement
- VIP Community Mental Health Center
- Vista del Mar

This dashboard report reflects a total of **11,634** clients referred to MAP programs offered by these **68** private-provider agencies and **nine** directly-operated DMH clinics.

	<b>Entry Rate</b>	<b>Dropout Rate</b>
<b>Overall MAP</b>	95.9% (n=11,162)	25.8% (n=2,883)
<b>Anxiety</b>	-	23.4% (n=582)
<b>Depression</b>	-	29.9% (n=1,099)
<b>Disruptive Behavior</b>	-	32.8% (n=1,671)
<b>Trauma</b>	-	28.7% (n=145)

Note1: Overall MAP Entry Rate is defined as clients who were referred to MAP and have a first session documented in one of the four LA PEI MAP treatment foci (anxiety, depression, disruptive behavior, or trauma).

Note2: It is not possible to calculate Entry Rate by Treatment Focus because the data collection protocol does not track reason for referral to MAP.

Note3: Overall MAP Dropout Rate is defined as clients who entered LA PEI MAP but did not complete the full intervention as determined by the therapist.

Note4: Each target-specific Dropout Rate is defined as clients who have a first session documented in the treatment focus, but did not complete the full intervention targeted on that treatment focus as determined by the therapist.

	<b>Focus #1 100% (n=11,146)</b>	<b>Focus #2 5.4% (n=599)</b>	<b>Focus #3 0.3% (n=39)</b>	<b>Focus #4 &lt;0.1% (n=4)</b>
<b>Anxiety</b>	20.7% (n=2,305)	28.9% (n=173)	25.6% (n=10)	25.0% (n=1)
<b>Depression</b>	31.2% (n=3,482)	32.9% (n=197)	10.3% (n=4)	-
<b>Disruptive Behavior</b>	44.0% (n=4,910)	30.1% (n=180)	51.3% (n=20)	-
<b>Trauma</b>	4.0% (n=449)	8.2% (n=49)	12.8% (n=5)	75.0% (n=3)

Note: Sixteen clients had service delivery data entered for a valid treatment target at Focus #2 and/or Focus #3, without data entered for Focus #1. This explains the difference between 11,162 clients who entered MAP and 11,146 clients with a valid Focus #1.

	Age	Gender		Ethnicity				
	(average age, in years)	Female	Male	African-American	Asian/Pacific Islander	Caucasian	Hispanic/Latino	Other
<b>Overall MAP (N=11,162)</b>	11.7 (n=10,958)	43.1% (n=4,815)	56.8% (n=6,338)	15.2% (n=1,701)	1.2% (n=131)	8.0% (n=897)	70.8% (n=7,906)	4.6% (n=508)
<b>Anxiety (N=2,485)</b>	11.4 (n=2,438)	49.8% (n=1,237)	50.1% (n=1,246)	9.1% (n=225)	1.5% (n=38)	9.5% (n=236)	74.5% (n=1,852)	5.3% (n=132)
<b>Depression (N=3,678)</b>	13.5 (n=3,595)	55.4% (n=2,037)	44.6% (n=1,639)	12.6% (n=465)	1.3% (n=49)	7.9% (n=290)	73.5% (n=2,703)	4.5% (n=166)
<b>Disruptive Behavior (N=5,096)</b>	10.7 (n=4,970)	31.5% (n=1,607)	68.4% (n=3,484)	19.8% (n=1,007)	0.9% (n=45)	7.9% (n=402)	67.3% (n=3,428)	4.1% (n=209)
<b>Trauma (N=506)</b>	12.0 (n=485)	50.2% (n=254)	49.8% (n=252)	18.6% (n=94)	1.8% (n=9)	11.7% (n=59)	63.4% (n=321)	3.0% (n=15)

Note1: Percentages may not total 100 due to missing data.

Note2: Age calculated as the difference between the date of the first session and the client's date of birth.

	Anxiety Disorders	Depressive Disorders	Disruptive Behavior Disorders	Post-Traumatic Stress Disorder	Attention Deficit/Hyperactivity Disorders	Psychotic Disorders	Other	Missing
<b>Overall MAP (N=11,162)</b>	16.0% (n=1,783)	33.9% (n=3,786)	29.0% (n=3,242)	3.1% (n=350)	12.7% (n=1,413)	2.0% (n=228)	2.8% (n=316)	0.4% (n=44)
<b>Anxiety (N=2,485)</b>	62.1% (n=1,542)	17.3% (n=429)	6.2% (n=154)	3.1% (n=76)	6.2% (n=153)	1.8% (n=44)	3.0% (n=75)	0.5% (n=12)
<b>Depression (N=3,678)</b>	3.4% (n=126)	79.6% (n=2,929)	8.0% (n=295)	1.3% (n=46)	3.2% (n=118)	2.4% (n=87)	1.7% (n=64)	0.4% (n=13)
<b>Disruptive Behavior (N=5,096)</b>	3.4% (n=171)	10.5% (n=537)	56.1% (n=2,859)	1.4% (n=71)	23.0% (n=1,172)	2.0% (n=100)	3.3% (n=170)	0.3% (n=16)
<b>Trauma (N=506)</b>	9.9% (n=50)	25.3% (n=128)	12.3% (n=62)	37.7% (n=191)	4.9% (n=25)	3.8% (n=19)	4.5% (n=23)	1.6% (n=8)

	<b>Clients With At Least One* Valid Required Outcome Measure of General Mental Health Functioning (YOQ or YOQ-SR) Prior to Treatment</b>	<b>Clients With At Least One* Valid Required Target-Specific Outcome Measure Completed Prior to Treatment</b>
<b>Overall MAP (N=11,162)</b>	80.9% (n=8,648)	60.9% (n=6,642)
<b>Anxiety (N=2,485)</b>	80.1% (n=1,922)	70.3% (n=1,574)
<b>Depression (N=3,678)</b>	81.6% (n=2,884)	68.0% (n=1,702)
<b>Disruptive Behavior (N=5,096)</b>	81.4% (n=3,959)	57.2% (n=2,671)
<b>Trauma (N=506)</b>	77.8% (n=374)	61.0% (n=294)

\*Including parent/caregiver report and/or child/youth self-report. A measure is valid if it has been administered within the appropriate age range, has a valid score, and is administered for the appropriate treatment target. The denominator for each percentage includes children who entered that particular treatment focus and are within the valid age range for a particular measure(s).

\*Please see Appendix A. for a description of the four target-specific outcome measures and the measure of general mental health functioning.

	<b>Number of Clients who Completed</b>	<b>Average Length of Treatment</b>	<b>Average Number of Sessions</b>
<b>Overall MAP (N=11,162)</b>	(n=2,580)	34.9 weeks ( $\pm 20.3$ ) Range: 1 - 136 weeks (n=2,516)	29.9 ( $\pm 20.3$ ) Range: 1 - 170 sessions (n=2,526)
<b>Anxiety (N=2,485)</b>	(n=684)	32.2 weeks ( $\pm 19.0$ ) Range: 2 - 105 weeks (n=673)	26.6 ( $\pm 17.9$ ) Range: 1 - 125 sessions (n=668)
<b>Depression (N=3,678)</b>	(n=975)	33.1 weeks ( $\pm 19.0$ ) Range: 1 - 105 weeks (n=943)	27.9 ( $\pm 18.5$ ) Range: 2 - 156 sessions (n=949)
<b>Disruptive Behavior (N=5,096)</b>	(n=1,226)	35.2 weeks ( $\pm 20.9$ ) Range: 1 - 136 weeks (n=1,186)	21.2 ( $\pm 21.2$ ) Range: 1 - 170 sessions (n=1,192)
<b>Trauma (N=506)</b>	(n=115)	31.5 weeks ( $\pm 17.9$ ) Range: 3 - 84 weeks (n=112)	29.0 ( $\pm 17.6$ ) Range: 2 - 73 sessions (n=112)

Note1: Completion is defined as having a “yes” documented for completion status.

Note2: Length of treatment is calculated as the difference between the date of the last session and the date of the first session within each treatment focus; and, for Overall MAP it is summed across treatment foci.

Note3:  $\pm$  indicates the standard deviation

<b>Table 7. Overall LA PEI MAP Outcome Data<sup>±</sup> – Clients who Completed MAP (n=2,580)</b>					
	<b>Youth Outcome Questionnaire (YOQ and YOQ-SR) Total Score</b>				
	<b>Percent Improvement<sup>±</sup> from the Average Pre- MAP Score to the Average Post-MAP Score</b>	<b>Effect Size Estimate<sup>±</sup> (Cohen's <i>d</i>)</b>	<b>Percent of Clients Showing Reliable Change<sup>±</sup> from Pre-MAP to Post-MAP</b>		
			<b>Positive Change</b>	<b>No Change</b>	<b>Negative Change</b>
<b>Parent/Caregiver</b>	42.4%* (n=1,172) [pre=55.8]	.76	60.9% (n=714)	32.1% (n=376)	7.0% (n=82)
<b>Child/Youth</b>	39.3%* (n=482) [pre=55.4]	.80	58.5% (n=282)	33.8% (n=163)	7.7% (n=37)

<sup>±</sup>Please see Appendix A. for a description of the MAP outcome measures and the outcome indicators (percent improvement in average scores; effect size estimate; and, percent of clients showing reliable change).

Note: Follow-up analyses of aggregate data revealed no significant differences in entry rate, dropout rate, duration of therapy, number of sessions, or change in outcomes by gender or ethnicity.

\*Paired t-test indicates a statistically significant difference,  $p \leq .01$ .

<b>Table 8. LA PEI MAP Outcome Data<sup>±</sup> – Clients who Completed Anxiety Treatment (n=684)</b>					
<b>Youth Outcome Questionnaire (YOQ and YOQ-SR) Total Score</b>					
	<b>Percent Improvement<sup>±</sup> from the Average Pre- Score to the Average Post- Score</b>	<b>Effect Size Estimate<sup>±</sup> (Cohen's <i>d</i>)</b>	<b>Percent of Clients Showing Reliable Change<sup>±</sup> from Pre- to Post-</b>		
			<b>Positive Change</b>	<b>No Change</b>	<b>Negative Change</b>
<b>Parent/Caregiver</b>	43.5%* (n=303) [pre=49.8]	.70	58.4% (n=177)	37.6% (n=114)	4.0% (n=12)
<b>Child/Youth</b>	40.0%* (n=104) [pre=57.6]	.94	69.2% (n=72)	22.1% (n=23)	8.7% (n=9)
<b>Revised Children's Anxiety and Depression Scale (RCADS-P/RCADS) Total Anxiety Score</b>					
	<b>Percent Improvement<sup>±</sup> from the Average Pre- Score to the Average Post- Score</b>	<b>Effect Size Estimate<sup>±</sup> (Cohen's <i>d</i>)</b>	<b>Percent of Clients Showing Reliable Change<sup>±</sup> from Pre- to Post-</b>		
			<b>Positive Change</b>	<b>No Change</b>	<b>Negative Change</b>
<b>Parent/Caregiver</b>	37.7%* (n=227) [pre=29.9]	.58	39.6% (n=90)	56.4% (n=128)	4.0% (n=9)
<b>Child/Youth</b>	37.7%* (n=234) [pre=32.1]	.65	43.6% (n=102)	53.4% (n=125)	3.0% (n=7)

<sup>±</sup>Please see Appendix A. for a description of the MAP outcome measures and the outcome indicators (percent improvement in average scores; effect size estimate; and, percent of clients showing reliable change).

\*Paired t-test indicates a statistically significant difference,  $p \leq .01$ .

<b>Table 9. LA PEI MAP Outcome Data<sup>±</sup> – Clients who Completed Depression Treatment (n=975)</b>					
<b>Youth Outcome Questionnaire (YOQ and YOQ-SR) Total Score</b>					
	<b>Percent Improvement<sup>±</sup> from the Average Pre- Score to the Average Post- Score</b>	<b>Effect Size Estimate<sup>±</sup> (Cohen's <i>d</i>)</b>	<b>Percent of Clients Showing Reliable Change<sup>±</sup> from Pre- to Post-</b>		
			<b>Positive Change</b>	<b>No Change</b>	<b>Negative Change</b>
<b>Parent/Caregiver</b>	46.4%* (n=437) [pre=55.3]	.80	61.3% (n=268)	31.8% (n=139)	6.9% (n=30)
<b>Child/Youth</b>	44.7%* (n=249) [pre=63.5]	.97	64.7% (n=161)	30.5% (n=76)	4.8% (n=12)
<b>Patient Health Questionnaire (PHQ-9) Total Score</b>					
	<b>Percent Improvement<sup>±</sup> from the Average Pre- Score to the Average Post- Score</b>	<b>Effect Size Estimate<sup>±</sup> (Cohen's <i>d</i>)</b>	<b>Percent of Clients Showing Reliable Change<sup>±</sup> from Pre- to Post-</b>		
			<b>Positive Change</b>	<b>No Change</b>	<b>Negative Change</b>
<b>Child/Youth</b>	57.1%* (n=257) [pre=9.1]	.89	36.2% (n=93)	62.6% (n=161)	1.2% (n=3)

<sup>±</sup>Please see Appendix A. for a description of the MAP outcome measures and the outcome indicators (percent improvement in average scores; effect size estimate; and, percent of clients showing reliable change).

\*Paired t-test indicates a statistically significant difference,  $p \leq .01$ .

<b>Table 10. LA PEI MAP Outcome Data<sup>±</sup> – Clients who Completed Disruptive Behavior Treatment (n=1,226)</b>					
<b>Youth Outcome Questionnaire (YOQ and YOQ-SR) Total Score</b>					
	<b>Percent Improvement<sup>±</sup> from the Average Pre-Score to the Average Post- Score</b>	<b>Effect Size Estimate<sup>±</sup> (Cohen's <i>d</i>)</b>	<b>Percent of Clients Showing Reliable Change<sup>±</sup> from Pre- to Post-</b>		
			<b>Positive Change</b>	<b>No Change</b>	<b>Negative Change</b>
<b>Parent/Caregiver</b>	39.9%* (n=569) [pre=59.6]	.79	64.7% (n=368)	25.8% (n=147)	9.5% (n=54)
<b>Child/Youth</b>	28.9%* (n=198) [pre=49.9]	.54	47.5% (n=94)	40.4% (n=80)	12.1% (n=24)
<b>Eyberg Child Behavior Inventory (ECBI) and Sutter-Eyberg Student Behavior Inventory (SESBI) Raw Scores</b>					
	<b>Percent Improvement<sup>±</sup> from the Average Pre-Score to the Average Post- Score</b>	<b>Effect Size Estimate<sup>±</sup> (Cohen's <i>d</i>)</b>	<b>Percent of Clients Showing Reliable Change<sup>±</sup> from Pre- to Post-</b>		
			<b>Positive Change</b>	<b>No Change</b>	<b>Negative Change</b>
<b>Parent/Caregiver</b>	<b>Intensity Raw Score</b>	.81	56.0% (n=228)	38.1% (n=155)	5.9% (n=24)
	25.2%* (n=407) [pre=127.4]				
<b>Parent/Caregiver</b>	<b>Problem Raw Score</b>	.85	53.3% (n=210)	41.9% (n=165)	4.8% (n=19)
	48.2%* (n=394) [pre=16.2]				
<b>Teacher/Staff</b>	<b>Intensity Raw Score</b>				
	<i>n too small</i>				
<b>Teacher/Staff</b>	<b>Problem Raw Score</b>				
	<i>n too small</i>				

<sup>±</sup>Please see Appendix A. for a description of the MAP outcome measures and the outcome indicators (percent improvement in average scores; effect size estimate; and, percent of clients showing reliable change).

Note: Minimum n for any aggregate pre/post outcome analysis is 20.

\*Paired t-test indicates a statistically significant difference,  $p \leq .01$ .

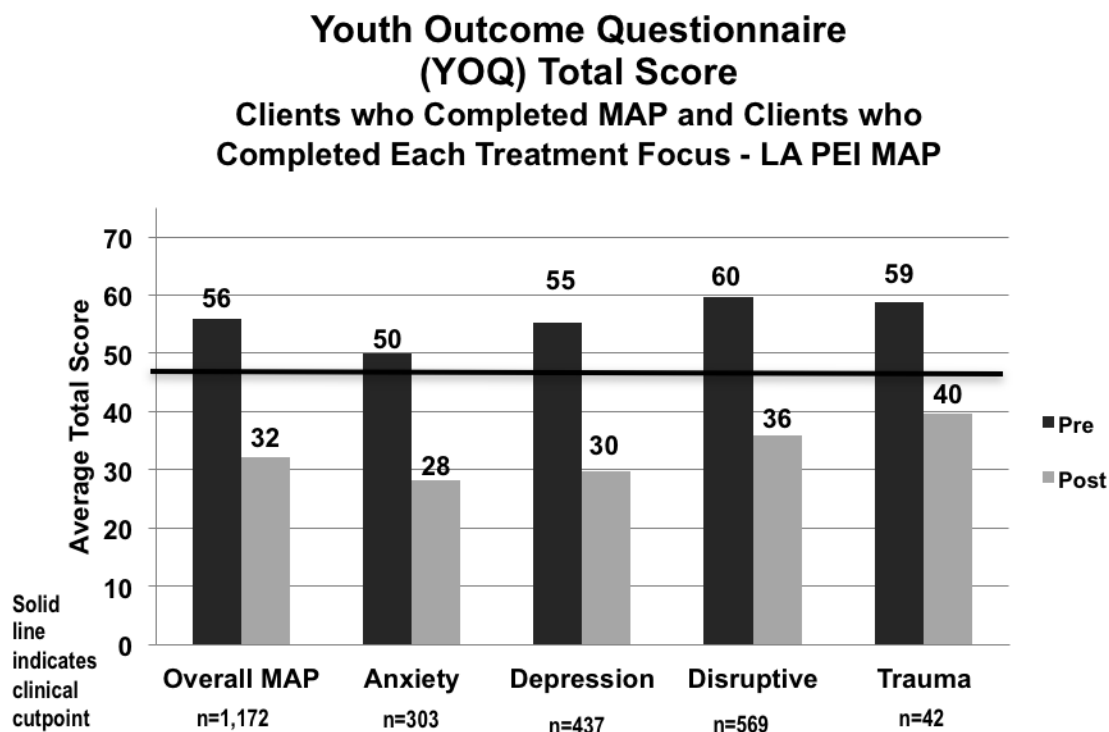
<b>Table 11. LA PEI MAP Outcome Data<sup>±</sup> – Clients who Completed Trauma Treatment (n=115)</b>					
<b>Youth Outcome Questionnaire (YOQ and YOQ-SR) Total Score</b>					
	<b>Percent Improvement<sup>±</sup> from the Average Pre-Score to the Average Post- Score</b>	<b>Effect Size Estimate<sup>±</sup> (Cohen's <i>d</i>)</b>	<b>Percent of Clients Showing Reliable Change<sup>±</sup> from Pre- to Post-</b>		
			<b>Positive Change</b>	<b>No Change</b>	<b>Negative Change</b>
<b>Parent/Caregiver</b>	32.5%* (n=42) [pre=58.8]	.59	52.4% (n=22)	33.3% (n=14)	14.3% (n=6)
<b>Child/Youth</b>	36.9%* (n=23) [pre=49.1]	.79	69.6% (n=16)	17.4% (n=4)	13.0% (n=3)
<b>UCLA Post Traumatic Stress Disorder Reaction Index (PTSD-RI) Total Score</b>					
	<b>Percent Improvement<sup>±</sup> from the Average Pre-Score to the Average Post- Score</b>	<b>Effect Size Estimate<sup>±</sup> (Cohen's <i>d</i>)</b>	<b>Percent of Clients Showing Reliable Change<sup>±</sup> from Pre- to Post-</b>		
			<b>Positive Change</b>	<b>No Change</b>	<b>Negative Change</b>
<b>Parent/Caregiver</b>	32.0%* (n=37) [pre=24.3]	.42	13.5% (n=5)	83.8% (n=31)	2.7% (n=1)
<b>Child/Youth</b>	37.3%* (n=41) [pre=25.3]	.73	36.6% (n=15)	58.5% (n=24)	4.9% (n=2)

<sup>±</sup>Please see Appendix A. for a description of the MAP outcome measures and the outcome indicators (percent improvement in average scores; effect size estimate; and, percent of clients showing reliable change).

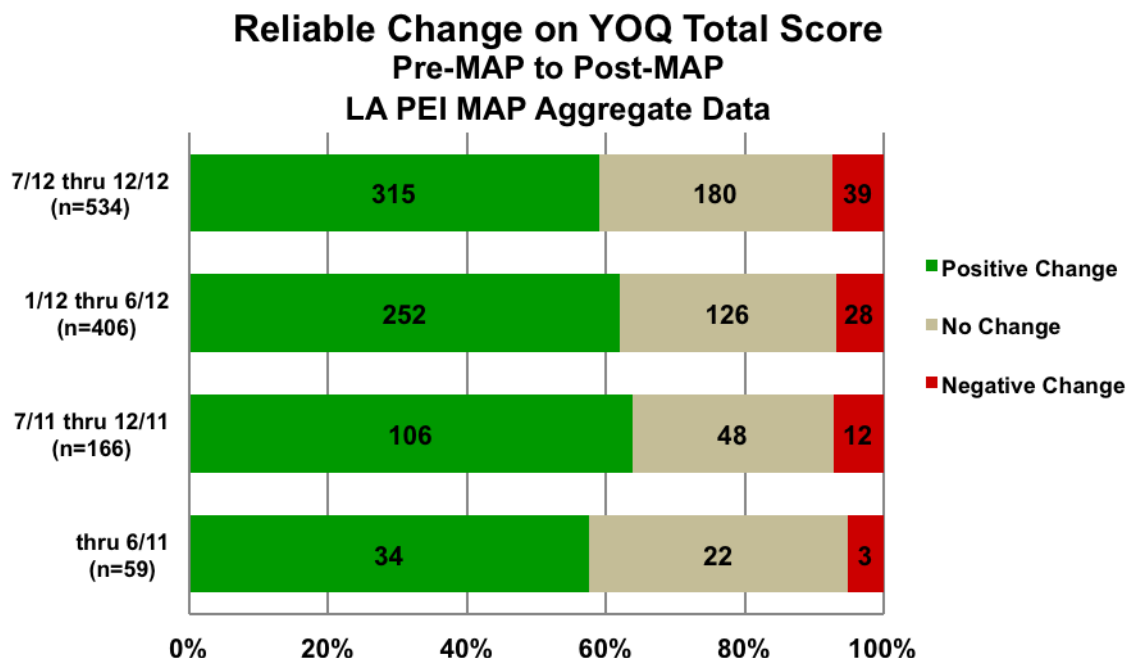
\*Paired t-test indicates a statistically significant difference,  $p \leq .01$ .



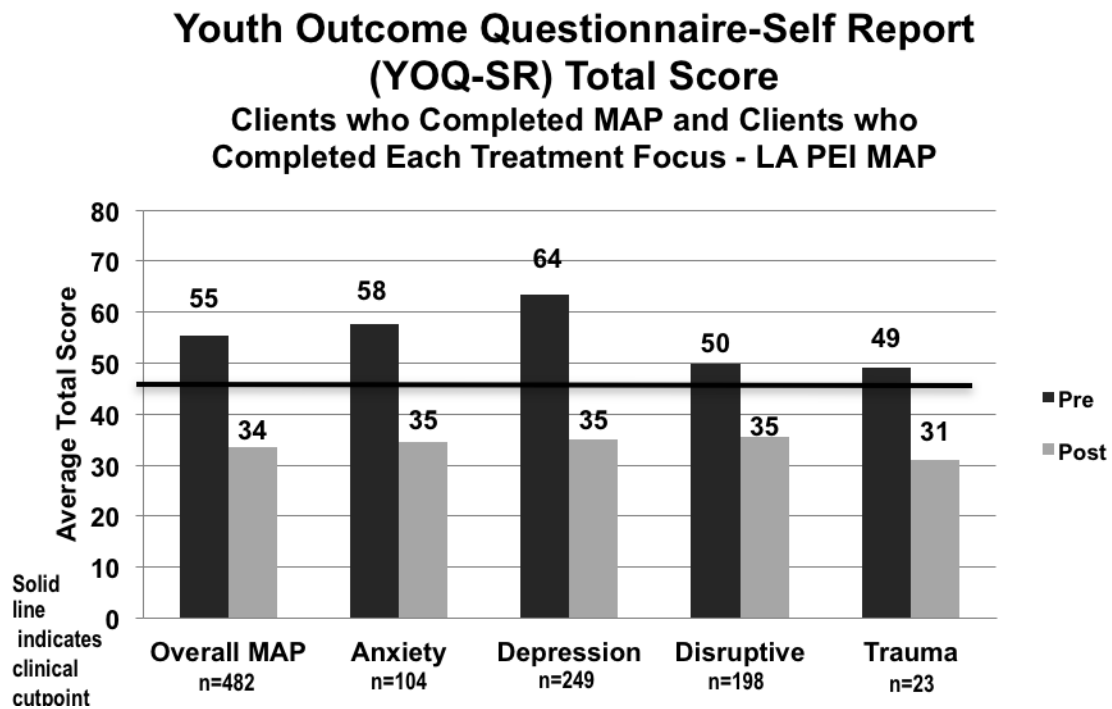
**Graph 1. Overall LA PEI MAP Outcomes: Average YOQ Total Scores – Clients who Completed MAP and Clients who Completed Each of the Four Treatment Foci**



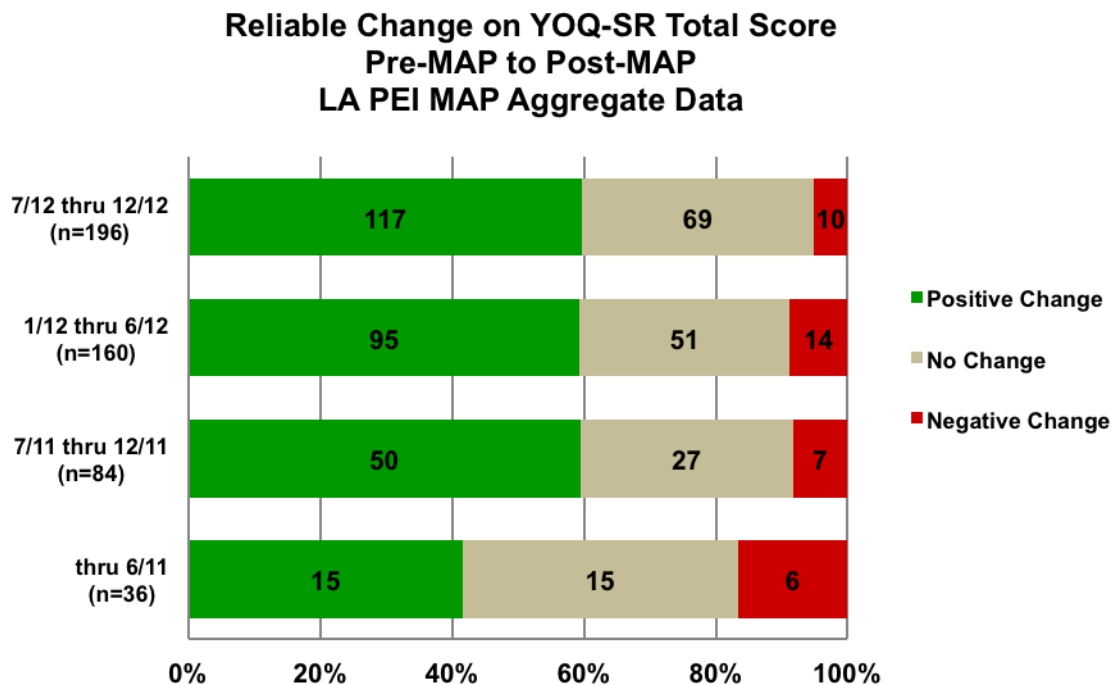
**Graph 2. Overall LA PEI MAP Outcomes: Percent of Clients Showing Reliable Change on YOQ Total Score**



Graph 3. Overall LA PEI MAP Outcomes: Average YOQ-SR Total Scores – Clients who Completed MAP and Clients who Completed Each of the Four Treatment Foci

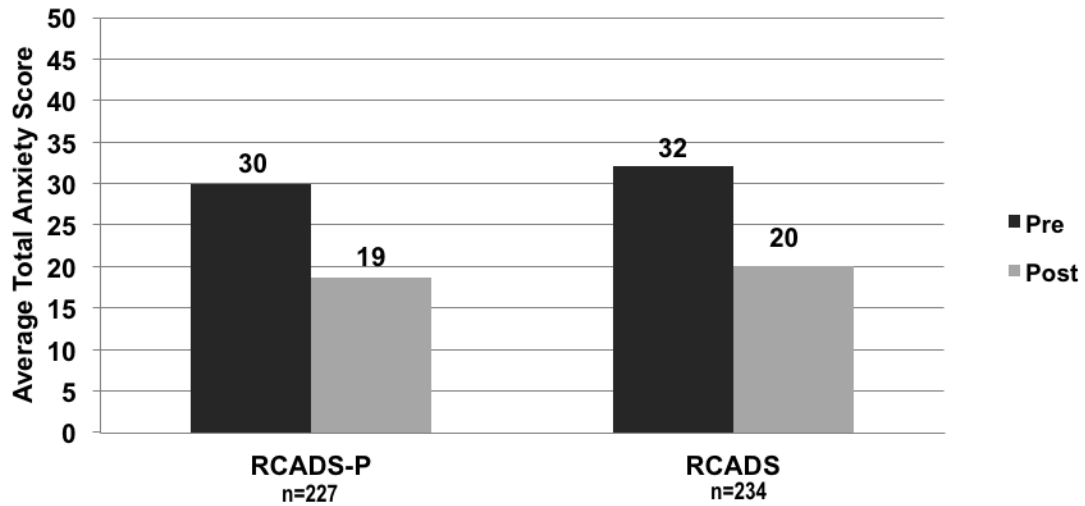


Graph 4. MAP Outcomes: Number and Percent of Clients who Completed MAP Showing Reliable Change on YOQ-SR Total Score



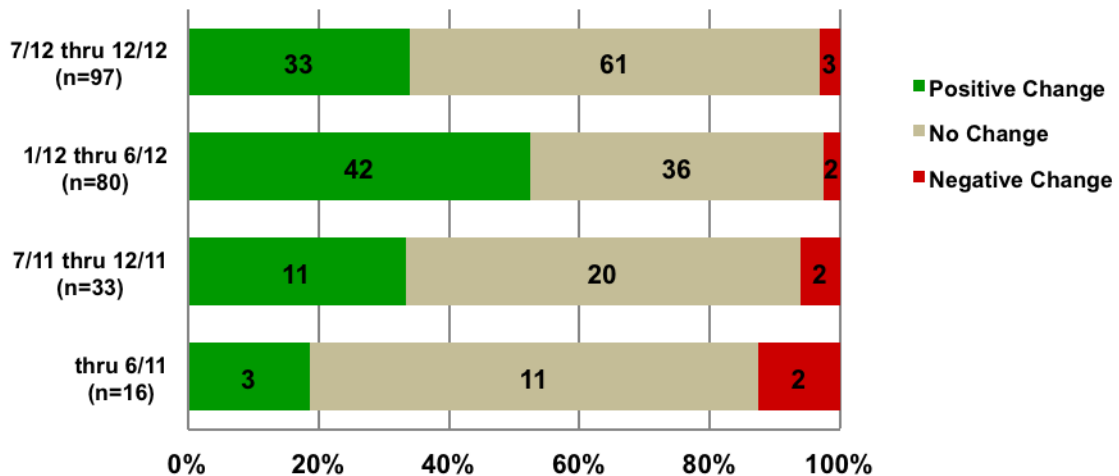
Graph 5. LA PEI MAP Outcomes: Average RCADS-P and RCADS Total Anxiety Scores – Clients who Completed Anxiety Treatment (n=684)

### RCADS-P and RCADS Total Anxiety Scores LA PEI MAP Data - Anxiety

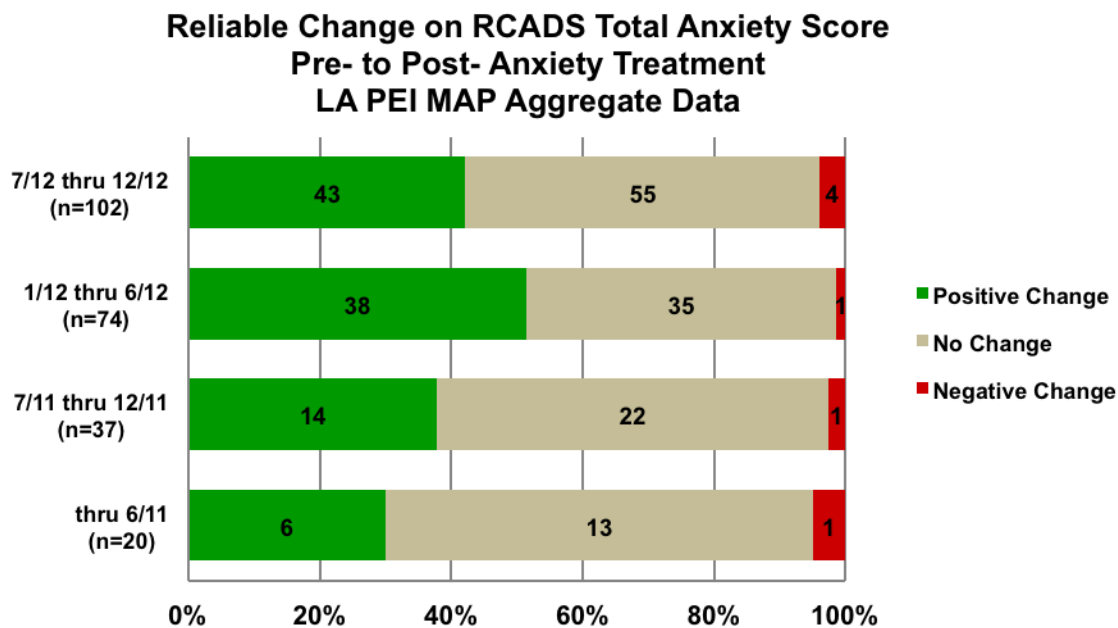


Graph 6. LA PEI MAP Outcomes: Percent of Clients Who Completed Anxiety Treatment Showing Reliable Change on RCADS-P Total Anxiety Score

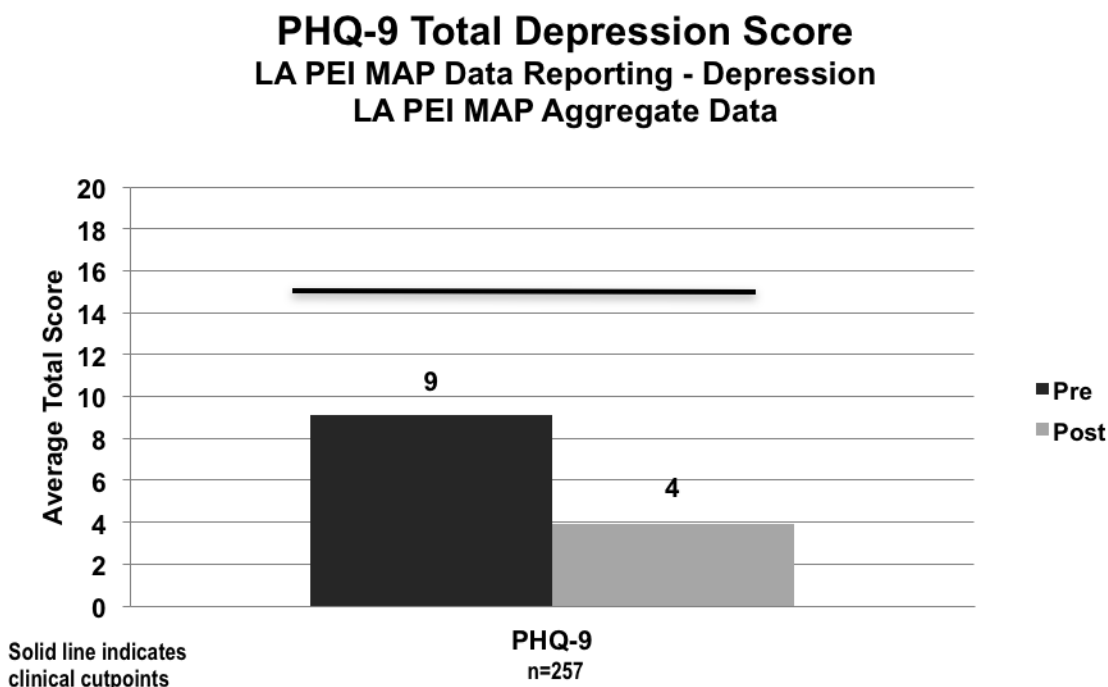
### Reliable Change on RCADS-P Total Anxiety Score Pre- to Post- Anxiety Treatment LA PEI MAP Aggregate Data



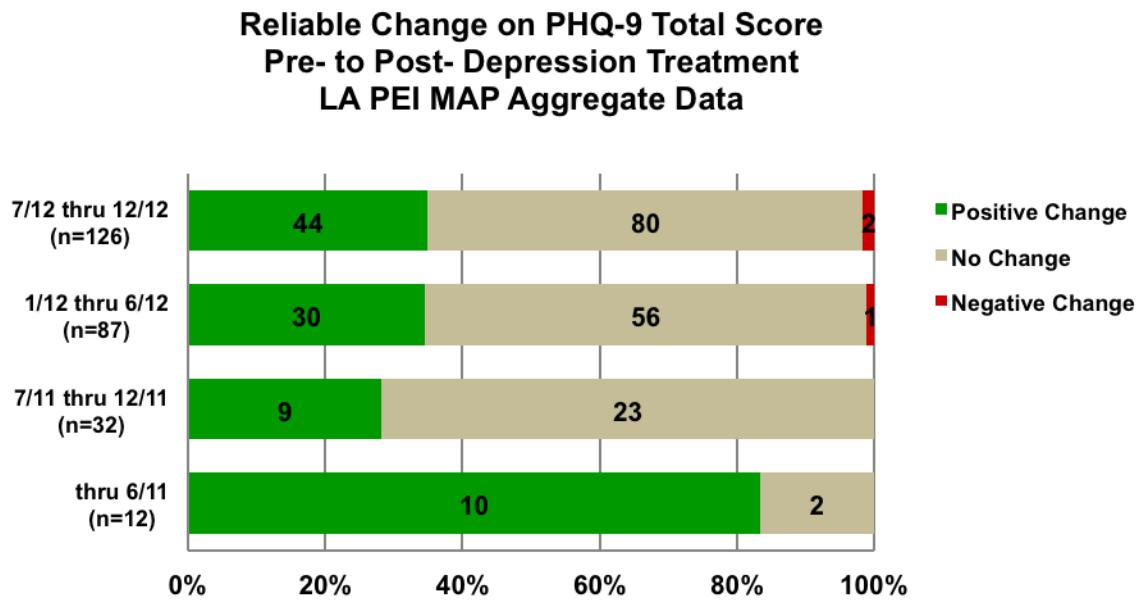
**Graph 7. LA PEI MAP Outcomes: Percent of Clients Who Completed Anxiety Treatment Showing Reliable Change on RCADS Total Anxiety Score**



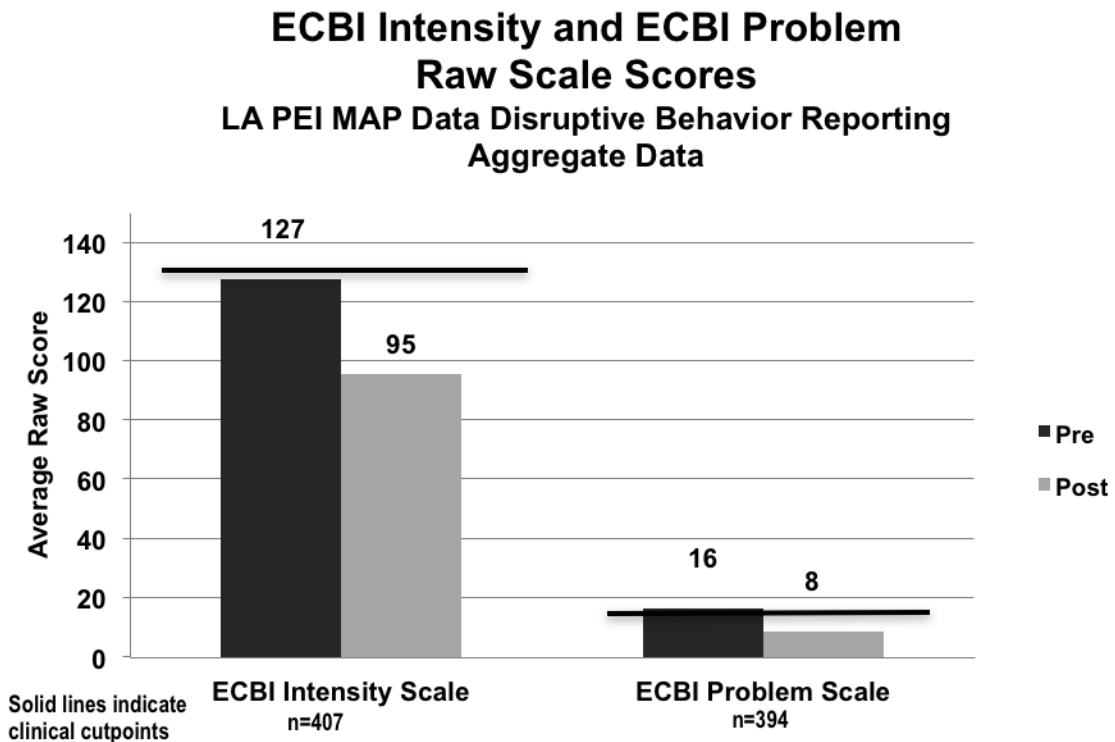
**Graph 8. LA PEI MAP Outcomes: Average PHQ-9 Total Score – Clients who Completed Depression Treatment (n=975)**



**Graph 9. LA PEI MAP Outcomes: Percent of Clients Who Completed Depression Treatment Showing Reliable Change on PHQ-9 Total Score**

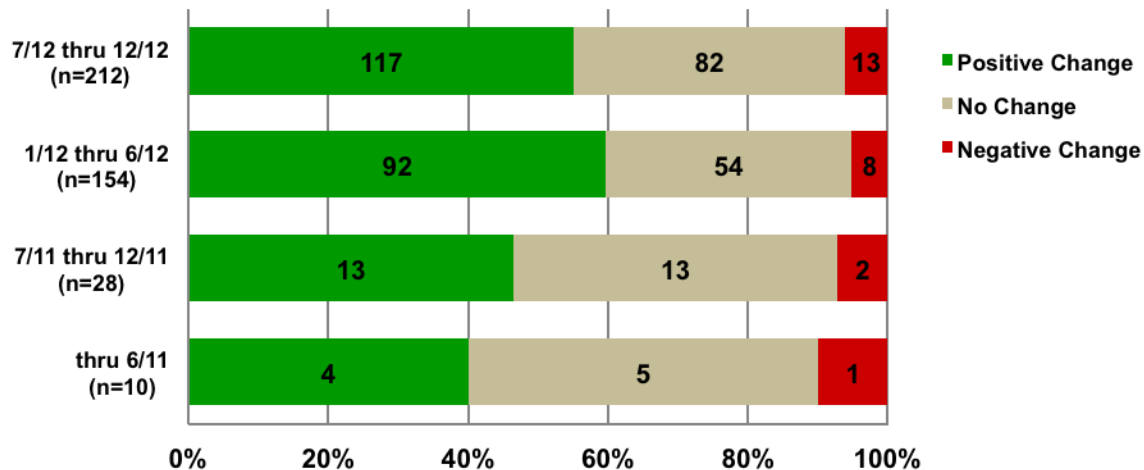


**Graph 10. LA PEI MAP Outcomes: Average ECBI Raw Scale Scores – Clients who Completed Disruptive Behavior Treatment (n=1,226)**



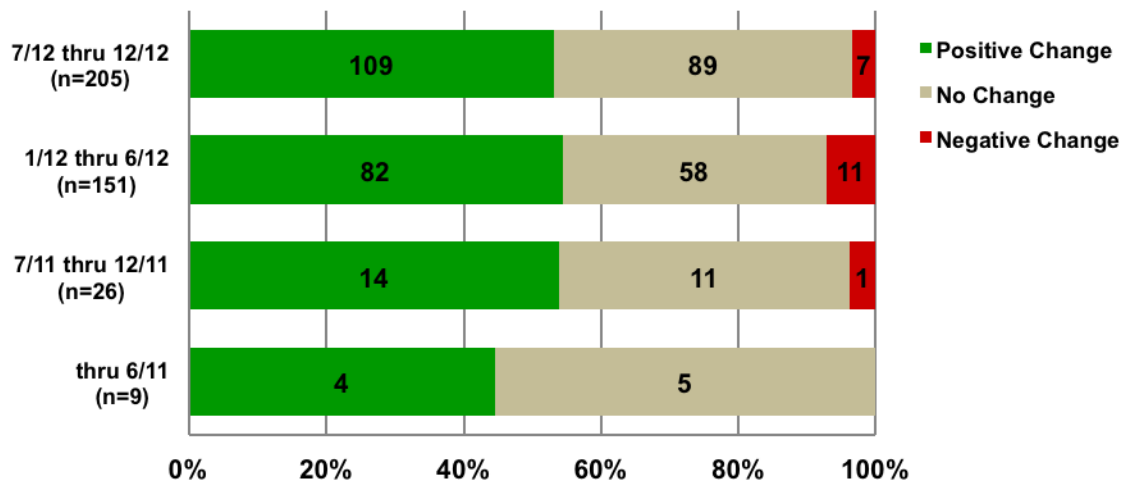
**Graph 11. LA PEI MAP Outcomes: Percent of Clients Who Completed Disruptive Behavior Treatment Showing Reliable Change on ECBI Intensity Raw Scale Score**

**Reliable Change on ECBI Intensity Score  
Pre- to Post- Disruptive Behavior Treatment  
LA PEI MAP Aggregate Data**

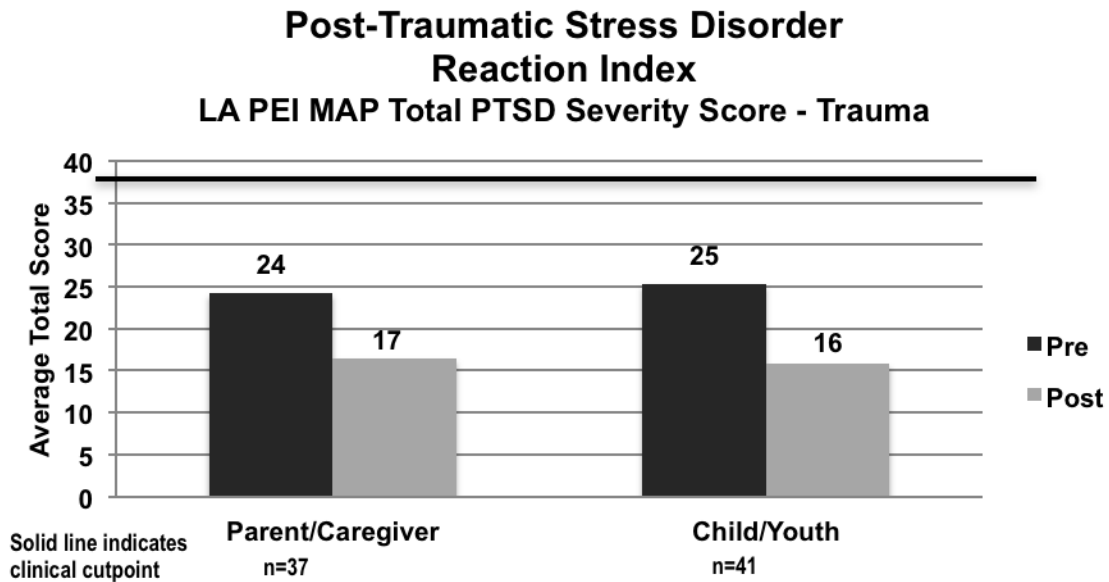


**Graph 12. LA PEI MAP Outcomes: Percent of Clients Who Completed Disruptive Behavior Treatment Showing Reliable Change on ECBI Problem Raw Scale Score**

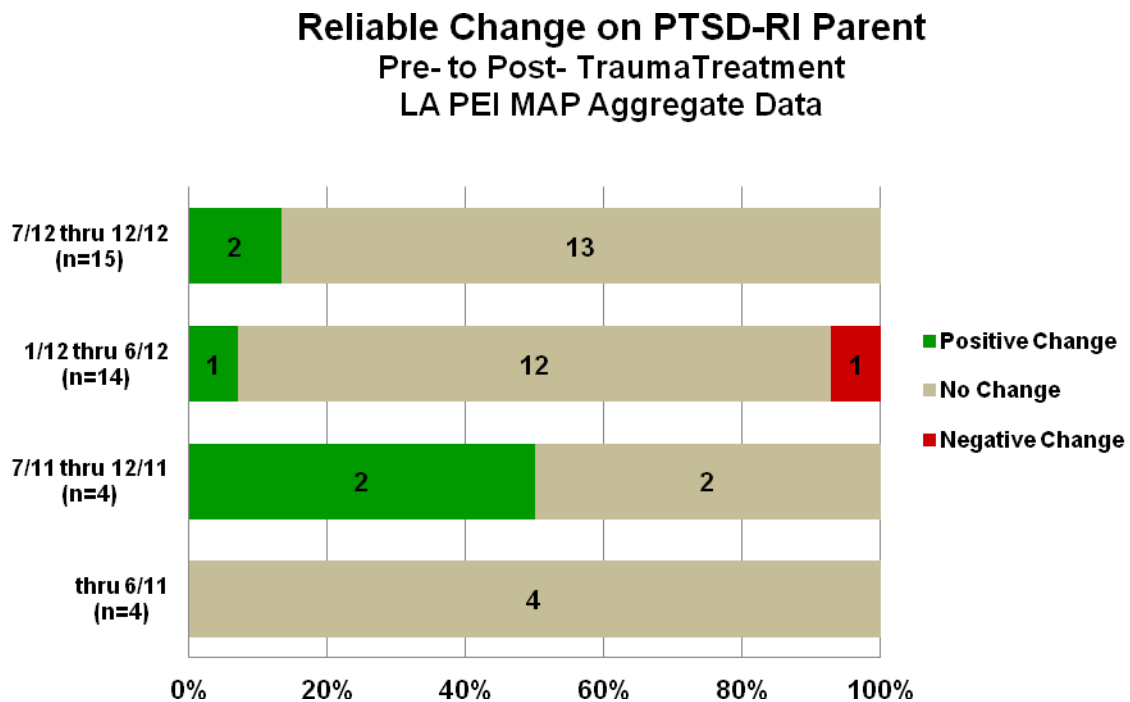
**Reliable Change on ECBI Problem Score  
Pre- to Post- Disruptive Behavior Treatment  
LA PEI MAP Aggregate Data**



Graph 13. LA PEI MAP Outcomes: Average PTSD-RI Parent and PTSD-RI Child Scale Scores – Clients who Completed Trauma Treatment (n=115)

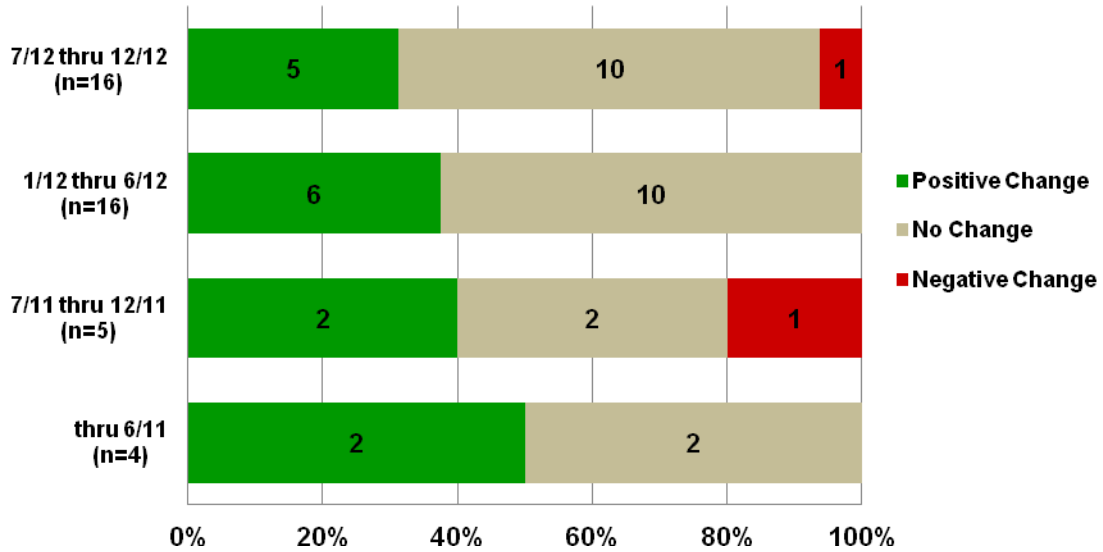


Graph 14. LA PEI MAP Outcomes: Percent of Clients Who Completed Trauma Treatment Showing Reliable Change on PTSD-RI Parent Score



**Graph 15. LA PEI MAP Outcomes: Percent of Clients Who Completed Trauma Treatment Showing Reliable Change on PTSD-RI Child Score**

**Reliable Change on PTSD-RI Child  
Pre- to Post- Trauma Treatment  
LA PEI MAP Aggregate Data**





## **Appendix A. Description of MAP Outcome Measures and Outcome Indicators**

### MAP Overall/General Mental Health Measure: Youth Outcome Questionnaires (YOQ / YOQ-SR)

The *Youth Outcome Questionnaires (YOQ and YOQ-SR)* are general outcome measures of overall child and youth mental health functioning and are for use with all MAP clients. These 64-item standardized questionnaires assess children's global mental health functioning within the prior week according to both youth self-reports (ages 12-18) and reports of their parents/caregivers (for children ages 4-17).

Possible Total YOQ and YOQ-SR scores range from -16-240. Scores of 47 or higher for parent/caregiver report and 46 or higher for youth self-report are most similar to clinical populations.

### MAP Anxiety Measure: Revised Child Anxiety Scale (RCADS / RCADS-P)

The *Revised Child Anxiety Scale (RCADS and RCADS-P)* are target-specific measures for clients participating in treatment focused on anxiety. These 47-item measures assess the frequency/severity of symptomatology associated with specific anxiety diagnoses according to children ages 6-18 and their parents/caregivers.

Possible Total Anxiety scores on the RCADS and RCADS-P range from 0-111.

### MAP Depression Measure: Patient Health Questionnaire-9 (PHQ-9)

The *Patient Health Questionnaire-9 (PHQ-9)* is a target-specific outcome measure for clients participating in treatment focused on depression. This 9-item self-report measure for clients ages 12 and older assesses the overall frequency/severity of depressive symptoms experienced during the prior two weeks.

Possible Total PHQ-9 scores range from 0-27, with scores of 15 or higher indicating moderately severe to severe depression.

### MAP Disruptive Behavior Measure: Eyberg Child Behavior Inventory (ECBI)

The *Eyberg Child Behavior Inventory (ECBI)* is target-specific outcome measure for clients participating in treatment focused on disruptive behaviors. This 36-item measure has two components: one that assesses the frequency, or intensity, of current child behavior problems displayed by children between the ages of 2-16; and one that assesses the extent to which these behaviors are currently perceived as problematic to the child's parent/caregiver.

The *Sutter-Eyberg Student Behavior Inventory (SESBI)* is a companion measure to the ECBI and can be completed by child care workers or teachers. It is a 38-item measure that also assesses the intensity and problematic level of disruptive behaviors currently displayed by children ages 2-16.

Possible ECBI Intensity Raw Scores range from 36-252, with a clinical cutpoint of 131; and possible ECBI Problem Raw Scores range from 0-36, with a clinical cutpoint of 15. Possible SESBI Intensity Raw Scores range from 38-266, with a clinical cutpoint of 151; and possible SESBI Problem Raw Scores range from 0-38, with a clinical cutpoint of 19.

### MAP Trauma Measure: Post-Traumatic Stress Disorder Reaction Index (PTSD-RI)

The *UCLA Post-Traumatic Stress Disorder Reaction Index (PTSD-RI)* is a target-specific outcome measure for clients participating in treatment focused on trauma. The evaluation component of this measure has 20 items that assess the frequency of occurrence of post-traumatic stress disorder symptoms during the prior month according to both child/youth self-reports (ages 6-20) and reports of their parents/caregivers (for children ages 3-18).

Possible Total PTSD Severity Scores range from 0-68; and scores of 38 or higher have the greatest sensitivity and specificity for detecting PTSD.

## **Appendix A. Description of MAP Outcome Measures and Outcome Indicators (cont'd)**

### Outcome Indicator: Percent Improvement in Average Pre- and Post- Scores

The percent improvement in the average scores from pre-MAP treatment to post-MAP treatment is reported for each outcome measure, when available. A paired t test analysis is conducted with each set of scores; and, when the difference observed is not likely to be due to chance ( $p < .01$ ), this is indicated with a footnote.

In addition to reporting the percent of change in average scores in Tables; and, Graphs present the average pre-score and the average post-score, with solid lines indicating the clinical cutpoints when applicable.

### Outcome Indicator: Effect Size Estimate, Cohen's *d*

Cohen's *d* is a standardized effect size measure that estimates the magnitude, or strength, of a relationship. In this dashboard report it estimates the strength of the relationship between the average pre score and the average post score, expressed in terms of standard deviations. An effect size of .5 indicates that the average pre score is .5 standard deviations greater than the average post score. While there is no absolute agreement about what magnitude of an effect size is necessary to establish practical or clinical significance, conventional interpretations of Cohen's *d* are that effect sizes of .2 to .3 represent a "small" effect; effect sizes around .5 reflect a "medium" effect; and, effect sizes of .8 or greater represent a "large" effect. However, an alternate schema has been proposed for the social sciences, where the recommended minimum effect size representing a "practically" significant effect is .41, with 1.15 representing a moderate effect and 2.70 a strong effect [see Ferguson, C.J. (2009). *An Effect Size Primer: A Guide for Clinicians and Researchers. Professional Psychology: Research and Practice*, 40 (5), 532-538].

### Outcome Indicator: Percent of Clients Showing Reliable Change

The percent of clients showing reliable change reflects those with an amount of change on an outcome measure from pre-MAP to post-MAP that meets or exceeds the value of the Reliable Change Index (RCI). RCI, as calculated using the Jacobson-Truax (1991) method, is the amount of change that can be considered reliable based on the difference from pre- to post-, taking the variability of the pre-treatment group and measurement error into consideration. It reflects an amount of change that is not likely to be due to measurement error ( $p < .05$ ) [see Wise, E.A. (2004). *Methods for Analyzing Psychotherapy Outcomes: A Review of Clinical Significance, Reliable Change, and Recommendations for Future Directions. Journal of Personality Assessment*, 82(1), 50-59].

The percent of clients with positive change, no change, and negative change are reported in Tables; and, Graphs present reliable change within each data submission interval.

For the Reliable Change graphs, the Date of Last Session is used to determine the 6-month interval in which a client's data is included; and, the number of clients included in all intervals may not add up to the total number of clients reported in the associated outcomes table. This is because we receive data for clients with dates of service that are later than the minimum date required by the data submission. All data received are included in reporting outcome indicators in the Tables.