

**A Partnership between HACoLA and LACDMH
Promoting Healthy Community and Living for Older
Adults**

**2019 African American
Mental Health Conference
2/28/2019**

Shelly Thompson
Housing Authority County of Los Angeles

Haydeh Fakhrabadi, Psy.D. CPII
Los Angeles County Department of Mental Health

Doratriz Equihua, LCSW
Alma Family Services





Community Development Commission/Housing Authority

Shelly Thompson, Program Administrator
Housing Management Division

AGENCY OVERVIEW

In 1982, the Los Angeles County Board of Supervisors consolidated three entities – the Housing Authority, The Community Development Department, and the Redevelopment Agency – to form the Community Development Commission (CDC). Today, the CDC is comprised of two separate legal entities, the Housing Authority of the County of Los Angeles (HACoLA), and the CDC, both of which are part of the County family, but are independent agencies and not County Departments.

The Community Development Commission (CDC)/Housing Authority *builds better lives and better neighborhoods* for residents and business owners in the unincorporated areas of Los Angeles County and in the various incorporated cities that participate in the many programs we offer.

Public and Affordable Housing Programs

- Public Housing Program is a federally funded program that refers to specific developments owned or operated by the Housing Authority which leases units directly to families.
- Funded by U.S. Department of Housing and Urban Development (HUD) Operating Subsidies, Rental Revenue, Housing Assistance Payment Contracts and various Grants.
- Capital Fund Program funds received by HUD are utilized to renovate public housing sites.
- Residents generally pay 30% of their monthly adjusted gross income towards their rent.
- “Best Practice” Community Policing Program that helps keep residents safe.
- 7-Acre award-winning Growing Experience Urban Farm (Carmelitos Housing Development in Long Beach).

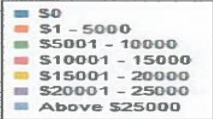
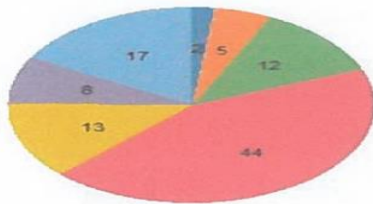
Recognizing the need to promote healthy aging communities, the Community Development Commission/Housing Authority of the County of Los Angeles (CDC/HACoLA) partnered with the Los Angeles County Department of Mental Health (LACDMH) in February 2017 to enable older adult residents to age independently, with as little interruption as possible in daily living. By 2030, it is estimated that Los Angeles County will have three million residents over the age of 60. The CDC/HACoLA, set-out to fully understand and serve older adult needs, and groom its employees to effectively interact and engage with older adults living in public housing. With this in mind, the collaboration is to fully address the mental health needs of older adults.

Resident Characteristics Report

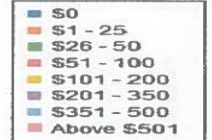
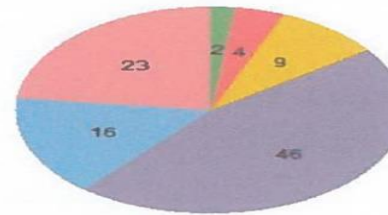
Properties: All Public Housing Sites

Total Population: 6,564
2,962 Housing Units

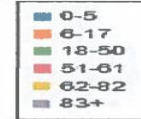
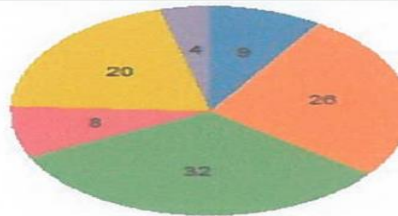
**Average Annual Income
\$16,797**



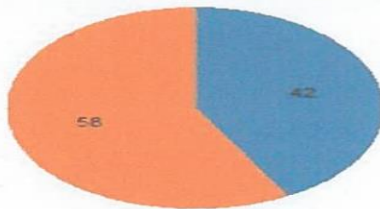
**Average Tenant Payment
\$401**



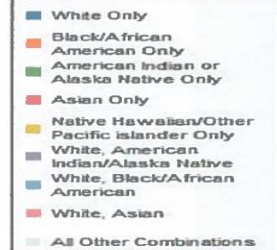
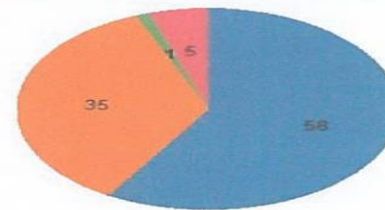
Distribution by Age by Percentage



Distribution by Ethnicity by Percentage



Distribution by Race by Percentage



HACoLA MANAGEMENT MODEL

Management

Maintenance
Modernization
Applicant Background Checks
Lease Enforcement
Banning Policy
Threat of Violence Transfers
Counseling

Partnerships

Community Development Foundation
Public Agencies
Private Agencies
Universities
Non-Profit Organizations
HA Memberships on County Task Forces

Law Enforcement & Security

Crime Tracking & Analysis
Data Compliance System
Community Policing Program
Narcotics & Gang Investigations
Anti-Drug/Gang Task Forces
CPTED
CCTV Systems



Resident Services

Recreation Centers
Family Learning Centers
Family Self Sufficiency
Senior/Disabled Services
Family Resource Centers
JJCPA (Youth Intervention)
Resident Councils



230

SOUTH
BAY
GARDENS

8

Los Angeles County Department of Mental Health Mission Statement

- “Our mission is to optimize the hope, wellbeing and life trajectory of Los Angeles County's most vulnerable through access to care and resources that promote not only independence and personal recovery but also connectedness and community reintegration.”

HACoLA and LACDMH Partnership

To promote healthy aging in place and healthy aging communities, the Los Angeles County Department of Mental Health (LACDMH) Older Adult System of Care Bureau and the Housing Authority of the County of Los Angeles (HACoLA) began to develop a partnership in 2016.

HACoLA and LACDMH Partnership

The Operational Agreement between the Housing Authority of the County of Los Angeles (HACoLA) and Los Angeles County Department of Mental Health Older Adult System of Care Bureau (LACDMH) was fully executed in February 2017.

Implementation Steps

- Staff Training
- Telephone Consultation
- Co-Location
- Community Presentation

Staff Training

The mental health trainings are designed to strengthen HACoLA's employees' ability to interact and engage with older adults who may be experiencing symptoms of mental illness. LACDMH presented a list of educational presentations that were immediately rolled-out to HACoLA. Specialized trainings were rolled-out in February and March 2018. More ongoing trainings will be scheduled as needed.

Trainings

Staff Trainings

- “A Basic Overview of Mental Health and Older Adults”
- Question, Persuade, and Refer (QPR)
- “How to Manage Difficult Interpersonal Situations”
- Hoarding Disorder

Co-location Sites Implemented in 2017

- Lancaster Homes (CFAR-Heritage Clinic) **SA1**
- Orchard Arms (Hillview Mental Health Center) **SA2**
- Whittier Manor (Telecare) **SA7**
- Nueva Maravilla (Alma Family Services) **SA7**
- West Knoll (CFAR-Heritage Clinic) **SA4**

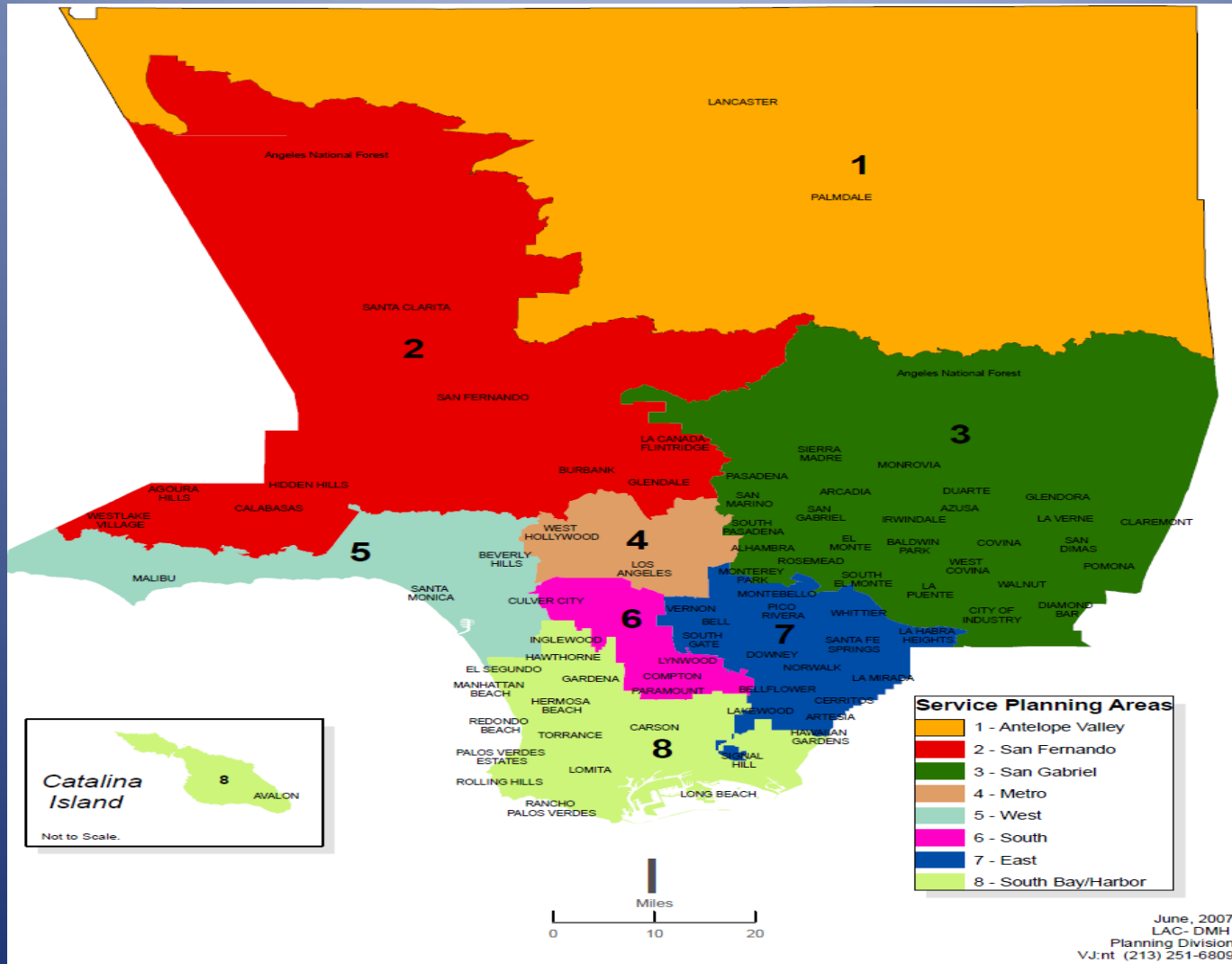
Co-location Sites Implemented in 2018

- Franciscuito Villa (SSG SILVER) **SA3**
- Foothill Villa (Hillview MHC) **SA2**
- South Bay Gardens (SSG SILVER) **SA6**
- Herbert Ave (Alma Family Services) **SA7**
- Marina Manor (JFSLA) **SA5**
- Palm Apartments (CFAR-Heritage Clinic) **SA4**
- Kings Road (CFAR-Heritage Clinic) **SA4**

Co-location Sites Implemented in 2019

- Carmelitos Housing (G.E.N.E.S.I.S.) **SA8**

Service Areas of Los Angeles County



Consultation Calls

- Monthly conference calls have been set-up between LACDMH and HACoLA designated staff to discuss case scenarios on pressing older adult issues or behaviors that may lead to eviction. During the calls, HACoLA Property Managers, Case Managers, and other staff interact with LACDMH staff and providers to address issues/concerns, and seek recommendations and technical assistance as appropriate to maintain and promote healthy aging and living for the older adult.

Co-location Community Presentations

Topics

- Holiday Blues
- Preserving your Memory
- Managing your Medications
- Isolation
- Grief and Loss
- Healthy Aging Bingo
- Resiliency
- Hoarding
- Health, Wellness, and Wholeness
- Depression and Anxiety
- Good Sleep and Emotional Well-being

Outcomes

- Between February 2017 and February 2018:
- Over 300 public housing older adults have been positively impacted by our service providers:
 - Clinical services
 - Outreach and engagement
 - Group activities
 - Over 26 mental wellness presentations
- 14 consultation calls have been facilitated
 - Over 20 case scenarios
- 290 HAcOLA employees benefited from training provided by LACDMH