



**LAC**  
**DMH**  
LOS ANGELES COUNTY  
DEPARTMENT OF  
**MENTAL HEALTH**

## **Legal Entity Extract Files**

Access Files and Tables Descriptions

Authored: February 18, 2010

Updated: July 28, 2017

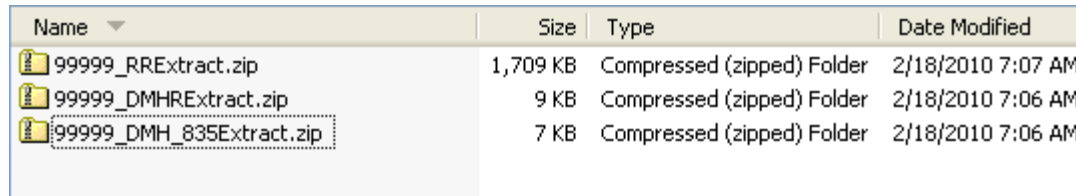
# Overview

This document contains instructions on how to unzip the Legal Entity Extract files from the EFT. Also contained in this document are the descriptions of the Extract files, Access database tables that are present in the Legal Entity Extract.

## 1. Unzipping Legal Entity Extract Files

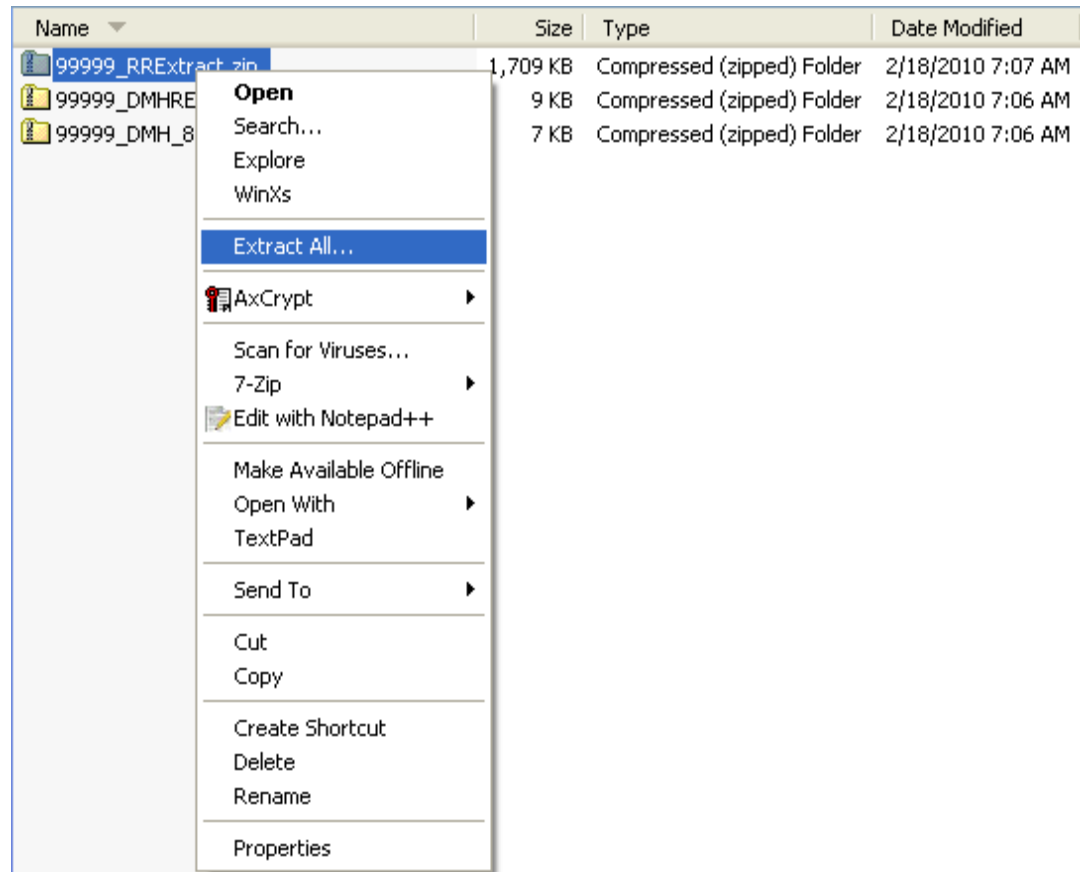
The zip files on the EFT are password protected. In order to unzip the output data, you will need to enter a password when prompted. Detailed instructions for Download and Extract are in this section.

- Download LEEExtract.zip files to your local directory

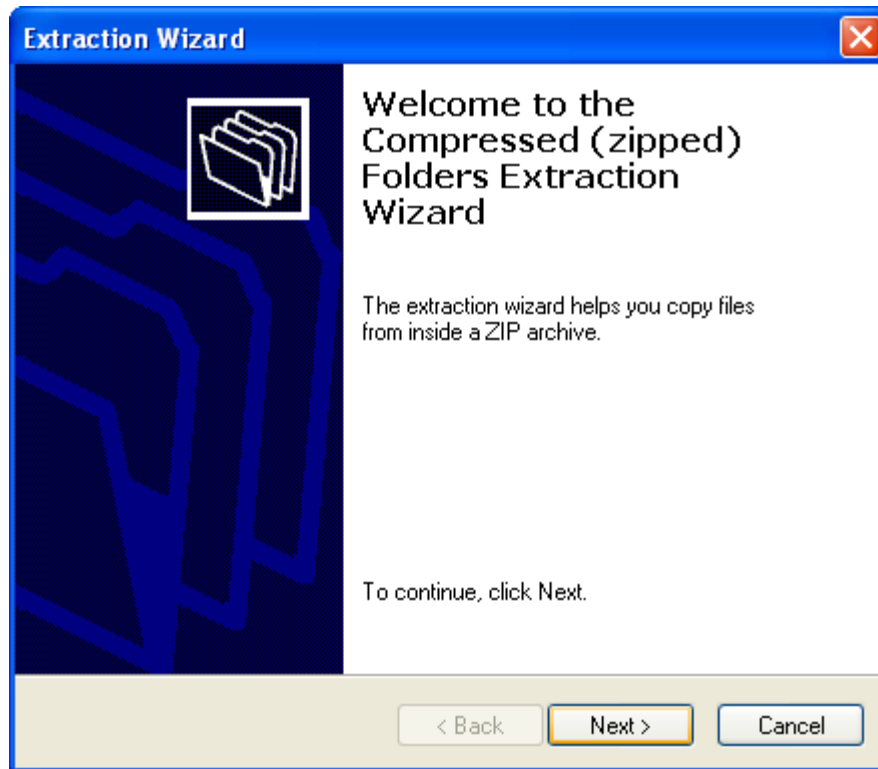


Name	Size	Type	Date Modified
99999_RRExtract.zip	1,709 KB	Compressed (zipped) Folder	2/18/2010 7:07 AM
99999_DMHRExtract.zip	9 KB	Compressed (zipped) Folder	2/18/2010 7:06 AM
99999_DMH_835Extract.zip	7 KB	Compressed (zipped) Folder	2/18/2010 7:06 AM

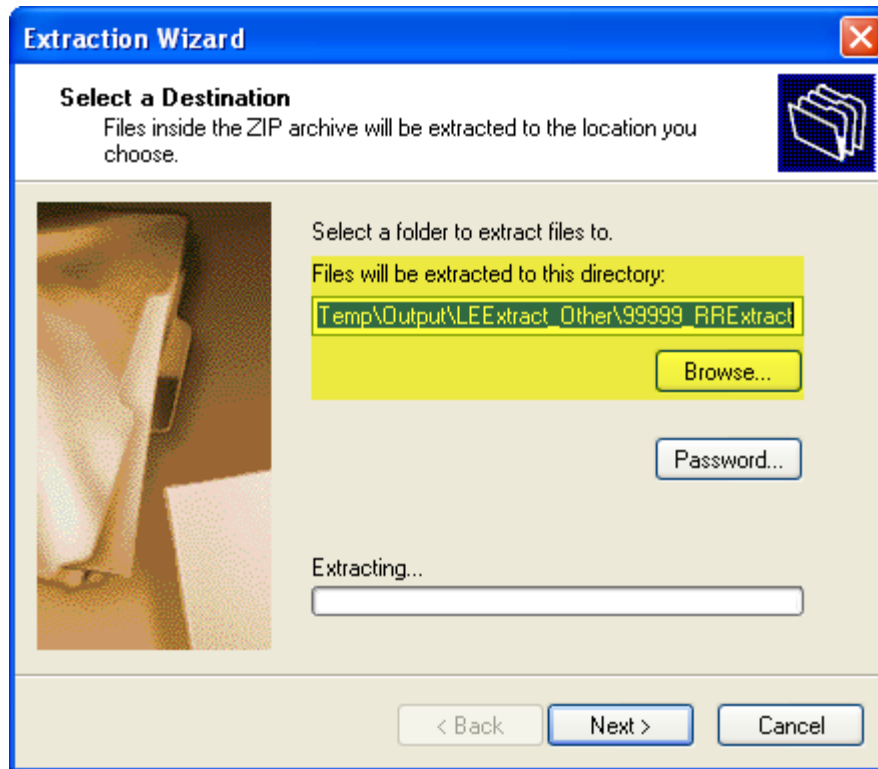
- Right-Click on a zip file that you would like to uncompress and Select “Extract All...”



- Click “Next >” button on Extraction Wizard popup window

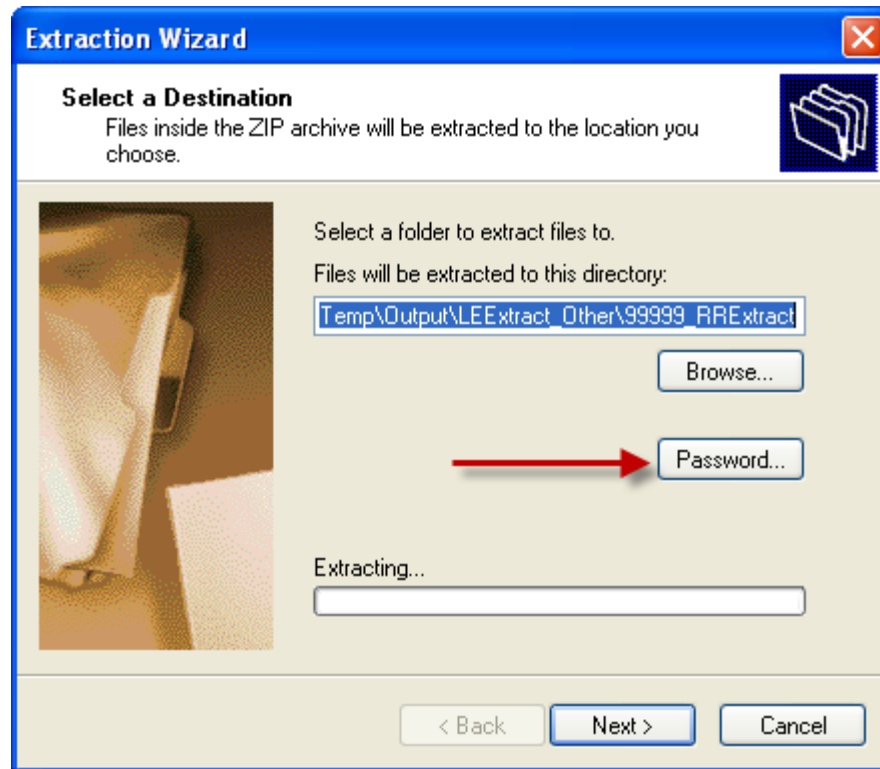


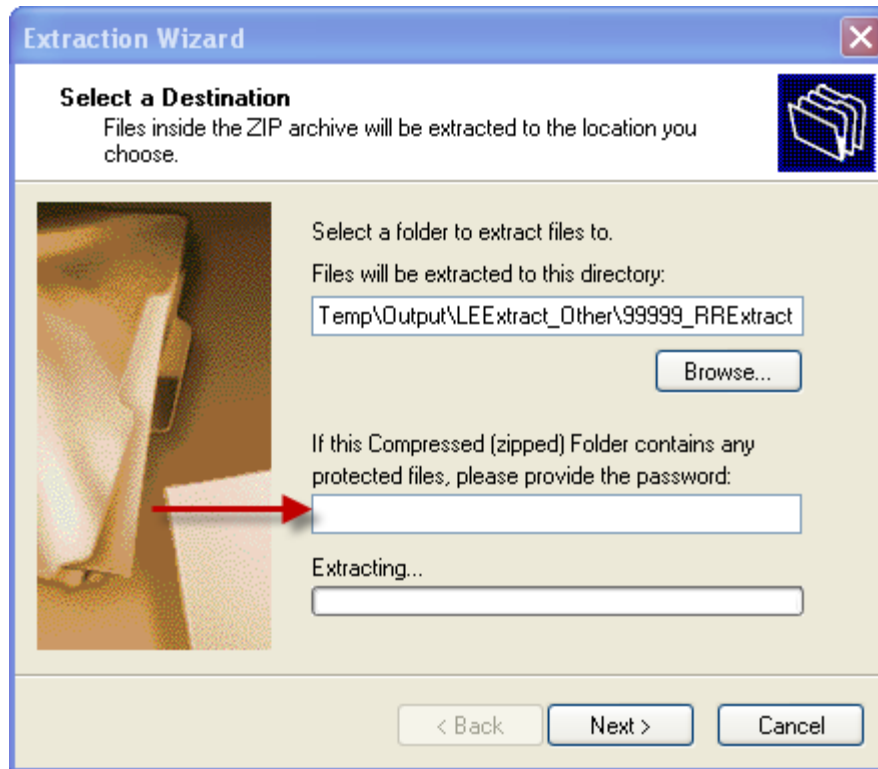
- Choose your extract destination by click-on the "Browse..." button



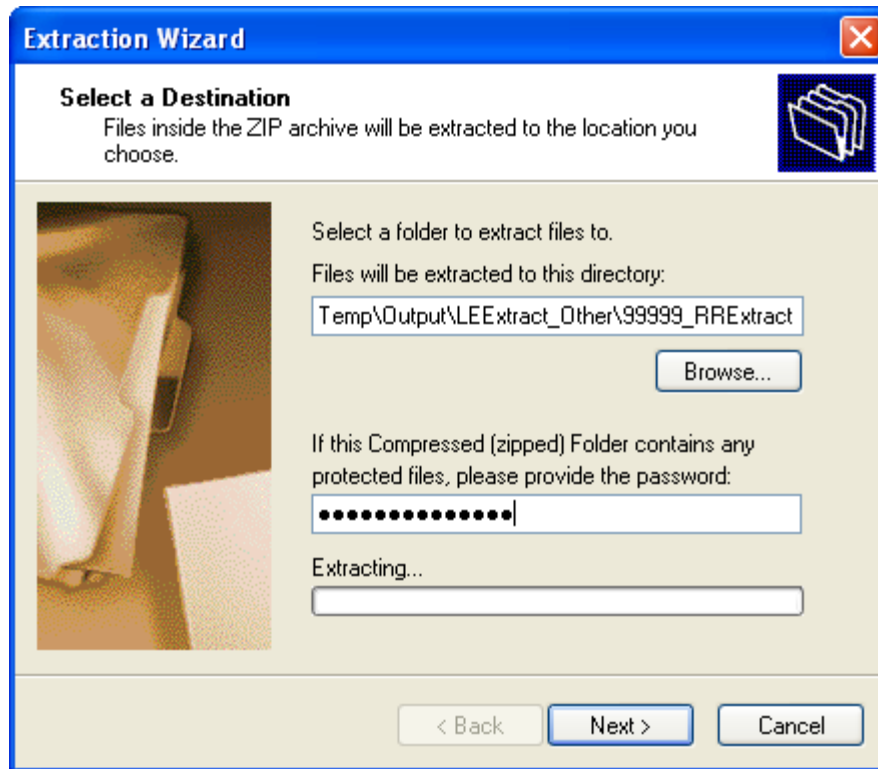
- Click-on the “Password...” button and enter your password for the zip file into the password textbox.

**NOTES:** The password should be in the following format LE#####.DMHKEY where ##### is the Legal Entity Number.



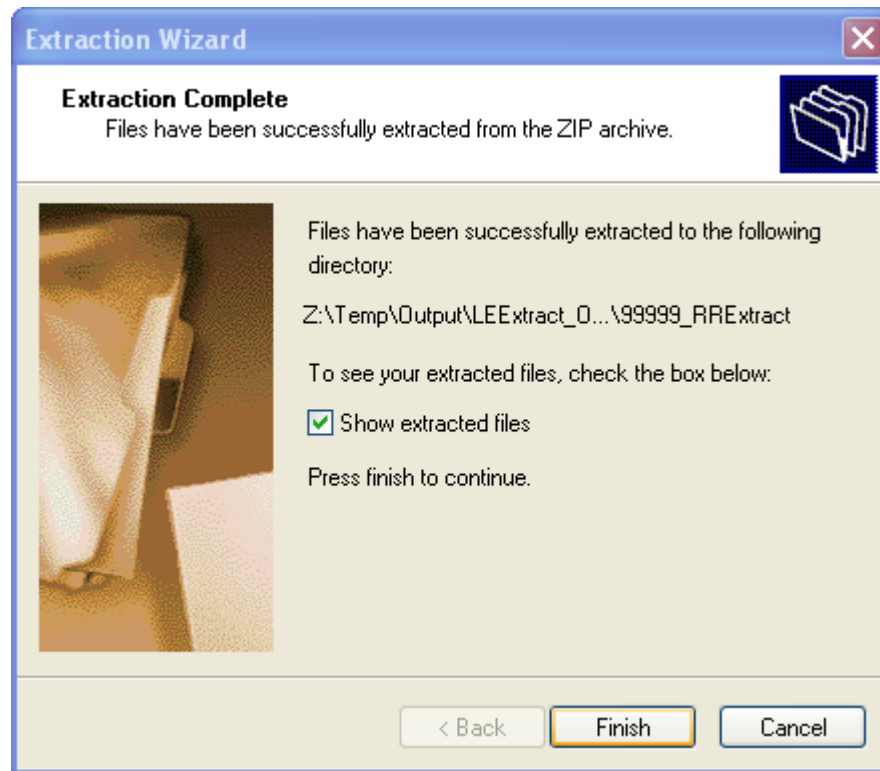


- After you enter the password, click-on the “Next >” button.



- Click-on the “Finish” button to finish the extraction.





## 2. Legal Entity Extract Files

There are three Output Data zip files per Legal Entity. The prefix of each zip file is the Legal Entity Number, denoted here by “#####”.

Descriptions of the zip files and file contents are defined below.

OUTPUT DATA	FILE CONTENTS	DESCRIPTION
#####_RRExtract.zip:		Contains three Reporting Repository Access databases
	#####_RRExtract01.mdb	Contains 13 report tables from Reporting Repository
	#####_RRExtract02.mdb	Contains 13 report tables from Reporting Repository
	#####_RRExtract03.mdb	Contains 3 report tables from Reporting Repository
#####_DMHRExtract.zip		Contains two DMH Reporting Access database
	#####_DMHRExtract01.mdb	Contains 7 report tables from DMH Reporting
	#####_DMHRExtract02.mdb	Contains 5 report tables from DMH Reporting
#####_DMH_835Extract.zip		Contains one 835 EDI Access database
	#####_DMH_835Extract01.mdb	Contains 6 report tables from 835 EDI

## 3. Database Tables

### 3.1 Access Tables in #####\_RRExtract.zip:

Table Name	Description
<b>#####_RRExtract01.mdb</b>	
rpt_BillingProvider	Contains records for Billing Providers Locations in the IS
rpt_CodeMaster	Contains various code values
rpt_Clients	Contains clients that have a DMH ID
rpt_ClientBenefit	Contains client benefits that have not been deleted. Does not include client Medi-Cal benefits (based on Medi-Cal eligibility) that were added in IS2.
rpt_CommunityService	Contains information for each non-deleted community service
rpt_CommunityServiceStaff	Contains information for each non-deleted additional staff recorded for a community service. This does not contain the main rendering provider recorded for the community service. There may be multiple staff per community service.
rpt_DMHClaim	Stores a record for each instance of a service that has been submitted for claiming. Does not contain services that have been deleted, provider is retired, or, due to errors, basic data cannot be populated. NOTE: A service may have multiple instances due to resubmission and/or voids

rpt_DMHCclaimPlan	Contains information for plans attributed to an inbound claim. Only those plans for submitted claims not in 'Submitted' status are populated
rpt_DeletedService	Contains information for instances of a service that have been deleted.
rpt_Episode	Contains record of each episode that is not deleted and contains an MHMIS Sequence Number. Also does not contain episodes for retired providers or where the episode's service location is inactive for the episode Admit date Table contains inpatient, outpatient and day-treatment episodes.
rpt_GroupSessionStaff	Contains information for each staff recorded on a group session. This is a direct copy from the IS Repository.
rpt_LegalEntity	Contains records for providers set as Legal Entities in the IS
rpt_MediCalEligibility	Contains Client Medi-Cal eligibility request and response information
<b>##### RRExtract02.mdb</b>	
rpt_ProcedureCode	Contains list of procedure codes. This is a direct copy from the IS Repository
rpt_ProviderAltID	Contains records for various Identifiers that a provider may have. All the records for the IS Repository are included
rpt_PayerClaim	Contains external payer information for an inbound claim where an outbound claim has been sent to the external payer by the IS.
rpt_PayerAdjustment	Contains segment and element
rpt_ProviderContractedPlan	Contains plans assigned to billing providers. Plans are by fiscal year
rpt_ProviderLicense	Contains taxonomy and license values for a provider. As a provider may have multiple taxonomies there is one record per taxonomy.
rpt_RuleFailClaims	Contains inbound claims that failed IS Rules but are not in rpt_DMHCclaim. These claims could not be populated in rpt_DMHCclaim because basic data is invalid.
rpt_RenderingProvider	Contains records for providers set as Rendering Providers in the IS. Only the non-deleted, non-retired providers that have an association to at least one service location are included. As a rendering provider may have associations to multiple service locations, there is one record per association
rpt_ServiceEBP	Contains EBP and clinical service ID
rpt_Service	Contains a record for each instance of a service that has been submitted or not submitted for claiming. Does not contain services that are voided, deleted or where the provider is retired.
rpt_ServiceLocation	Contains records for providers set as Service Locations in the IS. Only the non-deleted records that have an association record to a billing provider are included.
rpt_ServiceStaff	Contains information for each non-deleted additional staff recorded on an instance of a service. This does not contain the main rendering provider that the instance of the service is recorded against. Note that for each instance of a service, the additional staff may change.
is_CrosswalkProcedureCode	Contains various crosswalk values (e.g. MHMIS Activity Code, Medi-Cal outbound claim procedure code) for a procedure code. A procedure code may have multiple crosswalk values
<b>##### RRExtract03.mdb</b>	
rpt_Diagnosis	Contains rendering provider, patient status, primary and secondary diagnosis
rpt_ServiceRate	Contains rate table, fiscal year and termination date
rpt_ServiceRateDetails	Contains service rate ID and procedure ID

### 3.2 Access Tables in #####\_DMHRExtract.zip:

Table Name	Description
<b>#####_DMHRExtract01.mdb</b>	
rpt_630BClaimUnits	Contains Monthly Reports of Units of Service, Admissions and Discharges by Report Unit, Mode/SFC
rpt_701ClaimUnits	Contains Claim Units Report by Report Unit, Mode/SFC
rpt_701UPClaimUnits	Contains Claim Units Report by Report Unit, Plan, Mode/SFC
rpt_FinClaimList	
rpt_PostHospOPAccessSummary	
rpt_DCFC_Alerts_to_DMH	
rpt_PostHospOPAccessDetail	Contains detail records for those clients who have been seen after hospitalization discharge by an Outpatient Provider
<b>#####_DMHRExtract02.mdb</b>	
rpt_DuplicateDenialError_20111027	
rpt_IS410_HospitalizationReport	
rpt_STP_Cohort	
rpt_STP_Demographics	
rpt_STP_Hospitalizations	

### 3.3 Access Tables in #####\_DMH\_835Extract.zip:

Table Name	Description
<b>#####_DMH_835Extract01.mdb</b>	
Rpt_835Main	835 Main Parsing Table
Rpt_835MainAV	835 Main Parsing Table
Rpt_835ClaimDetail	835 Claim Related EDI Segments Table
Rpt_835ClaimDetailAV	835 Claim Related EDI Segments Table
rpt_835ServiceDetail	835 Service Related EDI Segments Table
rpt_835ServiceDetailAV	835 Service Related EDI Segments Table

