

# **HEALTH NEIGHBORHOODS**

## **Status Report Fiscal Year 2015 – 2016**

Prepared by the  
County of Los Angeles  
Department of Mental Health





## **DMH Mission**

*Enriching lives through partnership designed to strengthen the community's capacity to support recovery and resiliency is our Mission. DMH works with its stakeholders and community partners to provide clinically competent, culturally sensitive and linguistically appropriate mental health services to our clients in the least restrictive manner possible. We tailor our services and support to help clients and families achieve their personal goals, increase their ability to achieve independence and develop skills to support their leading the most constructive and satisfying life possible.*



## Table of Contents

<b>Executive Summary</b> .....	<b>i</b>
<b>Countywide Health Neighborhood Activities</b> .....	<b>1</b>
County Departments	
Memorandum of Understanding	
Health Neighborhood Survey	
Presentations	
Trainings	
Faith-based Activities	
<b>Service Area 1</b> .....	<b>4</b>
Antelope Valley Participants	
Antelope Valley Activities	
Antelope Valley Revised Map	
<b>Service Area 2</b> .....	<b>7</b>
Northeast San Fernando Valley Participants	
Northeast San Fernando Valley Activities	
Northeast San Fernando Valley Revised Map	
<b>Service Area 3</b> .....	<b>10</b>
El Monte Participants	
El Monte Activities	
<b>Service Area 4</b> .....	<b>12</b>
Boyle Heights Participants	
Boyle Heights Activities	
Hollywood Participants	
Hollywood Map	
<b>Service Area 5</b> .....	<b>16</b>
Mar Vista-Palms Participants	
Mar Vista-Palms Activities	
Mar Vista-Palms Map	
<b>Service Area 6</b> .....	<b>18</b>
MLK/Watts-Willowbrook Participants	
MLK/Watts-Willowbrook Activities	
<b>Service Area 7</b> .....	<b>20</b>
Southeast Los Angeles Participants	
Southeast Los Angeles Activities	
<b>Service Area 8</b> .....	<b>22</b>
Central Long Beach Participants	
Central Long Beach Activities	



## **EXECUTIVE SUMMARY**

The Department of Mental Health (DMH) has continued to build upon and enhance Health Neighborhoods over the course of this past Fiscal Year. As you may recall, the term “Health Neighborhood” was based upon two interdependent concepts: community change and service delivery. DMH has continued to lead county efforts with regard to the development of the Service Delivery component within the Health Neighborhoods, while the Department of Public Health (DPH) is taking the lead on Community Change efforts.

The initial composition of Health Neighborhoods had been focused on direct service providers with particular emphasis on improving access to care, improving the quality and coordination of care, and containing costs through effective communication among providers. Additional service and support providers have joined the Health Neighborhoods bringing with them a broader array of resources that will complement existing services and contribute to the overall health and wellness of the community. These newer service and support providers are also gaining knowledge about and access to services provided by health, mental health, public health and substance use disorder treatment services.

Two additional Health Neighborhoods have been added during this Fiscal Year bringing the total to nine (9) across the County. Neighborhoods continue to celebrate successes and modify processes related to referrals and care coordination, as needed. Health Neighborhood participants completed surveys designed to identify strengths, potential weaknesses and goals for future development. Relationship building across providers and the increased awareness of existing resources in the community have made the monthly Health Neighborhood meetings a valuable and enriching experience for the participants and will ultimately benefit the community that they serve.

Several Health Neighborhood activities have taken place over this past Fiscal Year. Those with countywide applicability will be discussed first. Thereafter, a description of each Health Neighborhood including those who have signed the Health Neighborhood MOU; those who are in attendance, but have not signed the MOU; and additional activities specific to each Health Neighborhood will be presented.

For additional information, please feel free to contact Robin Kay, Ph.D., Acting Director at 213-738-4108.



## **COUNTYWIDE HEALTH NEIGHBORHOOD ACTIVITIES**

### County Departments

A meeting took place in November 2015 to introduce all County departments to the concept of Health Neighborhoods and to identify various activities conducted by each department that might support the continued development of Health Neighborhoods. This meeting was co-chaired by Marvin Southard, DSW, former DMH Director and Cynthia Harding, MPH, Interim Director of DPH.

### Memorandum of Understanding

The Memorandum of Understanding was amended in order to incorporate different types of provider organizations, healthcare-related providers as well as those providing other services and supports essential to the wellbeing of the community.

### Health Neighborhood Survey

A simple survey was constructed and administered in May 2016 to assess participants' perception of the Health Neighborhood meeting, including: what is working well; what has been a challenge, and what goals or suggestions participants have for the coming year. There was an overwhelmingly positive response to increased collaboration and direct communication across providers and learning about additional resources that are available in each Health Neighborhood.

### Presentations

Various presentations were provided to educate and/or update interested parties on the status of Health Neighborhoods, including but not limited to the following:

- UCLA, Center for Health Care Excellence
- USC, School of Social Work
- National Alliance for Mental Illness
- DPH, Substance Use Disorder Treatment Services Contractors
- DPH/SAPC CASC Directors
- Maternal Mental Health NOW
- Center for Health Justice
- Faith-based Advocacy Council



## TRAININGS

***The Culture of Integrated Services (Health 101)*** is a 60-minute, online course which reviews the benefits of service integration for consumers with comorbidities and highlights the challenges to integrated care. The training covers the roles of mental health staff in integrated settings and highlights ways that various members of the treatment team can support the overall health of consumers. Additionally, the course reviews key medical issues that frequently co-occur with mental health and substance use disorders, and discusses how behavioral health providers can better identify comorbid health and mental health conditions.

***The Importance of Integrated Services for Children and Adolescents (Health 102)*** is a 60-minute, online course that provides introductory information for clinicians about integrating mental health treatment with both physical health and substance use concerns in adolescents and children. Participants learn about successful integrated care models, medical issues that commonly co-occur with mental health and substance use in children and adolescents, and how they can use behavioral health interventions to address these medical issues. The training also includes a case study for participants to practice applying the knowledge from the training to a realistic potential client.

***COD 101: A Clinical Look at Co-occurring Mental Health, Substance Use, and Physical Health Disorders*** is a one hour and 40 minute, online course that provides an introduction to the evolving field of co-occurring mental health, substance use, and physical health disorders that are prevalent in DMH consumers. The training reviews the effects of commonly used substances and introduces participants to the epidemiology, prevalence, and neuroscience of co-occurring disorders. Participants learn about the conceptualization of co-occurring disorders and how their interaction impacts screening, assessment, and treatment. Participants are introduced to two chronic medical conditions that are common in DMH consumers. The training also includes treatment considerations and strategies to accommodate the cognitive impairments often present in consumers with co-occurring mental health, substance use, and physical health disorders.

***Advanced Motivational Interviewing Academy*** is a day-and-a-half, in-person course requiring previous training and experience using motivational interviewing. It provides in-depth instruction, practice, and feedback on fostering and utilizing change talk to increase client motivation and movement toward change across all health, mental health and substance use conditions. Significant time is devoted to “real play” practice. This helps participants gain skills necessary to elicit change talk from clients with low levels of readiness for change, thereby increasing levels of motivation and moving them toward action to address their health-related issues.



## FAITH-BASED ACTIVITIES

DMH has primarily used countywide and local mental health education and training forums as well as interfaith councils to engage faith communities in Los Angeles County. DMH has continued its efforts to leverage the faith community engagement for the enhancement of its Health Neighborhood Initiative (HNI). Building on the initial step taken in FY 2014-15 to educate faith communities about the HNI, DMH worked in FY 2015-16 on creating a position in each Service Area to help support faith outreach efforts as well as Health Neighborhood efforts and link the two together. These positions were approved by the Board in March 2016 and hiring efforts began during the last quarter of FY 15-16. In addition, partly as a result of building awareness earlier and partly because of ongoing information sharing by Service Area managers, a few Service Area faith-based partners began participating in the local HNI. These include:

- Service Area 1 -- One of the local faith based organizations that provides food and clothing to the homeless has been actively involved with the Antelope Valley Health Neighborhood efforts and also attends the SAAC 1 meetings.
- Service Area 2 – A faith-based organization that serves the homeless joined the Northeast San Fernando Valley Health Neighborhood.
- Service Area 3- DMH provided a Health Neighborhood presentation at one of the regular San Gabriel Valley Clergy Breakfasts, some of whom have since started to attend the monthly El Monte Health Neighborhood meetings.
- Service Area 4 – As a result of multiple clergy meetings in SA 4, a faith-based partner joined the Hollywood Health Neighborhood.
- Service Area 8 – A staff representative from a faith-based organization who participated on the DMH Interfaith Clergy Roundtable in SA 8 also participated in the Central Long Beach Health Neighborhood meetings.

---

Additional information regarding specific Health Neighborhoods and their associated activities may be found in the following pages.



**SERVICE AREA 1**  
**HEALTH NEIGHBORHOOD: ANTELOPE VALLEY**

The following 14 service providers have signed the Antelope Valley Health Neighborhood MOU:

<b>Mental Health Providers</b>	<ul style="list-style-type: none"> <li>• DMH-Antelope Valley Mental Health Center</li> <li>• DMH-Antelope Valley Wellness Center</li> <li>• Child and Family Guidance Center</li> <li>• Children's Bureau</li> <li>• The Children's Center of the Antelope Valley</li> <li>• DMH/DHS Collaboration Program-High Desert Regional Health Center</li> <li>• Hathaway-Sycamores Child and Family Services</li> <li>• Heritage Clinic</li> <li>• Masada Homes</li> <li>• Mental Health America of Los Angeles</li> <li>• DMH-Palmdale Mental Health Center</li> <li>• Penny Lane Centers</li> <li>• Pathways Community Services</li> <li>• Tarzana Treatment Centers, Inc.</li> </ul>
<b>Health Providers</b>	<ul style="list-style-type: none"> <li>• Antelope Valley Community Clinic</li> <li>• DHS-High Desert Regional Health System</li> <li>• Tarzana Treatment Centers, Inc.</li> </ul>
<b>Substance Use Disorder Treatment Provider</b>	<ul style="list-style-type: none"> <li>• Tarzana Treatment Centers, Inc.</li> </ul>
<b>Public Health Provider</b>	<ul style="list-style-type: none"> <li>• Antelope Valley Partners for Health</li> </ul>

The following participants have been attending the Antelope Valley Health Neighborhood:

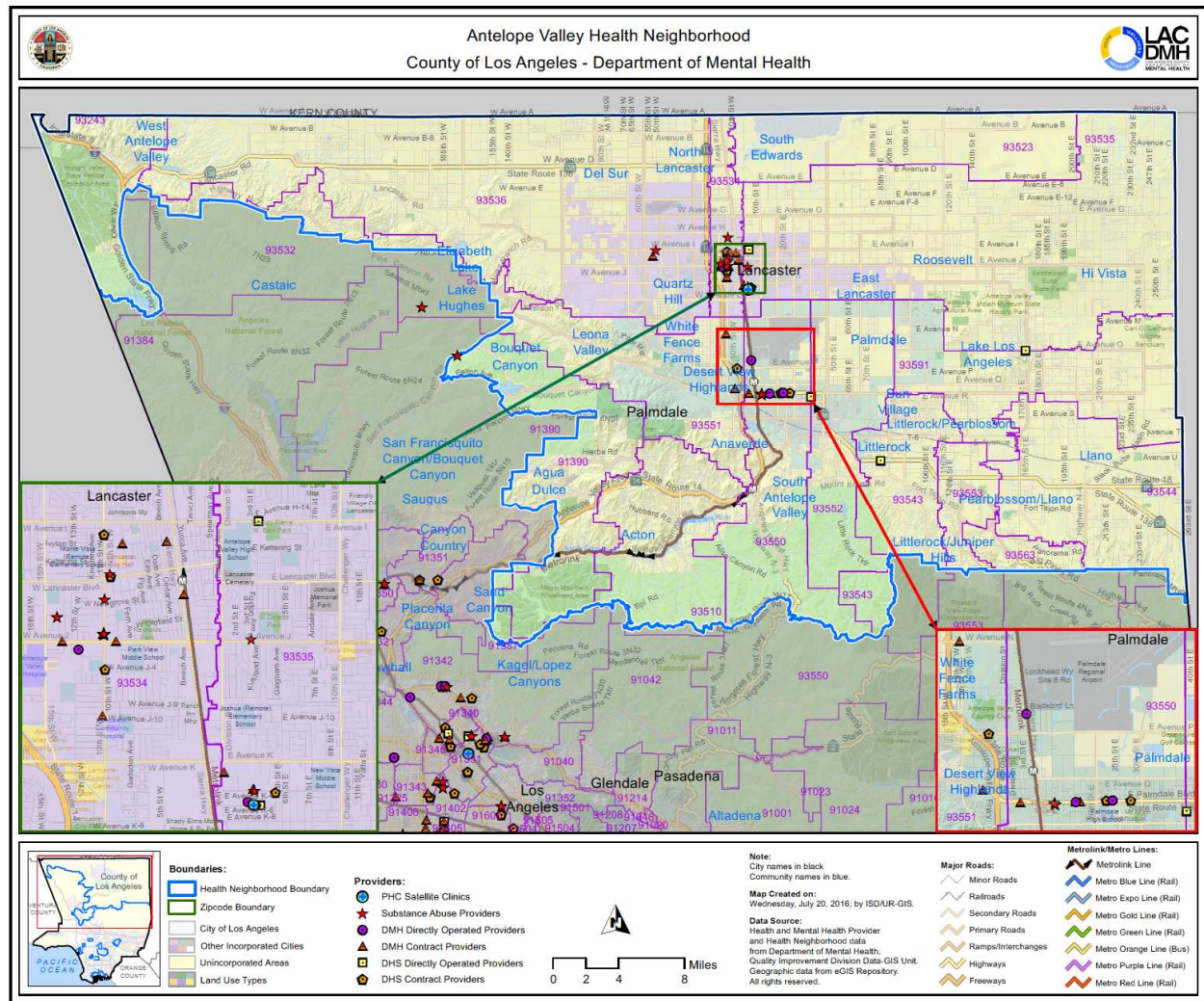
- Antelope Valley Hospital
- Antelope Valley Transit Authority
- Bartz-Altadonna Community Health Center
- Best Start-Lancaster
- Child Care Resource Center
- County of Los Angeles Superior Court
- County of Los Angeles Department of Children and Family Services
- County of Los Angeles Department of Health Services – Housing for Health
- County of Los Angeles Department of Probation
- County of Los Angeles Department of Public Health
- County of Los Angeles District Attorney's Office
- Equal Chances Counseling
- Health Advocates
- L.A. Care Health Plan
- Lancaster School District
- Living Sacrifice Ministry
- Love on Purpose
- National Alliance for the Mentally Ill
- Neighborhood Legal Services of Los Angeles County
- North Los Angeles County Regional Center
- Olive Support Services
- Palmdale School District – Foster Education
- Pueblo Y Salud
- True Vine Gospel Church
- United Community Support Center
- Vista del Mar Hospital



### Antelope Valley Health Neighborhood (AV HN) Activities

- The AV HN participants decided to expand the neighborhood to focus on the entire Antelope Valley rather than restricting it to just Lancaster. This decision was made because almost all of the providers and agencies serve the entire AV including the unincorporated areas. It was agreed that it made more sense to broaden the range of services and supports as well as the “trackable” residents to truly address the capacity issues in the area.
- A major priority of the group was to find a 52-week batterers program that met court requirements. There was not one previously identified in the AV that the providers were aware of. The HN brought in a faith-based counseling center that was in the process of becoming certified. They now hold the classes at Children’s Center of the AV two days per week and have been able to get the cost to be very affordable for the community.
- Judge Denise McLaughlin-Bennet from Los Angeles County Superior Court presented at one of the AV HN meetings discussing the Community Collaborative Court. She shared information on the program and asked for participants to join. Through this meeting, several providers have built stronger relationships with the court system. They have been able to help educate the judges about how specific programs work so that they can write orders that the providers can carry out. They have also been given detailed information on programs in the area and are making more routine referrals to help those involved in the justice system get access to the services they need.
- For the first time, L.A. Care has started a direct network in the AV in 2016. The May AV HN meeting was dedicated to this topic and AV HN participants and frontline staff were invited to have a discussion with L.A. Care to share areas where they would like to see improvement. Medical directors, clinicians, and other staff attended and shared the specific areas where they struggle to find appropriate referrals for the people they serve. L.A. Care is now sending a representative from their AV network to the monthly meetings. Beacon representatives have also been attending.
- AV Transit Authority provided a train-the-trainer workshop on how to use their services, including discounts, helping those with special needs and offered to bring a bus to their locations to have tours for clients so they understand how to use their system.
- AV Hospital Forensic Unit and ER provided presentations on their services and linkage processes. The Forensic Unit came a second time with the detective that works with them to discuss non-lethal strangulation and gave the AV HN participants instructions on how to assist sexual assault victims. The unit provided specific contact information for clinicians and community members and instructed them to call the unit directly so that the victims did not have to wait in the ER.
- DMH has been working with AV Hospital to assist in linkage and referral processes and problem solving to deal with capacity issues across the AV.
- AV HN representatives presented to the High Desert Health System Advisory Board as well as to the weekly nursing staff meeting to discuss the HN and talk about increasing collaboration with HDRHS.







## SERVICE AREA 2

### HEALTH NEIGHBORHOOD: NORTHEAST SAN FERNANDO VALLEY

The following 16 service providers have signed the Northeast San Fernando Valley Health Neighborhood MOU:

<b>Mental Health Providers</b>	<ul style="list-style-type: none"><li>• Child &amp; Family Guidance Center</li><li>• El Centro de Amistad</li><li>• Hathaway-Sycamores Child and Family Services</li><li>• Hillview Mental Health Center</li><li>• Mission City Community Network, Inc.</li><li>• Northeast Valley Health Corporation</li><li>• Phoenix House of Los Angeles, Inc.</li><li>• San Fernando Valley Community Mental Health Center, Inc</li></ul>
<b>Health Providers</b>	<ul style="list-style-type: none"><li>• All for Health, Health for All, Inc.</li><li>• All Inclusive Community Health Center</li><li>• Mission City Community Network, Inc.</li><li>• Northeast Valley Health Corporation</li><li>• San Fernando Community Health Center</li></ul>
<b>Substance Use Disorder Treatment Provider</b>	<ul style="list-style-type: none"><li>• CRI-HELP, Inc.</li><li>• Didi Hirsch – Via Avanta</li><li>• El Proyecto del Barrio</li><li>• Narcotic Addiction Treatment Agency, Inc.</li><li>• The Teen Project, Inc.</li></ul>

The following participants have also been attending the Northeast San Fernando Valley Health Neighborhood:

- Consumer Advocates
- County of Los Angeles  
Department of Probation
- County of Los Angeles  
Department of Public Health
- First 5 LA
- Grandparents as Parents
- Hope of the Valley
- LAPD's Mental Evaluation Unit
- Olive View Urgent Care Center
- Pacoima Beautiful
- Partners in Care
- Providence
- Youth Speak Collective



## Northeast San Fernando Valley Health Neighborhood (NESFV HN) Activities

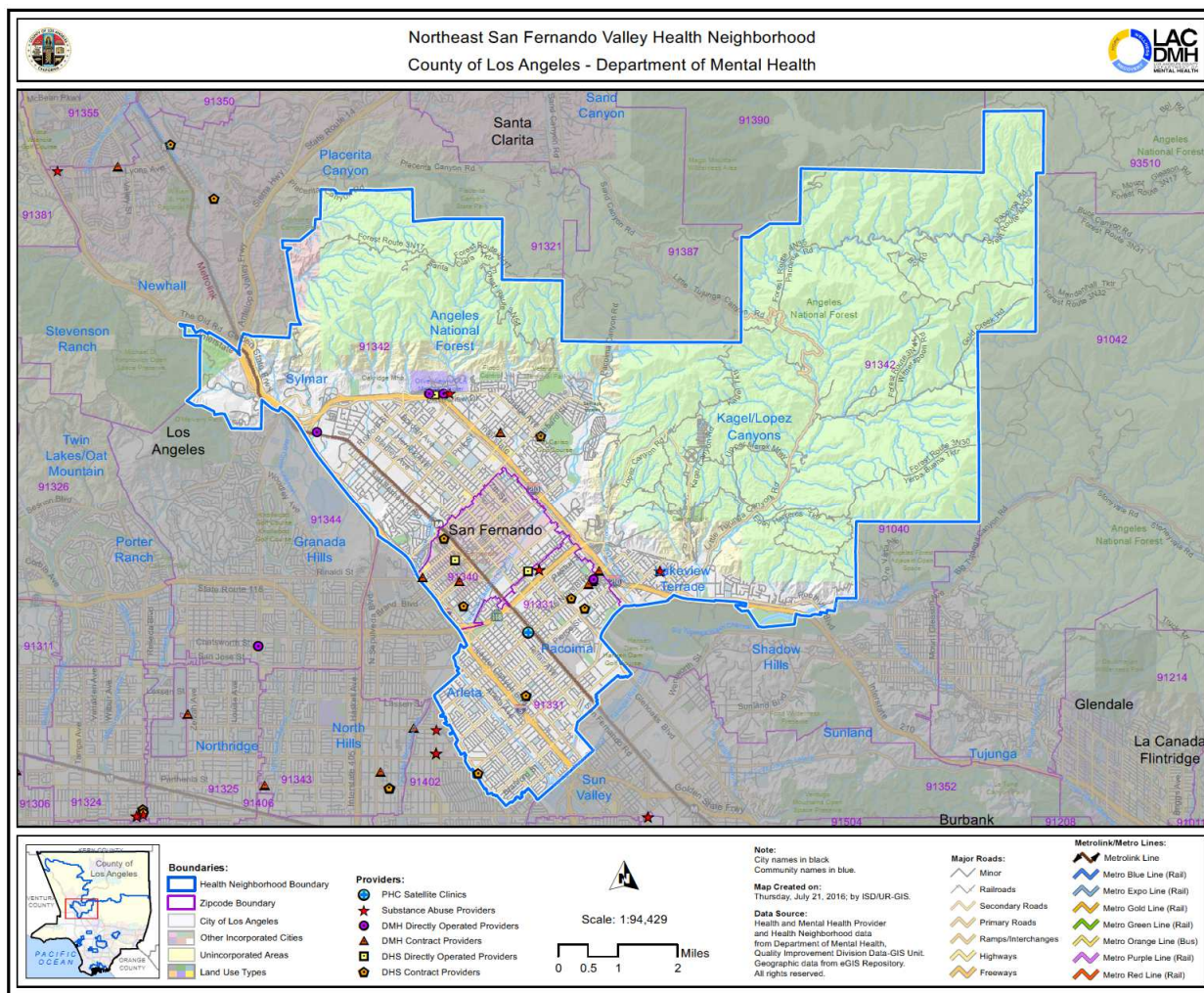
The following presentations have occurred in the NESFV HN meetings:

- Housing for the homeless population from community members: Hope of the Valley and Los Angeles Family Housing to share housing options for NESF Valley residents.
  - Each agency presented on their own program, noting requirements to be housed in their respective programs.
  - Each agency confirmed the need for additional housing resources for the homeless in this particular SA.
- DMH's EOB presented on Laura's Law to provide education on Laura's Law to NESFV HN attendees, and dispel some of the myths associated with it.
  - Presentation was important in noting what Laura's Law was NOT meant to do, such as not meant to "force medications".
  - Presentation also covered criteria for clients who would be referred.
- UCLA Integrated Substance Abuse Program presented on an Advanced Motivational Interviewing opportunity for the HN agencies to have their staff take this training to improve and/or further their clinical skill set.
- DPH spoke about their new role in the Health Care Agency, shared the different types of population health projects they are involved in, and information on some of their programs.
- Presentation by DMH regarding INNOVATIONS and call for submittals from community.
  - Presentation outlined requirements, and presenters offered to assist applicants on the proposal process, where applicable.



## Revised Northeast San Fernando Valley Health Neighborhood Map

NESFV HN participants are in the midst of making changes to their geographic boundaries to incorporate additional neighboring areas/cities in order to make the neighborhood more inclusive of the residents served by the participating providers.





**SERVICE AREA 3**  
**HEALTH NEIGHBORHOOD: EL MONTE**

The following 17 service providers have signed the El Monte Health Neighborhood MOU:

<b>Mental Health Providers</b>	<ul style="list-style-type: none"> <li>• Alma Family Services</li> <li>• DMH-Arcadia Mental Health Center</li> <li>• DMH-DHS Collaboration Program at El Monte Comprehensive Health Center</li> <li>• Enki Health &amp; Research Systems, Inc.</li> <li>• Five Acres</li> <li>• Foothill Family Services</li> <li>• Hathaway-Sycamores Child &amp; Family Services</li> <li>• Heritage Clinic</li> <li>• Pacific Clinics</li> <li>• Social Model Recovery Systems</li> <li>• SPIRITT Family Services</li> <li>• Violence Intervention Program</li> </ul>
<b>Health Providers</b>	<ul style="list-style-type: none"> <li>• AltaMed Health Services Corp</li> <li>• DHS-El Monte Comprehensive Health Center</li> </ul>
<b>Substance Use Disorder Treatment Provider</b>	<ul style="list-style-type: none"> <li>• Aegis Treatment Centers, LLC.</li> <li>• Social Model Recovery Systems</li> <li>• SPIRITT Family Services</li> </ul>
<b>Public Health Provider</b>	<ul style="list-style-type: none"> <li>• DPH-Monrovia Health Center</li> </ul>

The following participants have also been attending the El Monte Health Neighborhood:

- American Red Cross
- Asian American Christian Counseling Services
- Best Start - El Monte
- Bridges, Inc.
- Buddhist Tsu Chi Foundation
- CHAP Care
- El Monte City School District
- Estudiando las Escrituras
- Faith Community Church
- First Church of Christ Scientist
- First Lutheran Church of El Monte
- HealthCare Partners
- Joy Youth Services
- Magnolia Learning Center
- Mission City Community Network
- Mountain View School District
- Nativity Church
- Pomona Health Center
- Prototypes
- St. Louis de Marillac
- UCLA - ISAP
- University of the West Chaplaincy Program
- Vietnamese Seventh Day Adventist Church
- YWCA



### El Monte Health Neighborhood Activities

- The El Monte HN participated in the Viva San Gabriel Valley “Open Streets” on June 12, 2016 and provided information to local residents. It is estimated that approximately 250 attendees stopped by the HN booth for information.
- DMH representatives from the El Monte HN did a presentation at a Clergy Breakfast (September 2015) regarding the County's rollout of Health Neighborhoods, and in particular shared about the collaboration efforts being made in the El Monte HN.
- Over the course of the Fiscal Year, routine presentations have been made by HN participants during the monthly HN meetings covering the scope of services and outreach being made available to residents of El Monte. This includes: the faith-based community, service delivery providers, schools, and social service agencies, as well as other types of organizations with a mission to better serve the El Monte HN residents.



**SERVICE AREA 4**  
**HEALTH NEIGHBORHOOD: BOYLE HEIGHTS**

The following 13 service providers have signed the Boyle Heights Health Neighborhood MOU:

<b>Mental Health Providers</b>	<ul style="list-style-type: none"> <li>• Alma Family Services</li> <li>• Behavioral Health Services, Inc.</li> <li>• Children's Institute, Inc.</li> <li>• DHS-USC Medical Center</li> <li>• ENKI Health &amp; Research Systems, Inc.</li> <li>• Exodus Recovery</li> <li>• Hathaway-Sycamores Child and Family Services</li> <li>• Pacific Clinics</li> <li>• Para Los Ninos</li> <li>• Violence Intervention Program</li> </ul>
<b>Health Providers</b>	<ul style="list-style-type: none"> <li>• AltaMed Health Services Corporation</li> <li>• JWCH Institute, Inc.</li> </ul>
<b>Substance Use Disorder Treatment Provider</b>	<ul style="list-style-type: none"> <li>• Behavioral Health Services, Inc.</li> </ul>
<b>Public Health Provider</b>	<ul style="list-style-type: none"> <li>• DPH-Central Health Center</li> </ul>

The following participants have also been attending the Boyle Heights Health Neighborhood:

- American Diabetes Association
- American Heart Association
- Arthritis Foundation
- Building Healthy Communities – Boyle Heights
- County of Los Angeles Department of Children and Family Services
- East Los Angeles Women's Center
- Jovenes, Inc.
- L.A. Care Health Plan
- Maternal Child Health Access
- Mexican American Opportunity Foundation
- National Alliance for the Mentally Ill
- National Multiple Sclerosis Society
- The Wellness Center at Historic General Hospital
- Women, Infants, & Children (WIC)
- Worker Education & Resource Center, Inc.



## Boyle Heights Health Neighborhood (BH HN) Activities

- The BH HN has begun collaborating more closely with The Wellness Center at Historic General Hospital (TWC). Agencies that are housed at TWC are now attending and have begun sharing information on what they do as well as learning about what services the BH HN participants provide. This collaboration has been very successful in the early stages with feedback suggesting that their inclusion into the neighborhood will add knowledge and access to a range of services and supports the BH HN participants did not previously have. The BH HN participants and TWC agencies have also planned to look at referral and care coordination processes for the residents of Boyle Heights. The BH HN monthly meetings have been moved to TWC going forward.
- Many BH HN agencies have reported that the greatest benefit of participation is the new relationships that they have built with the other members of the BH HN. Most notably, ENKI and AltaMed have developed a strong referral relationship as a result of the BH HN.
- The Department of Public Health provided *Public Health 101* training to assist participants in learning about their programs and how to link consumers to their services.
- The Department of Public Health has also had participants from TB Control attend and discussed starting a pilot program with some of the other BH HN agencies in assisting with case management for their TB patients to link them with other needed services.
- The BH HN participants have been sending representation to the City Lights Program coordinated by the Department of Public Health.
- BH HN participants also attended the *All Faith Meeting* on September 10, 2015 hosted by DMH which was a discussion with faith leaders about the role they can play in the Health Neighborhoods.
- For the January 2016 BH HN meeting, participants were asked to bring front line staff. This was an opportunity for them to meet each other, hear about what each participant provides, and share successes and challenges of participation in the BH HN.
- Representatives from L.A. Care provided a presentation on SB75 to assist providers in preparing for the new coverage changes and ways to assist their staff in accessing information from the health plans.
- Building Healthy Communities – Boyle Heights provided a presentation on the work that they are doing and shared how BH HN participants can become involved. As a result of this meeting, BH HN, The Wellness Center, and Building Healthy Communities – Boyle Heights are scheduling workgroups to discuss referrals, cross-training (MHFA, etc.), and how to further collaboration between all three.



## SERVICE AREA 4

### HEALTH NEIGHBORHOOD: HOLLYWOOD

Beginning in January of 2016, several agencies, providers, and groups from the Hollywood area were invited to attend an initial meeting to discuss the creation of the Hollywood Health Neighborhood. In June of 2016, a multi-party MOU was established to formalize the collaborative working relationships between and among these participants.

The following 12 service providers and participants have signed the Hollywood Health Neighborhood MOU:

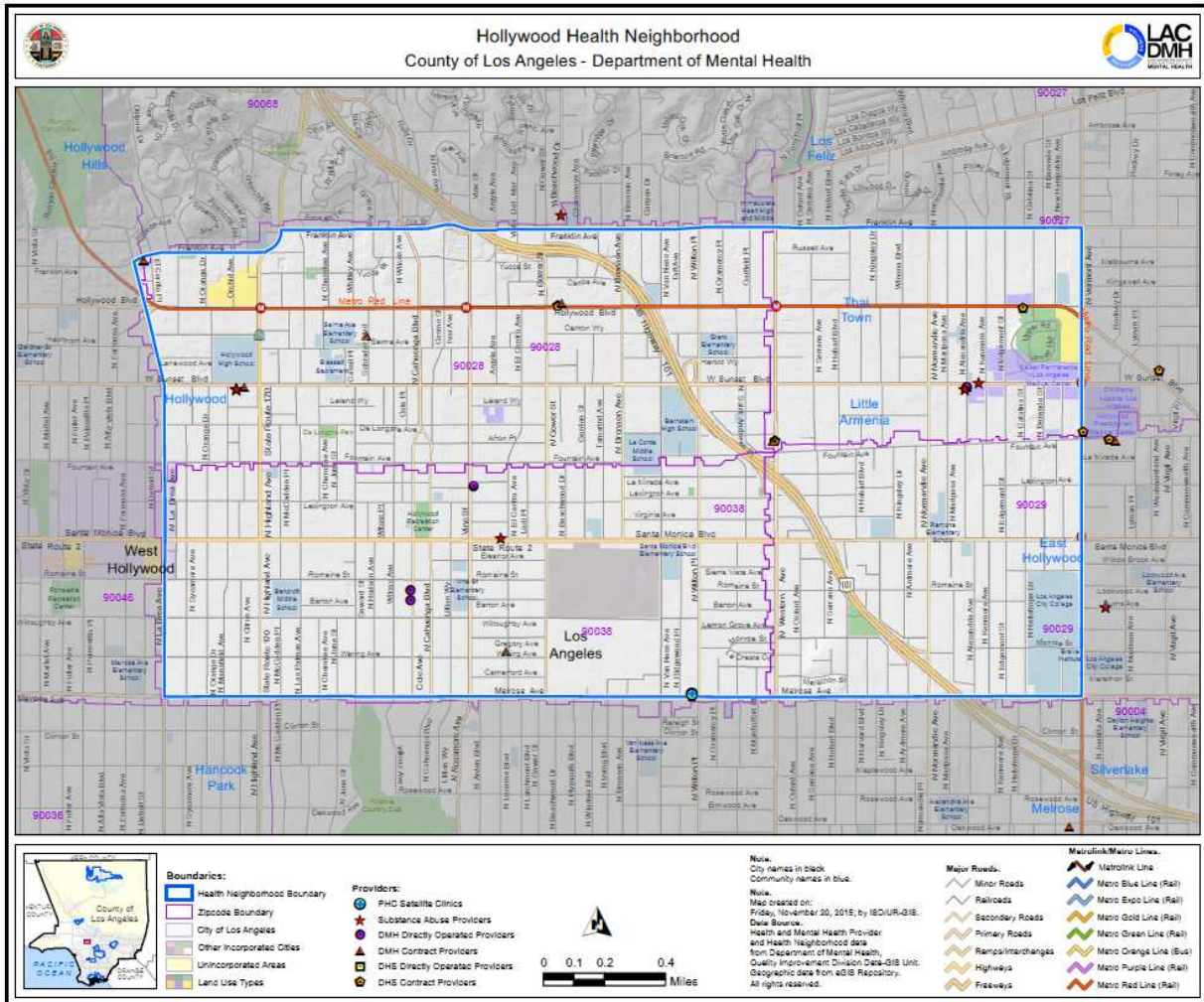
<b>Mental Health Providers</b>	<ul style="list-style-type: none"> <li>• Aviva Family &amp; Child Services</li> <li>• BHS Hollywood Family Recovery Center</li> <li>• DMH-Hollywood Mental Health Center</li> <li>• DMH-Hollywood Mental Health FSP</li> <li>• DMH-Hollywood Wellness Center</li> <li>• DMH-SA 4 Specialized Foster Care</li> <li>• Hathaway-Sycamores Child and Family Services</li> <li>• Homeless Health Care Los Angeles</li> <li>• Jewish Family Services of Los Angeles</li> <li>• Mission City Community Network</li> <li>• Saban Community Clinic</li> <li>• Step Up on Second</li> </ul>
<b>Health Providers</b>	<ul style="list-style-type: none"> <li>• Mission City Community Network</li> <li>• Saban Community Clinic</li> </ul>
<b>Substance Use Disorder Treatment Provider</b>	<ul style="list-style-type: none"> <li>• Behavioral Health Services, Inc.</li> <li>• Homeless Health Care Los Angeles</li> </ul>
<b>Public Health Provider</b>	<ul style="list-style-type: none"> <li>• Homeless Health Care Los Angeles – Syringe Exchange</li> </ul>
<b>Neighborhood Participants</b>	<ul style="list-style-type: none"> <li>• National Alliance for the Mentally Ill</li> <li>• Painted Brain</li> <li>• Women, Infants, &amp; Children (WIC)</li> </ul>

Other participants who have not yet signed but have been attending include:

- County of Los Angeles Department of Children and Family Services
- Count of Los Angeles Department of Public Health
- Kaiser Permanente
- QueensCare Health Center



# Hollywood Health Neighborhood Map





**SERVICE AREA 5**  
**HEALTH NEIGHBORHOOD: MAR VISTA-PALMS**

The following 3 service providers have been engaged in an existing collaboration and were granted Health Neighborhood status in March 2016:

<b>Mental Health Provider</b>	<ul style="list-style-type: none"><li>• Westside Infant-Family Network (WIN)</li><li>• Venice Family Clinic</li></ul>
<b>Health Provider</b>	<ul style="list-style-type: none"><li>• Venice Family Clinic</li></ul>
<b>Substance Use Disorder Treatment Provider</b>	<ul style="list-style-type: none"><li>• Venice Family Clinic</li></ul>
<b>Other</b>	<ul style="list-style-type: none"><li>• Westside Children's Center</li></ul>

The following additional participants have been attending the Mar Vista-Palms Health Neighborhood:

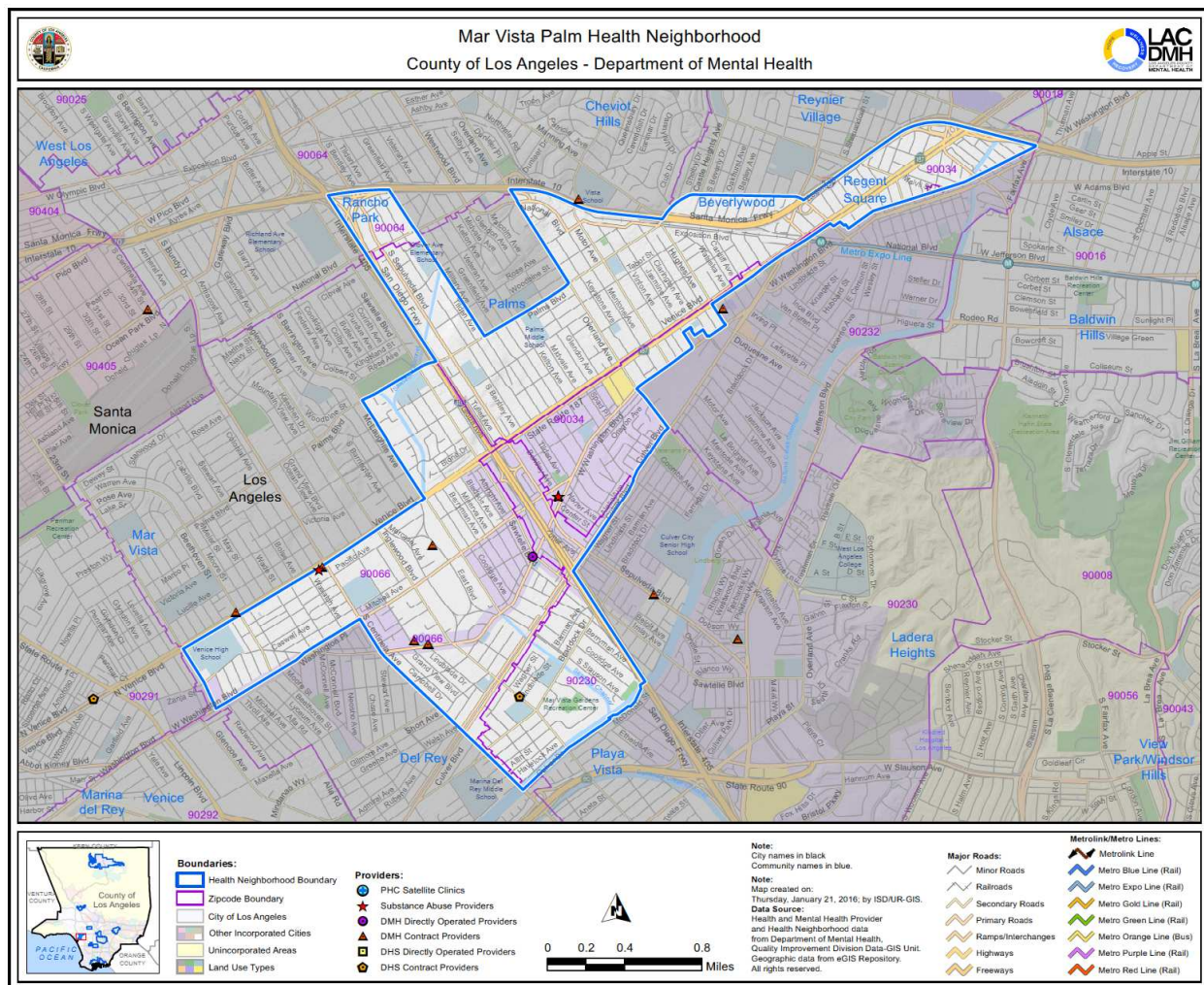
- Maternal Mental Health NOW
- Safe Place for Youth (SPY)
- Sojourn, Ocean Park Community Center (OPCC)



## Mar Vista-Palms Health Neighborhood Activities

- Following transformation to the Mar Vista-Palms Health Neighborhood, the initial 3 agencies (Westside Children's Center, Westside Infant Family Network and Venice Family Clinic) have taken steps to expand partnerships and to review the direction of the Health Neighborhood. Plans are underway to enter into an MOU with additional participating agencies.
- Significant efforts were undertaken to develop the most effective means to track attempts at referral and care coordination across an expanded array of provider agencies.

## Mar Vista-Palms Health Neighborhood Map





## SERVICE AREA 6

### HEALTH NEIGHBORHOODS: MLK/WATTS-WILLOWBROOK

The following 18 service providers have signed the MLK/Watts-Willowbrook Health Neighborhood MOU:

<b>Mental Health Providers</b>	<ul style="list-style-type: none"><li>• Child and Family Guidance Center</li><li>• DMH-A.F. Hawkins Mental Health Center</li><li>• Barbour &amp; Floyd Medical Associates</li><li>• DMH/DHS Collaboration Program MLK</li><li>• Drew Child Development Corporation</li><li>• EMQ Families First, Inc.</li><li>• Exodus Foundation</li><li>• Exodus Recovery, Inc.</li><li>• Hathaway-Sycamores Child and Family Services</li><li>• Los Angeles Guidance Clinic</li><li>• Personal Involvement Center</li><li>• Southern California Health and Rehabilitation Program</li><li>• SHIELDS for Families, Inc.</li><li>• St. John's Well Child and Family Center</li><li>• Star View Community Services</li><li>• Tessie Cleveland Community Services</li><li>• Telecare Corporation</li></ul>
<b>Health Providers</b>	<ul style="list-style-type: none"><li>• DHS-Martin Luther King, Jr. Outpatient Center, OASIS Clinic</li><li>• DHS-Martin Luther King, Jr. Outpatient Center</li><li>• DHS-Dollarhide Health Center</li><li>• St. John's Well Child and Family Center</li></ul>
<b>Substance Use Disorder Treatment Provider</b>	<ul style="list-style-type: none"><li>• SHIELDS for Families, Inc</li><li>• St. John's Well Child and Family Center</li></ul>

The following participants have also been attending the Northeast San Fernando Valley Health Neighborhood:

- Fair Housing Foundation
- Children's Institute International, Inc.
- SSG Homeless Outreach Program Integrated System (HOPICS)
- Watts Healthcare Corporation
- Watts Labor Community Action Committee



### MLK/Watts-Willowbrook Health Neighborhood Activities

MLK/Watts-Willowbrook Health Neighborhood continued to develop and expand by increasing the number and diversity of participants including the following:

- Fair Housing Foundation
  - SSG Homeless Outreach Program Integrated System (HOPICS)
  - Watts Healthcare Corporation
- MLK/Watts-Willowbrook HN has implemented the Vacancy Announcement Notification System (VANS) to share the capacity of participating mental health agencies online.
- Participants completed the Health Neighborhood Participant Survey. The feedback from the survey will be utilized to further develop the MLK/Watts-Willowbrook Health Neighborhood.
- The participants also began tracking referrals and attempts to coordinate care across participating provider agencies in February, 2016.



**SERVICE AREA 7**  
**HEALTH NEIGHBORHOOD: SOUTHEAST LOS ANGELES**

The following 18 service providers have signed the Southeast Los Angeles Health Neighborhood MOU:

<b>Mental Health Providers</b>	<ul style="list-style-type: none"> <li>• DMH-American Indian Counseling Center</li> <li>• Alma Family Services</li> <li>• Almansor Center</li> <li>• DMH-Centro De Bienestar</li> <li>• CHCADA Inc.</li> <li>• ENKI Health and Research Systems Inc.</li> <li>• Hathaway-Sycamore Child and Family Services</li> <li>• Penny Lane Centers</li> <li>• DMH-San Antonio Mental Health Center</li> <li>• SPIRITT Family Services</li> <li>• Telecare Corporation</li> <li>• The Village Family Services</li> </ul>
<b>Health Providers</b>	<ul style="list-style-type: none"> <li>• AltaMed Health Services Corporation</li> <li>• Avanti Hospitals</li> <li>• Family Health Care Center of Greater Los Angeles, Inc.</li> <li>• JWCH Institute, Inc.</li> <li>• South Central Family Health Center</li> </ul>
<b>Substance Use Disorder Treatment Provider</b>	<ul style="list-style-type: none"> <li>• Mela Counseling Services Center</li> <li>• Southern California Alcohol &amp; Drug Programs, Inc.</li> </ul>
<b>Public Health Provider</b>	<ul style="list-style-type: none"> <li>• DPH-Whittier Health Center</li> </ul>

The following participants have also been attending the Southeast Los Angeles Health Neighborhood:

- American Lung Association
- Best Start Community-Southeast Los Angeles
- City of Commerce Public Safety & Community Services Dept
- City of Huntington Park
- DHS Rancho Los Amigos National Rehabilitation Center
- DMH Older Adults Systems of Care
- DMH SA 7 Promotoras
- DMH SA 7 SB 82 Team
- DMH SA 7 Specialized Foster Care
- East Los Angeles Regional Center
- Human Services Association
- Los Angeles Center for Alcohol and Drug Abuse
- Los Angeles Unified School District
- Montebello Unified School District
- National Alliance for the Mentally Ill
- One Way Client Run Center
- SHARE – The Self-Help and Recovery Exchange
- St. Francis Medical Center
- Su Casa – Ending Domestic Violence Organization
- WIC
- YMCA
- YWCA



## Southeast Los Angeles Health Neighborhood (SELA HN) Activities

- SELA HN is focused on improving care coordination processes and has experimented with "Hot Topics" at every monthly meeting. "Hot Topics" allows SELA HN Providers to have a monthly brainstorming session on referral and care coordination issues.
- A SELA HN Referral Contact Directory has been developed and is updated on a monthly basis to ensure efficient communication amongst the SELA HN providers.
- SELA HN providers utilize the SELA HN distribution list as a resource tool. Recently a SELA HN provider reached out to other SELA HN providers via email to inquire about housing resources for a client that she was working with. Several SELA HN providers immediately responded and provided a whole host of resources. At the next SELA HN Providers meeting, all the participants highlighted the success of this outreach and agreed to continue using this as a mechanism for leveraging resources.
- The Exide Spill has caused pollutant devastation that primarily impacted the residents of Southeast Los Angeles. SELA HN has been involved in the following efforts to collaborate on the Exide Spill clean-up:
  - The DPH/DHS/DMH led Exide Spill Task Force was established to address the needs of the residents and the Task Force efforts continues to be on the agenda at every SELA HN meeting. SELA HN providers have used several of the meetings to discuss opportunities to collaborate and prepare to serve the residents that have been impacted by the Exide Spill.
  - Promotoras have been trained by DPH on lead poisoning, lead clean-up and the impact of the Exide Spill. The objectives are: to expand outreach efforts to affected communities, increase awareness on the Exide contamination, provide resources, and improve community health.
  - Promotoras joined DPH staff and provided door-to-door outreach to homes across Southeast LA within a 5 day period. Approximately 1200 people have been tested for lead levels. During their 2<sup>nd</sup> door-to-door outreach effort, DPH staff and Promotoras were able to reach an additional 500 homes.
- DPH and the Promotoras teamed up again and connected with the Plaza Community Center collaboration. Through this connection they have presented at the Child Welfare monthly coalition meeting in which 40 community providers were in attendance.
- SELA HN has presented to and continues to participate in the DPH SPA 7 Regional Planning Network meetings to strengthen partnerships and further collaboration within this service area.
- SELA HN Participants: DPH, LAUSD and DMH presented on the SELA HN at the USC Forum: Social Work Perspectives of Integrated Health Care on April 20, 2016.



**SERVICE AREA 8**  
**HEALTH NEIGHBORHOOD: CENTRAL LONG BEACH**

The following 7 service providers have signed the Central Long Beach Health Neighborhood MOU:

<b>Mental Health Providers</b>	<ul style="list-style-type: none"> <li>• DMH-Long Beach Asian Pacific Islander Family Mental Health Center</li> <li>• DMH-Long Beach Child Adolescent Program</li> <li>• DMH/DHS-Collaboration Program Long Beach Comprehensive Health Center</li> <li>• DMH-Long Beach Mental Health Center</li> <li>• Mental Health America of Los Angeles</li> </ul>
<b>Health Providers</b>	<ul style="list-style-type: none"> <li>• DHS-Long Beach Comprehensive Health Center</li> <li>• The Children's Clinic</li> </ul>
<b>Substance Use Disorder Treatment Provider</b>	<ul style="list-style-type: none"> <li>• Behavioral Health Services, Inc.</li> <li>• Safe Refuge</li> </ul>
<b>Public Health Provider</b>	<ul style="list-style-type: none"> <li>• Long Beach Department of Health and Human Services</li> </ul>

The following participants have also been attending the Central Long Beach Health Neighborhood:

- 1736 Family Crisis Center
- Asian American Drug Abuse Program
- California Endowment Building Healthy Communities – Central Long Beach
- Cambodian Association of America
- First 5 LA Best Start Community – Central Long Beach
- For the Child, Inc.
- Harborview Community Services Center
- National Alliance for the Mentally Ill – Long Beach
- Pacific Asian Counseling Services
- St. Mary's Hospital
- The Guidance Center
- WIC Program - Long Beach Department of Health & Human Services



### Central Long Beach Health Neighborhood (CLB HN) Activities

- The CLB HN is interested in improving care coordination processes and the CLB HN sub-group focuses on troubleshooting referral and care coordination issues at every monthly meeting.
- Monthly Provider meetings are held at different provider sites each month and agency tours are given following each meeting.
- A CLB HN Referral Contact Directory has been developed and is updated on a monthly basis to ensure efficient communication amongst the CLB HN providers.
- DMH-SA 8 participated in:
  - The City of Long Beach's Behavioral Health Diversion from Criminal Justice System planning event to provide input for the city to improve processes to serve those with mental illness who become involved in the criminal justice system.
  - The City of Long Beach's planning meeting for the Long Beach Promise Zone (LBPZ) Grant application to give input into developing goals and trauma-based strategies that promote health and improve access to health care for residents in the LBPZ Health Neighborhood.
  - The Trauma-Informed LB Task Force (formerly EBBI Advisory Council) meeting to provide feedback and brainstorm regarding next steps to create a plan and approach to make Long Beach a Trauma Informed City.
- DMH-SA 8 Administration coordinated/provided resource tables at community health and neighborhood fairs in Central Long Beach, such as the one held at one of The Children's School Based Health Centers (SBHC). These fairs typically include health screenings and several other community resources.
- WIC Long Beach gave a presentation on their 4 Long Beach sites at the CLB HN subgroup meeting. In a subsequent discussion following this presentation, WIC Long Beach identified the need to receive more training in mental health services.
- NAMI Long Beach gave a presentation at the CLB HN subgroup meeting.
- DMH presented on Health Neighborhoods to the Best Start Community-Central Long Beach Leadership team.
- DMH presented on:
  - The CLB HN efforts at the DPH Service Area 8 Regional Network Meeting.
  - Mental health services and the CLB HN efforts at the Board of Health Meeting for the Long Beach Department of Health & Human Services.
- DMH provided MH Promotoras presentations for community partners of CLB HN. 52 community presentations were provided on a variety of mental health disorders, child abuse prevention and suicide prevention. Our Promotoras also attended community health fairs to outreach and provide information on mental health to an additional 294 attendees.