

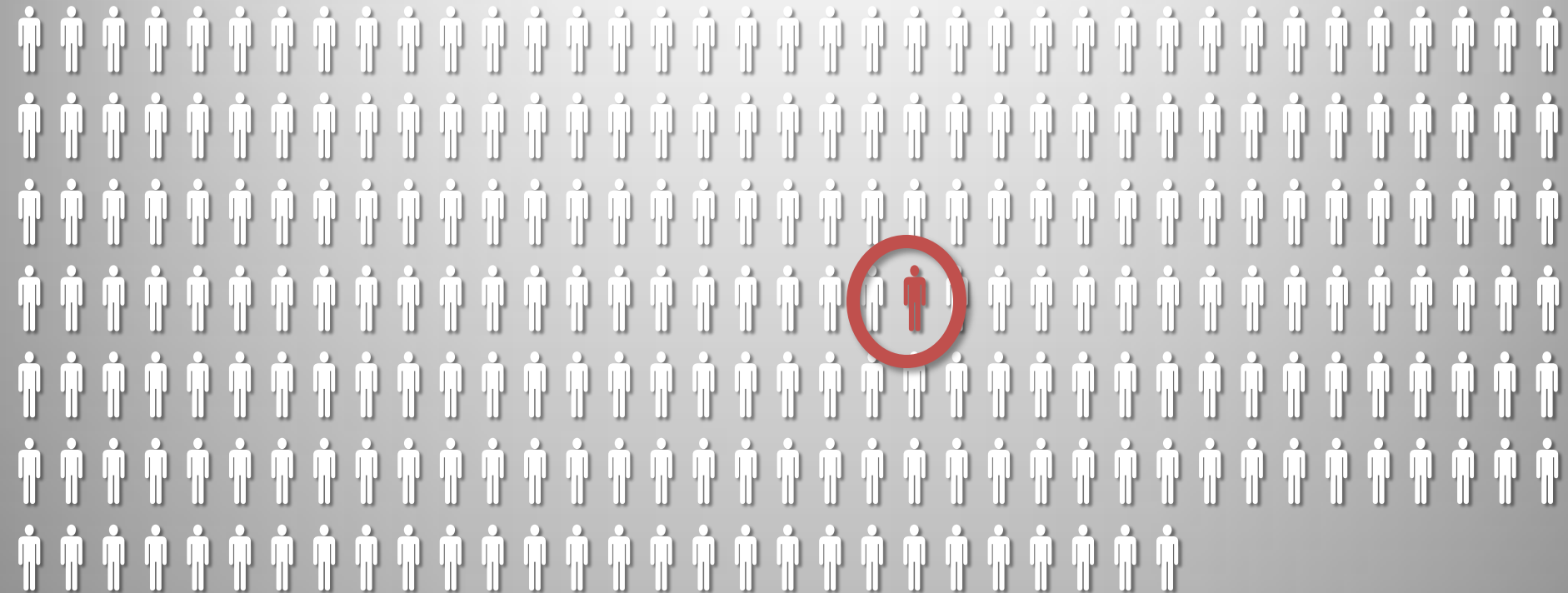
# HOUSING FOR HEALTH

LOS ANGELES COUNTY DEPARTMENT OF HEALTH SERVICES



Health Services  
LOS ANGELES COUNTY

# MAGNITUDE



57,737 people, or **1 OUT OF EVERY 250 RESIDENTS**,  
are homeless in LA County

# GOALS

---

- 1. Create 10,000 units of housing quickly**
- 2. End homelessness in LA County**
- 3. Reduce inappropriate use of expensive health care resources**
- 4. Improve health outcomes for vulnerable populations.**

# WHY HOUSING MATTERS TO DHS

---

- **\$70 million/year** inpatient costs for homeless patients
- **\$32,000 cost savings per year** post housing
- **Reduction in hospital utilization** by homeless before and after housing:
  - **77% reduction** in emergency room visits
  - **77% reduction** in inpatient admissions
  - **85% reduction** in inpatient days

# POPULATION

**DHS provides permanent supportive housing to homeless DHS patients with complex physical and behavioral health conditions.**

# HEALTH OF CLIENTS

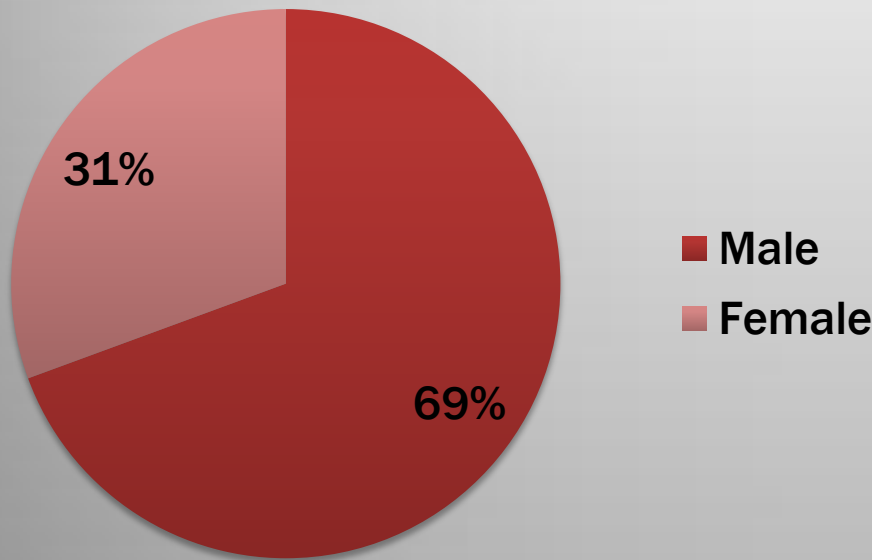
## MOST COMMON CONDITIONS:

- Hypertension
- Diabetes
- Asthma
- Heart disease
- Congestive heart failure
- Cancer
- HIV/AIDS
- Hepatitis
- Depression
- Bipolar disorder
- PTSD

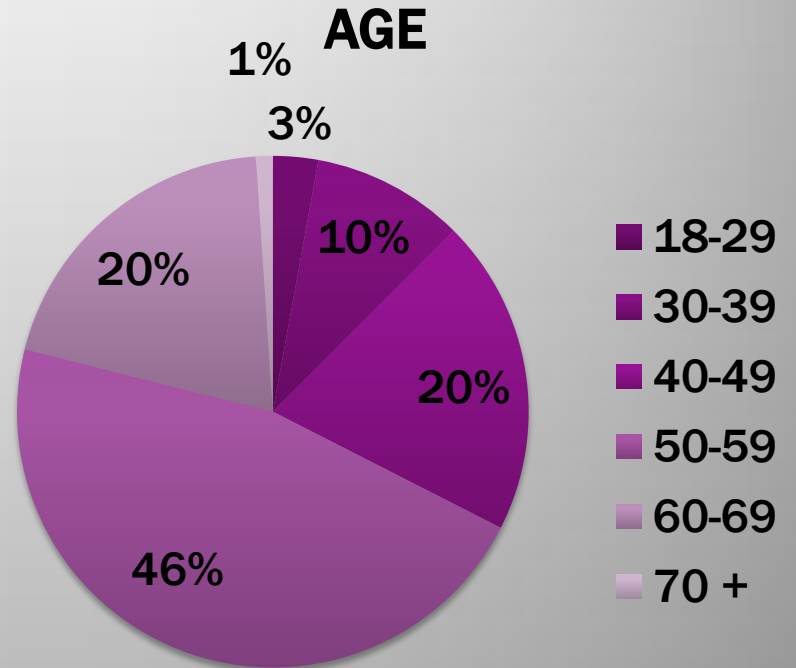
Most HFH clients have **MULTIPLE CHRONIC HEALTH CONDITIONS**

# CLIENTS HOUSED

## SEX



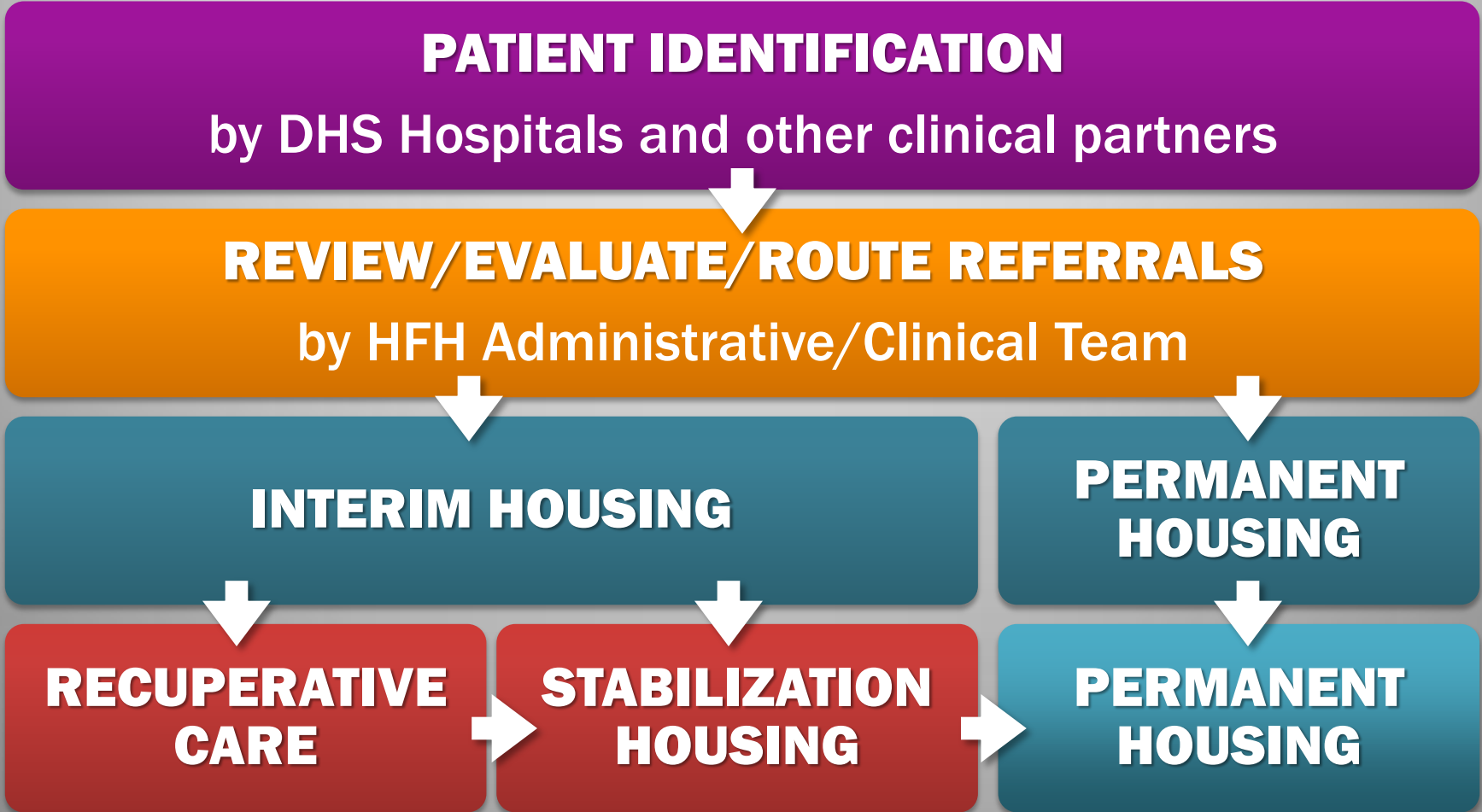
## AGE



N=282

Majority of clients housed are **MALE AND OVER AGE 50.**

# HFH CLIENT PROCESS





# INTENSIVE CASE MANAGEMENT

---

- **Every client** connected to services.
- **Individualized service** planning and linkages to health, mental health, and substance use disorder services.
- **Help clients retain** housing and reach health and wellbeing goals.
- **Services provided by** on-site staff or mobile teams.

# FLEXIBLE HOUSING SUBSIDY POOL



**Health Services**  
LOS ANGELES COUNTY  
FOR ANGELES COUNTY

Conrad N. Hilton  
FOUNDATION



**BRILLIANT  
CORNERS**

# NEW RENTAL SUBSIDY PROGRAM

---

- **Launched:** January 2014 by Housing for Health
- **Mission:** Quickly and effectively house homeless
- **Initial Funding:** \$18 million (w/ \$4 million from Conrad N. Hilton Foundation)
- **Housing Types:** Supportive; Affordable; Private market housing
- **Product Types:** Single unit; blocks of units; entire buildings

# RENTAL SUBSIDY OPERATOR

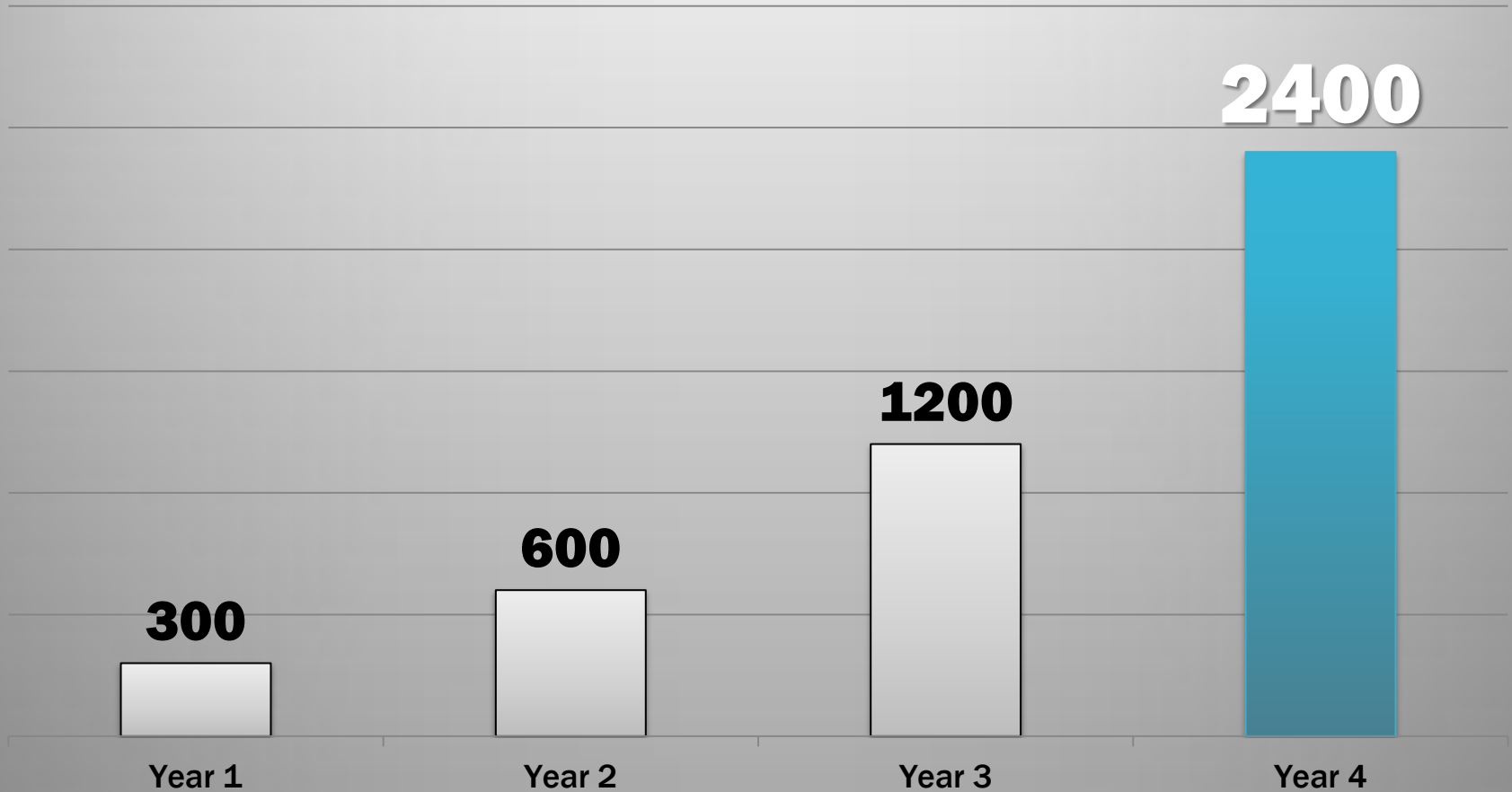
## BRILLIANT CORNERS Operates FHSP:

- **Identifies/secures inventory** of decent, safe, and affordable housing countywide
- **Agreements to lease/procure** housing
- **24/7 response** to property owners and landlords
- **Housing retention** services
- **Monthly rental subsidy** payments to owners/operators



# RENTAL SUBSIDIES GOALS

## CUMULATIVE RENTAL SUBSIDIES

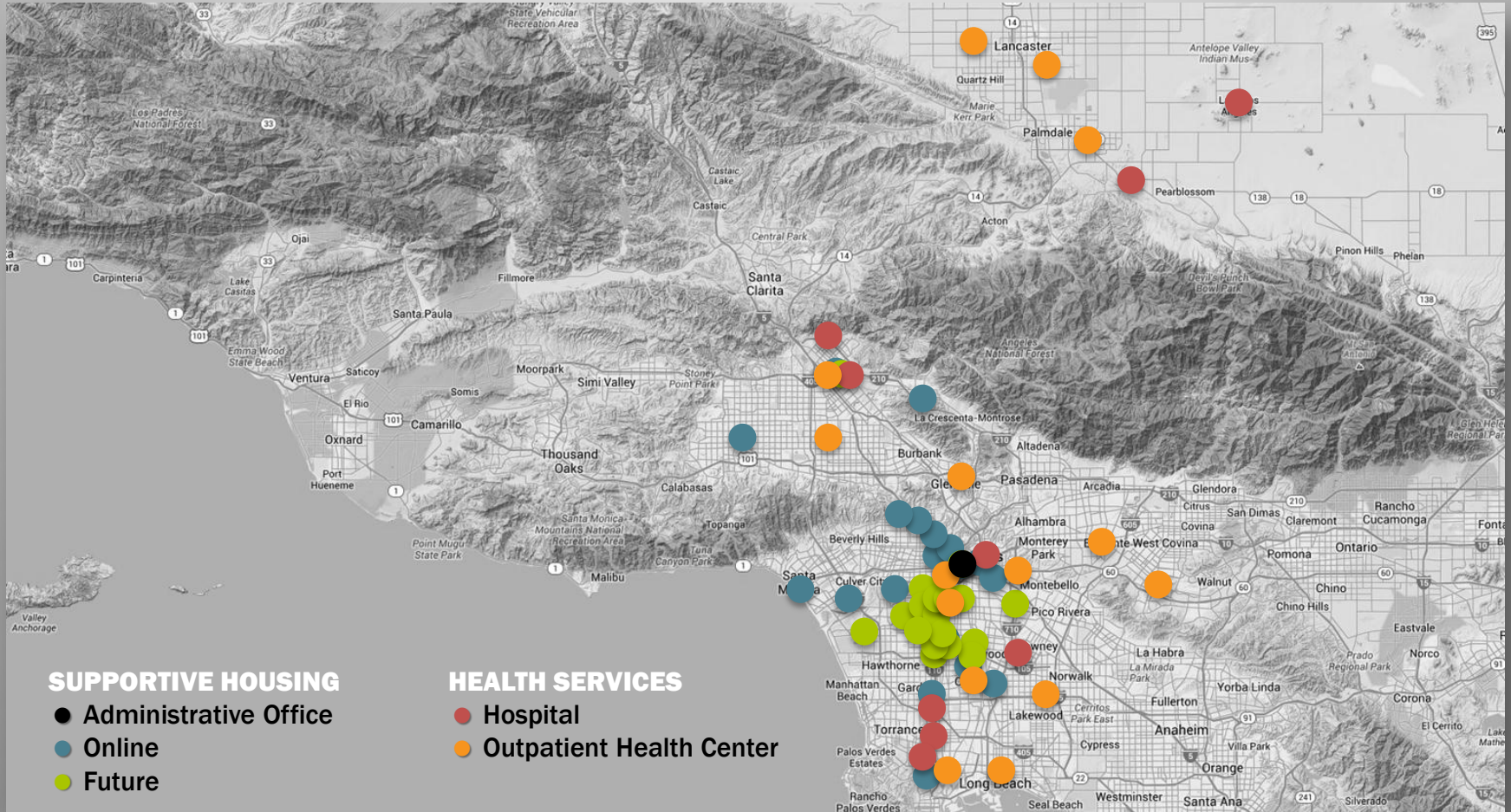


# SELECTED HFH PROJECTS



Health Services  
LOS ANGELES COUNTY

# HFH UNITS ARE COUNTYWIDE



# NEIGHBORHOOD STABILIZATION PROJECT

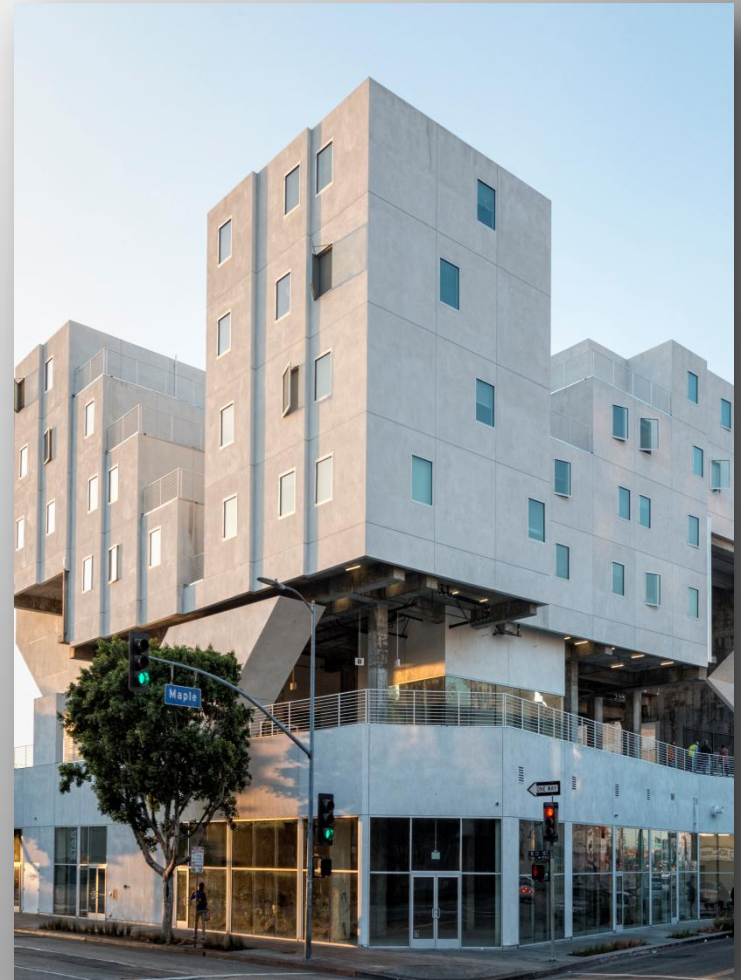
- **South Los Angeles**
- **Scattered site** program
  - 15 newly renovated properties
  - 56 total units
- **Acquired/renovated w/ NSP funding** in partnership with City of LA Housing Agencies
- **Support Services** provided by Housing Works





# THE STAR APARTMENTS

- **Downtown Los Angeles**
- **100-unit innovative housing** complex w/ modular pre-fabricated units
- **Owned by Skid Row Housing Trust** with onsite support services
- **15,000 sq. ft. of outdoor community space** (track, basketball, garden, kitchen, wellness center)
- **Future home of HFH primary care clinic** specializing in integrated health care for homeless DHS patients



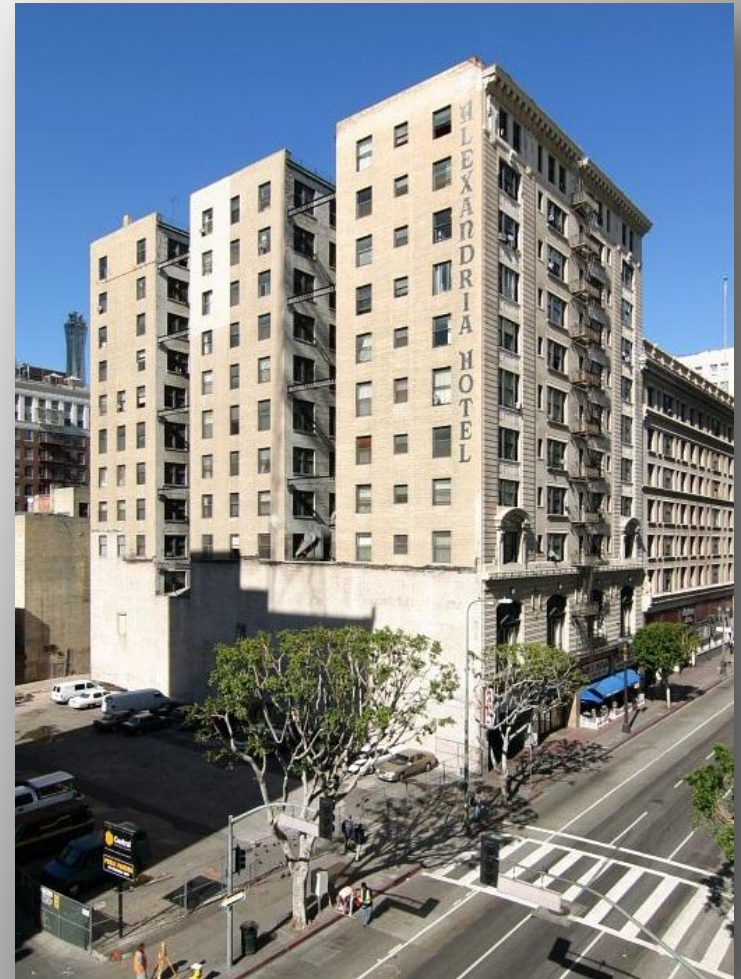
# PARKVIEW PLACE

- **City of San Fernando**
- **Senior complex (62+)**  
with 20 units set aside for  
DHS homeless high  
utilizers
- **Across from park** with  
senior center and aquatic  
park
- **Support services**  
provided by LA Family  
Housing



# THE ALEXANDRIA

- **Downtown Los Angeles**
- **Iconic landmark** once hosted Charlie Chaplin & Humphrey Bogart
- **Studio / Micro-Loft** Apartments
- **90 units for DHS patients** through FHSP
- **Support services** provided onsite by LAMP Community



# HOUSING

FOR

# HEALTH

LOS ANGELES COUNTY DEPARTMENT OF HEALTH SERVICES



Health Services  
LOS ANGELES COUNTY