



The Los Angeles County

Medical and Health Operational Area Coordinator Program

Medical and Health Operational Area Coordinator Program (MHOAC)

Our Authority:

The MHOAC Program as described in the Emergency Operations Manual (EOM) is based on the functional activities described in Health and Safety Code §1797.153.



Our Responsibilities:



Health and Safety Code §1797.153 specifies that the appointed MHOAC is responsible for ensuring the **development of the medical and health disaster plan** in cooperation with the:

- **County office of emergency services;**
- **Local public health department(s);**
- **Local environmental health department;**
- **Local department of mental health;**
- **Local emergency medical services agency;**
- **Local fire department**
- **The Regional Disaster and Medical Health Coordinator (RDMHC)**



**EMERGENCY MEDICAL
SERVICES AGENCY**
LOS ANGELES COUNTY

Medical and Health Operational Area Coordinator

The Director of the Los Angeles County
Emergency Medical Services (EMS) Agency
is the MHOAC for the Los Angeles
Operational Area.

Medical and Health Operational Area Coordinator Group

The Los Angeles County MHOAC Group consist of:

- City of Pasadena Public Health Department
- City of Long Beach Health and Human Services
- Los Angeles County Department of Mental Health
- Los Angeles County Department of Public Health
- Los Angeles County Department of Health Services
- Los Angeles County Office of Emergency Management – non MHOAC member



Medical and Health Operational Area Coordinator Group



The Los Angeles County MHOAC Working Group:

- Meet on a quarterly basis
- Review and revise the medical and health disaster plan otherwise known as the “MHOAC Coordination Plan”
- Develop medical and health coordination policies, procedures, and protocols
- Propose strategies to address potential incidents that may impact the medical and health sector
- Develop medical and health department operations center training requirements
- Develop methods to initiate data gathering and information sharing for the medical and health sector

MHOAC Coordination Plan?

The MHOAC Coordination Plan is the overarching medical and health disaster plan for the OA. The plan contains preparedness, response, recovery and mitigation functions in accordance with the State Emergency Plan.

The plan includes 17 core functions:

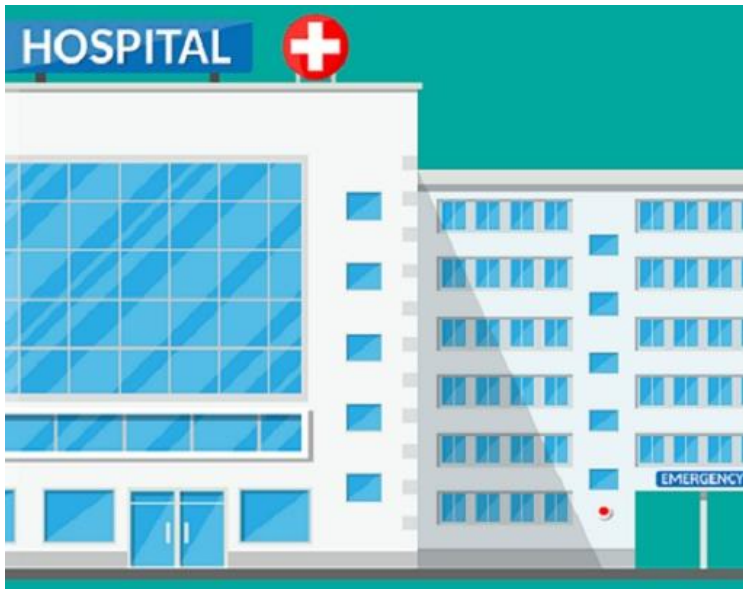




17 Core Functions

MHOAC 17 Core Functions:

1. Assessment of immediate medical needs
2. Coordination of disaster medical and health resources.
3. Coordination of patient distribution and medical evaluation.
4. Coordination with inpatient and emergency care providers.
5. Coordination of out-of-hospital medical care providers.





17 Core Functions

MHOAC 17 Core Functions:

6. Coordination and integration with fire agency personnel, resources, and emergency fire pre-hospital medical services.
7. Coordination of providers of non-fire based pre-hospital emergency medical services.

17 Core Functions

MHOAC 17 Core Functions:

8. Coordination of the establishment of temporary field treatment sites.
9. Health surveillance and epidemiological analyses of community health status.
10. Assurance of food safety.
11. Management of exposure to hazardous agents.





17 Core Functions

- MHOAC 17 Core Functions:
 - Provision or coordination of mental health services.
 - Provision of medical and health public information protective action recommendations.
 - Provision of coordination of vector control services.
 - Assurance of drinking water safety.
 - Assurance of the safe management of liquid, solid, and hazardous waste.
 - Investigation and control of communicable disease.





How we do what we do?

- Notification and Activation
- Situation Status and Reporting
- Polling and Reporting
- Resource Requesting
- Medical and Health Mutual Aid System

Primary Tasks

Notification and Activation:

- Triggers for Notification
- Levels of Response and Activation



LA COUNTY OPERATIONAL AREA

Medical Health Operational Area Coordination

FLASH REPORT

SIGNIFICANT EVENT – EMERGENCY – EVOLVING INCIDENT

Incident Name:

Type of Incident:

Mutual Aid Reg: I

Operational Area: Los Angeles

Reporting Entity: MHOAC / MEDICAL ALERT CENTER (MAC) / DHS DOC

Date: Time:

Prepared By	Contact Information
	MHOAC
562-347-1503	
562-347-1504	(Other contact):

Brief Summary

Critical Issues / Priorities (specifically to the impact to medical health system):

SITUATION REPORT (SITREP) EF-8
MEDICAL and PUBLIC HEALTH OA BRANCH REPORT

DRAFT ver. 2.7 24JULY2010

PEN & PAPER VERSION SECTION 1

ITEMS IN SECTION 1, A - J ARE MINIMUM REQUIRED ON ALL REPORTS.

A. Report Type <input type="checkbox"/> INITIAL <input type="checkbox"/> UPDATE # <input type="checkbox"/> FINAL		B. Report Status <input type="checkbox"/> 1. Advisory: No Action Required <input type="checkbox"/> 2. Alert: Action Required see "Critical Issues"		C. Report Creation Date/Time 1. Report Date: 2. Report Time:	
D. Incident / Event Information					
1. Mutual Aid Region:		2. Jurisdiction (OA):	3. Abbr:		
4. Incident / Event Name:		5. Incident Date:	6. Incident Time:		
7. Incident Location / Address:		8. Incident City:			
9. Incident Type:		10. Estimated Population Affected:			
11. Incident Level: <input type="checkbox"/> Level I - Op Area <input type="checkbox"/> Level II - Region <input type="checkbox"/> Level III - State <input type="checkbox"/> Unknown					
E. User Information 1. Report Creator: 2. Position: 3. Phone: 4. Cell, Pager, Alt Phone: 5. Email:					
F. Current Operational Area Medical and Health System Condition: <input type="checkbox"/> GREEN - Normal Operations: Situation Resolved <input type="checkbox"/> YELLOW - Under Control: NO Assistance Required <input type="checkbox"/> ORANGE - Modified Services: Assistance from within OA. <input type="checkbox"/> RED - Limited Services: SOME Assistance Required <input type="checkbox"/> BLACK - Impaired Services: MAJOR Assistance Required <input type="checkbox"/> GREY - Unknown					

Situation Status and Reporting:

- Situation Reporting (SitRep)
- Flash Reports

Polling and Reporting:

- ReddiNet
- HAvBED

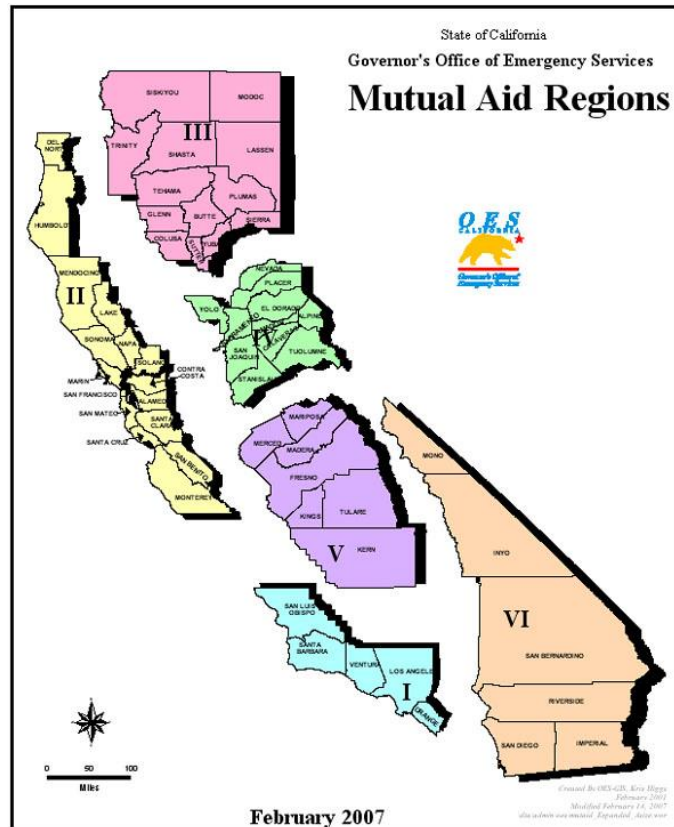


Resource Requesting:



- Resource Requests
- Resource Tracking
- Resource Management

Medical and Health Mutual Aid System:



- Mutual Aid
- MOU's

QUESTIONS?

