

Community Connects 2-25-2022

County of Los Angeles sent this bulletin at 02/25/2022 11:21 AM PST

Subscribe to updates from County of Los Angeles

Email Address e.g. name@example.com

Share Bulletin





February 25, 2022

LA County Health Services is proud to share Community Connects, a newsletter to share helpful information to our valued partners in the community. As you work to protect our diverse and most highly impacted communities from COVID-19, we will regularly provide you with updates, information and resources.

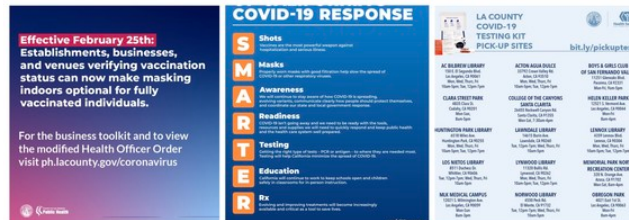
We appreciate your continued partnership and efforts!

COVID-19 UPDATES: VACCINE, TESTING & OTHER UPDATES

LA County is now past the winter surge. Stay safe by getting your COVID-19 vaccine or booster. If you have symptoms or have been exposed to COVID-19, please get tested. Many LA County COVID-19 sponsored testing sites will return to pre-surge schedules because of lower demand for testing. *Note: All testing options for LA County testing sites are PCR tests.*

Find a site near you: [Vaccinate LA County](#) [Testing in LA County](#)

NEW: Social Media Graphics Available [HERE](#)



LA COUNTY UPDATES TO HEALTH OFFICER ORDER

Beginning Friday, 2/25 LA County will allow establishments, businesses and venues verifying vaccination status to make masking indoors optional for fully vaccinated individuals. For more info, [click here](#).

CALIFORNIA COVID-19 RECOVERY PLAN

California's SMARTER Plan focuses on what has worked in the fight against COVID-19: shots, masks, awareness, readiness, testing, education & Rx treatments. We will continue applying the lessons we've learned to save lives & keep California moving forward. For more info, visit [COVID.CA.GOV](#)

WELCOME WITH DIGNITY DAY





Welcome with Dignity Day is a legal and social services fair for previously unaccompanied minors who have since been reunited with family after leaving government custody.

Join us and our partners to learn about free legal and social services, attend a Know-Your-Rights presentation, sign up for these services, and enjoy food and fun activities!

Saturday, February 26 | 12:00 pm - 3:00 pm

LA State Historic Park | 1245 N Spring St, Los Angeles, CA 90012

[LEARN MORE](#)

WEBINAR: GAPS IN HEALTH CARE ACCESS AMONG LGBT ADULTS IN CALIFORNIA

Join a webinar to hear study findings from the UCLA Center for Health Policy Research (CHPR) and Williams Institute looking at differences in health insurance coverage and health care access by sexual orientation and gender identity, revealing significant disparities within the LGBT community.



Monday, February 28, 2022 | Noon – 1 p.m. PT

[REGISTER HERE](#)

CHILDREN'S ORAL HEALTH MONTH - ORAL HEALTH FOR CHILDREN: BRIGHT SMILE FOR A BRIGHT FUTURE



Racism plays a key role in producing and sustaining oral health inequities by shaping the social conditions that are important to oral health. Check out [NEW](#) fact sheet that includes resources for accessing dental coverage!

[BRIGHT SMILES FACT SHEET](#)

LA COUNTY ONE-STOP CENTRALIZED RESOURCE HUB FOR OLDER ADULTS



Older adults, families, and caregivers can now easily navigate and access a wide-range of age-friendly County services in a new centralized resource hub for older adults in LA County. To learn more and access age-friendly resources, [click here](#).

Find additional resources specifically for older adults, visit One Degree, a community resource platform, [here](#).

EMERGENCY FOOD ASSISTANCE FOR EVERYONE NEAR YOU



Workforce Development and Aging Services community and senior centers are still providing emergency food assistance to families, older adults and other individuals including select congregate meal sites through our Emergency Food Assistance Program.

To learn more about our supportive services, [click here](#).

METRO BUS LOW-INCOME FARE IS EASY (LIFE) PROGRAM



The program offers fare discounts that can be applied toward the purchase of weekly and monthly transit passes on Metro and any LIFE participating transit agencies, or 20 free rides on any one of the participating transit agencies.

[APPLY HERE](#)

LA COUNTY DEPARTMENT OF MENTAL HEALTH PROMOTERS ("PROMOTORAS")



The LA County Department of Mental Health aims to reduce stigma associated with mental illness among culturally underserved communities in Los Angeles County by increasing awareness about mental health issues, removing barriers, and improving timely access to culturally and linguistically appropriate resources. You can coordinate a presentation by a Promoter/Promotora on many topics.

Click link below for listing of presentation subject matter topics.

[LEARN MORE](#)

LA COUNTY MOBILE TESTING FLYERS



COVID-19 mobile testing units are available in your community in addition to regular sites.

Customize testing flyers for your area, [click here](#) for more details.

LA COUNTY HELPFUL RESOURCES:

- [Community Vaccine Resource Page](#)
- [COVID-19 Testing](#)
- [Get Ahead - LA Financial Resources](#)
- [Vaccine Locator Tool](#)
- [COVID-19 Resources for Parents and Guardians](#) (Spanish: ph.lacounty.gov/covidinfopadres)
- [One Degree Community Resources](#)



Los Angeles County Health Services

[Website](#) | [Contact us](#) | [Newsletter Signup](#)

SUBSCRIBER SERVICES

[Manage Subscriptions](#) | [Help](#)

[Translate](#)



Health Services
LOS ANGELES COUNTY

Powered by



[Privacy Policy](#) | [Cookie Statement](#) | [Help](#)