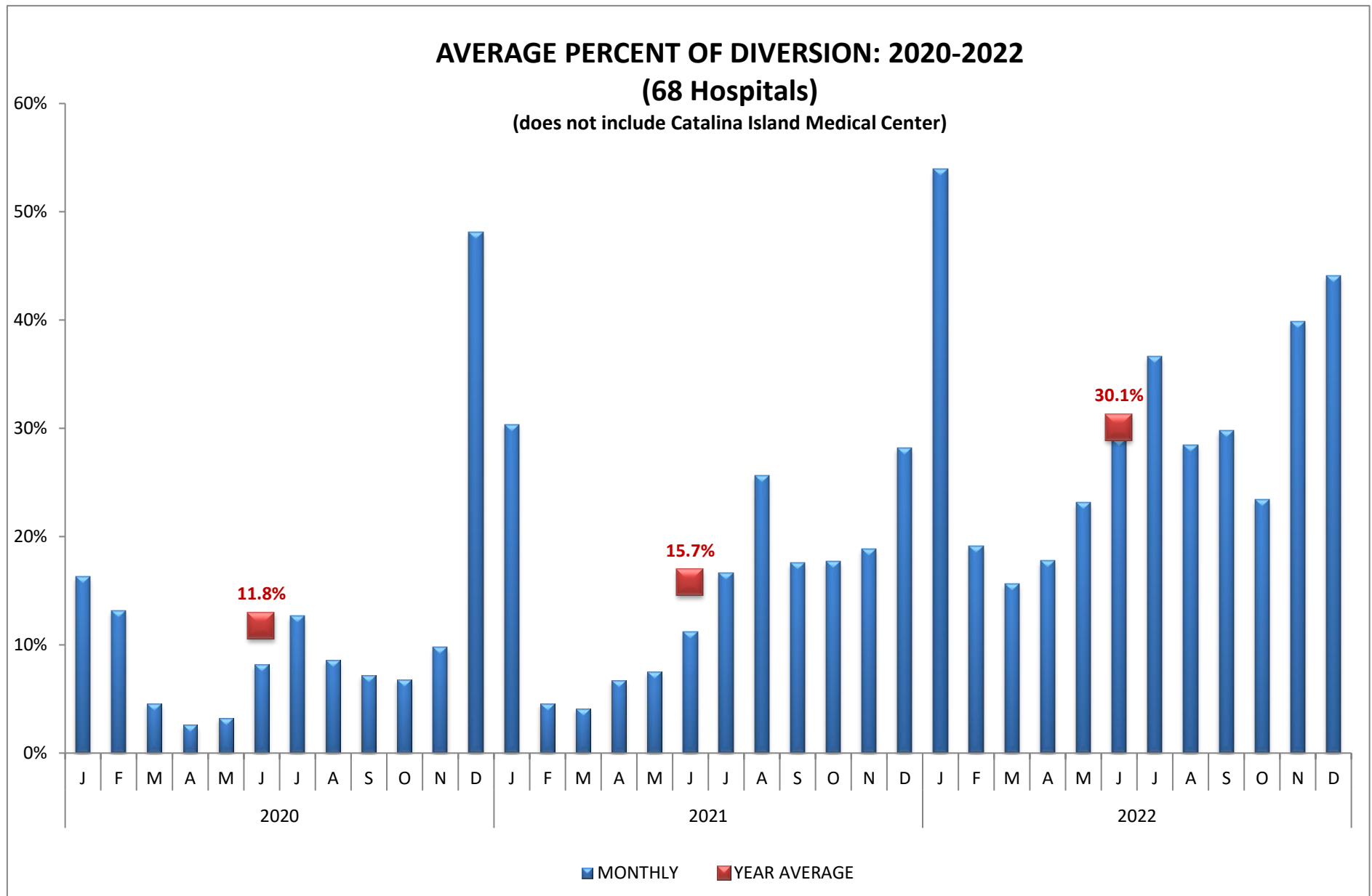


HOSPITAL DIVERSION TO 9-1-1 TRAFFIC
due TO EMERGENCY DEPARTMENT SATURATION

LOS ANGELES COUNTY 9-1-1 RECEIVING HOSPITALS (n=68 Hospitals)

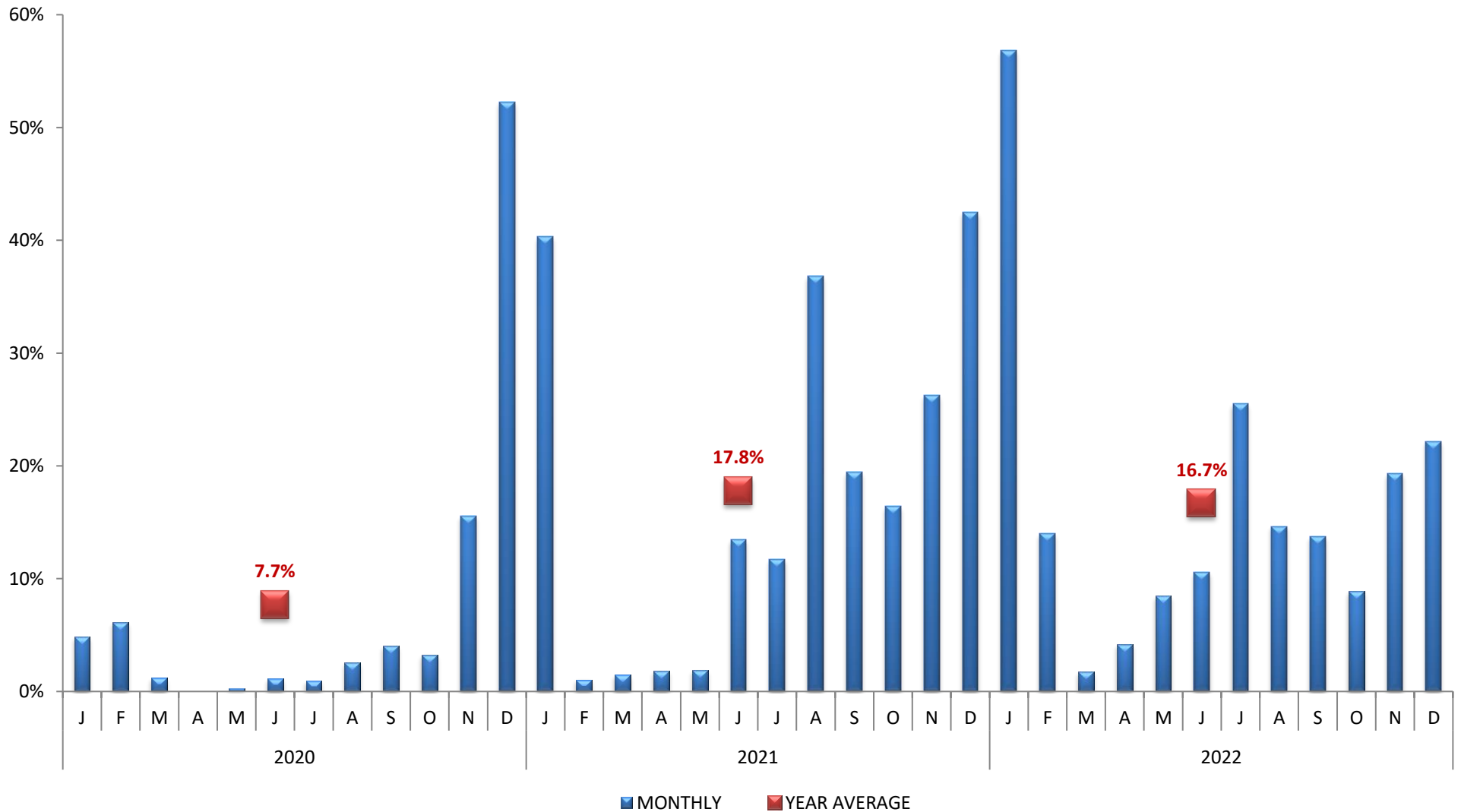


Values represent the AVERAGE incidence of ED Saturation. 100% equals the total number of hours per month.

HOSPITAL DIVERSION TO 9-1-1 TRAFFIC
due TO EMERGENCY DEPARTMENT SATURATION

ANTELOPE VALLEY - NEWHALL REGION (n=3 Hospitals)

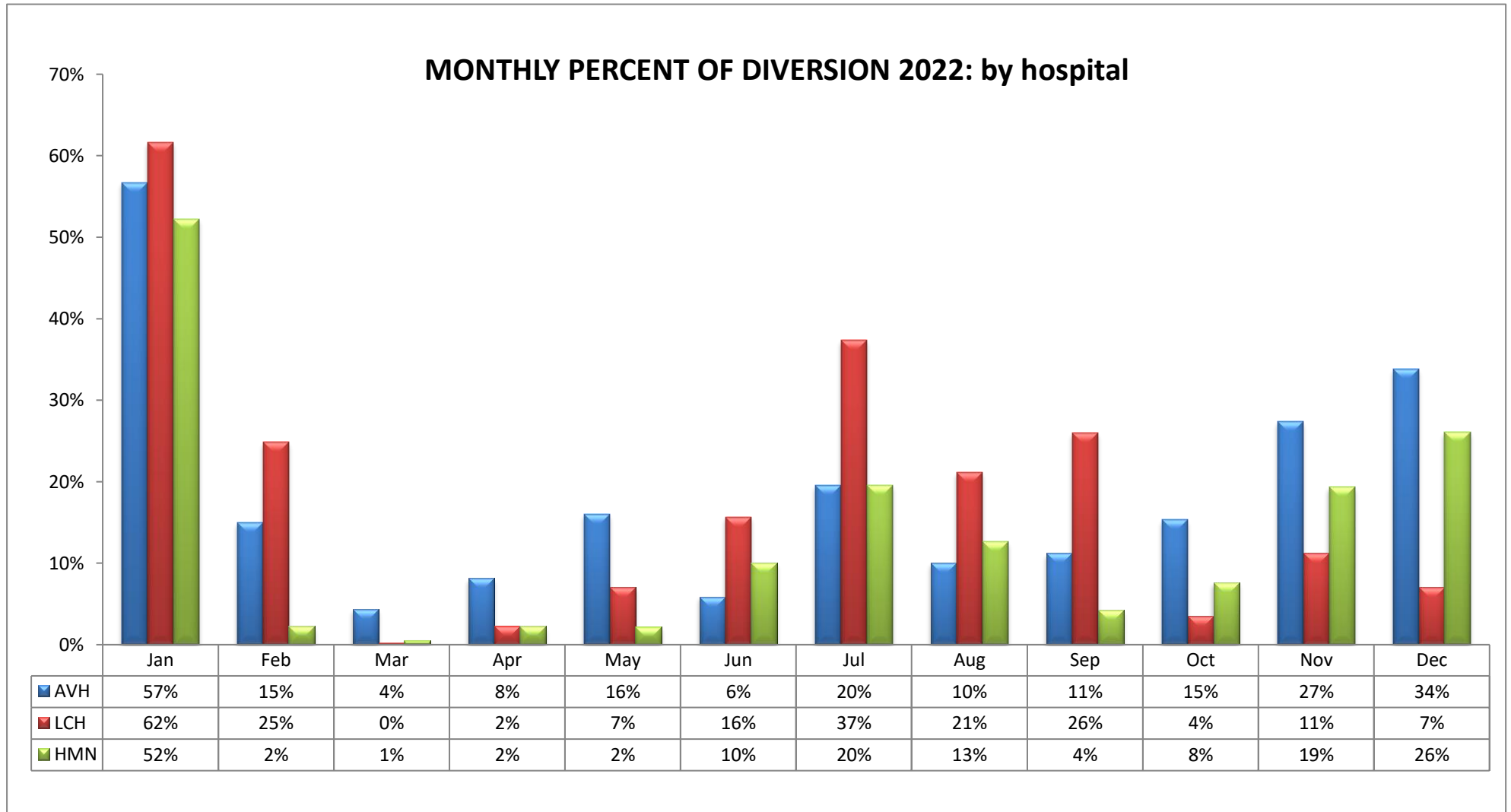
PERCENT OF DIVERSION: 2020-2022



Values represent the AVERAGE incidence of ED Saturation. 100% equals the total number of hours per month.

HOSPITAL DIVERSION TO 9-1-1 TRAFFIC
due TO EMERGENCY DEPARTMENT SATURATION

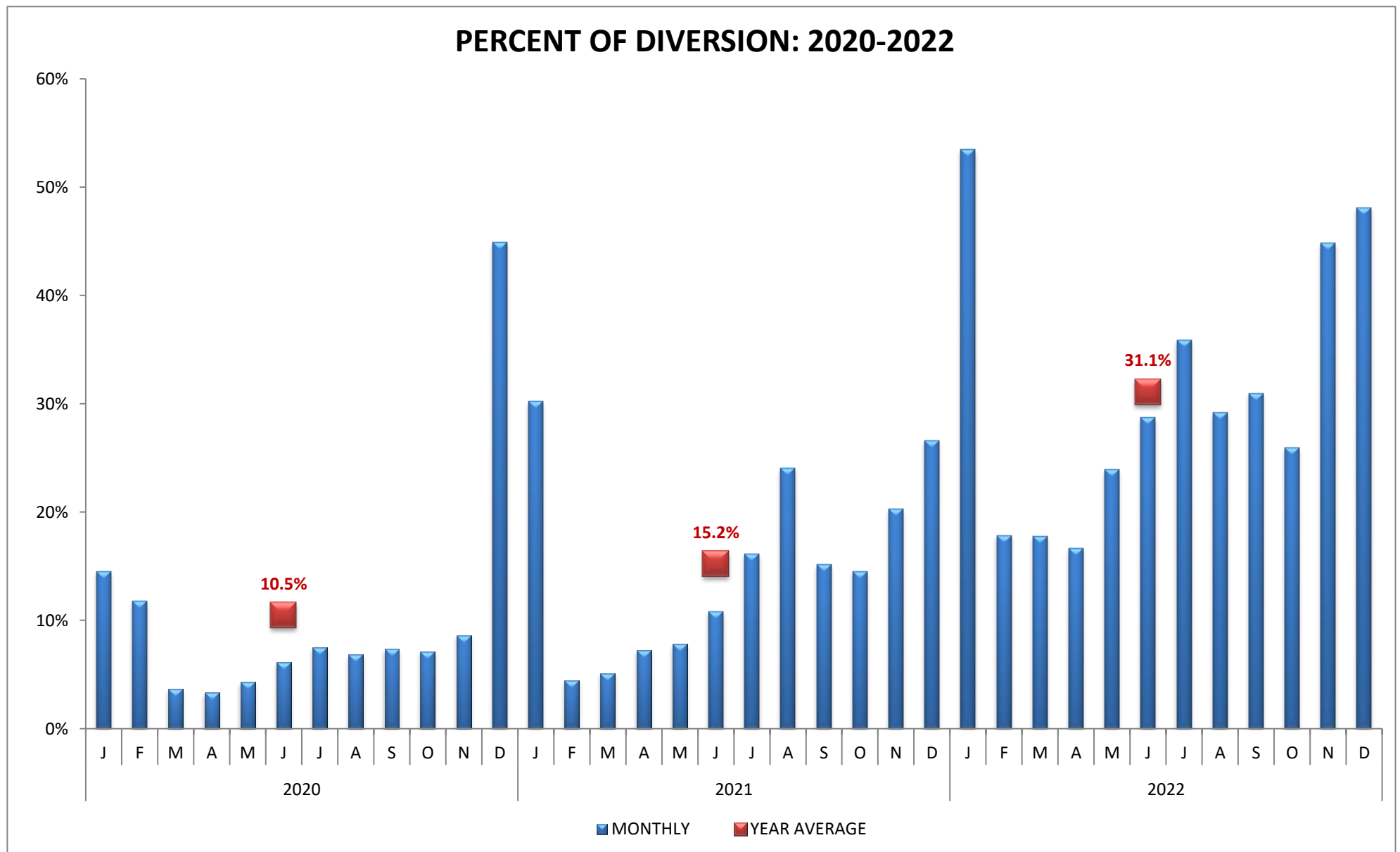
ANTELOPE VALLEY - NEWHALL REGION (n=3 Hospitals)



CODE	HOSPITAL NAME	CODE	HOSPITAL NAME	CODE	HOSPITAL NAME
AVH	Antelope Valley Hospital	LCH	Palmdale Regional Medical Center	HMN	Henry Mayo Newhall Hospital

HOSPITAL DIVERSION TO 9-1-1 TRAFFIC
due TO EMERGENCY DEPARTMENT SATURATION

SAN FERNANDO VALLEY REGION (n=16 Hospitals)

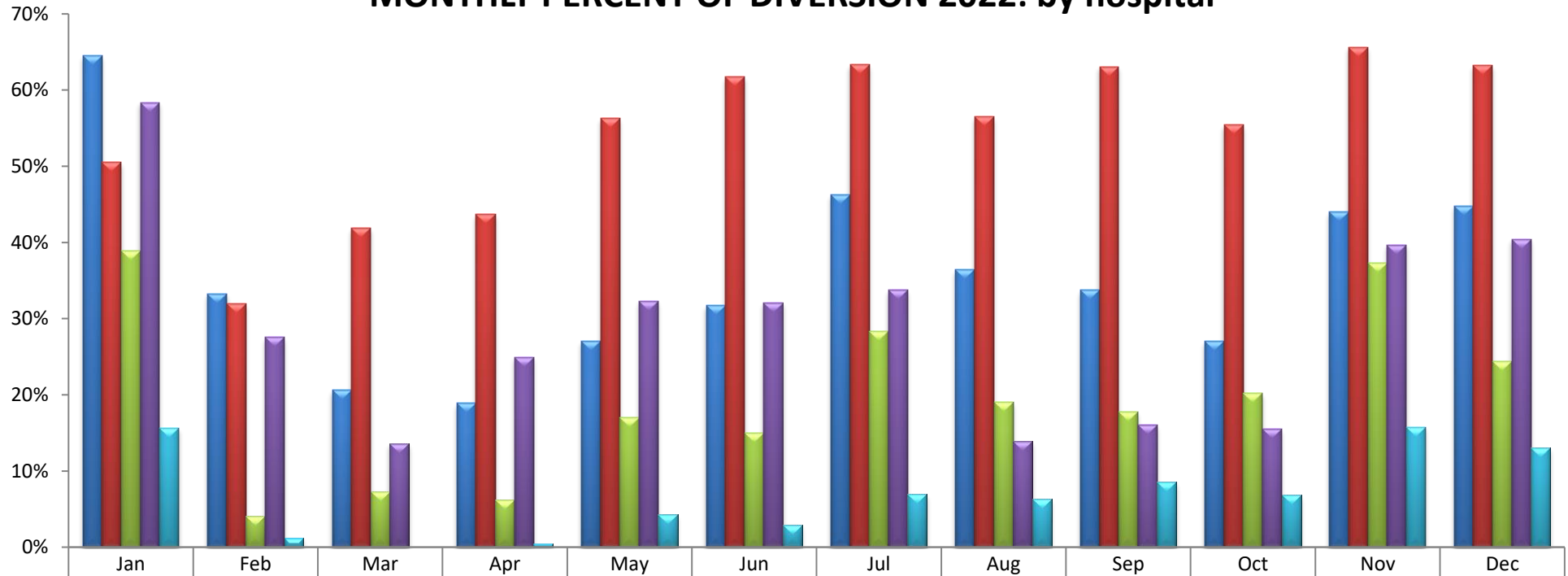


Values represent the AVERAGE incidence of ED Saturation. 100% equals the total number of hours per month.

HOSPITAL DIVERSION TO 9-1-1 TRAFFIC
due TO EMERGENCY DEPARTMENT SATURATION

SAN FERNANDO VALLEY REGION (n=16 Hospitals)

MONTHLY PERCENT OF DIVERSION 2022: by hospital



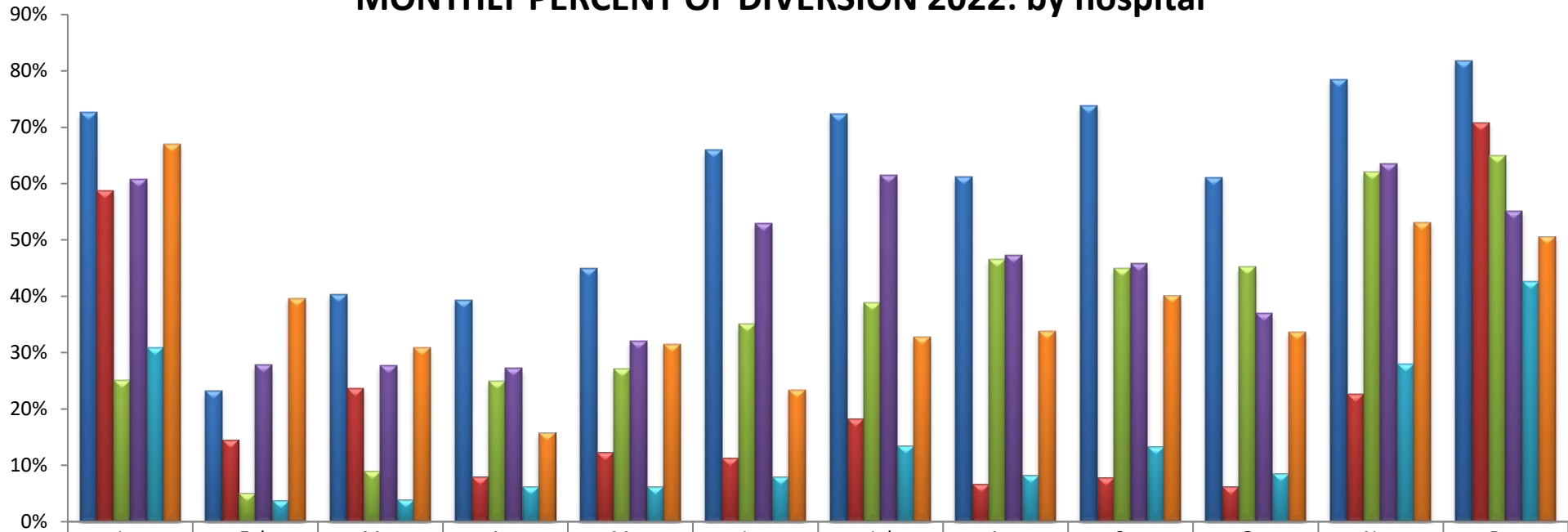
NRH	65%	33%	21%	19%	27%	32%	46%	36%	34%	27%	44%	45%
KFO	51%	32%	42%	44%	56%	62%	63%	56%	63%	55%	66%	63%
TRM	39%	4%	7%	6%	17%	15%	28%	19%	18%	20%	37%	24%
HWH	58%	28%	14%	25%	32%	32%	34%	14%	16%	16%	40%	40%
ENH	16%	1%	0%	0%	4%	3%	7%	6%	9%	7%	16%	13%

CODE	HOSPITAL NAME	CODE	HOSPITAL NAME	CODE	HOSPITAL NAME
NRH	Dignity Health Northridge Hospital M.C.	KFO	Kaiser Foundation, Woodland Hills	TRM	Cedars-Sinai Providence Tarzana Medical Center
HWH	West Hills Hospital & Medical Center	ENH	Encino Hospital Medical Center		

HOSPITAL DIVERSION TO 9-1-1 TRAFFIC
due TO EMERGENCY DEPARTMENT SATURATION

SAN FERNANDO VALLEY REGION (n=16 Hospitals)

MONTHLY PERCENT OF DIVERSION 2022: by hospital



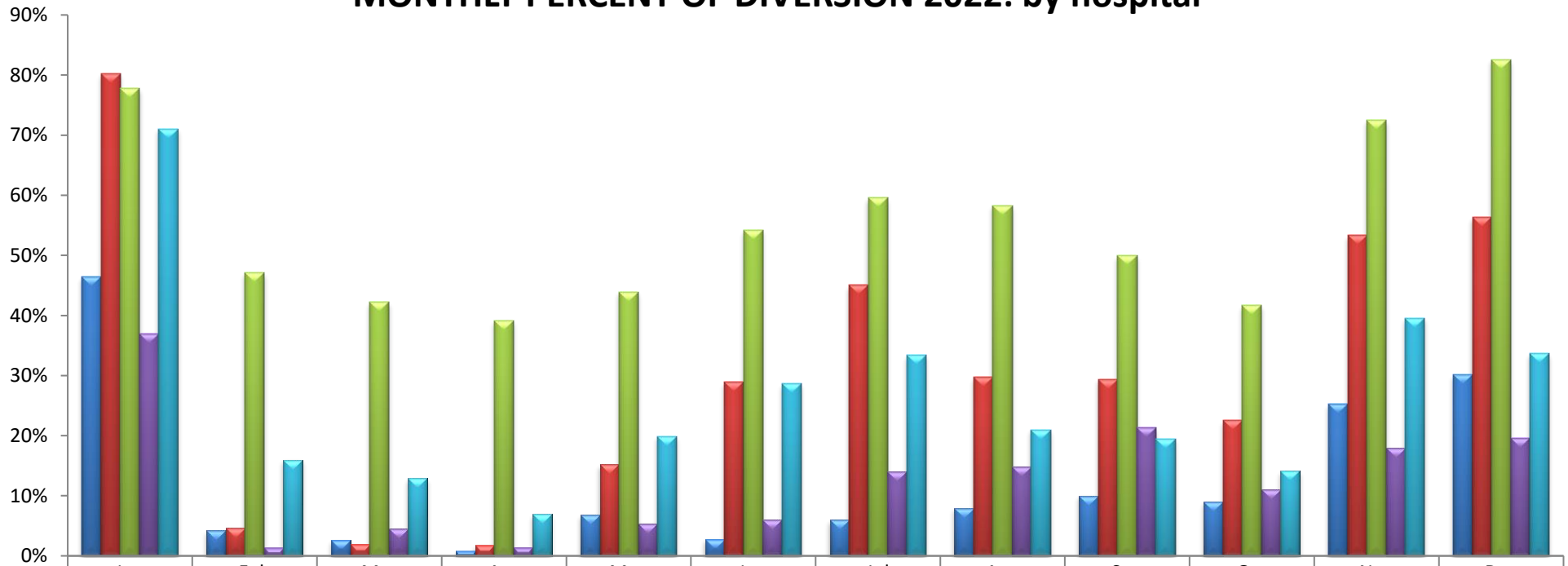
■ OVM	73%	23%	40%	39%	45%	66%	72%	61%	74%	61%	78%	82%
■ PAC	59%	14%	24%	8%	12%	11%	18%	7%	8%	6%	23%	71%
■ KFP	25%	5%	9%	25%	27%	35%	39%	47%	45%	45%	62%	65%
■ HCH	61%	28%	28%	27%	32%	53%	62%	47%	46%	37%	64%	55%
■ MCP	31%	4%	4%	6%	6%	8%	13%	8%	13%	9%	28%	43%
■ VPH	67%	40%	31%	16%	32%	23%	33%	34%	40%	34%	53%	51%

CODE	HOSPITAL NAME	CODE	HOSPITAL NAME	CODE	HOSPITAL NAME
OVM	LAC Olive View-UCLA Medical Center	PAC	Pacifica Hospital of the Valley	KFP	Kaiser Foundation Hospital, Panorama City
HCH	Providence Holy Cross Med. Center	MCP	Mission Community Hospital	VPH	Valley Presbyterian Hospital

HOSPITAL DIVERSION TO 9-1-1 TRAFFIC
due TO EMERGENCY DEPARTMENT SATURATION

SAN FERNANDO VALLEY REGION (n=16 Hospitals)

MONTHLY PERCENT OF DIVERSION 2022: by hospital



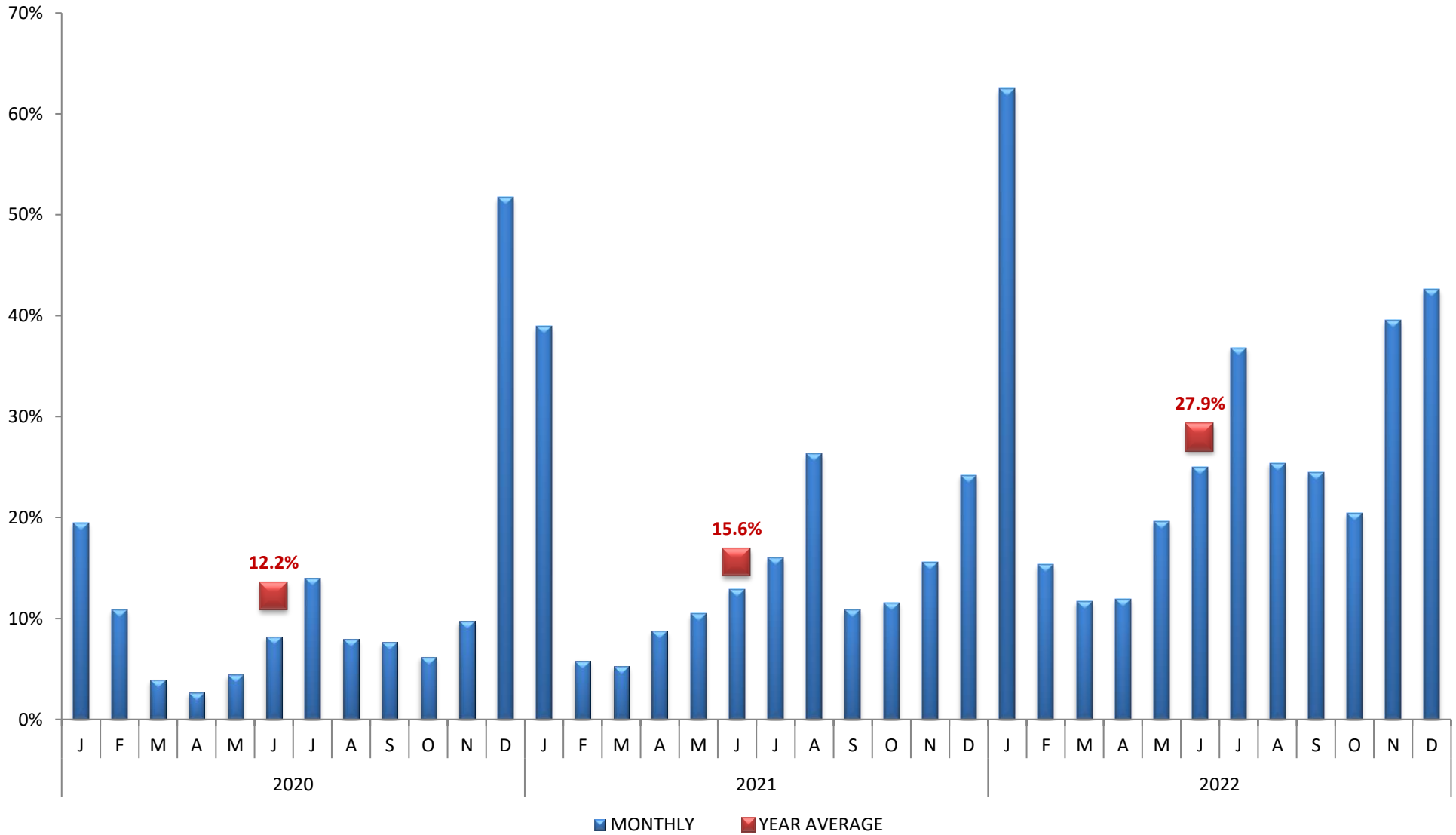
■ SOC	46%	4%	3%	1%	7%	3%	6%	8%	10%	9%	25%	30%
■ GWT	80%	5%	2%	2%	15%	29%	45%	30%	29%	23%	53%	56%
■ VHH	78%	47%	42%	39%	44%	54%	60%	58%	50%	42%	72%	83%
■ SJS	37%	1%	5%	1%	5%	6%	14%	15%	21%	11%	18%	20%
■ GMH	71%	16%	13%	7%	20%	29%	33%	21%	20%	14%	40%	34%

CODE	HOSPITAL NAME	CODE	HOSPITAL NAME	CODE	HOSPITAL NAME
SOC	Sherman Oaks Hospital	GWT	Adventist Health Glendale	VHH	USC Verdugo Hills Hospital
SJS	Providence St. Joseph Med. Center	GMH	Dignity Health Glendale Memorial Hospital		

HOSPITAL DIVERSION TO 9-1-1 TRAFFIC
due TO EMERGENCY DEPARTMENT SATURATION

SAN GABRIEL VALLEY REGION (n=13 Hospitals)

PERCENT OF DIVERSION: 2020-2022

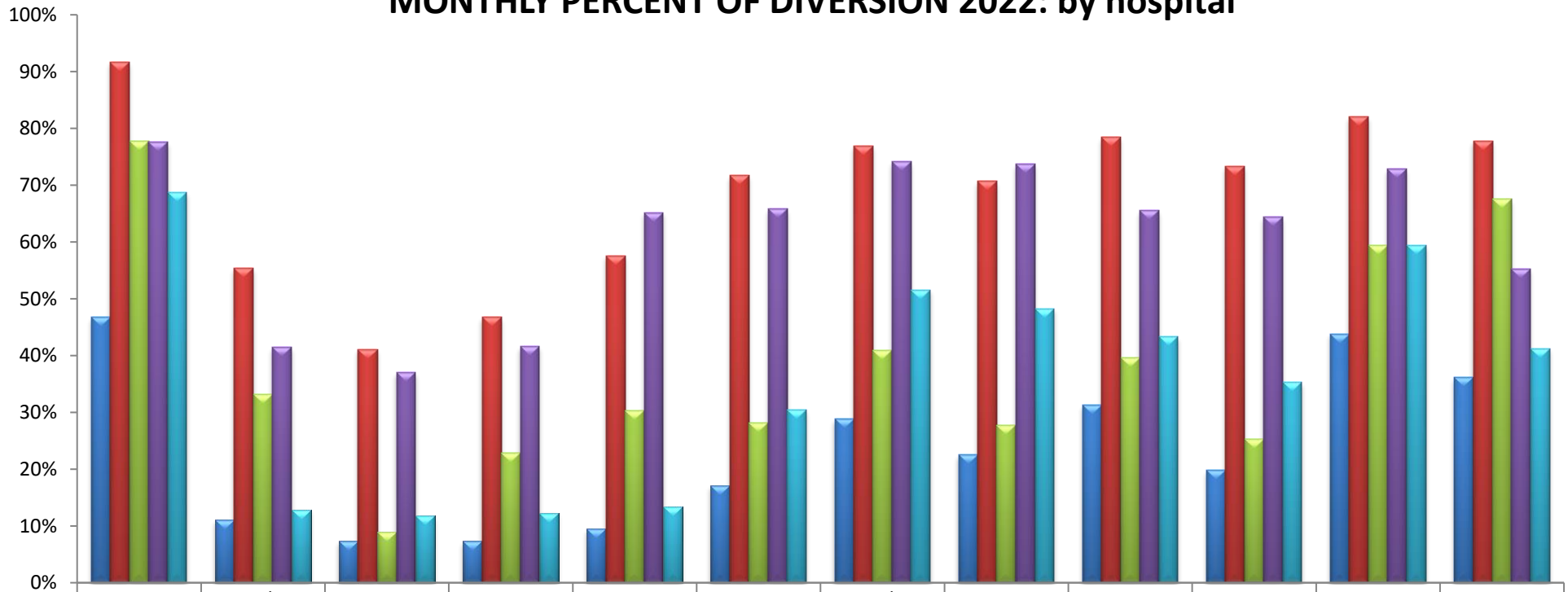


Values represent the AVERAGE incidence of ED Saturation. 100% equals the total number of hours per month.

HOSPITAL DIVERSION TO 9-1-1 TRAFFIC
due TO EMERGENCY DEPARTMENT SATURATION

SAN GABRIEL VALLEY REGION (n=13 Hospitals)

MONTHLY PERCENT OF DIVERSION 2022: by hospital

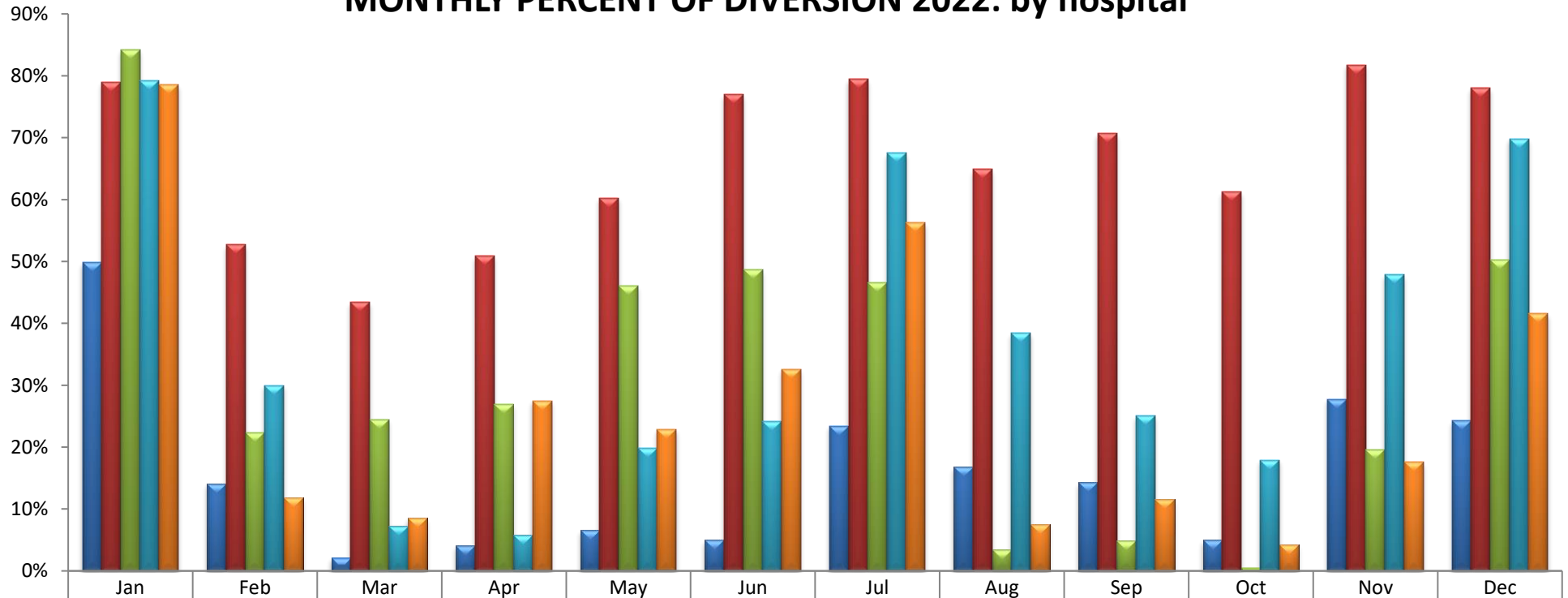


ACH	Alhambra Hospital Medical Center	AMH	USC Arcadia Hospital	GEM	Greater El Monte Community Hospital
HMH	Huntington Hospital	SGC	San Gabriel Valley Medical Center		

HOSPITAL DIVERSION TO 9-1-1 TRAFFIC
due TO EMERGENCY DEPARTMENT SATURATION

SAN GABRIEL VALLEY REGION (n=13 Hospitals)

MONTHLY PERCENT OF DIVERSION 2022: by hospital

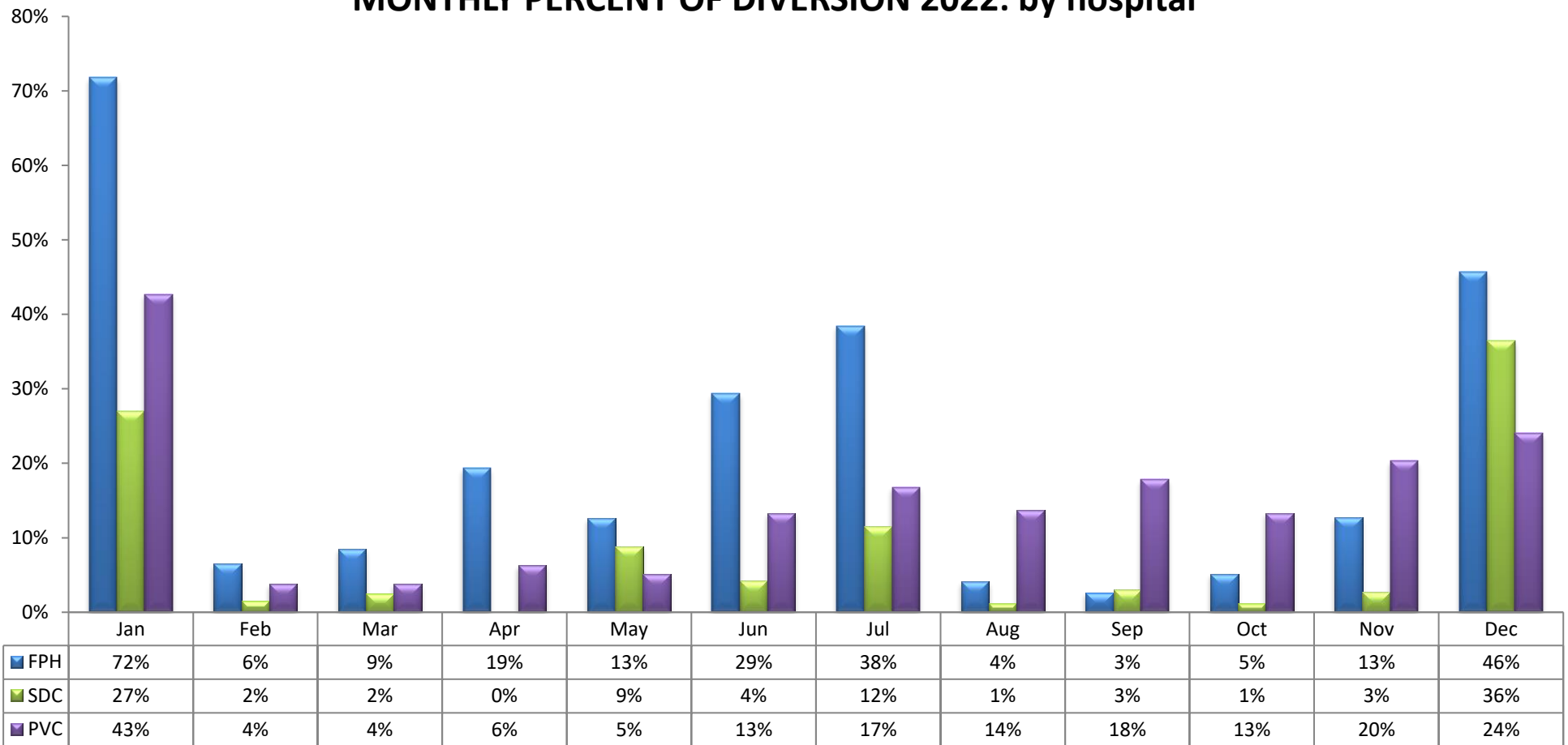


CODE	HOSPITAL NAME	CODE	HOSPITAL NAME	CODE	HOSPITAL NAME
MPH	Monterey Park Hospital	KFA	Kaiser Foundation, Baldwin Park	ICH	Emanate Health, Intercommunity Hospital
GAR	Garfield Medical Center	QVH	Emanate Health, Queen of the Valley Hospital		

HOSPITAL DIVERSION TO 9-1-1 TRAFFIC
due TO EMERGENCY DEPARTMENT SATURATION

SAN GABRIEL VALLEY REGION (n=13 Hospitals)

MONTHLY PERCENT OF DIVERSION 2022: by hospital

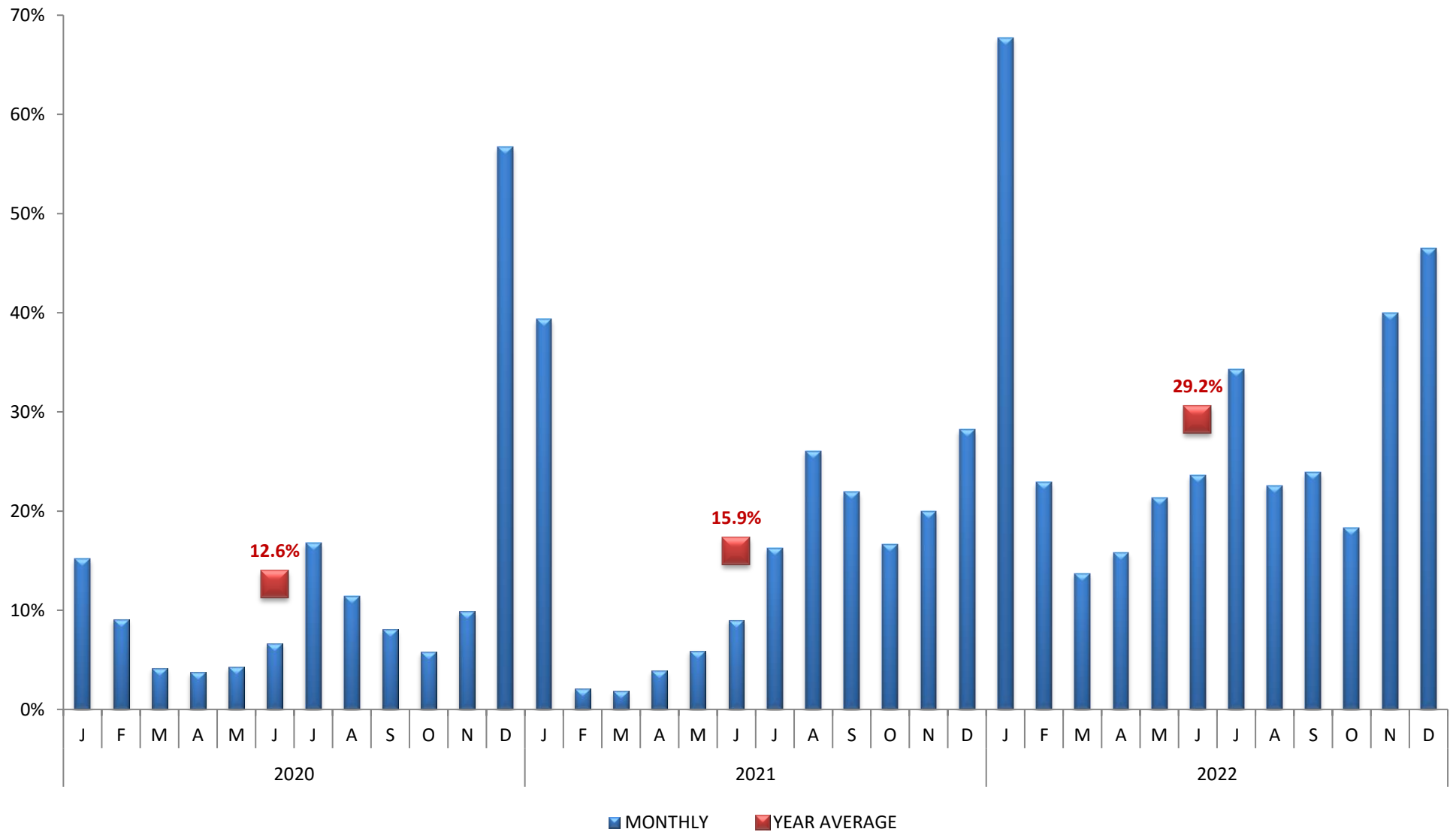


CODE	HOSPITAL NAME	CODE	HOSPITAL NAME
FPH	Emanate Health Foothill Presbyterian Hospital	SDC	San Dimas Community Hospital
PVC	Pomona Valley Hospital Medical Center		

HOSPITAL DIVERSION TO 9-1-1 TRAFFIC
due TO EMERGENCY DEPARTMENT SATURATION

EAST REGION (n=8 Hospitals)

PERCENT OF DIVERSION: 2020-2022

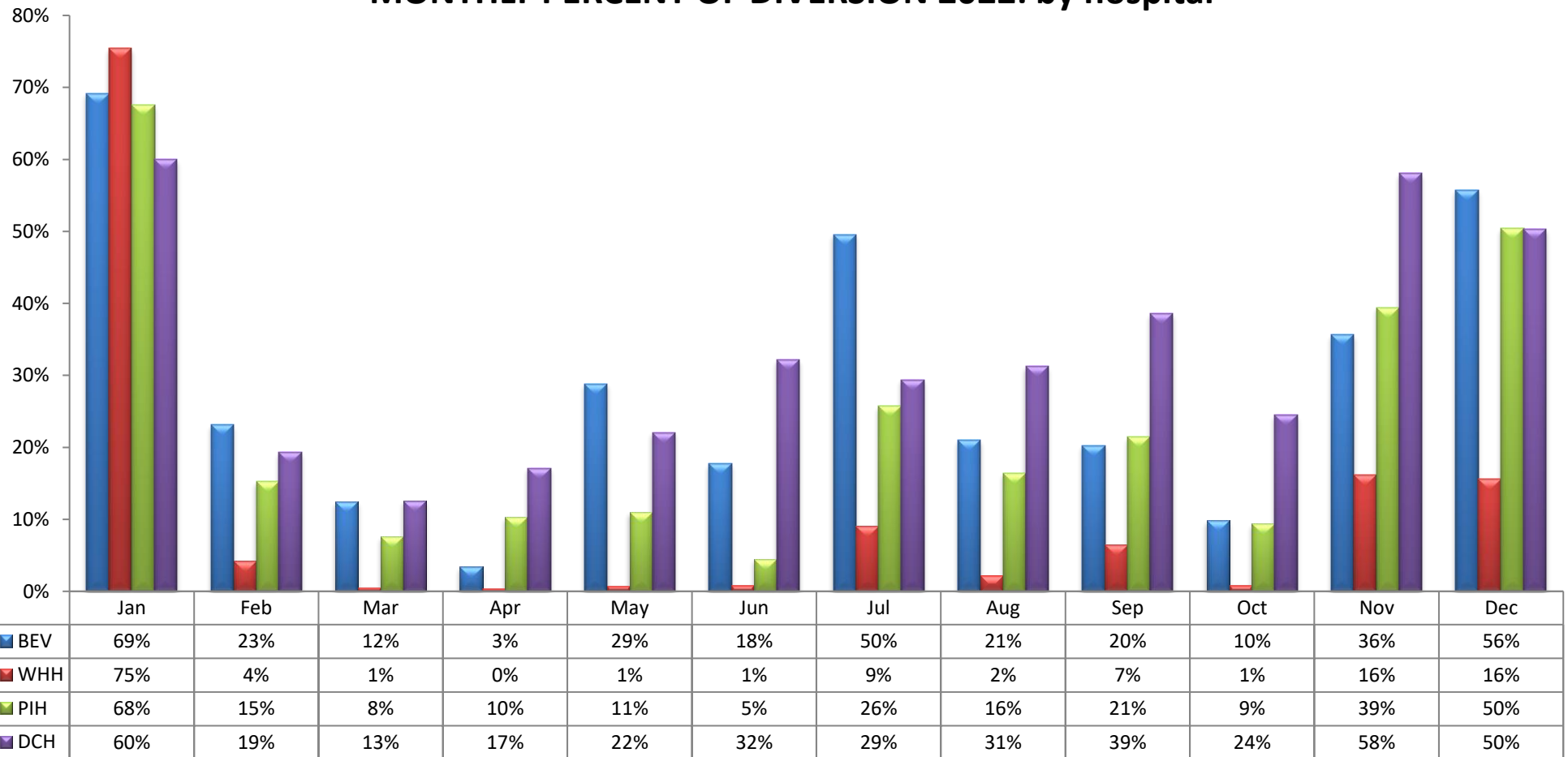


Values represent the AVERAGE incidence of ED Saturation. 100% equals the total number of hours per month.

HOSPITAL DIVERSION TO 9-1-1 TRAFFIC
due TO EMERGENCY DEPARTMENT SATURATION

EAST REGION (n=8 Hospitals)

MONTHLY PERCENT OF DIVERSION 2022: by hospital

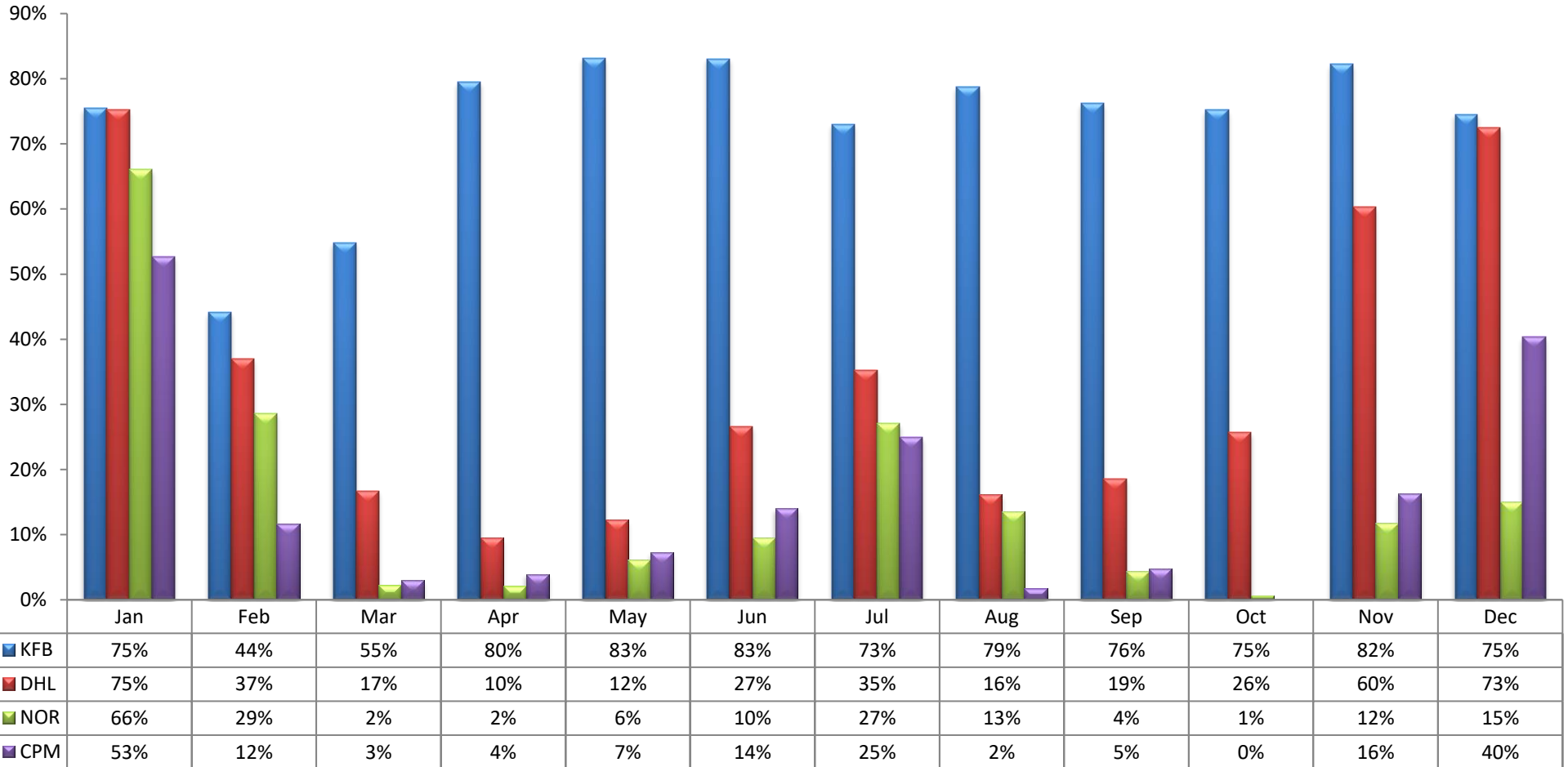


CODE	HOSPITAL NAME	CODE	HOSPITAL NAME
BEV	Beverly Hospital	WHH	Whittier Hospital Medical Center
PIH	PIH Health Whittier Hospital	DCH	PIH Health Downey Hospital

HOSPITAL DIVERSION TO 9-1-1 TRAFFIC
due TO EMERGENCY DEPARTMENT SATURATION

EAST REGION (n=8 Hospitals)

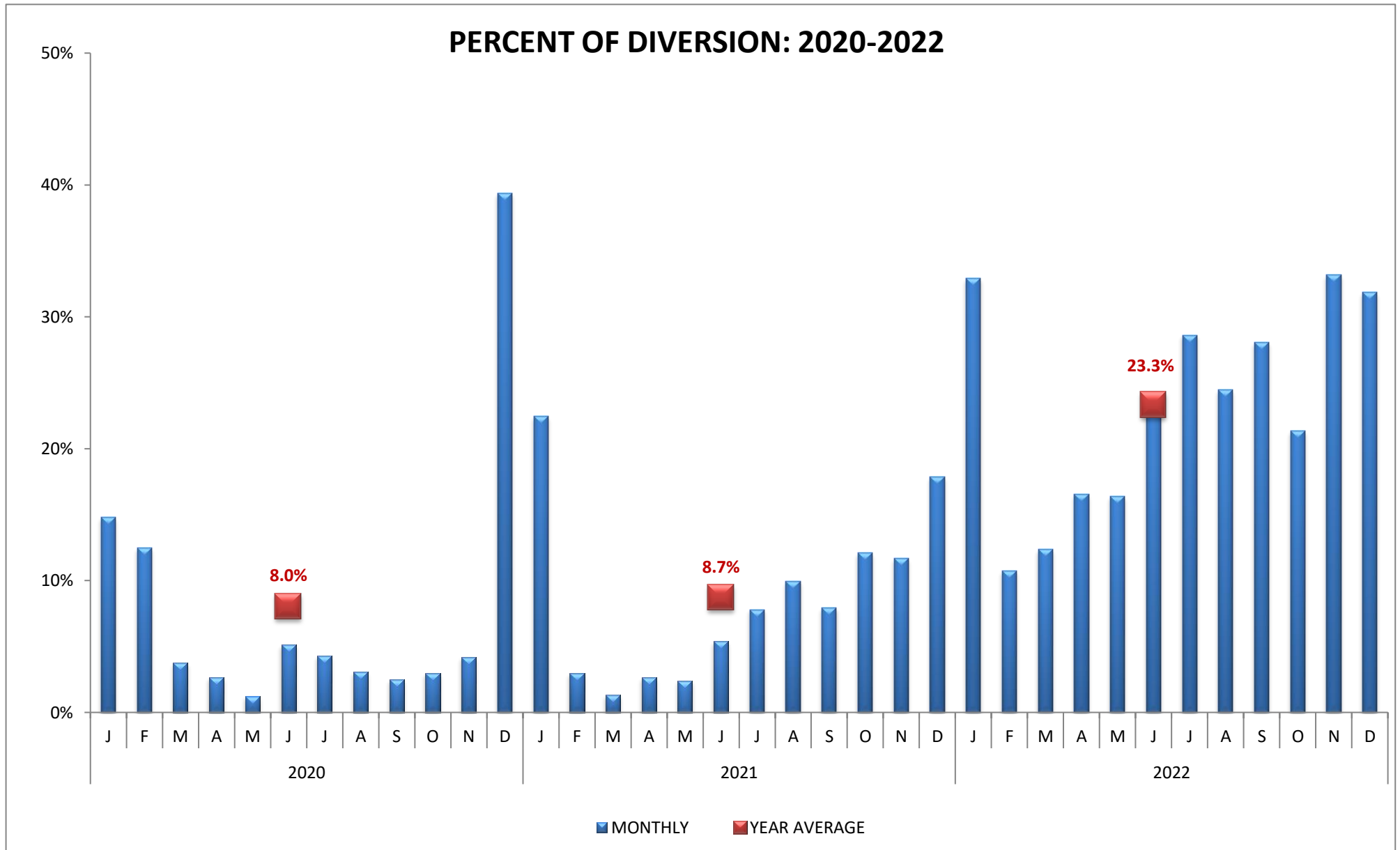
MONTHLY PERCENT OF DIVERSION 2022: by hospital



CODE	HOSPITAL NAME	CODE	HOSPITAL NAME
KFB	Kaiser Foundation, Downey	DHL	Lakewood Regional Medical Center
NOR	LA Community Hospital at Norwalk	CPM	Coast Plaza Hospital

HOSPITAL DIVERSION TO 9-1-1 TRAFFIC
due TO EMERGENCY DEPARTMENT SATURATION

METRO REGION (n=10 Hospitals)

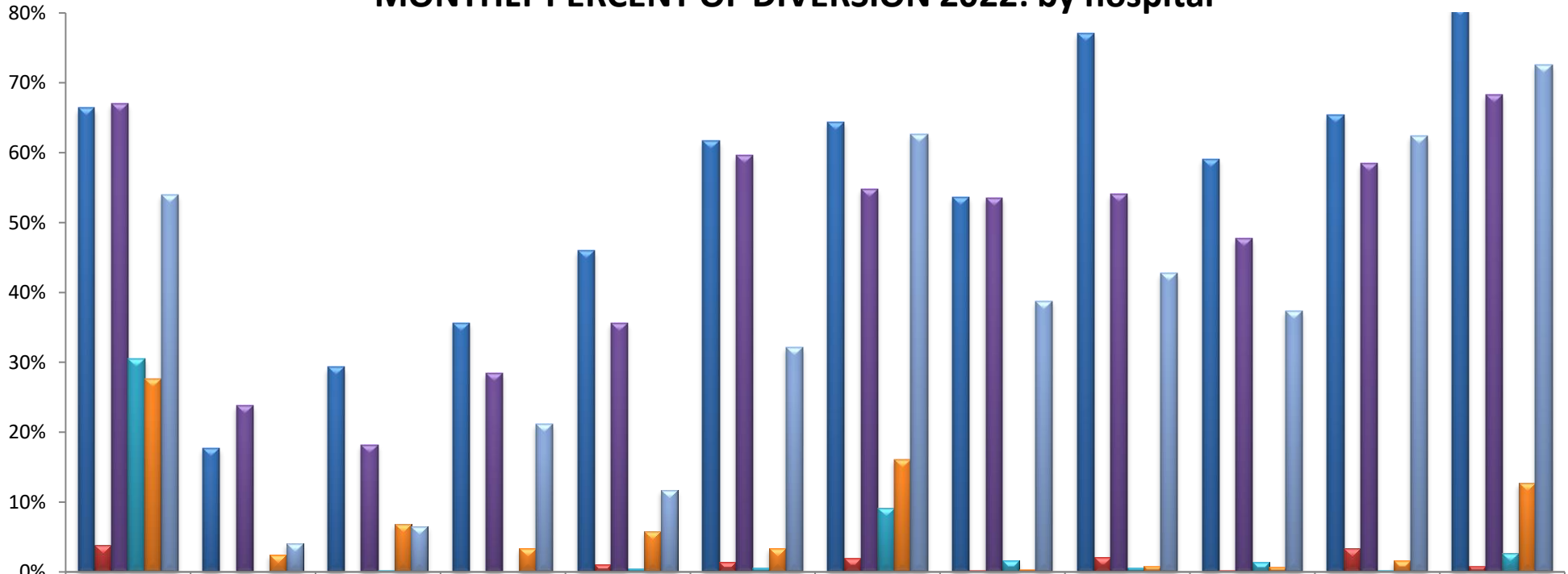


Values represent the AVERAGE incidence of ED Saturation. 100% equals the total number of hours per month.

HOSPITAL DIVERSION TO 9-1-1 TRAFFIC
due TO EMERGENCY DEPARTMENT SATURATION

METRO REGION (n=10 Hospitals)

MONTHLY PERCENT OF DIVERSION 2022: by hospital



CODE	HOSPITAL NAME	CODE	HOSPITAL NAME
CAL**	Dignity Health California Hospital M.C.	WMH***	Adventist Health White Memorial
GSH**	PIH Health Good Samaritan Hospital	ELA***	East Los Angeles Doctors Hospital
USC	LAC+USC Medical Center	CHP***	Community Hospital of Huntington Park

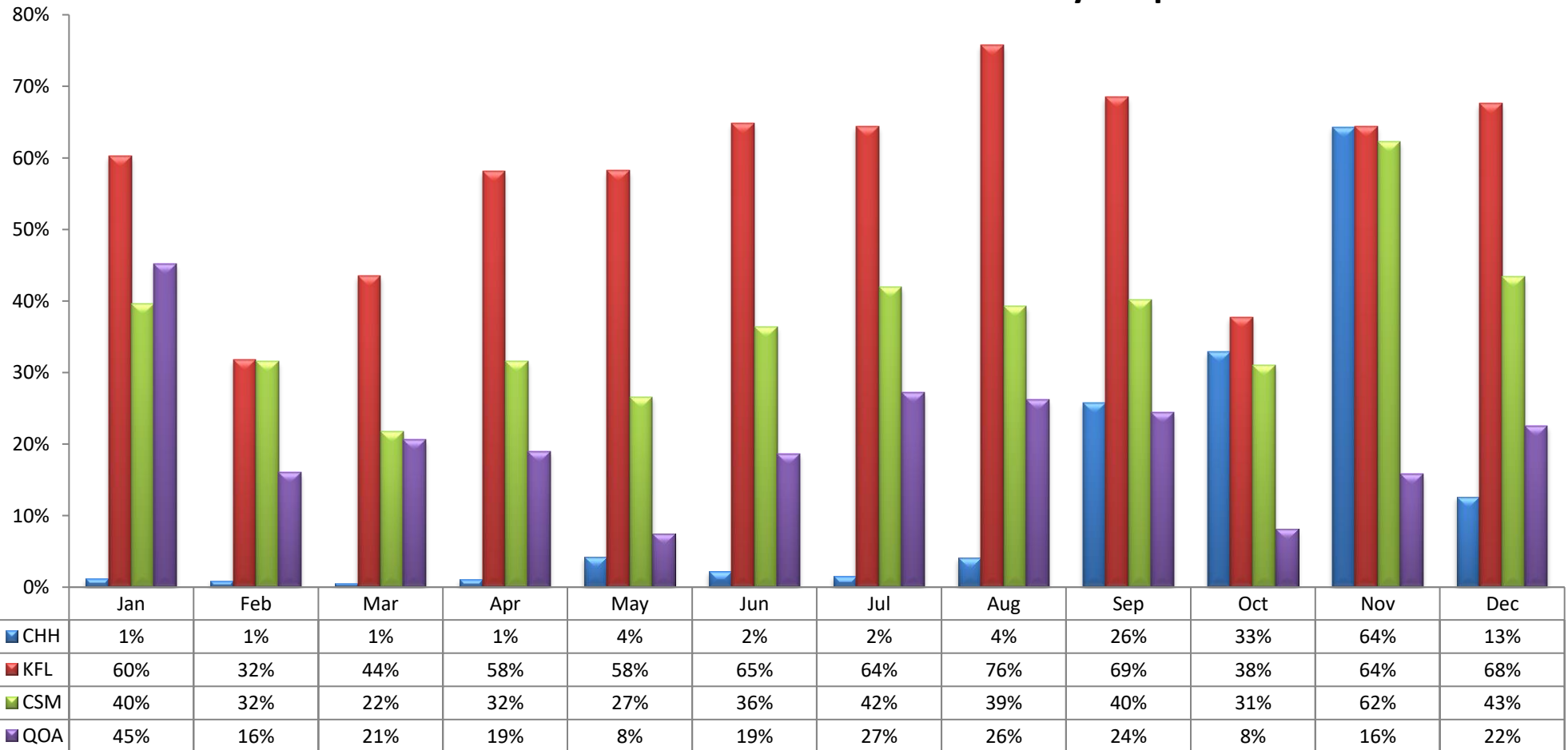
** Combined Service Area - may divert to each other

*** Combined Service Area - ELA & CHP may divert to WMH

HOSPITAL DIVERSION TO 9-1-1 TRAFFIC
due TO EMERGENCY DEPARTMENT SATURATION

METRO REGION (n=10 Hospitals)

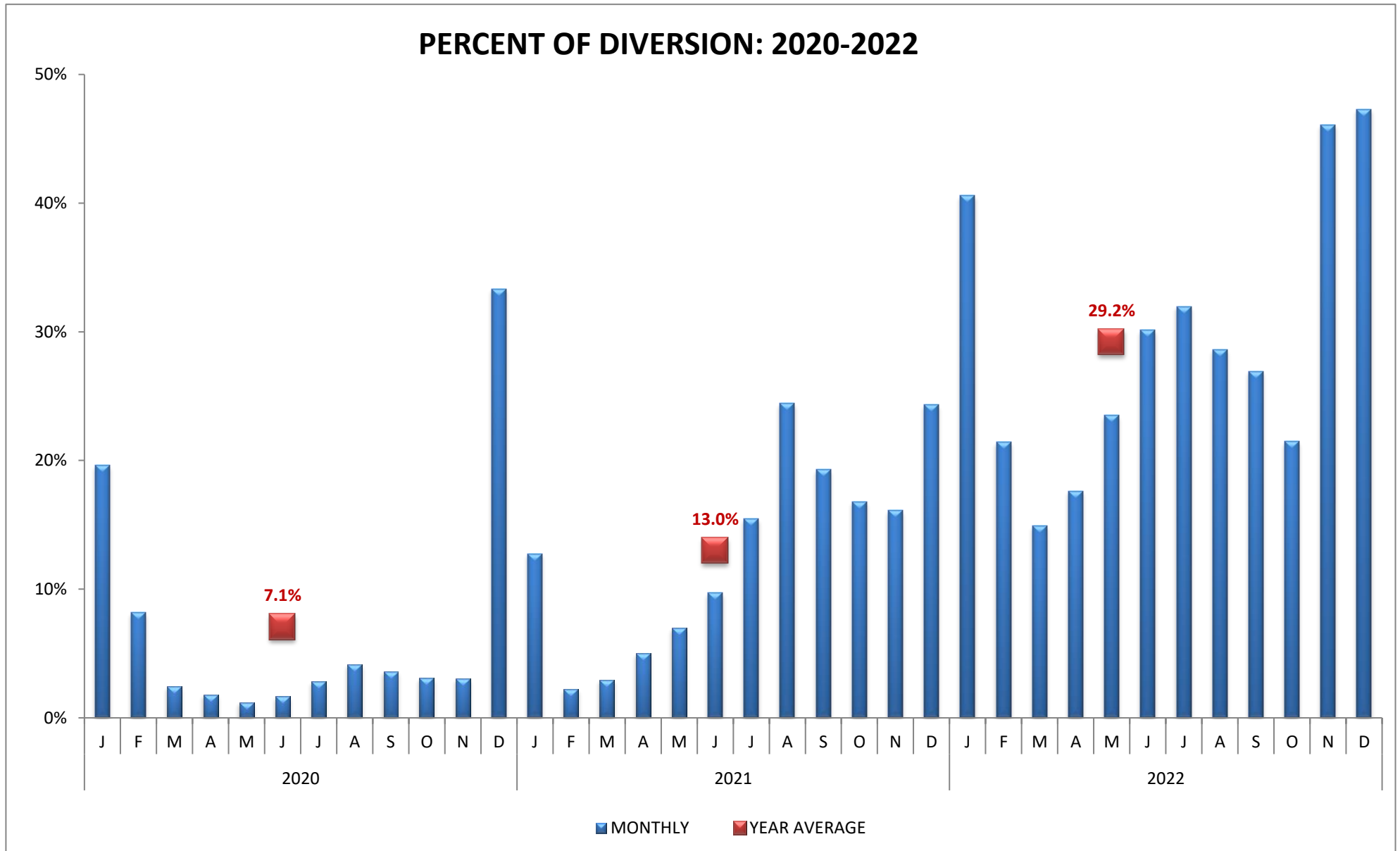
MONTHLY PERCENT OF DIVERSION 2022: by hospital



CODE	HOSPITAL NAME	CODE	HOSPITAL NAME	CODE	HOSPITAL NAME
CHH	Children's Hospital Los Angeles	KFL	Kaiser Foundation, Los Angeles	CSM	Cedars Sinai Medical Center
QOA	Hollywood Presbyterian Medical Center				

HOSPITAL DIVERSION TO 9-1-1 TRAFFIC
due TO EMERGENCY DEPARTMENT SATURATION

WEST REGION (n=6 Hospitals)

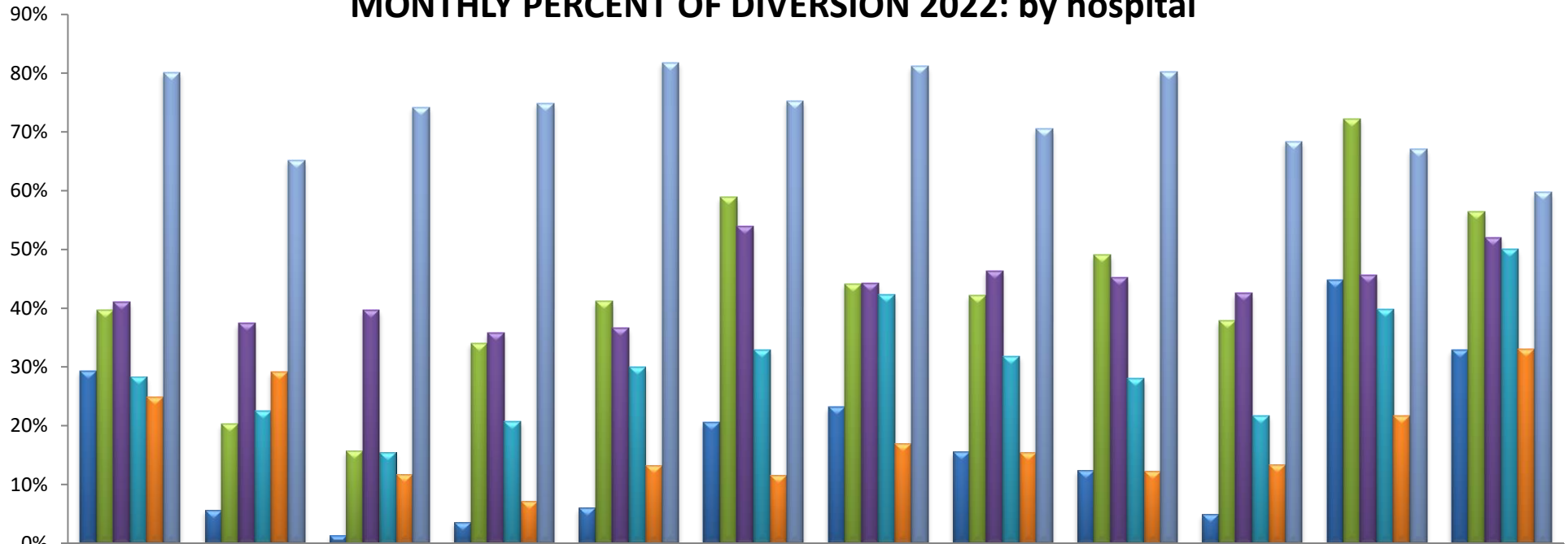


Values represent the AVERAGE incidence of ED Saturation. 100% equals the total number of hours per month.

HOSPITAL DIVERSION TO 9-1-1 TRAFFIC
due TO EMERGENCY DEPARTMENT SATURATION

WEST REGION (n=6 Hospitals)

MONTHLY PERCENT OF DIVERSION 2022: by hospital

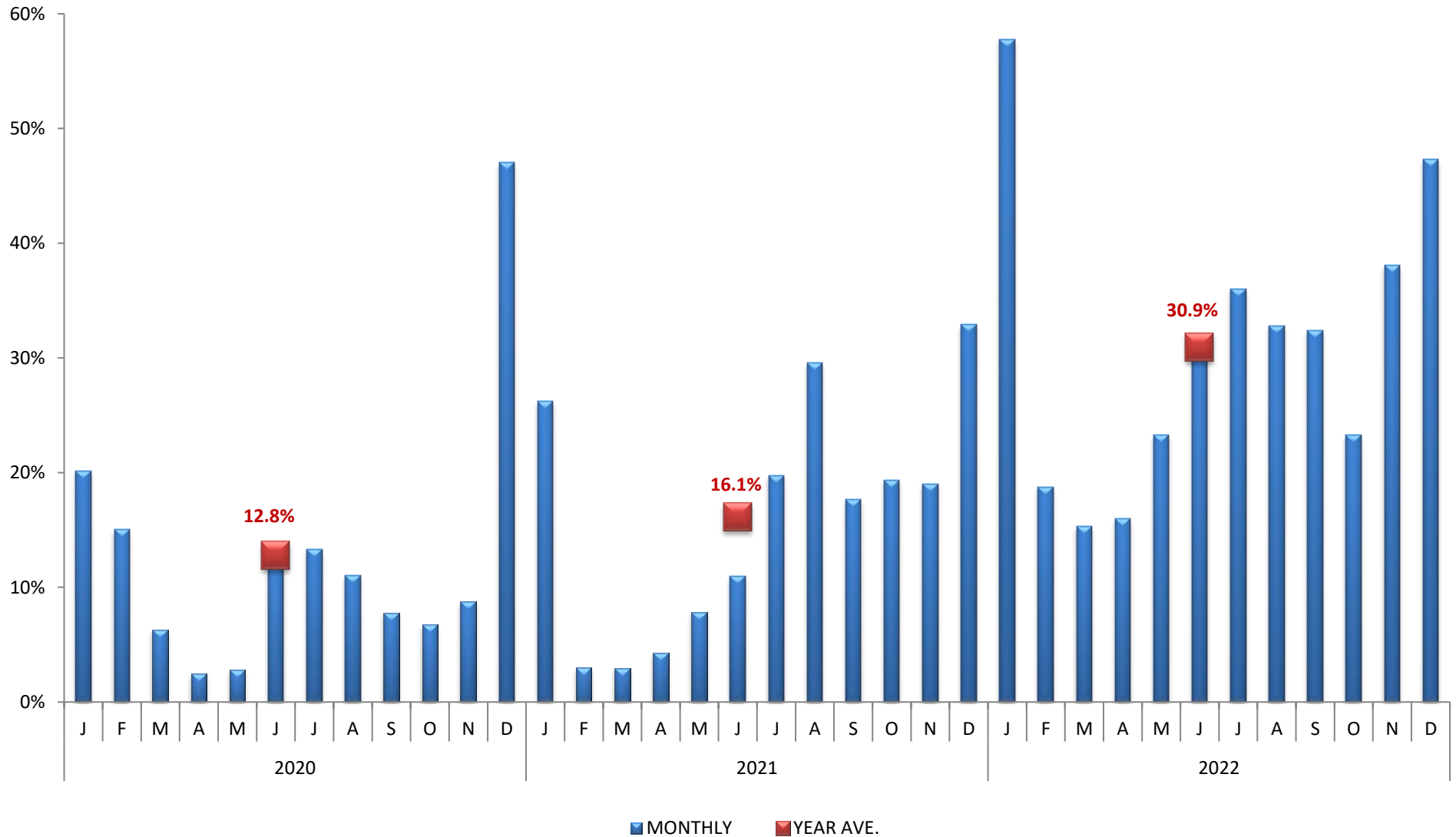


CODE	HOSPITAL NAME	CODE	HOSPITAL NAME	CODE	HOSPITAL NAME
BMC	Southern California Hospital at Culver City	KFW	Kaiser Foundation, West Los Angeles	SMH	Santa Monica-UCLA Medical Center
DFM	Cedars-Sinai Marina Del Rey Hospital	SJH	Providence St. John's Health Center	UCL	Ronald Reagan UCLA Medical Center

HOSPITAL DIVERSION TO 9-1-1 TRAFFIC
due TO EMERGENCY DEPARTMENT SATURATION

SOUTH REGION (n=12 Hospitals)

PERCENT OF DIVERSION: 2020-2022

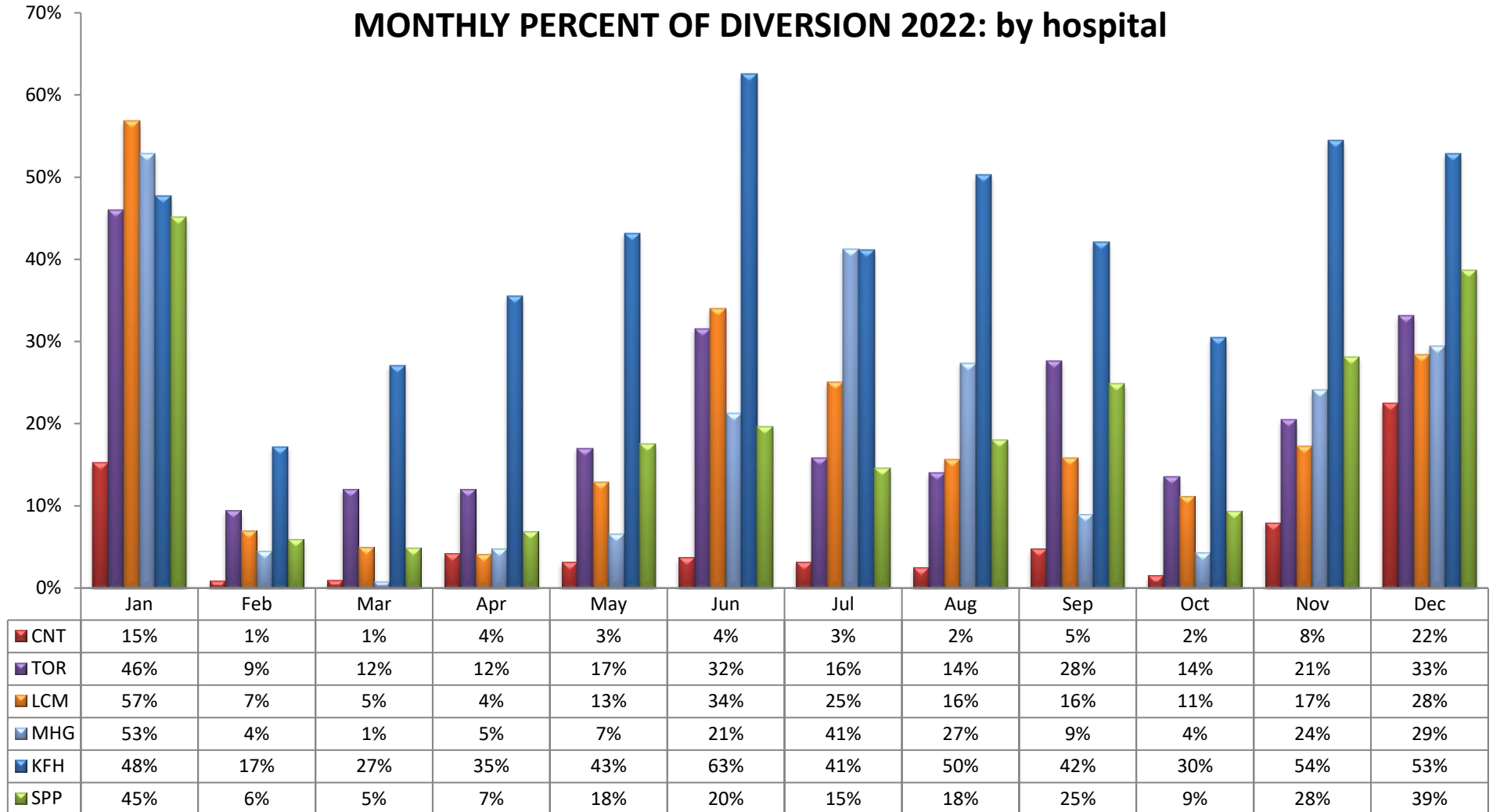


Values represent the AVERAGE incidence of ED Saturation. 100% equals the total number of hours per month.

HOSPITAL DIVERSION TO 9-1-1 TRAFFIC
due TO EMERGENCY DEPARTMENT SATURATION

SOUTH REGION (n=12 Hospitals)

MONTHLY PERCENT OF DIVERSION 2022: by hospital



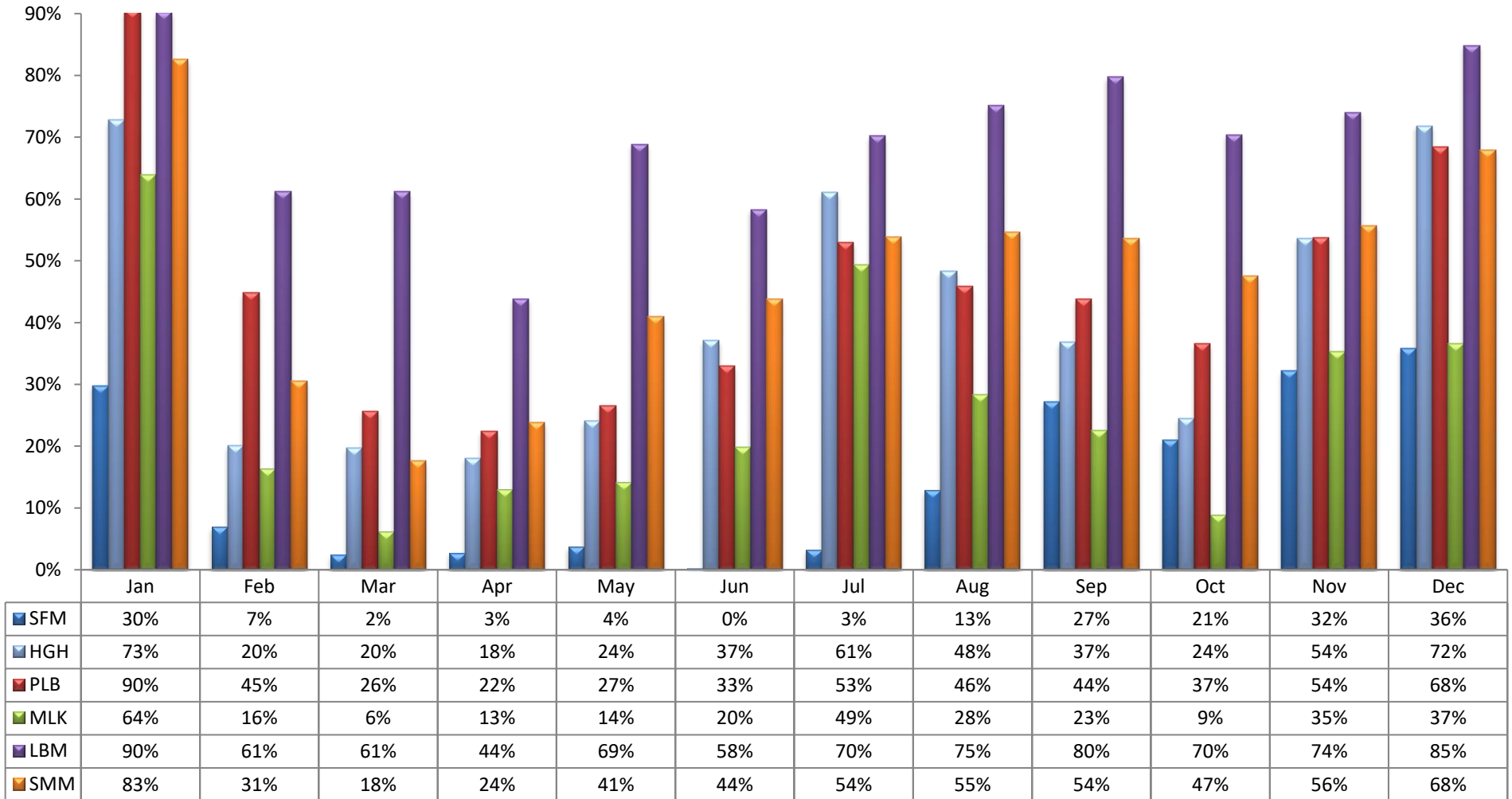
CODE	HOSPITAL NAME	CODE	HOSPITAL NAME	CODE	HOSPITAL NAME
CNT*	Centinela Hospital Medical Center	TOR	Torrance Memorial Medical Center	LCM	Providence Little Company of Mary Medical Center-Torrance
MHG	Memorial Hospital of Gardena	KFH	Kaiser Foundation - South Bay	SPP	Providence Little Company of Mary Medical Center-San Pedro

* Service Area Hospital

HOSPITAL DIVERSION TO 9-1-1 TRAFFIC
due TO EMERGENCY DEPARTMENT SATURATION

SOUTH REGION (n=12 Hospitals)

MONTHLY PERCENT OF DIVERSION 2022: by hospital



CODE	HOSPITAL NAME	CODE	HOSPITAL NAME	CODE	HOSPITAL NAME
SFM	St. Francis Medical Center	HGH	LAC Harbor-UCLA Medical Center	PLB	College Medical Center
MLK	MLK Community Hospital	LBM	MemorialCare Long Beach Medical Center	SMM	Dignity Health-St. Mary Medical Center

Note: Catalina Island Medical Center = 0% diversion