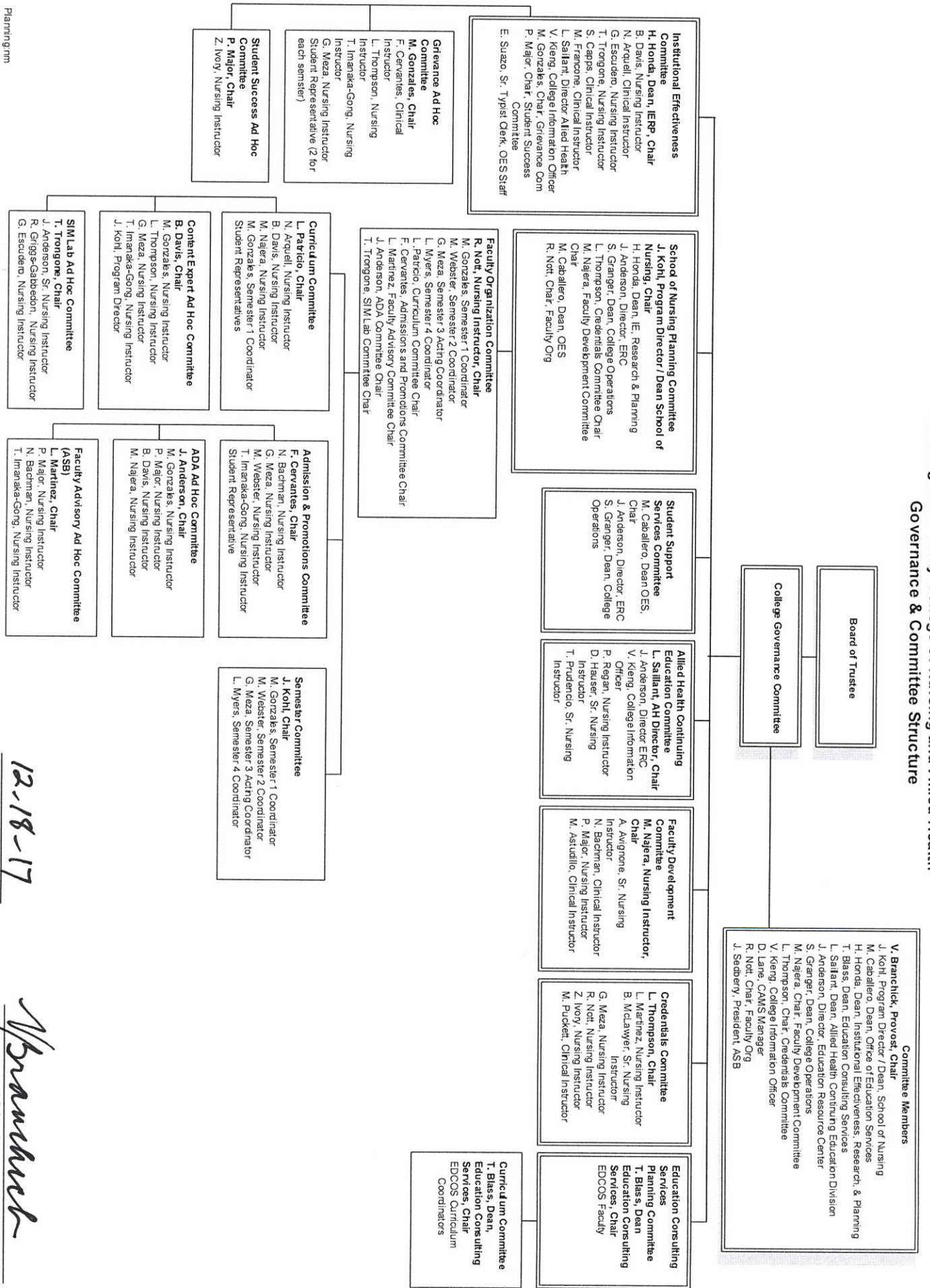


Los Angeles County College of Nursing and Allied Health Governance & Committee Structure



Committee Members

- V. Branchick, Provost, Chair
- J. Kohl, Program Director / Dean, School of Nursing
- M. Caballero, Dean, Office of Education Services
- H. Honda, Dean, Institutional Effectiveness, Research, & Planning
- T. Bias, Dean, Education Consulting Services
- L. Salant, Dean, Allied Health Continuing Education Division
- J. Anderson, Director, Education Resource Center
- S. Granger, Dean, College Operations
- M. Najera, Chair, Faculty Development Committee
- L. Thompson, Chair, Credentials Committee
- V. Kieng, College Information Officer
- D. Lane, CAMS Manager
- R. Nott, Chair, Faculty Org
- J. Seabery, President, ASB

Date 12-18-17


 Vivian Branchick
 Provost / Administrator