



County of Los Angeles  
**Anti-Racism,  
Diversity,  
& Inclusion**

CREATING AN LA COUNTY  
WHERE WE ALL THRIVE

# Prevention Services Task Force Meeting

June 30, 2023





ITEM 2

# MEETING DISCLOSURES





# INTERPRETACIÓN EN ESPAÑOL

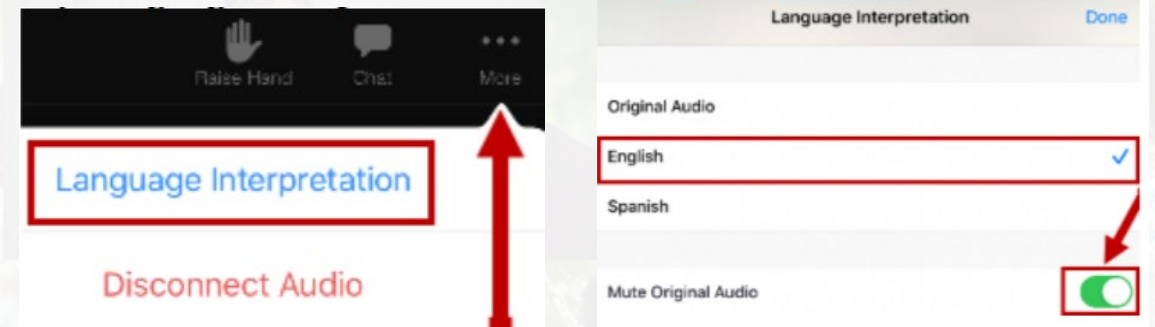
Para interpretación en español, haga clic en el ícono interpretación del globo terráqueo y seleccione Español.

*(For Spanish interpretation, please click on the globe (interpretation) icon and select Spanish.)*

**Teléfono inteligente:**

Toque el botón "... " Más y seleccione Interpretación de idiomas. Luego toque el idioma "Español".


*(Tap the "... " More button and select Language Interpretation. Then tap on the language "Spanish.")*



# LIVE CAPTIONS

## Windows | macOS

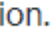

### View closed captioning or live transcription during a meeting or webinar

1. Sign in to the Zoom desktop client.
2. Join a meeting or webinar.
3. Click the **Show Captions** button .

**Note:** The provided subtitles can be clicked and dragged to move their position in the meeting window.

## Android | iOS

### View closed captioning or live transcription during a meeting or webinar

1. Join a meeting with Zoom mobile app.
2. In the meeting controls, tap the **More**  option.
3. Tap the **Show Captions**  option.  
Captions will appear above the meeting controls.



# OTHER DISCLOSURES

- **This meeting is being recorded:** for the purpose of meeting minutes and to make the recording available online. By remaining in this meeting, you consent to being recorded.
- **Chat is disabled:** This is a public meeting and subject to the Brown Act. Since conversations and statements on the chat are not visible to people on the telephone and who are unable to participate, the chat function is disabled; however, the host may send out broadcast messages in the chat when needed.
- For anyone experiencing online technical difficulties, telephone dial-in information will also be provided in the chat.

- **This meeting is being recorded:** for the purpose of meeting minutes and to make the recording available online. By remaining in this meeting, you consent to being recorded.
- **Chat is disabled:** This is a public meeting and subject to the Brown Act. Since conversations and statements on the chat are not visible to people on the telephone and who are unable to participate, the chat function is disabled; however, the host may send out broadcast messages in the chat when needed.
- For anyone experiencing online technical difficulties, telephone dial-in information will also be provided in the chat.





**Press the power button  
once to flash on the display**

(If it does not light up, then HOLD down  
the button to turn the mic on)



**Microphone is muted**

(Press power button to unmute)



**Microphone is unmuted**

(Press power button to mute; please keep  
microphones muted when not in use to  
minimize audio feedback)

# MICROPHONE INSTRUCTIONS



# Land Acknowledgement





ITEM 3

# WELCOME





ITEM 4

# ROLL CALL







## ITEM 5 **Public Comment**

To address the Task Force and provide public comment on **today's agenda items**, please use the \*raise hand\* feature on Zoom. Use the same feature to lower your hand after your comments.

If you are calling in by phone, dial \*9 on the phone's dial pad to raise your hand. Dial \*9 again to lower your hand. Dial \*6 to unmute when told.

***Each speaker is allowed up to 90 seconds.*** Public comment on other Task Force-related subject matters is scheduled for the end of the meeting.

# PUBLIC COMMENT

Each speaker is allowed up to 90 seconds.

30

60

90

TIMER





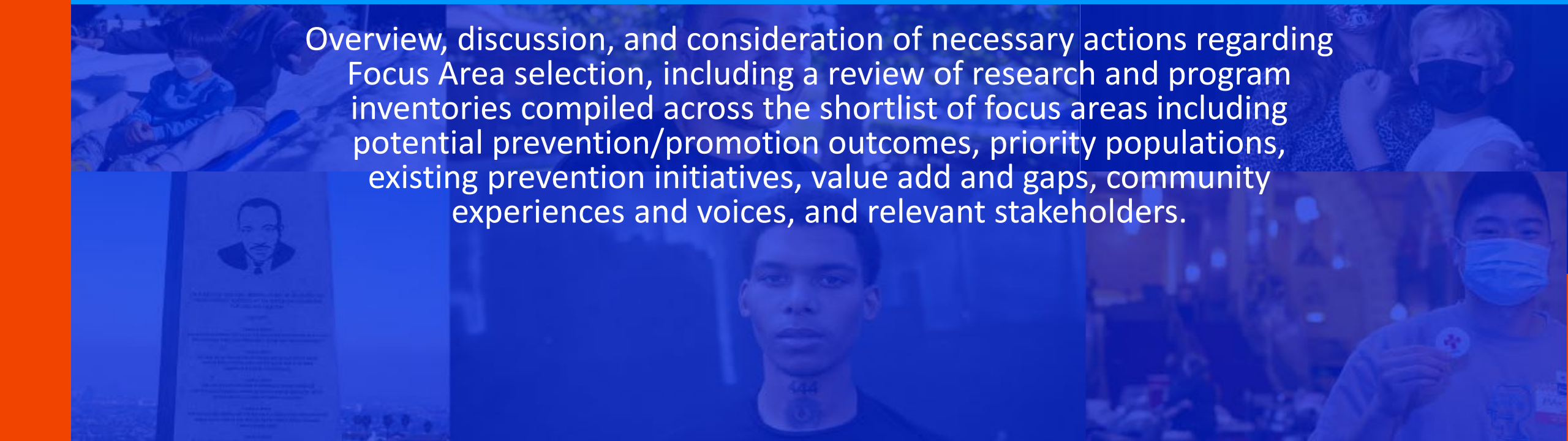
# ITEM 6

Take appropriate action on the Minutes of the Prevention Services Task Force Regular Meeting on June 2, 2023

Attachment(s): June 2, 2023 Draft Meeting Minutes and Recording



# ITEM 7

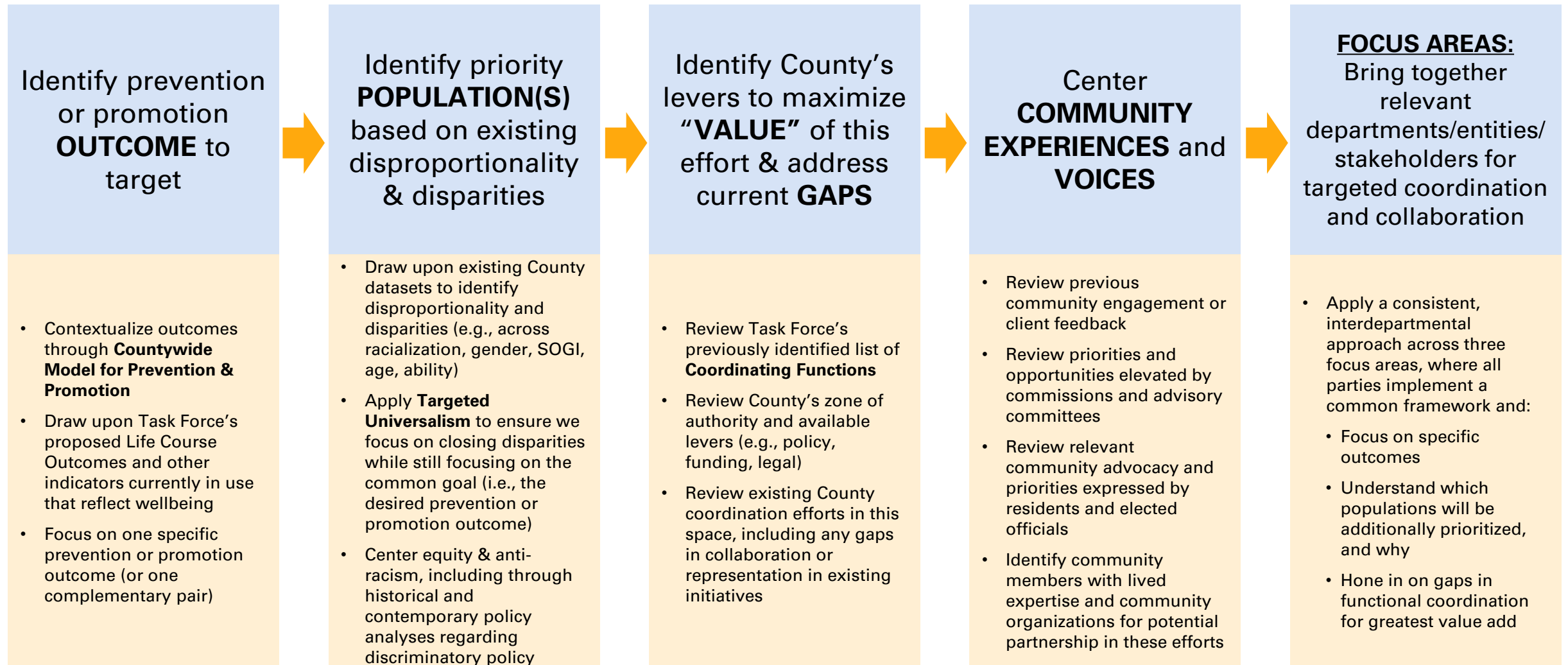


Overview, discussion, and consideration of necessary actions regarding Focus Area selection, including a review of research and program inventories compiled across the shortlist of focus areas including potential prevention/promotion outcomes, priority populations, existing prevention initiatives, value add and gaps, community experiences and voices, and relevant stakeholders.



# Framework for Task Force Focus Areas for Phase 2

## Within each of the selected domains/service areas:

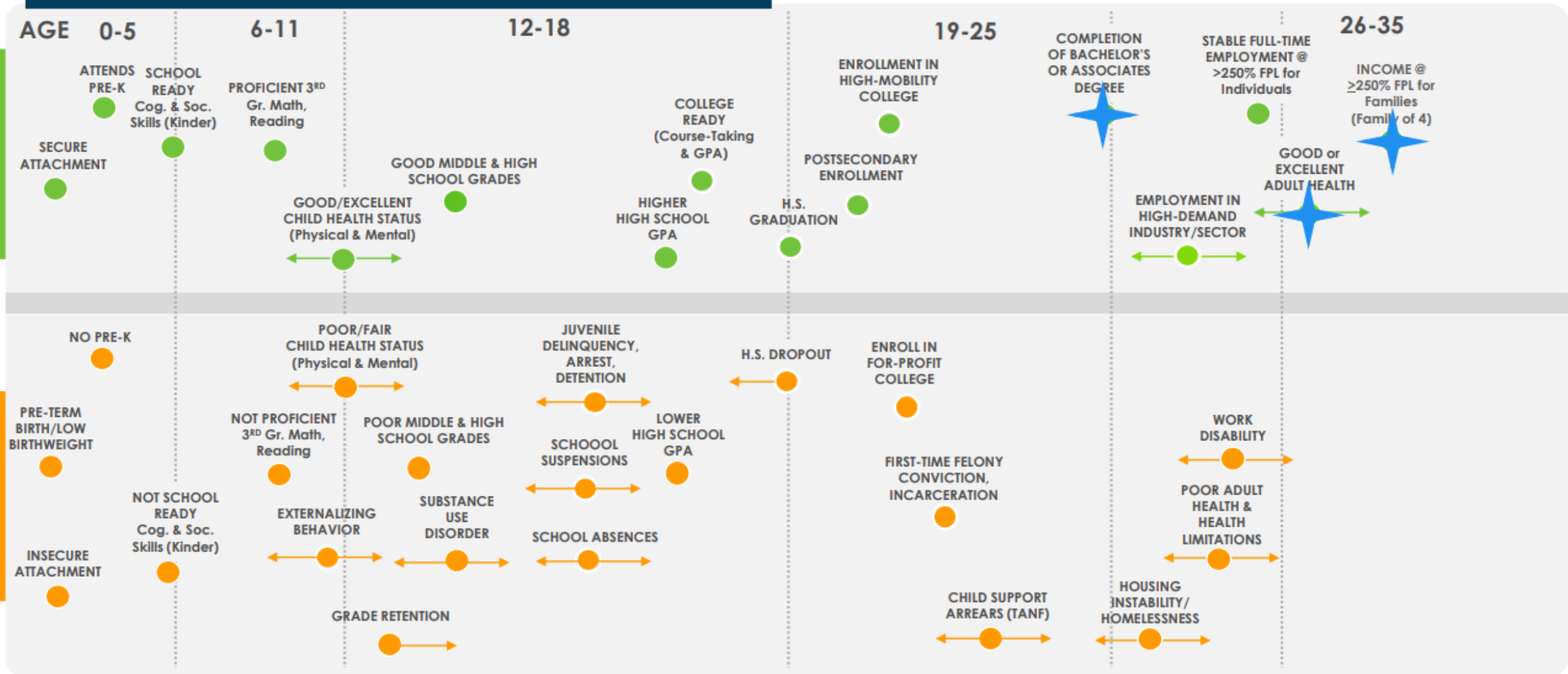


# Striving and Thriving

# Life Course Outcomes

PROMOTION

PREVENTION



SOURCE: Arnold Chandler (2021) *Striving and Thriving: Closing Racial Mobility Gaps Across Generations*



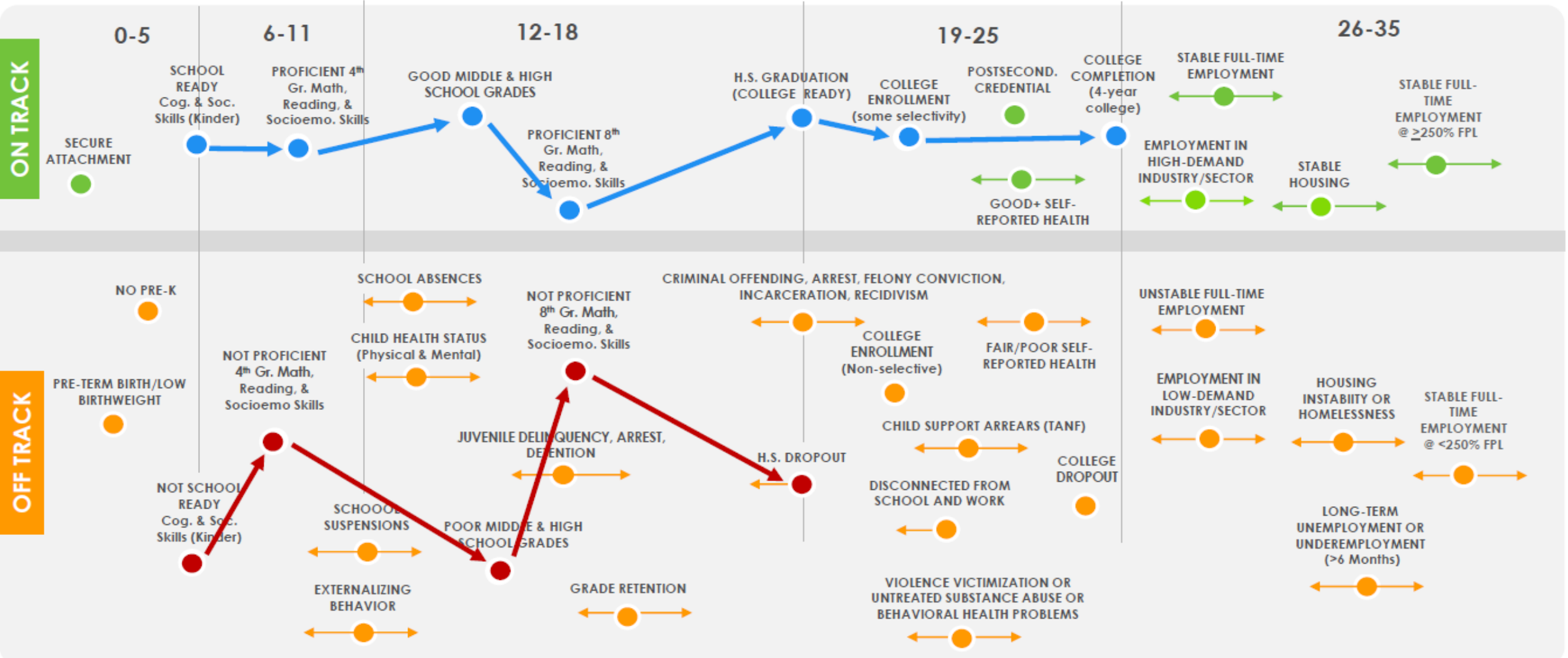
# Thinking in terms of Trajectories

- 1 Trajectories:** a trajectory is a path. Within the life course framework, it describes a series of life course outcomes that lead to a **long-term outcome**.
- 2 Earlier outcomes cause later ones:** Earlier outcomes are important steppingstones to achieving or avoiding later outcomes
- 3 Path-dependency:** Once a person is on a trajectory, it can be difficult to change that trajectory without significant intervention

# Education Trajectory

ON TRACK

OFF TRACK

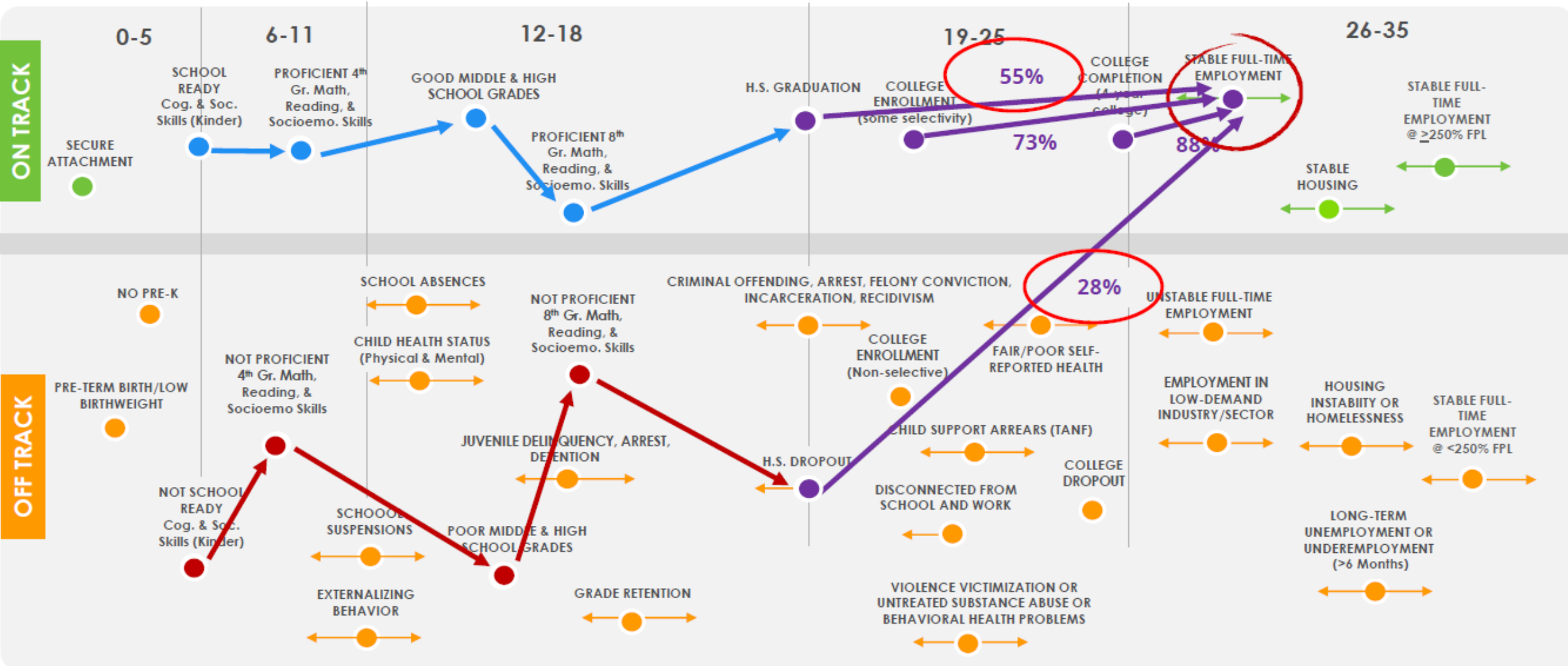




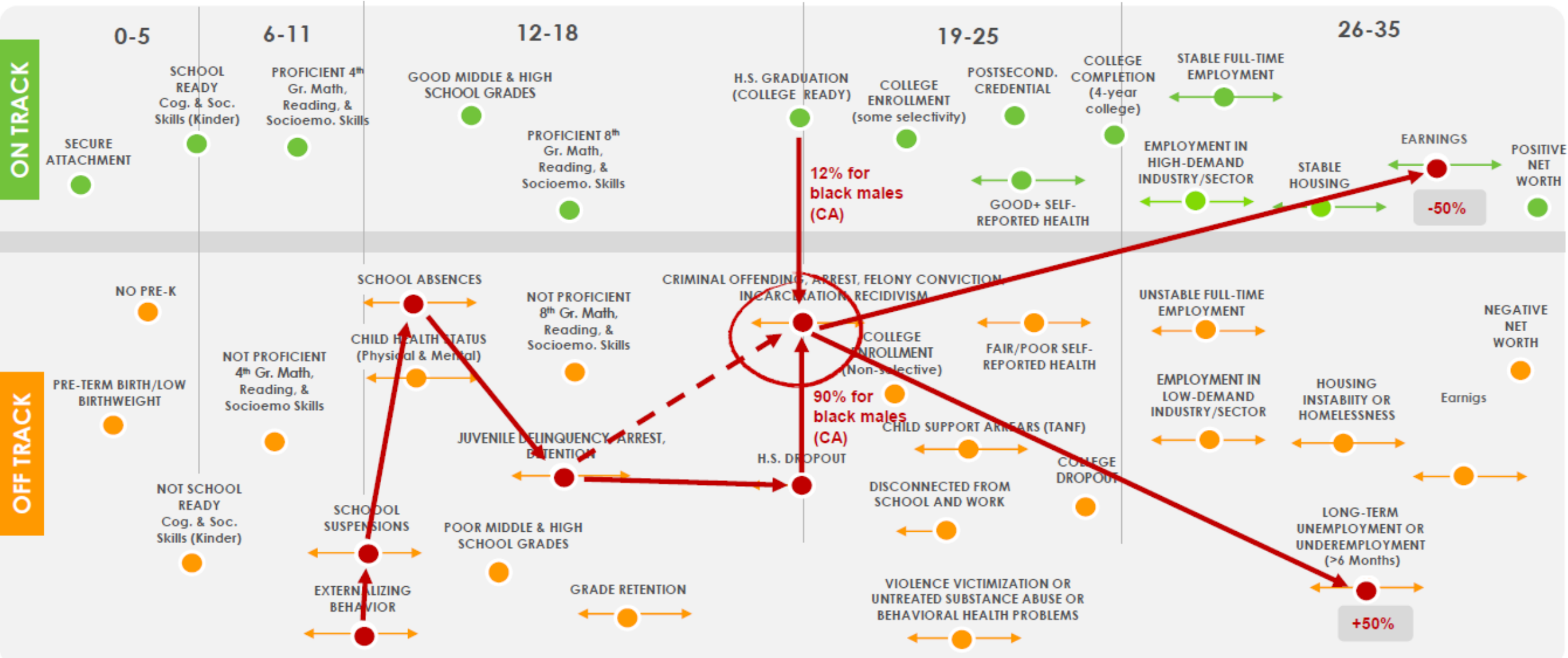
# African-Americans

(U.S. born males ages 18-61, 2010)

## Education Trajectory and Employment

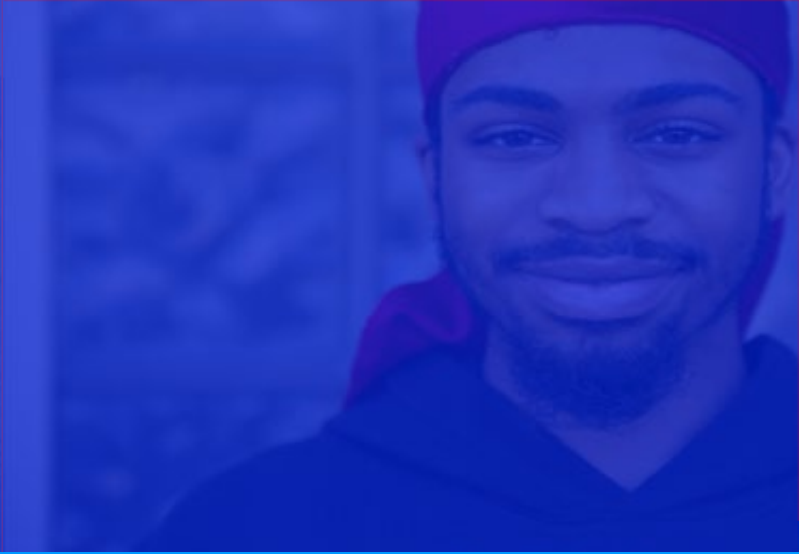


# Prison Trajectory and Income



Steven Raphael (2007) "Early Incarceration Spells and the Transition to Adulthood," in Danziger, Sheldon and Cecilia Elena Rouse (eds) The Price of Independence: The Economics of Early Adulthood, Russell Sage Foundation: New York pp. 278-306.





# Homelessness and Housing



# Homelessness Prevention & Housing Promotion

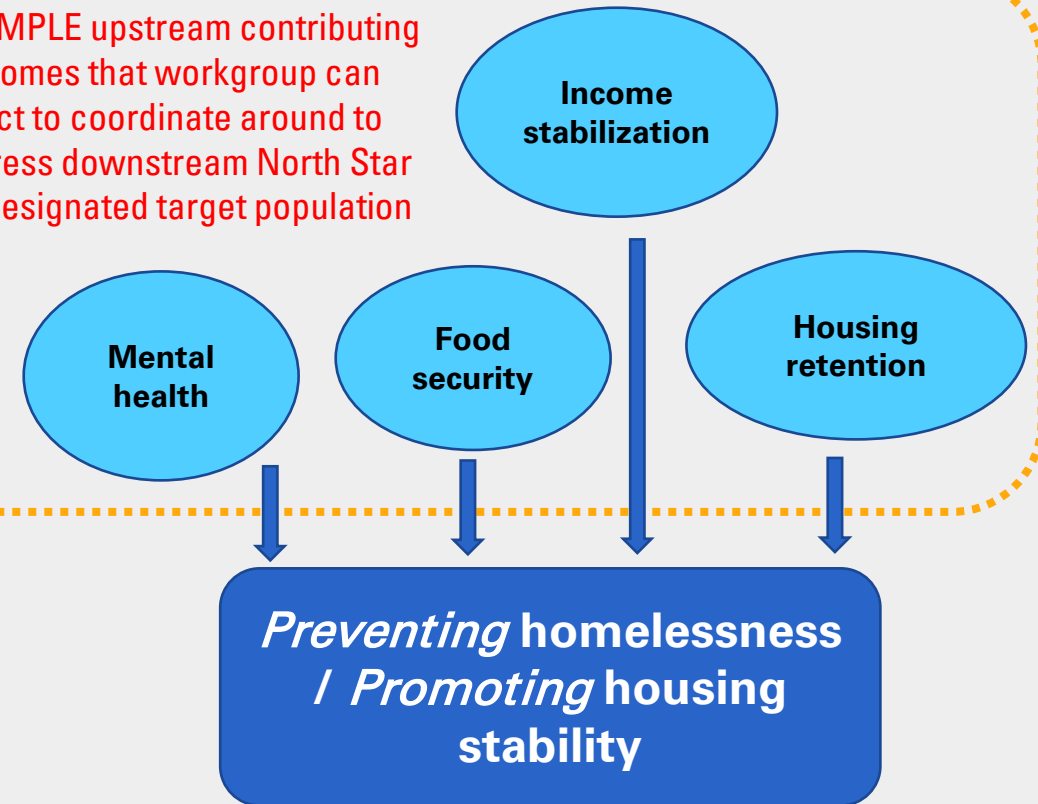
Highly ranked by Task Force members;  
Heightened Board interest

Identify prevention or promotion  
**OUTCOME** to target

## COMPLEMENTARY OUTCOMES: *Preventing homelessness / Promoting housing stability*

- Context: Social and systemic conditions (e.g., racism; labor exploitation; immigration systems; rising rents and cost of living; employment discrimination; lacking, hard to access, and underutilized public benefits; lacking mental health, behavioral, and primary care resources for co-and tri morbid; mass incarceration; insufficient tenant protections) increase barriers to individuals and families having the resources and supports to maintain stable housing.
- Critically, although the County and regional partners have invested heavily in tertiary supports for unhoused and homeless individuals, including emergency and interim housing, there are still major opportunities for the County to strengthen coordination to **proactively strengthen housing stability for individuals before they become homeless.**

EXAMPLE upstream contributing outcomes that workgroup can select to coordinate around to address downstream North Star for designated target population



**"North Star" Outcomes**



# Homelessness Prevention & Housing Promotion

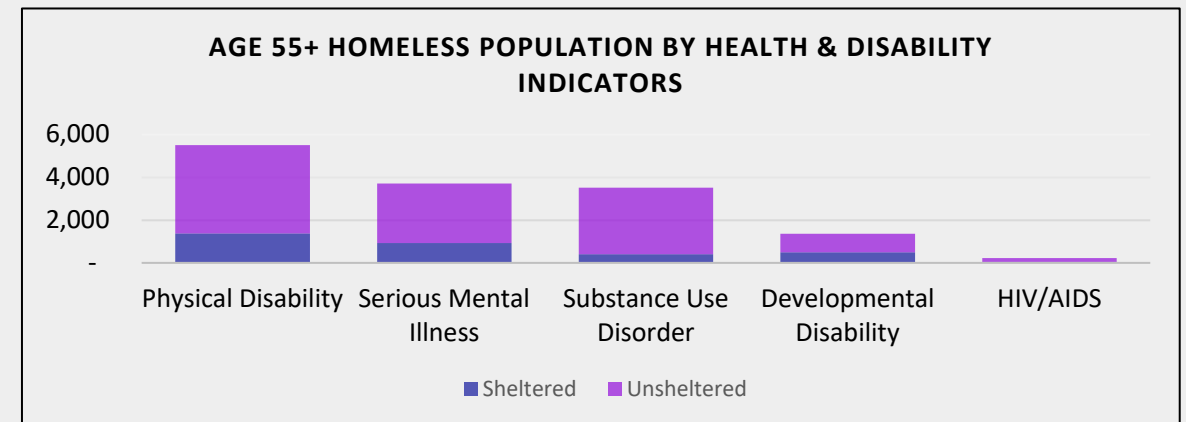
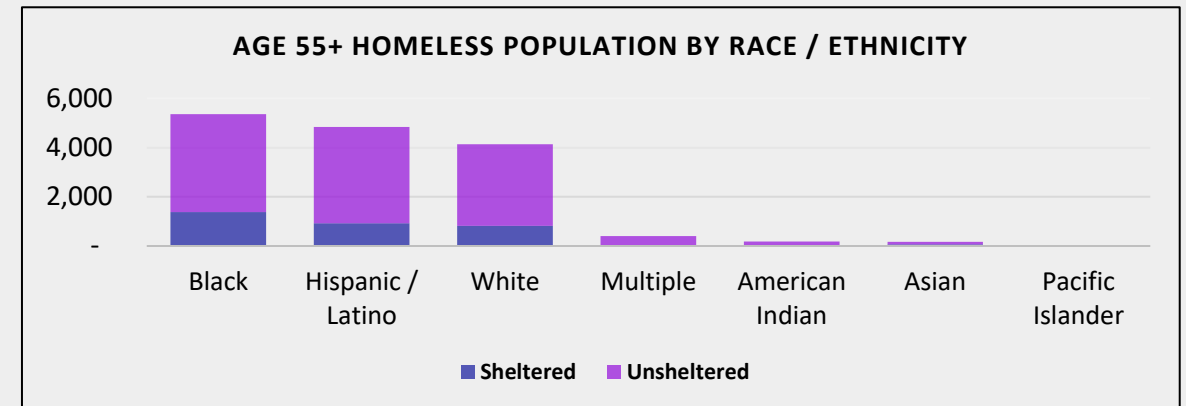
Identify priority **POPULATION(S)** based on existing disproportionality & disparities

**POPULATION(S): Tentative/Sample Older adults and those entering older adulthood**

- Approximately 69,000 individuals are currently unhoused in Los Angeles County. There are many populations with heightened risk and incidence of homelessness and housing instability.
- There may be a particular opportunity to focus on older adults and those entering older adulthood:
  - These individuals are particularly vulnerable when they have also experienced the lifetime impacts of racism, denied economic opportunity/wealth accrual, and other harms that destabilize an individuals' economic wellbeing by the time they enter older adulthood.
  - Ageism in employment and rising costs of living (especially in health care and housing) increase the likelihood that older adults lose economic footing and become homeless.

In addition, we can apply targeted universalism to especially support:

- Black older adults
- Latina/o/x older adults
- Older adults with physical disabilities, serious mental illness, and/or substance use disorders



Data Source: Greater Los Angeles Homeless Count

# Homelessness Prevention & Housing Promotion

## Identify County's levers to maximize "VALUE" of this effort & address current **GAPS**

- County holds several levers and responsibility in this focus area, often in partnership with cities
- **Lead agencies:**
  - Homeless Initiative (CEO-HI)
  - Los Angeles Homeless Services Authority (LAHSA)
  - LA County Development Authority (LACDA)
- Several other County initiatives, including two intersectional ARDI initiatives, [Black People Experiencing Homelessness](#) (BPEH) and [Latinos Experiencing Homelessness](#) (LPEH)
- Board has passed a [Declaration of Local Emergency](#) (largely focused on "tertiary" or "remedy" level services and supports) along with various recent motions
- There is an opportunity to go further upstream where fewer existing services and coordination exists:
  - **Potential sweet spot:** individuals who are not yet homeless but are "precariously" housed (e.g., one emergency, medical bill, or job loss away from not being able to afford rent; on the waitlist for affordable or public housing, etc.)

## **PROGRAM INVENTORY** (Non-exhaustive; based on departmental and member responses to Task Force's Funding Streams Analysis from summer 2022)

### **PRIMARY PREVENTION**

- Housing Alternatives for Seniors (LACDA)
- Homeless Education (LACOE)
- Various LACDA services supporting seniors

### **SECONDARY PREVENTION**

- Homeless Prevention Promotion for Families / Adults (LAHSA, CEO-HI)
- Supervised Independent Living Program Plus (DCFS)
- Various emergency rental/utilities assistance administered during COVID

### **TERTIARY PREVENTION**

- Recovery Bridge Housing (DPH)
- Rapid Rehousing and Temporary Emergency Shelters programs (LACDA, LAHSA, DHS)
- Bringing Families Home (DCFS, LACDA)
- Various emergency and immediate response programs to provide housing for individuals already or imminently homeless (note: may more appropriately fall under "Remedy"); e.g., Coordinated Entry System (LAHSA), Housing for Health (DHS), CalWorks Homeless programs (DPSS), Housing and Job Development Division (DMH)

# Homelessness Prevention & Housing Promotion

## Center **COMMUNITY EXPERIENCES** and **VOICES**

Many community organizations and residents have expressed a desire for reform and policy change in this space. These perspectives have been shared and summarized through various County, City, and community-based spaces, including but not limited to:

- Blue Ribbon Commission on Homelessness (final meeting held on 3/30/22, publishing a [Final Report and Recommendations](#))
- [Measure H Citizens Oversight Advisory Board](#)
- [Los Angeles Regional Homelessness Advisory Council](#)
- [Homeless Health Advisory Committee](#)
- [LACDA Housing Advisory Committee](#)
- [Black People Experiencing Homelessness Steering Committee](#)
  - [2018 Report and Recommendations of the Ad Hoc Committee on Black People Experiencing Homeless](#) (LAHSA)

## HIGHLIGHTED THEMES AND PERSPECTIVES (Prevention/Promotion Emphasis)

Upstream/downstream impacts of generational racism across education, criminal justice, housing, employment, etc.

Cost of living and employment barriers

Criminalization of homelessness; relationship between incarceration and homelessness

Intergenerational poverty and child welfare system trauma

Lack of culturally-specific resources (including language access)

Disjointed leadership, coordination, and authority across government entities



# Homelessness Prevention & Housing Promotion

## **FOCUS AREAS:**

Bring together relevant departments/entities/stakeholders for targeted coordination and collaboration

## **STAKEHOLDERS**

- Existing County leads, including CEO-HI and LAHSA, as well as LACDA and other health and human services agencies administering direct services and programs relating to housing and economic stability services, especially for older adults (e.g., Aging, DPSS, DHS, etc.)
- Additional departments or entities with programs that provide resources and supports to bolster economic and housing security (e.g., DEO, DCFS, etc.) as well as address physical and behavioral health needs, including substance use disorder (e.g., DPH, DMH, DHS, etc.)
- Ongoing commissions and recent initiatives (see list of commissions and advisory bodies above)
- Administrative departments/entities with authorities and expertise relating to coordinating functions (e.g., CIO, County Counsel, CEO, contracting)
- Per previous section, community members with lived expertise, community organizations, and philanthropic partners

## **Considerations for Focus Area “Finalization”:**

- **Focus on specific “North Star” outcome to prevent or promote** (later, the domain workgroup can identify most urgent and/or effective contributing outcomes to target upstream)
- **Understand which populations will be additionally prioritized, and why**
- **Hone in on gaps in functional coordination for greatest value add.**

Consider “low hanging fruit” on the list of coordinating functions previously identified that could be piloted in this workgroup that could be later replicated in other domains:

- Coordination, collaboration, & communication
- Policy and agenda setting
- Programming decisions
- Budgeting
- Funding acquisition & management
- Contracting
- Legal
- Staffing for coordination
- Service delivery
- Co-creating solutions with community
- Partnering with community organizations
- Data tracking/metrics
- IT systems



# Child and Family Well-Being



# Child and Family Well-Being

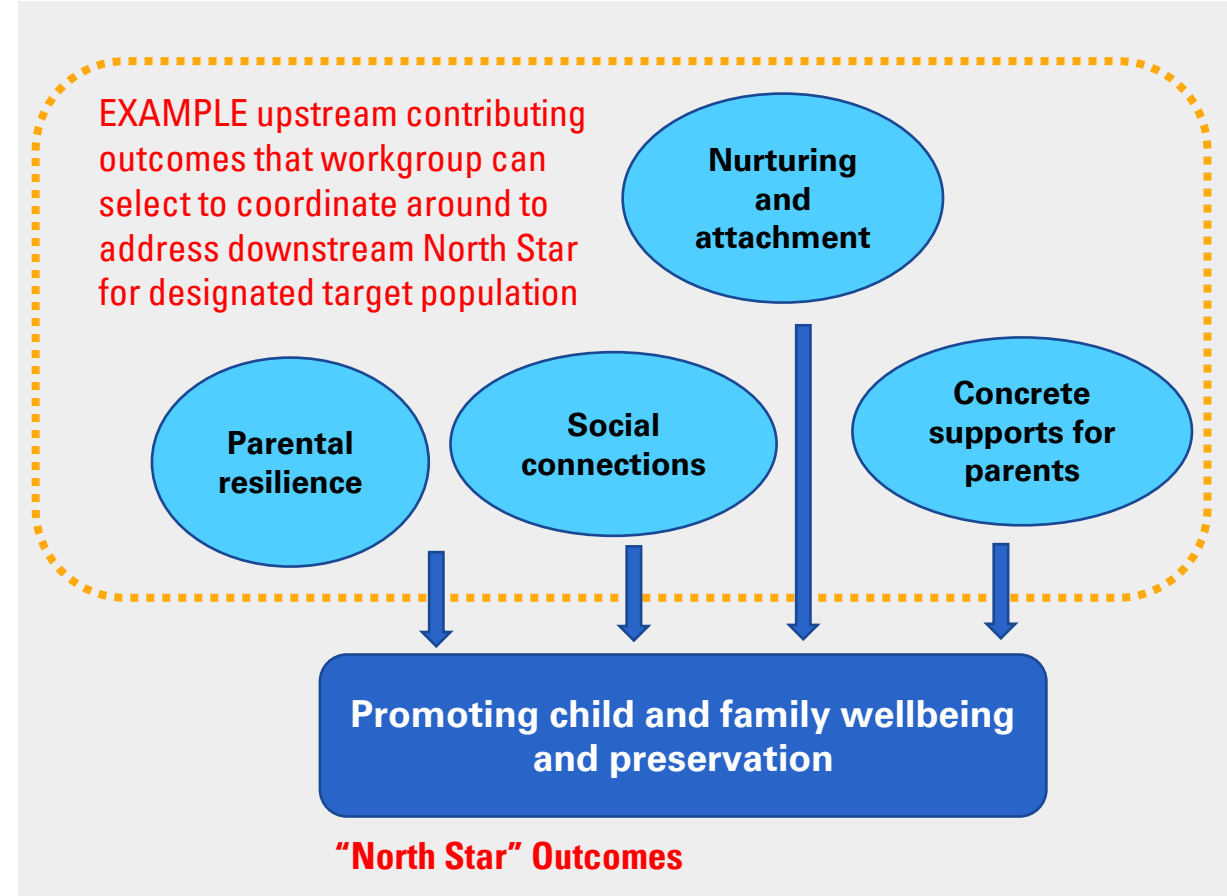
Identify prevention or promotion  
**OUTCOME** to target

**COMPLEMENTARY OUTCOMES:** Promoting child and family wellbeing and preservation (specifically mitigating and addressing the impacts of child poverty)

- Social conditions increase barriers and make it harder for parents and families to ensure that their children have the resources and supports to thrive.
- Cultural stigma, overcomplexity and siloing of public systems, and poor and/or disrespectful customer service also serve as barriers

Promoting the wellbeing of children and families may also have the secondary effect of reducing interactions with child welfare systems, especially when such cases are due to alleged “neglect.”

Should the Task Force collaborate on this focus area in Phase 2, it may seek to further define measures for wellbeing (e.g., to include [protective factors](#))



See also:

- [Countywide Prevention Metrics](#) for child and family wellbeing, developed by OCP and OCIO in December 2022.
- California Department of Social Services (CDSS) [County Prevention Dashboard](#)
- First5LA [Impact Framework](#) and [Indicators Report](#)
- [California Strong Start Index](#) developed by the First 5 Center for Children’s Policy and Children’s Data Network



# Child and Family Well-Being

Identify priority **POPULATION(S)** based on existing disproportionality & disparities

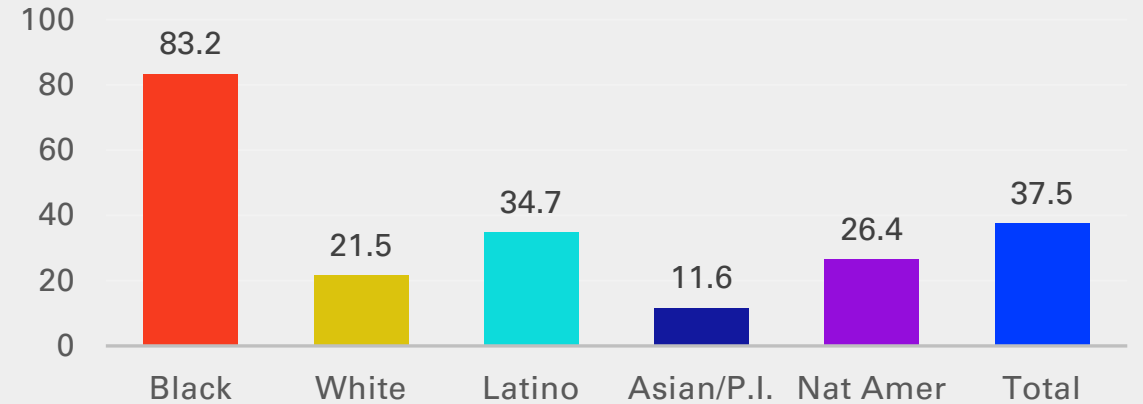
**POPULATION(S):** Children and families, especially those who are lower income and face greater economic insecurity and barriers to wellbeing

In addition, we can apply targeted universalism to especially support Black, Latino, and Native families given:

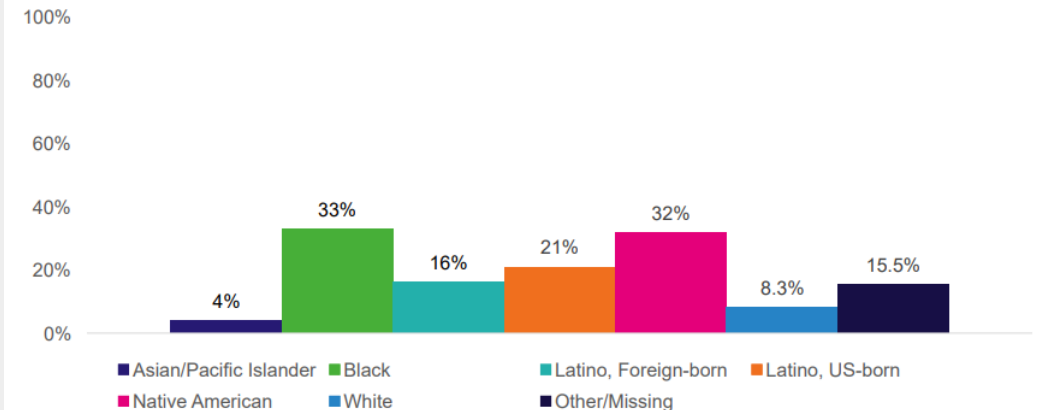
- Existing racial disproportionality in DCFS (e.g., # of cases, maltreatment allegations/investigations/substantiations, and # of children first entering foster care, etc.)
- Historical racism documented across U.S. child welfare systems (see: [Attachment III, page 24](#): Contextualizing LA County's Previous Efforts in Child Welfare)

See also: State of California's [5-year Prevention Plan](#), which lists several priority populations deemed to be at "imminent risk" of entering foster care, including several that are somewhat "upstream" (e.g., any LGBTQ children)

Child Maltreatment Investigations Incidents per 1,000 Children (2022)



**1 out of 3 Black and Native American children who turned 5 in 2020 in L.A. County were Referred to CPS at least once during their first 5 years of life**



Data Source: Greater Los Angeles Homeless Count

# Child and Family Well-Being

## Identify County's levers to maximize "VALUE" of this effort & address current **GAPS**

- County holds several levers and responsibility in this focus area, including innovative ongoing and prior initiatives relating to prevention
- **Lead agencies:** DCFS, OCP, CCF, First5LA
- Several other agencies administer direct services and programs for children, youth, and families, including LACOE, DHS, DMH, DYD, Youth Commission, etc.
- There remains an opportunity for the Task Force to support and uplift ongoing prevention and promotion efforts in this focus area, especially in ensuring that coordination across all relevant health and human service entities can more smoothly and easily serve LA County's children and families.
- This includes by:
  - Better engaging community members in policy and program decisions
  - Improving resource navigation and access
  - Addressing legal and technical barriers to data sharing, and
  - Advancing a policy agenda at the federal and state levels to address common issues relating to funding and program requirements.

## **SIGNIFICANT ONGOING INITIATIVES**

- [Mandated Supporting Initiative](#)
- [Thriving Families, Safer Children](#)
- Several ongoing funding initiatives (e.g., [FFPSA](#), [CDSS State Block Grant](#), [ACEs Aware](#), [CA Children and Youth Behavioral Health Initiative](#), [CalAIM](#) (Medi-Cal funding waiver), [Community Schools Initiative](#))

## **PROGRAM INVENTORY** (Non-exhaustive)

### **PRIMARY PREVENTION**

- Welcome Baby Hospitals (First5LA)
- Prevention & Aftercare Services
- Community Schools Initiative (LACOE, DPH, DMH)
- Various Home Visitation Programs (managed by DPH, various other agencies including DPSS and DMH)
- Various programming and activities across community service depts (e.g., Parks and Recreation)
- Comprehensive Perinatal Services Program (DPH)
- SIDS Program (DPH)

### **SECONDARY PREVENTION**

- DPSS/DCFS Linkages
- Alternative Response Services (DCFS)
- Select Home Visiting Programs (First5LA)
- Help Me Grow Los Angeles (DPH, First5LA)

### **TERTIARY PREVENTION**

- Adoption Promotion & Support Services (DCFS)
- Family Visitation Centers/Safe Child Custody Exchange (DCFS)

# Child and Family Well-Being

## Center **COMMUNITY EXPERIENCES** and **VOICES**

- Several County organizations and programs, including DCFS, OCP, First5LA, Thriving Families, Safer Children, and others have conducted extensive community engagement and feedback in this focus area, which the Task Force can continue to leverage and uplift.
- While the Task Force should continue to center and learn about “downstream” experiences of children and families involved in DCFS cases, there is also opportunity to learn more from programs like First5LA’s [Best Start Communities](#) and [Thriving Families, Safer Children](#), both of which have worked with families, parents, and children to identify community priorities further upstream to in turn enact changes in systems to respond to those priorities.
- Many community organizations and residents have expressed a desire for reform and policy change in this space, as expressed through the [Reimagining Child Safety Coalition](#) and other advocacy efforts

## HIGHLIGHTED THEMES AND PERSPECTIVES (Prevention/Promotion Emphasis)

Incorporating lived expertise into policy and program decision making and delivery decisions

Access to identity-based, trauma-informed, and culturally-responsive care, especially for LGBTQ+ youth

Difficult for youth and families to navigate services

Addressing poverty and providing families with upstream supports

Families and youth do not feel safe or comfortable accessing care

Difficult to switch between case workers / inconsistent communication

Safer communities

Affordable housing

Free and affordable activities

Good jobs and stability

Affordable child care

Community resources

Health and mental health

Family time

United communities



# Child and Family Well-Being

## **FOCUS AREAS:**

Bring together relevant departments/entities/stakeholders for targeted coordination and collaboration

## **STAKEHOLDERS**

- Existing leads, including DCFS, OCP, CCF, and First5LA, as well as other health and human services agencies administering direct services and programs to children, youth, and families, including LACOE, DHS, DMH, Youth Commission, etc.
- Additional departments or entities with programs that provide resources and supports to bolster family wellbeing (e.g., DPH, DPSS, DEO, Aging, LACDA, Library, Parks and Recreation, Arts and Culture), but also those outside of County such as school districts, cities, and workforce development boards, etc.
- Administrative departments/entities with authorities and expertise relating to coordinating functions (e.g., CIO, County Counsel, CEO, contracting)
- Per previous section, community members with lived expertise, community organizations, and philanthropic partners

## **Considerations for Focus Area “Finalization”:**

- **Focus on specific “North Star” outcome to prevent or promote** (later, the domain workgroup can identify most urgent and/or effective contributing outcomes to target upstream)
- **Understand which populations will be additionally prioritized, and why**
- **Hone in on gaps in functional coordination for greatest value add.**

Consider “low hanging fruit” on the list of coordinating functions previously identified that could be piloted in this workgroup that could be later replicated in other domains:

- Coordination, collaboration, & communication
- Policy and agenda setting
- Programming decisions
- Budgeting
- Funding acquisition & management
- Contracting
- Legal
- Staffing for coordination
- Service delivery
- Co-creating solutions with community
- Partnering with community organizations
- Data tracking/metrics
- IT systems



# Justice Reform & Public Safety



# Justice Reform & Public Safety

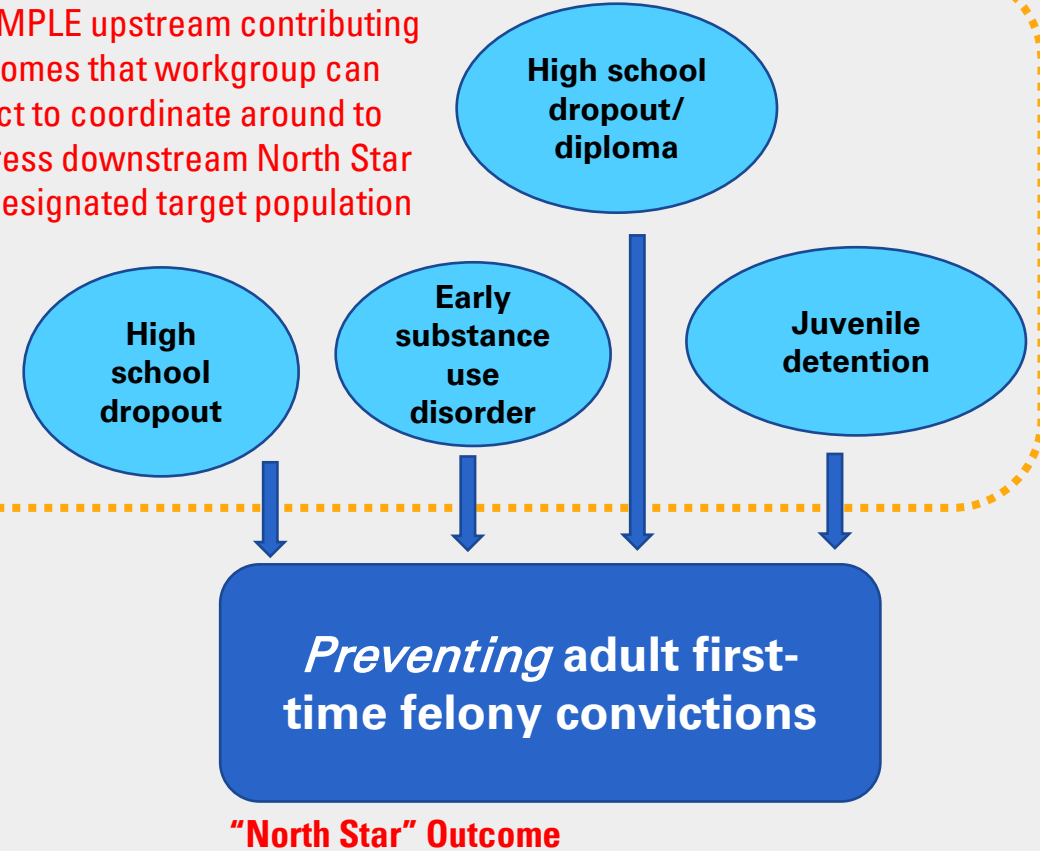
Highly ranked by Task Force members;  
Heightened Board interest

Identify prevention or promotion  
**OUTCOME** to target

## COMPLEMENTARY OUTCOMES: Preventing adult first-time felony convictions

- Context: As described in the County's [Racial Equity Strategic Plan](#), the scale of prison incarceration in the U.S. has changed dramatically over the past 50 years, increasing by 430% since the early 1970s. However, this explosion in incarceration has been experienced unevenly across race and levels of educational attainment. Accordingly, "reduce adult first-time felony convictions" is one of Los Angeles County's Racial Equity 10-Year Strategic Goals, which have been adopted by the Board.
- Felony convictions are a key driver of long-term negative outcomes in other life areas because of the array of exclusions it can confer from employment, housing, and other opportunities in life.

EXAMPLE upstream contributing outcomes that workgroup can select to coordinate around to address downstream North Star for designated target population





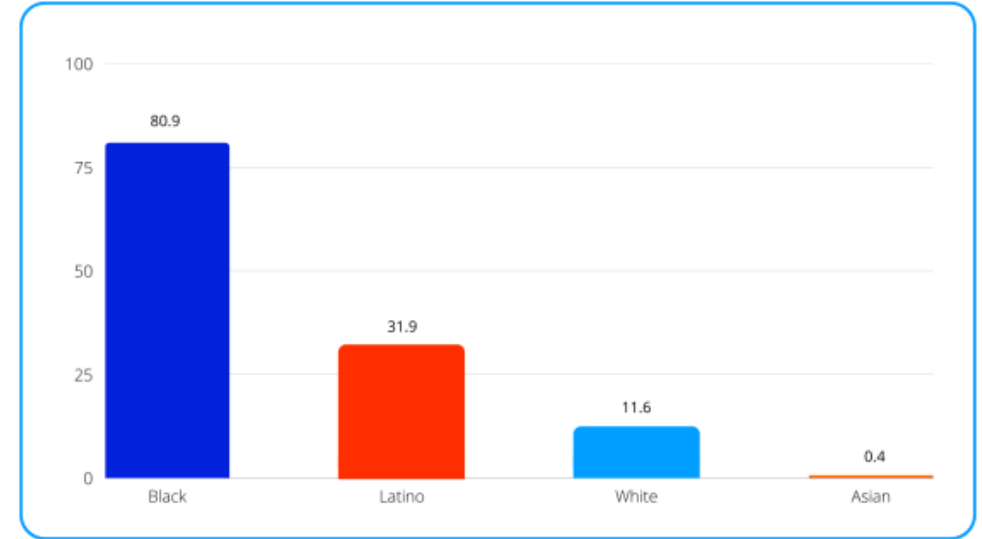
# Justice Reform & Public Safety

Identify priority **POPULATION(S)** based on existing disproportionality & disparities

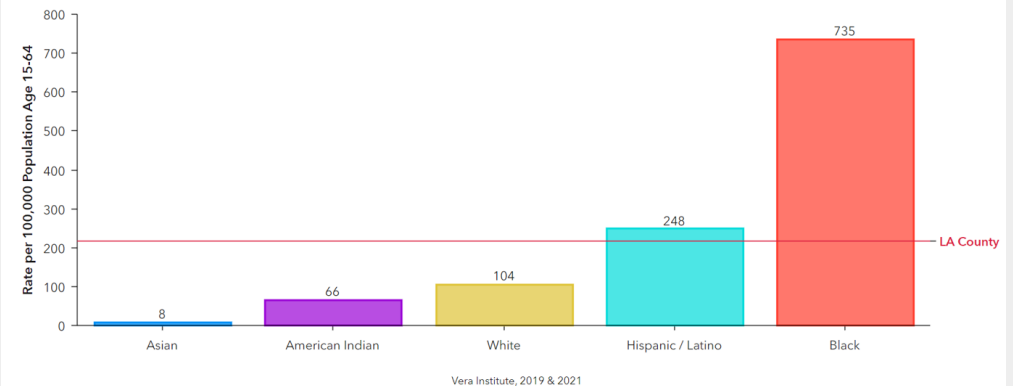
**POPULATION(S):** Young adults with attributes or experiences that are shown to be correlated with higher rates of subsequent incarceration or justice involvement

In addition, we can apply targeted universalism to especially support young Black and Latino men, who are disproportionately represented in felony convictions and other outcomes across the criminal justice system. For the U.S., the lifetime risk of imprisonment for males born 1975 to 1979 was 27% for Black men, 12% for Latinos, and 5% for white men. In California, approximately 90% of Black men that dropped out of high school have gone to prison in recent decades.

Figure 4. First-Time Adult Felony Convictions by Race/Ethnicity per 10,000 (2019)<sup>7</sup>



Incarceration Rate (Jail) Per 100,000 Population Age 15-64



See also: [YDD's Quarterly Data Dashboards](#).

# Justice Reform & Public Safety

## Identify County's levers to maximize "VALUE" of this effort & address current **GAPS**

- While the County holds some levers and authority relating to policing and incarceration, there is an opportunity to more effectively utilize preventative supports and resources, including diversion but also other upstream strategies.
- **Lead agencies:**
  - Justice, Care & Opportunities Department (JCOD)
  - Department of Youth Development (DYD)
- With the Board's motions to establish JCOD and DYD, the Board has once again signaled its efforts to "reduce the County's over-reliance on incarceration of justice-impacted populations, and especially that of youth and young people."
- In addition to these efforts, there remains an opportunity for the Task Force to advance and bolster prevention efforts led to date by JCOD and DYD. The Task Force can work to bridge additional departments and programs to connect individuals to economic supports and diversion resources, especially by addressing coordinating functions.

**PROGRAM INVENTORY** (Non-exhaustive; based on departmental and member responses to Task Force's Funding Streams Analysis from summer 2022)

### **PRIMARY PREVENTION**

- Office of Violence Prevention (DPH)

### **SECONDARY PREVENTION**

- Client Assessment Recommendation and Evaluation (CARE) (Public Defender)
- Youth Pre-Filing Diversion (DA)

### **TERTIARY PREVENTION**

- Partners for Justice (Public Defender)
- Teen Court (Court Program) (Public Defender)
- Prison2Employment Program (DEO)
- Mental Health Court Linkage (DA, DMH)

# Justice Reform & Public Safety

## Center **COMMUNITY EXPERIENCES** and **VOICES**

Many community organizations and residents have expressed a desire for reform and policy change regarding carceral policies, including during community engagement that shaped the CFCI initiative.

Should the Task Force pursue this focus area in Phase 2, it may consider:

- Identifying community members with lived experience regarding justice system interactions, diversion resources, and other County health and human service systems
- Community organizations and philanthropic partners with extensive experience providing direct resources and supports to justice-impacted individuals, including during pre-trial, diversion, incarceration, reentry, and other experiences.

## HIGHLIGHTED THEMES AND PERSPECTIVES (Prevention/Promotion Emphasis)

Community-based  
pre-trial services

Community  
leadership and lived  
expertise

Gender justice

Increased diversion

Mental health  
services

Divestment from  
youth detention and  
supervision

Non-law enforcement  
response to crises  
and community  
needs

Care and support  
needs



# Justice Reform & Public Safety

## **FOCUS AREAS:**

Bring together relevant departments/entities/stakeholders for targeted coordination and collaboration

## **STAKEHOLDERS**

- Existing leads, including JCOD and DYD as well as other health and human services agencies administering direct services and programs relating to economic opportunity, mental health, and overall wellbeing for young people (e.g., DEO, DMH, LACOE, etc.)
- Additional departments or entities with programs that provide resources and supports to bolster economic and housing security and community supports (e.g., DPH, DEO, DCFS, DHS, etc.)
- Administrative departments/entities with authorities and expertise relating to coordinating functions (e.g., CIO, County Counsel, CEO, contracting)
- Per previous box, community members with lived expertise, community organizations, and philanthropic partners

## **Considerations for Focus Area “Finalization”:**

- **Focus on specific “North Star” outcome to prevent or promote** (later, the domain workgroup can identify most urgent and/or effective contributing outcomes to target upstream)
- **Understand which populations will be additionally prioritized, and why**
- **Hone in on gaps in functional coordination for greatest value add.**

Consider “low hanging fruit” on the list of coordinating functions previously identified that could be piloted in this workgroup that could be later replicated in other domains:

- Coordination, collaboration, & communication
- Policy and agenda setting
- Programming decisions
- Budgeting
- Funding acquisition & management
- Contracting
- Legal
- Staffing for coordination
- Service delivery
- Co-creating solutions with community
- Partnering with community organizations
- Data tracking/metrics
- IT systems

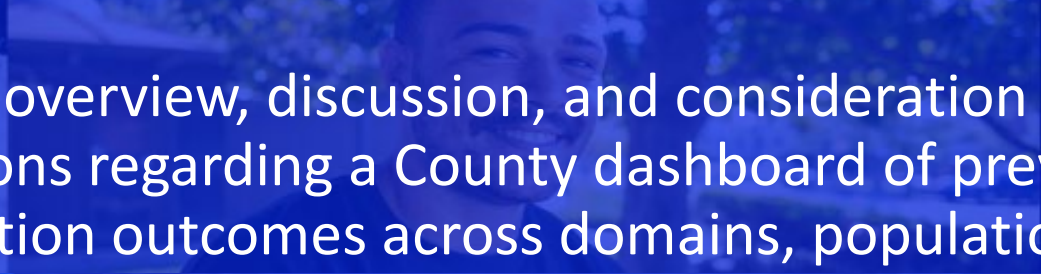


# DISCUSSION

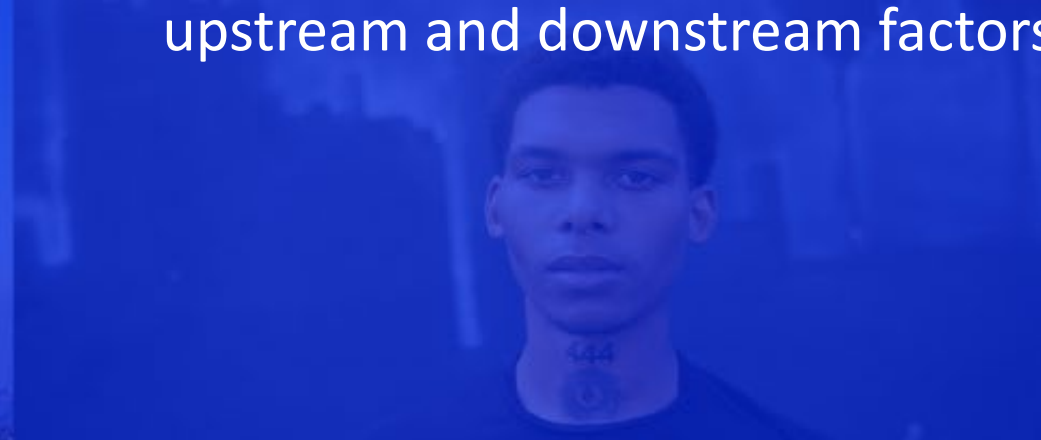




# ITEM 8



Brief overview, discussion, and consideration of necessary actions regarding a County dashboard of prevention and promotion outcomes across domains, population groups, and upstream and downstream factors.





# COUNTY DASHBOARD OF PREVENTION & PROMOTION OUTCOMES

In response to the Board of Supervisor's Directive to reduce health inequities by considering measures to coordinate efforts across County departments and community partners...

- ARDI is developing a Prevention and Promotion Dashboard that includes data for several task force focus areas **disaggregated** by age (i.e., across the life span), race, and ability/disability status
- Will also include a visual representation of our analysis of the **upstream factors** contributing to the outcomes the task force seeks to prevent
- Also **preventive and promotive strategies** County department can implement or focus on to improve outcomes

### Factors Contributing to Homelessness

There are numerous upstream factors and experiences that make it more likely for individuals to experience housing instability. Click on the buttons below to learn more...



### Homelessness Outcomes

Below are the numerous homeless and housing indicators for which data are currently available. Choose an indicator below to explore



<p><b>Total counts of homeless individuals and households</b></p> <p># #</p> <p><i>Note: Idea to have maps as indicator-specific. May appear as a popup or redirect.</i></p> <p>Map</p>	<p><b>Count / % of homeless individuals by race/ethnicity: 7 categories</b></p>
<p><b>Count / % of homeless individuals by age: 12 groups</b></p>	<p><b>Count / % of homeless individuals by gender: 5 categories</b></p>
<p><b>Count / % of homeless individuals by household composition: in households, not in households</b></p>	<p><b>Count / % of homeless individuals by chronic homeless status</b></p>
<p><b>Count of homeless individuals by reported health and disability (over 18 only)</b></p>	<p><b>Count / % of homeless individuals by veteran status (over 18 only)</b></p>

### Strategies to Increase Housing Stability

There are numerous strategies that the County can use to disrupt adverse housing outcomes and promote more increased housing stability. See below.

- Develop affordable housing across LA County
- Increase wages for low income households
- Increase food security among rent-burdened households
- Improve educational attainment rates of foster youth and youth at risk of non-completion of high school degree and college
- Address mental health needs of individuals at risk of homelessness
- Assist affected household members in reducing and/or eliminating medical debt

### Filter by Life Stage

- All
- Children
- Young Adults
- Adults
- Older Adults

### Filter by Race

- All
- Hispanic/Latino
- Black
- White
- Asian
- Other

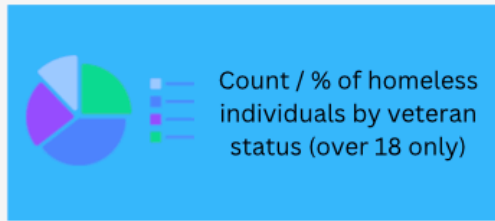
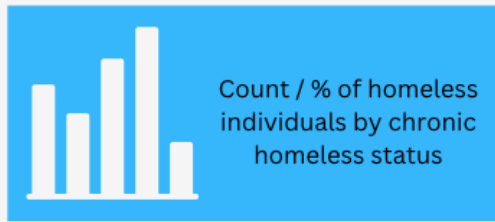
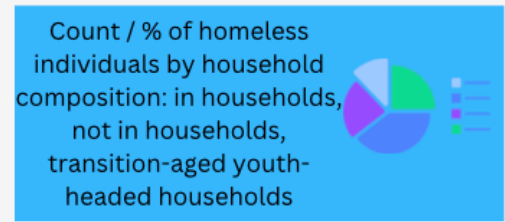
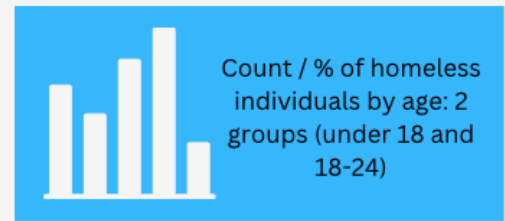
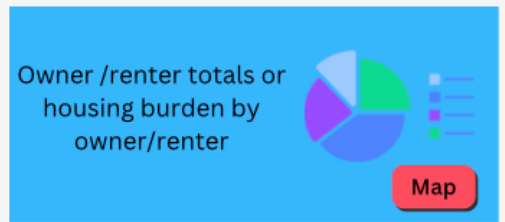
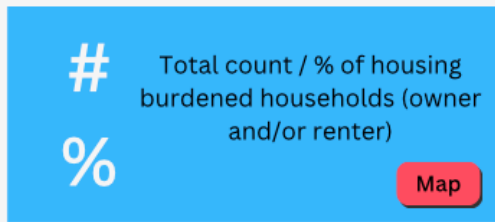
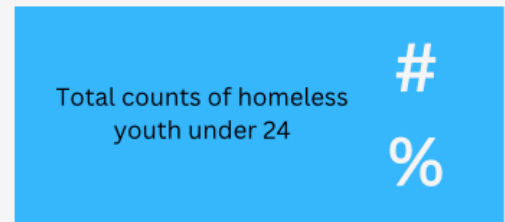
### Filter by Dis/ability

- All
- People with Disabilities

Children & Families	Economic	Housing	Physical Health	Mental Health	Food	Education	Criminal Justice
---------------------	----------	---------	-----------------	---------------	------	-----------	------------------

#### Homelessness: Children and Young Adults Aged 24 and Under *Los Angeles County Homeless Services Authority, data for LA Continuum of Care*

#### Housing Insecurity Variables: Householder Aged 15-24 Years *American Community Survey*





### Filter by Life Stage

- All
- Children**
- Young Adults
- Adults
- Older Adults

### Filter by Race

- All**
- Hispanic/Latino
- Black
- White
- Asian
- Other

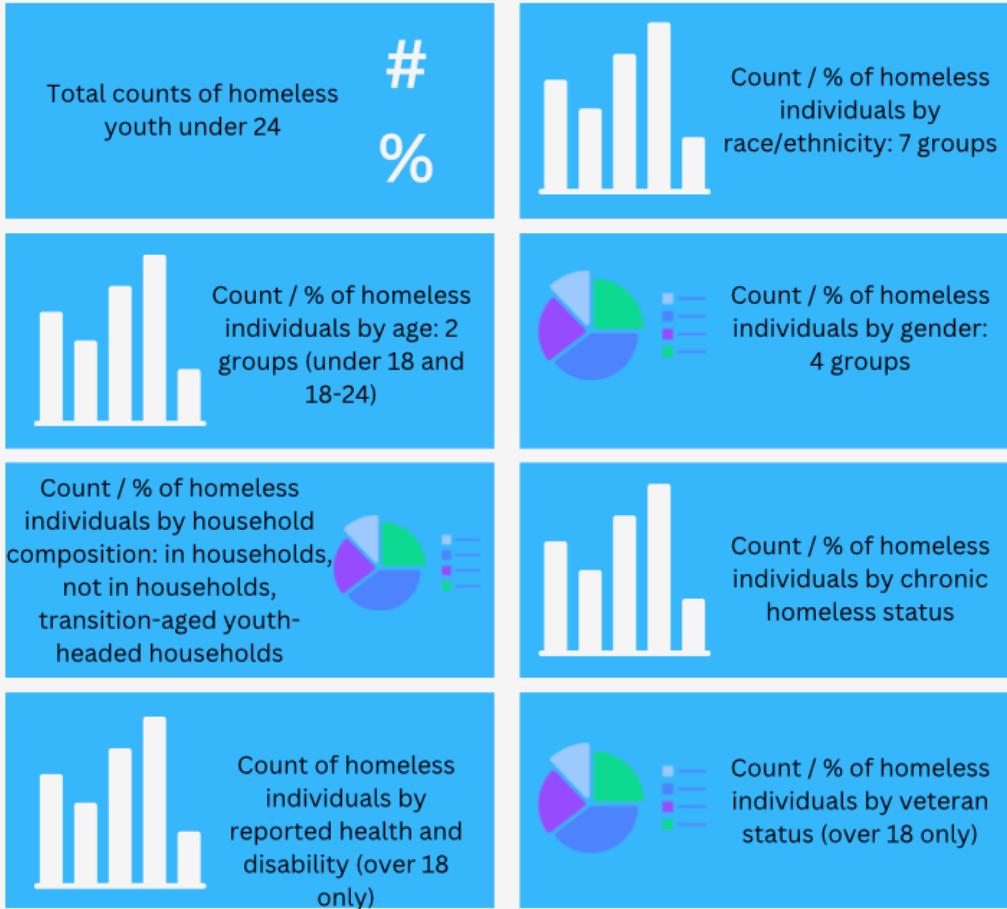
### Filter by Dis/ability

- All
- People with Disabilities**

Children & Families	Economic	<b>Housing</b>	Physical Health	Mental Health	Food	Education	Criminal Justice
---------------------	----------	----------------	-----------------	---------------	------	-----------	------------------

## Homelessness: Children and Young Adults Aged 24 and Under

*Los Angeles County Homeless Services Authority, data for LA Continuum of Care*



### Filter by Life Stage

- All
- Children
- Young Adults
- Adults
- Older Adults

### Filter by Race

- All
- Hispanic/Latino
- Black
- White
- Asian
- Other

### Filter by Dis/ability

- All
- People with Disabilities

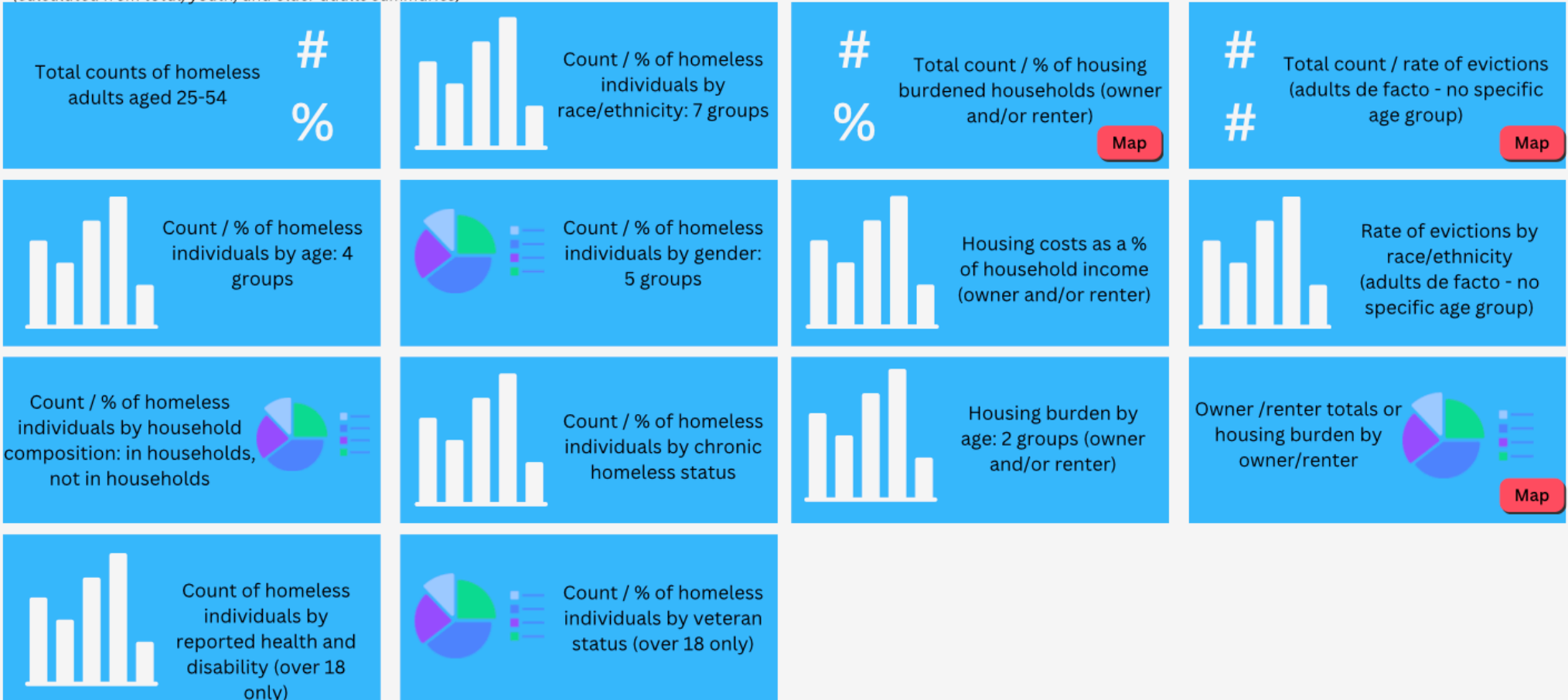
Children & Families	Economic	Housing	Physical Health	Mental Health	Food	Education	Criminal Justice
---------------------	----------	---------	-----------------	---------------	------	-----------	------------------

#### Homelessness: Adults Aged 25-54

*Los Angeles County Homeless Services Authority, data for LA Continuum of Care (calculated from total, youth, and older adults summaries)*

#### Housing Insecurity Variables: Adults Aged 25-64

*American Community Survey, US Housing and Urban Development, Eviction Lab Princeton*



### Filter by Life Stage

- All
- Children
- Young Adults
- Adults
- Older Adults

### Filter by Race

- All
- Hispanic/Latino
- Black
- White
- Asian
- Other

### Filter by Dis/ability

- All
- People with Disabilities

Children & Families	Economic	Housing	Physical Health	Mental Health	Food	Education	Criminal Justice
---------------------	----------	---------	-----------------	---------------	------	-----------	------------------

<b>Homelessness: Adults Aged 55+</b> <i>Los Angeles County Homeless Services Authority, data for LA Continuum of Care</i>	<b>Housing Insecurity Variables: Householder 65+</b> <i>American Community Survey, US Housing and Urban Development, Eviction Lab Princeton</i>
--	--

Total counts of homeless adults aged 55+ # %	Count / % of homeless individuals by race/ethnicity: 7 groups 	# % Total count / % of housing burdened households (owner and/or renter) <a href="#" style="background-color: #e91e63; color: white; padding: 2px 5px; border-radius: 5px;">Map</a>	# # Total count / rate of evictions (adults de facto - no specific age group) <a href="#" style="background-color: #e91e63; color: white; padding: 2px 5px; border-radius: 5px;">Map</a>
Count / % of homeless individuals by age: 6 groups 	Count / % of homeless individuals by gender: 5 groups 	Housing costs as a % of household income (owner and/or renter) 	Rate of evictions by race/ethnicity (adults de facto - no specific age group) 
Count / % of homeless individuals by household composition: in households, not in households 	Count / % of homeless individuals by chronic homeless status 	Owner / renter totals or housing burden by owner/renter  <a href="#" style="background-color: #e91e63; color: white; padding: 2px 5px; border-radius: 5px;">Map</a>	
Count of homeless individuals by reported health and disability (over 18 only) 	Count / % of homeless individuals by veteran status (over 18 only) 		



### Filter by Life Stage

- All
- Children
- Young Adults
- Adults
- Older Adults

### Filter by Race

- All
- Hispanic/Latino
- Black
- White
- Asian
- Other

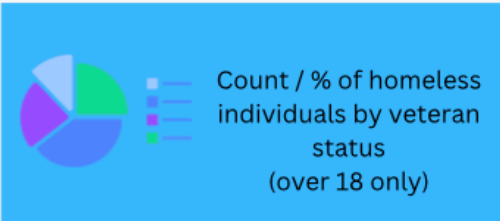
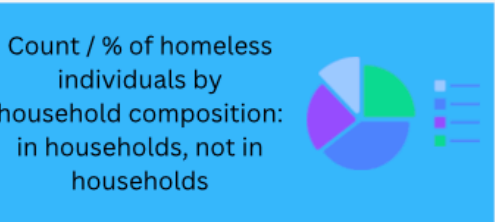
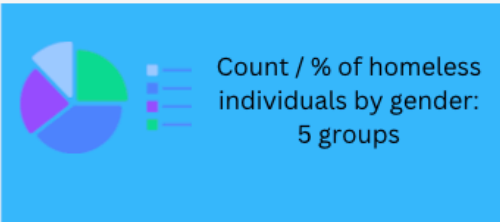
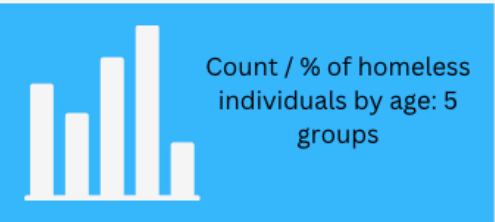
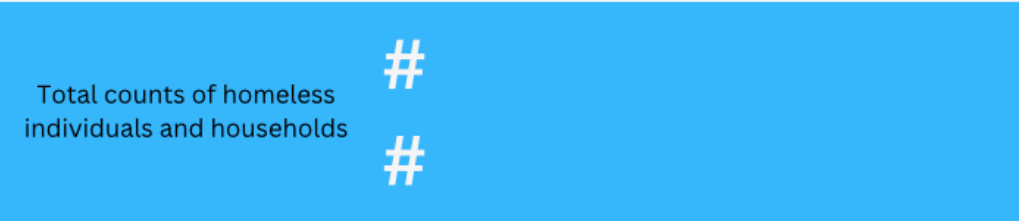
### Filter by Dis/ability

- All
- People with Disabilities

Children & Families	Economic	Housing	Physical Health	Mental Health	Food	Education	Criminal Justice
---------------------	----------	---------	-----------------	---------------	------	-----------	------------------

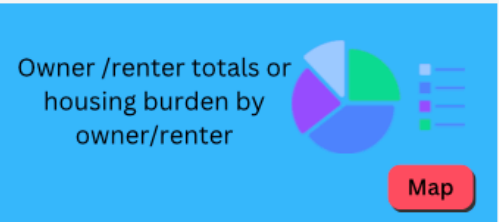
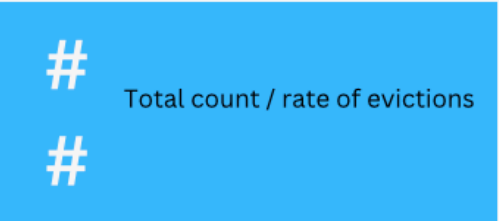
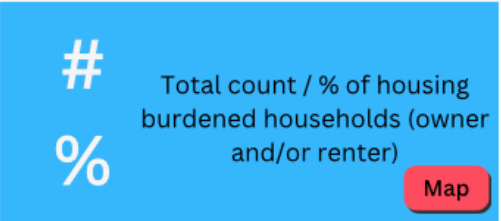
#### Homelessness: Hispanic/Latino Individuals

*Los Angeles County Homeless Services Authority, data for LA Continuum of Care*



#### Housing Insecurity Variables: Hispanic/Latino Householder

*American Community Survey, US Housing and Urban Development, Eviction Lab Princeton*



### Filter by Life Stage

- All
- Children
- Young Adults
- Adults
- Older Adults

### Filter by Race

- All
- Hispanic/Latino
- Black
- White
- Asian
- Other

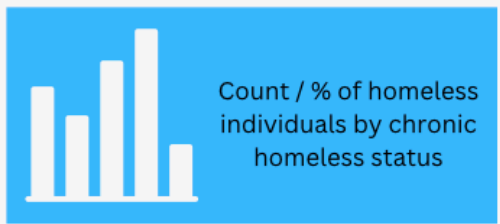
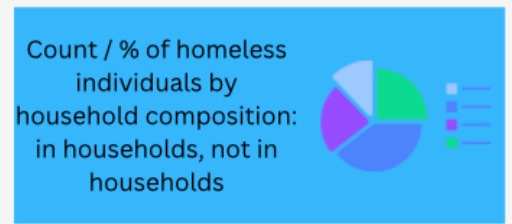
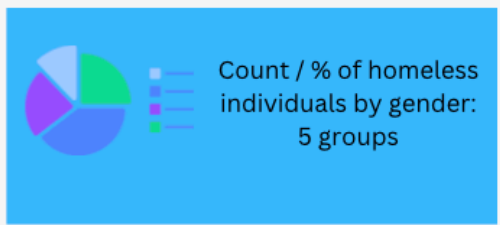
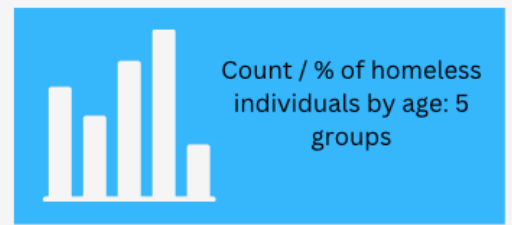
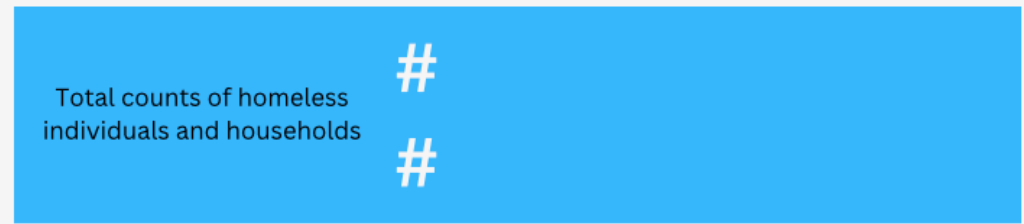
### Filter by Dis/ability

- All
- People with Disabilities

Children & Families	Economic	Housing	Physical Health	Mental Health	Food	Education	Criminal Justice
---------------------	----------	---------	-----------------	---------------	------	-----------	------------------

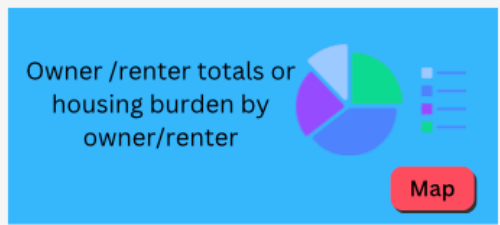
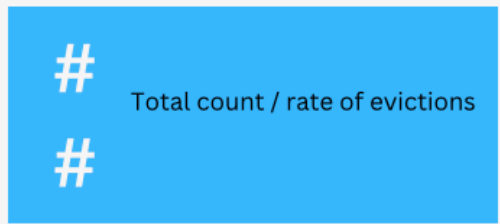
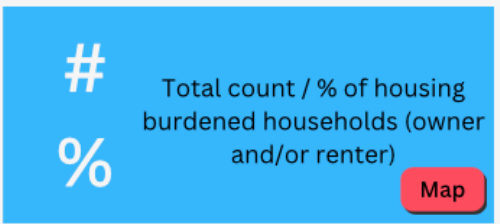
#### Homelessness: Black Individuals

*Los Angeles County Homeless Services Authority, data for LA Continuum of Care*



#### Housing Insecurity Variables: Black Householder

*American Community Survey, US Housing and Urban Development, Eviction Lab Princeton*



**Filter by Life Stage**

- All
- Children
- Young Adults
- Adults
- Older Adults

**Filter by Race**

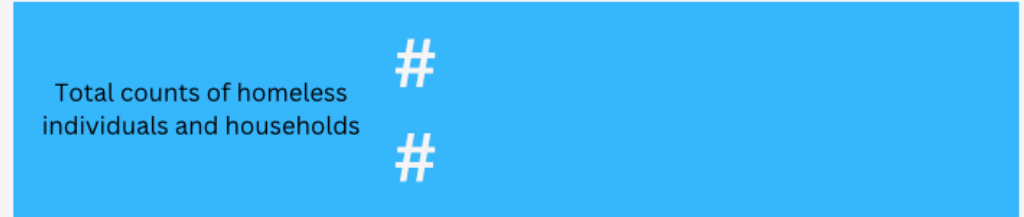
- All
- Hispanic/Latino
- Black
- White
- Asian
- Other

**Filter by Dis/ability**

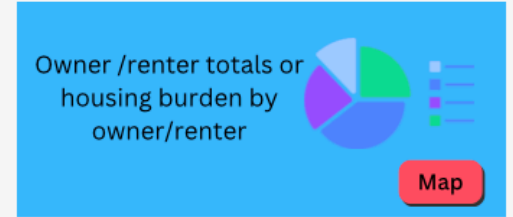
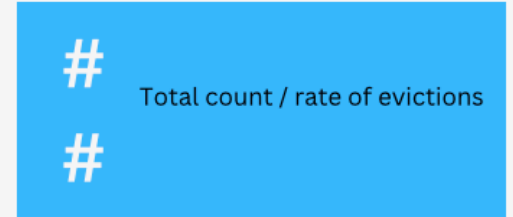
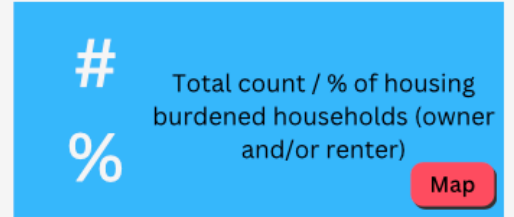
- All
- People with Disabilities

Children & Families	Economic	Housing	Physical Health	Mental Health	Food	Education	Criminal Justice
---------------------	----------	---------	-----------------	---------------	------	-----------	------------------

**Homelessness: White Individuals**  
*Los Angeles County Homeless Services Authority, data for LA Continuum of Care*



**Housing Insecurity Variables: White Householder**  
*American Community Survey, US Housing and Urban Development, Eviction Lab Princeton*



### Filter by Life Stage

- All
- Children
- Young Adults
- Adults
- Older Adults

### Filter by Race

- All
- Hispanic/Latino
- Black
- White
- Asian
- Other

### Filter by Dis/ability

- All
- People with Disabilities

Children & Families	Economic	Housing	Physical Health	Mental Health	Food	Education	Criminal Justice
---------------------	----------	---------	-----------------	---------------	------	-----------	------------------

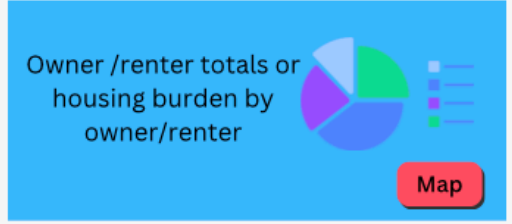
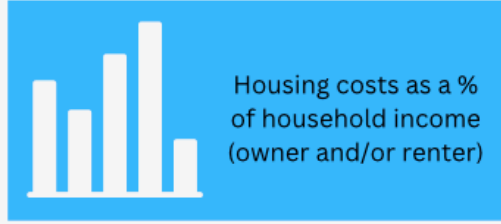
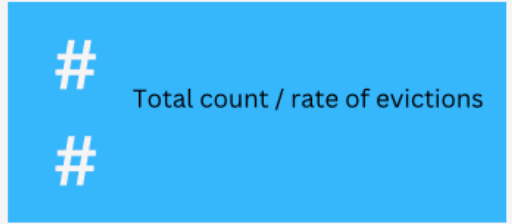
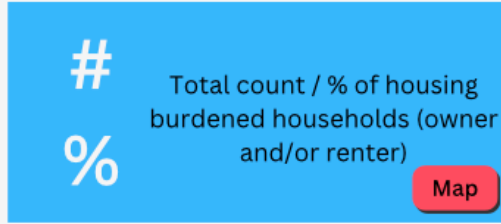
#### Homelessness: Asian Individuals

*Los Angeles County Homeless Services Authority, data for LA Continuum of Care*



#### Housing Insecurity Variables: Asian Householder

*American Community Survey, US Housing and Urban Development, Eviction Lab Princeton*





### Filter by Life Stage

- All
- Children
- Young Adults
- Adults
- Older Adults

### Filter by Race

- All
- Hispanic/Latino
- Black
- White
- Asian
- Other

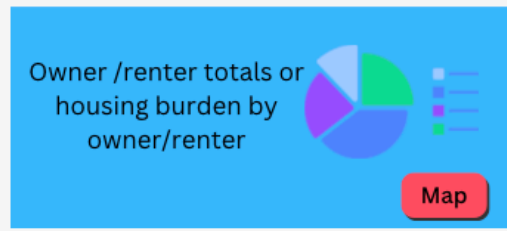
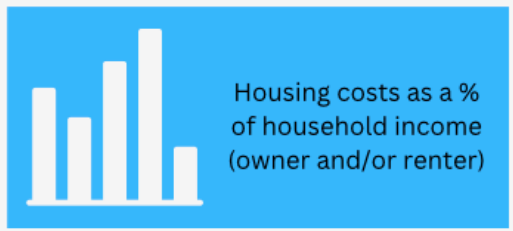
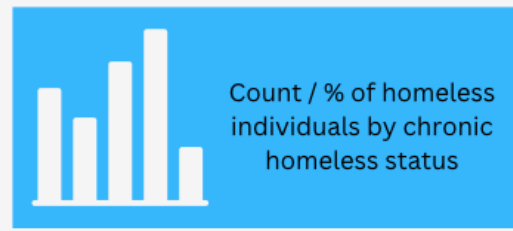
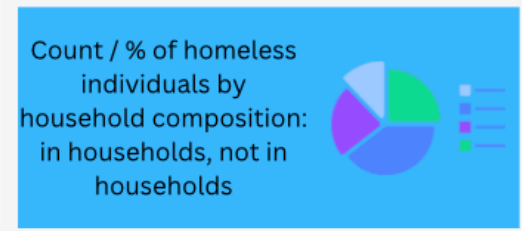
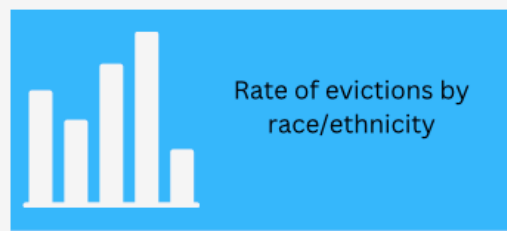
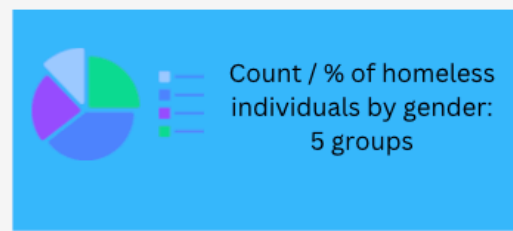
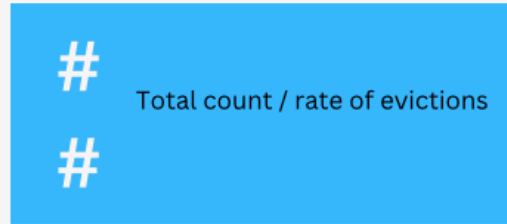
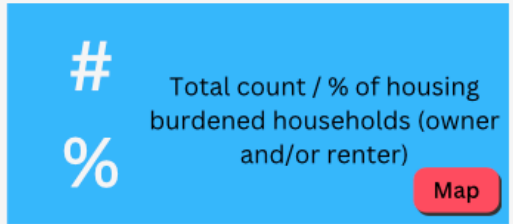
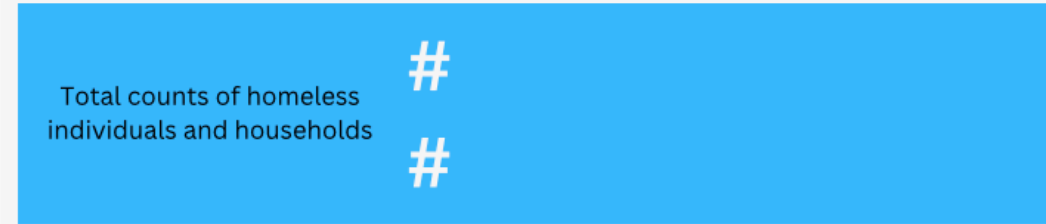
### Filter by Dis/ability

- All
- People with Disabilities

Children & Families	Economic	Housing	Physical Health	Mental Health	Food	Education	Criminal Justice
---------------------	----------	---------	-----------------	---------------	------	-----------	------------------

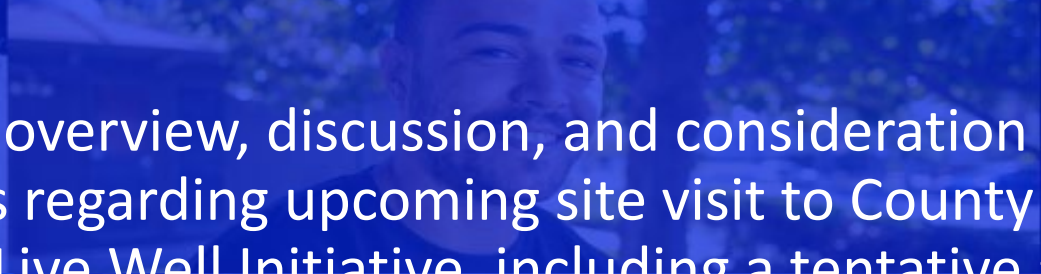
#### Homelessness: American Indian / Alaska Native Individuals *Los Angeles County Homeless Services Authority, data for LA Continuum of Care*

#### Housing Insecurity Variables: Other Races Householder *American Community Survey, US Housing and Urban Development, Eviction Lab Princeton*

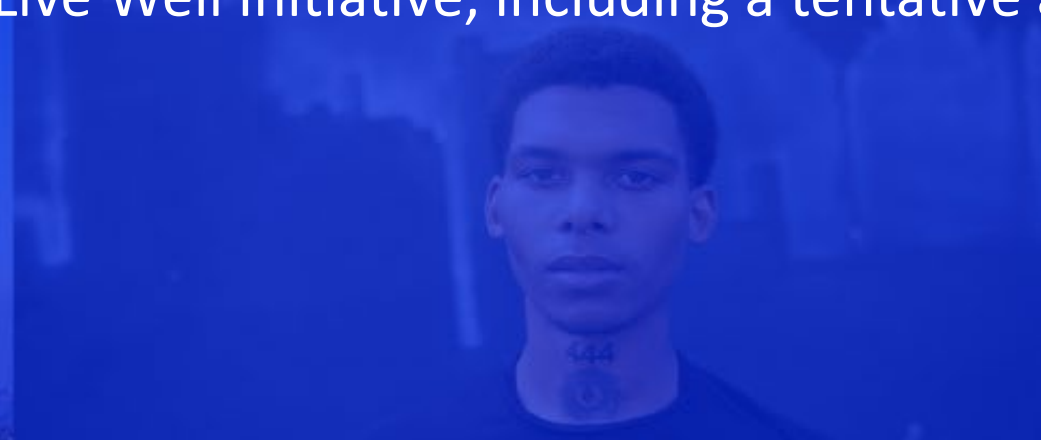




# ITEM 9



Brief overview, discussion, and consideration of necessary actions regarding upcoming site visit to County of San Diego's Live Well Initiative, including a tentative agenda.



# San Diego County Live Well Initiative Site Visit

DATE: Friday, August 11, 8:30 AM to 4:30 PM

LOCATION: North Coastal Live Well Center;  
3708 Ocean Ranch Blvd, Oceanside, CA 92056

**ARDI staff will reach out individually to members confirm and finalize attendance** (SD staff will be working to ensure complementary representation from corresponding agencies if possible)

**Based on survey responses, group transportation (i.e., a bus) will not be provided to and from Oceanside.** However, please contact ARDI staff if you are interested in carpooling together or require individual transportation arrangements.

## **PLANNED AGENDA (Page 1 of 2)**

8:30-9AM arrival, light refreshments

### **1. County of San Diego Overview (9-10:15 AM):**

Countywide structure, GMS, functional threading, leveraging funding between groups/depts for broader goals, management model, role of BOS

Planned panelists: CAO's Office, COSD Strategic Planning leads, Economic Development and Government Affairs

**(15 minute break)**

### **2. Health and Human Services Agency Overview (10:30 AM - Noon):**

Agency service delivery structure, history and evolution, cross dept threading, no wrong door, regional model; contracting; role of advisory boards

Planned panelists: Health and Human Services Agency senior leadership, community operations, contracts support

**(Lunch across the street or ordered in: 12-1 PM)**

# San Diego County Live Well Initiative Site Visit

## PLANNED AGENDA (Page 2 of 2)

**3. A shared Vision - *Live Well San Diego (1-2:15 PM)*:** LWSD rolled out as the focus for prevention, collaboration, community leadership engagement, partner engagement, population health, collective impact, LWOW; how it started, how it evolved

Planned panelists:

- HHS Office of Strategy and Innovation
- Live Well indicators / community health statistics and health equity
- Office of Business Intelligence
- Data sharing

**(15 minute break)**

**4. Use Cases to Highlight Collaborative Service Delivery Models (2:30 - 4:30 PM):** Evolution to impact service delivery e.g. Live Well Centers, co-location with County depts and CBOs together, no wrong door; serving same families, wrap around (CSS, Probation, OMVA), OERJ launch/focus incl indicators, data sharing across groups

Planned panelists

- Office of Equity and Racial Justice
- Child Support Services
- HHS Self Sufficiency Services
- Probation
- Alternatives to Incarceration
- CalAIM, BHS, or other data sharing models

**(Adjourn)**





ITEM 10

# Public Comment

To address the Task Force and provide public comment on **Task Force-related subject matters**, please use the \*raise hand\* feature. Use the same feature to lower your hand after your comments.

If you are calling in by phone, dial \*9 on the phone's dial pad to raise your hand. Dial \*9 again to lower your hand.

*Each speaker is allowed up to 90 seconds.*

# PUBLIC COMMENT

Each speaker is allowed up to 90 seconds.

30

60

90

TIMER





ITEM 11

# ADJOURNMENT

Upcoming meeting dates (all Fridays at 10am to 12:30pm)

- July 28
- August 25
- September 29
- October 27
- November 17

All future meetings will be held hybrid with Zoom teleconferencing  
In-person location will be at 510 S Vermont Ave, Los Angeles, CA 90020