

**S-1 Board of Supervisors Briefing
Dr. Barbara Ferrer, Director
Los Angeles County Department of Public Health
Tuesday, November 2nd, 2021**



covid19.lacounty.gov

11/2/2021

Current Status
As of November 1st, 2021

Deaths Reported Today	7
Total Deaths	26,644
Cases Reported Today	990
Total Cases	1,494,119
Total People Tested	9,070,443
Daily Test Positivity Rate	0.83%
7-Day Daily Average Case Rate*	8.8
7-Day Cumulative Case Rate (per CDC)	78.8
Currently Hospitalized	672

*As of 10/29/21



covid19.lacounty.gov

11/2/2021

Proportion of LAC Residents Vaccinated by Age Group as of October 28th, 2021

	≥1 Dose	Fully Vaccinated
% LAC Residents 65+	94%	85%
% LAC Residents 16+	81%	73%
% LAC Residents 12+	80%	72%
% LAC Residents 12-17	73%	64%
% of 10.3 million LAC residents	69%	62%

537,260 additional/booster doses have been administered by
LAC Providers to LAC & Non-LAC Residents



covid19.lacounty.gov

11/2/2021

Percent of Eligible People* Who Have Received Additional/Booster Pfizer Doses by Age Group and HPI+ ZIP Code Status September 24th – October 24th, 2021

% of Age Group Who Have Received Additional/Booster Shots

	12+ population	12-64 population	≥ 65 population
HPI+ ZIP Codes (Hardest Hit LAC Neighborhoods)	2.1%	1.0%	9.0%
Other LAC ZIP Codes	4.1%	2.1%	13.4%
Totals	3.0%	1.5%	11.4%

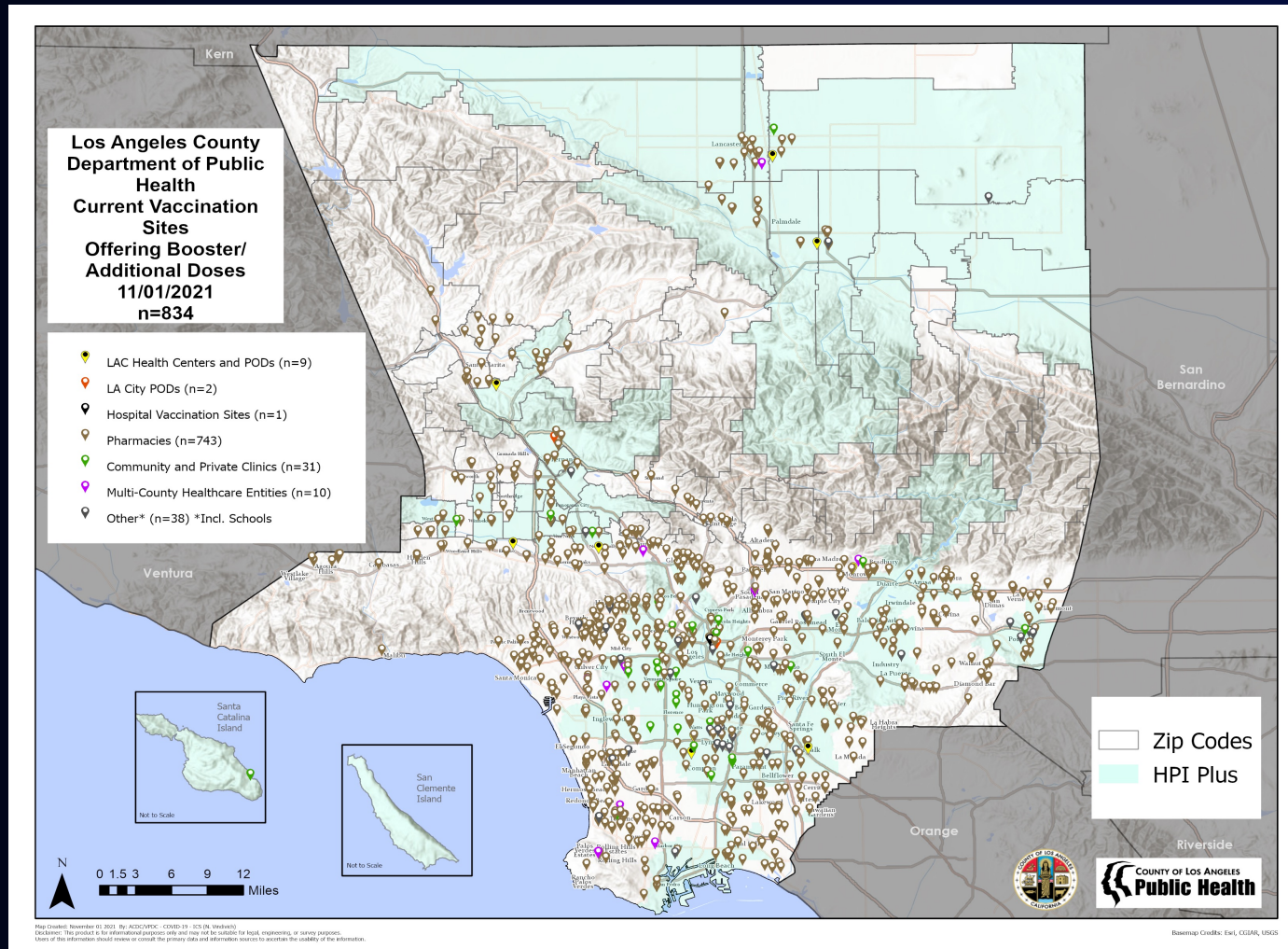
*Those who completed a two-dose Pfizer/Moderna series by 3/24/21, and one dose of J&J by 7/24/21.



covid19.lacounty.gov

11/2/2021

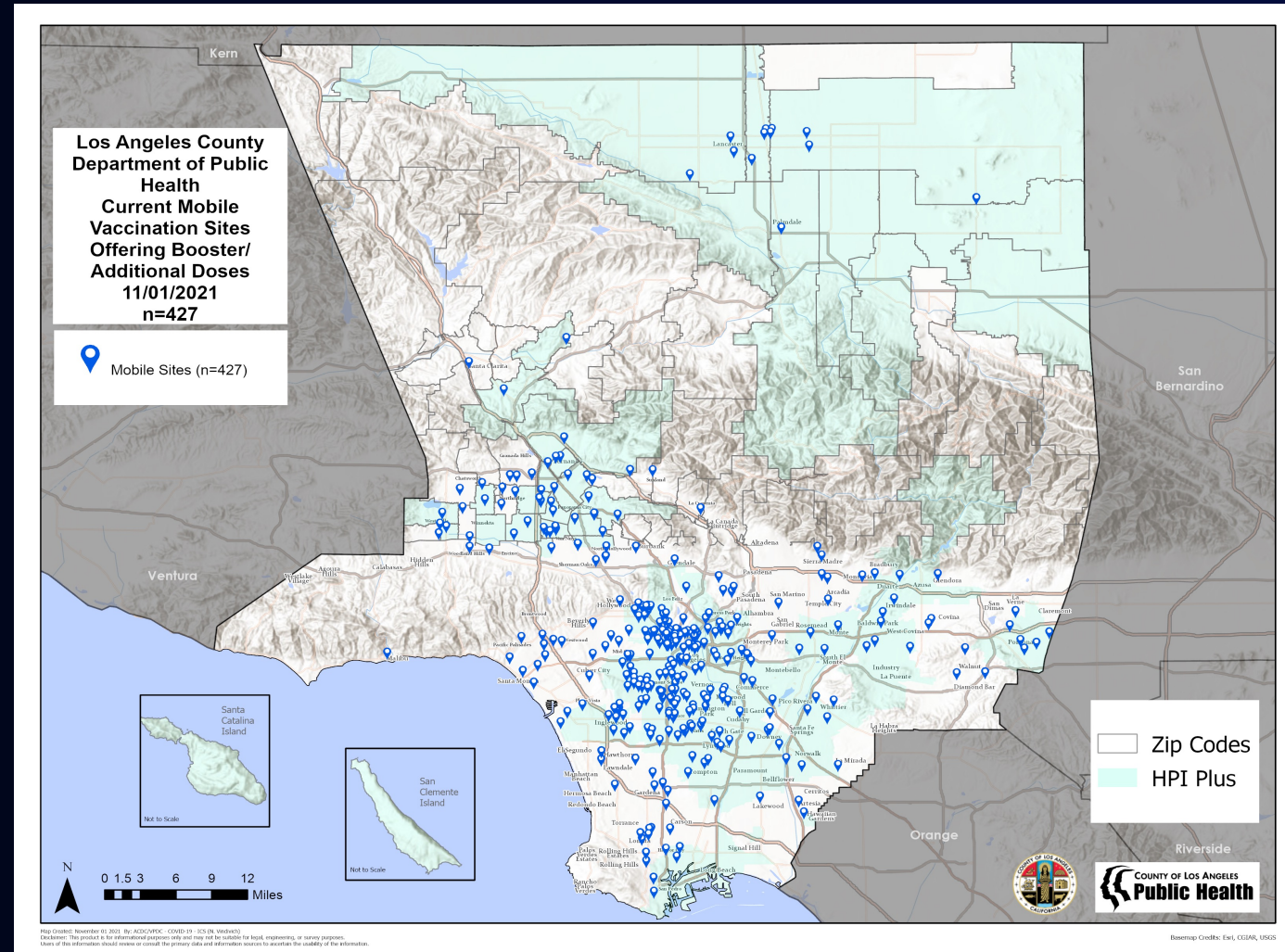
Fixed Vaccination Sites Providing Booster Doses



covid19.lacounty.gov

11/2/2021

Mobile Vaccination Sites Providing Booster Doses



covid19.lacounty.gov

11/2/2021

Boosters for Skilled Nursing Facility Residents

Booster administration status	N	(%)
Clinic completed or vaccine administered	29	(9%)
Scheduled for clinic/vaccine delivery	69	(20%)
Assessment complete/pending scheduling of clinic	79	(23%)
Assessment in progress	143	(42%)
SNF response/contact pending	21	(6%)
N/A (pediatric facility)	1	(0%)
Total Skilled Nursing Facilities	342	



Boosters for Homebound Individuals

Homebound people:

- Vaccinated in collaboration with mobile vaccine partners
- 6,627 homebound people vaccinated as of October 19th, 2021
- Referrals can be made on our website ([VaccinateLACounty.com](https://vaccinate.lacounty.gov)) or by calling our call center at **833-540-0473**

The screenshot shows the 'COVID-19 Vaccine' page on the County of Los Angeles Public Health website. The header includes a 'Translate' button, an 'A-Z Index', and a 'Font Size' selector. Below the header, there are links for 'For Healthcare Providers' (COVID-19 Hub, Vaccine Hub) and 'For Everyone' (VaccinateLACounty.com, More resources). The main heading is 'COVID-19 Vaccine' with the subheading 'How to Get Vaccinated'. A sidebar on the left contains a list of links: 'Before you begin', 'Learn about the vaccines', 'In-home vaccination' (highlighted), 'Paratransit & free rides', '12-17 year olds', 'Doses for immunocompromised', 'Booster doses', 'Getting a 2nd dose', 'Preparing for your visit', and 'After your visit'. The main content area states that home-bound individuals can request an in-home vaccination. It lists two ways for Los Angeles County residents to apply: calling the DPH Vaccine Call Center (833-540-0473) or filling out an online request form. It also mentions that Long Beach residents can apply for in-home vaccination via a link, and Pasadena residents can call the Pasadena Citizen Service Center (626-744-7311). A list of available languages for flyers is provided: English, Español, 简体中文, 繁體中文, العربية, Հայերեն, বাংলা, 日本語, 한국어, Русский, Tiếng Việt, فارسی, and Tagalog. A note states that nurses are fanning out across the county to make vaccinations available to homebound residents. Two video thumbnails are shown: 'Vaccinating homebound residents from Los Angeles County Newsroom' and 'In-Home Vaccinations: Beverly Bicknell from Los Angeles County Newsroom'. A 'Need Help?' button is located at the bottom right.



covid19.lacounty.gov

11/2/2021

LA County* Pediatric Cases, Hospitalization and Deaths

March 1, 2020 – October 30, 2021

Pediatric Age Group	Cases	Hospitalized	Deaths
0 – 4 Years	37,284	635	1
5 – 11 Years	79,822	377	1
12 – 17 Years	89,893	747	5

*Excludes LB and PAS.

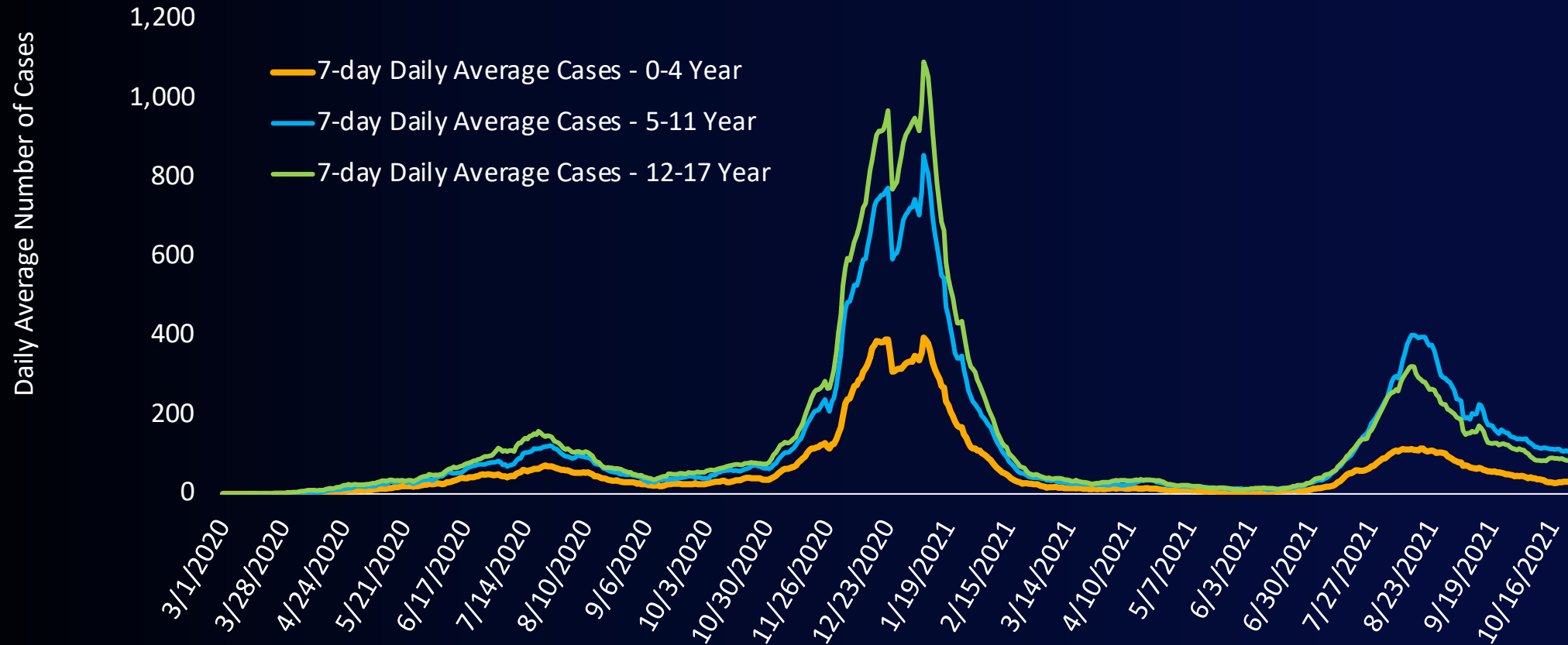


covid19.lacounty.gov

11/2/2021

Pediatric Cases by Episode Date

March 1st, 2020 – October 25th, 2021



covid19.lacounty.gov

11/2/2021

Vaccinating Children Aged 5-11 in LAC

How many children will be eligible?

- There are 900,000 children 5-11 years old in LAC

Is the pediatric vaccine the same as the adult vaccine?

- The Pfizer pediatric dose size different from adult/teen vaccine dose size (10mcg vs. 30mcg), but the dosing schedule is the same (2 doses, 21 days apart). Packaging for each is different.

What do children need to bring with them to get vaccinated?

- Consent form signed by an adult responsible for the child
- At some vaccination sites (including DPH sites), children <16 must be accompanied by an adult

Will we have enough vaccine for everyone?

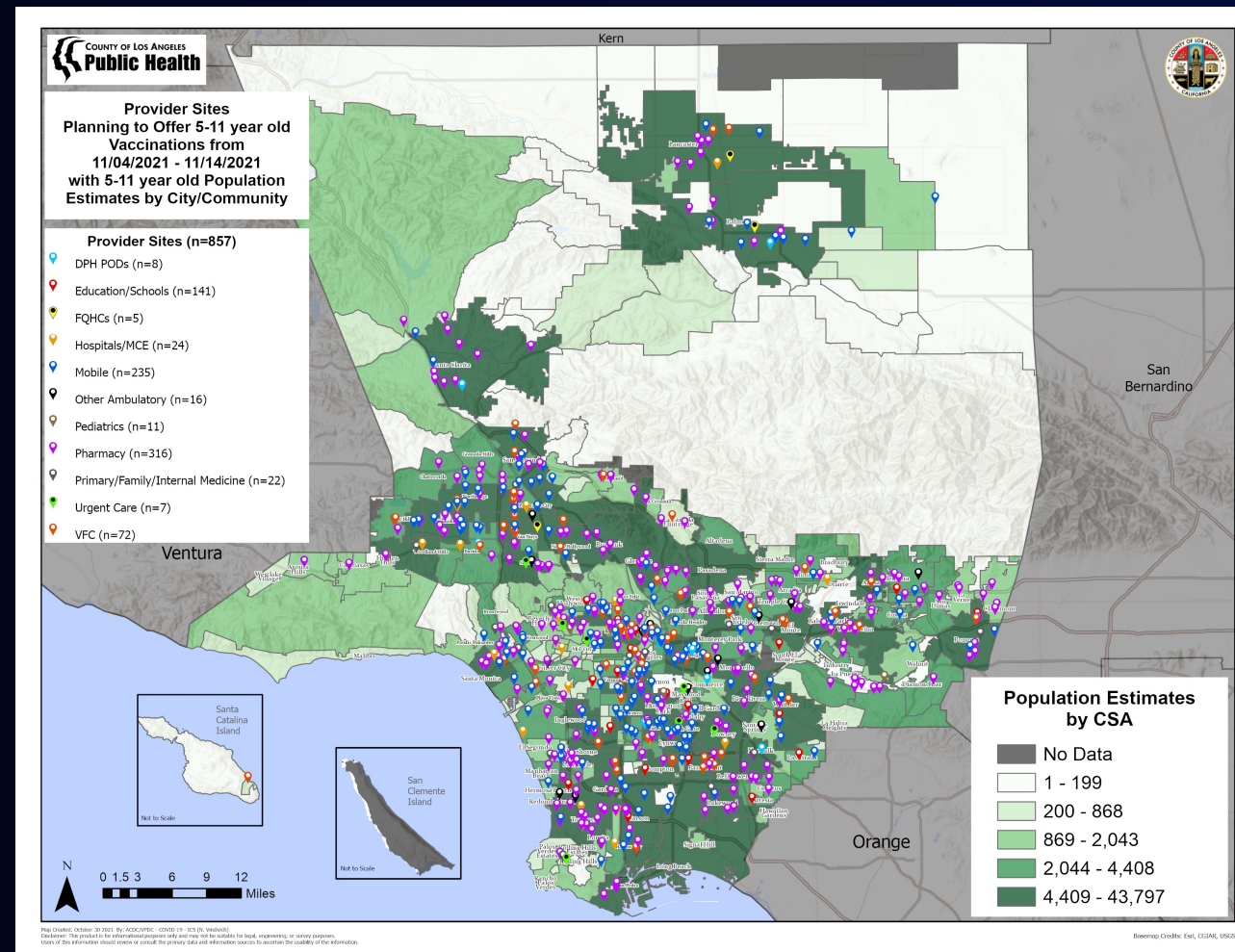
- LAC pediatric vaccine providers receiving ~298,000 doses this week
- Doses allocated on a pro-rated basis; we do not anticipate scarcity



covid19.lacounty.gov

11/2/2021

LAC's Plan for Vaccinating Children Aged 5-11: Pediatric Vaccination Sites



covid19.lacounty.gov

11/2/2021

Criteria for Lifting Masking Requirements at Events and Establishments

Outdoor Mega Events (>10,000 people)

LAC metrics must show:

- 3 consecutive weeks \leq moderate transmission (<50 weekly cases/100K)
 - 3 consecutive weeks of hospitalizations low and stable (<600 daily)
 - $\geq 80\%$ residents 12+ fully vaccinated
 - No emerging reports of significantly circulating VOCs
-

Indoor Events/Establishments (<1,000 people)

Site requirements:

- A vaccination verification process must be in place
- All employees and customers must be fully vaccinated

LAC metrics must show:

- 3 consecutive weeks \leq moderate transmission
 - 3 consecutive weeks of hospitalizations low and stable
 - $\geq 80\%$ residents 12+ fully vaccinated
 - No emerging reports of significantly circulating VOCs
-

Indoor masking will still be mandatory on public transit and in transportation hubs, at schools, childcare, youth settings; healthcare settings; in correctional facilities; homeless/emergency shelters and heating/cooling centers; indoor mega events (1,000+).



covid19.lacounty.gov

11/2/2021

Planning Ahead for Safe Thanksgiving Gatherings

- Get vaccinated now
- Stay local until everyone in your household is fully vaccinated
- Gather outdoors if possible
- Keep gatherings small
- Take extra precautions if gathering with high-risk people or people from other parts of the country
 - Avoid crowded spaces/places prior to holidays
 - Get tested in the days before meeting



covid19.lacounty.gov

11/2/2021