



Los Angeles County Vision Zero Initiative

Los Angeles County Commission on Disabilities Meeting

April 17, 2019



What is Vision Zero?

Vision Zero is a data-driven, traffic safety initiative to eliminate traffic deaths and severe injuries.





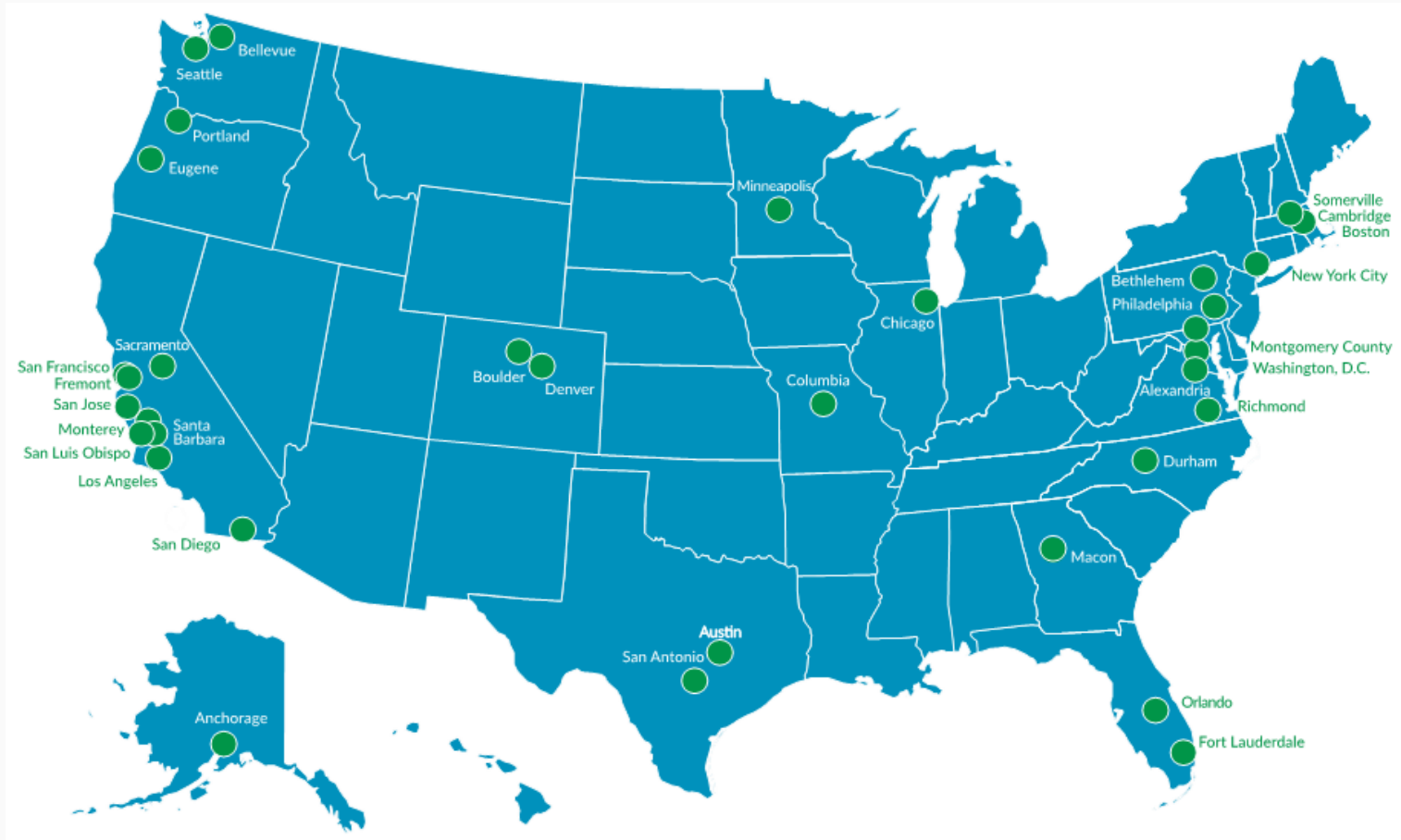
What is Vision Zero?

A multidisciplinary approach to enhancing traffic safety.





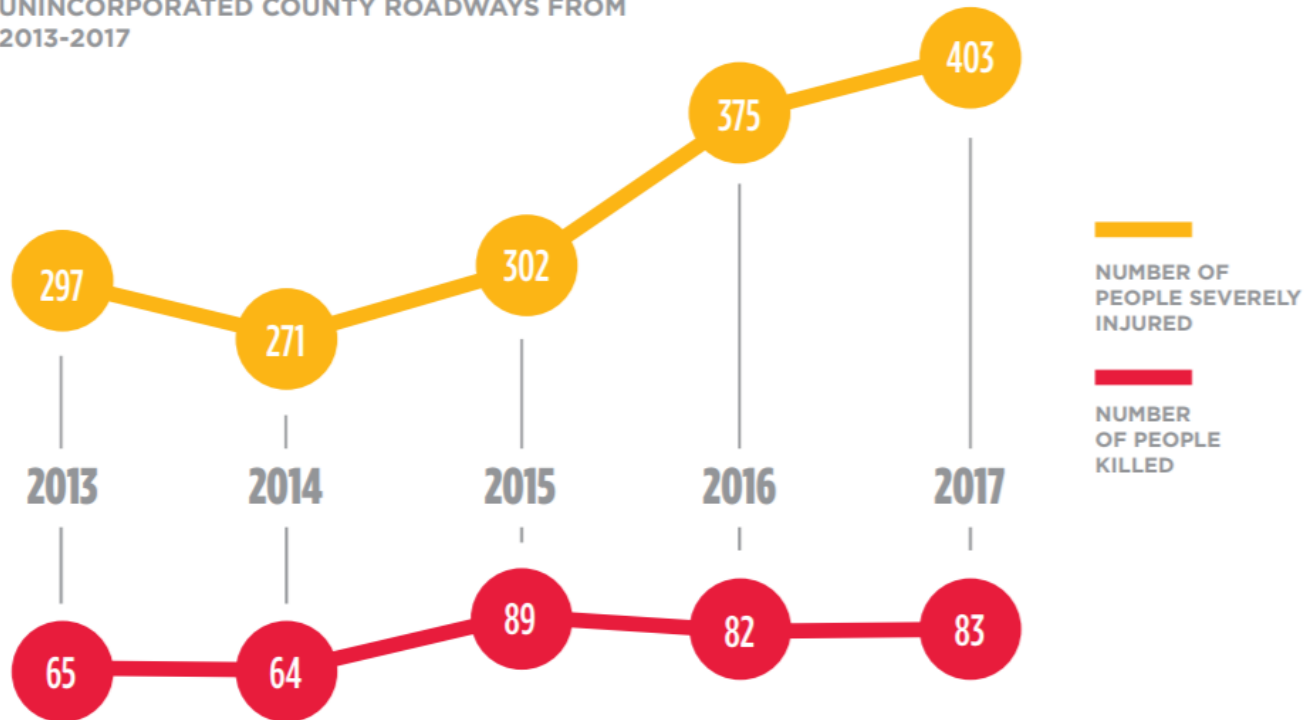
Vision Zero Cities





Fatal and Severe Injury Collisions (2013-2017)

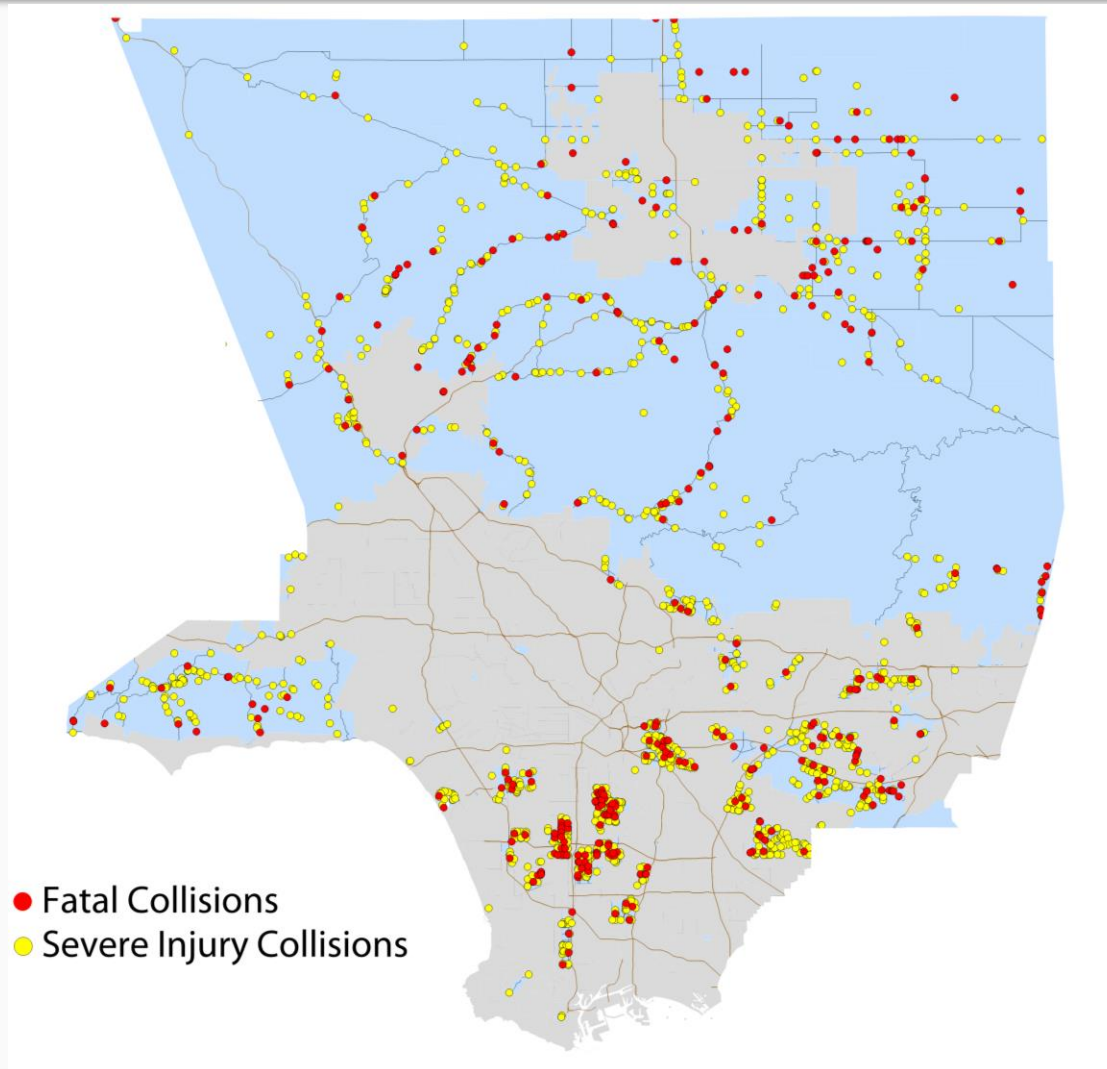
ANNUAL NUMBER OF TRAFFIC-RELATED
FATALITIES AND SEVERE INJURIES ON
UNINCORPORATED COUNTY ROADWAYS FROM
2013-2017



Source: Los Angeles County Public Works' Collision Database, collisions occurring between 2013 and 2017 for unincorporated County roadways



Fatal and Severe Injury Collisions (2013-2017)





Partnership Structure

Public Health & Public Works

County
Department
Partners

Community
Partners

Regional
Partners



Vision Zero Five-Year Action Plan

- **Contents of the Action Plan (5-Year)**
 - Sets goal of eliminating traffic deaths by 2035
 - Data analysis results
 - Approximately 200 corridors experiencing concentration of fatal and severe-injury collisions
 - Top 20 Collision Concentration Corridors
 - ~65 Actions to enhance traffic safety



DRAFT

FEBRUARY 2019



Collision Statistics and Insights

Primary Contributing Factor

- **Unsafe Speed** is the primary contributing factor of **19 percent** of collisions that result in fatal or severe injury

EIGHTY-FIVE PERCENT (85%) OF FATAL AND SEVERE INJURY COLLISIONS BETWEEN 2013 AND 2017 WERE CAUSED BY SIX PRIMARY FACTORS

Primary Collision Factors	Percent of Fatal and Severe Injury Collisions
Unsafe speed	19%
Improper turning	18%
Driving or bicycling under the influence of alcohol or drugs	17%
Driver failing to yield to another driver	14%
Pedestrian violation	10%
Failure to yield to traffic controls	7%
Total	85%

Source: TIMS, Safe Transportation Research and Education Center, University of California, Berkeley. 2018. Data query from 1/1/13 through 12/31/17 for Unincorporated Los Angeles County, excluding State Highways.



Speed Matters

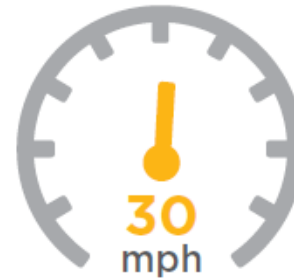


WHY SPEED MATTERS: WHEN HIT AT HIGHER SPEEDS, PEDESTRIANS ARE MUCH LESS LIKELY TO SURVIVE A COLLISION²



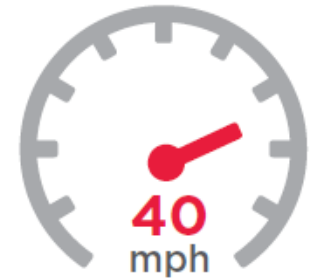
10%

chance of pedestrian fatality or severe injury



50%

chance of pedestrian fatality or severe injury



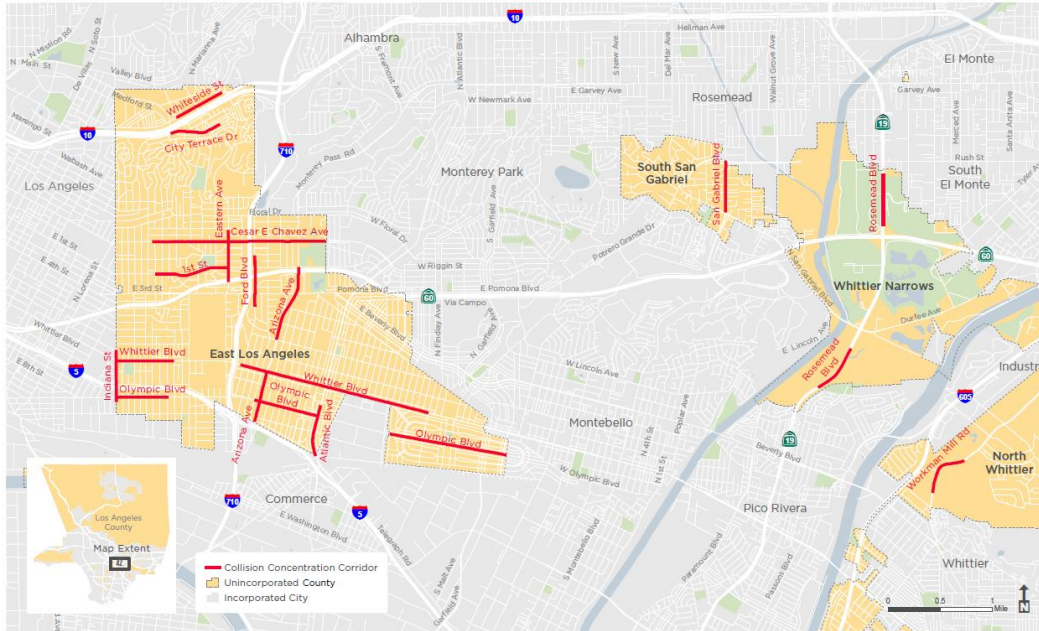
90%

chance of pedestrian fatality or severe injury

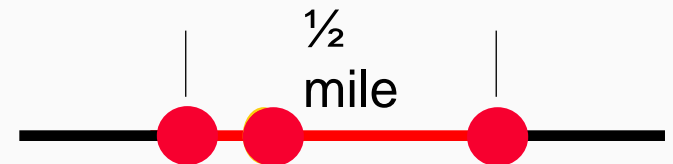


Collision Concentration Corridors

COLLISION CONCENTRATION CORRIDORS - INSET 42

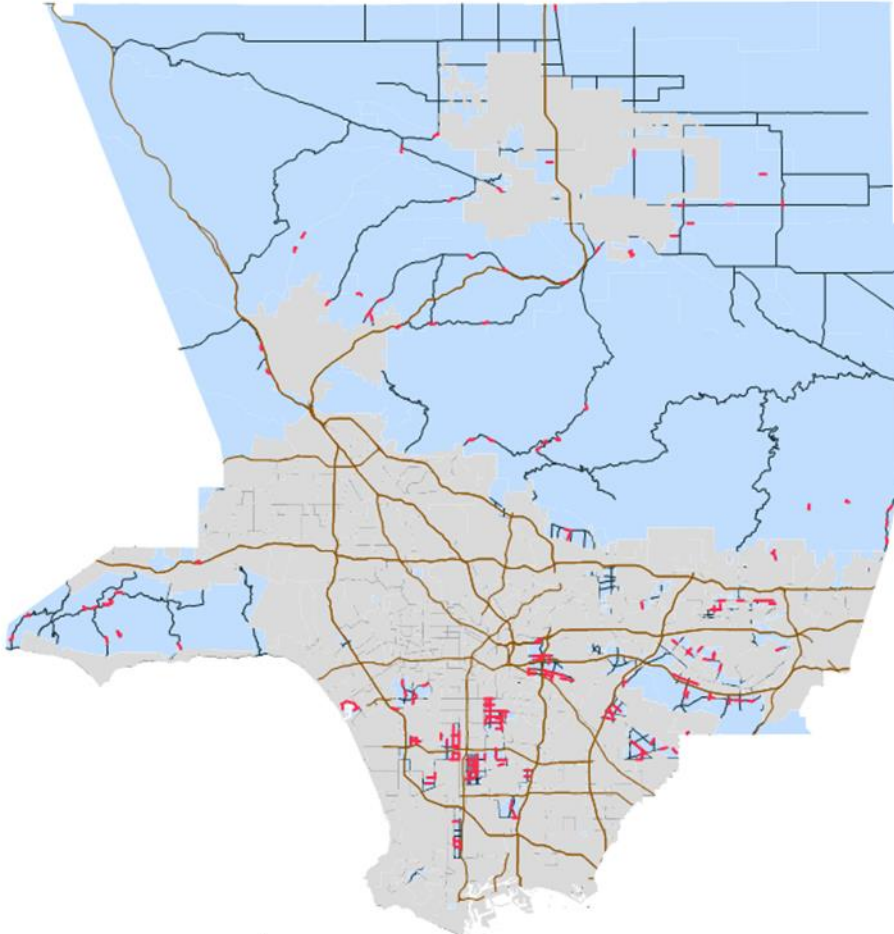


- Any half-mile roadway segment that contained 3 or more fatal or severe-injury collisions within the last 5 years (2013 - 2017)





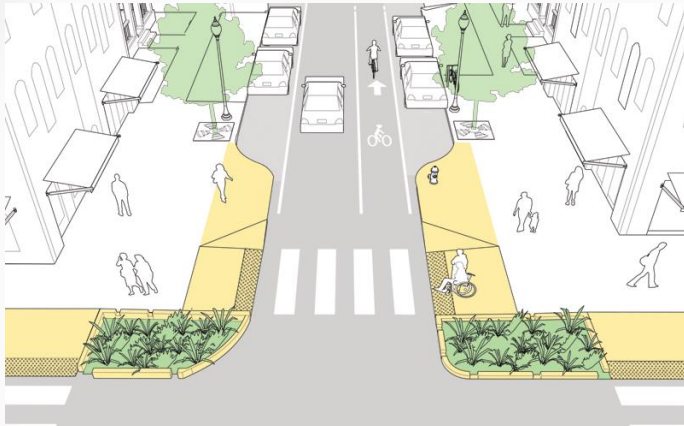
Collision Concentration Corridors



- **50 percent** of traffic fatality and severe injury collisions occurred on **3.7 percent** (or 125 miles) of Unincorporated County roadways



Engineering Countermeasures



Curb Extensions and High Visibility Crosswalks



Flashing Beacons



Left turn arrows



Programmatic Countermeasures



Safe Routes to School Program
Safe Routes for Seniors
Education and Advertising Campaigns
Focused Enforcement



Vision Zero Action Plan



DRAFT

FEBRUARY 2019

- Online - VisionZeroLACounty.com
- Email– VisionZero@pw.lacounty.gov
- Phone – 1-833-VZ4-LACO
(1-833-894-5226)
- **Mailing Address**
Los Angeles County Public Works
Attn: Traffic Safety and Mobility (Vision Zero)
P.O. Box 1460
Alhambra, CA 91802-1460



Questions?



Contact:

Matthew Dubiel, Senior Civil Engineer

Los Angeles County Public Works

mdubiel@pw.lacounty.gov

(626) 300-4795

Jean Armbruster, Senior Staff Analyst

Los Angeles County Department of Public Health

jarmbruster@dph.lacounty.gov

(213) 351-1907