



we all need
PARKS
for healthy, thriving and engaged communities

LOS ANGELES COUNTYWIDE COMPREHENSIVE PARKS & RECREATION NEEDS ASSESSMENT

MAY 3, 2016

Los Angeles County
Department of Parks & Recreation

ACKNOWLEDGMENTS

Many individuals and organizations contributed to the successful completion of the Los Angeles Countywide Parks and Recreation Needs Assessment. The efforts of those noted below are especially appreciated; please refer to the main report for more detailed acknowledgments.

LOS ANGELES COUNTY BOARD OF SUPERVISORS

- » Hilda L. Solis, 1st District
- » Mark Ridley-Thomas, 2nd District
- » Sheila Kuehl, 3rd District
- » Don Knabe, 4th District
- » Michael D. Antonovich, 5th District

SUPERVISORIAL DISTRICT STAFF

- » Javier Hernandez, 1st District
- » Teresa Villegas, 1st District
- » Lacey Johnson, 2nd District
- » Karly Katona, 2nd District
- » Maria Chong-Castillo, 3rd District
- » Erin Stibal, 4th District
- » Sussy Nemer, 5th District
- » David Perry, 5th District

LOS ANGELES COUNTY PARKS AND RECREATION COMMISSION

- » Ed P. Reyes, 1st District
- » Mayisha Akbar, 2nd District
- » Bettina Duval, 3rd District
- » John Hsu, 4th District
- » William J. Korek, 5th District

LOS ANGELES COUNTY DEPARTMENT OF PARKS AND RECREATION STAFF

- » John Wicker, Director of Parks and Recreation
- » Norma E. Garcia, Deputy Director, Planning and Development Agency
- » Rita Robinson, Project Director
- » Clement Lau, Departmental Facilities Planner II
- » Sheela Kleinknecht, Park Planner
- » Over 100 staff members

LOS ANGELES COUNTY REGIONAL PARK AND OPEN SPACE DISTRICT

- » Jane Beesley, District Administrator
- » Warren Ontiveros, Administration Section Manager

STEERING COMMITTEE

In memoriam: Steering Committee member Mary Kaufman, avid trail supporter and enthusiast.

- » Greg Alaniz
- » Jane I. Beesley
- » Alina Bokde
- » Brad Bolger
- » William Warren Brien
- » John Bwarie
- » Scott Chan
- » Maria Chong-Castillo

- » Kimel Conway
- » Cheryl Davis
- » Reyna Diaz
- » Bettina Duval
- » Belinda V. Faustinos
- » Norma E. Garcia
- » Phil Hester
- » Michael Hughes
- » Lacey Johnson
- » John Jones
- » Amy Lethbridge
- » James Lott
- » Linda Lowry
- » Michael McCaa
- » Sandra McNeill
- » Martha Molina-Aviles
- » Veronica Padilla
- » Ronda Perez
- » David Perry
- » Adriana Pinedo
- » Jennifer Pippard
- » Ed P. Reyes
- » Barbara Romero
- » Jeff Rubin
- » Bruce Saito
- » Harry Saltzgaver
- » Dr. Paul Simon, MD
- » Keri Smith
- » Christopher Solek
- » Erin Stibal
- » Teresa Villegas

TECHNICAL ADVISORY COMMITTEE

- » Javier Aguilar
- » Lee Butterfield
- » Nick Franchino
- » Mark Greninger
- » Su Jin Lee
- » Weimin Li
- » Douglas Morales
- » Viktor Patiño
- » Patricia Pendleton

INCORPORATED CITIES OF LOS ANGELES COUNTY

- » Over 175 staff members in 86 cities

RESIDENTS OF LOS ANGELES COUNTY

- » Thousands of County residents shared their thoughts about parks in Los Angeles County

CONSULTANT TEAM

- »  PLACEWORKS
- » GreenInfo Network
- » DakeLuna Consultants
- » David Taussig & Associates
- » MIG
- » Prevention Institute

EXECUTIVE SUMMARY

In March 2015, the Los Angeles County Board of Supervisors approved a motion to initiate the Countywide Comprehensive Parks and Recreation Needs Assessment. This represents an unprecedented effort to document existing parks and recreation facilities in cities and unincorporated communities and to use these data to determine the scope, scale, and location of park need in Los Angeles County.

The Parks Needs Assessment will help local officials, park agencies, and residents understand the future steps that need to be taken to ensure all communities have adequate access to thriving parks.

Park projects in Los Angeles County are currently funded in part by Proposition A, the Safe Neighborhoods Park Tax that is set to expire in 2019. Once this tax sunsets, funding for park projects will be greatly reduced. The results of the Parks Needs Assessment will help inform planning and decision-making regarding future funding.

In initiating the Parks Needs Assessment, the Board of Supervisors has affirmed the importance of parks as essential infrastructure in the County. Healthy, safe communities have thriving parks that contribute to public health and well-being, create a sense of place, increase community cohesion, improve the environment, and boost the economy.

A NEW PARADIGM

The Parks Needs Assessment proposes a new way to understand and think about parks, recreation, and open space by:

- ◆ Considering **parks as key infrastructure** needed to maintain and improve the quality of life for all County residents
- ◆ Using a **new series of metrics** to determine park need
- ◆ Supporting a **need-based allocation of funding** for parks and recreation
- ◆ Emphasizing both **community priorities** and **deferred maintenance projects**





A NEW PARADIGM

- ◆ **Parks as key infrastructure**
- ◆ **A new series of metrics**
- ◆ **Need-based allocation of funding**
- ◆ **Community priorities and deferred maintenance projects**

EXECUTIVE SUMMARY

In March 2015, the Los Angeles County Board of Supervisors approved a motion to initiate the Countywide Comprehensive Parks and Recreation Needs Assessment. This represents an unprecedented effort to document existing parks and recreation facilities in cities and unincorporated communities and to use these data to determine the scope, scale, and location of park need in Los Angeles County.

The Parks Needs Assessment will help local officials, park agencies, and residents understand the future steps that need to be taken to ensure all communities have adequate access to thriving parks.

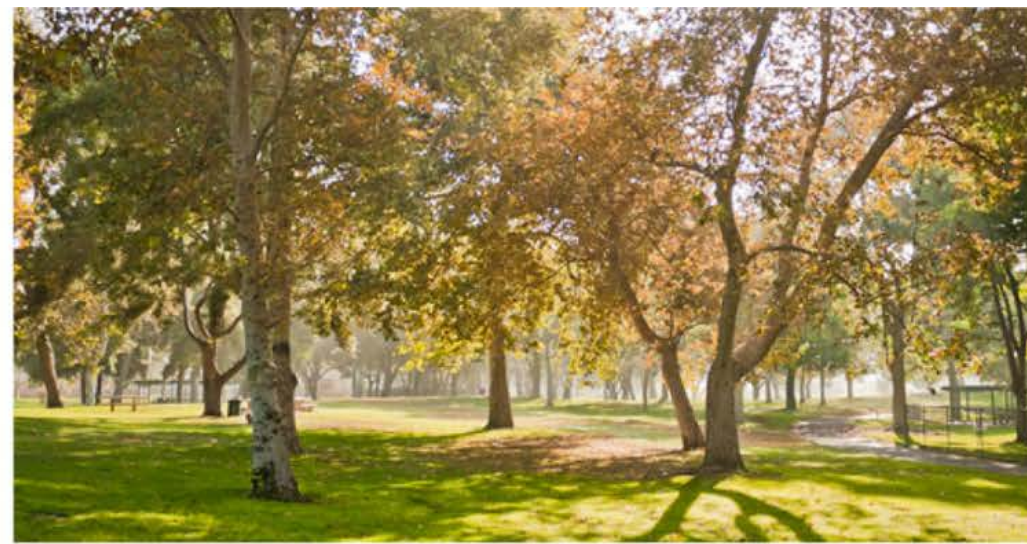
Park projects in Los Angeles County are currently funded in part by Proposition A, the Safe Neighborhoods Park Tax that is set to expire in 2019. Once this tax sunsets, funding for park projects will be greatly reduced. The results of the Parks Needs Assessment will help inform planning and decision-making regarding future funding.

In initiating the Parks Needs Assessment, the Board of Supervisors has affirmed the importance of parks as essential infrastructure in the County. Healthy, safe communities have thriving parks that contribute to public health and well-being, create a sense of place, increase community cohesion, improve the environment, and boost the economy.

A NEW PARADIGM

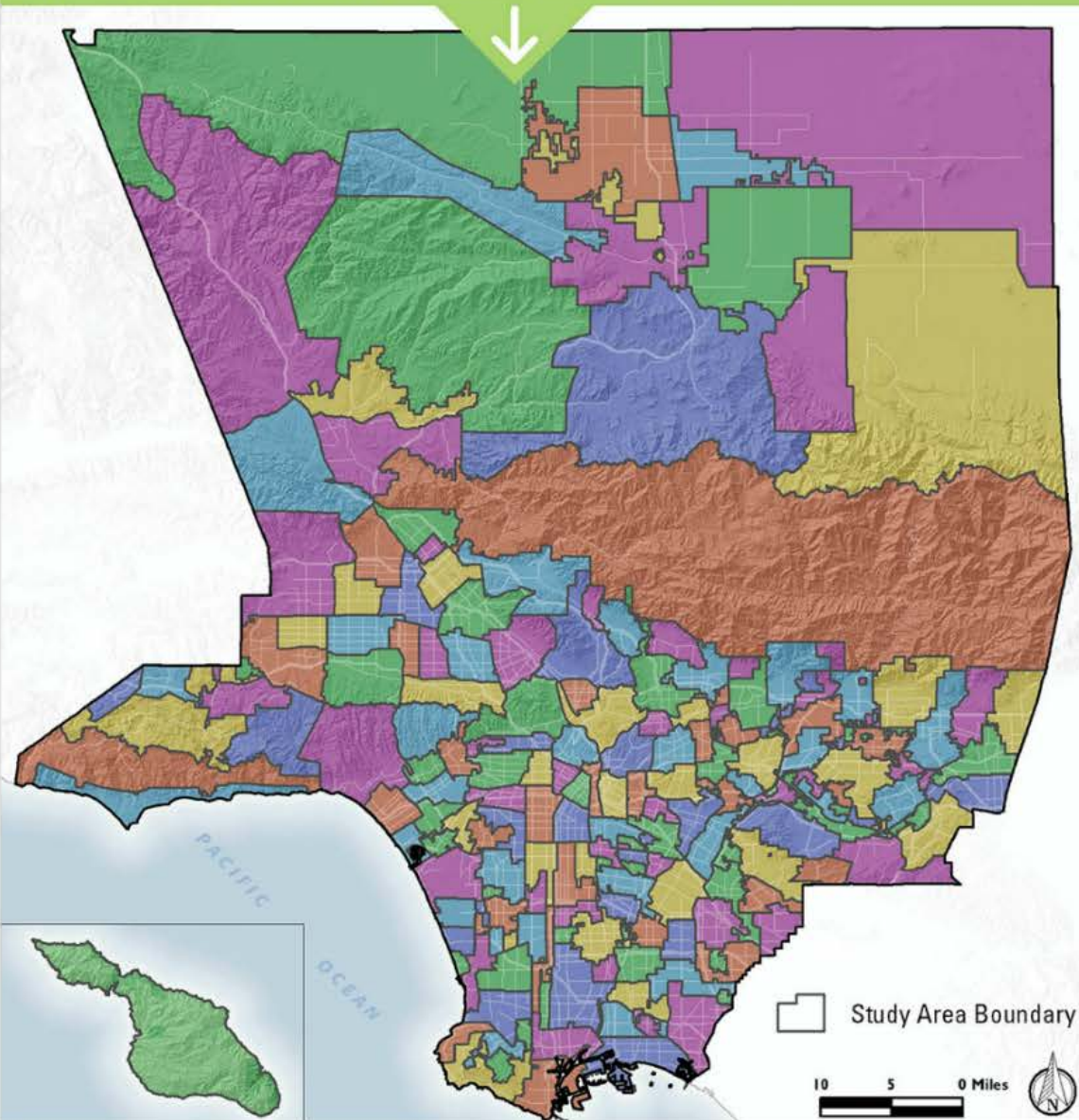
The Parks Needs Assessment proposes a new way to understand and think about parks, recreation, and open space by:

- ◆ Considering **parks as key infrastructure** needed to maintain and improve the quality of life for all County residents
- ◆ Using a **new series of metrics** to determine park need
- ◆ Supporting a **need-based allocation of funding** for parks and recreation
- ◆ Emphasizing both **community priorities** and **deferred maintenance projects**



INITIATION

The Board of Supervisors launched the Parks Needs Assessment in March 2015, giving the County Department of Parks and Recreation 16 months to complete the task. The work was guided by both a Steering Committee and a Technical Advisory Committee (TAC). The Steering Committee's 40 members were appointed by the Board offices and included representatives from cities, advocacy groups, and community-based organizations; subject matter experts; and community members at large. The Steering Committee provided insight on key issues, including dividing the County into Study Areas, and the 188 approved Study Areas were used for many of the analyses. The TAC provided review of GIS and mapping methodology at key points of the project.



INVENTORY

Accurate data about the size and location of all existing parks in the county were critical to completing the Parks Needs Assessment. These data were not available in a single database; therefore, the Department of Parks and Recreation collaborated with 86 cities to complete the first ever Countywide inventory of existing parks.



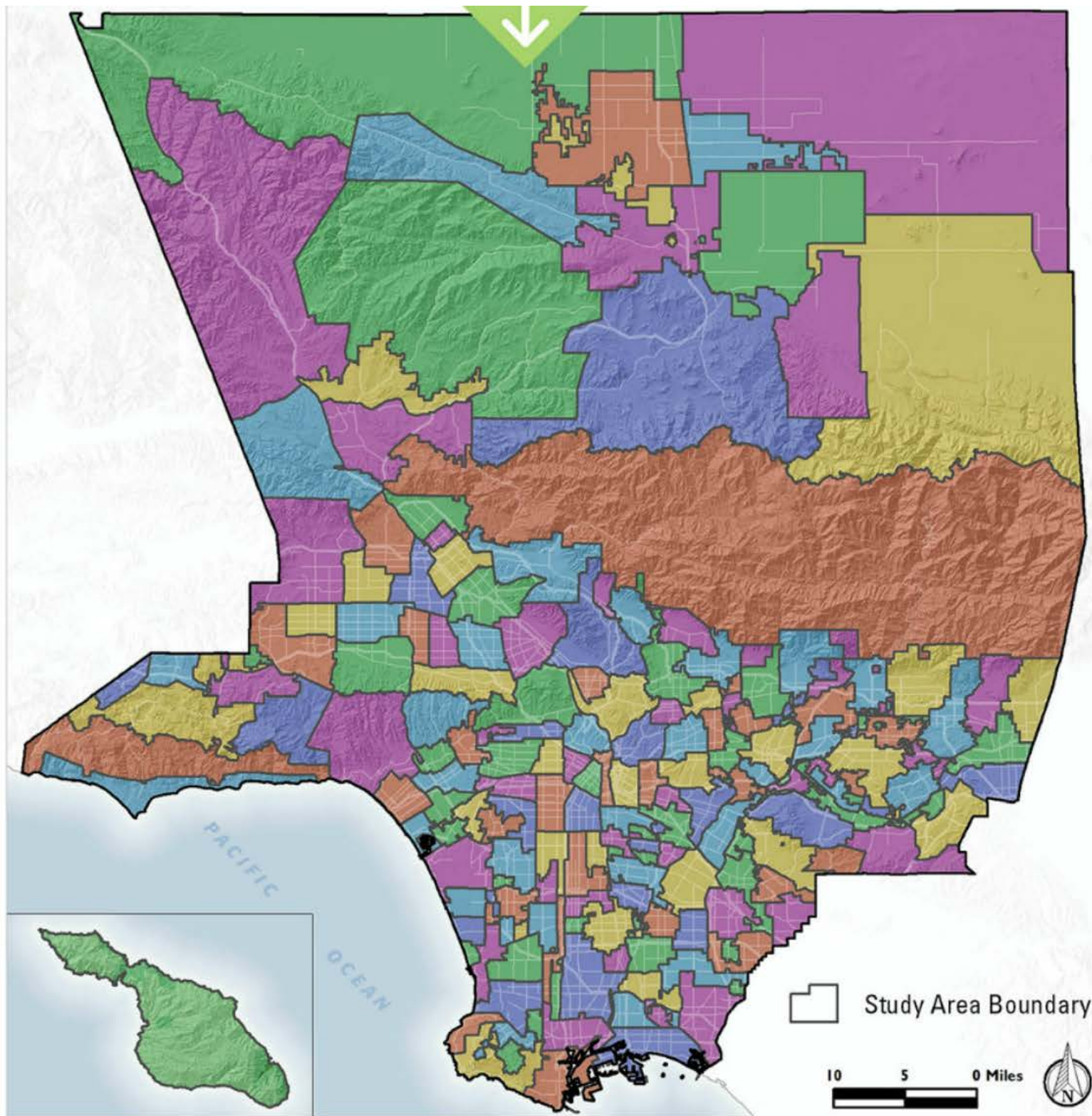
3,023

PARKS INVENTORIED

9,472

AMENITIES INVENTORIED





City of Los Angeles
43 Study Areas

+

9 Large Cities
(population >150,000)
19 Study Areas

+

79 Cities
(population <130,000)
79 Study Areas

+

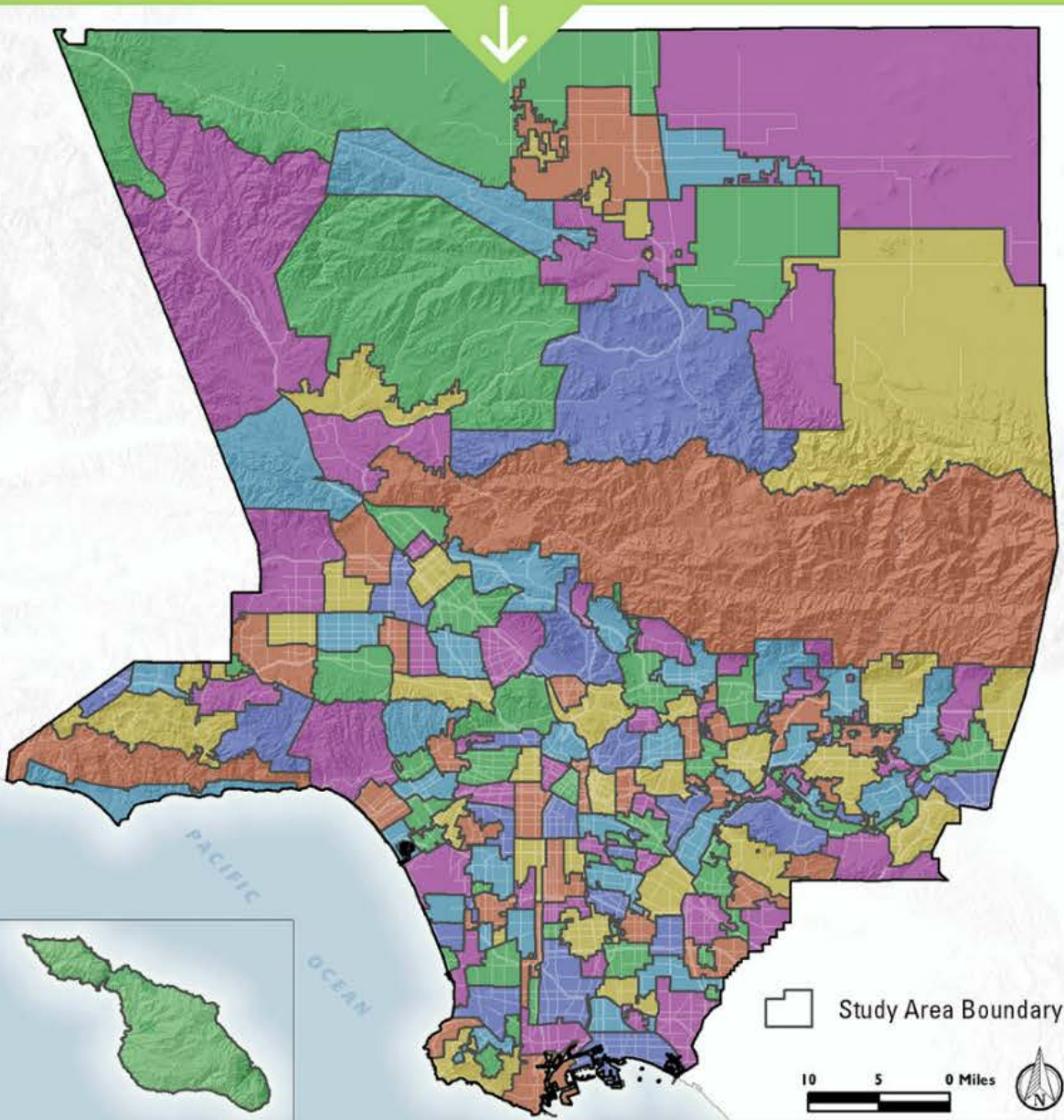
Unincorporated County
47 Study Areas

=

**188 Study Areas in
Los Angeles County**

INITIATION

The Board of Supervisors launched the Parks Needs Assessment in March 2015, giving the County Department of Parks and Recreation 16 months to complete the task. The work was guided by both a Steering Committee and a Technical Advisory Committee (TAC). The Steering Committee's 40 members were appointed by the Board offices and included representatives from cities, advocacy groups, and community-based organizations; subject matter experts; and community members at large. The Steering Committee provided insight on key issues, including dividing the County into Study Areas, and the 188 approved Study Areas were used for many of the analyses. The TAC provided review of GIS and mapping methodology at key points of the project.



INVENTORY

Accurate data about the size and location of all existing parks in the county were critical to completing the Parks Needs Assessment. These data were not available in a single database; therefore, the Department of Parks and Recreation collaborated with 86 cities to complete the first ever Countywide inventory of existing parks.



3,023
PARKS INVENTORIED

9,472
AMENITIES INVENTORIED





3,023

PARKS INVENTORIED



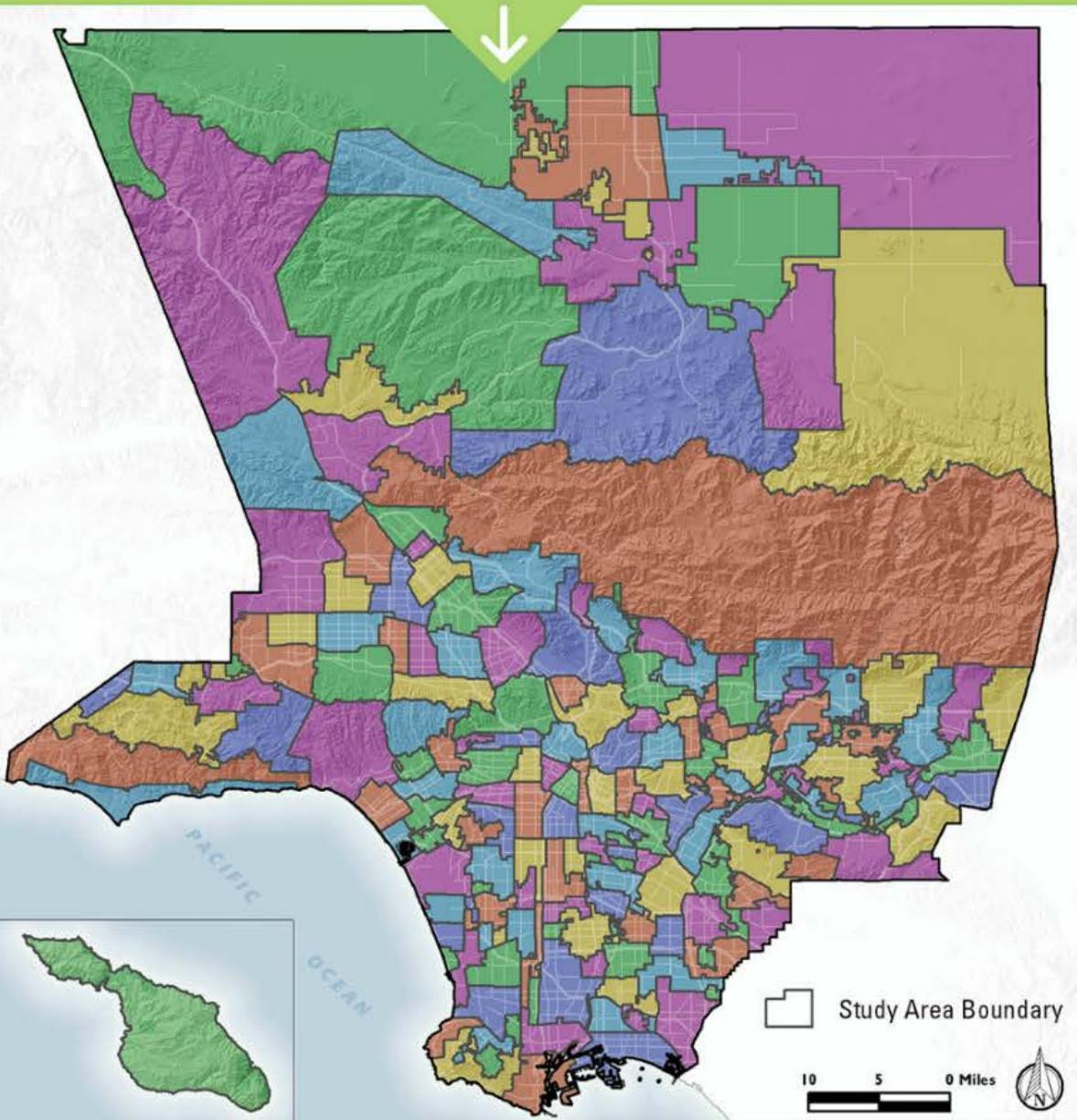
9,472

AMENITIES INVENTORIED



INITIATION

The Board of Supervisors launched the Parks Needs Assessment in March 2015, giving the County Department of Parks and Recreation 16 months to complete the task. The work was guided by both a Steering Committee and a Technical Advisory Committee (TAC). The Steering Committee's 40 members were appointed by the Board offices and included representatives from cities, advocacy groups, and community-based organizations; subject matter experts; and community members at large. The Steering Committee provided insight on key issues, including dividing the County into Study Areas, and the 188 approved Study Areas were used for many of the analyses. The TAC provided review of GIS and mapping methodology at key points of the project.



INVENTORY

Accurate data about the size and location of all existing parks in the county were critical to completing the Parks Needs Assessment. These data were not available in a single database; therefore, the Department of Parks and Recreation collaborated with 86 cities to complete the first ever Countywide inventory of existing parks.



3,023
PARKS INVENTORIED

9,472
AMENITIES INVENTORIED



PARKS & OPEN SPACE INVENTORY

Four types of parks and open spaces were identified as means to categorize the facilities inventoried during the Parks Needs Assessment. This uniform categorization system ensured an “apples to apples” comparison among facilities and Study Areas. The four categories are specific to the Parks Needs Assessment, and differ from the categories used in cities and by other agencies in the County. For the inventory, specialized facilities serving the entire County or specific sub-regions, such as arboreta, amphitheaters, and wilderness parks were included in the category that covered their specific characteristics, and only if they were part of a park or open space area.



LOCAL PARKS are under 100 acres and contain active amenities such as athletic courts and fields, playgrounds, and swimming pools. Local parks identified in the inventory are sometimes called community parks or regional parks by the agencies that operate them. These parks are included in the analysis of all park metrics. **1,602 INVENTORIED**



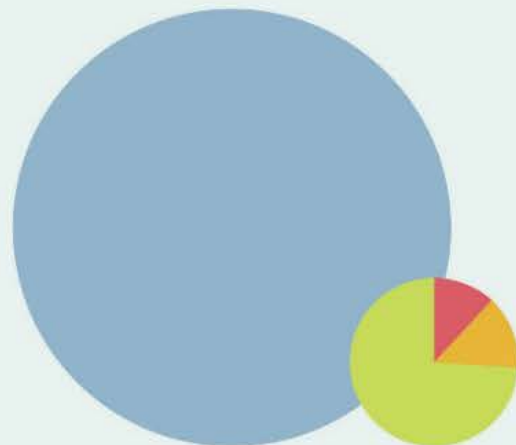
REGIONAL RECREATION PARKS are over 100 acres and contain active amenities such as athletic courts and fields, playgrounds, and swimming pools. Locally-administered “regional parks” under 100 acres in size are not included in this category, and are included as local parks in the inventory instead. Regional Recreation Parks are included in the analysis of all park metrics, and were subject to a separate facility review process due to their large size and regional importance. **17 INVENTORIED**



REGIONAL OPEN SPACE includes facilities that are more than 5 acres and generally contain only passive amenities such as visitor centers, trails, picnic shelters, or restrooms. These facilities are not included in the analysis of any individual park metric, but are included in the analysis of park need. **329 INVENTORIED**



NATURAL AREAS are generally larger than 100 acres and contain no reported amenities. These facilities are not included in any of the needs analyses of the Parks Needs Assessment. **1,075 INVENTORIED**



LOCAL PARKS
15,723 acres



REGIONAL RECREATION PARKS
18,248 acres



REGIONAL OPEN SPACE
98,977 acres



NATURAL AREAS
768,699 acres



1,068
Baseball Fields



1,022
Tennis Courts



940
Basketball Courts



510
Multipurpose Fields



424
Soccer Fields



1,452
Playgrounds



373
Fitness Zones



96
Skate Parks



51
Dog Parks



1,251
Picnic Shelters



1,190
Restrooms



518
Senior Centers



187
Gymnasiums



90
Community Rec Centers



218
Swimming Pools

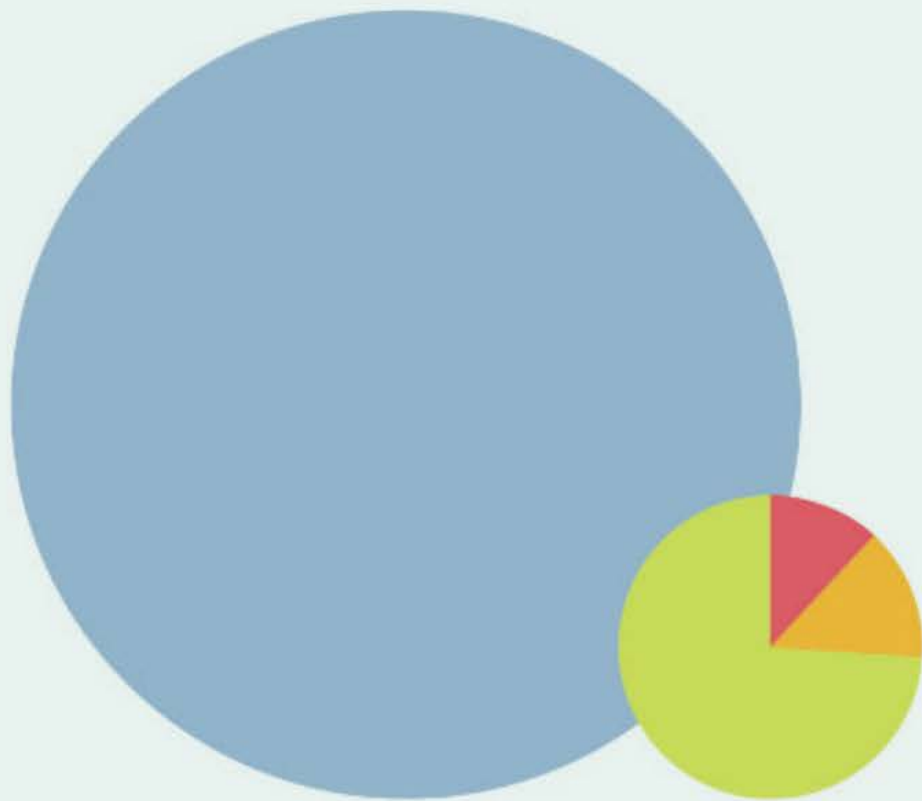


82
Splash Pads



367
Unique Amenities*

* Unique amenities include equestrian arenas, volleyball courts, amphitheaters, community gardens, concession stands, gazebos, etc.



LOCAL PARKS

15,723 acres



REGIONAL RECREATION PARKS

18,248 acres



REGIONAL OPEN SPACE

98,977 acres



NATURAL AREAS

768,699 acres



1,068

Baseball Fields



1,022

Tennis Courts



940

Basketball Courts



510

Multipurpose Fields



424

Soccer Fields



1,452

Playgrounds



373

Fitness Zones



96

Skate Parks



51

Dog Parks



1,251

Picnic Shelters



1,190

Restrooms



518

Senior Centers



90

Community Rec Centers



187

Gymnasiums



218

Swimming Pools



82

Splash Pads



367

Unique Amenities*

** Unique amenities include equestrian arenas, volleyball courts, amphitheaters, community gardens, concession stands, gazebos, etc.*

PARKS & OPEN SPACE INVENTORY

Four types of parks and open spaces were identified as means to categorize the facilities inventoried during the Parks Needs Assessment. This uniform categorization system ensured an “apples to apples” comparison among facilities and Study Areas. The four categories are specific to the Parks Needs Assessment, and differ from the categories used in cities and by other agencies in the County. For the inventory, specialized facilities serving the entire County or specific sub-regions, such as arboreta, amphitheaters, and wilderness parks were included in the category that covered their specific characteristics, and only if they were part of a park or open space area.



LOCAL PARKS are under 100 acres and contain active amenities such as athletic courts and fields, playgrounds, and swimming pools. Local parks identified in the inventory are sometimes called community parks or regional parks by the agencies that operate them. These parks are included in the analysis of all park metrics. **1,602 INVENTORIED**



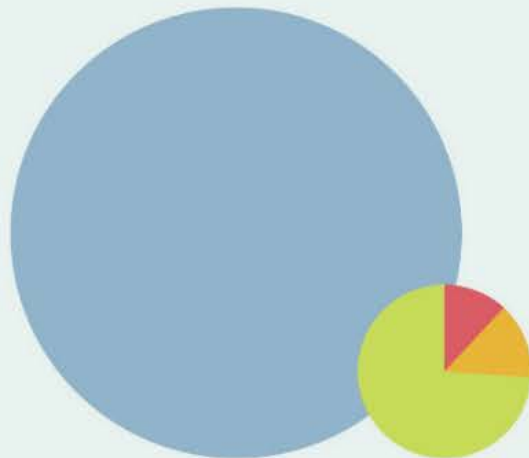
REGIONAL RECREATION PARKS are over 100 acres and contain active amenities such as athletic courts and fields, playgrounds, and swimming pools. Locally-administered “regional parks” under 100 acres in size are not included in this category, and are included as local parks in the inventory instead. Regional Recreation Parks are included in the analysis of all park metrics, and were subject to a separate facility review process due to their large size and regional importance. **17 INVENTORIED**



REGIONAL OPEN SPACE includes facilities that are more than 5 acres and generally contain only passive amenities such as visitor centers, trails, picnic shelters, or restrooms. These facilities are not included in the analysis of any individual park metric, but are included in the analysis of park need. **329 INVENTORIED**



NATURAL AREAS are generally larger than 100 acres and contain no reported amenities. These facilities are not included in any of the needs analyses of the Parks Needs Assessment. **1,075 INVENTORIED**



LOCAL PARKS
15,723 acres



REGIONAL RECREATION PARKS
18,248 acres



REGIONAL OPEN SPACE
98,977 acres



NATURAL AREAS
768,699 acres



1,068
Baseball Fields



1,022
Tennis Courts



940
Basketball Courts



510
Multipurpose Fields



424
Soccer Fields



1,452
Playgrounds



373
Fitness Zones



96
Skate Parks



51
Dog Parks



1,251
Picnic Shelters



1,190
Restrooms



518
Senior Centers



187
Gymnasiums



90
Community Rec Centers



218
Swimming Pools



82
Splash Pads



367
Unique Amenities*

* Unique amenities include equestrian arenas, volleyball courts, amphitheaters, community gardens, concession stands, gazebos, etc.

PARK METRICS

Park need is traditionally measured with a single metric, such as the number of acres of park land available to residents, or the percentage of residents living within walking distance of a park. Measuring only a single aspect of need provides a one-dimensional understanding of park need. The Steering Committee recognized that park need is affected by many variables and approved a suite of five metrics that produce a robust understanding of physical park needs in each Study Area and in the County:



Park Condition



Park Access



Park Amenities



Park Land



Park Pressure

► How much park land is in the County?

3.3 ACRES

Local & Regional Recreation Park per 1,000 persons



► How much land is available to residents in the area around each park?

Low park pressure at **20%** of parks in the County



High park pressure at **80%** of parks in the County

► What park amenities are available in the County?



Tennis Courts
11 per 100,000 residents
National Average: 46 per 100,000



Basketball Courts
10 per 100,000 residents
National Average: 63.1 per 100,000



Baseball Fields
11 per 100,000 residents
National Average: 14.6 per 100,000



Soccer Fields
4 per 100,000 residents
National Average: 16.7 per 100,000



Multipurpose Fields
5 per 100,000 residents
National Average: 50 per 100,000



Restrooms
13 per 100,000 residents
National Average: 64.5 per 100,000



Picnic Shelters
15 per 100,000 residents
National Average: 100 per 100,000



Gymnasiums
2 per 100,000 residents
National Average: no data



Senior Centers
15 per 100,000 residents
National Average: 10.3 per 100,000



Community Rec Centers
5 per 100,000 residents
National Average: 10.3 per 100,000



Fitness Zones
4 per 100,000 residents
National Average: no data



Skate Parks
1 per 100,000 residents
National Average: 1.9 per 100,000



Playgrounds
15 per 100,000 residents
National Average: 45 per 100,000



Dog Parks
1 per 100,000 residents
National Average: 3.6 per 100,000

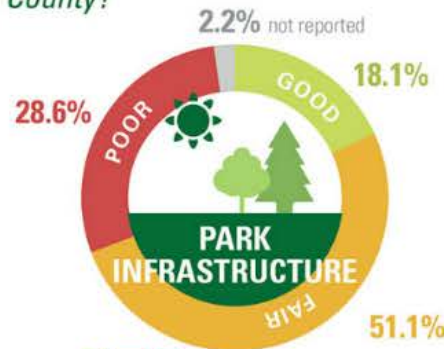
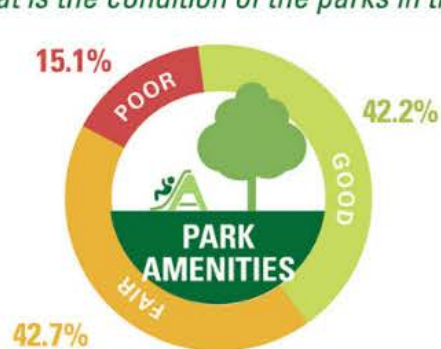


Splash Pads
1 per 100,000 residents
National Average: no data



Swimming Pools
2 per 100,000 residents
National Average: 5.6 per 100,000

► What is the condition of the parks in the County?



► How much of the population has access to parks?



49% of population Countywide lives within 1/2 mile of a park

51% of population Countywide lives beyond 1/2 mile of a park

► *How much park land is in the County?*

3.3 ACRES

Local & Regional Recreation Park per 1,000 persons



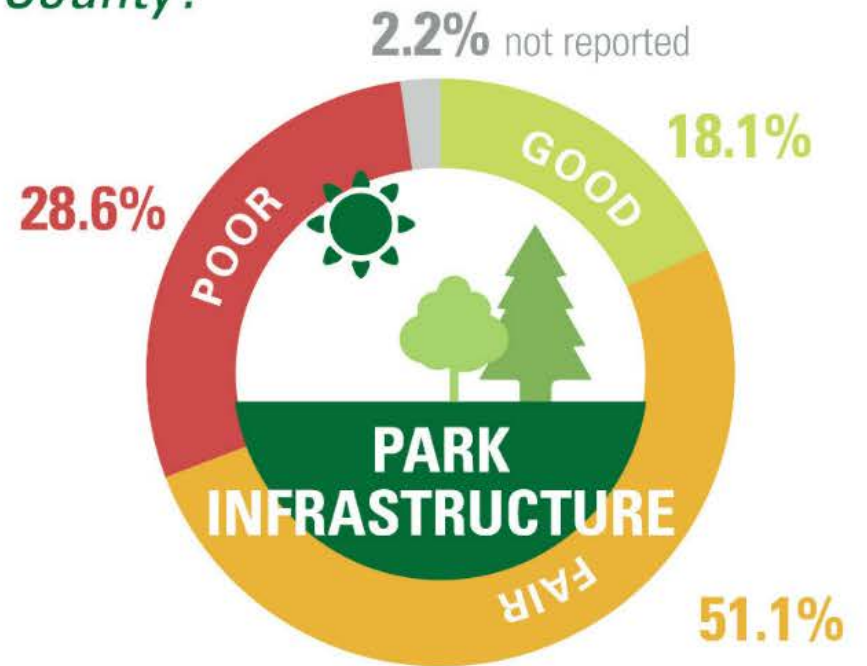
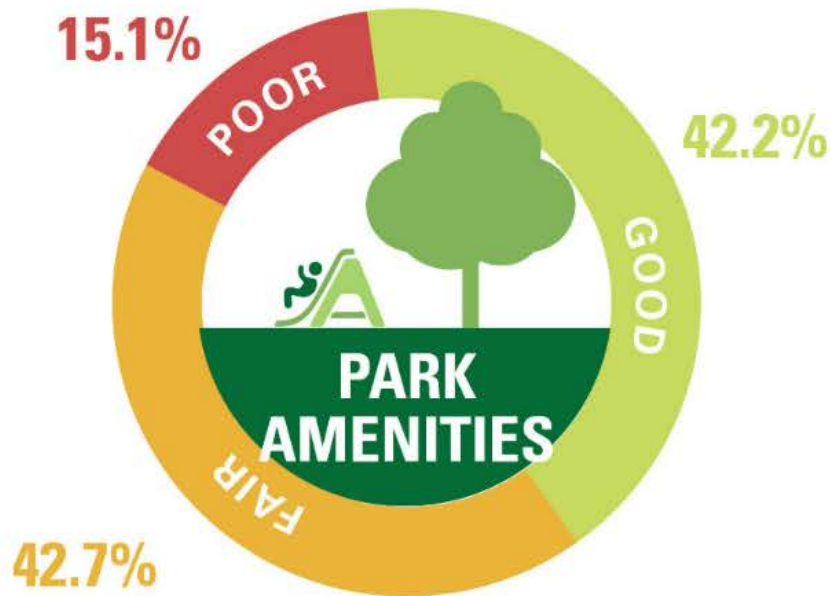
► *How much land is available to residents in the area around each park?*

Low park pressure at
20%
of parks in the County



High park pressure at
80%
of parks in the County

► *What is the condition of the parks in the County?*



► *How much of the population has access to parks?*



► What park amenities are available in the County?



Baseball Fields

11 per 100,000 residents

National Average: 14.6 per 100,000



Tennis Courts

11 per 100,000 residents

National Average: 46 per 100,000



Basketball Courts

10 per 100,000 residents

National Average: 63.1 per 100,000



Multipurpose Fields

5 per 100,000 residents

National Average: 50 per 100,000



Soccer Fields

4 per 100,000 residents

National Average: 16.7 per 100,000



Playgrounds

15 per 100,000 residents

National Average: 45 per 100,000



Fitness Zones

4 per 100,000 residents

National Average: no data



Skate Parks

1 per 100,000 residents

National Average: 1.9 per 100,000



Dog Parks

1 per 100,000 residents

National Average: 3.6 per 100,000



Picnic Shelters

15 per 100,000 residents

National Average: 100 per 100,000



Restrooms

13 per 100,000 residents

National Average: 64.5 per 100,000



Senior Centers

15 per 100,000 residents

National Average: 10.3 per 100,000



Community Rec Centers

5 per 100,000 residents

National Average: 10.3 per 100,000



Gymnasiums

2 per 100,000 residents

National Average: no data



Splash Pads

1 per 100,000 residents

National Average: no data



Swimming Pools

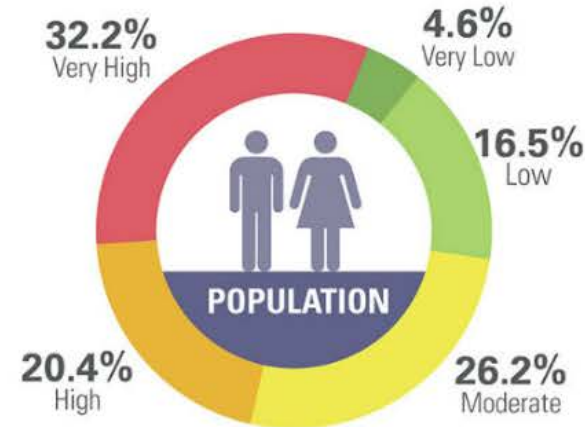
2 per 100,000 residents

National Average: 5.6 per 100,000

PARK NEED

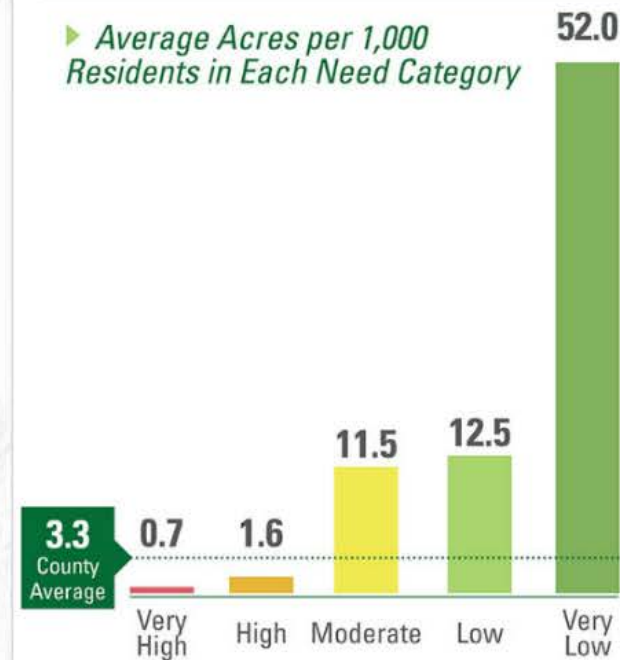
The results of the analysis of the five park metrics were combined to determine an overall park need level for each Study Area. This approach creates a framework for assessing park need from a Countywide perspective.

Population in Each Need Category*

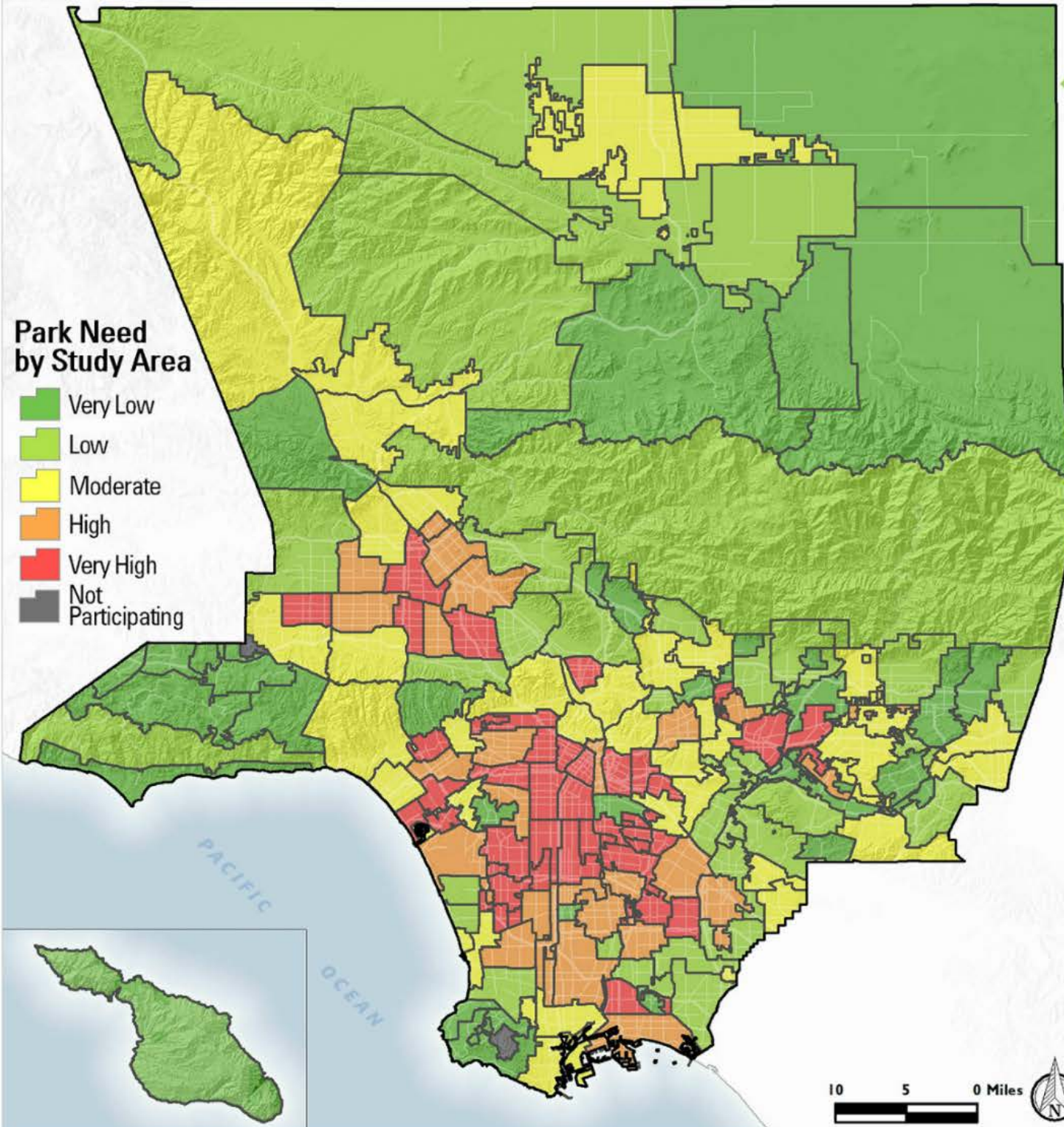
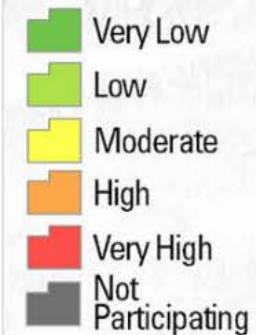


*0.1% Not Participating

Average Acres per 1,000 Residents in Each Need Category



Park Need by Study Area





Park
Land



Park
Access



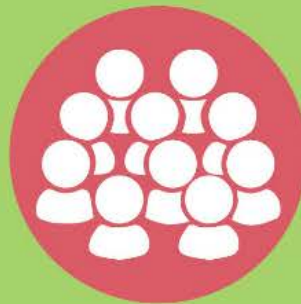
Park
Pressure



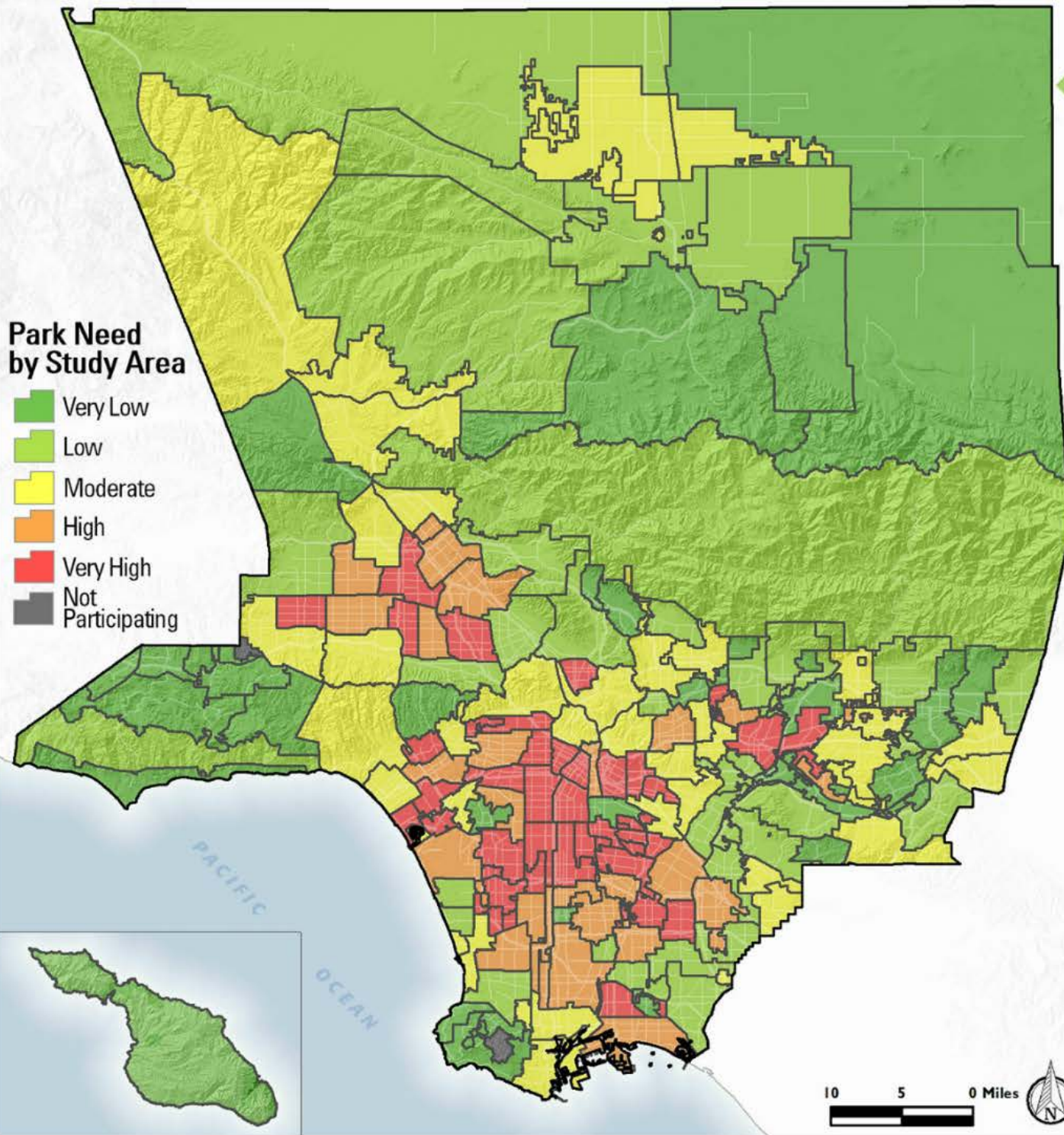
Park
Amenities



Park
Condition



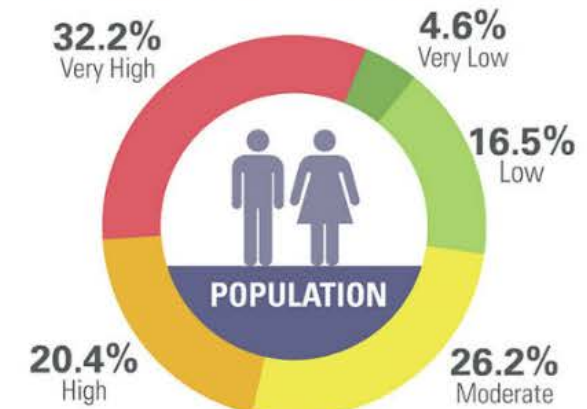
Population Density



PARK NEED

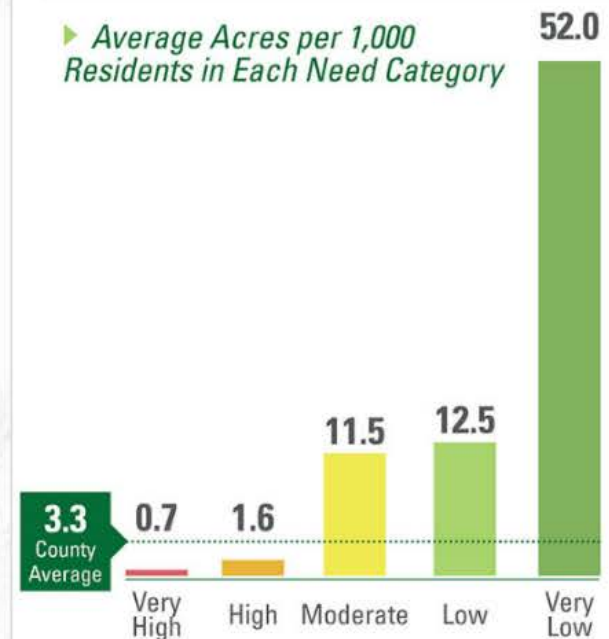
The results of the analysis of the five park metrics were combined to determine an overall park need level for each Study Area. This approach creates a framework for assessing park need from a Countywide perspective.

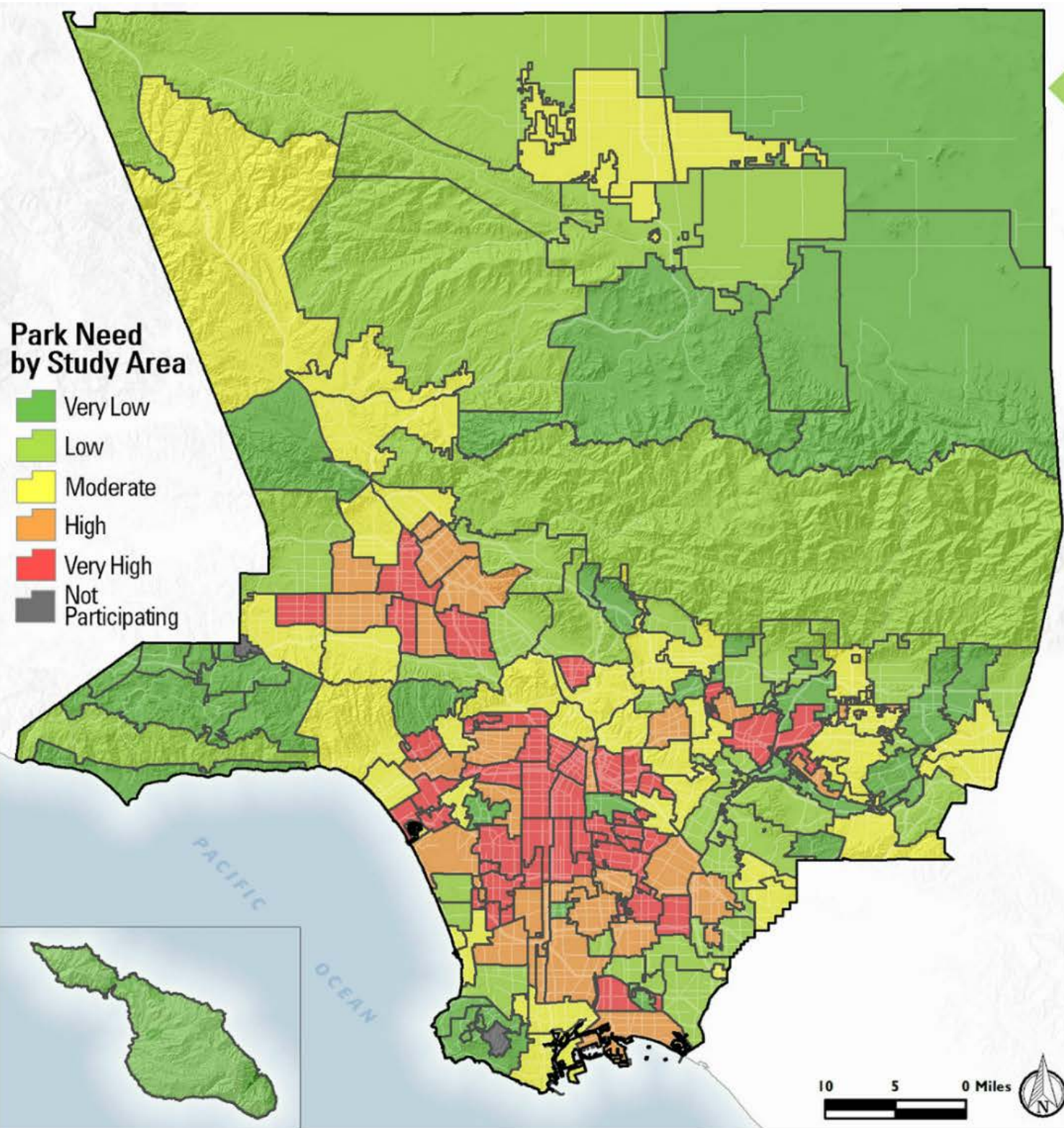
Population in Each Need Category*



*0.1% Not Participating

Average Acres per 1,000 Residents in Each Need Category

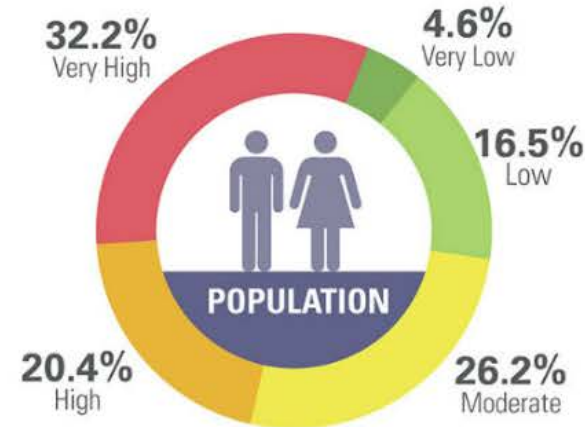




PARK NEED

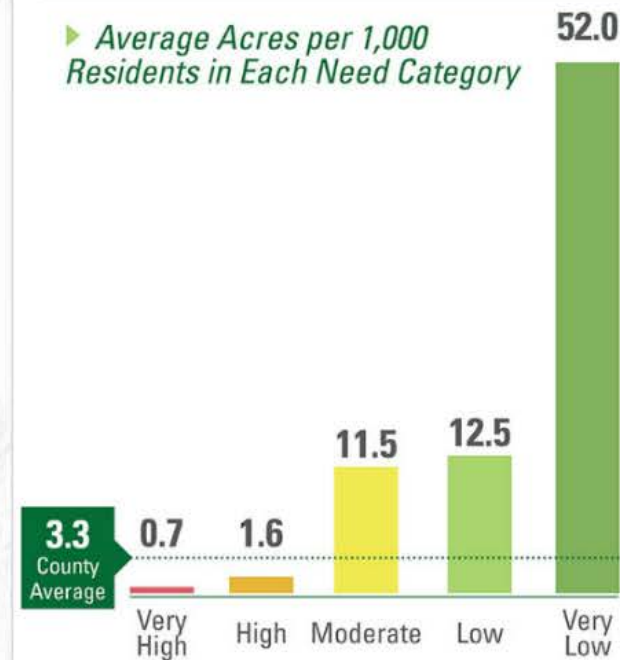
The results of the analysis of the five park metrics were combined to determine an overall park need level for each Study Area. This approach creates a framework for assessing park need from a Countywide perspective.

Population in Each Need Category*

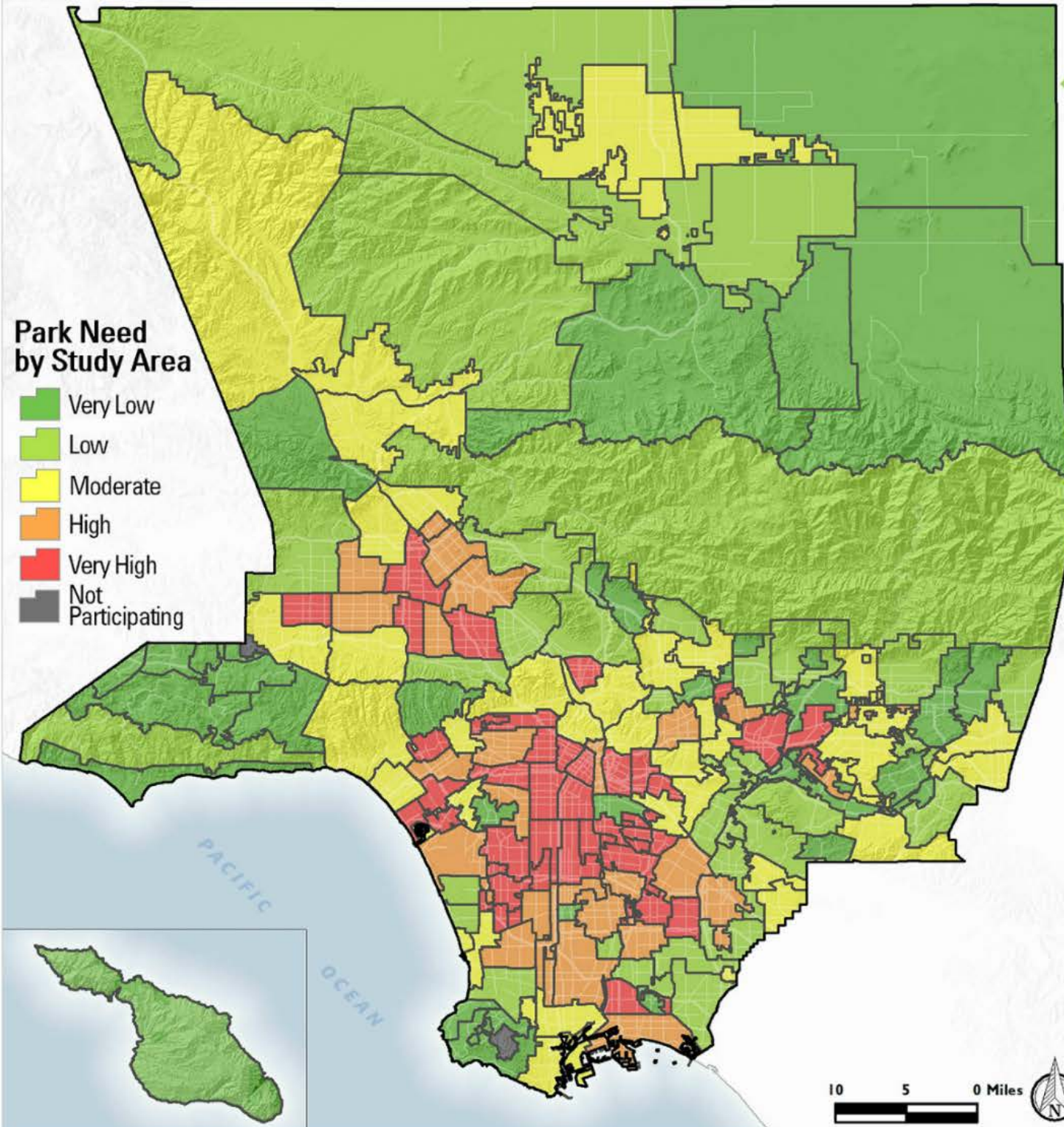
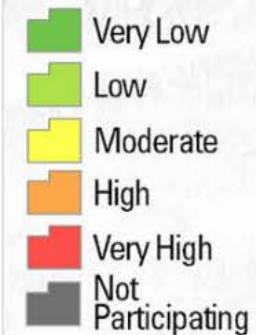


*0.1% Not Participating

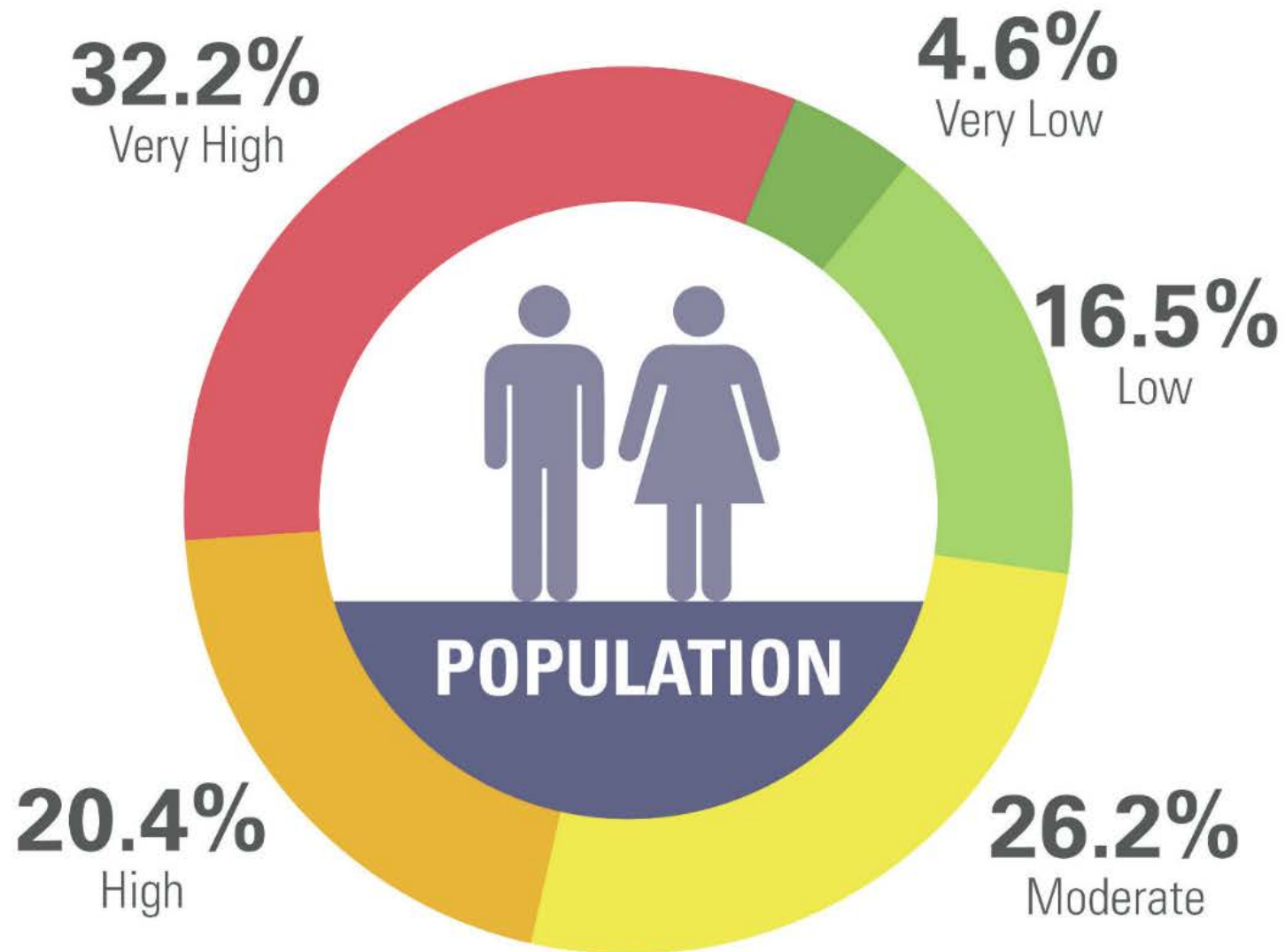
Average Acres per 1,000 Residents in Each Need Category



Park Need by Study Area

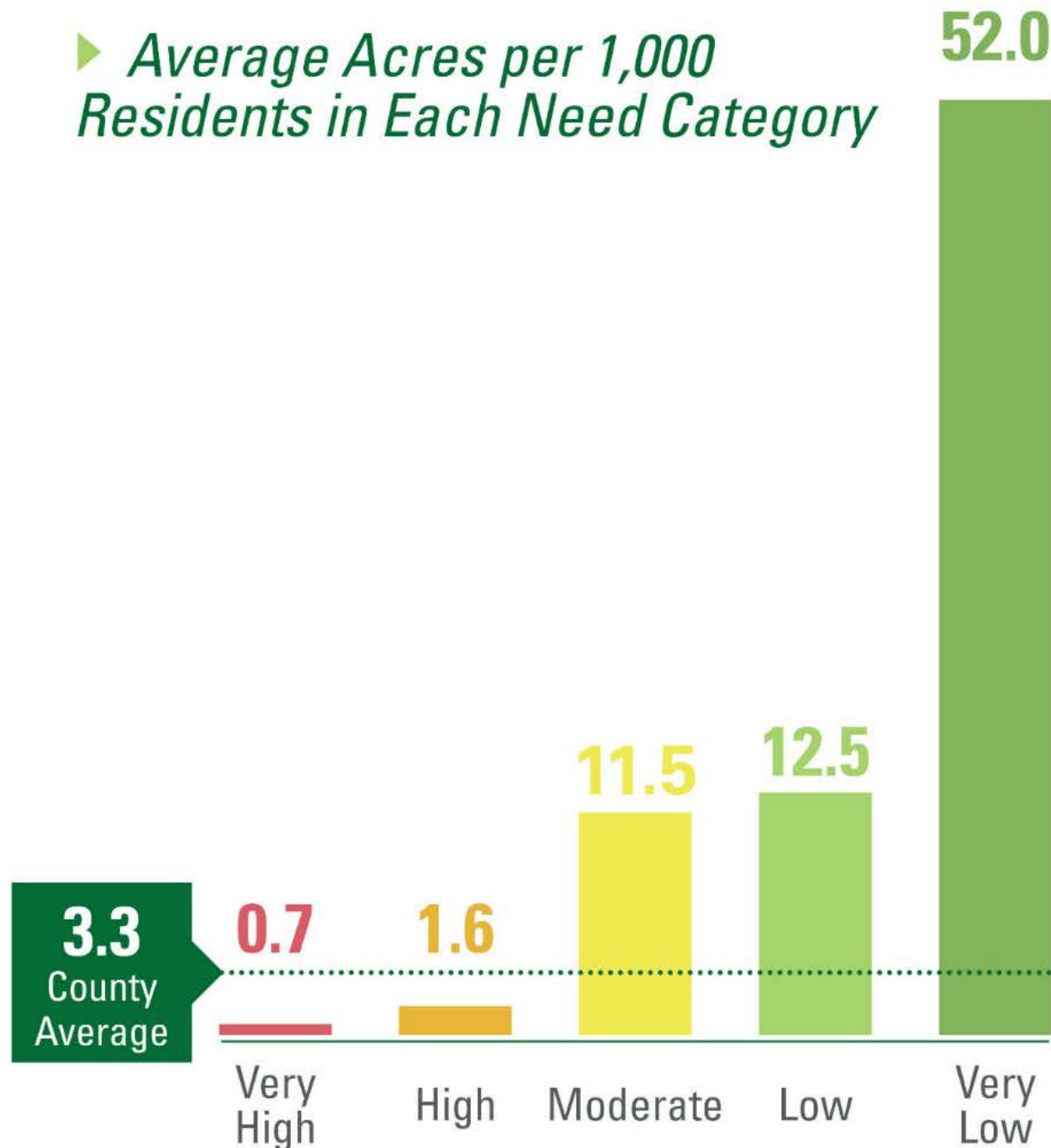


► *Population in Each Need Category**



**0.1% Not Participating*

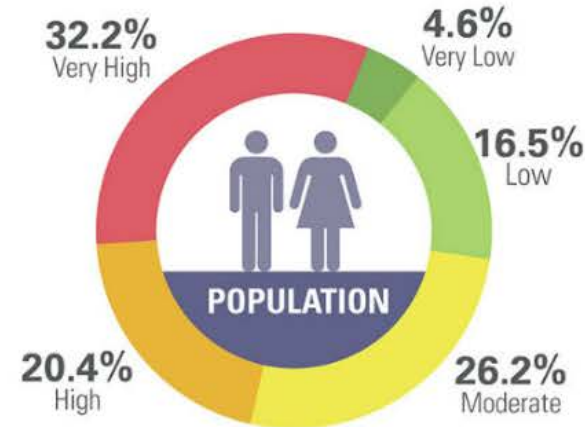
► *Average Acres per 1,000
Residents in Each Need Category*



PARK NEED

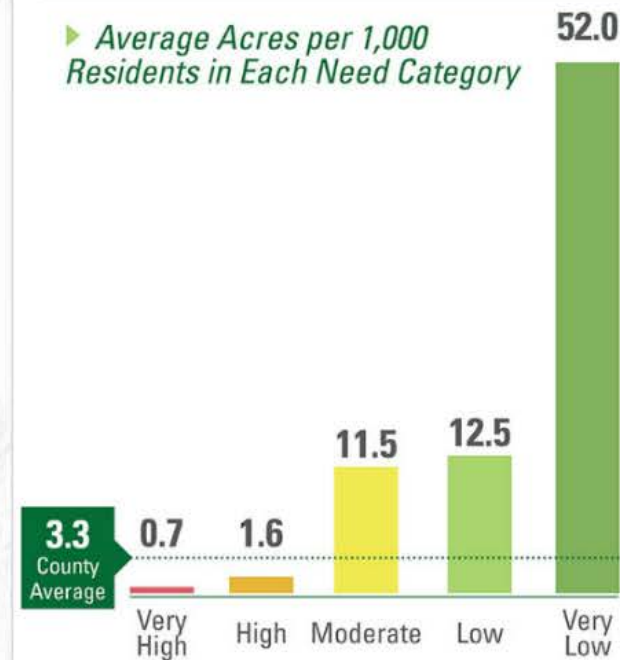
The results of the analysis of the five park metrics were combined to determine an overall park need level for each Study Area. This approach creates a framework for assessing park need from a Countywide perspective.

Population in Each Need Category*

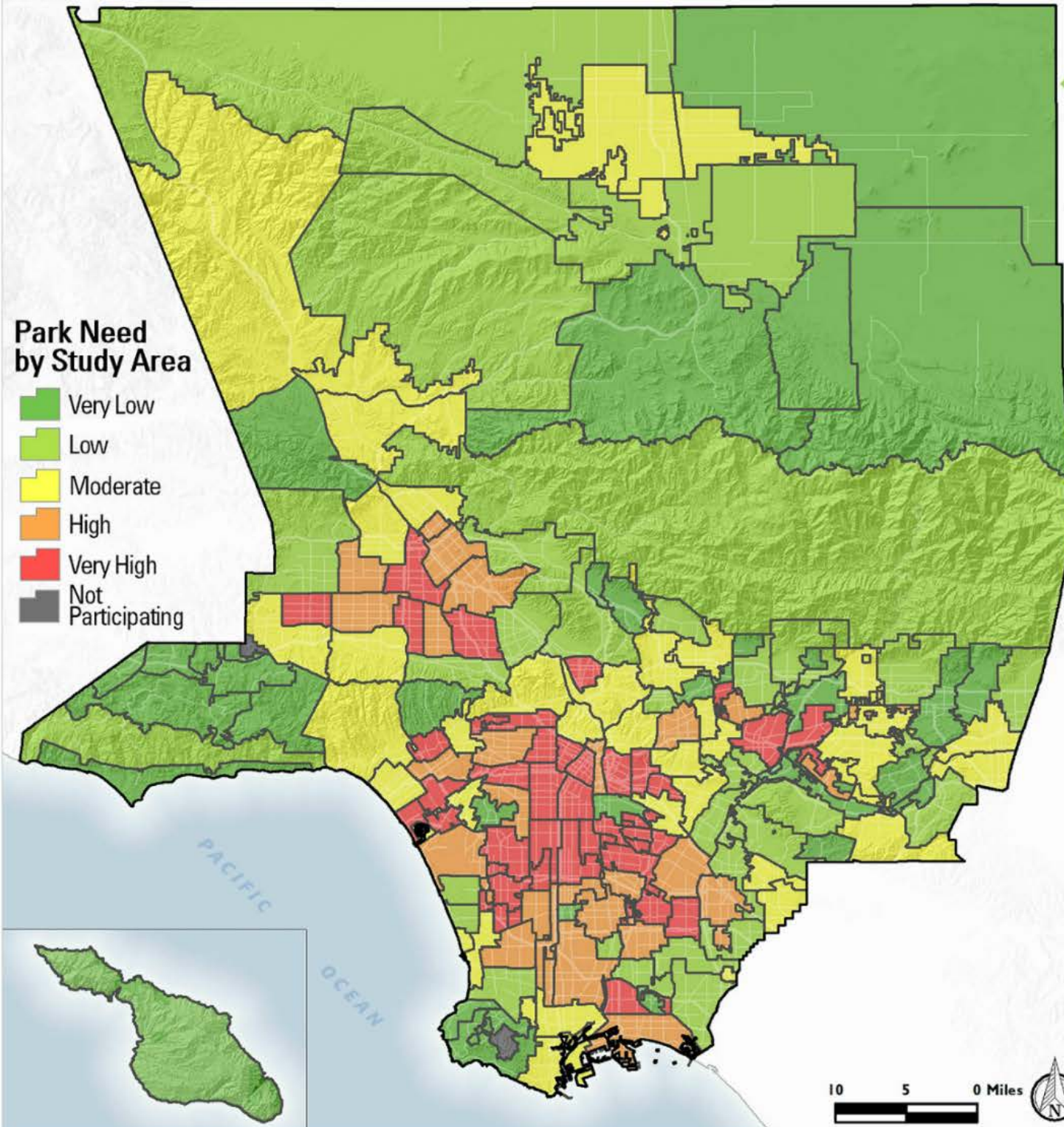
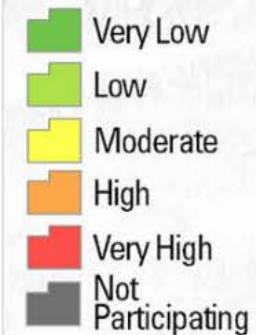


*0.1% Not Participating

Average Acres per 1,000 Residents in Each Need Category



Park Need by Study Area

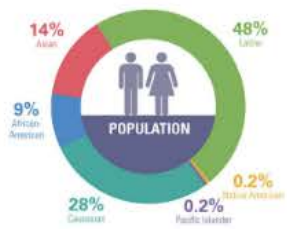


COMMUNITY PROFILE

A community profile summarizing demographic, health, and environmental information was completed in each Study Area to supplement park metrics.

*Data sources for demographic information: 2013 Los Angeles County Age/Race/Gender Population Estimates, US EPA Smart Location Database, Los Angeles County Poverty Estimates, 2013, and the US Census American Community Survey 5-Year Estimates, 2013.

Population by Race/Ethnicity*



*Total is less than 100% due to rounding.

Population at or below 200% Poverty Level



Population without Vehicle Access



Population in Linguistic Isolation



Population Distribution by Age



OZONE

Varying levels of ozone concentration throughout the County.

*Data source: CalEnviroScreen 2.0, 2013.



PM 2.5

Concentration of particulate matter 2.5 micrometers or less in diameter (PM 2.5) throughout the County.

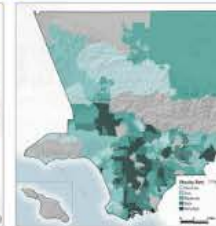
*Data source: CalEnviroScreen 2.0, 2013.



OBESITY

Percentage of obese fifth graders throughout the County.

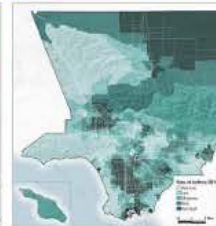
*Data source: Los Angeles County Department of Public Health, 2015.



ASTHMA

Number of emergency room visits for asthma treatments per 10,000 people per year.

*Data source: CalEnviroScreen 2.0, 2013.



DIESEL EMISSIONS

Rates of diesel particulate matter emissions in Los Angeles County.

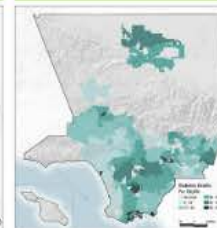
*Data source: CalEnviroScreen 2.0, 2013.



DIABETES

Diabetes death rate per 100,000 residents in the County.

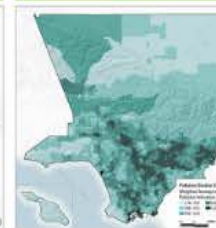
*Data source: CalEnviroScreen 2.0, 2013.



POLLUTION BURDEN

Pollution scores, based on 12 pollution burden indicators.

*Data source: CalEnviroScreen 2.0, 2013.



BICYCLE/PED. COLLISIONS

All collisions between automobiles/bicycles and automobiles/pedestrians.

*Data source: Transportation Injury Mapping System (TIMS), Caltrans New Data, 2003-2012.

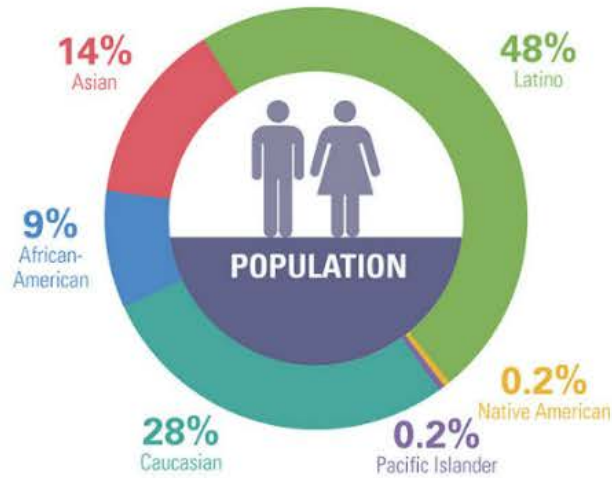


COMMUNITY PROFILE

A community profile summarizing demographic, health, and environmental information was completed in each Study Area to supplement park metrics.

*Data sources for demographic information: 2014 Los Angeles County Age/Race/Gender Population Estimates; US EPA Smart Location Database; Los Angeles County Poverty Estimates, 2013; and the US Census American Community Survey 5 Year Estimates, 2013

► Population by Race/Ethnicity*



*Total is less than 100% due to rounding

► Population at or below 200% Poverty Level



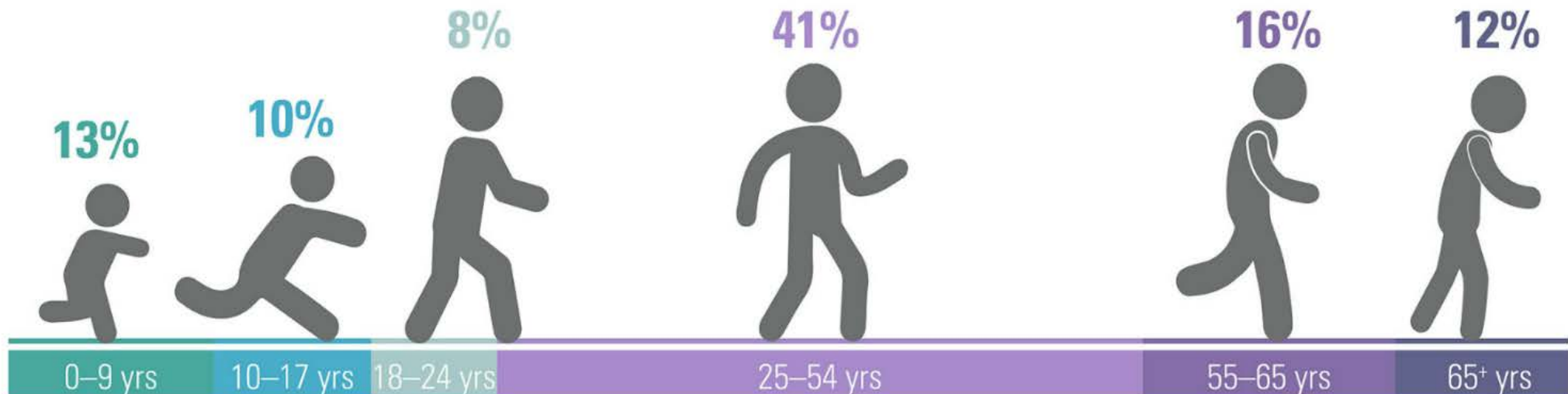
► Population without Vehicle Access



► Population in Linguistic Isolation



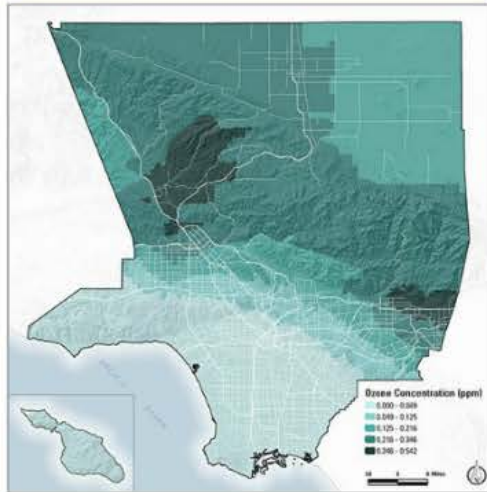
► Population Distribution by Age



OZONE

Varying levels of ozone concentration throughout the County.

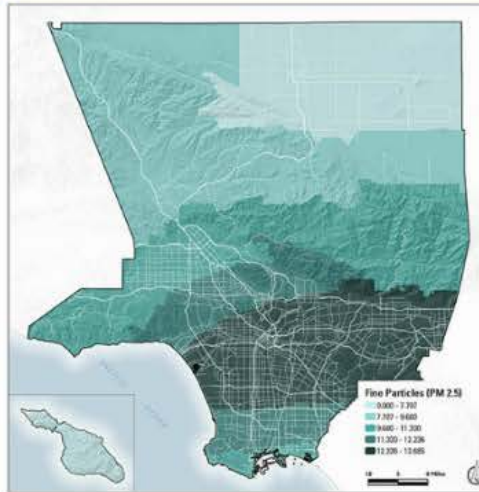
*Data source: CalEnviroScreen 2.0, 2013.



PM 2.5

Concentration of particulate matter 2.5 micrometers or less in diameter (PM 2.5) throughout the County.

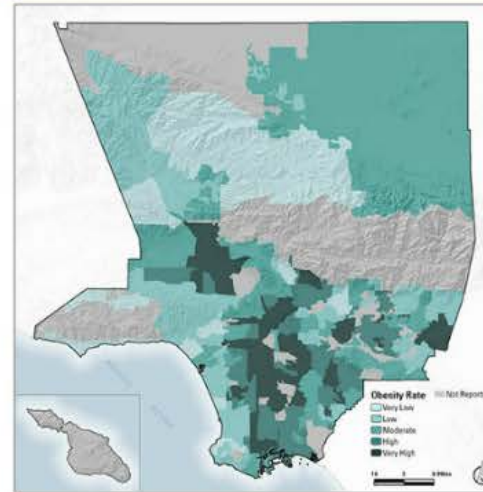
*Data source: CalEnviroScreen 2.0, 2013.



OBESITY

Percentage of obese fifth graders throughout the County.

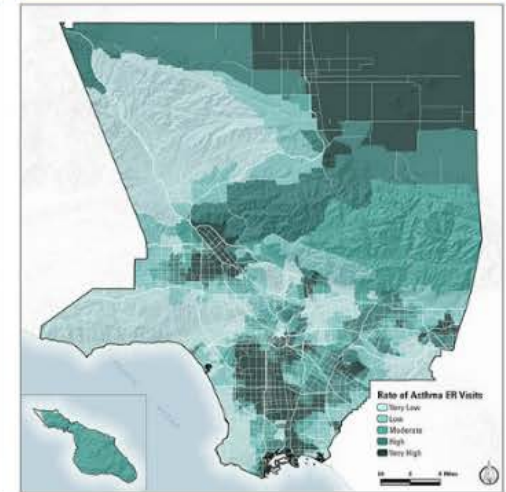
*Data source: Los Angeles County Department of Public Health, 2015.



ASTHMA

Number of emergency room visits for asthma treatments per 10,000 people per year.

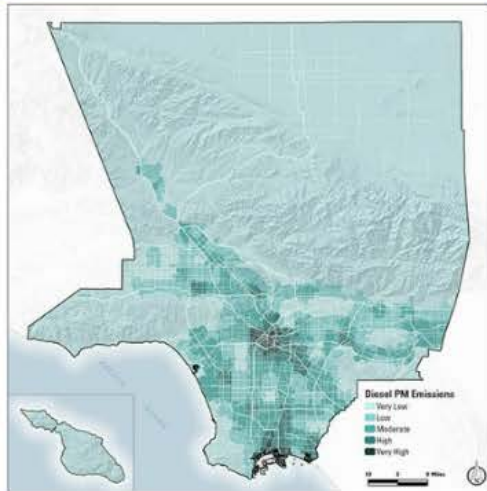
*Data source: CalEnviroScreen 2.0, 2013.



DIESEL EMISSIONS

Rates of diesel particulate matter emissions in Los Angeles County.

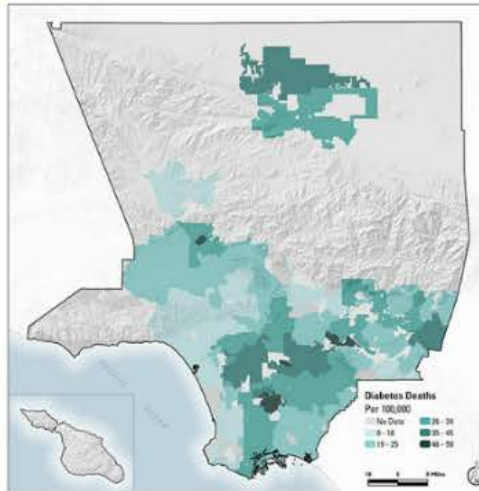
*Data source: CalEnviroScreen 2.0, 2013.



DIABETES

Diabetes death rate per 100,000 residents in the County.

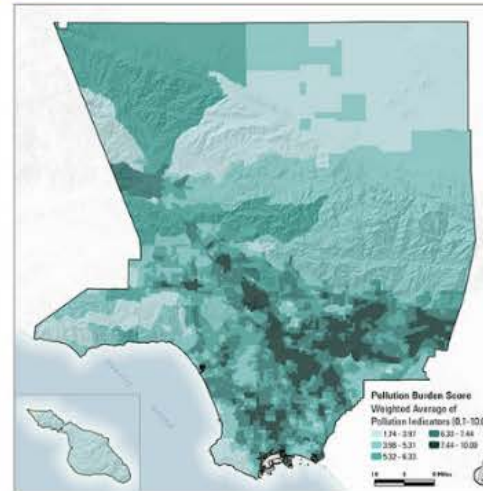
*Data source: CalEnviroScreen 2.0, 2013.



POLLUTION BURDEN

Pollution scores, based on 12 pollution burden indicators.

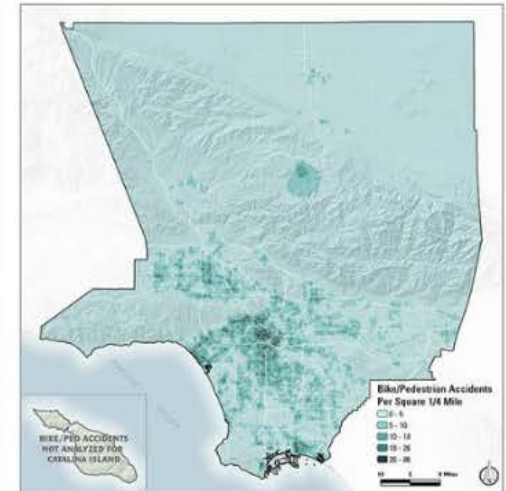
*Data source: CalEnviroScreen 2.0, 2013.



BICYCLE/PED. COLLISIONS

All collisions between automobiles/bicycles and automobiles/pedestrians.

*Data source: Transportation Injury Mapping System SWITRS Collision Raw Data, 2003-2012



COMMUNITY ENGAGEMENT

A Countywide education and awareness effort informed residents about the Parks Needs Assessment and encouraged them to attend a community workshop in their Study Area. The effort included a robust media component, informational meetings, and a dedicated online presence.

The lead agency in each Study Area was responsible for advertising its local workshop and was eligible for a \$2,500 stipend to cover workshop costs. Each lead agency submitted a community engagement plan describing the efforts they would make to attract participants to its workshop and was given resources such as flyers, logos, and social media hashtags to assist.

Translations of workshop and outreach materials were available in Spanish, Chinese, Korean, and Armenian and were strongly recommended for use in all Study Areas where 15% or more of the population is linguistically isolated. These four languages were selected because they are the dominant languages spoken by the linguistically isolated populations within the Study Areas meeting that criteria.

Population reached via media

2.5 million+
Traditional Media

1.1 million+
Social Media



30K+ views
Project Website



Number of Study Areas meeting criteria for translation recommendation

78 Study Areas
in Spanish

12 Study Areas
in Chinese

2 Study Areas
in Armenian

1 Study Area
in Korean

¡Hola!

你好

Բարեկ

안녕하세요

COMMUNITY WORKSHOPS

Workshop facilitators attended an intensive training session and received a 50-page Facilitator Toolkit with Study Area-specific results of the analysis of the five park metrics, community profile information, templates, and other resources needed to host a successful workshop.

Community Engagement Workshops were held for 178 Study Areas between December 2015 and February 2016.* At each workshop, participants reviewed their Study Area's specific park metrics, generated a list of potential park projects, and prioritized those projects.

*Ten cities, comprising ten Study Areas, elected not to hold a workshop.



► *Population reached via media*

2.5 million+
Traditional Media



1.1 million+
Social Media



30K+ views
Project Website





178 Study Area Workshops



► *Number of Study Areas
meeting criteria for translation
recommendation*

78 Study Areas
in Spanish

¡Hola!

12 Study Areas
in Chinese

你好

2 Study Areas
in Armenian

Բարեւ

1 Study Area
in Korean

안녕하세요

COMMUNITY ENGAGEMENT

A Countywide education and awareness effort informed residents about the Parks Needs Assessment and encouraged them to attend a community workshop in their Study Area. The effort included a robust media component, informational meetings, and a dedicated online presence.

The lead agency in each Study Area was responsible for advertising its local workshop and was eligible for a \$2,500 stipend to cover workshop costs. Each lead agency submitted a community engagement plan describing the efforts they would make to attract participants to its workshop and was given resources such as flyers, logos, and social media hashtags to assist.

Translations of workshop and outreach materials were available in Spanish, Chinese, Korean, and Armenian and were strongly recommended for use in all Study Areas where 15% or more of the population is linguistically isolated. These four languages were selected because they are the dominant languages spoken by the linguistically isolated populations within the Study Areas meeting that criteria.

Population reached via media

2.5 million+ Traditional Media
1.1 million+ Social Media



30K+ views
Project Website



Number of Study Areas meeting criteria for translation recommendation

78 Study Areas in Spanish

12 Study Areas in Chinese

2 Study Areas in Armenian

1 Study Area in Korean

¡Hola!

你好

Բարեկ

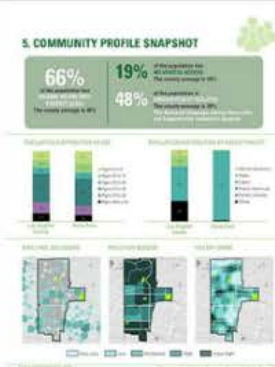
안녕하세요

COMMUNITY WORKSHOPS

Workshop facilitators attended an intensive training session and received a 50-page Facilitator Toolkit with Study Area-specific results of the analysis of the five park metrics, community profile information, templates, and other resources needed to host a successful workshop.

Community Engagement Workshops were held for 178 Study Areas between December 2015 and February 2016.* At each workshop, participants reviewed their Study Area's specific park metrics, generated a list of potential park projects, and prioritized those projects.

*Ten cities, comprising ten Study Areas, elected not to hold a workshop.





PRIORITIZED PROJECTS

Community members at all workshops identified the top ten local park projects in their Study Area. Prioritized projects included repairing or replacing amenities in existing parks, adding new amenities to existing parks, and constructing new parks. Additional projects were prioritized by the managing agencies of regional recreation parks, regional specialty facilities, and open space/nature centers.



Community Workshops Flow Chart



COST ESTIMATE

Cost estimates were developed for the prioritized projects from each community workshop and for all deferred maintenance projects using a standardized set of costs developed with input from several agencies and cost estimators with extensive experience throughout Los Angeles County. Costs for deferred maintenance projects prioritized by local communities are included in the cost of prioritized projects, and not in the costs for deferred maintenance. Cost estimates for prioritized projects in regional recreation parks (included in the prioritized projects cost) and specialized facilities were furnished by each managing agency. All cost estimates were summed to provide a rough order-of-magnitude estimate of the cost needed to implement prioritized projects and catch up on deferred maintenance.



► *Community Workshops Flow Chart*



Review existing parks and metrics.



Develop comprehensive list of potential projects.



Prioritize top ten park projects.



PRIORITIZED PROJECTS

Community members at all workshops identified the top ten local park projects in their Study Area. Prioritized projects included repairing or replacing amenities in existing parks, adding new amenities to existing parks, and constructing new parks. Additional projects were prioritized by the managing agencies of regional recreation parks, regional specialty facilities, and open space/nature centers.

Community Workshops Flow Chart



COST ESTIMATE

Cost estimates were developed for the prioritized projects from each community workshop and for all deferred maintenance projects using a standardized set of costs developed with input from several agencies and cost estimators with extensive experience throughout Los Angeles County. Costs for deferred maintenance projects prioritized by local communities are included in the cost of prioritized projects, and not in the costs for deferred maintenance. Cost estimates for prioritized projects in regional recreation parks (included in the prioritized projects cost) and specialized facilities were furnished by each managing agency. All cost estimates were summed to provide a rough order-of-magnitude estimate of the cost needed to implement prioritized projects and catch up on deferred maintenance.

**\$8.8
billion**



Prioritized
Projects

**\$12
billion**



Deferred
Maintenance

**\$0.7
billion**

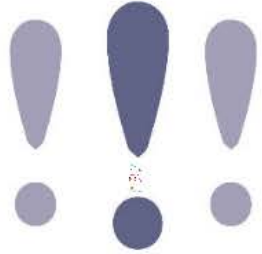


Specialized
Facilities



**\$21.5
billion**

**\$8.8
billion**



Prioritized
Projects



**\$12
billion**



Deferred
Maintenance



**\$0.7
billion**



Specialized
Facilities



46% Projects to Repair or Replace Existing Amenities



34% Projects to Add New Amenities to Existing Parks

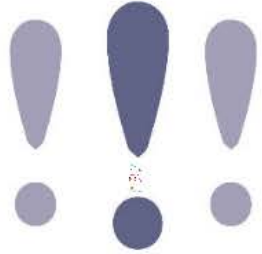


20% Projects for Constructing New Parks



Partner agencies may also implement projects that were not prioritized through this process

**\$8.8
billion**



Prioritized
Projects



**\$12
billion**



Deferred
Maintenance



**\$0.7
billion**



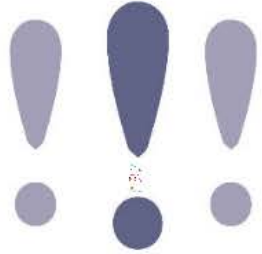
Specialized
Facilities



Deferred Maintenance Includes:

- Repairing amenities rated “fair”
- Replacing amenities rated “poor”
- Does not include projects to repair or replace amenities prioritized in any Study Area

**\$8.8
billion**



Prioritized
Projects



**\$12
billion**



Deferred
Maintenance



**\$0.7
billion**



Specialized
Facilities



Specialized Facilities Include:

Beaches

Natural Areas

Trails

Arboretums

Equestrian Facilities

Golf Courses

Other Specialized Regional Facilities



PRIORITIZED PROJECTS

Community members at all workshops identified the top ten local park projects in their Study Area. Prioritized projects included repairing or replacing amenities in existing parks, adding new amenities to existing parks, and constructing new parks. Additional projects were prioritized by the managing agencies of regional recreation parks, regional specialty facilities, and open space/nature centers.



Community Workshops Flow Chart



COST ESTIMATE

Cost estimates were developed for the prioritized projects from each community workshop and for all deferred maintenance projects using a standardized set of costs developed with input from several agencies and cost estimators with extensive experience throughout Los Angeles County. Costs for deferred maintenance projects prioritized by local communities are included in the cost of prioritized projects, and not in the costs for deferred maintenance. Cost estimates for prioritized projects in regional recreation parks (included in the prioritized projects cost) and specialized facilities were furnished by each managing agency. All cost estimates were summed to provide a rough order-of-magnitude estimate of the cost needed to implement prioritized projects and catch up on deferred maintenance.



WHERE DO WE GO FROM HERE?

The Parks Needs Assessment lays the groundwork for making important planning and funding decisions in Los Angeles County. Most importantly, it provides the County, its jurisdictions, and all residents of Los Angeles County with a wealth of parks-related information and opportunities.

◆ VALUABLE DATA

The data in the Parks Needs Assessment provide a clear picture of the current scope, scale, and location of park need in Los Angeles County. For the first time, a single source provides information regarding parks and park infrastructure across the entire County. This information helps us to understand the challenges facing our communities and may be used to seek funding and support for parks, inform staffing and programming decisions, and focus outreach efforts.

◆ ONGOING UPDATES

The County will seek to keep data in the Parks Needs Assessment up to date, in order to continue identifying new needs and to track progress toward addressing already-identified needs.

◆ FUNDING DECISIONS

With comprehensive information regarding existing parks and the need for new parks, amenities, and repairs, the County is well prepared to develop a funding measure for park and open space projects that will provide funding streams for improvements in the short, medium, and long term. Local, state, and federal funds can also be leveraged to enhance park and open space funding.

◆ EQUITABLE ALLOCATION

The comprehensive data in the Parks Needs Assessment can be used to allocate funds to meet identified needs in ways that emphasize areas with high to very high park need while also addressing the specific needs of every jurisdiction and community in the County.

◆ A NATIONAL MODEL

The Parks Needs Assessment serves as a model for a clear, replicable process that other jurisdictions across the country can use when they assess their regionwide park facilities and needs.

◆ NEW SOLUTIONS TO PROVIDE NEEDED PARKS

The Parks Needs Assessment shows that there are many areas in the County with high park need and a lack of vacant land for new traditional parks. Local agencies will need to find innovative solutions to provide essential park infrastructure by using underutilized land, utility corridors, alleys, and other public lands. Additionally, creative partnerships, such as joint use and reuse with schools, hospitals, libraries, and other facilities, should be considered in order to expand park opportunities and meet recreational needs.



WHERE DO WE GO FROM HERE?

- ◆ VALUABLE DATA
- ◆ ONGOING UPDATES
- ◆ FUNDING DECISIONS
- ◆ EQUITABLE ALLOCATION
- ◆ A NATIONAL MODEL
- ◆ NEW SOLUTIONS TO PROVIDE NEEDED PARKS



we all need
PARKS
for healthy, thriving and engaged communities

LOS ANGELES COUNTYWIDE COMPREHENSIVE PARKS & RECREATION NEEDS ASSESSMENT

MAY 3, 2016

Los Angeles County
Department of Parks & Recreation