



GAIL FARBER, Director

COUNTY OF LOS ANGELES DEPARTMENT OF PUBLIC WORKS

"To Enrich Lives Through Effective and Caring Service"

900 SOUTH FREMONT AVENUE
ALHAMBRA, CALIFORNIA 91803-1331

<http://dpw.lacounty.gov>

ADDRESS ALL CORRESPONDENCE TO:
P.O. BOX 1460
ALHAMBRA, CALIFORNIA 91802-1460

ADOPTED

BOARD OF SUPERVISORS
COUNTY OF LOS ANGELES

May 03, 2016

The Honorable Board of Supervisors
County of Los Angeles
383 Kenneth Hahn Hall of Administration
500 West Temple Street
Los Angeles, California 90012

#44

May 3, 2016

Lori Glasgow
LORI GLASGOW
EXECUTIVE OFFICER

SET: June 28, 2016 @ 9:30 a.m.

Dear Supervisors:

**STREET LIGHTING DISTRICTS
ANNEXATION AND LEVYING OF ASSESSMENTS FOR
COUNTY LIGHTING MAINTENANCE DISTRICT 1687 AND
COUNTY LIGHTING DISTRICT LANDSCAPING AND LIGHTING ACT-1,
UNINCORPORATED ZONE, AND NEGOTIATED EXCHANGE
OF PROPERTY TAX REVENUES, PETITION NOS. 15-412, 41-614, 39-613,
AND 75-1113, UNINCORPORATED AREAS OF AVOCADO HEIGHTS, HACIENDA HEIGHTS,
LA CRESCENTA, AND MONROVIA
(SUPERVISORIAL DISTRICTS 1, 4, AND 5)
(3 VOTES)**

SUBJECT

This action is to proceed with the annexation of territories to County Lighting Maintenance District 1687 and County Lighting District Landscaping and Lighting Act-1, Unincorporated Zone, and the levying of assessments on benefited properties within these territories for the installation, operation, and maintenance of street lighting facilities within the annexed territories.

IT IS RECOMMENDED THAT THE BOARD:

1. Find that the proposed project is categorically exempt from the provisions of the California Environmental Quality Act for the reasons stated in this letter and in the record of the project.
2. Approve the Engineer's Reports for Petition Nos. 15-412, 41-614, 39-613, and 75-1113 either as filed or as modified for the annexation of territories to County Lighting Maintenance District 1687 and County Lighting District Landscaping and Lighting Act-1, Unincorporated Zone, and the levying of assessments within the annexed territories for street lighting purposes.

The proposed annexation areas are located in the unincorporated communities of Avocado Heights, Hacienda Heights, La Crescenta, and Monrovia.

3. Adopt the Resolution of Intention to Annex Territories to County Lighting Maintenance District 1687 and County Lighting District Landscaping and Lighting Act-1, Unincorporated Zone, and Order the Levying of Assessments within the Annexed Territories for Fiscal Year 2016-17.

4. Set a date for a public hearing regarding the proposed annexation and levying of annual assessments within the annexed territories for street lighting purposes with a base assessment rate for a single-family residence of \$5 for the Unincorporated Zone of County Lighting District Landscaping and Lighting Act-1.

5. Instruct the Executive Officer of the Board to cause notice of the public hearing by mail at least 45 days prior to the scheduled public hearing date of Tuesday, June 28, 2016, pursuant to section 53753 of the California Government Code. The mailed notice will include assessment ballots.

6. Instruct the Executive Officer of the Board to cause notice of the public hearing to be posted in three conspicuous places within the territories to be annexed and to publish the notice of public hearing once a week for two successive weeks in a newspaper of general circulation. Such posting and publication to be completed at least 10 days prior to the date of hearing, pursuant to the California Streets and Highways Code section 5838.

AFTER THE PUBLIC HEARING, IT IS RECOMMENDED THAT THE BOARD:

1. Find that the annexations and assessments are for the purpose of meeting operating expenses; purchasing supplies, equipment, or materials; meeting financial reserve needs and requirements; and obtaining funds for capital projects, including the installation, operation, and maintenance of streetlights necessary to maintain service within the proposed annexation territories.

2. Order changes, if needed, in any matters provided in the Engineer's Reports, including changes in the improvements, the proposed diagrams, and/or proposed assessments.

3. Order the tabulation of assessment ballots submitted, and not withdrawn, in support of or in opposition to the proposed assessment.

4. Determine whether a majority protest against the proposed annexations or assessments exists.

5. Make a finding terminating the annexation, levying of assessments, and property tax transfer proceedings in those petition territories where there has been a majority protest to the assessments and refer the matter back to the Department of Public Works.

6. If there is no majority protest against the proposed assessments, adopt the Resolution Ordering Annexation of Territories to County Lighting Maintenance District 1687 and County Lighting District Landscaping and Lighting Act-1, Unincorporated Zone, Confirming a Diagram and Assessment, and Levying of Assessments within the Annexed Territories for Fiscal Year 2016-17, either as proposed or as modified by the Board. The adoption of the Resolution Ordering Annexation shall constitute the levying of assessments in Fiscal Year 2016-17.

7. Adopt the joint resolutions between the Board and other taxing agencies approving and accepting the negotiated exchange of property tax revenues resulting from the annexation of these territories to County Lighting Maintenance District 1687, as approved by the nonexempt taxing agencies.

PURPOSE/JUSTIFICATION OF RECOMMENDED ACTION

The purpose of these recommendations is to find that the project is categorically exempt from the California Environment Quality Act (CEQA) Guidelines; annex the territories known as Petition Nos. 15-412 (Third Avenue), 41-614 (Los Molinos Street), 39-613 (La Crescenta Avenue), and 75-1113 (Graydon Avenue), to County Lighting Maintenance District (CLMD) 1687 and County Lighting District (CLD) Landscaping and Lighting Act-1 (LLA-1), Unincorporated Zone (collectively, CLDs); levy assessments for Fiscal Year 2016-17 on the benefitted properties within the annexed territories for street lighting purposes; and approve the exchange of property tax revenues among those nonexempt agencies whose service areas are subject to the jurisdictional change.

Implementation of Strategic Plan Goals

This action will further the County's Strategic Plan Goals of Operational Effectiveness/Fiscal Sustainability (Goal 1) by annexing the territories to the CLDs, thereby providing the funding necessary for the operation and maintenance of streetlights that benefit the properties. This action is consistent with Community Support and responsiveness (Goal 2) by ensuring the street lighting services are provided to the benefiting properties. In addition, this action is consistent with Integrated Services Delivery (Goal 3) as it will provide convenience and safety for the motoring public as well as the safety and security of people and property.

FISCAL IMPACT/FINANCING

Sufficient funds are included in the CLMD 1687 (Fund F46) Fiscal Year 2015-16 Budget to fund estimated costs of \$5,100 for the operation and maintenance of the streetlights within these petitioned areas.

In subsequent years, the ongoing operation and maintenance costs of the streetlights within the annexed territories will be funded by the CLMD's share of ad valorem property taxes, supplemented by assessments approved annually by the Board from property owners within these annexed territories. The proposed annexations will result in a minimal property tax growth transfer from the affected taxing entities, including the County General Fund, the County of Los Angeles Public Library, the County of Los Angeles Road Maintenance Districts 1, 4 and 5, the Consolidated Fire Protection District of Los Angeles County, and the Los Angeles County Flood Control District to CLMD 1687.

FACTS AND PROVISIONS/LEGAL REQUIREMENTS

The Board previously approved and filed Petition Nos. 15-412, 41-614, 39-613, and 75-1113; adopted a resolution initiating proceedings for the annexation of territories to CLMD 1687; and ordered the Director of Public Works or her designee to prepare and file an Engineer's Report for each petitioned territory. The enclosed Engineer's Reports were prepared in response to that directive.

Under California Government Code section 53753, it is necessary to follow the procedures for levying of assessments previously authorized by the Board, including the distribution, receipt, and tabulation of ballots at a public hearing. Ballots will be mailed to each property owner within the annexation territories. The assessment will only be levied if the weighted majority of ballots returned are in favor of the assessment.

The enclosed Resolution of Intention must be adopted to set a date for the required public hearing. The Board, at the close of the public hearing, may delay its determination regarding the annexations and levying of assessments until a later date, continue the public hearing to receive further testimony, or make a determination regarding the annexation and/or assessment.

The approval of the enclosed Resolution Ordering Annexation, the levying of assessments, and the resolutions for the exchange of property tax revenues are required to provide the necessary funding for the operation and maintenance of the streetlights in the annexed territories.

The California Revenue and Taxation Code section 99.01(a)(4) provides that affected agencies must approve and accept the negotiated exchange of property tax revenues by resolution. The Joint Resolutions Approving and Accepting the Negotiated Exchange of Property Tax Revenues have been approved by nonexempt taxing agencies and are enclosed for your consideration.

The boundaries of the proposed annexations have been reviewed and approved by Public Works and the Assessor in accordance with the requirements of California Government Code section 58850 et seq. and are on file with Public Works. A copy of the diagram showing the boundaries of each proposed annexation area is attached to the Engineer's Report prepared for each petitioned area.

Following the Board's approval of the resolutions for the annexation, levying of assessments, and exchange of property tax revenues, Public Works will file the statement of boundary changes with the State Board of Equalization as required by California Government Code section 54900 et seq.

The resolutions have been approved as to form by County Counsel.

ENVIRONMENTAL DOCUMENTATION

The proposed action is categorically exempt from the provisions of CEQA. The project to annex territories to CLDs for the purpose of enhancing street lighting is within a class of projects that have been determined not to have a significant effect on the environment in that it meets the criteria set forth in section 15301(c) of CEQA Guidelines and Class 1(x)(27) of the County's Environmental Document Reporting Procedures and Guidelines, Appendix G, which specifically includes annexations to street lighting districts and installation of streetlights and involves no expansion of use. In addition, there are no cumulative impacts, unusual circumstances, or other limiting factors that would make the exemption inapplicable based on the project records.

IMPACT ON CURRENT SERVICES (OR PROJECTS)

The annexation of territories to the CLDs will result in street lighting for these areas and will have no impact on other services or projects.

CONCLUSION

Please return one adopted copy of this letter and a copy of the signed resolutions to the Department of Public Works, Traffic and Lighting Division. Also, please forward one adopted copy of the letter and resolutions to the Assessor, Ownership Services Section (Attention Sonia Carter Baltazar) and one to the Auditor-Controller, Tax Division (Attention Grace Kinoshita).

Respectfully submitted,

A handwritten signature in black ink that reads "Gail Farber". The script is cursive and fluid, with the first name "Gail" and last name "Farber" clearly legible.

GAIL FARBER

Director

GF:DRL:dj

Enclosures

c: Chief Executive Office (Rochelle Goff)
County Counsel (Talin Halabi)
Executive Office

**COUNTY OF LOS ANGELES
DEPARTMENT OF PUBLIC WORKS
ENGINEER'S REPORT
PETITION NO. 15-412
(THIRD AVENUE)**

On May 19, 2015, Item 42, the County of Los Angeles Board of Supervisors (Board of Supervisors) adopted a Resolution Initiating Proceedings for the annexation of territory to County Lighting Maintenance District (CLMD) 1687 and County Lighting District (CLD) Landscaping and Lighting Act-1 (LLA-1), Unincorporated Zone, pursuant to the California Streets and Highways Code Landscaping and Lighting Act of 1972, for the purpose of providing for the cost of installation, operating, and maintaining nine streetlights on new and existing wood poles within the territory proposed for annexation as shown on the diagram, plan, and specifications attached hereto. In addition, the Department of Public Works was ordered to prepare and file an Engineer's Report in accordance with section 22565 et seq. of the California Streets and Highways Code and Article XIII D, section 4(b) of the California Constitution. This report was prepared in response to that directive.

There will be no cost for the installation of the 9 streetlights on existing and new wood poles. The annual operating cost of \$1,311 for the nine 9,500 lumen high-pressure sodium vapor streetlights will be funded by CLMD 1687 and CLD LLA-1, Unincorporated Zone. An annual assessment for the operation and maintenance of the streetlights of \$5 per parcel for a single-family home, with proportionately higher assessments for other land uses, based on the approved Fiscal Year (FY) 2015-16 Annual Engineer's Report for CLD LLA-1, is proposed to be added to the FY 2016-17 tax bill of property owners whose parcels lie within the boundary of Petition No. 15-412. Each year thereafter, an annual assessment for the operation and maintenance costs of the streetlights, approved by the Board of Supervisors, will be added to the property tax bill.

With the passage of Proposition 218 (the Right to Vote on Taxes Act) by the California voters in November 1996, the levying of an assessment is now subject to certain provisions under Article XIII D of the California Constitution. This report conforms with the applicable provisions of Proposition 218.

CLMD 1687 is an established street lighting district and was fully funded from ad valorem property taxes prior to the passage of Proposition 13 (The People's Initiative to Limit Property Taxation) in 1978, which limited the maximum amount of ad valorem tax on real property. The ad valorem property taxes received under the guidelines established by the State Legislature subsequent to the passage of this amendment are not sufficient to pay the cost of the street lighting in the district. Therefore, CLD LLA-1 was formed under the Landscaping and Lighting Act of 1972 (section 22585 et seq.) to provide supplemental funding.

The Landscaping and Lighting Act of 1972 provides for the assessment of street lighting costs against the benefited properties within the lighting district in proportion to the

received. A method of distributing the street lighting costs on the basis of land use and land-use data compiled by the Assessor was approved by the Board of Supervisors on May 22, 1979, and amended on July 22, 1997, to include government-owned or -leased parcels. This report showing the approved method and the assessment units to be assessed on the various types of lots and parcels based on land usage is on file in the office of the Board of Supervisors and is made a part hereof by reference. The FY 2015-16 Annual Engineer's Report, which lists the base rate assessment for all zones within CLD LLA-1 and the total assessment amount to be collected from benefited parcels in each zone based on land use, is on file in the office of the Board of Supervisors and is made a part hereof by reference.

The parcels of real property affected are shown in Appendix A included herein. The parcels are more particularly described in a map prepared in accordance with section 327 of the California Revenue and Taxation Code, which is on file in the office of the Assessor and is made a part hereof by reference.

We believe that it would be in the public interest to install streetlights in the designated territory, as requested by the signers of Petition No. 15-412, and to provide for their operation and maintenance.

**COUNTY OF LOS ANGELES
DEPARTMENT OF PUBLIC WORKS
ENGINEER'S REPORT
PETITION NO. 15-412
(THIRD AVENUE)**

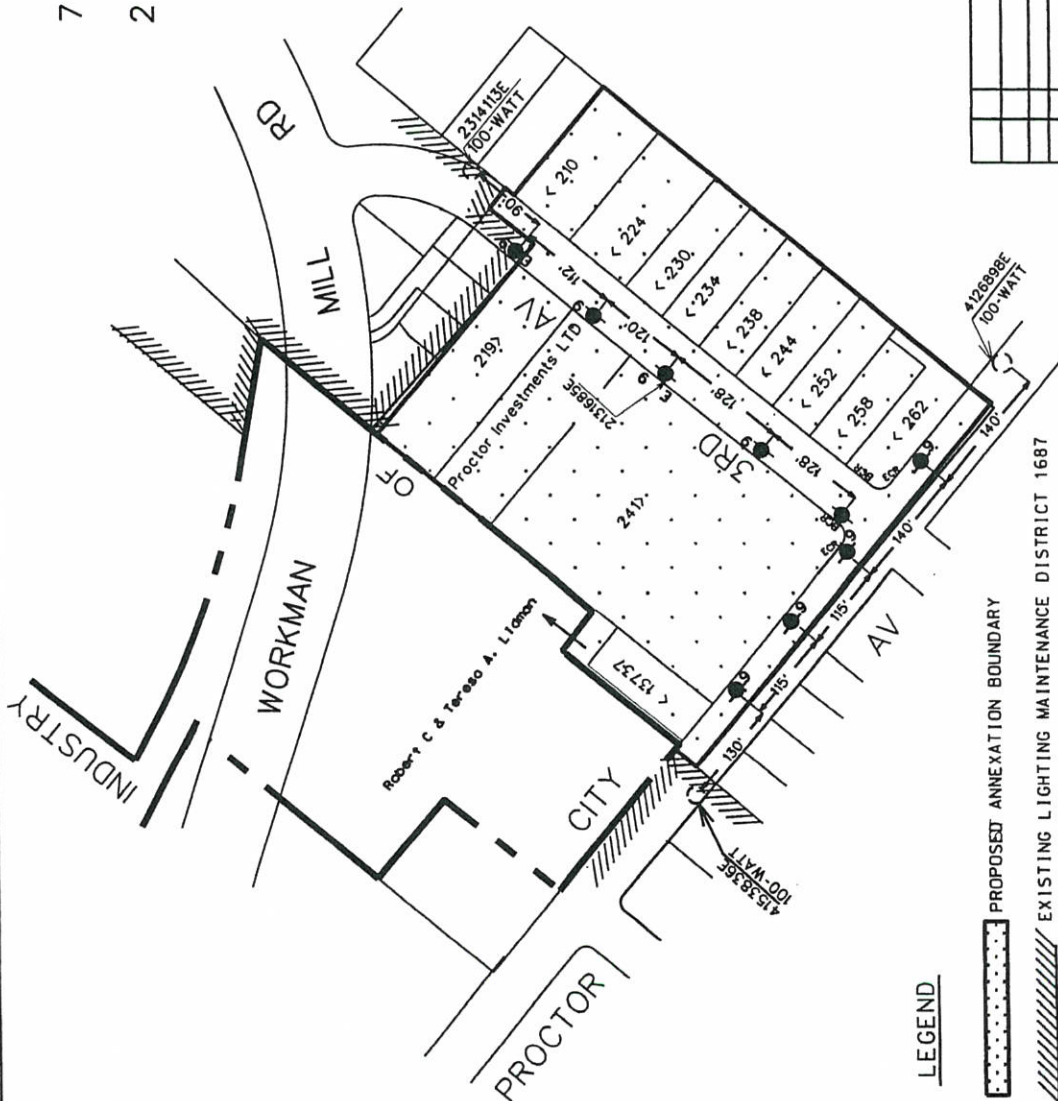
The following is a listing of the parcels of real property within the proposed annexation boundary using the Assessor's designation for each parcel.

Assessor's Parcel Numbers

8112 008 005	8206 009 018
8112 008 024	8206 009 019
8112 008 047	8206 009 020
8112 008 048	8206 009 021
8112 008 050	8206 009 022
8206 009 016	8206 009 023
8206 009 017	8206 009 024

9
7 - ●
2 - ●
()

TRA	APN
2228	8112 008 005
	8112 008 024
	8112 008 047
	8112 008 048
	8112 008 050
	8206 009 016
	8206 009 017
	8206 009 018
	8206 009 019
	8206 009 020
	8206 009 021
	8206 009 022
	8206 009 023
	8206 009 024



PETITION NO. 15-412

LOS ANGELES COUNTY DEPARTMENT OF PUBLIC WORKS
TRAFFIC AND LIGHTING DIVISION
STREET LIGHTING SECTION

3RD AVENUE
WORKMAN MILL ROAD TO PROCTOR AVENUE
AVOCADO HEIGHTS AREA

Revised By TAMIA KIRBY	Scoring 1=105'	Design By AP	Sup. Dist 1	I.G. 637-J4
Recommended		Date 01/19/2014		
Approved		Date 01/27/14		

PROPOSED ANNEXATION TO COUNTY LIGHTING
MAINTENANCE DISTRICT 1687 AND COUNTY LIGHTING
DISTRICT LLA-1 (UNINCORPORATED ZONE)

**COUNTY OF LOS ANGELES
DEPARTMENT OF PUBLIC WORKS
ENGINEER'S REPORT
PETITION NO. 41-614
(LOS MOLINOS STREET)**

On May 19, 2015, Item 42, the County of Los Angeles Board of Supervisors (Board of Supervisors) adopted a Resolution Initiating Proceedings for the annexation of territory to County Lighting Maintenance District (CLMD) 1687 and County Lighting District (CLD) Landscaping and Lighting Act-1 (LLA-1), Unincorporated Zone, pursuant to the California Streets and Highways Code Landscaping and Lighting Act of 1972, for the purpose of providing for the cost of installation, operating, and maintaining five streetlights on new wood poles within the territory proposed for annexation as shown on the diagram, plan, and specifications attached hereto. In addition, the Department of Public Works was ordered to prepare and file an Engineer's Report in accordance with section 22565 et seq. of the California Streets and Highways Code and Article XIII D, section 4(b) of the California Constitution. This report was prepared in response to that directive.

There will be no cost for the installation of the 5 streetlights on new wood poles. The annual operating cost of \$729 for the five 9,500 lumen high-pressure sodium vapor streetlights will be funded by CLMD 1687 and CLD LLA-1, Unincorporated Zone. An annual assessment for the operation and maintenance of the streetlights of \$5 per parcel for a single-family home, with proportionately higher assessments for other land uses, based on the approved Fiscal Year (FY) 2015-16 Annual Engineer's Report for CLD LLA-1, is proposed to be added to the FY 2016-17 tax bill of property owners whose parcels lie within the boundary of Petition No. 41-614. Each year thereafter, an annual assessment for the operation and maintenance costs of the streetlights, approved by the Board of Supervisors, will be added to the property tax bill.

With the passage of Proposition 218 (the Right to Vote on Taxes Act) by the California voters in November 1996, the levying of an assessment is now subject to certain provisions under Article XIII D of the California Constitution. This report conforms with the applicable provisions of Proposition 218.

CLMD 1687 is an established street lighting district and was fully funded from ad valorem property taxes prior to the passage of Proposition 13 (The People's Initiative to Limit Property Taxation) in 1978, which limited the maximum amount of ad valorem tax on real property. The ad valorem property taxes received under the guidelines established by the State Legislature subsequent to the passage of this amendment are not sufficient to pay the cost of the street lighting in the district. Therefore, CLD LLA-1 was formed under the Landscaping and Lighting Act of 1972 (section 22585 et seq.) to provide supplemental funding.

The Landscaping and Lighting Act of 1972 provides for the assessment of street lighting costs against the benefited properties within the lighting district in proportion to the benefits received. A method of distributing the street lighting costs on the basis of land

use and land-use data compiled by the Assessor was approved by the Board of Supervisors on May 22, 1979, and amended on July 22, 1997, to include government-owned or -leased parcels. This report showing the approved method and the assessment units to be assessed on the various types of lots and parcels based on land usage is on file in the office of the Board of Supervisors and is made a part hereof by reference. The FY 2015-16 Annual Engineer's Report, which lists the base rate assessment for all zones within CLD LLA-1 and the total assessment amount to be collected from benefited parcels in each zone based on land use, is on file in the office of the Board of Supervisors and is made a part hereof by reference.

The parcels of real property affected are shown in Appendix A included herein. The parcels are more particularly described in a map prepared in accordance with section 327 of the California Revenue and Taxation Code, which is on file in the office of the Assessor and is made a part hereof by reference.

We believe that it would be in the public interest to install streetlights in the designated territory, as requested by the signers of Petition No. 41-614, and to provide for their operation and maintenance.

**COUNTY OF LOS ANGELES
DEPARTMENT OF PUBLIC WORKS
ENGINEER'S REPORT
PETITION NO. 41-614
(LOS MOLINOS STREET)**

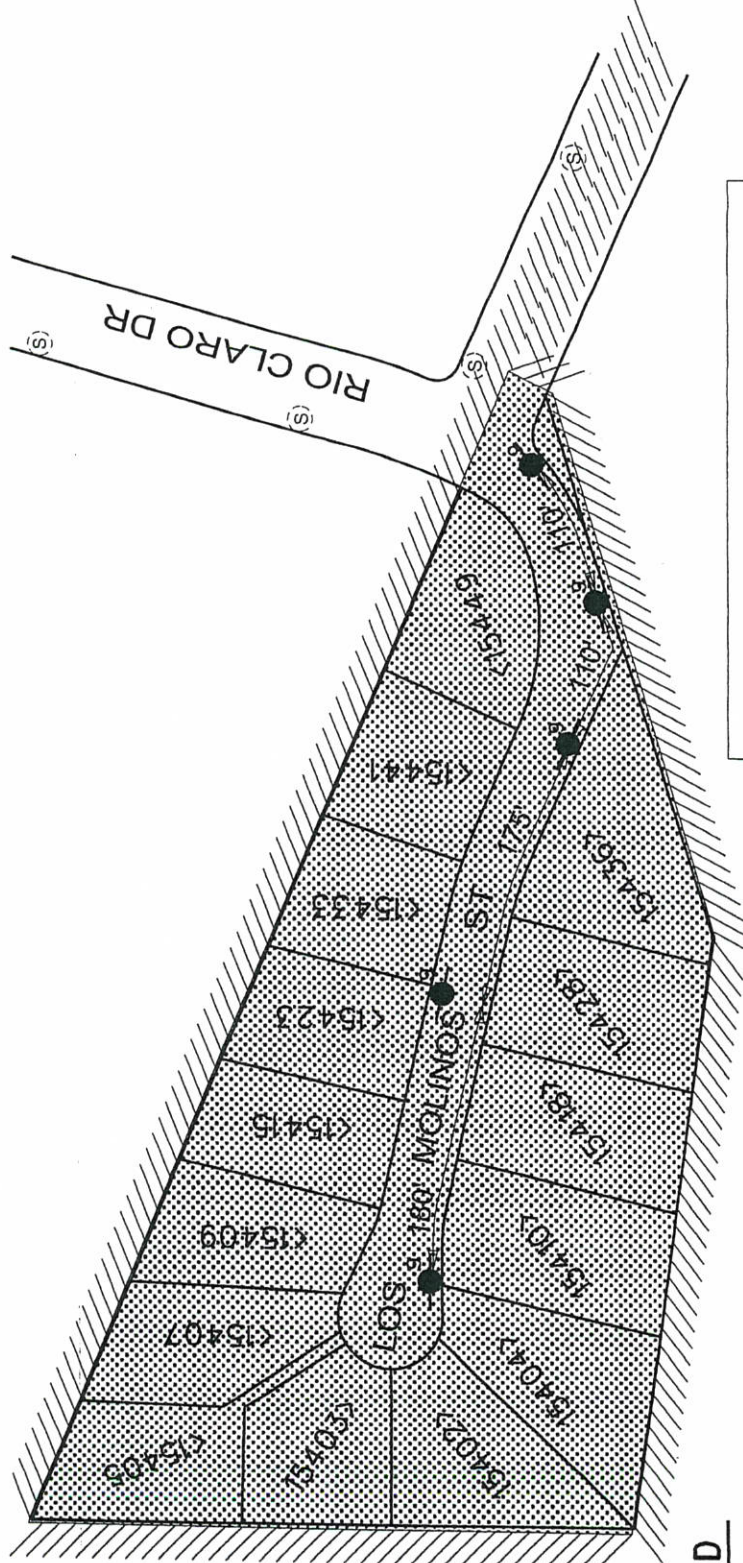
The following is a listing of the parcels of real property within the proposed annexation boundary using the Assessor's designation for each parcel.

Assessor's Parcel Numbers

8290 008 001	8290 008 009
8290 008 002	8290 008 010
8290 008 003	8290 008 011
8290 008 004	8290 008 012
8290 008 005	8290 008 013
8290 008 006	8290 008 014
8290 008 007	8290 008 015
8290 008 008	8290 008 016

NOTE: MAY REQUIRE TWO EASEMENTS FROM 15404 AND 15410 TO ENERGIZE THE PROPOSED POLES

TRA
4390
APN
8290 008 001
8290 008 002
8290 008 003
8290 008 004
8290 008 005
8290 008 006
8290 008 007
8290 008 008
8290 008 009
8290 008 010
8290 008 011
8290 008 012
8290 008 013
8290 008 014
8290 008 015
8290 008 016



LEGEND

- PROPOSED ANNEXATION BOUNDARY
- EXISTING LIGHTING DISTRICT CLMD 1687
- PROPOSED 9,500 LUMEN (100 WATT) H.P.S.V. LAMP (FLAT GLASS) ON WOOD POLE.
- EXISTING STREET LIGHTS ON STEEL POLES.

28' WIDE STREET CURB TO CURB

PETITION 41-614

COUNTY OF LOS ANGELES DEPARTMENT OF PUBLIC WORKS TRAFFIC AND LIGHTING DIVISION STREET LIGHTING SECTION			
LOS MOLINOS STREET SOUTH OF RIO CLARO DRIVE HACIENDA HEIGHTS AREA			
DRAWN BY ZAHRA KARIMI	SCALE 1"=40'	SUP. 4	DESIGNED BY NICK ZERMAN
RECOMMENDED BY NICK ZERMAN	DATE 11/25/2014	Y.C. 67645	
APPROVED BY [Signature]		DATE 10/20/14	

PROPOSED ANNEXATION TO COUNTY LIGHTING MAINTENANCE DISTRICT 1687 AND COUNTY LIGHTING DISTRICT LLA-1, UNINCORPORATED ZONE.

**COUNTY OF LOS ANGELES
DEPARTMENT OF PUBLIC WORKS
ENGINEER'S REPORT
PETITION NO. 39-613
(LA CRESCENTA AVENUE)**

On May 19, 2015, Item 42, the County of Los Angeles Board of Supervisors (Board of Supervisors) adopted a Resolution Initiating Proceedings for the annexation of territory to County Lighting Maintenance District (CLMD) 1687 and County Lighting District (CLD) Landscaping and Lighting Act-1 (LLA-1), Unincorporated Zone, pursuant to the California Streets and Highways Code Landscaping and Lighting Act of 1972, for the purpose of providing for the cost of installation, operating, and maintaining 14 streetlights on new wood poles within the territory proposed for annexation as shown on the diagram, plan, and specifications attached hereto. In addition, the Department of Public Works was ordered to prepare and file an Engineer's Report in accordance with section 22565 et seq. of the California Streets and Highways Code and Article XIII D, section 4(b) of the California Constitution. This report was prepared in response to that directive.

There will be no cost for the installation of the 14 streetlights on new wood poles. The annual operating cost of \$2,040 for the fourteen 9,500 lumen high-pressure sodium vapor streetlights will be funded by CLMD 1687 and CLD LLA-1, Unincorporated Zone. An annual assessment for the operation and maintenance of the streetlights of \$5 per parcel for a single-family home, with proportionately higher assessments for other land uses, based on the approved Fiscal Year (FY) 2015-16 Annual Engineer's Report for CLD LLA-1, is proposed to be added to the FY 2016-17 tax bill of property owners whose parcels lie within the boundary of Petition No. 39-613. Each year thereafter, an annual assessment for the operation and maintenance costs of the streetlights, approved by the Board of Supervisors, will be added to the property tax bill.

With the passage of Proposition 218 (the Right to Vote on Taxes Act) by the California voters in November 1996, the levying of an assessment is now subject to certain provisions under Article XIII D of the California Constitution. This report conforms with the applicable provisions of Proposition 218.

CLMD 1687 is an established street lighting district and was fully funded from ad valorem property taxes prior to the passage of Proposition 13 (The People's Initiative to Limit Property Taxation) in 1978, which limited the maximum amount of ad valorem tax on real property. The ad valorem property taxes received under the guidelines established by the State Legislature subsequent to the passage of this amendment are not sufficient to pay the cost of the street lighting in the district. Therefore, CLD LLA-1 was formed under the Landscaping and Lighting Act of 1972 (section 22585 et seq.) to provide supplemental funding.

The Landscaping and Lighting Act of 1972 provides for the assessment of street lighting costs against the benefited properties within the lighting district in proportion to the benefits received. A method of distributing the street lighting costs on the basis of land

use and land-use data compiled by the Assessor was approved by the Board of Supervisors on May 22, 1979, and amended on July 22, 1997, to include government-owned or -leased parcels. This report showing the approved method and the assessment units to be assessed on the various types of lots and parcels based on land usage is on file in the office of the Board of Supervisors and is made a part hereof by reference. The FY 2015-16 Annual Engineer's Report, which lists the base rate assessment for all zones within CLD LLA-1 and the total assessment amount to be collected from benefited parcels in each zone based on land use, is on file in the office of the Board of Supervisors and is made a part hereof by reference.

The parcels of real property affected are shown in Appendix A included herein. The parcels are more particularly described in a map prepared in accordance with section 327 of the California Revenue and Taxation Code, which is on file in the office of the Assessor and is made a part hereof by reference.

We believe that it would be in the public interest to install streetlights in the designated territory, as requested by the signers of Petition No. 36-613, and to provide for their operation and maintenance.

APPENDIX A

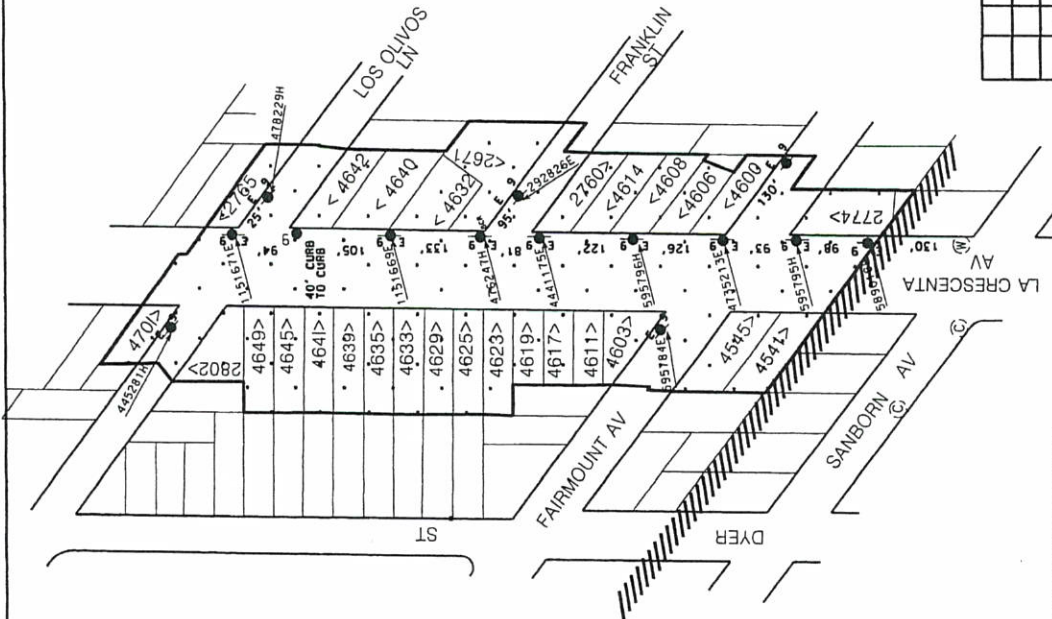
**COUNTY OF LOS ANGELES
DEPARTMENT OF PUBLIC WORKS
ENGINEER'S REPORT
PETITION NO. 39-613
(LA CRESCENTA AVENUE)**

The following is a listing of the parcels of real property within the proposed annexation boundary using the Assessor's designation for each parcel.

Assessor's Parcel Numbers

5803 007 005	5803 009 015
5803 009 002	5803 010 021
5803 009 003	5803 010 022
5803 009 004	5803 013 024
5803 009 005	5803 014 010
5803 009 006	5803 014 011
5803 009 007	5803 014 012
5803 009 008	5803 014 013
5803 009 009	5803 014 015
5803 009 010	5803 014 018
5803 009 011	5803 014 019
5803 009 012	5803 014 046
5803 009 013	5803 014 047
5803 009 014	5803 016 001

TRA
4103
APN
5803 007 005
5803 009 002
5803 009 003
5803 009 004
5803 009 005
5803 009 006
5803 009 007
5803 009 008
5803 009 009
5803 009 010
5803 009 011
5803 009 012
5803 009 013
5803 009 014
5803 009 015
5803 010 021
5803 010 022
5803 013 024
5803 014 010
5803 014 011
5803 014 012
5803 014 013
5803 014 015
5803 014 018
5803 014 019
5803 014 046
5803 014 047
5803 016 001



LEGEND

--- PROPOSED ANNEXATION BOUNDARY

EXISTING LIGHTING DISTRICT CLMD 1687

PROPOSED ANNEXATION TO COUNTY LIGHTING
MAINTENANCE DISTRICT 1687 AND COUNTY LIGHTING
DISTRICT LLA-1 (UNINCORPORATED ZONE)

- 13- E-9 PROPOSED 9+500 LUMEN (100 WATT) H.P.S.V
LAMS ON EXISTING WOOD POLES (FLAT GLASS).
- 1- 9 PROPOSED 9+500 LUMEN (100 WATT) H.P.S.V
LAMP ON NEW WOOD POLE (FLAT GLASS).
- () EXISTING STREET LIGHTS

PETITION NO. 39-613

LOS ANGELES COUNTY DEPARTMENT OF PUBLIC WORKS TRAFFIC AND LIGHTING DIVISION			
STREET LIGHTING SECTION			
LA CRESCENTA AV LOS OLIVOS LN TO SOUTH OF FAIRMOUNT AV LA CRESCENTA AREA			
Drawn By Z. J. J. J.	Scale 1"=50'	Design By S. J. J. J.	Sup. Dist. 534-G1
Recommended			Date 09/16/2014
Approved			Date

**COUNTY OF LOS ANGELES
DEPARTMENT OF PUBLIC WORKS
ENGINEER'S REPORT
PETITION NO. 75-1113
(GRAYDON AVENUE)**

On May 19, 2015, Item 42, the County of Los Angeles Board of Supervisors (Board of Supervisors) adopted a Resolution Initiating Proceedings for the annexation of territory to County Lighting Maintenance District (CLMD) 1687 and County Lighting District (CLD) Landscaping and Lighting Act-1 (LLA-1), Unincorporated Zone, pursuant to the California Streets and Highways Code Landscaping and Lighting Act of 1972, for the purpose of providing for the cost of operating and maintaining the seven streetlights on new and existing wood poles within the territory proposed for annexation as shown on the diagram, plan, and specifications attached hereto. In addition, the Department of Public Works was ordered to prepare and file an Engineer's Report in accordance with section 22565 et seq. of the California Streets and Highways Code and Article XIII D, section 4(b) of the California Constitution. This report was prepared in response to that directive.

There will be no cost for the installation of the 7 streetlights on new and existing wood poles. The annual operating cost of \$1,020 for the seven 9,500 lumen high-pressure sodium vapor streetlights will be funded by CLMD 1687 and CLD LLA-1, Unincorporated Zone. An annual assessment for the operation and maintenance of the streetlights of \$5 per parcel for a single-family home, with proportionately higher assessments for other land uses, based on the approved Fiscal Year (FY) 2015-16 Annual Engineer's Report for CLD LLA-1, is proposed to be added to the FY 2016-17 tax bill of property owners whose parcels lie within the boundary of Petition No.75-1113. Each year thereafter, an annual assessment for the operation and maintenance costs of the streetlights, approved by the Board of Supervisors, will be added to the property tax bill.

With the passage of Proposition 218 (the Right to Vote on Taxes Act) by the California voters in November 1996, the levying of an assessment is now subject to certain provisions under Article XIII D of the California Constitution. This report conforms with the applicable provisions of Proposition 218.

CLMD 1687 is an established street lighting district and was fully funded from ad valorem property taxes prior to the passage of Proposition 13 (The People's Initiative to Limit Property Taxation) in 1978, which limited the maximum amount of ad valorem tax on real property. The ad valorem property taxes received under the guidelines established by the State Legislature subsequent to the passage of this amendment are not sufficient to pay the cost of the street lighting in the district. Therefore, CLD LLA-1 was formed under the Landscaping and Lighting Act of 1972 (section 22585 et seq.) to provide supplemental funding.

The Landscaping and Lighting Act of 1972 provides for the assessment of street lighting costs against the benefited properties within the lighting district in proportion to the benefits received. A method of distributing the street lighting costs on the basis of land use and land-use data compiled by the Assessor was approved by the Board of Supervisors on May 22, 1979, and amended on July 22, 1997, to include government-owned or -leased parcels. This report showing the approved method and the assessment units to be assessed on the various types of lots and parcels based on land usage is on file in the office of the Board of Supervisors and is made a part hereof by reference. The FY 2016-17 Annual Engineer's Report, which lists the base rate assessment for all zones within CLD LLA-1 and the total assessment amount to be collected from benefited parcels in each zone based on land use, is on file in the office of the Board of Supervisors and is made a part hereof by reference.

The parcels of real property affected are shown in Appendix A included herein. The parcels are more particularly described in a map prepared in accordance with section 327 of the California Revenue and Taxation Code, which is on file in the office of the Assessor and is made a part hereof by reference.

We believe that it would be in the public interest to install streetlights in the designated territory, as requested by the signers of Petition No. 75-1113, and to provide for their operation and maintenance.

**COUNTY OF LOS ANGELES
DEPARTMENT OF PUBLIC WORKS
ENGINEER'S REPORT
PETITION NO. 75-1113
(GRAYDON AVENUE)**

The following is a listing of the parcels of real property within the proposed annexation boundary using the Assessor's designation for each parcel.

Assessor's Parcel Numbers

8510 007 008	8510 009 018
8510 007 009	8510 009 019
8510 007 010	8510 009 020
8510 007 011	8510 009 021
8510 007 012	8510 010 003
8510 007 013	8510 010 004
8510 007 014	8510 010 005
8510 008 002	8510 010 006
8510 008 022	8510 010 007
8510 008 023	8510 010 008
8510 009 002	8510 010 009
8510 009 013	8510 010 010
8510 009 014	8510 010 011
8510 009 015	8510 010 012
8510 009 016	8510 010 013
8510 009 017	8510 010 014

1. THE MAST ARMS AND BRACKETS SHALL BE PERPENDICULAR TO THE CURB FACE. USE 4 FOOT MAST ARMS UNLESS OTHERWISE SPECIFIED.
2. ALL WIRING SHALL BE OVERHEAD.
3. EXISTING LIGHTING SYSTEMS TO REMAIN IN OPERATION DURING ANY MODIFICATION.
4. LUMINAIRE SHALL HAVE A 25 FOOT MOUNTING HEIGHT.

6-9 PROPOSE 9.500 LUMEN (100-WATT) H.P.S.V LAMPS ON NEW WOOD POLES (FLAT GLASS).

1-9 PROPOSE 9.500 LUMEN (100-WATT) H.P.S.V LAMP ON A NEW WOOD POLE WITH A 16 FOOT MAST ARM PERPENDICULAR TO ALTERN STREET AND A 4 FT MAST ARM FACING GREYDON AVENUE (FLAT GLASS).

(W) EXISTING STREET LIGHTS ON WOOD POLES.

TRA	6264	APN's
8510 007 008	8510 009 018	8510 007 008
8510 007 009	8510 009 019	8510 007 009
8510 007 010	8510 009 020	8510 007 010
8510 007 011	8510 009 021	8510 007 011
8510 007 012	8510 010 003	8510 007 012
8510 007 013	8510 010 004	8510 007 013
8510 007 014	8510 010 005	8510 007 014
8510 008 002	8510 010 006	8510 008 002
8510 008 022	8510 010 007	8510 008 022
8510 008 023	8510 010 008	8510 008 023
8510 009 002	8510 010 009	8510 009 002
8510 009 013	8510 010 010	8510 009 013
8510 009 014	8510 010 011	8510 009 014
8510 009 015	8510 010 012	8510 009 015
8510 009 016	8510 010 013	8510 009 016
8510 009 017	8510 010 014	8510 009 017

PROPOSED ANNEXATION BOUNDARY

EXISTING LIGHTING MAINTENANCE DISTRICT 1687

CITY/COUNTY BOUNDARY

PROPOSED ANNEXATION TO COUNTY LIGHTING MAINTENANCE DISTRICT 1687 AND COUNTY LIGHTING DISTRICT LLA-1 (UNINCORPORATED ZONE)

COUNTY OF LOS ANGELES DEPARTMENT OF PUBLIC WORKS
TRAFFIC AND LIGHTING DIVISION
STREET LIGHTING SECTION

	COUNTY OF LOS ANGELES DEPARTMENT OF PUBLIC WORKS
	TRAFFIC AND LIGHTING DIVISION
	STREET LIGHTING SECTION
	GRAYDON AVENUE ALTERN STREET TO CAMIBNO REAL MONROVIA AREA
DRAWN BY	SCALE
F.C.	N.T.S.
SUP	5
DESTINED BY	T.O.
F.C.	567-C7
RECOMMENDED BY	SHEET
DATE	1 OF 1
DATE MK	
REVISONS	

**COUNTY OF LOS ANGELES
BOARD OF SUPERVISORS
RESOLUTION OF INTENTION TO ANNEX TERRITORIES TO
COUNTY LIGHTING MAINTENANCE DISTRICT 1687 AND
COUNTY LIGHTING DISTRICT LANDSCAPING AND LIGHTING ACT-1,
UNINCORPORATED ZONE, AND ORDER THE LEVYING OF ASSESSMENTS
WITHIN THE ANNEXED TERRITORIES FOR
FISCAL YEAR 2016-17**

WHEREAS, the County of Los Angeles Board of Supervisors (Board of Supervisors) previously approved and filed Petition Nos. 15-412, 41-614, 39-613, and 75-1113, requesting annexation of territories to County Lighting Maintenance District 1687 and County Lighting District Landscaping and Lighting Act-1 (LLA-1), Unincorporated Zone, to provide for the installation, operation, and maintenance of streetlights within the annexed territories, and assessments for the costs thereof; and

WHEREAS, the Board of Supervisors on May 3, 2016, has approved the Engineer's Reports for said territories, which contains descriptions of the improvements, estimated installation and operating costs, diagram of the territories to be annexed, and recommended assessments as required by law.

NOW, THEREFORE, BE IT RESOLVED, by the Board of Supervisors of the County of Los Angeles, State of California, that:

SECTION 1. The public interest and convenience require and it is the intention of the Board of Supervisors to order the benefited territories hereinafter described, all of which territory lies in the County of Los Angeles, be annexed to County Lighting Maintenance District 1687 pursuant to California Streets and Highways Code section 5837.

SECTION 2. The public interest and convenience require and it is the intention of the Board of Supervisors to order the benefited territories be annexed to County Lighting District LLA-1, Unincorporated Zone, pursuant to California Streets and Highways Code section 22605.

SECTION 3. The public interest and convenience require and it is the intention of the Board of Supervisors to order the expense necessary for the operation, maintenance, repairs, replacement, electric current, care, supervision, and all other items necessary for the proper operation and maintenance of street lighting systems proposed within the annexed territories shall be assessed in Fiscal Year 2016-17 upon each lot or parcel of land lying within the annexed territories in proportion to the estimated benefit received from the proposed street lighting improvements and which should be assessed to pay the expenses of the operation and maintenance of said improvements. An annual Engineer's Report, approved by the Board each fiscal year, establishes the annual base rate assessment for all zones within County Lighting District LLA-1. For Fiscal Year 2015-16, the annual base rate assessment for the

Unincorporated Zone is \$5 for a single-family residence, with proportionately higher assessment rates for other land uses. This annual assessment for the operation and maintenance of streetlights is proposed to be added to the property tax bill of benefited parcels within the boundary of County Lighting District LLA-1, Unincorporated Zone, in Fiscal Year 2016-17. Each year thereafter, an assessment for operation and maintenance costs approved by the Board will be added to the property tax bill.

The Engineer's Report prepared for each petitioned territory contains a full and detailed description of the proposed improvements, a description of the lots or parcels of land to be annexed, the estimated costs of operation and maintenance, a diagram of the territory to be annexed, and the recommended assessment on each lot or parcel of land included therein.

SECTION 4. The boundaries of the territories proposed for annexation consists of the areas shown on the attached maps.

SECTION 5. The proposed assessment is subject to majority approval of the property owners. A ballot and public hearing notice will be sent to all property owners within the areas proposed for annexation at least 45 days prior to the date of the public hearing in the form and manner specified by California Government Code section 53753. The ballots will be weighted by the amount of assessment to be paid by each property owner. The territory will not be annexed and the proposed assessment will be abandoned if the weighted majority of ballots submitted are opposed to the assessment.

SECTION 6. The amounts to be assessed for the expense of such installation, operation, and maintenance of the work or improvements described above shall be levied and collected in the same manner and by the same officers as taxes for County purposes.

SECTION 7. Proceedings for the levying of assessments shall be taken in accordance with the Landscaping and Lighting Act of 1972 (California Streets and Highways Code Division 15, Part 2) and California Government Code section 53753.

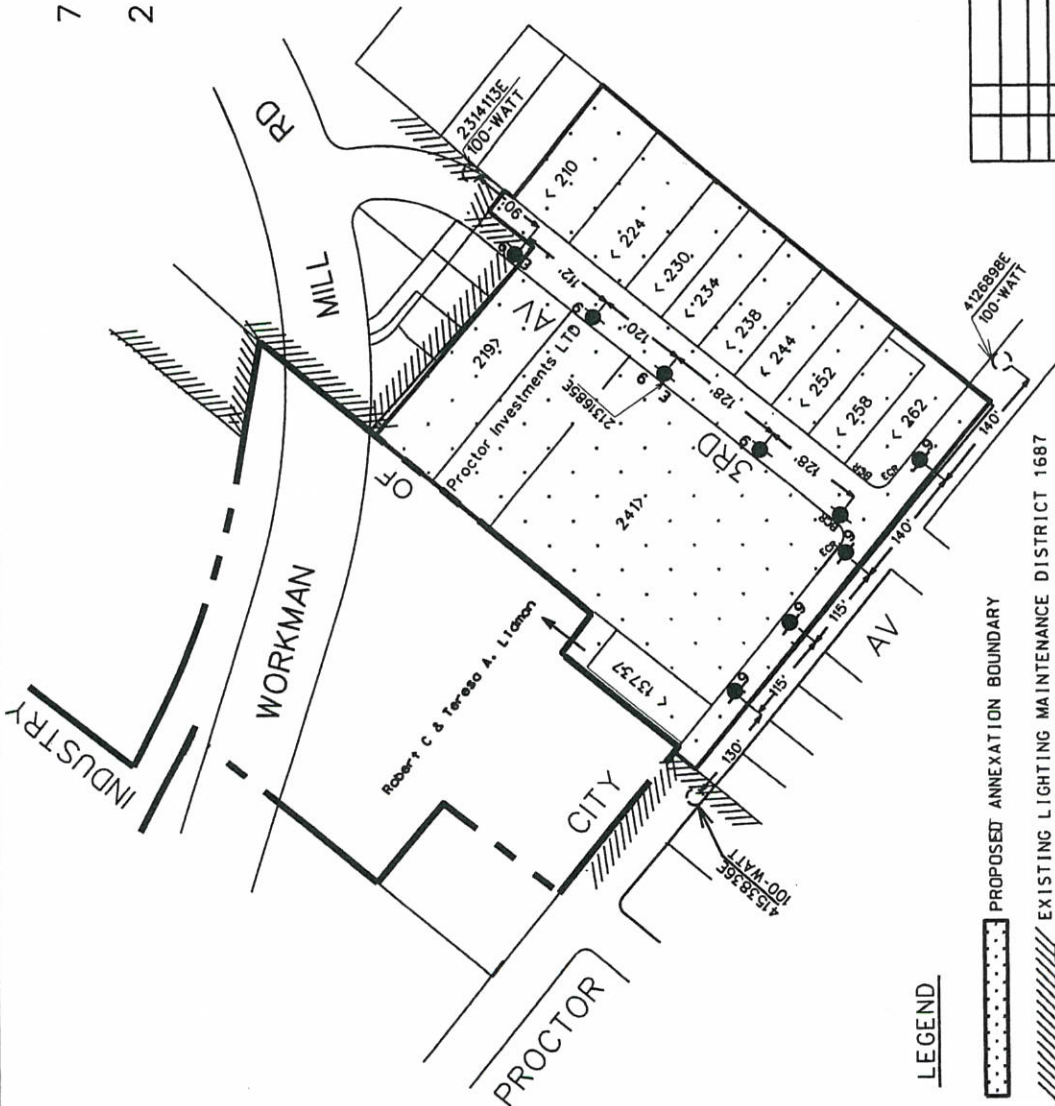
SECTION 8. A public hearing will be held by the Board of Supervisors to consider the annexation of territories to County Lighting Maintenance District 1687 and County Lighting District LLA-1, Unincorporated Zone, and the levying of assessments within the territories proposed to be annexed. Said hearing will be held on Tuesday, June 28, 2016, at 9:30 a.m., at the Chambers of the Board of Supervisors of the County of Los Angeles, in Room 381B of the Kenneth Hahn Hall of Administration, 500 West Temple Street (corner of Temple Street at Grand Avenue), Los Angeles, California 90012.

SECTION 9. The Executive Officer of the Board of Supervisors shall give notice of the public hearing, in the form and manner specified in California Streets and Highways Code section 5838, to be published once a week for two successive weeks in the _____, a newspaper published and circulated in the County of Los Angeles, which is hereby designated for that purpose. Such publication to be completed at least 10 days prior to the date of said hearing.

SECTION 10. The Executive Officer of the Board of Supervisors shall cause notice of said hearing to be posted in the form and manner specified by California Streets and Highways Code section 5838 at least 10 days prior to date of hearing.

- 7 - 9 PROPOSED 9,500 LUMEN (100 WATT) H.P.S.V LAMPS ON NEW WOOD POLES (FLAT GLASS).
- 2 - 9 PROPOSED 9,500 LUMEN (100 WATT) H.P.S.V LAMPS ON EXISTING WOOD POLES (FLAT GLASS).
- () EXISTING 9,500 LUMEN (100 WATT) H.P.S.V LAMPS ON CONCRETE POLES

TRA	APN
2228	
8112 008 005	
8112 008 024	
8112 008 047	
8112 008 048	
8112 008 050	
8206 009 016	
8206 009 017	
8206 009 018	
8206 009 019	
8206 009 020	
8206 009 021	
8206 009 022	
8206 009 023	
8206 009 024	



LEGEND

--- PROPOSED ANNEXATION BOUNDARY

EXISTING LIGHTING MAINTENANCE DISTRICT 1687

--- CITY/COUNTY BOUNDARY

PROPOSED ANNEXATION TO COUNTY LIGHTING MAINTENANCE DISTRICT 1687 AND COUNTY LIGHTING DISTRICT LLA-1 (UNINCORPORATED ZONE)

PETITION NO. 15-412

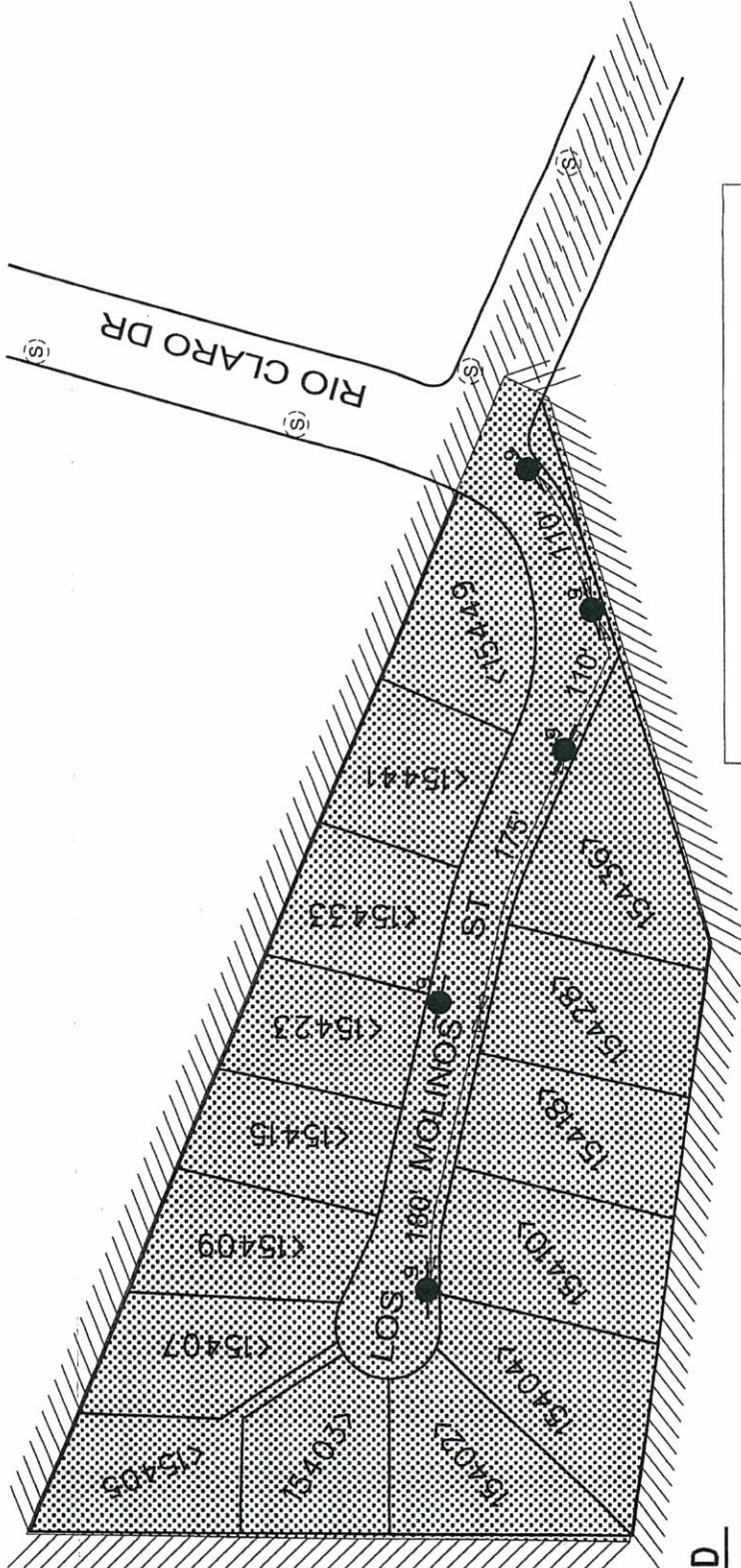
LOS ANGELES COUNTY DEPARTMENT OF PUBLIC WORKS
TRAFFIC AND LIGHTING DIVISION
STREET LIGHTING SECTION

3RD AVENUE
WORKMAN MILL ROAD TO PROCTOR AVENUE
AVOCADO HEIGHTS AREA

Revised By	Scale	Issued By	Sup. Dist	Date
21111111	1"=100'	21111111	1	08/19/2014
Recommended				
Approved				

NOTE: MAY REQUIRE TWO EASEMENTS FROM 15404 AND 15410 TO ENERGIZE THE PROPOSED POLES

TRA
4390
APN
8290 008 001
8290 008 002
8290 008 003
8290 008 004
8290 008 005
8290 008 006
8290 008 007
8290 008 008
8290 008 009
8290 008 010
8290 008 011
8290 008 012
8290 008 013
8290 008 014
8290 008 015
8290 008 016



LEGEND

- PROPOSED ANNEXATION BOUNDARY
- EXISTING LIGHTING DISTRICT CLMD 1687
- PROPOSED 9,500 LUMEN (100 WATT) H.P.S.V. LAMP (FLAT GLASS) ON WOOD POLE.
- EXISTING STREET LIGHTS ON STEEL POLES.

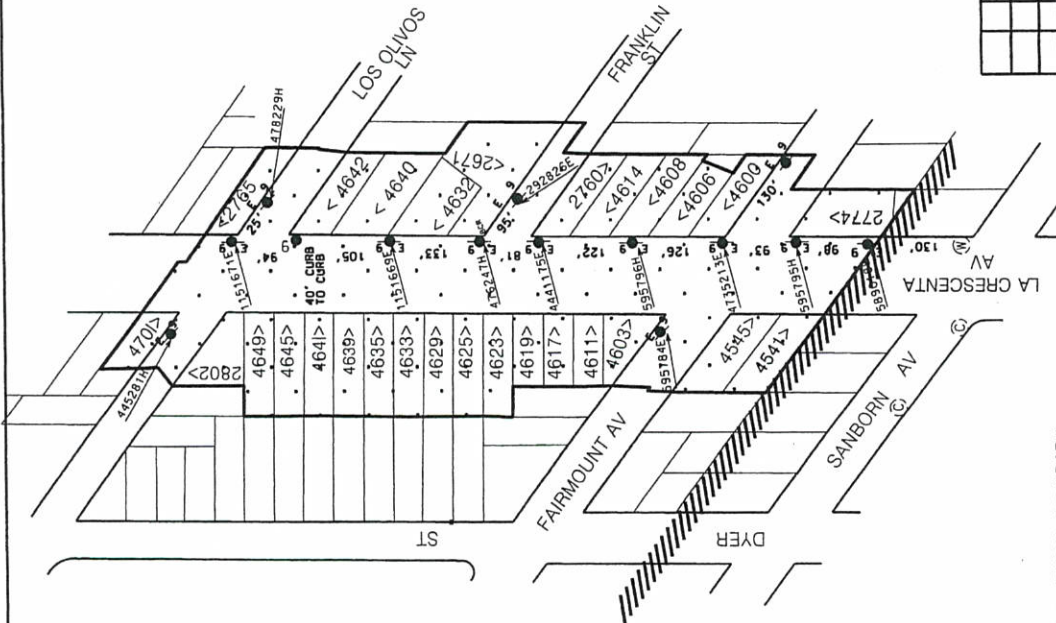
28' WIDE STREET CURB TO CURB

PETITION 41-614

COUNTY OF LOS ANGELES DEPARTMENT OF PUBLIC WORKS TRAFFIC AND LIGHTING DIVISION STREET LIGHTING SECTION	
LOS MOLINOS STREET SOUTH OF RIO CLARO DRIVE HACIENDA HEIGHTS AREA	DESIGNED BY NICK ZERNAN DATE 11/25/2014
DRAWN BY ZAHRA KARIMI SCALE 1" = 40'	SUP. 4 T.C. 67845
RECOMMENDED BY NICK ZERNAN DATE 11/25/2014	APPROVED BY NICK ZERNAN DATE 10/20/14
DATE	DESCRIPTION
REVISIONS	

PROPOSED ANNEXATION TO COUNTY LIGHTING MAINTENANCE DISTRICT 1687 AND COUNTY LIGHTING DISTRICT LLA-1, UNINCORPORATED ZONE.

TRA
4103
APN
5803 007 005
5803 009 002
5803 009 003
5803 009 004
5803 009 005
5803 009 006
5803 009 007
5803 009 008
5803 009 009
5803 009 010
5803 009 011
5803 009 012
5803 009 013
5803 009 014
5803 009 015
5803 010 021
5803 010 022
5803 013 024
5803 014 010
5803 014 011
5803 014 012
5803 014 013
5803 014 015
5803 014 018
5803 014 019
5803 014 046
5803 014 047
5803 016 001



LEGEND

--- PROPOSED ANNEXATION BOUNDARY

EXISTING LIGHTING DISTRICT CLMD 1687

PROPOSED ANNEXATION TO COUNTY LIGHTING
MAINTENANCE DISTRICT 1687 AND COUNTY LIGHTING
DISTRICT LLA-1 (UNINCORPORATED ZONE)

- 13- E-9 PROPOSED 9,500 LUMEN (100 WATT) H.P.S.V
LAMPS ON EXISTING WOOD POLES (FLAT GLASS).
- 1- 9 PROPOSED 9,500 LUMEN (100 WATT) H.P.S.V
LAMP ON NEW WOOD POLE (FLAT GLASS).
- (C) EXISTING STREET LIGHTS

PETITION NO. 39-613

LOS ANGELES COUNTY DEPARTMENT OF PUBLIC WORKS
TRAFFIC AND LIGHTING DIVISION
STREET LIGHTING SECTION

LA CRESCENTA AV
LOS OLIVOS LN TO SOUTH OF FAIRMOUNT AV
LA CRESCENTA AREA

Design by	Scale	Sup. Dist.	Date
03/16/2014	03/16/2014	03/16/2014	03/16/2014

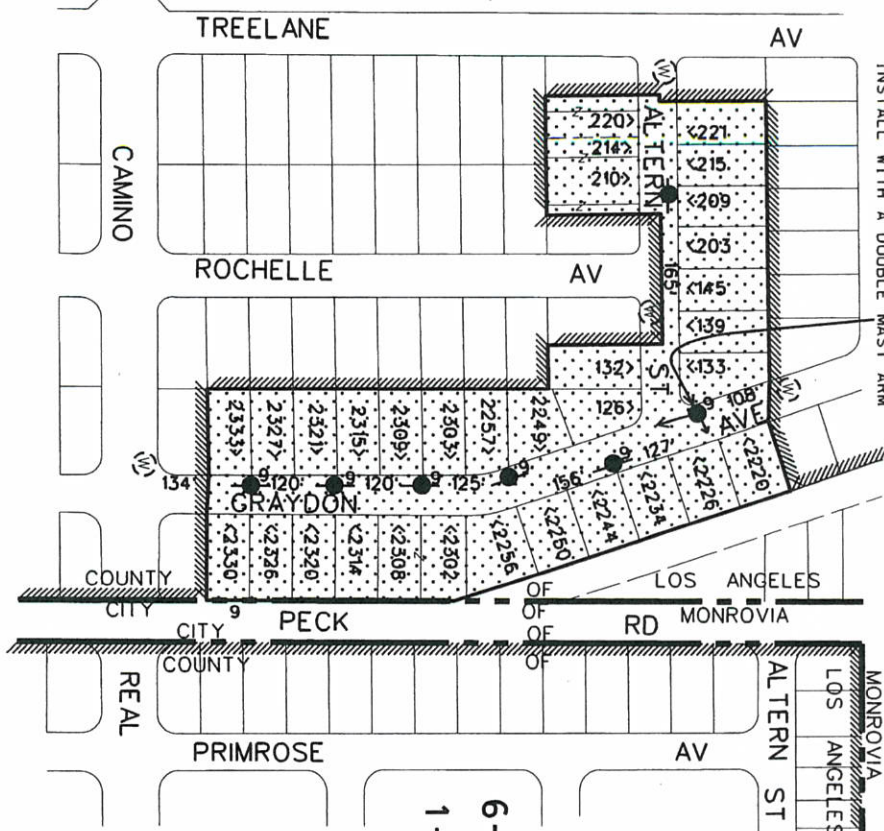
MONROVIA
LOS ANGELES

1. THE MAST ARMS AND BRACKETS SHALL BE PERPENDICULAR TO THE CURB FACE. USE 4 FOOT MAST ARMS UNLESS OTHERWISE SPECIFIED.
2. ALL WIRING SHALL BE OVERHEAD.
3. EXISTING LIGHTING SYSTEMS TO REMAIN IN OPERATION DURING ANY MODIFICATION.
4. LUMINAIRE SHALL HAVE A 25 FOOT MOUNTING HEIGHT.




LEGEND

- 6-9 PROPOSE 9,500 LUMEN (100-WATT) H.P.S.V LAMPS ON NEW WOOD POLES (FLAT GLASS).
- 1-9 PROPOSE 9,500 LUMEN (100-WATT) H.P.S.V LAMP ON A NEW WOOD POLE WITH A 16 FOOT MAST ARM PERPENDICULAR TO ALTERN STREET AND A 4 FT MAST ARM FACING GREYDON AVENUE (FLAT GLASS).
- (M) EXISTING STREET LIGHTS ON WOOD POLES.

TRA	6264	APN'S
8510 007 008	8510 009 018	8510 007 008
8510 007 009	8510 009 019	8510 007 009
8510 007 010	8510 009 020	8510 007 010
8510 007 011	8510 009 021	8510 007 011
8510 007 012	8510 010 003	8510 007 012
8510 007 013	8510 010 004	8510 007 013
8510 007 014	8510 010 005	8510 007 014
8510 008 002	8510 010 006	8510 008 002
8510 008 022	8510 010 007	8510 008 022
8510 008 023	8510 010 008	8510 008 023
8510 009 002	8510 010 009	8510 009 002
8510 009 013	8510 010 010	8510 009 013
8510 009 014	8510 010 011	8510 009 014
8510 009 015	8510 010 012	8510 009 015
8510 009 016	8510 010 013	8510 009 016
8510 009 017	8510 010 014	8510 009 017



LEGEND

-  PROPOSED ANNEXATION BOUNDARY
 EXISTING LIGHTING MAINTENANCE DISTRICT 1687
 CITY/COUNTY BOUNDARY
 PROPOSED ANNEXATION TO COUNTY LIGHTING
 MAINTENANCE DISTRICT 1687 AND COUNTY LIGHTING
 DISTRICT LLA-1 (UNINCORPORATED ZONE)

PETITION NO. 75-1113

OF LOS ANGELES DEPARTMENT OF PUBLIC WORKS
TRAFFIC AND LIGHTING DIVISION
STREET LIGHTING SECTION

GRAYDON AVENUE
ALTERN STREET TO CAMINO REAL

COUNTY OF LOS ANGELES DEPARTMENT OF PUBLIC WORKS									
TRAFFIC AND LIGHTING DIVISION									
STREET LIGHTING SECTION									
GRAYDON AVENUE									
ALTERN STREET TO CAMINO REAL									
MONROVIA AREA									
DRAWN BY		SCALE		SUP.		DESIGNED BY		I.G.	
F.C.		N.T.S.		5		F.C.		567-07	
DATE		DATE		SHEET		1		OF 1	
RECOMMENDED BY									
REVISIONS									

The foregoing resolution was adopted on the 3rd day of May 2016, by the Board of Supervisors of the County of Los Angeles and ex officio the governing body of all other special assessment and taxing districts, agencies, and authorities for which said Board so acts.



LORI GLASGOW
Executive Officer of the
Board of Supervisors of the
County of Los Angeles

By

Deputy

APPROVED AS TO FORM:

MARY C. WICKHAM
County Counsel

By

Carole Suzuki for Tolia Halabi
Deputy

**COUNTY OF LOS ANGELES
BOARD OF SUPERVISORS
RESOLUTION ORDERING ANNEXATION OF TERRITORIES TO
COUNTY LIGHTING MAINTENANCE DISTRICT 1687 AND
COUNTY LIGHTING DISTRICT LANDSCAPING AND LIGHTING ACT-1,
UNINCORPORATED ZONE, AND CONFIRMING A DIAGRAM AND ASSESSMENT,
AND LEVYING OF ASSESSMENTS WITHIN THE ANNEXED TERRITORIES FOR
FISCAL YEAR 2016-17**

WHEREAS, the County of Los Angeles Board of Supervisors (Board of Supervisors) previously approved and filed Petition Nos. 15-412, 41-614, 39-613, and 75-1113 requesting annexation of territories to County Lighting Maintenance District 1687 and County Lighting District Landscaping and Lighting Act-1 (LLA-1), Unincorporated Zone, to provide for the installation, operation, and maintenance of streetlights within the annexed territories and assessments for the costs thereof; and

WHEREAS, the Board of Supervisors on _____, has approved the Engineer's Reports, which identifies the diagrams, improvements, assessments, plans and specifications, and other pertinent data for each petitioned territory; and adopted a Resolution of Intention to Annex Territories to County Lighting Maintenance District 1687 and County Lighting District LLA-1, Unincorporated Zone, and Order the Levying of Assessments within the Annexed Territories for Fiscal Year 2016-17, and fixed a time for hearing Petition Nos. 15-412, 41-614, 39-613, and 75-1113 and the protests of interested persons; and

WHEREAS, the Executive Officer of the Board of Supervisors did cause the notice of public hearing to be mailed to all property owners within the territories subject to the proposed annexation at least 45 days prior to the date set for hearing; and

WHEREAS, the Director of Public Works or her designee has mailed assessment ballots and notices to property owners of identified parcels within the territories proposed for annexation pursuant to California Government Code section 53753 to indicate support or opposition on the matter of the assessment; and

WHEREAS, the Executive Officer of the Board of Supervisors did cause the notice of the public hearing to be posted in three conspicuous places within the territories to be annexed and did give notice of the public hearing by publishing once a week for two successive weeks in a newspaper of general circulation; and

WHEREAS, said Board of Supervisors has heard all testimony and evidence with regard to the annexation, and levy of assessments and has tabulated all returned assessment ballots concerning the proposed assessments and has found that no majority protest exists.

NOW, THEREFORE, BE IT RESOLVED, by the Board of Supervisors of the County of Los Angeles, that:

SECTION 1. Petition Nos. 15-412, 41-614, 39-613, and 75-1113 for annexation of territories hereinafter described to County Lighting Maintenance District 1687 and County Lighting District LLA-1, Unincorporated Zone, were signed by property owners representing 60 percent or more of the areas proposed to be annexed.

SECTION 2. The Board of Supervisors hereby finds that the public interest and convenience require the installation, operation, and maintenance of the street lighting improvements within the territories proposed for annexation and hereby grants the petitions.

SECTION 3. The Board of Supervisors hereby orders the annexation of territories listed in Attachment A to County Lighting Maintenance District 1687 and County Lighting District LLA-1, Unincorporated Zone, with the exception where a majority protest exists.

SECTION 4. The Board of Supervisors hereby determines that the territories identified will benefit by the annexation to County Lighting Maintenance District 1687 and County Lighting District LLA-1, Unincorporated Zone, and hereby orders the boundary of said district be altered to include said benefited territories.

SECTION 5. The Diagrams and Assessments, as set forth in the Engineer's Reports or as modified, are hereby approved, confirmed, and adopted by this Board.

SECTION 6. The Director of Public Works or her designee shall authorize the installation, operation, and maintenance of the street lighting improvements indicated in the Engineer's Reports.

SECTION 7. The adoption of this resolution constitutes the levying of assessments on benefited parcels identified in the Engineer's Reports and located within Petition Nos. 15-412, 41-614, 39-613, and 75-1113 for the fiscal year commencing July 1, 2016, and ending June 30, 2017, for the operation and maintenance of streetlights located therein.

SECTION 8. The amounts to be assessed for the expense of the installation, operation, and maintenance of the improvements, as described in said Engineer's Reports and resolution of intention, shall be levied and collected in the same manner and by the same officers as taxes for County purposes are levied and collected and shall be disbursed and expended for installation, operation, and maintenance of said improvements, all as described in the Engineer's Reports and in the Resolution of Intention.

SECTION 9. The Executive Officer of the Board is hereby ordered and directed to file a certified copy of the Engineer's Reports, which include the lighting district diagrams and assessments together with a certified copy of this resolution upon its adoption, with the County Assessor, Ownership Services Section (Attention Sonia Carter Baltazar), and with the Auditor-Controller, Tax Division (Attention Grace Kinoshita).

PROPOSED ANNEXATION OF
APPROVED PETITION TERRITORY
COUNTY OF LOS ANGELES
DEPARTMENT OF PUBLIC WORKS

Petition No.	LLA-1 Zone	CLMD	Sup Dist	Location	Majority Protest (yes or no)
15-412	Unincorporated Area	1687	1	Third Avenue from Workman Mill Road to Proctor Avenue	
41-614	Unincorporated Area	1687	4	Los Molinos Street from south of Rio Claro Drive	
39-613	Unincorporated Area	1687	5	La Crescenta Avenue from Los Olivos Lane to south of Fairmont Avenue	
75-1113	Unincorporated Area	1687	5	Graydon Avenue from Altern Street to Camino Real	

The foregoing resolution was adopted on the _____ day of _____ 2016,
by the Board of Supervisors of the County of Los Angeles and ex officio the governing
body of all other special assessment and taxing districts, agencies, and authorities for
which said Board so acts.

LORI GLASGOW
Executive Officer of the
Board of Supervisors of the
County of Los Angeles

By _____
Deputy

APPROVED AS TO FORM:

MARY C. WICKHAM
County Counsel

By Carole Suzuki for Talin
Deputy Holabi

**JOINT RESOLUTION OF
THE BOARD OF SUPERVISORS OF THE COUNTY OF LOS ANGELES,
THE BOARD OF TRUSTEES OF THE GREATER LOS ANGELES COUNTY
VECTOR CONTROL DISTRICT, THE BOARD OF DIRECTORS OF THE COUNTY
SANITATION DISTRICT NO. 15 OF LOS ANGELES COUNTY,
AND THE BOARD OF DIRECTORS OF THE UPPER SAN GABRIEL VALLEY
MUNICIPAL WATER DISTRICT APPROVING AND ACCEPTING THE NEGOTIATED
EXCHANGE OF PROPERTY TAX REVENUES RESULTING FROM
ANNEXATION OF PETITION NO. 15-412 TO
COUNTY LIGHTING MAINTENANCE DISTRICT 1687**

WHEREAS, pursuant to Section 99.01 of the California Revenue and Taxation Code, prior to the effective date of any jurisdictional change that will result in a special district providing one or more services to an area where those services have not previously been provided by any local agency, the special district and each local agency that receives an apportionment of property tax revenue from the area must negotiate an exchange of property tax increment generated in the area subject to the jurisdictional change and attributable to those local agencies; and

WHEREAS, the Board of Supervisors of the County of Los Angeles, acting on behalf of the County Lighting Maintenance District 1687, the County General Fund, the County of Los Angeles Public Library, the County of Los Angeles Road District No. 1, the Consolidated Fire Protection District of Los Angeles County, the County of Los Angeles Flood Control Drainage Improvement Maintenance District, and the Los Angeles County Flood Control District; the Board of Trustees of the Greater Los Angeles County Vector Control District; the Board of Directors of the County Sanitation District No. 15 of Los Angeles County; and the Board of Directors of the Upper San Gabriel Valley Municipal Water District have determined that the amount of property tax revenue to be exchanged between their respective agencies as a result of the annexation proposal identified as Petition No. 15-412 to County Lighting Maintenance District 1687 is as shown on the attached Property Tax Transfer Resolution Worksheet.

NOW, THEREFORE, BE IT RESOLVED AS FOLLOWS:

1. The negotiated exchange of property tax revenues between the County Lighting Maintenance District 1687, the County General Fund, the County of Los Angeles Public Library, the County of Los Angeles Road District No. 1, the Consolidated Fire Protection District of Los Angeles County, the County of Los Angeles Flood Control Drainage Improvement Maintenance District, the Los Angeles County Flood Control District, the Greater Los Angeles County Vector Control District, the County Sanitation District No. 15 of Los Angeles County, and the Upper San Gabriel Valley Municipal Water District resulting from the annexation of Petition No. 15-412 to County Lighting Maintenance District 1687 is approved and accepted.

2. For fiscal years commencing on or after July 1, 2016, or the July 1 after the effective date of this jurisdictional change, whichever is later, the property tax revenue increment generated from the area within Petition No. 15-412, Tax Rate Area 02228, shall be allocated to the affected agencies as indicated on the attached Property Tax Transfer Resolution Worksheet.

3. No transfer of property tax revenues other than those specified in paragraph 2, shall be made as a result of the annexation of Petition No. 15-412.

4. If at any time after the effective date of this resolution, the calculations used herein to determine initial property tax transfers or the data used to perform those calculations are found to be incorrect, thus producing an improper or inaccurate property tax transfer, the property tax transfer shall be recalculated and the corrected transfer shall be implemented for the next fiscal year, and any amounts of property tax received in excess of that which is proper shall be refunded to the appropriate agency.

PASSED, APPROVED, AND ADOPTED this 10th day of September 2015, by the following vote:

AYES:
NOES:
ABSENT:
ABSTAIN:

GREATER LOS ANGELES COUNTY
VECTOR CONTROL DISTRICT

[Signature]
President, Board of Trustees

ATTEST:

[Signature]
Secretary

9/10/15
Date

NOW, THEREFORE, BE IT RESOLVED AS FOLLOWS:

1. The negotiated exchange of property tax revenues between the County Lighting Maintenance District 1687, the County General Fund, the County of Los Angeles Public Library, the County of Los Angeles Road District No. 1, the Consolidated Fire Protection District of Los Angeles County, the County of Los Angeles Flood Control Drainage Improvement Maintenance District, the Los Angeles County Flood Control District, the Greater Los Angeles County Vector Control District, the County Sanitation District No. 15 of Los Angeles County, and the Upper San Gabriel Valley Municipal Water District resulting from the annexation of Petition No. 15-412 to County Lighting Maintenance District 1687 is approved and accepted.

2. For fiscal years commencing on or after July 1, 2016, or the July 1 after the effective date of this jurisdictional change, whichever is later, the property tax revenue increment generated from the area within Petition No. 15-412, Tax Rate Area 02228, shall be allocated to the affected agencies as indicated on the attached Property Tax Transfer Resolution Worksheet.

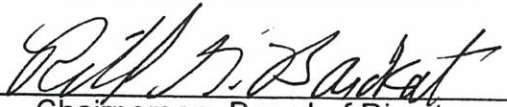
3. No transfer of property tax revenues other than those specified in paragraph 2, shall be made as a result of the annexation of Petition No. 15-412.

4. If at any time after the effective date of this resolution, the calculations used herein to determine initial property tax transfers or the data used to perform those calculations are found to be incorrect, thus producing an improper or inaccurate property tax transfer, the property tax transfer shall be recalculated and the corrected transfer shall be implemented for the next fiscal year, and any amounts of property tax received in excess of that which is proper shall be refunded to the appropriate agency.

PASSED, APPROVED, AND ADOPTED this 23rd day of September 2015, by the following vote:

AYES: Nineteen (19)
NOES: None
ABSENT: Two (2)
ABSTAIN: None

COUNTY SANITATION DISTRICT NO. 15
OF LOS ANGELES COUNTY


Chairperson, Board of Directors

ATTEST:


Secretary

SEP 23 2015

Date

NOW, THEREFORE, BE IT RESOLVED AS FOLLOWS:

1. The negotiated exchange of property tax revenues between the County Lighting Maintenance District 1687, the County General Fund, the County of Los Angeles Public Library, the County of Los Angeles Road District No. 1, the Consolidated Fire Protection District of Los Angeles County, the County of Los Angeles Flood Control Drainage Improvement Maintenance District, the Los Angeles County Flood Control District, the Greater Los Angeles County Vector Control District, the County Sanitation District No. 15 of Los Angeles County, and the Upper San Gabriel Valley Municipal Water District resulting from the annexation of Petition No. 15-412 to County Lighting Maintenance District 1687 is approved and accepted.

2. For fiscal years commencing on or after July 1, 2016, or the July 1 after the effective date of this jurisdictional change, whichever is later, the property tax revenue increment generated from the area within Petition No. 15-412, Tax Rate Area 02228, shall be allocated to the affected agencies as indicated on the attached Property Tax Transfer Resolution Worksheet.

3. No transfer of property tax revenues other than those specified in paragraph 2, shall be made as a result of the annexation of Petition No. 15-412.

4. If at any time after the effective date of this resolution, the calculations used herein to determine initial property tax transfers or the data used to perform those calculations are found to be incorrect, thus, producing an improper or inaccurate property tax transfer, the property tax transfer shall be recalculated and the corrected transfer shall be implemented for the next fiscal year, and any amounts of property tax received in excess of that which is proper shall be refunded to the appropriate agency.

PASSED, APPROVED, AND ADOPTED this 1st day of September 2015, by the following vote:

AYES: 4
NOES: 0
ABSENT: 1
ABSTAIN: 0

UPPER SAN GABRIEL VALLEY
MUNICIPAL WATER DISTRICT

Michael Touhey
President, Board of Directors

ATTEST:

[Signature]
Secretary

9/1/15
Date

PROPERTY TAX TRANSFER RESOLUTION WORKSHEET
FISCAL YEAR 2014-2015

PREPARED 06/01/2015 PAGE 1

ANNEXATION TO:
ACCOUNT NUMBER: CO LIGHTING MAINT DIST NO 1687
TRA: 019.40
EFFECTIVE DATE: 02228
07/01/2015
ANNEXATION NUMBER: PE 15-412
PROJECT NAME: PETITION NO. 15-412
DISTRICT SHARE: 0.020101953

ACCOUNT #	TAXING AGENCY	CURRENT TAX SHARE	PERCENT	PROPOSED DIST SHARE	ALLOCATED SHARE	ADJUSTMENTS	NET SHARE
-----	-----	-----	-----	-----	-----	-----	-----
001.05	LOS ANGELES COUNTY GENERAL	0.303510274	30.3521 %	0.020101953	0.006101158	-0.006243508	0.297266766
001.20	L.A. COUNTY ACCUM CAP OUTLAY	0.000110947	0.0110 %	0.020101953	0.000002230	0.000000000	0.000110947
003.01	L A COUNTY LIBRARY	0.022571853	2.2571 %	0.020101953	0.000453738	-0.000453738	0.022118115
005.05	ROAD DIST # 1	0.005679020	0.5679 %	0.020101953	0.000114159	-0.000114159	0.005564861
007.30	CONSOL. FIRE PRO.DIST.OF L.A.CO.	0.170588942	17.0588 %	0.020101953	0.003429170	-0.003429170	0.167159772
007.31	L A C FIRE-FFW	0.006970473	0.6970 %	0.020101953	0.000140120	0.000000000	0.006970473
030.10	L.A.CO.FL.CON.DR.IMP.DIST.MAINT.	0.001662250	0.1662 %	0.020101953	0.000033414	-0.000033414	0.001628836
030.70	LA CO FLOOD CONTROL MAINT	0.009407094	0.9407 %	0.020101953	0.000189100	-0.000189100	0.009217994
061.80	GREATER L A CO VECTOR CONTROL	0.000358591	0.0358 %	0.020101953	0.000007208	-0.000007208	0.000351383
066.50	CO SANIT DIST NO 15 OPERATING	0.012730121	1.2730 %	0.020101953	0.000255900	-0.000255900	0.012474221
368.05	UPPER SAN GAB. VY. MUN. WATER	0.000547699	0.0547 %	0.020101953	0.000011009	-0.000011009	0.000536690
400.00	EDUCATIONAL REV AUGMENTATION FD	0.069138904	6.9138 %	0.020101953	0.001389826	EXEMPT	0.069138904
400.01	EDUCATIONAL AUG FD IMPOUND	0.131877650	13.1877 %	0.020101953	0.002650998	EXEMPT	0.131877650
400.15	COUNTY SCHOOL SERVICES	0.001375922	0.1375 %	0.020101953	0.000027658	EXEMPT	0.001375922
400.21	CHILDREN'S INSTIL TUITION FUND	0.002730791	0.2730 %	0.020101953	0.000054894	EXEMPT	0.002730791
809.04	MT.SAN ANTONIO COMMUNITY COLLEGE	0.029472021	2.9472 %	0.020101953	0.000592445	EXEMPT	0.029472021
809.20	MT SAN ANTONIO CHILDRENS CTR FD	0.000284471	0.0284 %	0.020101953	0.000005718	EXEMPT	0.000284471
821.03	BASSETT UNIFIED SCHOOL DISTRICT	0.219931624	21.9931 %	0.020101953	0.004421055	EXEMPT	0.219931624
821.06	CO.SCH.SERV.FD.- BASSETT	0.009816925	0.9816 %	0.020101953	0.000197339	EXEMPT	0.009816925

PROPERTY TAX TRANSFER RESOLUTION WORKSHEET
FISCAL YEAR 2014-2015

ANNEXATION NUMBER: PE 15-412 PROJECT NAME: PETITION NO. 15-412

TRA: 02228

ACCOUNT #	TAXING AGENCY	CURRENT TAX SHARE	PERCENT	PROPOSED DIST SHARE	ALLOCATED SHARE	ADJUSTMENTS	NET SHARE
821.07	DEV.CTR.HDCPD.MINOR-BASSETT	0.001234428	0.1234 %	0.020101953	0.000024814	EXEMPT	0.001234428
***019.40	CO LIGHTING MAINT DIST NO 1687	0.000000000	0.0000 %	0.020101953	0.000000000	0.000000000	0.010737206
TOTAL:				100.0000 %	0.020101953	-0.010737206	1.000000000

The foregoing resolution was adopted on the _____ day of _____ 2016,
by the Board of Supervisors of the County of Los Angeles and ex officio the governing
body of all other special assessment and taxing districts, agencies, and authorities for
which said Board so acts.

LORI GLASGOW
Executive Officer of the
Board of Supervisors of the
County of Los Angeles

By _____
Deputy

APPROVED AS TO FORM:

MARY C. WICKHAM
County Counsel

By Carol Suzuki for Talin Halabi
Deputy

**JOINT RESOLUTION OF
THE BOARD OF SUPERVISORS OF THE COUNTY OF LOS ANGELES, THE
BOARD OF TRUSTEES OF THE GREATER LOS ANGELES COUNTY VECTOR
CONTROL DISTRICT, THE BOARD OF DIRECTORS OF THE SANITATION
DISTRICT NO. 21 OF LOS ANGELES COUNTY, AND THE BOARD OF DIRECTORS
OF THE UPPER SAN GABRIEL VALLEY MUNICIPAL WATER DISTRICT
APPROVING AND ACCEPTING THE NEGOTIATED EXCHANGE OF PROPERTY
TAX REVENUES RESULTING FROM ANNEXATION OF PETITION NO. 41-614
TO COUNTY LIGHTING MAINTENANCE DISTRICT 1687**

WHEREAS, pursuant to Section 99.01 of the California Revenue and Taxation Code, prior to the effective date of any jurisdictional change that will result in a special district providing one or more services to an area where those services have not previously been provided by any local agency, the special district and each local agency that receives an apportionment of property tax revenue from the area must negotiate an exchange of property tax increment generated in the area subject to the jurisdictional change and attributable to those local agencies; and

WHEREAS, the Board of Supervisors of the County of Los Angeles, acting on behalf of the County Lighting Maintenance District 1687, the County General Fund, the County of Los Angeles Public Library, the County of Los Angeles Road District No. 4, the Consolidated Fire Protection District of Los Angeles County, the County of Los Angeles Flood Control Drainage Improvement Maintenance District, and the Los Angeles County Flood Control District; the Board of Trustees of the Greater Los Angeles County Vector Control District; the Board of Directors of the County Sanitation District No. 21 of Los Angeles County; and the Board of Directors of the Upper San Gabriel Valley Municipal Water District have determined that the amount of property tax revenue to be exchanged between their respective agencies as a result of the annexation proposal identified as Petition No. 41-614 to County Lighting Maintenance District 1687 is as shown on the attached Property Tax Transfer Resolution Worksheet.

NOW, THEREFORE, BE IT RESOLVED AS FOLLOWS:

1. The negotiated exchange of property tax revenues between of the County Lighting Maintenance District 1687, the County General Fund, the County of Los Angeles Public Library, the County of Los Angeles Road District No. 4, the Consolidated Fire Protection District of Los Angeles County, the County of Los Angeles Flood Control Drainage Improvement Maintenance District, and the Los Angeles County Flood Control District, the Greater Los Angeles County Vector Control District, the County Sanitation District No. 21 of Los Angeles County, and the Upper San Gabriel Valley Municipal Water District resulting from the annexation of Petition No. 41-614 to County Lighting Maintenance District 1687 is approved and accepted.

2. For fiscal years commencing on or after July 1, 2016, or the July 1 after the effective date of this jurisdictional change, whichever is later, the property tax revenue increment generated from the area within Petition No. 41-614, Tax Rate Area 04390, shall be allocated to the affected agencies as indicated on the enclosed Property Tax Transfer Resolution Worksheet.

3. No transfer of property tax revenues other than those specified in paragraph 2 shall be made as a result of annexation of Petition No. 41-614.

4. If at any time after the effective date of this resolution, the calculations used herein to determine initial property tax transfers or the data used to perform those calculations are found to be incorrect, thus, producing an improper or inaccurate property tax transfer, the property tax transfer shall be recalculated and the corrected transfer shall be implemented for the next fiscal year, and any amounts of property tax received in excess of that which is proper shall be refunded to the appropriate agency.

PASSED, APPROVED, AND ADOPTED this 10th day of September 2015, by the following vote:

AYES:
NOES:
ABSENT:
ABSTAIN:

GREATER LOS ANGELES COUNTY
VECTOR CONTROL DISTRICT



President, Board of Trustees

ATTEST:



Secretary

9/10/15

Date

NOW, THEREFORE, BE IT RESOLVED AS FOLLOWS:

1. The negotiated exchange of property tax revenues between of the County Lighting Maintenance District 1687, the County General Fund, the County of Los Angeles Public Library, the County of Los Angeles Road District No. 4, the Consolidated Fire Protection District of Los Angeles County, the County of Los Angeles Flood Control Drainage Improvement Maintenance District, the Los Angeles County Flood Control District, the Greater Los Angeles County Vector Control District, the County Sanitation District No. 21 of Los Angeles County, and the Upper San Gabriel Valley Municipal Water District resulting from the annexation of Petition No. 41-614 to County Lighting Maintenance District 1687 is approved and accepted.

2. For fiscal years commencing on or after July 1, 2016, or the July 1 after the effective date of this jurisdictional change, whichever is later, the property tax revenue increment generated from the area within Petition No. 41-614, Tax Rate Area 04390, shall be allocated to the affected agencies as indicated on the attached Property Tax Transfer Resolution Worksheet.


3. No transfer of property tax revenues other than those specified in paragraph 2 shall be made as a result of annexation of Petition No. 41-614.

4. If at any time after the effective date of this resolution, the calculations used herein to determine initial property tax transfers or the data used to perform those calculations are found to be incorrect, thus, producing an improper or inaccurate property tax transfer, the property tax transfer shall be recalculated and the corrected transfer shall be implemented for the next fiscal year, and any amounts of property tax received in excess of that which is proper shall be refunded to the appropriate agency.


PASSED, APPROVED, AND ADOPTED this 23rd day of September 2015, by the following vote:

AYES: Ten (10)
NOES: None
ABSENT: None
ABSTAIN: None

COUNTY SANITATION DISTRICT NO. 21
OF LOS ANGELES COUNTY


Pro Tem Chairperson, Board of Directors

ATTEST:


Secretary

September 23, 2015
Date

NOW, THEREFORE, BE IT RESOLVED AS FOLLOWS:

1. The negotiated exchange of property tax revenues between of the County Lighting Maintenance District 1687, the County General Fund, the County of Los Angeles Public Library, the County of Los Angeles Road District No. 4, the Consolidated Fire Protection District of Los Angeles County, the County of Los Angeles Flood Control Drainage Improvement Maintenance District, the Los Angeles County Flood Control District, the Greater Los Angeles County Vector Control District, the County Sanitation District No. 21 of Los Angeles County, and the Upper San Gabriel Valley Municipal Water District resulting from the annexation of Petition No. 41-614 to County Lighting Maintenance District 1687 is approved and accepted.

2. For fiscal years commencing on or after July 1, 2016, or the July 1 after the effective date of this jurisdictional change, whichever is later, the property tax revenue increment generated from the area within Petition No. 41-614, Tax Rate Area 04390, shall be allocated to the affected agencies as indicated on the attached Property Tax Transfer Resolution Worksheet.

3. No transfer of property tax revenues other than those specified in paragraph 2 shall be made as a result of annexation of Petition No. 41-614.

4. If at any time after the effective date of this resolution, the calculations used herein to determine initial property tax transfers or the data used to perform those calculations are found to be incorrect, thus, producing an improper or inaccurate property tax transfer, the property tax transfer shall be recalculated and the corrected transfer shall be implemented for the next fiscal year, and any amounts of property tax received in excess of that which is proper shall be refunded to the appropriate agency.

PASSED, APPROVED, AND ADOPTED this 1st day of September, 2015, by the following vote:

AYES: 4
NOES: 0
ABSENT: 1
ABSTAIN: 0

UPPER SAN GABRIEL VALLEY
MUNICIPAL WATER DISTRICT

Michael Touhey
President, Board of Directors

ATTEST:

Secretary

Date

9/1/15

PROPERTY TAX TRANSFER RESOLUTION WORKSHEET
FISCAL YEAR 2014-2015

PREPARED 06/01/2015 PAGE 1

ANNEXATION TO:
ACCOUNT NUMBER: 019.40
TRA: 04390
EFFECTIVE DATE: 07/01/2015
ANNEXATION NUMBER: PET 41-614
DISTRICT SHARE: 0.020101953

CO LIGHTING MAINT DIST NO 1687
019.40
04390
07/01/2015
PET 41-614

PROJECT NAME: PETITION NO. 41-614

ACCOUNT #	TAXING AGENCY	CURRENT TAX SHARE	PERCENT	PROPOSED DIST SHARE	ALLOCATED SHARE	ADJUSTMENTS	NET SHARE
001.05	LOS ANGELES COUNTY GENERAL	0.330872496	33.0883 %	0.020101953	0.006651193	-0.006806288	0.324066208
001.20	L.A. COUNTY ACCUM CAP OUTLAY	0.000117223	0.0117 %	0.020101953	0.000002356	0.000000000	0.000117223
003.01	L A COUNTY LIBRARY	0.024179912	2.4179 %	0.020101953	0.000486063	-0.000486063	0.023693849
005.20	ROAD DIST # 4	0.006000979	0.6000 %	0.020101953	0.000120631	-0.000120631	0.005880348
007.30	CONSOL. FIRE PRO.DIST.OF L.A.CO.	0.180259569	18.0259 %	0.020101953	0.003623569	-0.003623569	0.176636000
007.31	L A C FIRE-FFW	0.007598254	0.7598 %	0.020101953	0.000152739	0.000000000	0.007598254
030.10	L.A.CO.FL.CON.DR.IMP.DIST.MAINT.	0.001810246	0.1810 %	0.020101953	0.000036389	-0.000036389	0.001773857
030.70	LA CO FLOOD CONTROL MAINT	0.010244593	1.0244 %	0.020101953	0.000205936	-0.000205936	0.010038657
061.80	GREATER L A CO VECTOR CONTROL	0.000388966	0.0388 %	0.020101953	0.000007818	-0.000007818	0.000381148
066.80	CO SANIT DIST NO 21 OPERATING	0.013158027	1.3158 %	0.020101953	0.000264502	-0.000264502	0.012893525
368.05	UPPER SAN GAB. VY. MUN. WATER	0.000594376	0.0594 %	0.020101953	0.000011948	-0.000011948	0.000582428
400.00	EDUCATIONAL REV AUGMENTATION FD	0.066407845	6.6407 %	0.020101953	0.001334927	EXEMPT	0.066407845
400.01	EDUCATIONAL AUG FD IMPOUND	0.131877650	13.1877 %	0.020101953	0.002650998	EXEMPT	0.131877650
400.15	COUNTY SCHOOL SERVICES	0.001453954	0.1453 %	0.020101953	0.000029227	EXEMPT	0.001453954
400.21	CHILDREN'S INSTIL TUITION FUND	0.002885584	0.2885 %	0.020101953	0.000058005	EXEMPT	0.002885584
809.04	MT.SAN ANTONIO COMMUNITY COLLEGE	0.031142794	3.1142 %	0.020101953	0.000626030	EXEMPT	0.031142794
809.20	MT SAN ANTONIO CHILDRENS CTR FD	0.000300588	0.0300 %	0.020101953	0.000006042	EXEMPT	0.000300588
870.03	HACIENDA-LA PUENTE UNIF. SCH.DIS	0.182122274	18.2122 %	0.020101953	0.003661013	EXEMPT	0.182122274
870.06	CO.SCH.SER.FD.HACIENDA-LA PUENTE	0.007694269	0.7694 %	0.020101953	0.000154669	EXEMPT	0.007694269

PROPERTY TAX TRANSFER RESOLUTION WORKSHEET
FISCAL YEAR 2014-2015

PREPARED 06/01/2015 PAGE

2

ANNEXATION NUMBER: PET 41-614 PROJECT NAME: PETITION NO. 41-614

ACCOUNT #	TAXING AGENCY	CURRENT TAX SHARE	PERCENT	PROPOSED DIST SHARE	TRA: 04390	ALLOCATED SHARE	ADJUSTMENTS	NET SHARE
870.07	DEV.CTR.HDCPD.MINOR-HACI-LA PUTE	0.000890401	0.0890 %	0.020101953		0.000017898	EXEMPT	0.000890401
***019.40	CO LIGHTING MAINT DIST NO 1687	0.000000000	0.0000 %	0.020101953		0.000000000	0.000000000	0.011563144
TOTAL:				100.0000 %		0.020101953	-0.011563144	1.000000000

The foregoing resolution was adopted on the _____ day of _____ 2016, by the Board of Supervisors of the County of Los Angeles and ex officio the governing body of all other special assessment and taxing districts, agencies, and authorities for which said Board so acts.

LORI GLASGOW
Executive Officer of the
Board of Supervisors of the
County of Los Angeles

By _____
Deputy

APPROVED AS TO FORM:

MARY C. WICKHAM
County Counsel

By Carole Suzuki for Talin Halabi
Deputy

**JOINT RESOLUTION OF
THE BOARD OF SUPERVISORS OF THE COUNTY OF LOS ANGELES,
THE BOARD OF DIRECTORS OF THE FOOTHILL MUNICIPAL WATER DISTRICT,
AND THE BOARD OF DIRECTORS OF
THE FOOTHILL MUNICIPAL WATER IMPROVEMENT DISTRICT NO. 1
APPROVING AND ACCEPTING THE NEGOTIATED EXCHANGE OF PROPERTY
TAX REVENUES RESULTING FROM ANNEXATION OF PETITION NO. 39-613
TO COUNTY LIGHTING MAINTENANCE DISTRICT 1687**

WHEREAS, pursuant to Section 99.01 of the California Revenue and Taxation Code, prior to the effective date of any jurisdictional change that will result in a special district providing one or more services to an area where those services have not previously been provided by any local agency, the special district and each local agency that receives an apportionment of property tax revenue from the area must negotiate an exchange of property tax increment generated in the area subject to the jurisdictional change and attributable to those local agencies; and

WHEREAS, the Board of Supervisors of the County of Los Angeles, acting on behalf of the County Lighting Maintenance District 1687, the County General Fund, the County of Los Angeles Public Library, the Los Angeles County Road District No. 5, the Consolidated Fire Protection District of Los Angeles County, the County of Los Angeles Flood Control Drainage Improvement Maintenance District, and the Los Angeles County Flood Control District; the Board of Directors of the Foothill Municipal Water District; and the Board of Directors of the Foothill Municipal Water Improvement District No. 1 have determined that the amount of property tax revenue to be exchanged between their respective agencies as a result of the annexation proposal identified as Petition No. 39-613 to County Lighting Maintenance District 1687 is as shown on the attached Property Tax Transfer Resolution Worksheet.

NOW, THEREFORE, BE IT RESOLVED AS FOLLOWS:

1. The negotiated exchange of property tax revenues between the County Lighting Maintenance District 1687, the Los Angeles County General Fund, the Los Angeles County Library, the Los Angeles County Road District No. 5, the Consolidated Fire Protection District of Los Angeles County, the County of Los Angeles County Flood Control Drainage Improvement Maintenance District, the Los Angeles County Flood Control District, the Foothill Municipal Water District, and the Foothill Municipal Water Improvement District No. 1 resulting from the annexation of Petition No. 39-613 to County Lighting Maintenance District 1687 is approved and accepted.
2. For fiscal years commencing on or after July 1, 2016, or the July 1 after the effective date of this jurisdictional change, whichever is later, the property tax revenue increment generated from the area within Petition No. 39-613, Tax Rate Area 04103 shall be allocated to the affected agencies as indicated on the attached Property Tax Transfer Resolution Worksheet.
3. No transfer of property tax revenues other than those specified in paragraph 2 shall be made as a result of annexation of Petition No. 39-613.
4. If at any time after the effective date of this resolution, the calculations used herein to determine initial property tax transfers or the data used to perform those calculations are found to be incorrect, thus producing an improper or inaccurate property tax transfer, the property tax transfer shall be recalculated and the corrected transfer shall be implemented for the next fiscal year, and any amounts of property tax received in excess of that which is proper shall be refunded to the appropriate agency.

PASSED, APPROVED, AND ADOPTED this 17th day of AUGUST 2015, by the following vote:

AYES: ATWATER, BRYANT, DANABY, MATTHEWS, ROSS
NOES: 0
ABSENT: 0
ABSTAIN: 0

FOOTHILL MUNICIPAL WATER DISTRICT

Richard Atwater
President, Board of Directors

ATTEST:

Maria Joy Z
Secretary

AUGUST 18, 2015
Date

**JOINT RESOLUTION OF
THE BOARD OF SUPERVISORS OF THE COUNTY OF LOS ANGELES,
THE BOARD OF DIRECTORS OF THE FOOTHILL MUNICIPAL WATER DISTRICT,
AND THE BOARD OF DIRECTORS OF
THE FOOTHILL MUNICIPAL WATER IMPROVEMENT DISTRICT NO. 1
APPROVING AND ACCEPTING THE NEGOTIATED EXCHANGE OF PROPERTY
TAX REVENUES RESULTING FROM ANNEXATION OF PETITION NO. 39-613
TO COUNTY LIGHTING MAINTENANCE DISTRICT 1687**

WHEREAS, pursuant to Section 99.01 of the California Revenue and Taxation Code, prior to the effective date of any jurisdictional change that will result in a special district providing one or more services to an area where those services have not previously been provided by any local agency, the special district and each local agency that receives an apportionment of property tax revenue from the area must negotiate an exchange of property tax increment generated in the area subject to the jurisdictional change and attributable to those local agencies; and

WHEREAS, the Board of Supervisors of the County of Los Angeles, acting on behalf of the County Lighting Maintenance District 1687, the County General Fund, the County of Los Angeles Public Library, the Los Angeles County Road District No. 5, the Consolidated Fire Protection District of Los Angeles County, the County of Los Angeles Flood Control Drainage Improvement Maintenance District, and the Los Angeles County Flood Control District; the Board of Directors of the Foothill Municipal Water District; and the Board of Directors of the Foothill Municipal Water Improvement District No. 1 have determined that the amount of property tax revenue to be exchanged between their respective agencies as a result of the annexation proposal identified as Petition No. 39-613 to County Lighting Maintenance District 1687 is as shown on the attached Property Tax Transfer Resolution Worksheet.

NOW, THEREFORE, BE IT RESOLVED AS FOLLOWS:

1. The negotiated exchange of property tax revenues between the County Lighting Maintenance District 1687, the Los Angeles County General Fund, the Los Angeles County Library, the Los Angeles County Road District No. 5, the Consolidated Fire Protection District of Los Angeles County, the County of Los Angeles County Flood Control Drainage Improvement Maintenance District, the Los Angeles County Flood Control District, the Foothill Municipal Water District, and the Foothill Municipal Water Improvement District No. 1 resulting from the annexation of Petition No. 39-613 to County Lighting Maintenance District 1687 is approved and accepted.
2. For fiscal years commencing on or after July 1, 2016, or the July 1 after the effective date of this jurisdictional change, whichever is later, the property tax revenue increment generated from the area within Petition No. 39-613, Tax Rate Area 04103 shall be allocated to the affected agencies as indicated in the attached Property Tax Transfer Resolution Worksheet.
3. No transfer of property tax revenues other than those specified in paragraph 2 shall be made as a result of annexation of Petition No. 39-613.
4. If at any time after the effective date of this resolution, the calculations used herein to determine initial property tax transfers or the data used to perform those calculations are found to be incorrect, thus producing an improper or inaccurate property tax transfer, the property tax transfer shall be recalculated and the corrected transfer shall be implemented for the next fiscal year, and any amounts of property tax received in excess of that which is proper shall be refunded to the appropriate agency.

PASSED, APPROVED, AND ADOPTED this 17th day of AUGUST 2015, by the following vote:

AYES: ATWATER, BRYANT, DANABY, MATTHEWS, ROSS
NOES: 0
ABSENT: 0
ABSTAIN: 0

FOOTHILL MUNICIPAL WATER
IMPROVEMENT DISTRICT NO. 1

Richard A. Shaw
Chairperson, Board of Directors

ATTEST:

Spencer
Secretary

AUGUST 18, 2015
Date

PROPERTY TAX TRANSFER RESOLUTION WORKSHEET
FISCAL YEAR 2014-2015

PREPARED 06/01/2015 PAGE 1

ANNEXATION TO:
ACCOUNT NUMBER: CO LIGHTING MAINT DIST NO 1687
TRA: 019.40
EFFECTIVE DATE: 04103
ANNEXATION NUMBER: 07/01/2015
DISTRICT SHARE: PE 39-613
PROJECT NAME: PETITION NO. 39-613
DISTRICT SHARE: 0.020101953

ACCOUNT #	TAXING AGENCY	CURRENT TAX SHARE	PERCENT	PROPOSED DIST SHARE	ALLOCATED SHARE	ADJUSTMENTS	NET SHARE
-----	-----	-----	-----	-----	-----	-----	-----
001.05	LOS ANGELES COUNTY GENERAL	0.333955506	33.3966 %	0.020101953	0.006713167	-0.006869698	0.327085808
001.20	L.A. COUNTY ACCUM CAP OUTLAY	0.000117937	0.0117 %	0.020101953	0.000002370	0.000000000	0.000117937
003.01	L A COUNTY LIBRARY	0.024361067	2.4361 %	0.020101953	0.000489705	-0.000489705	0.023871362
005.25	ROAD DIST # 5	0.006503872	0.6503 %	0.020101953	0.000130740	-0.000130740	0.006373132
007.30	CONSOL. FIRE PRO.DIST.OF L.A.CO.	0.181349141	18.1349 %	0.020101953	0.003645471	-0.003645471	0.177703670
007.31	L A C FIRE-FFW	0.007668988	0.7668 %	0.020101953	0.000154161	0.000000000	0.007668988
030.10	L.A.CO.FL.CON.DR.IMP.DIST.MAINT.	0.001826912	0.1826 %	0.020101953	0.000036724	-0.000036724	0.001790188
030.70	LA CO FLOOD CONTROL MAINT	0.010338956	1.0338 %	0.020101953	0.000207833	-0.000207833	0.010131123
355.05	FOOTHILL MUNICIPAL WATER DIST	0.000277429	0.0277 %	0.020101953	0.000005576	-0.000005576	0.000271853
360.05	FOOTHILL MUN W DIST IMP DIST # 1	0.000746205	0.0746 %	0.020101953	0.000015000	-0.000015000	0.000731205
400.00	EDUCATIONAL REV AUGMENTATION FD	0.064056359	6.4056 %	0.020101953	0.001287657	EXEMPT	0.064056359
400.01	EDUCATIONAL AUG FD IMPOUND	0.131877650	13.1877 %	0.020101953	0.002650998	EXEMPT	0.131877650
400.15	COUNTY SCHOOL SERVICES	0.001462738	0.1462 %	0.020101953	0.000029403	EXEMPT	0.001462738
400.21	CHILDREN'S INSTIL TUITION FUND	0.002903027	0.2903 %	0.020101953	0.000058356	EXEMPT	0.002903027
800.04	GLENDALE COMMUNITY COLLEGE DIST	0.036668158	3.6668 %	0.020101953	0.000737101	EXEMPT	0.036668158
867.03	GLENDALE UNIFIED SCHOOL DISTRICT	0.191331791	19.1331 %	0.020101953	0.003846142	EXEMPT	0.191331791
867.06	CO.SCH.SERV.FD.- GLENDALE	0.002259833	0.2259 %	0.020101953	0.000045427	EXEMPT	0.002259833
867.07	DEV.CTR.HDCPD.MINOR-GLENDALE	0.001425784	0.1425 %	0.020101953	0.000028661	EXEMPT	0.001425784
867.20	GLENDALE UNIF CHILDRENS CTR FD	0.000868647	0.0868 %	0.020101953	0.000017461	EXEMPT	0.000868647

PROPERTY TAX TRANSFER RESOLUTION WORKSHEET
FISCAL YEAR 2014-2015

PREPARED 06/01/2015 PAGE 2

ANNEXATION NUMBER: PE 39-613 PROJECT NAME: PETITION NO. 39-613 TRA: 04103

ACCOUNT #	TAXING AGENCY	CURRENT TAX SHARE	PERCENT	PROPOSED DIST SHARE	ALLOCATED SHARE	ADJUSTMENTS	NET SHARE
***019.40	CO LIGHTING MAINT DIST NO 1687	0.0000000000	0.0000 %	0.020101953	0.0000000000	0.0000000000	0.011400747
	TOTAL:	1.0000000000	100.0000 %		0.020101953	-0.011400747	1.0000000000

The foregoing resolution was adopted on the _____ day of _____ 2016, by the Board of Supervisors of the County of Los Angeles and ex officio the governing body of all other special assessment and taxing districts, agencies, and authorities for which said Board so acts.

LORI GLASGOW
Executive Officer of the
Board of Supervisors of the
County of Los Angeles

By _____
Deputy

APPROVED AS TO FORM:

MARY C. WICKHAM
County Counsel

By Carole Suzuki for Talin Halabi
Deputy

**JOINT RESOLUTION OF
THE BOARD OF SUPERVISORS OF THE COUNTY OF LOS ANGELES,
THE BOARD OF DIRECTORS OF THE SANITATION DISTRICT NO. 15
OF LOS ANGELES COUNTY, AND THE BOARD OF DIRECTORS OF
THE UPPER SAN GABRIEL VALLEY MUNICIPAL WATER DISTRICT
APPROVING AND ACCEPTING THE NEGOTIATED EXCHANGE OF
PROPERTY TAX REVENUES RESULTING FROM
ANNEXATION OF PETITION NO. 75-1113
TO COUNTY LIGHTING MAINTENANCE DISTRICT 1687**

WHEREAS, pursuant to Section 99.01 of the California Revenue and Taxation Code, prior to the effective date of any jurisdictional change that will result in a special district providing one or more services to an area where those services have not previously been provided by any local agency, the special district and each local agency that receives an apportionment of property tax revenue from the area must negotiate an exchange of property tax increment generated in the area subject to the jurisdictional change and attributable to those local agencies; and

WHEREAS, the Board of Supervisors of the County of Los Angeles, acting on behalf of the County Lighting Maintenance District 1687, the County General Fund, the County of Los Angeles Public Library, the County of Los Angeles Road District No. 5, the Consolidated Fire Protection District of Los Angeles County, the County of Los Angeles Flood Control Drainage Improvement Maintenance District, and the Los Angeles County Flood Control District; the Board of Directors of the County Sanitation District No. 15 of Los Angeles County; and the Board of Directors of the Upper San Gabriel Valley Municipal Water District have determined that the amount of property tax revenue to be exchanged between their respective agencies as a result of the annexation proposal identified as Petition No. 75-1113 to County Lighting Maintenance District 1687 is as shown on the attached Property Tax Transfer Resolution Worksheet.

NOW, THEREFORE, BE IT RESOLVED AS FOLLOWS:

1. The negotiated exchange of property tax revenues between the County Lighting Maintenance District 1687, the County General Fund, the County of Los Angeles Public Library, the County of Los Angeles Road District No. 5, the Consolidated Fire Protection District of Los Angeles County, the County of Los Angeles Flood Control Drainage Improvement Maintenance District, the Los Angeles County Flood Control District, the County Sanitation District No. 15 of Los Angeles County, and the Upper San Gabriel Valley Municipal Water District resulting from the annexation of Petition No. 75-1113 to County Lighting Maintenance District 1687 is approved and accepted.
2. For fiscal years commencing on or after July 1, 2016, or the July 1 after the effective date of this jurisdictional change, whichever is later, the property tax revenue increment generated from the area within Petition No. 75-1113, Tax Rate Area 06264, shall be allocated to the affected agencies as indicated on the enclosed Property Tax Transfer Resolution Worksheet.
3. No transfer of property tax revenues other than those specified in paragraph 2, shall be made as a result of the annexation of Petition No. 75-1113.
4. If at any time after the effective date of this resolution, the calculations used herein to determine initial property tax transfers or the data used to perform those calculations are found to be incorrect, thus, producing an improper or inaccurate property tax transfer, the property tax transfer shall be recalculated and the corrected transfer shall be implemented for the next fiscal year, and any amounts of property tax received in excess of that which is proper shall be refunded to the appropriate agency.

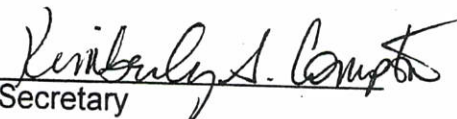
PASSED, APPROVED, AND ADOPTED this 23rd day of September 2015, by the following vote:

AYES: Nineteen (19)
NOES: None
ABSENT: Two (2)
ABSTAIN: None

COUNTY SANITATION DISTRICT NO. 15
OF LOS ANGELES COUNTY


Chairperson, Board of Directors

ATTEST:


Secretary

SEP 23 2015

Date

NOW, THEREFORE, BE IT RESOLVED AS FOLLOWS:

1. The negotiated exchange of property tax revenues between the County Lighting Maintenance District 1687, the County General Fund, the County of Los Angeles Public Library, the County of Los Angeles Road District No. 5, the Consolidated Fire Protection District of Los Angeles County, the County of Los Angeles Flood Control Drainage Improvement Maintenance District, and the Los Angeles County Flood Control District, the County Sanitation District No. 15 of Los Angeles County, and the Upper San Gabriel Valley Municipal Water District resulting from the annexation of Petition No. 75-1113 to County Lighting Maintenance District 1687 is approved and accepted.

2. For fiscal years commencing on or after July 1, 2015, or the July 1 after the effective date of this jurisdictional change, whichever is later, the property tax revenue increment generated from the area within Petition No. 75-1113, Tax Rate Area 06264, shall be allocated to the affected agencies as indicated on the attached Property Tax Transfer Resolution Worksheet.

3. No transfer of property tax revenues other than those specified in paragraph 2, shall be made as a result of the annexation of Petition No. 75-1113.

4. If at any time after the effective date of this resolution, the calculations used herein to determine initial property tax transfers or the data used to perform those calculations are found to be incorrect, thus producing an improper or inaccurate property tax transfer, the property tax transfer shall be recalculated and the corrected transfer shall be implemented for the next fiscal year, and any amounts of property tax received in excess of that which is proper shall be refunded to the appropriate agency.

PASSED, APPROVED, AND ADOPTED this 1st day of September, 2015, by the following vote:

AYES: 4
NOES: 0
ABSENT: 1
ABSTAIN: 0

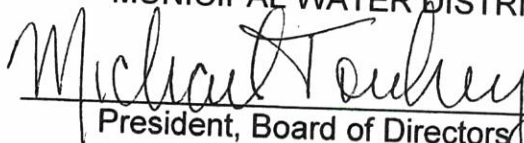
ATTEST:


Secretary

Date

9/1/15

UPPER SAN GABRIEL VALLEY
MUNICIPAL WATER DISTRICT


President, Board of Directors

PROPERTY TAX TRANSFER RESOLUTION WORKSHEET
FISCAL YEAR 2014-2015

PREPARED 06/02/2015 PAGE 1

ANNEXATION TO:
ACCOUNT NUMBER:
TRA:
EFFECTIVE DATE:
ANNEXATION NUMBER:
DISTRICT SHARE:

CO LIGHTING MAINT DIST NO 1687
019.40
06264
07/01/2015
PE 75-1113
PROJECT NAME: PETITION NO. 75-1113
0.020101953

ACCOUNT #	TAXING AGENCY	CURRENT TAX SHARE	PERCENT	PROPOSED DIST SHARE	ALLOCATED SHARE	ADJUSTMENTS	NET SHARE
001.05	LOS ANGELES COUNTY GENERAL	0.312252216	31.2263 %	0.020101953	0.006276887	-0.006423308	0.305828908
001.20	L.A. COUNTY ACCUM CAP OUTLAY	0.0000112939	0.0112 %	0.020101953	0.0000002270	0.0000000000	0.000112939
003.01	L A COUNTY LIBRARY	0.023085582	2.3085 %	0.020101953	0.000464065	-0.000464065	0.022621517
005.25	ROAD DIST # 5	0.005781884	0.5781 %	0.020101953	0.000116227	-0.000116227	0.005665657
007.30	CONSOL. FIRE PRO.DIST.OF L.A.CO.	0.173678387	17.3678 %	0.020101953	0.003491274	-0.003491274	0.170187113
007.31	L A C FIRE-FFW	0.007171042	0.7171 %	0.020101953	0.000144151	0.0000000000	0.007171042
030.10	L.A.CO.FL.CON.DR.IMP.DIST.MAINT.	0.001709557	0.1709 %	0.020101953	0.000034365	-0.000034365	0.001675192
030.70	LA CO FLOOD CONTROL MAINT	0.009674595	0.9674 %	0.020101953	0.000194478	-0.000194478	0.009480117
066.50	CO SANIT DIST NO 15 OPERATING	0.013054959	1.3054 %	0.020101953	0.000262430	-0.000262430	0.012792529
368.05	UPPER SAN GAB. VY. MUN. WATER	0.000562588	0.0562 %	0.020101953	0.000011309	-0.000011309	0.000551279
400.00	EDUCATIONAL REV AUGMENTATION FD	0.068961618	6.8961 %	0.020101953	0.001386263	EXEMPT	0.068961618
400.01	EDUCATIONAL AUG FD IMPOUND	0.131877650	13.1877 %	0.020101953	0.002650998	EXEMPT	0.131877650
400.15	COUNTY SCHOOL SERVICES	0.001400875	0.1400 %	0.020101953	0.000028160	EXEMPT	0.001400875
400.21	CHILDREN'S INSTIL TUITION FUND	0.002780212	0.2780 %	0.020101953	0.000055887	EXEMPT	0.002780212
791.04	CITRUS COMMUNITY COLLEGE DIST	0.024588176	2.4588 %	0.020101953	0.000494270	EXEMPT	0.024588176
791.20	CHILDREN'S CTR FUND CITRUS C C	0.000641345	0.0641 %	0.020101953	0.000012892	EXEMPT	0.000641345
895.03	MONROVIA UNIFIED SCHOOL DISTRICT	0.211709671	21.1709 %	0.020101953	0.004255777	EXEMPT	0.211709671
895.06	CO.SCH.SERV.FD.- MONROVIA	0.009067345	0.9067 %	0.020101953	0.000182271	EXEMPT	0.009067345
895.07	DEV.CTR.HDCPD.MINOR-MONROVIA	0.000997638	0.0997 %	0.020101953	0.000020054	EXEMPT	0.000997638

PROPERTY TAX TRANSFER RESOLUTION WORKSHEET
FISCAL YEAR 2014-2015

PREPARED 06/02/2015 PAGE 2

ANNEXATION NUMBER: PE 75-1113 PROJECT NAME: PETITION NO. 75-1113

ACCOUNT #	TAXING AGENCY	CURRENT TAX SHARE	PERCENT	PROPOSED DIST SHARE	TRA: 06264	ALLOCATED SHARE	ADJUSTMENTS	NET SHARE
895.20	MONROVIA UNIF. CHILDRENS CTR FD	0.0000891721	0.0891 %	0.020101953		0.000017925	EXEMPT	0.0000891721
***019.40	CO LIGHTING MAINT DIST NO 1687	0.0000000000	0.0000 %	0.020101953		0.0000000000	0.0000000000	0.010997456
	TOTAL:	1.0000000000	100.0000 %			0.020101953	-0.010997456	1.0000000000

The foregoing resolution was adopted on the _____ day of _____ 2016,
by the Board of Supervisors of the County of Los Angeles and ex officio the governing
body of all other special assessment and taxing districts, agencies, and authorities for
which said Board so acts.

LORI GLASGOW
Executive Officer of the
Board of Supervisors of the
County of Los Angeles

By _____
Deputy

APPROVED AS TO FORM:

MARY C. WICKHAM
County Counsel

By C. Suzuki for Talin Halabi
Deputy