

Los Angeles County Landmark Evaluation Report

The Doumakes House
4918 Angeles Vista Boulevard, View Park, California
APN: 5013-004-004

FINAL VERSION

February 2016



Prepared for:

Los Angeles County
Department of Regional
Planning
Historic Preservation
320 W. Temple Street
13th Floor
Los Angeles, California 90012

Prepared by:

Shannon Davis, M.A.,
Architectural Historian
Marilyn Novell, M.S.,
Architectural Historian



20 N. Raymond Ave. Suite 220
Pasadena, CA 91103
(626) 793-7395

ASM Project Number 24440.01

Los Angeles County Landmark Evaluation Report

The Doumakes House
4918 Angeles Vista Boulevard, View Park, California
APN: 5013-004-004

Prepared for:

Los Angeles County Department of Regional Planning
Historic Preservation
320 W. Temple Street, 13th Floor
Los Angeles, California 90012

Prepared by:

Shannon Davis, M.A., Architectural Historian
Marilyn Novell, M.S., Architectural Historian

ASM Affiliates, Inc.
20 N. Raymond Boulevard, Ste. 220
Pasadena, California 91103

TABLE OF CONTENTS

Chapter	Page
1. INTRODUCTION.....	1
FINDINGS.....	1
METHODOLOGY.....	1
2. BACKGROUND INFORMATION.....	3
PROPERTY DESCRIPTION AND CONSTRUCTION HISTORY.....	3
Public Records.....	19
3. HISTORICAL CONTEXT	21
THE NEIGHBORHOOD: VIEW PARK.....	21
HISTORICAL SIGNIFICANCE OF THE DOUMAKES HOUSE.....	24
Association with the Doumakes Family and Marshmallow Manufacturing.....	24
Architectural Style: Spanish Colonial Revival.....	25
4. EVALUATION OF HISTORICAL SIGNIFICANCE	27
CRITERIA FOR EVALUATION.....	27
County of Los Angeles Landmark Criteria.....	27
ASSESSMENT OF ELIGIBILITY.....	28
EVALUATION OF HISTORICAL INTEGRITY.....	31
5. CONCLUSION	33
REFERENCES.....	35
APPENDICES	37
APPENDIX A. Building Research Records	
APPENDIX B. Sanborn Maps	

LIST OF FIGURES

	Page
Figure 1. Project location map.....	4
Figure 2. Project vicinity map.	5
Figure 3. Historical tract map.....	6
Figure 4. Historical tract map detail.	7
Figure 5. Current tract map with 4918 Angeles Vista Boulevard highlighted.	8
Figure 6. Aerial view, looking northeast of what is now View Park overlooking 4900 Angeles Vista Boulevard and Mullen and Olympiad Drive with Crenshaw Boulevard to the top.	9
Figure 7. View toward the south of the north (primary) façade.	9
Figure 8. View toward the southwest of the north and east facades.....	10
Figure 9. View toward the southeast of the north (primary) façade.	10
Figure 10. View toward north of south façade.....	11
Figure 11. View toward southwest from second-floor southwest corner patio.....	11
Figure 12. Interior view from dining room toward central hall and entrance.	12
Figure 13. Interior view of living room fireplace.....	12
Figure 14. Interior view of living room toward north.	13
Figure 15. View of library on first floor.	13
Figure 16. View of main staircase from first floor hall.....	14
Figure 17. View of carved wood doors in second-floor hall.....	15
Figure 18. Detail of carved wood door.	16
Figure 19a. Interior view of second-floor bathroom.....	17
Figure 19b. Interior view of additional second-floor bathroom.	18
Figure 20. Overview of neighborhood.	22
Figure 21. Overview of neighborhood.	23
Figure 22. Overview of neighborhood.	23

LIST OF TABLES

	Page
Table 1. Chain of Ownership, 4918 Angeles Vista.....	19

1. INTRODUCTION

In 2015, the County of Los Angeles enacted a Historic Preservation Ordinance establishing a County Register of Landmarks and Historic Districts with the intention of recording and maintaining an inventory of County historical resources, with nominations to be reviewed by a Landmarks Commission and approved by the Board of Supervisors (Ord. 2015-0033 § 3, 2015). Accordingly, ASM Affiliates, Inc., prepared this landmark evaluation report to document and evaluate the potential local significance and landmark eligibility of the Doumakes House, a single-family residence at 4918 Angeles Vista Boulevard in the community of View Park, County of Los Angeles, California. Included in the report are a brief summary of the findings, a discussion of the survey and research methodology, background information, a brief description of the property and the history of its construction, a history of the View Park community and the Doumakes House, County landmark and other regulatory criteria under consideration, a statement of significance, and a conclusion. Photographs, maps, and other relevant support materials are included in the report.

FINDINGS

The Doumakes House appears to satisfy two of the criteria for landmark status as set forth in the County of Los Angeles Historic Preservation Ordinance Criteria for Designation of Landmarks and Historic Districts (Ord. 2015-0033 § 3, 2015). The ordinance states that a structure is eligible to be designated as a landmark if it is 50 years of age or older and satisfies one or more of the criteria. Built in 1928, the house is more than 50 years old. Because of its association with the Doumakes family during the time that they founded and operated the Doumak Company, the property appears to satisfy Criterion A.2 for association with the lives of persons who are important in local history. As a good example of a typical Spanish Colonial Revival single family residence, popular during the 1920s in Los Angeles, the property appears to satisfy Criterion A.3 as a representation of an architectural style and period. Furthermore, the Doumakes House retains sufficient integrity, in both interior and exterior, to convey its historical significance. For these reasons, the property appears to be eligible for County of Los Angeles landmark status.

METHODOLOGY

The evaluation was conducted in conformance with nationally accepted methodology established by the National Register of Historic Places (NRHP) guidance on conducting historic building evaluations (specifically, NRHP Bulletin *How to Apply the National Register Criteria for Evaluation*), as well as state-specific guidance from the California Office of Historic Preservation's *Instructions for Recording Historical Resources*. In preparing this evaluation of the Doumakes House, ASM considered a number of factors relevant to making a recommendation of eligibility, including:

- the history of the View Park community;
- the history of the property's construction and use;
- the property's association with important people or events;
- whether the property is the work of a master architect, craftsman, artist, or landscaper;
- whether the residence is an outstanding example of a particular architectural style or method of construction;
- previous evaluations of the property; and
- whether the residence has undergone structural alterations over the years, the extent to which its historical integrity has been compromised, and the current condition of the property.

1. Introduction

ASM examined material provided by the owner of the property and the County of Los Angeles in support of the Landmark and Historic District Nomination Form submitted to the County on October 26, 2015 (Permit no. R2015-03701). Materials used in conducting this evaluation include the National Register Nomination Form for the View Park Historic District (approval pending); U.S. Census reports; County Assessor's data, maps, including tract maps and Sanborn Fire Insurance Maps; digital archives including the USC Digital Library; newspaper archives including those of the Los Angeles Times; as well as biographical information on the Doumakes family, including architectural drawings, historical photos, and other documentation related to the history of the property at 4918 Angeles Vista Boulevard.

ASM Affiliates, Inc., conducted an intensive-level survey of the property on December 3, 2015, including the exterior and interior. In addition to a close visual inspection of the property, including house, garage, and landscaping, ASM documented the property with photographs and detailed field notes.

2. BACKGROUND INFORMATION

The single-family residence at 4918 Angeles Vista Boulevard (APN 5013-004-004) is located in unincorporated Los Angeles County in the View Park neighborhood. It is described as Lot 523 of Tract No. 5535, which measures approximately 63 feet (ft.) by 124 ft. and comprises 7,803 square ft. or .17 acre. James Doumakes is identified as the original owner in the Los Angeles County Assessor Tax Rolls. The north-facing house sits mid-block on the south side of Angeles Vista Boulevard between West Boulevard and Chesley Avenue, surrounded by residences of similar size on parcels of similar size. The house under study, built in 1928 according to Los Angeles Tax Assessor's data, might have been among the first in the subdivision. An aerial photo of View Park in the vicinity of the house shows sparse development as late as 1937 (Figures 1-6).

The View Park Historic District has been nominated for listing in the NRHP (Horak and Shannon 2015). (At the time of this report, listing is pending approval.) For a detailed description of the subdivision and the district, see excerpts from the nomination below in the Historical Context section of this report.

PROPERTY DESCRIPTION AND CONSTRUCTION HISTORY

The Doumakes House at 4918 Angeles Vista Boulevard was built in the Spanish Colonial Revival style. The single-family two-story house comprises 3,117 square ft. on two levels, including four bedrooms and three bathrooms (Figure 7). It sits on a parcel that slopes down to the south, where a third (basement) level is exposed. The house is composed of a rectangular plan with a one-story wing projecting from the primary façade. A two-story cylindrical tower containing the primary entrance joins the wing with the main mass of the house. The house is clad in smooth stucco and capped with a clay tile, cross-gabled roof with a moderate pitch, with exposed rafter tails on the slightly overhanging eave; the gable ends of the roof are flush with the wall below. Roof features include a cylindrical tower capped by a moderately pitched clay tile roof and finial. Exterior details are concentrated on the primary façade and include a wood plank primary entrance door with one small light and iron grille deeply recessed into an arched opening in the tower. Directly above the entryway is a French window with no surround at the second level of the tower. A set of three recessed narrow arched windows to the left of the primary entrance and a large multi-light window centered on the north wing mark the location of the living room. Additional fenestration consists of a group of windows recessed to the left of the primary entrance, a set of french doors with a wide stucco surround opening on to a Juliette balcony at the second level, another window with a similar wide stucco surround to the right of the primary entrance, and a multi-light French window with no surround directly above the entrance. A distinctive feature of the primary façade is a wood balcony with turned columns and wood railing projecting from the second floor and supported by exposed wood beams. The south façade is composed of three segments, with the center slightly set back from the two side segments. Fenestration at the back and at the sides consists of simple double-hung sash windows; a projecting rectangular bay at the center of the south façade contains a variety of windows on all sides and is capped with a slightly sloped shed roof. The southeast corner of the second level contains an open patio with iron railing and no roof. The property includes a detached, three-vehicle garage with a parapet capped with clay tile toward the back (south) of the parcel; the garage is accessed by a driveway that runs from the street along the east side of the house (Figures 8-10).

The front landscaping consists of drought-tolerant plantings. The original lawn was removed in 2013 by the current owner. In addition to a large concrete parking area, the rear of the house has grass with ficus trees on the east side, and a lemon tree and bottlebrush on the west side.

2. Background Information



Figure 1. Project location map.
Source: ASM Affiliates. Date: December 2015.

The interior of the house retains many original details including hardwood floors, bathroom tiles, iron light sconces, iron chandelier, and iron pendant lights. The house maintains its original brass hardware and door hinges on all doors as well as drawer hardware on cabinets and shelves. Distinctive features of the interior are seven ornate, detailed hand-carved wooden doors depicting various characters and motifs. All of the wood French windows and doors in the house are original. Some of the hallways retain original dark wood paneling. The stairway features original iron railings (Figures 11-19).

Alterations include a projecting bay window on the south façade, replacement of railings and floor on the second-story balcony, and the addition of metal security bars to all of the first-floor windows, with the exception of the large arched window in the primary facade. In the late 1950s, the kitchen was remodeled, and 11 small wood windows in various bedrooms, bathrooms, and hallways were replaced with jalousie windows. A large bay window in the first-floor den was removed and replaced with a sunroom. In 2012, the original hardwood floors, iron lighting, and hand-carved doors were restored, and a second-floor enclosed sunroom that had been added was removed, with the space restored to its original balcony configuration.

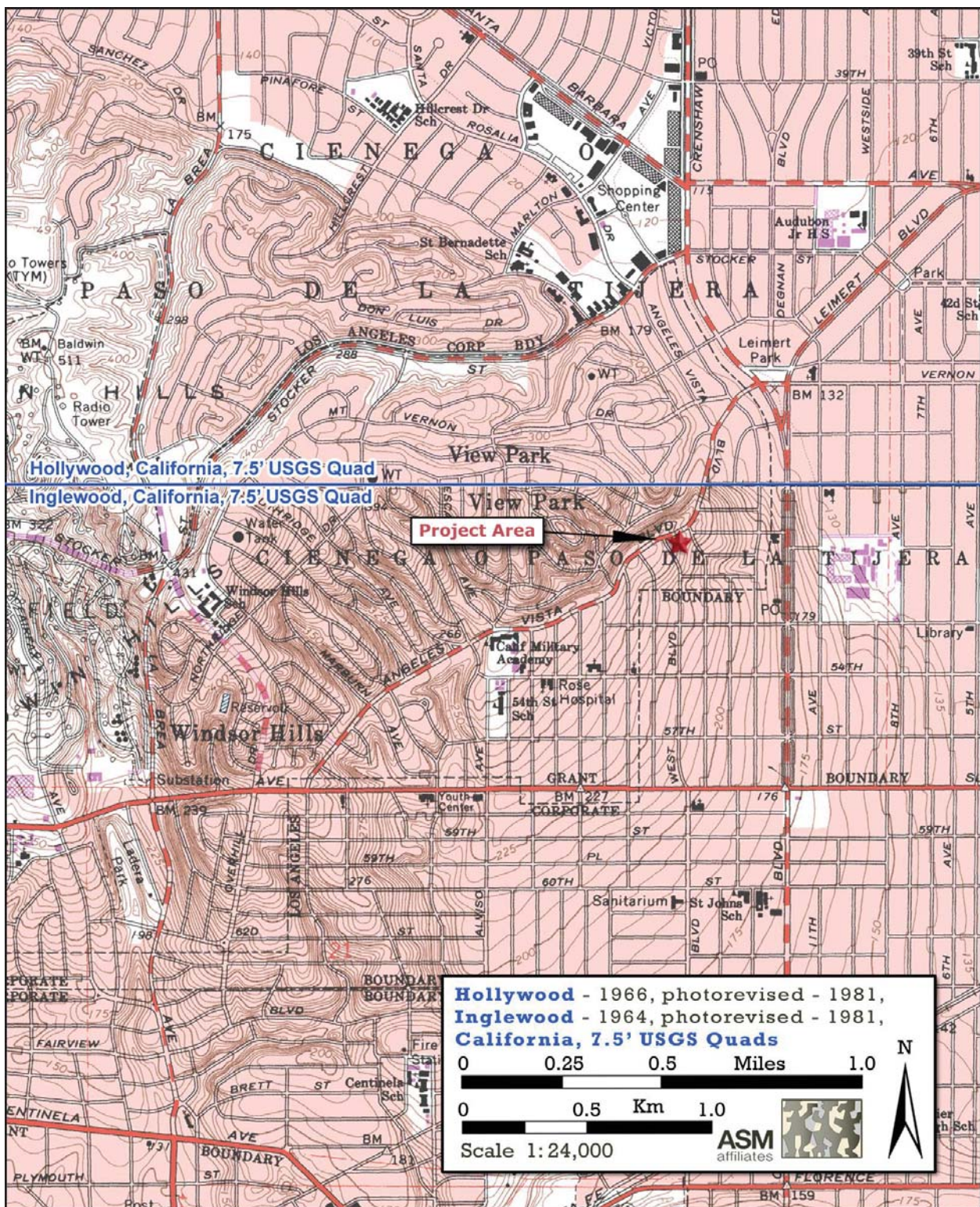


Figure 2. Project vicinity map.
Source: ASM Affiliates. Date: December 2015.

2. Background Information

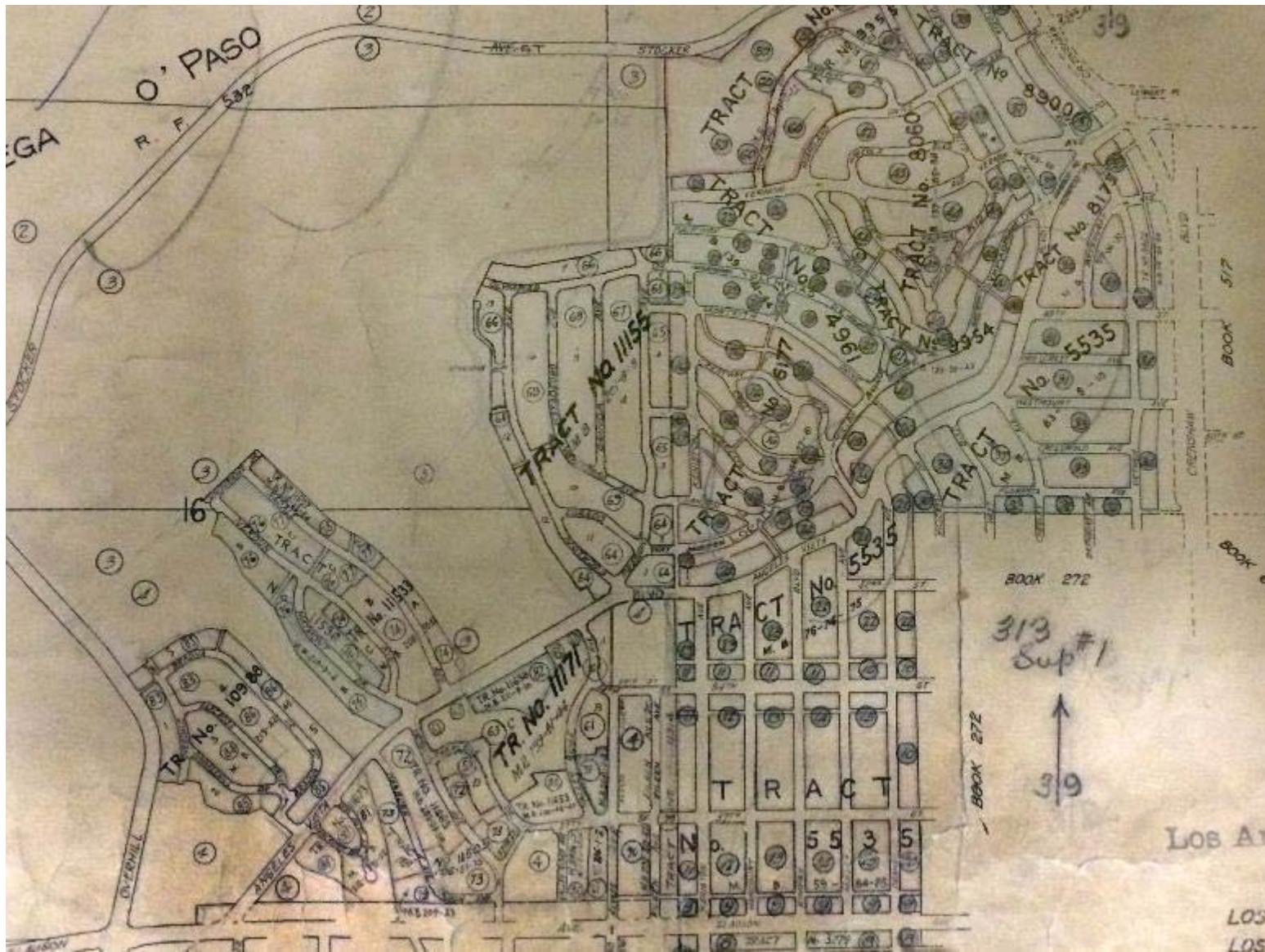


Figure 3. Historical tract map.
Source: Los Angeles County records. n.d.

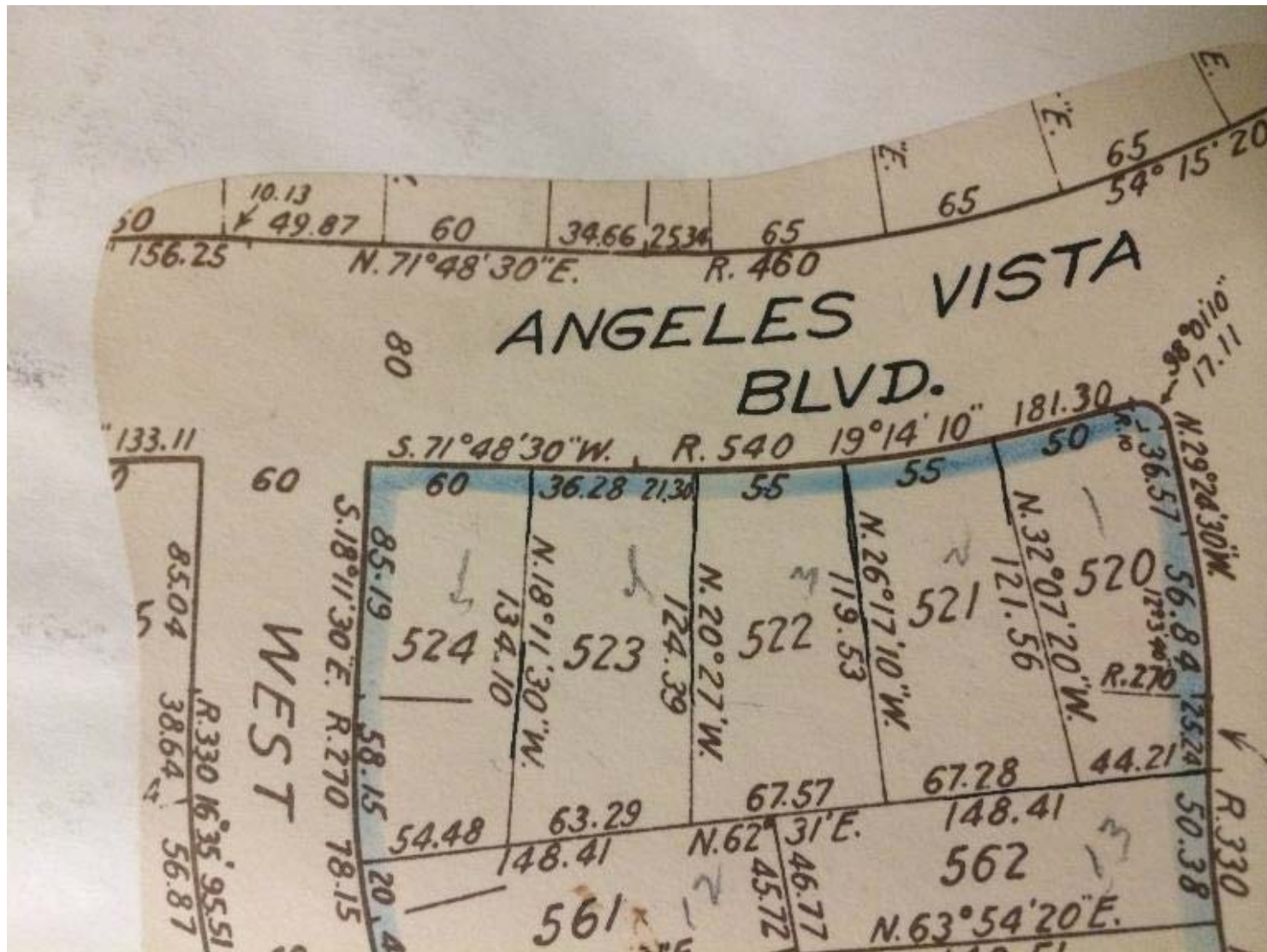


Figure 4. Historical tract map detail.
Source: Los Angeles County records. n.d.

2. Background Information

5013 | 4
ASL 1" = 80'

REVISED

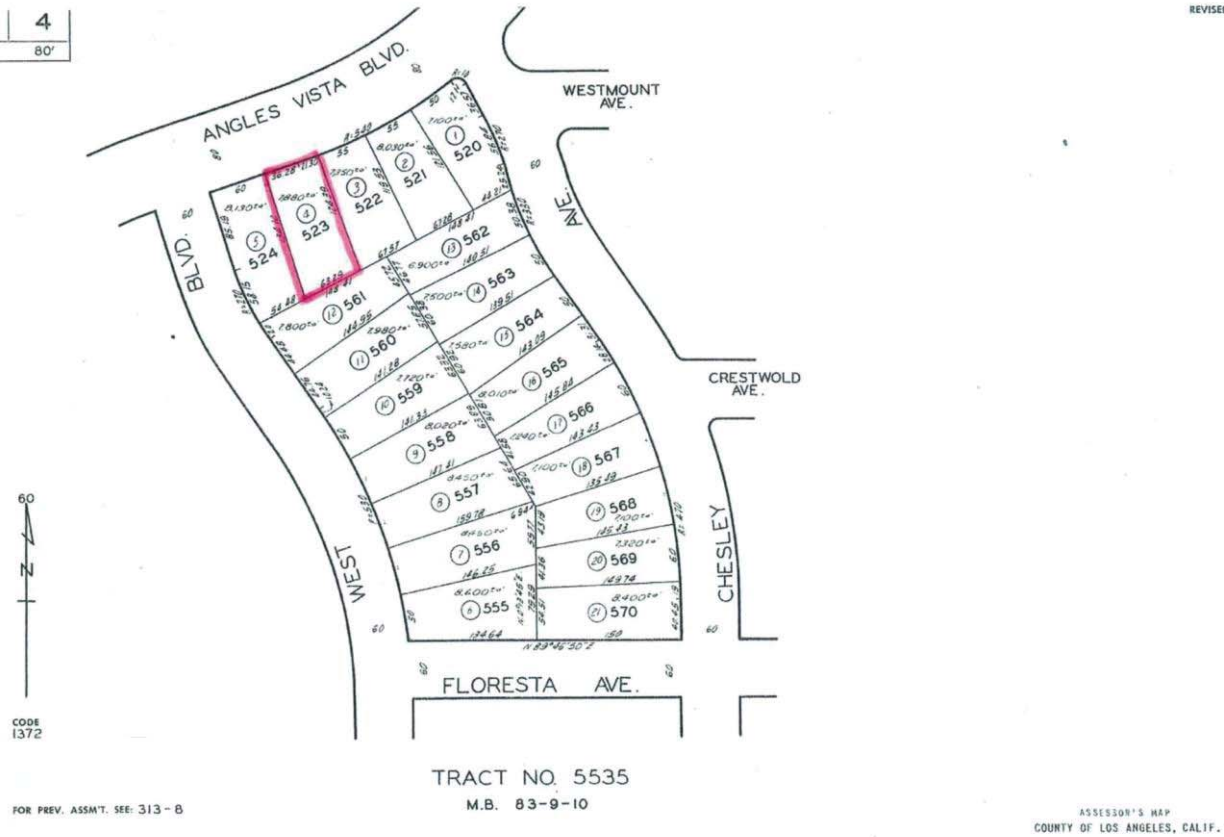


Figure 5. Current tract map with 4918 Angeles Vista Boulevard highlighted.
Source: Los Angeles County Tax Assessor.



Figure 6. Aerial view, looking northeast of what is now View Park overlooking 4900 Angeles Vista Boulevard and Mullen and Olympiad Drive with Crenshaw Boulevard to the top.
Source: University of Southern California Digital Library, Dick Whittington Photography Collection, 1924-1987. Date: 1937.



Figure 7. View toward the south of the north (primary) façade.
Source: Christopher Nolasco Photography. n.d.



Figure 8. View toward the southwest of the north and east facades.
Source: ASM Affiliates: Date: December 3, 2015.



Figure 9. View toward the southeast of the north (primary) façade.
Source: ASM Affiliates: Date: December 3, 2015.



Figure 10. View toward north of south façade.
Source: ASM Affiliates: Date: December 3, 2015.



Figure 11. View toward southwest from second-floor southwest corner patio.
Source: ASM Affiliates: Date: December 3, 2015.

2. Background Information



Figure 12. Interior view from dining room toward central hall and entrance.
Source: ASM Affiliates: Date: December 3, 2015.



Figure 13. Interior view of living room fireplace.
Source: ASM Affiliates: Date: December 3, 2015.



Figure 14. Interior view of living room toward north.
Source: ASM Affiliates: Date: December 3, 2015



Figure 15. View of library on first floor.
Source: ASM Affiliates: Date: December 3, 2015.



Figure 16. View of main staircase from first floor hall.
Source: ASM Affiliates; Date: December 3, 2015.

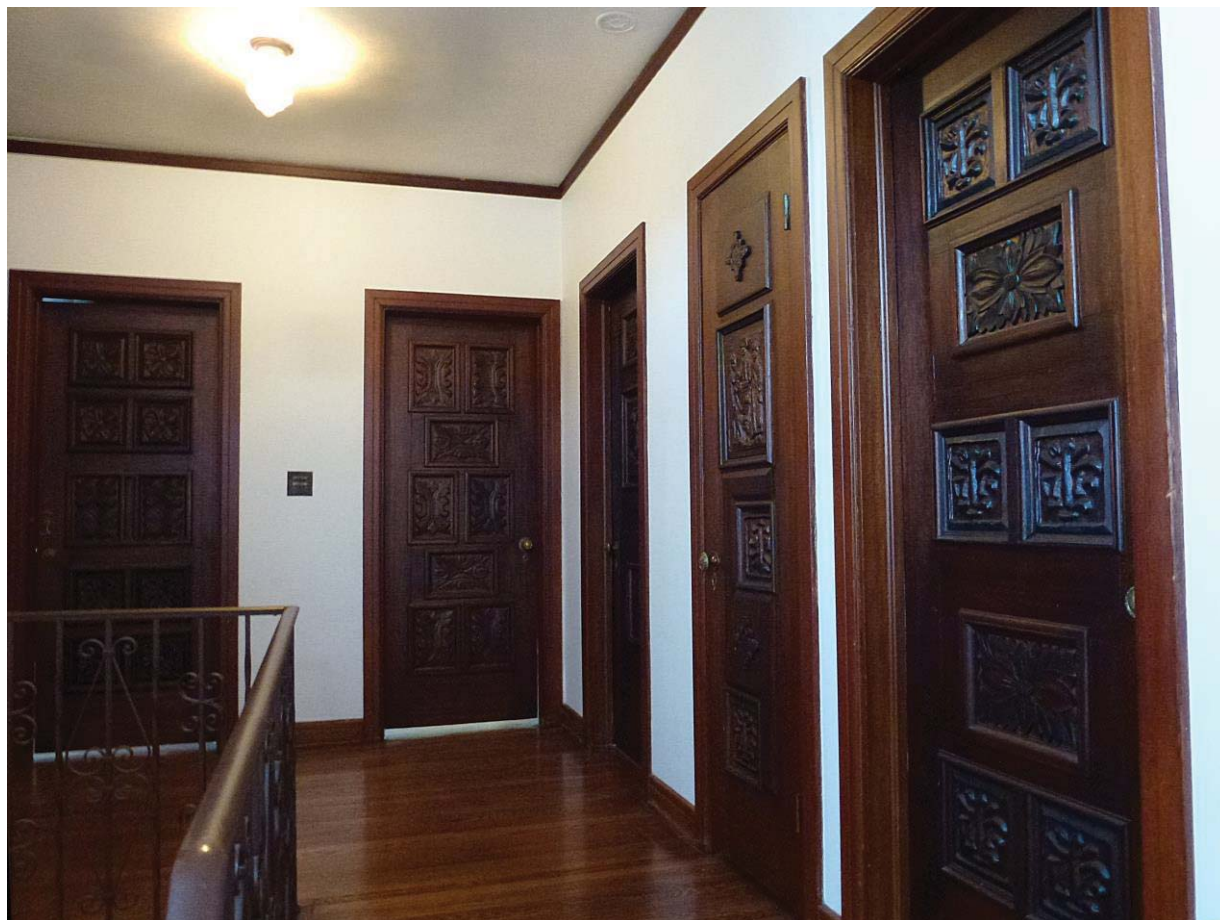


Figure 17. View of carved wood doors in second-floor hall.
Source: ASM Affiliates: Date: December 3, 2015.



Figure 18. Detail of carved wood door.
Source: ASM Affiliates; Date: December 3, 2015.



Figure 19a. Interior view of second-floor bathroom.
Source: ASM Affiliates; Date: December 3, 2015.



Figure 19b. Interior view of additional second-floor bathroom.
Source: ASM Affiliates; Date: December 3, 2015.

Public Records

A review of Los Angeles County public records indicates that the property was granted to Los Angeles Investment Company on September 6, 1924. Building permits were not used in Los Angeles prior to 1933, and no original permits or subsequent permits (for alterations, additions, etc.) were located.

Los Angeles County staff conducted a chain of title search for the property. The results show James Doumakes acquiring the property in 1927, and the property apparently transferring out of the Doumakes family in 1961. The results are shown in the Table 1 below.

Table 1. Chain of Ownership, 4918 Angeles Vista

Date Recorded	Grantor	Grantee
September 6, 1924	L.A. Investment Company	B. Armstrong
June 15, 1927	B. Armstrong	James Doumakes
October 31, 1956	James Doumakes	—
October 27, 1961	M. Doumakes	Buck Wallace

3. HISTORICAL CONTEXT

THE NEIGHBORHOOD: VIEW PARK

The following text is excerpted and adapted from the National Register Nomination Form for the View Park Historic District (Horak and Shannon Register 2015).

The View Park Historic District (pending approval), of which the Doumakes House is a contributor, is located in unincorporated Los Angeles County, approximately nine miles southwest of downtown Los Angeles. The larger View Park neighborhood rests on the southeastern face and the crest of the Baldwin Hills, a low-lying mountain range in west central Los Angeles County. The roughly 450-acre View Park development was initially subdivided in 1923 by the Los Angeles Investment Company. Subdivision continued for two decades, and the construction of single- and multiple-family dwellings occurred incrementally from the mid-1920s into the 1960s (historicaerials.com 1948, 1952, 1964). View Park is mainly composed of single-family residences, with a small number of multi-family residences, as well as one commercial building (the Los Angeles Investment Company's office) and small neighborhood park. Although the area was developed over time by a single developer—the Los Angeles Investment Company—houses were designed by multiple architects and builders and adhered to loose guidelines enforced by an architectural review board. Therefore, the architectural character of the district is consistent in style, scale, and massing, although diverse in terms of individual house design. In general, the part of View Park that was developed in the pre-World War II era is located east of Presidio Drive and features houses designed predominantly in Period Revival styles, such as Spanish Colonial Revival, American Colonial Revival, Monterey Revival, Mediterranean Revival, and French Revival. The area to the west of Presidio Drive is characterized by postwar styles, especially those associated with the Ranch style such as Oriental, Traditional, and Contemporary Ranch. View Park contains numerous examples of Minimal Traditional houses, scattered throughout the district. The View Park Historic District retains a high level of integrity; of 1,789 total properties, 1,479 are district contributors and 310 are district non-contributors (Figures 20-22).

The View Park Historic District is eligible under Criterion A at the local level of significance. It possesses significance in two areas: Community Planning and Development and Black Ethnic Heritage. The District contains a high percentage of contributing buildings within its borders and retains sufficient integrity to convey its significance despite some alterations to individual buildings and a small amount of infill.

The buildings in the District were erected from the 1920s to 1960s during a period of rapid population growth in Southern California by one of Los Angeles' most prominent development companies, the Los Angeles Investment Company. Developed in the Baldwin Hills with views of the city and mountains, View Park was constructed for middle-income and affluent homeowners. With the use of racially restrictive covenants, the neighborhood was initially restricted to white residents and remained homogeneous through the 1950s. In the first half of the twentieth century, the population of Los Angeles increased rapidly and residential development occurred at a frenzied pace. Out of this grew powerful development companies with unique organizational structures and competitive marketing tactics. View Park was developed by one such company, the Los Angeles Investment Company, which was a significant player in Los Angeles real estate development, recognized for influencing the local housing market and landscape, as well as building and community development practices in the region and beyond. The physical manifestations of the company's organization and strategies are evident in View Park, one of the company's most important planned community developments, making the View Park Historic District a significant representation of a middle- to upper-middle class single-family residential neighborhood developed by an important development company to accommodate the influx of residents to Los Angeles during the first part of the

3. Historical Context

twentieth century. Additionally, View Park has an unusually long, approximately 40-year, building period and offers within its boundaries a snapshot narrative of the building and community development trends that were occurring throughout Los Angeles during its primary periods of growth from the 1920s through the 1960s.



Figure 20. Overview of neighborhood.
Source: ASM Affiliates. Date: December 3, 2015.

View Park is also significant in the area of Black Ethnic Heritage. The View Park Historic District is associated with the racially restrictive housing practices that left an indelible mark on our country's history, as well as the rise of the black middle and upper classes in the United States after World War II and their role in combating housing discrimination and segregation. View Park's history parallels the pattern of events that unfolded in Los Angeles and across the country as a result of discriminatory practices in the housing industry and federal policy, which restricted housing opportunities from people of color and promoted segregation. After restrictive housing practices were declared unconstitutional, affluent African Americans had a significant role in breaking down housing barriers and promoting improved racial relations. Though early black residents of View Park promoted integration as part of the Civil Rights' era neighborhood stabilization movement, the neighborhood would become predominately black by the end of the 1960s. In doing so, however—while retaining its prestige—View Park became distinct as one of a small number of neighborhoods in Los Angeles and the country that were both black and affluent. For this distinction, and for its ability to tell the story of the country's discriminatory housing practices and how those practices affected Los Angeles, the District is significant.



Figure 21. Overview of neighborhood.
Source: ASM Affiliates. Date: December 3, 2015.



Figure 22. Overview of neighborhood.
Source: ASM Affiliates. Date: December 3, 2015

The View Park Historic District's period of significance begins in 1923 and ends in 1970, spanning the District's 35-year development period, and including its transition from a neighborhood in which restrictive covenants were strictly enforced to its establishment as a thriving and prosperous black community. Specifically, the period of significance for the area of Community Planning and Development is 1923 to 1958, with the start date reflecting the year in which the Los Angeles Investment Company began development activity in View Park and the end date marking the year in which the last section of View Park was subdivided by the company. Although building activity continued for several years after 1958 by external businesses with oversight by the Los Angeles Investment Company, the company's major development activities ceased in View Park after this date. The period of significance for the area of Black Ethnic Heritage is 1957 to 1970. The start date reflects the year in which the earliest known black homeowners moved into the View Park Historic District, paving the way for additional black buyers in the neighborhood. The end date reflects the year by which the community had become predominately black.

HISTORICAL SIGNIFICANCE OF THE DOUMAKES HOUSE

Association with the Doumakes Family and Marshmallow Manufacturing

James Doumakes (1879-1956), the original owner of the Doumakes House, was a Greek immigrant who arrived in the United States in 1900. James Doumakes and his son were not merely confectioners, but established a marshmallow manufacturing business that grew over time to national prominence. The Doumakes Marshmallow Company, founded in Los Angeles in 1921, held at least two patents associated with the production of marshmallows, one issued in 1928 (U.S. Patent Office 1928) and another issued in 1958 (U.S. Patent Office 1958). A 1956 application described Doumakes' claim to "[a] continuous process for manufacturing marshmallows comprising the steps of preparing a mixture of saccharides, gelatin and moisture, the moisture comprising [text obscured]" Application April 17, 1956, Serial No. 578,653 / 6 Claims. (Cl. 99-134), (p. 469).

The rise of the business to national importance occurred gradually. In 1914, Doumakes & Coulures leased a store at 314 W. Seventh Street in Los Angeles for the purpose of candy manufacturing (Los Angeles Times 1914). In a Los Angeles City Directory from that year, James Doumakes' occupation was listed as candymaker (Appendix 2: City Records Research). The business section of a 1922 city directory listed James "Doumak" under the heading "Confectioners—Manufacturers and Wholesalers" at 1739 W. 22nd Street, with his residence across the street at 1722 W. 22nd Street (Los Angeles City Directory 1922:3005; 1923:1071; 1925:2120; 1926:2214; also see Appendix 3: Sanborn Fire Insurance Maps). The company moved sometime after 1922 and by 1928 was located at 711 E. Jefferson Boulevard (Los Angeles City Directory 1928:2314; 1932:2587; also see Appendix 3: Sanborn Fire Insurance Maps). This was one year after James purchased the lot in View Park on which to erect a new residence. The marshmallow company remained at the location on Jefferson Boulevard for an indeterminate number of years, before the company moved from Los Angeles in 1961.

James's occupation was listed in the 1930 U.S. Census as candy manufacturer, and by that time he had moved to 4918 Angeles Vista Boulevard, along with his wife (Maria), four sons (John, Alexander, Milton, and Arthur), and one daughter (Frances) (Appendix A: City Records Research) (U.S. Census 1930; Los Angeles City Directory 1930:788). In 1932, Doumakes' business was specified as "marshmallow manufacturing" (Los Angeles City Directory 1932:621), and by 1934, the listing was "Doumakes' Marshmallow Co.," with James and his son Alex Doumakes listed as owners and Alex listed as "foreman" (Los Angeles City Directory 1932, 1938).

Most of the other buildings in Los Angeles associated with James Doumakes and the Doumakes Marshmallow Company (and its predecessors) have been demolished. The commercial building in which the business was located in the 1920s on 22nd Street was demolished by 1964, when the entire north side of

the street was cleared for the construction of Interstate 10 (historicaerials.com 1954, 1964). The building where the company was located in its earliest years before Doumakes established his own business specializing in marshmallows at 711 E. Jefferson Boulevard was demolished some time between 1972 and 1980 (historicaerials.com 1972, 1980). Of the historical buildings associated with the Doumakes family and its marshmallow business, only the family house on 22nd Street and the View Park house at 4918 Angeles Vista remain.

Marshmallow likely was first used in Egypt as a medicinal treatment for sore throat, which involved drawing extracts from the root of the marshmallow plant (*Althaea officinalis*). In the 1800s, candy makers in France developed marshmallows in their modern form (Petkewich 2006). The French version, called *pâte de guimauve*, included an egg white meringue and was often flavored with rosewater (Goldstein 2015:430-431). The process was time-consuming and laborious, as marshmallows were cast-mold, and each marshmallow had to “sweat” for several hours to form a delicate skin. In 1902, an article discussing trends in candy claimed the marshmallow to be the “the reigning favorite among sweetmeats.” The article described the complex process of producing the candy in those days: “It is first mixed in great copper kettles. After being thoroughly beaten until it has assumed the desired consistency the material is deftly transferred to the moulds by swift-fingered girls. When the marshmallow has cooled in the moulds it is in shape for display in the windows of the candy stores” (Los Angeles Times 1902). Many years later, in 1954, Alex Doumakes developed a more efficient process that treated the raw mixture as an industrial material. Machines forced the marshmallow mixture through tubes, subjected it to blasts of gas at 200 pounds per square inch, extruded it into long ropes and then automatically cut it into regular bite-size pieces. This innovation allowed the mass production of marshmallows in a cost-efficient manner that slashed production time from 24 hours to 60 minutes and fueled their popularity (Rivenburg 1995).

Early twentieth-century advertisements for marshmallows in Los Angeles newspapers described “fresh marshmallow drops” and “toasted, egg whipped” marshmallows at relatively high prices (Los Angeles Times 1903). Led by the Doumak brand, marshmallows went from being a luxury confection to an everyday treat, as evidenced by the regular inclusion of marshmallows in full-page grocery and drug store advertisements beginning in the 1950s (Los Angeles Times 1951, 1952a, 1952b, 1953, 1962a, 1962b, 1962c). Along with staples such as flour, margarine, and canned corn, “fluffy white,” “Snack Size” Doumak marshmallows were offered at prices from 10 cents to 29 cents. As an indication of the popularity of marshmallows in the 1950s and 1960s, one ad for the Food Giant grocery store claimed that “Doumak is best for your cooking, salads, and desserts” (Los Angeles Times 1962a).

In 1961, the Doumakes family moved the company to its current location outside Chicago, Illinois. In 2003, Doumak acquired the nationally known Campfire brand.

Architectural Style: Spanish Colonial Revival

Although Spanish Colonial Revival architecture is found throughout the United States, it is in California that the style flourished and came to represent a distinctly regional look associated with a particular period of time. Responding to a popular interest in Spanish missions and adobes at the end of the nineteenth century, California architects turned from the ubiquitous American Colonial style typical of residential architecture in the eastern United States toward a regional style called Mission Revival. Mission Revival integrated elements of California Mission architecture evocative of California’s past and various Mediterranean styles. By the 1910s, enthusiasm for the Mission Revival style was beginning to fade, and architects were looking for a fresh approach, with Bertram Goodhue leading the charge (Gebhard 2005:30). In 1915, when the Panama Canal opened, San Diego mounted the Panama-California Exposition to celebrate the occasion, and Goodhue was hired to design the group of buildings. The spread of the Spanish Colonial Revival architectural style in Southern California was directly attributed to what fairgoers observed at the exposition. Goodhue rejected the formality of the Renaissance and Neoclassical architecture

3. Historical Context

that had been typical of world's fairs in favor of a more casual architecture suited to the Southern California climate (Historic District Design Guidelines n.d.:59). The regional style took forms and details from the Spanish colonial architecture of Mexico, where Goodhue had traveled (Gebhard 2005:30).

Distinctive character-defining features of the Spanish Colonial Revival style include smooth stucco cladding and moderately pitched roofs covered with red clay half-barrel or S-curve tiles with narrow eaves. The massing is typically asymmetrical, and the roof form is often complex, with a mixing of side-gabled or cross-gabled sections. Cylindrical multi-level tower-like sections are also common, often housing the primary entrance. Exterior doors are often of heavy carved wood, sometimes with dramatic carving and a small light. Balconies, arcades, and courtyards are common. Fenestration might consist of a single focal arched window and smaller windows with turned spindle or wrought iron grilles (Historic District Design Guidelines n.d.:73-76).

4. EVALUATION OF HISTORICAL SIGNIFICANCE

CRITERIA FOR EVALUATION

This evaluation report applies the County of Los Angeles Landmark Criteria outlined in the Historic Preservation Ordinance. These criteria closely parallel guidelines established by the National Park Service and the California Office of Preservation for determination of eligibility for listing on the NRHP and the California Register of Historical Places (CHRH), respectively. In addition, the seven aspects of integrity, as defined by the NRHP (National Park Service 1997), are applied to ensure that the property is able to convey its historical significance. County of Los Angeles Landmark Criteria and National Park Service integrity guidelines are described in this section.

County of Los Angeles Landmark Criteria

Criteria for Designation of Landmarks and Historic Districts (Part 28 of Chapter 22.52.3060 of the Los Angeles County Code of Ordinances (Ord. 2015-0033 § 3, 2015; referred to herein as the Historic Preservation Ordinance) are as follows:

- A. A structure, site, object, tree, landscape, or natural land feature may be designated as a landmark if it is 50 years of age or older and satisfies one or more of the following criteria:
 - 1. It is associated with events that have made a significant contribution to the broad patterns of the history of the nation, State, County, or community in which it is located;
 - 2. It is associated with the lives of persons who are significant in the history of the nation, State, County, or community in which it is located;
 - 3. It embodies the distinctive characteristics of a type, architectural style, period, or method of construction, or represents the work of an architect, designer, engineer, or builder whose work is of significance to the nation, State, County, or community in which it is located; or possesses artistic values of significance to the nation, State, County, or community in which it is located;
 - 4. It has yielded, or may be likely to yield, significant and important information regarding the prehistory or history of the nation, State, County, or community in which it is located;
 - 5. It is listed, or has been formally determined eligible by the United States National Park Service for listing, in the National Register of Historic Places, or is listed, or has been formally determined eligible by the State Historical Resources Commission for listing, on the California Register of Historical Resources;
 - 6. If it is a tree, it is one of the largest or oldest trees of the species located in the County; or
 - 7. If it is a tree, landscape, or other natural land feature, it has historical significance due to an association with an historic event, person, site, street, or structure, or because it is a defining or significant outstanding feature of a neighborhood.
- B. Property less than 50 years of age may be designated as a landmark if it meets one or more of the criteria set forth in subsection A of this Section, and exhibits exceptional importance.
- C. The interior space of a property, or other space held open to the general public, including but not limited to a lobby, may be designated as a landmark or included in the landmark designation of a property if the space qualifies for designation as a landmark under subsections A or B of this Section.

- D. Historic districts. A geographic area, including a noncontiguous grouping of related properties, may be designated as an historic district if all of the following requirements are met:
1. More than 50 percent of owners in the proposed district consent to the designation;
 2. The proposed district satisfies one or more of the criteria set forth in subsections A.1 through A.5, inclusive, of this Section; and
 3. The proposed district exhibits either a concentration of historic, scenic, or sites containing common character-defining features, which contribute to each other and are unified aesthetically by plan, physical development, or architectural quality; or significant geographical patterns, associated with different eras of settlement and growth, particular transportation modes, or distinctive examples of parks or community planning.

Historical Integrity

Integrity is the ability of a property to convey its significance. The National Park Service publication *How to Apply the National Register Criteria for Evaluation* (NRHP Bulletin No. 15) establishes how to evaluate the integrity of a property. The evaluation of integrity must be grounded in an understanding of a property's physical features and how they relate to the concept of integrity. Determining which of these aspects is most important to a property requires knowing why, where, and when a property is significant. To retain historic integrity, a property must possess several, and usually most, aspects of integrity:

1. **Location** is the place where the historic property was constructed or the place where the historic event occurred.
2. **Design** is the combination of elements that create the form, plan, space, structure, and style of a property.
3. **Setting** is the physical environment of a historic property, and refers to the character of the site and the relationship to surrounding features and open space. Setting often refers to the basic physical conditions under which a property was built and the functions it was intended to serve. These features can be either natural or manmade, including vegetation, paths, fences, and relationships between other features or open space.
4. **Materials** are the physical elements that were combined or deposited during a particular period or time, and in a particular pattern or configuration to form a historic property.
5. **Workmanship** is the physical evidence of crafts of a particular culture or people during any given period of history or prehistory, and can be applied to the property as a whole, or to individual components.
6. **Feeling** is a property's expression of the aesthetic or historic sense of a particular period of time. It results from the presence of physical features that, when taken together, convey the property's historic character.
7. **Association** is the direct link between the important historic event or person and a historic property (National Park Service 1997:44-45).

ASSESSMENT OF ELIGIBILITY

In summary, based on current research and the above assessment, the Doumakes House at 4918 Angeles Vista Boulevard appears to meet the County of Los Angeles criteria for landmark status (22.52.3060). The property was evaluated according to the statutory criteria, as follows (Ord. 2015-0033 § 3, 2015):

A. The Doumakes House is more than 50 years of age and satisfies the following criteria for landmark status defined by the County of Los Angeles Historic Preservation Ordinance, which states that one or more criteria should be met for a property to qualify for the designation:

1. *It is associated with events that have made a significant contribution to the broad patterns of the history of the nation, State, County, or community in which it is located.*

Although the View Park Historic District appears to be eligible at the local level under comparable NRHP Criterion A for association with Community Planning and Development (1923-1970) and Black Ethnic Heritage (1957-1970), the Doumakes House is not a good individual representation of these broad patterns of history in the same way that the district is. Although the Doumakes family founded and operated a significant County business while residing at the property, the house is not directly associated with the operation of the business so that it could represent broad patterns of Commercial Development. Therefore, the property does not appear to satisfy this criterion for County of Los Angeles landmark status.

2. *It is associated with the lives of persons who are significant in the history of the nation, State, County, or community in which it is located.*

The Doumakes House is associated with the Doumakes family, who constructed the house and occupied it from 1928 until 1958. During that period of time, James Doumakes founded the Doumak Company, which grew to be one of the foremost manufacturers of marshmallows in the country. While living at the house, James's son Alex Doumakes developed an innovative method of manufacturing marshmallows that led to widespread popularity of the product and a corresponding expansion of the company. No other properties extant in Los Angeles County are as closely associated with the Doumakes family as their home of 30 years, during the important early years of the company and its development as a nationally prominent candy manufacturer. As such, the Doumakes House is eligible for County of Los Angeles landmark status on the County level under criterion A.2 for the area of significance of Commercial Development. The period of significance under criterion A.2 is 1928 to 1958, spanning the Doumakes family occupancy of the property and growth and prominence of their marshmallow business.

3. *It embodies the distinctive characteristics of a type, architectural style, period, or method of construction, or represents the work of an architect, designer, engineer, or builder whose work is of significance to the nation, State, County, or community in which it is located; or possesses artistic values of significance to the nation, State, County, or community in which it is located.*

The Doumakes House is a good representation of a typical Spanish Colonial Revival single-family residence in Los Angeles County. This architectural style was arguably the predominant style in Southern California during the 1920s. The Doumakes House possesses many of the character-defining features associated with the style, including smooth stucco walls, clay tile roof, cross-gabled roof form, asymmetrical massing, large arched window, wood entrance door, and a projecting wood balcony, as well as many typical interior features such as arched entries, stucco fireplace with alcove, wood and tile

4. Evaluation of Historical Significance

floors, and wood decorative details. As such, the Doumakes House is eligible for County of Los Angeles landmark status on the County level under criterion A.3 for the area of significance of Architecture. The period of significance under criterion A.2 is 1928 when the house was constructed. The original architect is unknown; as such, the property is not associated with an architect, designer, engineer, or builder whose work is of significance.

4. *It has yielded, or may be likely to yield, significant and important information regarding the prehistory or history of the nation, State, County, or community in which it is located.*

The property is not likely to yield significant information regarding prehistory or history of the area in which it is located. Therefore, it does not appear to satisfy this criterion for County of Los Angeles landmark status.

5. *It is listed, or has been formally determined eligible by the United States National Park Service for listing, in the National Register of Historic Places, or is listed, or has been formally determined eligible by the State Historical Resources Commission for listing, on the California Register of Historical Resources.*

The Doumakes House is not listed, nor has it been determined individually eligible for listing, in the NRHP; it is not listed, nor has it been determined eligible for individual listing, in the CRHR. Therefore, the property does not appear to satisfy this criterion for County of Los Angeles landmark status.

6. *If it is a tree, it is one of the largest or oldest trees of the species located in the County.*

No trees on this property meet this criterion.

7. *If it is a tree, landscape, or other natural land feature, it has historical significance due to an association with an historic event, person, site, street, or structure, or because it is a defining or significant outstanding feature of a neighborhood.*

The nominated property is not a natural land feature.

B. Property less than 50 years of age may be designated as a landmark if it meets one or more of the criteria set forth in subsection A of this Section, and exhibits exceptional importance.

The property is not less than 50 years of age. Therefore, this criterion does not apply to the application for landmark status of the property.

C. The interior space of a property, or other space held open to the general public, including but not limited to a lobby, may be designated as a landmark or included in the landmark designation of a property if the space qualifies for designation as a landmark under subsections A or B of this Section.

The property is a private residence that is not open to the general public. Therefore, this criterion does not apply to the application for landmark status of the property.

D. Historic districts. A geographic area, including a noncontiguous grouping of related properties, may be designated as an historic district if all of the following requirements are met:

1. *More than 50 percent of owners in the proposed district consent to the designation;*
2. *The proposed district satisfies one or more of the criteria set forth in subsections A.1 through A.5, inclusive, of this Section; and*
3. *The proposed district exhibits either a concentration of historic, scenic, or sites containing common character-defining features, which contribute to each other and are unified aesthetically by plan, physical development, or architectural quality; or significant geographical patterns, associated with different eras of settlement and growth, particular transportation modes, or distinctive examples of parks or community planning.*

The County Historic Preservation Ordinance defines a Historic District as “[a] contiguous or noncontiguous geographic area containing one or more contributing properties.” Designation of a single family residence, such as the Doumakes House, is not applicable under this criteria.

EVALUATION OF HISTORICAL INTEGRITY

The Doumakes House retains sufficient integrity to convey its historical significance. It retains all seven aspects of integrity of a historical resource, as defined by the National Park Service and the County Historic Preservation Ordinance, and as discussed in detail below.

1. **Location.** The Doumakes House has not been moved and thus retains integrity of location.
2. **Design.** The property retains the combination of elements that create its form, plan, space, structure, and style, including elements such as organization of space, proportion, scale, and character-defining features. Thus, the Doumakes House retains integrity of design.
3. **Setting.** The property is located in its original physical environment, including the character of the site and its relationship to surrounding features, other single-family residences of similar size, and vegetation. The setting around the property retains the basic physical conditions during the time when it was constructed, taking into account the changes that took place as the parcels in the View Park subdivision were rapidly built up during the 1920s. The house retains its function as a single-family residence that it was built to serve. Features such as street patterns, sidewalks, topography, and scale of houses on adjacent parcels remain consistent with their historical characteristics. Thus, the Doumakes House retains integrity of setting.
4. **Materials.** With minor alterations, the property retains most of its original physical elements and materials, including extensive use of hand-carved wood in the interior and use of wrought iron and red clay roofing tiles. Thus, the Doumakes House retains integrity of materials.
5. **Workmanship.** The property displays the physical evidence of crafts of a particular culture during the early part of the twentieth century in Southern California, including methods of applying stucco and plaster. Thus, the Doumakes House retains integrity of workmanship.

4. *Evaluation of Historical Significance*

6. **Feeling.** The property is fully expressive of the aesthetics and references of the time of construction, including the historical references associated with the historical revival architectural features. When viewed as a whole, these qualities convey the property's historical character. Thus, the Doumakes House retains integrity of feeling.
7. **Association.** The property has been minimally altered and retains a direct link between the important historic Doumakes family and the historic property. Thus, the Doumakes House retains integrity of association.

5. CONCLUSION

As discussed in this report, the Doumakes House at 4918 Angeles Vista Boulevard is more than 50 years of age and meets two of the criteria for landmark status as set forth in the County of Los Angeles Historic Preservation Ordinance Criteria for Designation of Landmarks and Historic Districts (Ord. 2015-0033 § 3, 2015). Because of its association with the Doumakes family during the time that they founded and operated the Doumak Company, the property satisfies Criterion A.2. for its association with “the lives of persons who are significant in the history of the nation, State, County, or community in which it is located,” on the County level under the area of significance of Commercial Development with a period of significance of 1928-1958. As a good example of a typical Spanish Colonial Revival single-family residence in Los Angeles County, the predominant architectural style in Southern California during the 1920s, the property “embodies the distinctive characteristics of a type, architectural style, period, or method of construction.” Therefore, it satisfies Criterion A.3. on the County level under the area of significance of Architecture with a period of significance of 1928. Furthermore, the Doumakes House retains sufficient integrity, in both interior and exterior, to convey its historical significance. Therefore, this evaluation report recommends the property eligible for County of Los Angeles landmark status.

REFERENCES

Gebhard, Patricia

- 2005 George Washington Smith: Architect of the Spanish Colonial Revival. Salt Lake City: Gibbs Smith.

Goldstein, Darra (ed.)

- 2015 The Oxford Companion to Sugar and Sweets. New York: Oxford University Press.

Historicaerials.com

- 1948, 1952, 1954, 1972, 1980

Historic District Design Guidelines

- n.d. Prepared for City of Glendale Historic Preservation Commission by Architectural Resources Group.

Horak, Katie, and Sandra Shannon

- 2015 National Register Nomination Form for the View Park Historic District (approval pending). Prepared by Architectural Resources Group. August 9, 2015.

Los Angeles City Directory

- 1914, 1922, 1923, 1925, 1926, 1928, 1930, 1932. Los Angeles: The Los Angeles Directory Company.

Los Angeles Times

- 1902 "Fashions in Candy Change." *Los Angeles Times*, December 11, 1902.
 1903 Display ad for The Hamburger Store. *Los Angeles Times*, July 12, 1903.
 1914 "Business Leases." *Los Angeles Times*, June 14, 1914.
 1951 Display ad for Mayfair Markets. *Los Angeles Times*, June 1, 1951.
 1952a Display ad for Thrifty Cut Rate Drug Stores. *Los Angeles Times*, November 16, 1952.
 1952b Display ad for Thrifty Cut Rate Drug Stores. *Los Angeles Times*, June 29, 1952.
 1953 Display ad for Thrifty Cut Rate Drug Stores. *Los Angeles Times*. October 18, 1953.
 1962a Display ad for Food Giant. *Los Angeles Times*, October 25, 1962.
 1962b Display ad for Food Giant. *Los Angeles Times*, November 15, 1962.
 1962c Display ad for Food Giant. *Los Angeles Times*, August 30, 1962.

National Park Service

- 1997 How to Apply the National Register Criteria for Evaluation. National Register Bulletin No. 15.

Petkewich, Rachel

- 2006 "Marshmallow." *Chemical & Engineering News* Vol. 84(16): 41.

Rivenburg, Roy

- 1995 "A Puff Piece." *Los Angeles Times*, March 3, 1995.

Sanborn Fire Insurance Maps

- 1906-1950 Los Angeles Vol. 4 Sheet 487
 1906-1951 Los Angeles Vol. 6 Sheet 699g
 1906-1955 Los Angeles Vol. 5A

References

United States Census

1930 Fifteenth Census of the United States, Venice Township, Los Angeles, California.

United States Patent Office

1928 Official Gazette of the United States Patent Office, vol. 366.

1958 Official Gazette of the United States Patent Office, Ser. No. 251, 613.

APPENDICES

APPENDIX A
Building Research Records

State California Incorporated place Los Angeles Ward of city Venice Township Prec-2

DEPARTMENT OF COMMERCE-BUREAU OF THE CENSUS FIFTEENTH CENSUS OF THE UNITED STATES: 1930 POPULATION SCHEDULE

Enumeration District No. 191536 Sheet No. 10 B Supervisor's District No. 16 Enumerated by me on April 10, 1930, Edward Dealy Bergan, Enumerator.

Table with columns: PLACE OF ABODE, NAME, RELATION, HOME DATA, PERSONAL DESCRIPTION, EDUCATION, PLACE OF BIRTH, MOTHER TONGUE OR NATIVE LANGUAGE OF FOREIGN BORN, CITIZENSHIP, ETC., OCCUPATION AND INDUSTRY, EMPLOYMENT, VETERANS.

ABBREVIATIONS TO BE USED IN COLUMNS INDICATED: Col. 5-Indicate the home-maker in each family by the letter 'H'...

ENTRIES ARE REQUIRED IN THE SEVERAL COLUMNS AS FOLLOWS:

Col. 6, 11, 12, 13, 14, 15, 16, 17, 18, and 25-For all persons...

"McEVERLAST" Protective Coatings

For Preserving All Metals, Wood and Concrete

Phone TRinity 3196

McEVERLAST, Inc. 1110 Board of Trade Bldg.

DEAL

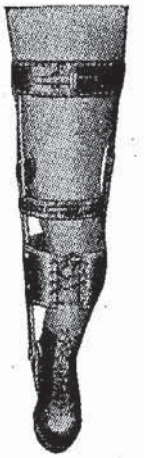
Merrill H real est 8742 Santa Monica blvd
h7964 Fountain av
Naomi tchr City Sch r622 S Serrano
Nonie (wid Francis) r1262 W 24th
Norma r622 S Serrano av
Olive (wid C A) h445 E 48th
Orval T (Anna E) plstr contr h629 N Av 53
Park D (Cath) police h6624 Bonsallo av
Russell (Clara) electn h3115 Dalton av
Ruth E sten r2107 W 81st
Saml C (Frances) tire wkr h504 E 46th
Thos (Peggy) r802 S San Pedro
W E chauf Evening Herald
W T gatemn FBOSstudios r115 S Olive
Walter E dispr Motor Transit Co r2850 12th
Wm cementwkr r3420 Whiteside av
De Alba Joaquin bus boy r721 1/2 W 41st dr
Deale Jas lab r918 E 12th
Dealy Anna M Mrs r3260 Connecticut
De Almer M r507 W 5th
De Alva Velia C tchr City Sch r809 N Bonnie
Brae pl
de Alvarez Claudina G Mrs socialwkr r2623
Mounmouth av
de Luisa Y (wid G) h2231 W 25th
de Alvarez Rosenda (wid F P) r1284 Browning
blvd
Carmen E Mrs h3318 Winter
Dealy Christine A Mrs smstrs r205 N Av 66
J Earl supt Mox Inc h1702 West blvd
Walter (Margt) molder h713 Camulos
DEAM. See also Deem and Dehm
R L h3647 7th av
Omar R (Nelle) auto mech h644 E 75th
Deamer Louis E (Lillian E) chauf h5908 Meridian
Ruth slsldr r4706 Arlington av
Wm H whsemn r5622 Monte Vista
DEAN. See also Deane and Deen
A H with Cal Sls & Dev Co
A Z (Florence) real est 406 S Main R 104
r9323 Grape
Adaline clk r110 S Nmdie av
Adeline r573 S Boyle av
Agnes Mrs r2308 W 11th
Albt H (Minerva) clk h2410 Hillcrest dr
Albt R (Julia) restr 511 W 8th h361 W 77th
Alf C (Estelle) barber 4036 S Figra h6205
same
Alf C jr (Viola) batteries 2812 W 10th
h1639 S Catalina
Alice (wid W H) h410 W 60th
Alice G Mrs sten State Inheritance Tax Dept
r Venice
Allen news agt r234 W 88th
Almeda M (wid S G) h403 S Union av
Almon W (Ethel) slsmgr h1658 S Highland av
Alta nurse r2732 Darwin av
Althea L h311 E 107th
Anna Mrs dom h1434 1/2 E 57th
Arvel W v-pres Ex-Cel-Ois Products Co r3044
E 6th
R B lmbtr h928 Grande Vista dr
Belle h328 1/2 S Bonnie Brae
Benj H (Pearl) mtrmn h645 Isabel
Chas (R E) and J M) 2d hd autos 4254 S
Vmont av
C A driver Yellow Cab Co
Carl (May) tile setter h538 1/2 W 55th
Carl C (Vay) patrolmn h933 1/2 N La Jolla av
Carol attndt John d'Autremont r5353 4th av
Carolyn r159 S Kingsley dr
Chas brkmm r3667 Whittier blvd
Chas (Maude) cameramn h1006 W 10th
Chas B car bldr SP
Chas C (Muriel) h409 E 98th
Chas C (Elsie) mach h1202 E 69th
Chas F (Elsie) ins agt h1311 W Sta Bar av
Chas M (Dorothy) h1496 Holbrook
Chas M (Armelee) firemn h282 E 45th
Chas R (Bertha) ins h1141 1/2 5th av
Chas S exp and drayage rear 3836 S Vmont
av r812 W 119th
Chas W chiropractor 427 W 5th R 604 r
Glendale
Chris E chauf r1143 E Adams
Clara A tchr City Sch h1636 W 52d
Clark M (Mildred) (Associated Sign Service)
r2021 N Hobart blvd
Claudia J phone opr r1433 Mt Pleasant
Clyde firemn LAFD r3857 Bethel pl
Clyde lab r1417 Crown Hill
Clyde L (June) slsmn h449 S Johnston
Curtess A barber r2350 Portland
Cynthia E slsldr Victor Girard r Glendale
Darrel h763 Ottawa
David (Adda) plmbtr h2714 Lanfranco
David M r2946 Bank
David W (Jennie) bldg contr h1800 W 25th
Dixie I musician r992 S Kenmore av
Donald slsmn Marshall Field & Co r No
Hollywood
Donald T (Mildred) bldg contr 1327 W 60th
Dora beauty parlor 607 S Hill R 925 r3120
9th av
Dorothy slsldr r3953 Flower dr
Dorothy D sten r884 W 47th
Earl (Hattie) auto ins h1748 Granville av
Early h1938 Argyle av
Edw radio opr r120 1/2 W 9th
Edw L restrwkr r815 W Pico
Edw O blmkr SP
Eliz Mrs baker r1257 W 48th
Eliz S tchr r4837 Maywood av
Elli M (wid Alex) r1466 Holbrook
Elmer E with WS&FCo r107 S Westlake av
Elsie clk r3823 Edenhurst av
Emily h1156 Fedora
Ervin S orderly LA Genl Hosp r123 S Work-
man
Esther C Mrs drsmkr r860 1/2 N Virgil av
Ethel smstrs r5330 Chesley av
Ethel J Mrs sten r743 Beacon av
Ethel M Mrs r1553 Ewing
Eug driver Calif Towel Supply
Eunice r1333 Wright
F Lincoln (Elinor) sec Minerals & Metals
Corp h446 N Sweetzer av
Faxon M (Margt) photog h6265 De Longpre

DEAN

Florence nurse h1632 1/2 Pleasant av
Florence Mrs r1553 Ewing
Florence A (wid J P) h730 W 84th
Forest restr 1238 W 7th r748 W Pico
Foster S (Juana) slsmn h203 1/2 N Av 50
Frances r1295 Cedaredge av
Frances slsldr h3953 Flower dr
Frances sec W G Loomis h5272 Hwood blvd
Frances H Mrs (Alaska Nugget Apts) h262
N Flower
Francis r2863 Verdun av
Francis clk Myer Siegel & Co
Francis P S teller Bank of Italy r4268 Rose-
wood
Frank r549 Ceres av
Frank h763 Hyperion av
Frank (Kath) h1230 E 53d
Frank auto mech r8950 Zamora
Frank (Jessie) clk h4268 Rosewood av
Frank A jr clk r763 Hyperion
Frank C (Estella) confr 5029 S Figra r522
W 51st
Frank H (Martha) furn rms 262 N Flower
Frank L (Daisy) stereo h1295 Cedaredge av
Frank T (Dean & Sommer) h7959 Norton av
Frank W (Alba) pres West Coast Forwarding
Co h914 Burnside av
Franklin jr clk r159 S Kingsley dr
Franklin A lab City Eng h159 E 109th
Fred h2508 S Cimarron
Fred L police LAPD r Hawthorn
Fred M tile 911 N Sycamore av r Beverly
Hills
DEAN FURNITURE CO (L M Dean) Complete
Home Furnishings, Rugs, Carpets, Stoves,
Ranges, 3304-08 W Washington, Phone Em-
pire 1257
Geo (Cath) br mgr J D Halstead Lmbr Co
r2003 Berkeley av
Geo D (Mary) mfrs rep 724 S Flower h1347
W Florence av
Geo R electn r512 Laveta ter
Geo S (Jean) asst chf clk Co Tax Collr h4837
Maywood av
Geo S solr r1318 Maryland av
Geo W (Edna M) bldg contr 1610 W Adams
Geo W (Grace) firemn LAFD h439 W 84th
pl
Glady sten r734 E 54th
Grace bookbndr r600 W 41st dr
Grace A bkpr Jas Doumakes r715 E Jeff blvd
H cutter Barker Bros r2337 Dobinson
H Clay sec Gates-Burns Paper Products Corp
r Beverly Hills
H Osborn slsmn Gordon Warren r801 N
Orange Grove av
H P slsmn Wamslett System Corp r1920 Argyle
Harold E (Flora) and FS Inco h1232 Irolo
Harry G (Eva C) mgr Bible Institute h1809
Oak
Harriett mlhr h3953 Flower dr
Harriette r666 W 36th
Harriette (wid J K) mgr Ryan Arms Apts
h3066 W 7th
Harry (Eliz) cond h168 1/2 E 67th
Harry (Edith) purch agt Wm E Bush h1207
Lowell av
Harry slsmn Jos Jaeger Co r1116 E 100th
Harry I (Verda) slsmn h613 W 83d
Harry J (Millie) pntr h1867 E 18th
Hattie B M Mrs music tchr h324 N Kingsley
Hazel actor h338 N Nmdie av
Hazel waiter r358 E 102d
Helen r688 W 35th
Helen actor r933 1/2 N La Jolla av
Helen phone opr Carthay Circle Theatre r
Culver City
Helen slsldr r1120 E 74th
Helen tchr h2709 W Pico
Helen C social wkr r559 S Ardmore av
Helen M buyer CDGCo h328 1/2 S Bonnie
Brae
Hendrich h2727 Wabash av
Henry h122 E 105th
Henry wtkmkr 707 S Bway R 506 r2725
Wabash av
Henry M (Ada P) chf clk Hotel Clark h414
W 76th
Henry R chauf r246 W 84th
Hobart porter r745 E 28th
Homer h2843 Hyans
Howard h1534 N St Andrews pl
Howard (Charity) inv h1522 N Mariposa av
Hugh C (Helen) slsmn h605 S Griffin av
Ida waiter r2753 1/2 Newell
Ida L bkpr W A Muller Co r611 S Hobart
blvd
Irene h3910 Michigan av
Irene clk r4015 Michrose av
Isis clk r1052 1-5 S Ardmore av
J Morris (Mary) (Dean Bros) h1615 E 81st
J W (Susie J) clk r232 W 42d pl
Jas bellmn r1254 W 6th
Jas A (Leonora) eng h1720 W 68th
Jas C (Agnes) eng h734 E 54th
Jas E servicecmn H L Crockett r517 S Union
Jas H h2841 W 8th
Jas (Gladys) oil well driller h642 W 73d
Jas L (Anna) carp h1052 Fedora
Jas M woodwkr r4041 Floral dr
Jas R (Pauline) phys 1501 S Figra and asst
surgeon Receiving Hosp h4842 Elmwood
Jas W slsmn W E Huyler r2308 W 11th
Jean h1249 N Citrus av
Jessie (Grace) cond h427 E 52d
Jessie E social wkr Co Charities r4912 Mara-
thon
Jessie H slsldr r4268 Rosewood av
John (Marie) (Hotel Ruth) h719 E 5th
John chauf h1225 1/2 N McCadden pl
John lndy wkr Hosp of Good Samaritan
John (June) slsmn r409 S Commonwealth av
John C (Mary) carp h3649 6th av
John F chauf r836 N Lafayette Pk pl
John G (Eliz) h1257 W 48th
John R (Florence) cond h340 W 75th
Jos A (Jessie) undtkr h4103 Brighton av
Jos V int decorator r6723 Makee av

DEAN

Josephine clk r1225 1/2 N McCadden pl
Julia r2021 N Hobart blvd
Julia A dom r1667 Staunton av
Lawrence clk r2863 Verdun av
Lena (wid J M) h1336 Albany
Lena M Mrs r612 N Gage
Leslie C slsmn FGSD&MillCo h324 N Ven-
dome
Lillian Mrs h1241 N Berendo
Lorine M (Dean Furn Co) r Alhambra
Louis A (Hattie) (Vinton & Dean) h110 E
29th
Lucille r2508 Cimarron
Lucretia J apts 2910 W 8th
Lucy (wid Frank) h992 S Kenmore av
Lula (wid S) h2863 Verdun av
Luther H estimator F D Reed Plmbg Co r
Glendale
Lydia E (wid D F) h6078 Ruby pl
Lynn E (Elsie) driver h6707 3d av
M Jan r1616 1/2 E Jeff blvd
M Frances R tchr City Sch r1511 Brooklyn av
Margt (wid J M) h2645 Roseview av
Margt A (wid J C) r1809 Oak
Margt H (wid C A) r7266 Sunset blvd
Margt J bkpr Posell-Cohn Garment Co r1028
Myra av
Margt V B Mrs h5120 1/2 Hwood blvd
Marian S r1037 N Laurel av
Marie office mgr Metropolitan Coml Service
r660 Cochran av
Marie music tchr r324 N Kingsley dr
Marie Mrs waiter r806 1/2 S New Hampshire av
Marshall H (Barbara) h1543 W 11th
Martha women's clo 6667 1/2 Hwood blvd
h1805 Wilcox av
Martha B tchr UCLA h1816 N Berendo
Marvin (Lillian) cook r820 San Julian
Marvin (Ida M) prsmn h2753 1/2 Newell
Mary h600 W 41st dr
Mary Mrs h1929 Whitley av
Mary L (wid Geo) r1010 E 46th
Mary M Mrs furn rms 608 E 5th
Maud Mrs slsldr r1006 W 10th
Maude M L tchr City Sch r833 N Av 63
Mayme M cafeteria wkr r619 1/2 S Olive
Melba A depy Co Recorder r5429 1/2 Aldama
Melvin L (Stella) int decorator h3047 Har-
rington av
Mervin M (Alice) oilwkr h426 W 84th
Mildred M r1350 1/2 E 23d
Miles D (Louise) chauf h1687 Staunton av
Milton J v-pres State Cons Oil Co and sec-
treas Miley Oil Co h745 S Coronado
Milton L (Helen) millmn h1120 E 74th
Nellie h573 1/2 N Boylston
Nelson B slsmn Chase Brass & Copper Co
r Beverly Hills
Noel r836 W 36th
Olga W (Bejla) Indymn h163 S Hayworth av
Olve E beauty opr r741 S Coronado
Oliver F (Ethel) slsmn D S Bread Co h1553
Ewing
Orville (Mabel) barber 5873 S Nmdie av
Otis H h157 S Berendo
Otto W (Lola) carrier PO h248 N Belmont
Pak J h2636 S Mansfield av
Pearl Mrs lampshade mkr r645 Isabel
Philip (Margt) archt h368 N Bronson av
Priscilla actor h1861 Whitley av
R r538 Wall
R P cond UP System rBandini
R W (Caroline) chauf h515 E 15th
Rae Mrs collr h1213 N Ardmore av
Ralph (Eliz) h121 S Benton way
Ralph A (Maude) electn h449 Lewis
Ralph E (Frances) (Dean Bros) h4274 Wal-
ton av
Ralph K linemn PE r Venice
Ralph L (Frances) slsmn White Co h3971
Brighton av
Richard A (Mamie) clk h1129 S Catalina
Robt E (Alice) int decorator r6723 Makee av
Robt H (Eva) ydmn SPC h6723 Makee av
Robt S tmkpr W M Ledbetter & Co r Monte-
bello
Robt W Mrs h221 N Irving blvd
Roscoe r560 Towne av
Roslyn Mrs mgr Strathallan Apts h835 W 9th
Ross (Ruth) porter h1405 E 39th
Ross P (El Dorado) cond h2119 Ransom
Roy M chauf Fidelity Fireproof Storage Co
Royal M (Ida) plstr h2797 W Pico
Rudolph T (Anna) auto mech h1830 E 58th
pl
Ruth M clk City Attorney r962 Westgate av
Ruth M A statistician Union Oil Co r1652
Ingramham
S cook r549 Sears av
Saml r894 E 46th
Saml Mrs h241 1/2 E 60th
Saml H (Eliz) r1553 Ewing
Saml M restr wkr r228 E 2d
Sinclair (Violette) h1522 N Mariposa av
Sue M (wid A C) h2021 N Hobart blvd
T W instr Howard Motor Co of Hwood r1211
Poinsettia pl
Tammara E Mrs r1553 Ewing
Thirence (Sarah) lab h4620 Hooper av
Thos E (Dorothy) chauf h10941 S Grand av
Uberto C (Bessie) slsmn h1642 W 79th
Urban J slsmn May Co r1329 W 53d
Veronica B artist h1746 Longwood av
Virginia clk r4103 Brighton av
Walter lndywkr r423 E 7th
Walter E brkmm SP
Walter E eng Mize Guar Co r633 S Berendo
Washington auto mech r820 San Julian
Wilbert T h1307 1/2 W 60th
Wilbur H bldg contr 1031 S Bway R 339
r10051 Sharp Van Nuys
Wilbur H (Rae) registrar LA Conservatory of
Music & Arts h119 N Park View
Wm (Anna) driver h2903 Partridge av
Wm (Margt) lab h1140 1/2 E 81st
Wm A (Emma) h1821 W 22d
Wm E h1037 N Laurel av
Wm E h3316 San Marino



Joseph C. Linneman
Manufacturer
of
ARTIFICIAL LIMBS AND BRACES ARCH SUPPORTS TRUSSES EXTENSION SHOES ORTHOPEDIC APPLIANCES

Repairing of
All Kinds

705 1/2
W. 8th St.

PHONE
Tucker
4408

Bond & Goodwin & Tucker INC.

Investment BONDS

Commercial
Paper
Acceptances
Members
Los Angeles
Stock
Exchange

458
SOUTH
SPRING
STREET

Telephone
Trinity 6041

THE GIFT SHOP OF LOS ANGELES

Main Store
Biltmore Hotel

MILNOR Inc.

17

BRANCH
LOCATIONS

EUROPEAN AND ORIENTAL IMPORTATIONS

IMPORTANT NOTICE!

Because of the fact that during the time it was being compiled and printed many of those persons whose names appear herein have passed away. Men die at the wrong time and consequently are unable to accomplish their plans. For valuable information concerning the perpetuation of your income, communicate with your home company.

GREAT REPUBLIC LIFE INSURANCE COMPANY

GREAT REPUBLIC LIFE BUILDING

756 S. SPRING STREET

PHONE TRINITY 4031

DOBBS
HATSHICKEY-
FREEMAN
CLOTHESMULLEN
and
BLUETTIn Los Angeles
In Beverly
Hills
In Hollywood
In PasadenaRio Grande
Oil CompanyRIO
GRANDE
Gasoline

Colleges—Business and Commercial—Contd
SAWYER SCHOOL OF BUSINESS, 805 S Flower, Tel Trinity 3876 (See left side lines and page 289)

SOUTHWESTERN UNIVERSITY, 1121 S Hill, Tel Westmore 3078 (See page 269)

***Colleges—Junior**

CUMNOCK SCHOOL, 5353 W 3d, Tels Whitney 7311 and 3427 (See page 271)

***Colleges and Schools**

BEVERLY SCHOOL FOR BOYS, Boarding and Day School, Non-Military and Non-Sectarian, 368 S Virgil Av, Tel Dunkirk 1485 (See page 270)

CALIFORNIA COMMERCIAL COLLEGE, 528 Metropolitan Bldg, 315 W 5th, Tel Vandike 3856 (See left bottom lines and pages 179 and 270)

CHOUINARD SCHOOL OF ART INC, Until Jan 1, 2606 W 8th, After Jan 1, 741 S Grand View Tel Dunkirk 4798 (See page 270)

CUMNOCK SCHOOL, 5353 W 3d, Tels Whitney 7311 and 3427 (See page 271)

HARVARD SCHOOL (Military), 1601 S Western av, Tel Empire 0812 (See page 271)

ONEONTA MILITARY ACADEMY, 1970 Fremont av SOUTH PASADENA, Tel Eliot 2630 (See page 272)

PAGE MILITARY ACADEMY, 1201 S Cochran av, bet Wilshire Blvd and W Pico, Tel Whitney 1128 (See page 272)

SAWYER SCHOOL OF BUSINESS, 805 S Flower, Tel Trinity 3876 (See left side lines and page 289)

SOUTHWESTERN UNIVERSITY, 1121 S Hill, Tel Westmore 3078 (See page 269)

UNIVERSITY OF SOUTHERN CALIFORNIA, 3551 University av, Tel Beacon 6500

WOODBURY COLLEGE, Woodbury Bldg, 727 S Figueroa, Tel Trinity 8491

***Color Lithographers**

UNION LITHOGRAPH CO INC THE, 2030-2042 E 7th, Tel Trinity 8351 (See page 223)

Color Manufacturers

Color Control Co 7027 Romaine
Radke J H 2044 Venice Blvd

***Color Printers**

UNION LITHOGRAPH CO INC THE, 2030-2042 E 7th, Tel Trinity 8351 (See page 223)

***Colors—Dry—Importers and Jobbers**

BUTCHER L H CO, 2034 Bay, Tel Trinity 8361

***Columbariums**

HOLLYWOOD CREMATORY AND COLUMBARIUM, Located in Hollywood Cemetery, 6000 Santa Monica Blvd, Tels Holly 8455 and Hempstead 3830 (See back cover right top lines and page 185)

INGLEWOOD PARK CEMETERY ASSOCIATION, Offices 428 to 431 Van Nuys Bldg, 210 W 7th, Tel Trinity 4487, Selling Dept Tel Tucker 6484, Cemetery Inglewood Park, Redondo Beach Blvd, Hawthorne Car, Tel Pleasant 3144 (See page 188)

***Combustion Instruments**

HAYS CORPORATION THE, Jno W Crawford Sales Rep, 1855 Industrial, Tel Mutual 5507 (See page 182)

***Commercial Artists**

MEGGS CHAS, 308 Baine Studio Bldg, 6605 Hollywood Blvd, Tel Hempstead 6982

***Commercial Banks**

UNION BANK & TRUST CO OF LOS ANGELES, Union Bank Bldg, 8th and Hill, Tel Trinity 5411 (See page 128)

***Commercial Collections**

AKAHORI COLLECTION AGENCY, 101 1/2 Weller, Tel Tucker 8684, PO Box 713 (See page 172)

BITTLESTON COLLECTION AGENCY INC, 1211 Citizens National Bank Bldg, 453 S Spring, Tel Trinity 6861 (See ribbon marker and page 170)

HOLMES W H & CO, 206 Wilcox Bldg, 206 S Spring, Tel Vandike 5784

MERCHANTS NATIONAL PROTECTIVE ASSN, 412 California Bldg, 205 S Bway, Tel Vandike 1964 (See page 172)

RELIABLE COLLECTION AGENCY INC, 711 Lincoln Bldg, 742 S Hill, Tel Trinity 0606 (See left top lines and page 171)

TAYLOR WM E (Derthick, Cusack & Ganahl), 3d fl Merritt Bldg, 307 W 8th, Tel Trinity 7917

WILSHIRE CREDIT EXCHANGE 5212 Wilshire Blvd, Tel Oregon 5607 (See page 172)

***Commercial Colleges**

CALIFORNIA COMMERCIAL COLLEGE, 528 Metropolitan Bldg, 315 W 5th, Tel Vandike 3856 (See left bottom lines and pages 179 and 270)

SAWYER SCHOOL OF BUSINESS, 805 S Flower, Tel Trinity 3876 (See left side lines and page 289)

SOUTHWESTERN UNIVERSITY, 1121 S Hill, Tel Westmore 3078 (See page 269)

UNIVERSITY OF SOUTHERN CALIFORNIA (University College), Transportation Bldg, 7th and Los Angeles, Tel Trinity 1701

***Commercial Employment Service**

CALIFORNIA COMMERCIAL SERVICE BUREAU, 528 Metropolitan Bldg, 315 W 5th, Tel Vandike 3856 (See left bottom lines and pages 179 and 270)

***Commercial Investigations**

ARMSTRONG J B DETECTIVE SERVICE, 209 Wilcox Bldg, 206 S Spring, Tels Tucker 1810 and 1850, Night Tel Albany 5432 (See left side lines and page 177)

LLOYD'S DETECTIVE SERVICE, 618 Grant Bldg, 355 S Broadway, Tel Vandike 7448, Night Tel York 7359 (See Classified tab)

MOZLEY DETECTIVES, Palmer Bldg 6362 Hollywood Blvd, Tel Granite 5303 (See page 177)

***Commercial Paper**

MERRILL, LYNCH & CO, 809 Van Nuys Bldg, 210 W 7th, Tel Trinity 0511 (See page 145)

NATIONAL BANK OF COMMERCE, 437-439 S Hill, Tel Faber 3101 (See page 122)

***Commercial Paper and Street Improvement Bonds**

HOPKINS ROBERT E & CO, 452 Subway Terminal Bldg, 417 S Hill, Tels Mutual 6282 and 6283

***Commercial Photographers**

AMERICAN STUDIOS, 4360 S Hoover, Tel Humbolt 6331 (See page 173)

***Commercial Warehouses**

PACIFIC COAST TERMINAL WAREHOUSE CO, 820 McGarry (at 9th and Alameda), Tel Trinity 9701

Communicating Systems

Berndes A E 5510 Monte Vista
WEAVER PHONE EQUIPMENT CO, 228 S Los Angeles, Tel Mutual 0466 (See page 278)

Compensation Insurance—*Medical Service**

AMERICAN HOSPITAL ASSOCIATION INC, Suite 602-607 Western Pacific Bldg, 1031 S Broadway; Hospital-Medical Protection Certificate, Tel Westmore 5284 (See left bottom lines and page 201)

***Composition Floors**

DIATO FLOORING CO, 1135 N Mansfield av, Tel Holly 4111

***Composition—Linotype, Intertype and Monotype**

TYPOGRAPHIC SERVICE CO, 417 E Pico, Ground Floor, Tel Westmore 5028 (See page 284)

***Composition Roofing**

EL REY PRODUCTS CO, 1633 N San Pablo, Tel Angelus 1101 (See bottom edge, page 266 and opp page 837)

GANAHL O LUMBER CO, 5900 Avalon Blvd, Tel Axridge 9055, Branches 830 E 1st and 1912 S Olive (See right bottom lines and page 226)

LOS ANGELES PAPER MFG CO, 1633 N San Pablo, Tel Angelus 1101 (See bottom edge, page 266 and opp page 837)

PARAFFINE COMPANIES THE, INC, 4500 Santa Fe av, Tel Jefferson 4141 (See page 267)

***Composition and Flexco Ornaments and Gilding**

WEAVER J P & CO, 1444 S San Pedro, Tel Westmore 5287

***Compressors—Air and Gas**

COOPER-BESSEMER CORP, 630-636 E 61th, Tel Axridge 0179

***Comptometer Schools**

MacKAY BUSINESS COLLEGE, 612 S Figueroa, Tel Trinity 0417

***Computing Machines**

MARCHANT CALCULATING MACHINE CO, 380 I W Hellman Bldg, 124 W 4th, Tel Tucker 5978 (See right side lines and page 163)

***Concrete—Mixed**

MATERIAL DEALERS DISTRIBUTING CO, 1000 N La Brea av, Tel Gladstone 2108

***Concrete Admixture**

FLOATSTONE PRODUCTS CO, 423 Wall, Tel Tucker 4303

Concrete Block Manufacturers

McDonald J A 1432 Newton

***Concrete Burial Vaults**

ENDERLE FRANK X, 1715 San Fernando rd, Tel Capitol 1550

***Concrete Cutting**

FUNK & BUNKER, 421 E 15th, Tel Westmore 6183

***Concrete Form Holders**

AMERICAN "FORM-HOLD" CORPORATION, 801-4 Universal Bldg, 155 W Washington, cor Hill, Tel Westmore 9002

***Concrete Pipe**

AMERICAN CONCRETE PIPE CO, 615 Broadway Arcade Bldg, 542 S Broadway, Tel Trinity 1026

***Concrete Pipe Manufacturers**

UNITED CONCRETE PIPE CO INC, 1347 W 208th, PO Box 1 Sta H, Tels York 9196 and 9197

***Condensers**

SOUTHWESTERN ENGINEERING CORPORATION, 1221 Hollingsworth Bldg, 606 S Hill Tel Trinity 3404

Condiment Manufacturers

(See also Pickle Mfrs; also Preserve Mfrs.)
Elsert F A 937 Birch
Gentry C B Chill Powder Co 735 Decatur
Golden West Products Co 2465 Hunter
Heinz H J Corp 712 Santa Fe av
Hellmann Products Co Inc 440 Seaton
Mandarin Sauce Co Inc 750 Ceres av
Morehouse L H 1138 San Fernando rd
Murillo Rosendo 1510 1/2 Mozart
Nishi Isokichi 519 E 1st
Randall T A 2536 San Fernando rd
Willits Green & Marston 823 Traction av

Confectioners—Manufacturing

Alaska Sucker Sales & Equipment Co 124 W 4th R 308
Barr & Blair Inc 718 S Grand av
Behmouran Eliezer 5219 S Hoover
BISHOP & COMPANY, 1366 E 7th, Tel Trinity 4141
Braucht J A 5610 S Westn av
Brooks Christine Mrs 2500 S Vmont av
Brown G J O 2806 W 9th
Brown Jerome 10310 S Main
Bullis D G 4054 S Bway
Campbell Thos 5015 Pico Blvd
Christopher Candy Co 3680 Avalon Blvd
Clover Leaf Products Co 1848 E Vernon av
Colby & McDermott 942 W 12th
Connor H J 1726 W Sta Bar av
Dumaks Jas 711 E Jeff Blvd
Famo Products Co 1601 Industrial
Felix Chas 2520 S Catalina av
General Food Products Co, 1925 E Vernon av
Goldberg Saml 631 E 62d
Hangor Paul 2016 Glendale Blvd
Hasty-Tasty Corp 316 Omar
Hawkins A B 407 E Pico R 408
Hayhoe S O 1252 E 8th
Helm & Marcursion 5769 Huntington dr N
Hewitt W A 2705 W Pico
Hoffman E A Candy Co 634 S San Pedro
Jaffe Rubin 1320 Newton
Lake W J 910 N Westn av
Lyons J F 5927 S Hoover
Mack F W 1201 W 103d
Mathews Candy Co 1226 Factory pl
Matsuhara H 620 E 1st
Matsunaga T 708 E 1st
Maurer Chas 2862 W 10th
Merriam Bros 137 N Utah
Miller W A 543 Gladys av
Nowlin H L 327 W Pico
O K Corn Crisp Co 1399 Firesstone Blvd
Palbrough W T 4828 S Westn av
Reas Inc 254 S Los Angeles
Reordan Margt D 807 N Spring
Riley's Sandy Shop 6611 S San Pedro
Rose Garden Marshmallow Co 505 W 62d
Sally Candy Shops Inc 634 S Westn R 10
Sheetz Albert Mission Candy Co 5755 Santa Monica Blvd
Special Wholesale Candy Co 1786 N Main
Stockey J O 142 N Flower
Straser Candy Co Inc 1320 S San Pedro
Sunkist Candy Co 425 E 58th
Tallaqua Felipe 4609 Bklyn av
Triangle Candy Co 1309 Santa Fe av
Varro V G jr 1439 E 78d
Vino Bar Mfg & Distributing Co 3420 S Main
Warfield Candy Co 802 W 11th
Watkins W O 766 Merchant
WEISS S O CANDY CO, 110 E Jefferson Blvd, Tel Humbolt 0902
Wolgamoed Leo 659 W Jeff Blvd
Woodrow & Haggart Co 2115 S Main

***Confectioners' Boxes**

LOS ANGELES PAPER BOX FACTORY, 3324 S Main, Tel Humbolt 0990

Carlin G. Smith

(INCORPORATED)

REALTOR

Developers of Lands—Subdivisions—City Lots
Industrial and Business Property

201 H. W. Hellman Bldg.
354 S. Spring St.
621 Associated Realty Bldg.
6th and Olive St.

Phone TRinity 1741

Fireman's Fund Insurance Company

FIRE MARINE AUTOMOBILE

4th Floor Garland Bldg., 740 South Broadway Telephone Vandike 4111

DUN R G & CO. 6th Floor Grether Bldg. 730 S Los Angeles, Tel Vandike 1021

EDWARDS HARRY A. 806-808 Broadway Arcade Bldg. 542 S Broadway, Tel Mutual 3671

EQUITABLE ADJUSTING ASSN 145 S Spring R619

FLETCHEER AL. 502 Bank of Commerce Bldg 437 S Hill, Tel Trinity 4261

FLETCHER & STEEL LTD. 335 Subway Terminal Bldg 417 S Hill, Tel Michigan 3261

Freedman Collection Co 124 W 4th R661

Fry G E 315 W 9th R408

Globe Adjustment Service 411 S Main R405

GOLDMAN A S & ASSOCIATES INC. 501 Great Republic Life Bldg 756 S Spring, Tel Trinity 9985 (See left bottom lines and page 2446)

Gower W C 610 S Bway R1005

GRINDLE & COMPANY LTD. 631 Subway Terminal Bldg 417 S Hill, Tels Mutual 8752 and Michigan 6495

H D K Co 406 S Main R608

Harris M H 257 S Spring R227

HARRIS NICK FINANCE EXCHANGE. 271 Chamber of Commerce Bldg, 1151 S Broadway, Tel Prospect 8333

Harrison J W 458 S Spring R426

Hefferson M J 5225 Wilshire Blvd R615

Heller W E & Co 756 S Bway R315

HOLLYWOOD COLLECTION SERVICE. 306 Pacific States Life Bldg, 6305 Yucca, Tel Gladstone 6979

Hollywood Professional Trustees 6305 Yucca R 306

Hunefelt Wesley 206 S Spring R352

Hyde O L 426 S Spring R303

INTERNATIONAL PROTECTIVE ASSOCIATION (Louis Baar) 504-506 Paramount Bldg, 323 W 6th, Tel Mutual 6481

Jaffe S L 208 S Spring R530

JOHNSON WILBUR INC. 750 Subway Terminal Bldg, 417 S Hill, Tel Michigan 1178

LANSDALE A. 410 American Bank Bldg, 129 W 2d, Tel Mutual 1412

Law A & O Co 206 S Spring R511

Libby F A 458 S Spring R1111

LONG FRED W INC. 605, 606 Garland Bldg, 740 S Broadway, Tel Vandike 5036

LOS ANGELES CREDIT MEN'S ASSOCIATION COLLECTION DIVISION. 804-805 Board of Trade Bldg 111 W 7th; Tel Vandike 8148

Los Angeles Investigating Bureau 524 S Spring R501

Los Angeles Merchants Bureau 524 S Spring R 501

Los Angeles Retail Board of Trade Collection Agency 111 W 7th R1124

Los Angeles Service Bureau 742 S Hill R518

Lynch E A 412 W 6th R210

MacCormack W H 1070 Vine

Manufacturing Confectioners Bureau 417 S Hill R650

McDonald Adjustment Service 108 W 6th R933

McDougal Jas 427 W 5th R503

McGEE T D. 239 H W Hellman Bldg, 354 S Spring, Tel Michigan 4418

Medical Credit Bureau 2221 S Hoover R207

Medical Men's Service Bureau 2033 W 7th

Menefee A S 458 S Spring R426

Merchants General Crafts Ltd 742 S Hill R1217

Merchants Service Bureau 2221 W 15th

Merkel E W 705 S Alvarado

Metropolitan Credit Bureau 1855 Industrial

Metzler R C 727 W 7th R600

Miller H S 208 W 8th R700

NATIONAL PROTECTIVE AGENCY THE. 504 Jewelers Bldg 747 S Hill, Tel Trinity 1506

National Retail Board of Trade Inc 1151 S Bway R414

Pacific Southwest Creditors Assn 1151 S Bway R658

PALMER COLLECTION CO. Successors to Austin Collection Co 202 Central Bldg, 30 N Raymond, Av, PASADENA, Tels Terrace 7136-7137

Paramount Collection Co 536 S Hill R456

Parker Business Service 4428 1/2 S Bway

Personal Service Bureau 1070 Vine

Phillips D S 124 W 4th R671

Pioneer Adjusting Co 453 S Spring R608

Pioneer Service Co Inc 321 W 3d R510

Produce Credit Co 1211 E 9th

Professional Audit Co 2008 W 7th R7

Professional Finance & Adjustment Service 307 W 8th R610

Professional Service Bureau 405 S Hill R710

PRUDENTIAL NATIONAL ADJUSTMENT CO. 919 Story Bldg, 610 S Broadway, Tel Trinity 5488, 6 Trunk Lines

Public Claims Co 323 W 6th R506

RAY FREDERICK. 132 W 1st, Tel Mutual 3488

Redpath K V 1489 W Washn Blvd R201

RELIABLE COLLECTION AGENCY INC. 710 Lincoln Bldg, 742 S Hill, Tel Trinity 0606

Retail Merchants Credit Assn of L A 706 S Hill 10th fl

Rose H O 448 S Hill R418

Rumyan Guy 6362 Hwood Blvd R406

SCHWARZ ADOLPH M INC. 440 Van Nuys Bldg, 210 W 7th, Tel Michigan 3654

Southwestern Creditors Assn 541 S Spring R415

Spier C S & Associates 403 W 8th R420

Stamps WNC 112 W 9th R426

Standard Service Agency 740 S Spring R705

Surety Collection Bureau 210 W 7th R906

Surety Finance & Adjustment Co 1031 S Bway R832

Taylor W E 403 W 8th R300

Traders Clearing House Ltd 1220 Maple av R1104

United Finance Co 448 S Hill R1305

United Reporting Co 1031 S Bway R338

UNITED STATES CREDIT BUREAU. 504 Jewelers Bldg, 747 S Hill, Tel Trinity 1506

UNIVERSAL ADJUSTMENT & FINANCE BUREAU. 728-729 Bryson Bldg 145 S Spring Tel Mutual 4063 (See page 2447)

Van Dyne R H 610 S Bway R312

Wagner F G 5509 Santa Monica Blvd

Walker's Collection Service Co 215 W 6th R 1003

Weiser W J 408 S Spring R611

West Coast Bonded Adjusters Ltd 650 S Spring R625

WESTERN BOARD OF ADJUSTERS. 725 C C Chapman Bldg, 756 S Broadway, Tel Mutual 1359

Western Credit Protection Assn 311 S Spring R526

Wholesale Credit Adjustment Bureau 417 S Hill R623

Willett & Frieseke 771 Vine

***Colleges—Business and Commercial**

SOUTHWESTERN UNIVERSITY. 1121 S Hill, Tel Prospect 3078 (See left side lines and page 2508)

***Colleges—Junior**

CUMNOCK SCHOOLS. 5353 W 3d, Tel Oregon 1138 (See page 2509)

***Colleges and Schools**

CHOUNARD SCHOOL OF ART INC. 741 S Grand View, Tel Dunkirk 8152 (See page 2509)

CUMNOCK SCHOOLS. 5353 W 3d, Tel Oregon 1138 (See page 2509)

HOLLYWOOD SCHOOL FOR GIRLS. 1749 N La Brea Av, Tel Granite 4801 (See page 2510)

ONEONTA MILITARY ACADEMY (Accredited) 1970 Fremont Av, SOUTH PASADENA, Tel Sycamore 2630 (See page 2510)

PAGE MILITARY ACADEMY. 1201 S Cochran Av, bet Wilshire Blvd and W Pico, Tel Whitney 1128 (See page 2510)

RADIO INSTITUTE OF CALIFORNIA. 1117 Venice Blvd, Tel Drexel 6753 (See page 2511)

SOUTHWESTERN UNIVERSITY. 1121 S Hill Tel Prospect 3078 (See left side lines and page 2508)

WOODBURY COLLEGE. Woodbury Bldg, 727 S Figueroa, Tel Trinity 8491

Color Manufacturers

Chemical Color Process Co 918 N Westn av

Color Control Co 7027 Romaine

***Color Plate Engravers**

ARTS ENGRAVING CO INC. 308 E 9th R300, Tel Tucker 4881 (See right top lines and page 2452)

***Columbariums**

HOLLYWOOD CREMATORY & COLUMBARIUM Located in Hollywood Cemetery, 6000 Santa Monica Blvd, Tels Hollywood 8455 and Hemstead 3830 (See back cover, right top lines and page 2439)

INGLEWOOD PARK CEMETERY ASSOCIATION. Offices 428 to 431 Van Nuys Bldg, 210 W 7th, Tel Michigan 3604, Cemetery Inglewood Park Redondo Beach Blvd Hawthorn Car, Tel Pleasant 3144 (See right bottom lines and page 2440)

***Commercial Banks**

UNION BANK & TRUST CO OF LOS ANGELES Union Bank Bldg, 8th and Hill, Tel Trinity 5411 (See page 2414)

***Commercial Collections**

AMERICAN ADJUSTMENT & INSURANCE AGENCY. 226 Rives-Strong Bldg, 112 W 9th, Tel Tucker 4645 (See right top lines and page 2446)

BITTLESTON COLLECTION AGENCY LTD. 1211 Citizens National Bank Bldg, 453 S Spring, Tel Trinity 6861 (See ribbon marker and page 2445)

CALIFORNIA CLAIM SERVICE LTD. D W Cohn Genl Mgr, F B Chaffey Res Mgr, 928 C C Chapman Bldg, 756 S Broadway, Tel Tucker 7413 (See page 2446)

GOLDMAN A S & ASSOCIATES INC. 501 Great Republic Life Bldg 756 S Spring, Tel Trinity 9985 (See left bottom lines and page 2446)

RELIABLE COLLECTION AGENCY INC. 710 Lincoln Bldg, 742 S Hill, Tel Trinity 0606

UNIVERSAL ADJUSTMENT & FINANCE BUREAU 728-729 Bryson Bldg 145 S Spring, Tel Mutual 4063 (See page 2447)

***Commercial Colleges**

SOUTHWESTERN UNIVERSITY. 1121 S Hill, Tel Prospect 3078 (See left side lines and page 2508)

***Commercial Photographers**

ARTS PHOTO SERVICE INC. 308 E 9th, R300, Tel Tucker 3759 (See right top lines and page 2452)

***Commercial Warehouses**

PACIFIC COAST TERMINAL WAREHOUSE CO. 820 McGarry (at 9th and Alameda), Tel Trinity 9701

Communicating Systems

Los Angeles Telephone Supply 234 E 7th

Robards D L 228 S Los Angeles

***Compensation Insurance Medical Service**

AMERICAN HOSPITAL ASSOCIATION LTD. Suite 602-607 Western Pacific Bldg, 1031 S Broadway, Hospital-Medical Protection Certificate, Tel Prospect 5284, Always Open (See left bottom lines and page 2464)

***Composition Floors**

DIATO FLOORING CO. 1135 N Mansfield Av, Tel Hollywood 4111

***Composition Roofing**

EL REY PRODUCTS CO. 1633 N San Pablo, Tel Capitol 11-101 (See bottom edge and page 2507)

GANAHL C LUMBER CO. 5900 Avalon Blvd, Tel Axridge 9055; Branches 830 E 1st, and 1912 S Olive (See right bottom lines and page 2478)

LOS ANGELES PAPER MFG CO. 1633 N San Pablo, Tel Capitol 11-101 (See bottom edge and page 2507)

PARAFFINE COMPANIES THE INC. 4500 Santa Fe Av, Tel Jefferson 4141

***Composition and Flexco Ornaments and Gilding**

WEAVER J P & CO. 1444 S San Pedro, Tel Prospect 1832

***Compressor Service**

AIR & GAS COMPRESSOR SERVICE. 833 E 15th, Tel Prospect 8720

***Concrete—Mixed**

ASSOCIATED ROCK CO. 1000 N La Brea Av, Tels Gladstone 2108 and 2109

Concrete Block Manufacturers

Rackle H E 1890 W Slauson av

Van Landingham W C 6210 S Westn av

***Condensers**

SOUTHWESTERN ENGINEERING CORPORATION. 4800 Santa Fe Av, VERNON, Tel Jefferson 7131

Condiment Manufacturers
(See also Pickle Mfrs; also Preserve Mfrs)

Golden West Products Co 2465 Hunter

Heinz H J Corp 712 Santa Fe av

Old Chef Products Co 2312 Portland

Robertson J D 1807 E 7th

Tresie's 937 Birch

Weinrich Pickle Co 1361 Willow

Confectioners—Manufacturing

Armendariz Raymond 2546 San Fernando rd

Barsam Bros 3741 S Westn av

Beckford J C 507 W 62d

Bishop & Co 1366 E 7th

Browne Jerome 10310 S Main

Chapple Dorothy 9011 W Pico Blvd

Christopher Candy Co 3680 Avalon Blvd

Clover Leaf Products Co 1848 E Vernon av

Colley & McDermott 940 W 12th

Coleman O T 307 S Hill R218

Connor H J 1750 1/2 W Sta Bar av

Curtiss Candy Co 180 S Central av

Davis Candy Co 137 N Utah

Deems Chris 5428 W Santa Monica

Doumakes Jas 711 E Jeff Blvd

Dowell H A 804 W 11th

Edwards Nicholas 4429 S Central av

Fig-Nut Confection Co 2871 W 9th

Fraser Mary Candies 107 S Westn av

Fried Benl 2218 E 1st

Funk & Jenny 308 W 67th

Gilson E A 3804 W Pico

Glickman H I 2615 E 1st

Goldberg Saml 1399 Firestone Blvd

Hanger Paul 2016 Glendale Blvd

Hassey C E 1502 E Jeff Blvd

Haybarger H G 1303 S Oxford av

Hewitt W A 835 San Julian

Hoffman E A Candy Co 6600 Avalon Blvd

Huny Nut Candy Co 2859 W 9th

Kentling A H 916 E 7th

Lake W G 1410 W 24th and 403 W Washn Blvd

Lampman J A 1445 W Flnce av

Littlejohn H F 549 S Bway

Litzaw John 421 S Fetterly av

Lloyd Alice Mrs 1521 N Bronson av

Luce Vern 1560 Murchison

Mathews Geo W Co 1122 E 14th

McDonough L S 2522 E 4th

Miller & Schultz 543 Gladys av

Moon W A 2526 Colorado Blvd

Pyle Elmer 4436 1/2 Huntington dr S

Riley's Candy Shop 6611 S San Pedro

Rose Candy 106 W 2d

Ruben Mae A 5109 W 1st

Sally's Home Made Candy Co 1577 W Jeff Blvd

Searcy J L 9817 Avalon Blvd

See's Candy Shop Inc 519 W Washn

Sheetz Albt Mission Candy Co Ltd 5755 Santa Monica Blvd

Sunkist Candy Co 425 E 58th

Tallaga Felipe 4609 Bklyn av

US Mint & Gum Co 671 S Anderson

Washington Martha Candies 5210 Wilshire Blvd

Wassell Jos 4869 W Washn Blvd

Watkins W C 776 Merchant

WEISS S C CANDY CO. 3755-3759 Broadway Place, Tel Adams 0902

Welch's Candy Ltd 8151 Bev Blvd

Wilkinson E C 6029 S Vmont av

Yassy Albt 2066 Marengo

Attend the

GAMES

of the

Xth Olympiad

at

LOS ANGELES

July 30 TO Aug. 14 1932

PROGRAM of

135

ATTRACTIONS

Running Continuously for

16 Days & Nights

in 9 Different Stadiums and Pavilions

LOS ANGELES CALIFORNIA

THE HOSPITAL OF THE GOOD SAMARITAN

Phone MUTual 1331 Absolutely Fire Proof 1212 Shatto St.

Doumakes Alex (Doumakes' Marshmallow Co) r 4918 Angelus Vista Blvd
 " Jas (Maria) (Doumakes' Marshmallow Co) h 4918 Angelus Vista Blvd
 " John clk r4918 Angelus Vista Blvd
 Doumakes' Marshmallow Co (Jas and Alex Doumakes) 711 E Jeff Blvd
 Doumani Peter K (Lillian) h726 S Lorraine Blvd
 Douner David W (Ato) chauff r1344 Downey Rd
 Doumas Wm (Pearl) cook h3544 Beswick
 Doum Fanny (wid Jos) h4888 1/2 Lexington av
 Dounton Leslie M phys r432 S Boyle av
 Doupe Jas S W (Ella) acct Southwestern Portland Cement Co h311 S New Hampshire av
 Doupner Junice M waiter r1801 N Commonwealth h1801 N Commonwealth av
 " Margt (wid G W) restr 4711 Hwood Blvd
 Doura Anna C fur fnshr r928 S Hope
 Dourassov Serge (Bessie A) radio techn r232 W 40th pl
 " Martin A (Rose) millwkr h1432 W 79th
 Dourti Alonzo (Maria) h1734 1/2 W 48th
 " Kath clk r1734 1/2 W 48th
 Douse Fred A (Winnifred) slsmn h1836 N Av 53
 Dousett Franc L h2226 N New Hampshire av
 Doussant Paul chef Kath Parmelee
 Douzaz Eliz r443 Hartford av
 Douth Chas F h2108 Montana
 " Eliz r2108 Montana
 Douthitt Edna O asst supvr City Bd of Educ r5153 Meridian
 " Frances L tchr r5153 Meridian
 " Jasper J (Goldie R) (Scott and Douthitt) h1422 Hi Point
 " John W (Kath E) slsmn h5159 Meridian
 " Martin F (Grace) clk h134 E 106th
 " Mary F (wid John) h5153 Meridian
 " Saml clk r149 E 64th
 " Wm M (Evelyn) clk h149 E 64th
 Douthitt Ellen F (wid J P) h1637 3d av
 " Esther M r1637 3d av
 " Grace B bkpr Coml Discount Co h836 Mariposa av
 " Jas V lab City Eng r Venice
 " John M jr sury City Eng r1637 3d av
 " Zannibel tchr City Sch r1637 3d av
 " Wm whsmn r1235 D 39th
 Douthwaite Archie S (Mayme C) lather h7518 S Hobart Blvd
 " Gus (Mary) theatre mgr h105 S St Andrews pl
 " Mary T (wid Wm) r419 N Sweetzer av
 " Richd R lather r7518 S Hobart Blvd
 Douth Edwin S (Freda W) C S pract 2030 S Nmdie av
 " S S Jan City Bd of Educ r Huntington Park
 Douth Lucille C Mrs r2059 W 73d
 Douvas Gust (Margt) clk h3324 E 22d
 Douville Harry B (Mary B) clk h1101 S Union
 Douvalina Michel (Eleanor) butcher h627 1/2 Records
 Dove Alf A (Helen) stereo h3715 W 25th
 " Arth J auto repr 687 S Bonnie Brae r128 S Lake
 " Carrie G (wid W T) slsmn h8006 Norton av
 " Dorothy I indywrk r4427 E 6th
 " Edw R (Zella) formn LARcord h170 Douglas
 " Grace M Mrs r1235 W 41st pl
 " Harry h4219 W 63d
 " Marjorie Mrs r128 S Lake
 " Maymie (wid Wiley) h1632 1/2 E 49th
 " Mozelle slsmn r1214 S Hoover
 " Robt C (Rosa) sack sewer h1652 E 49th
 " Veio E clk r148 S Figra
 " Warren (Kathryn) r912 1/2 W 9th
 " Wm H (Clara H) jan City Bd of Educ h559 N Boylston
 Dovel Lisette D (wid Virgil) h1015 N Hobart Blvd
 Dover Albt L (Mabel) clk h414 S Evergreen av
 " Cecil (Cecile) chauff h788 E 38th
 " Isadora R sten Co Probation Dent r1031 S Manhattan pl
 " John G (Mabel) sta eng h1436 59th pl
 " Oil Co Ltd E G Howard pres R E Barry sec-mgr 555 S Flower R917
 " Wm B (Thelma) dir of personnel Twentieth Century Pictures Inc h1632 N Fairfax av
 Doverspike Agnes Jan City Bd of Educ r543 LaVerne av
 " Darrell (Willie) linemn h543 LaVerne av
 Dovesy Herbt (Margt) slsmn O G Wildey Co h 424 1/2 N Stanley av
 " Jas H wtchmnn h3223 N Main
 Doygard Louis clk r2219 Echo Park av
 Dovica Anthony tailor h1359 N Bronson av
 Dovid Paul J (Armida) electn r228 S Manhattan pl
 " Wm B (Marie) slsmn r228 S Manhattan pl
 Dovidio Fernando (Josephine) h2115 Mozart
 " Guido A garmt ctr r2115 Mozart
 " Jos (Albina) lab h716 E 75th
 Doris D L police h1771 N Vmont av
 " Pearl Mrs indywrk h1166 E 48th
 Dow Abner H (Flora) acct Elec Products Corp h2807 Holt av
 " Ada J (wid Fred) h1954 N Berendo
 " Alec (Eliz) carp h6095 Meridian
 " Alf W (Nellie A) brkmm h1719 51st pl
 " Alleen Mrs authorizer Bway Dent Store r3031 Castle
 " Allistair typist r313 S Rampart Blvd
 " Andw h313 S Rampart Blvd
 " Andw M (Sara) h1351 N Spaulding av
 " Bevington B (Melissa) chauff r127 S Wilton dr
 " Brenda C cash Montgomery Bros r Glendale
 " Carrie V (wid D A) h758 Seward
 " Chas r729 W 8th
 " Chas interpreter U S Immigration Serv h821 S Bixel
 " Chas A mfrs agt 430 S Bway R607 r5742 Waring av
 " Chas E r223 1/2 E Av 39
 " Chas W lawyer 3780 Wilshire Blvd R502
 " Christina Mrs r535 Oleander dr
 " Clayton C (Sallie V) electn h220 1/2 N Alta
 " Courtney L bkpr LAG&ECorp r405 Loma dr
 " Dorothy D r352 N Av 59
 " Edna J h3771 S Main
 " Edwin H r1940 W 82d
 " Eliz maid r100 S Fuller av
 " Ethel L v-prin Belvedere Jr High Sch r Glendale
DOW FRANK P CO INC, Mabel L Usher Sec-Mgr, Customs Brokers, 107 LaBarca Bldg, 234 N Main, Tel Trinity 2188
 " Geo K (Bessie) slsmn h1530 Glendale Blvd
 " Gerald G reedwkr Indstrl Work Shop for the Blind r Glendale
 " Grace E music tchr 672 S Lafayette Park pl r1734 4th av
 " Grace M stdt nurse Genl Hosp r7009 Fountain
 " Harley E (Della) clk h1548 W 52d
 " Harold R (Alleen) cik Pac Indemnity Co h3031 Castle
 " Helen E tchr City Sch r2739 Waverly dr
 " J Neil h249 E Av 33
 " Jas G (Frances) factywrk h6438 Lexington av
 " Jas R (Daisy) chauff h7963 Sta Monica Blvd
 " Jean entertainer r928 8th pl
 " Jennie T Mrs nurse r4235 3d av
 " John A (Edna) garage 1501 W Jeff Blvd h2653 S La Brea av
 " Jones & Co O P Miller mgr publishers 108 W 6th R633
 " Jos (Kath) porter h1260 E 53d
 " Julia r313 S Rampart Blvd

DOW
 " Julian N phys 727 W 7th R1228 r639 S Commonwealth av
 " June (wid Edw) r222 W 48th
 " Kate (wid C C) h1044 W 42d
 " Kathleen r1351 N Spaulding av
 " Leslie E (Vivian) firemn h223 1/2 E Av 39
 " Louis C (Patricia) garage 1676 N Westn av r1954 N Berendo
 " Louis F Co W K Hopkins mgr adv 333 W 2d R328
 " Louisa A r573 S Boyle av
 " Margt h730 Beacon av
 " Margt r947 Georgia
 " Martha A Mrs h1110 N Ogden dr
 " Mary Mrs h1051 Browning Blvd
 " Mary E opr WUTC r Glendale
 " Mary E Mrs r2113 N Highland av
 " Mary G (wid Elmer) r252 N Rosemont
 " Mattie A (wid Jos) h2604 Idell
 " Melissa R bkpr Univ Cal Extension Div r127 S Wilton dr
 " Merle A (Belle) mgr Euston Apts h1821 S Main
 " Mildred M clk r1044 W 42d
 " Minnie Mrs house mother Occidental College h4549 Alumni av
 " Myrtle S h405 Loma dr
 " Neal E lawyer 417 S Hill R504 r Culver City
 " Perle socialwkr h610 N Kenmore av
 " Peter h5735 Sta Monica Blvd
 " Ralph G (Shirley) acct 412 W 6th R410 h758 W Adams Blvd
 " Ralph G jr acct R G Dow r758 W Adams Blvd
 " Ralph O slsmn The Sharpe Mfg Co r Santa Monica
 " Ralph S (Helen) slsmn Tabulating Mach Co h2739 Waverly dr
 " Rebecca waiter r112 S Hope
 " Robt cook r3823 S Bway
 " Robt W ins agt h6604 1/2 Victoria av
 " Robt W mfrs agt 1206 Maple av R906
 " Roxanna Mrs h425 W 33d
 " Ruth maid r1382 E Washn Blvd
 " Ruth sten r6447 Maryland dr
 " Saml slsmn r915 N Gardner
 " Saml H (Eliz) jan h1606 W 37th
 " Tisdale J coml artist h1030 Valencia
 " Wilber electn h1026 1/2 Valencia
 " Wilber O sec Valencia Club r1030 Valencia
 " Wilbur (Minnie) customs broker r1722 N Garfield pl
 " Wm E slsmn r2604 Idell
 " Wilson J cash Ralphs Gro Co r1815 N Gramercy pl
 Dowbridge Corrine F sten r5157 Range View av
 " Norman H (Margt M) ydmn SPCo h5157 Range View av
DOWD. See also Doud
 " Angela E sten r6220 De Longpre av
 " Delia nurse h1548 Cassil pl
 " Donald M clk r8625 1/2 Denver av
 " Eugenia h333 S Grand av
 " Frank h6214 Leland way
 " Fred (Ruby) cbtnkr h916 W 80th
 " Harry E (Melba) supvr Curtis Publishing Co r2221 Elinore
 " Harry J (Maybell K) dentist 947 W 8th R1008 h5351 Russell av
 " Helen r806 W 106th
 " Ira E (Jessie S) h6706 5th av
 " Jack B (Eliz) oilwkr h5350 Verona
 " John (Victoria E) slsmn h223 N Union av
 " John V clk r223 N Union av
 " Jos credit mgr r6220 De Longpre av
 " Jos P (Evelyn R) clk h506 N Boylston
 " Kath bkpr r820 Micheltorena
 " Kath H dentist r2234 N Commonwealth av
 " Margt Mrs h525 S Gramercy pl
 " Margt A Mrs h519 N New Hampshire av
 " Martin W h1167 E 64th
 " Owen J (Edwidge) electn h911 1/2 N Genesee Park r6706 5th av
 " Patk E mgr Tam O'Shanter Inns Inc r Arcadia
 " Patk J (Nellie) firemn h360 S Hancock
 " Patk J jr lab r360 S Hancock
 " Theo E mstrg h8625 Denver av
 " Thos J (Mary C) wtchmnn City Bd of Educ h806 W 106th
 " Wm r1316 Wilshire Blvd
 " Wm J (Theresa) h11239 S Berendo av
 Dowda Virginia (wid Robt) h1012 Hyperion
 Dowdakin O E mach Mitchell Camera Corp r West Los Angeles
 Dowdall Lester A (Clara M) slsmn h636 W 81st
 Dowdell Chanie Z (Blanche) vulc h157 N Bonnie Beach pl
 " Chas B tires 2700 S Figra h1192 Browning Blvd
 " Curtis R (Ada) vulc 1216 S Figra r1403 S Norton av
 " Dickie slsmn r1403 S Norton av
 " Dorothy r5712 La Mirada av
 " Ethel Mrs r387 N Av 57
 " Frank E (Elsie S) h9401 National Blvd
 " Ana (wid J D) h1306 St Joseph's pl
 " Paul r1306 St Joseph's pl
 Dowden Chas L asst mgr Met Life Ins Co r Alhambra
 " E Meredith slsmn r1211 E 75th
 " Frank M pipeftr h3212 S Main
 " Harrison (Ruth A) elocution tchr 3275 Wilshire Blvd h8557 Saturn
 " Hubert L slsmn r1211 E 75th
 " Josie L h1236 N Alexandria av
 " Lawrence A slsmn h1211 E 75th
 " Marian E tchr r1211 E 75th
 " Neatheola J r1005 E 57th
 " Octavia (wid Thos) r423 N Av 66
 Dowding Darrell M (May) h512 S Hobart Blvd
 " Earl H page Jonathan Club h1243 W 3d
 " Gerald L (Winnifred) clk h634 E 85th
 " Norma F h1509 N Hoover
 Dowdle Edw h4525 St Charles pl
 " Grace clk CNT&SBank r1209 S Lake
 Dowdor Frank J (Pearl) electn h759 W 101st
 " Pearl E solr LAExaminer r759 W 101st
 Dowds Alice M furn rms h417 W 3d
 " Roy W (Lillian) with Co Flood Control h5159 Maplewood av
 Dowdy Hayden F (Dorothy) inspr State Dept of Professional and Vocational Standards h 925 1/2 Leighton av
 " Jack H h128 1/2 N Thomas
 " Verma A h654 N Crescent Hts Blvd
 Dowe Amelia L (wid H G) h1606 Redwood
 " Houston jr lab City Eng r926 E 29th
 " Houston G r1606 Redwood
 " Shabeh (Mabel) shoemkr 338 1/2 S Main r761 E 37th
 " Virginia sten h228 S Kenmore av
 Dowell Annie E h1007 N Harvard Blvd
 " Bert L (Gladys B) pres Superior Underwriters r2245 Cambridge av
 " Bertha A Mrs h153 W 111th pl
 " Burney O (Lucille E) slsmn Straub Bros h1441 McDuff
 " Chas F (Eva) h410 W 71st
 " Claudius F tndr reprmn SPCo r1083 N Av 51
 " Clinton W (Emma) electn h123 W 102d
 " Dolores slsmn May Co r Inglewood
 " Dorothy J clk r1866 W 41st pl
 " Frances M police r135 W 50th
 " Gerald M chainmn City Eng r No Hollywood
 " Gus L (Cath) carp h1083 N Av 51
 " Harry F (Elsie) brkmm r3615 Bellevue

DOWELL
 " Harvey L (Eleanor) h1637 Sherbourne dr
 " Herbt A (Nettie) candymkr h1574 Council Jolla av
 " Herbt D slsmgr Pommalic Labtys h543 N La Jolla av
 " Jeremiah W clk Eug Dietzgen Co r Inglewood
 " LaVerne (Dorothy) gas sta opr r1866 41st pl
 " Lawrence R (Geraldine) slsmn h12021 S San Pedro
 " Lee C (Gladys) cbtnkr h1238 N Formosa av
DOWELL LESLIE (Jessie), Reporter L A Examiner, h910 W 34th
 " Marie K slsmn r121 N Flower
 " Mary J (wid Pierce) h3748 Ruthelen
 " Raleigh E clk h932 Irolo
 " Vivian asst Edw Sterling r Santa Monica
 " W M lab Commercial Refrigerator Mfg Co r Huntington Park
 " Walter M musician r612 E 28th
 " Warren (Katie) r7631 Maie av
 " Wm A (Loretta) linemn h4444 Van Horne av
 Dower Jas M (Margt) jan h811 E 77th
 " Jas jr r811 E 77th
 " John M r811 E 77th
 " Sarah K asst supvr Hosp of the Good Samaritan
 Dowers Glenn O (Lucy E) auto mech h8964 W Adams Blvd
 Dower Edith M Mrs waiter Bullock's-Wilshire r Altadena
 " Forrest E (Louise H) phys 1008 W 6th R222 h1324 D 51st pl
 " J Sinclair (N Grace) tchr City Sch h1214 Clark
 " Louise H Mrs (Elsie-Louise Wig Shop) r1324 W 51st pl
 Dowlan Wm C (Leonora) h324 San Vicente Blvd
 Dowland Geo E (Tillie M) supt T S Abbott h245 W 65th
 " Thos clk r814 N Gardner
 " Thos E (Beatrice L) adv mgr Dearden's Furn Co h5654 Lemon Grove av
 Dowle Dorothy nurse Salvation Army Woman's Home r2670 N Griffin av
 " Fred A (Minnie) h411 Bridewell
 Dowler Beatrice W r211 Muirfield rd
 " Earl E (Evelyn) auto mech h842 E 84th pl
 " Edw F (Ethel) slsmn h645 E 119th
 " Frank E (Bessie) glazier h662 E 118th pl
 " G W r226 N Grand av
 " Robt D clk r1932 W 54th
 " Stanley R (Ada M) pntr h108 W 70th
 " Wm D slsmn h1932 W 54th
 Dowling Albt C sergt police LAPD r Van Nuys
 " Alma Mrs h338 S Alvarado
 " Carlos gas sta atdt r356 W 51st
 " Danl P (Kathryn) slsmn h164 W Av 26
 " Dorothy slsmn r5132 Baltimore
 " Edw steelwkr r356 W 51st
 " Edw F mach r221 1/2 S Av 20
 " Ella J slsmn r1308 W Pico
 " Estella C (wid J N) h351 S Oxford av
 " Evaline P tchr City Sch h244 S Alexandria av
 " Evelyn C C S pract 6066 Carlos av
 " Frank C chauff Jack Moore
 " Frank M h734 Kohler
 " Frank R clk h1108 1/2 37th dr
 " Geo h1425 1/2 N Sierra Bonita av
 " Henry (Pauline C) carp r245 S Fremont av
 " Jas A (Mary) pntr h240 W 50th
 " Jas T (May) br mgr Leed's Shoe Stores h1415 Alvarado ter
 " John h536 Calif
 " John r356 W 51st
 " John sten r1937 Clyde av
 " John C (Mary J) cbtnkr h1318 1/2 N Kenmore
 " Josefa B r351 S Oxford av
 " Jos J (Irene) trucker h5215 S San Pedro
 " Kenneth slsmn Helms Bakeries r Inglewood
 " Leo W (Grace) h126 N Vendome
 " Loren E waiter r642 E 47th
 " Loretta M sten r627 N Larchmont Blvd
 " Lucille A sten r627 N Larchmont Blvd
 " Luella M Mrs r424 W 120th
 " Marie (wid C P) h356 W 51st
 " Martin L (Margt J) civ eng h627 N Larchmont Blvd
 " May L clk h126 W Vernon av
 " Minnie maid 5 Berkeley sq
 " Mitchell h942 7th pl
 " Myra D (wid J H) h1203 Flores
 " Patk cook h124 S Flower
 " Pauline C Mrs mgr Tartaglia Apts h245 S Fremont av
 " Rachael A r2660 W 9th
 " Robt slsmn Helms Bakeries r West Los Angeles
 " Roy H (Lydia) h219 E 23d
 " Sam molder Genl Metals Corp r Maywood
 " Wm (Louise) h1733 E 61st
 " Wm J (Beverly) whsmn h1758 W 49th
 " Wm P (Edith) gro 3252 Glendale Blvd h3255 Larga av
 Dowling Mable C Mrs sten L B Minter r Huntington Park
 Dowman Richd h454 S Figra
 Down Arvid orderly Genl Hosp r5872 Crocker
 " Bernard E (Florence) gas sta 1720 W 48th h715 W 101st
 " Noel C (Ruth) radios 3926 S Vmont av h2415 W Jeff Blvd
 Downard Alma Mrs r1563 E 49th
 " Claude E priv sec Chanlor-Canfield Midway Oil Co r West Los Angeles
 " Herbt (Willie D) lab r1466 E 43d
 " Jas mech Fritz Bearing Service h2809 1/2 Oregon
 " Nancy (wid Ed) h1466 E 43d
 " Ralph E police h1459 W 68th
 Downen David E lab r3721 Glen Feliz Blvd
 " Jas (Ruth A) mgr McCadden Court h1304 N McCadden pl
 " Jas E (Maxine) slsmn Prudential Ins Co h1304 N McCadden pl
 " Janet R h731 N St Andrews pl
 " Perry W (Isabelle) auto repr 4720 Sunset Blvd h3721 Glen Feliz Blvd
 Downer Cath Mrs h4776 Franklin av
 " Chas N h1719 1/2 Morton av
 " Clara Mrs h847 S Alvarado
 " David W chauff r1344 1/2 Downey rd
 " Frances (wid A) h1344 1/2 Downey rd
 " Frank (Dolores) uphol h439 E 31st
 " Fredk A (Lena) slsmn Cal Whol Elec Co h8141 W 4th
 " Fredk A jr emp SOCo r8142 W 4th
 " Harold N (Margt) r1057 S Norton av
 " Hugh L chauff Natl Furn Co r Van Nuys
 " Jas R h8361 1/2 Blackburn av
 " John H (Lillian M) confy 1318 E 38th h462 E 37th
 " John R h2152 W 85th
 " Jos D (Viola H) slsmn W S Chambers h1340 Liberty
 " Jos H clk h3045 1/2 E 4th
 " Pierce A r4776 Franklin av
 " Raymond H (Verna) h1028 N Hayworth av
 " Wayne (Billie) garagemn h5800 Carlton way
DOWNES. See also Downs
 " Alf H (Gertrude) slsmn h1332 Bond
 " Barbara r535 S Oxford av
 " Carl S tchr UCLA r Santa Monica
 " Chas N r4606 S Vmont av
 " Christina F clk Dept Water & Power r Maywood
 " Edith mntr Societes Hats Inc r La Crescenta
 " Edw (Virginia) h1271 Sunset Blvd
 " Elvina B (wid J J) sten r1323 N June

FIRST INDUSTRIAL LOAN

Company of California

A Complete Loan Service at Charges Among the Lowest in Southern California. New Cars Financed (5% Flat) Automobile Loans (at 6% Discount) Furniture Loans at \$10.00 per hundred. Collateral Loans — (on approved Stocks & Bonds 5% to 6% discount). Personal Loans (Co-maker and no co-maker security at our usual low rates).

Los Angeles
653 S. Spring St.
Huntington Park
6712-14 Pacific Ave.
Long Beach
136 E. First St.

Western Union



TELEGRAMS

To convey best wishes when friends are...

- ✓ ENGAGED
 - ✓ MARRIED
 - ✓ PROMOTED
 - ✓ GRADUATED
 - ✓ ELECTED to OFFICE
 - ✓ WINNERS of CONTESTS
 - ✓ OPENING NEW STORE
- and when they celebrate
- ✓ ANNIVERSARIES
 - ✓ BIRTHDAYS
 - ✓ BIRTH of a CHILD
- and when they make
- ✓ A HIT ON THE STAGE
 - ✓ as a GOOD SPEECH

Ask for samples of the colorful blanks

LOCAL RATE 20¢

It's Easier To Pay The Federal Way

720 South Broadway—Downtown
4615 South Broadway
8430 South Vermont Avenue
6623 Pacific Blvd., Huntington Park
4809 Whittier Blvd., East L. A.

FEDERAL

Every Home and Apparel Need on Easy Credit

DOUGLAS
" P O r137 E 3d
" Patricia with Wilshire Amusement Co
" Paul estimator T F Merrill
" Paul T clk Inter-Ocean Steamship Corp r So Pasa
" Peter electn h2701 S Orange dr
" Philip H (Gladys) fctywrk h1051 S Boyle av
" Phillip M clk r415 S Union dr
" R Vincent (Dorothy) clk h1483 Shenandoah
" Ray (Stella) h1336 Shatto
" Raymond h1668 E 50th
" Rena clk r1126 W 52d
" Richd E (Grace E) druggs 4298 Union Pacific av h1338 Downey rd
" Riley (Clara) mech h1715 N Av 54
" Robt r186 E Jeff blvd
" Robt r434 S Flower
" Robt addt Ontra Cafeteria
" Robt emp Bradley Optical Co r251 S Olive
" Robt A carp r275 S Union av
" Robt A slsmn r1026 Wilshire blvd
" Robt C h704 W 54th
" Robt O pharm SR&Co r1338 Downey rd
" Robt F h1481 Shenandoah
" Robt M car repr SPCo
" Robt R r3618 Aureola blvd
" Roy (Virginia) dept hd Paramount Pictures h723 Westbourne dr
" Royce furnwkr r6411 Avalon blvd
" Ruth r694 E 46th
" Ruth dep clk Municipal Court r5906 8th av
" Ruth L clk US Int Rev r Temple City
" S B r905 S Grand av
" Sadie Mrs r1057 S Westn av
" Saml h1057 S New Hampshire av
" Saml (Lotus) h877 E 57th
" Saml H firemn WOCO r Downey
" Sarah Mrs h694 E 46th
" Shannon (Alice) bkpr h1277 1/2 39th pl
" Sharon h1801 N Kingsley dr
" Stacy B clk SFRy r3539 E 6th
" Temple Universal Brotherhood of Spiritualists 1434 E 21st
" Thelma smstrs h800 S Burlington av
" Thos (Dorothy) r547 N Beachwood dr
" Thos B (Jessie P) h3195 W Olympic blvd
" Thos S clk Z G Saveland
" Thornton G (Price Waterhouse & Co) r Glendale
" Tom int dec 6689 Sunset blvd h8426 DeLong-Pre av
" Truly S Mrs r5650 Carlton way
" Ulys (Marie H) aircrftwkr r1445 N Ogden
" Verne r1053 W 53d
" Vivian Mrs sec Cal Community Foundation
" W Harold r703 S Berendo
" W Harold (Kath) slsmn PPGCo r1519 Bentley av
" Wallace L kitchenwkr Genl Hosp r1100 N Mission rd
" Walter r201 S Grand av
" Walter mech r231 S Bunker Hill av
" Walter porter r4410 Mettler av
" Walter D lab SPCo
" Walter D v-pres Mission Bell Radio Mfg Co r Pasa
" Wayne P (Ethel L) mech h3211 Minnesota
" Wm aircrftwkr r1165 N Genesee
" Wm studiowkr r6028 1/2 Barton av
" Wm A (Clara) slsmn h540 W 49th
" Wm E (Georgie) storemkr SCGCo r823 W 64th
" Wm G (Thelma) h117 S Alexandria av
" Wm G h5453 9th av
" Wm G (Casey The Mailer) r Cul City
" Wm H (Mae) constwkr h2830 Marsh
" Wm J (Charlotte) clk h2216 Harcourt av
" Wm J (Virginia) firemn SPCo h806 E 95th
" Wm J (Mary) mech h2962 Glenview av
" Wm S (Ethel) labty techn h6416 1/2 La Mirada av
" Wilton slsmn h626 N Windsor blvd
" Winadele (wid Chas) r1044 1/2 N Sweetzer
" Winnie E r1178 E Vernon av
DOUGLASS, See also Douglas
" Addie M (wid Lester) r2521 E 3d
" Aileen emp NRCO r1579 W 49th
" Allen F (Ruth) slsmn Heywood-Wakefield Co h827 Green av
" Alma D sec Penfield Co of Cal r1332 Shatto
" Alta R clk r1705 1/2 W 60th
" Alyce L clk LAOWF r1579 W 49th
" Amanda M (wid W B) r648 Cypress av
" Andw J (Thelma G) plstr h538 1/2 W 78th
" Arch asst sec-treas Pac Clay Products r306 W Av 26
" Ardilla Mrs h225 S Av 59
" Arlington W (Ruth) porter h736 E 33d
" Arth H auto parts 1713 Firestone blvd
" Arth H mach r1123 Court
" Beatrice B clk Pub Sch r747 Heliotrope dr
" Bernice clk SOTCo r La Crescenta
" C Richd (Sarah) h2529 Eastlake av
" Calvin L custodian Pub Sch r1545 E 41st pl
" Chas h4225 S Vmont av
" Chas A restr 720 E 2d
" Chas L (Harriett D) optlyr h2915 Rimpau
" Chas R (Dorothy) eng CBS h3103 Griffith Park blvd
" Clara E Mrs h1777 N Vmont av
" Claude shoe shiner 1167 S Bway r1127 1/2 E Pico blvd
" Cynthia Mrs r603 1/2 Tularosa dr
" David L plmbr r1462 N Av 46
" De Verne E (Pauline) slsmn h1323 3d av
" Donald aircrftwkr r216 N Catalina
" Dorothy F Mrs mgr Irolo Arms Apts h770 Irolo
" Earl S (Margt) pntr h1433 Oak
" Eliz A r1579 W 49th

DOUGLASS
" Ella M (wid C M) h1538 N Kenmore av
" F Gregor barber 5168 S Vmont av r1125 Grand View
" Forrest G (Mabel) eng h542 1/2 Kendall av
" G Carl (Geraldine) clk r235 W 51st
" Geo H phys 269 S La Brea av r No Hwood
" Geo O r923 S Mathews
" Geo R (Mildred) with O'Melveny-Wagenseller & Durst h651 W 111th
" Geraldine sten E T Mape Music Co r5154 S Van Ness av
" Glenn (Esther) h632 W 43d pl
" Gwen B clk r6139 Burwood av
" Harry E slsmn B F McDonald Co r Glendale
" Howard H slsmn r1123 Court
" Jack L (Frances R) plmbr 4606 York blvd h1462 N Av 46
" Jack S (Marie) firemn LAFD h10016 LaSalle av
" Jas H (Christine) custodian Pub Sch h1310 E 56th
" Jas L h1579 W 49th
" Jas W r322 E 33d
" John B lab City Eng r Watts
" John G (Willie R) h332 E 33d
" John M carrier PO r La Crescenta
" John R (Amy) carrier PO h3046 Inez
" John W clk r1123 Court
" Jos S (Ruth) variety store 4479 Sunset blvd
" Julian B (Beatrice B) bkpr h747 Heliotrope dr
" Kathleen Mrs sten r2800 Wellington rd
" Kenneth H (Alma) pntr h1421 65th pl
" Leda bond clk Co Counsel r456 Shatto pl
" Lelia (wid O L) h1545 E 41st pl
" Louis H (Thelma I) acct h4245 Brunswick av
" Mansel W (Eunice) aircrftwkr h856 W Gage
" Marge Mrs sec G E Polentz r2952 Wynwood la
" Mary h526 S Oxford av
" Mary (wid Jas) h2531 Ridgeley dr
" Mary E clk r816 Irolo
" Mary E (wid H R) gro 3801 Lanfranco h3805 do
" Mary H r1123 Court
" Mary M (wid F E) h1153 Augusta
" Maud E r101 S Oxford av
" Mildred M h1214 Mohawk
" Nelson jr pres Nelson Douglas & Co r Bev Hills
DOUGLASS NELSON & CO, Nelson Douglas Jr Pres, E J Evans V-Pres, O I Lamoreaux Sec-Treas, Investment Securities, 220 Security Bldg, 510 S Spring, Tel Vandike 6181
" Orpha L sten Hambly Graham Co r1520 W 8th
" Paul mech h1133 W 1st
" Peggy L tel opr r2531 Ridgeley dr
" Peter T (Geraldine) custodian Pub Sch h1547 E 41st pl
" President (Ada) jan CJD h1305 1/2 E 56th
" R A ydmn SPCo r359 E 61st
" Ralph (Grace) slsmn Seaside Industries h1224 W 8th
" Richd S (Kath) h2408 S Orange dr
" Robt r888 N Mariposa av
" Robt H (Inez) tchr Pub Sch h5113 Argus dr
" Robt R r111 W 71st
" Robt R shipldr r5207 Ruthelen
" Robt R wchmn r1513 S Berendo
" Rowland (Evelyn) driver h1160 W 67th
" Roy J (Cath) mach UPRCo h5474 Templeton
" Ruth P Mrs nurse Genl Hosp r736 E 33d
" Sadie G musician r324 S Kenmore av
" Saml R (Alta R) jan h1705 1/2 W 60th
" Temple 1434 E 21st
" Thos (Ada) real est 5440 York blvd
" Thos J (May) ins agt h1024 Meadowbrook
" Walter A slsmn West Adams Chevrolet r Inglwd
" Walter D II (Charlotte) h501 S Hudson av
" Wm (Chloe) h142 S Sycamore av
" Wm (Ruth) lab h1622 W 37th
" Wm H h1123 Court
" Wm H (Mae) h329 N Fuller av
" Wm H (Carmen) carp h923 S Mathews
" Wm H jr clk r923 S Mathews
" Wm L (Jewel L) h5207 Ruthelen
" Wm L jr USA r5207 Ruthelen
" Zephyr Mrs maid r4016 McKinley av
" Douillard Emile A baker Ahrens Bakers r Inglwd
" Frank restr 1310 N Westn av
" Frank A asmbler Serv Auto Body Wks r5427 Fountain av
" Frank T meter reprmn SCGCo r3032 Cazador
" Louis A jan h2011 Cypress av
" Doull Alf E (Helen) carp h1131 W 67th
" Nelson L (Minna) h5712 Aldama
" Ralph M (Zelma) mtrmn h732 N Rowen av
" Douma Jacob H (Allene) asst eng USEng h2320 1/2 Scarff
" Doumakes Alex (Jennie) prod mgr James Doumakes h5342 Mullen av
" Jas (Mary) confy mfr 711 E Jeff blvd r4918 Angeles Vista blvd
" John J (Effie) mgr James Doumakes h1722 W 22d
" Doumani Malick K (Olga) pres Pedro Petroleum Corp h736 S Windsor blvd
" Olga S Mrs v-pres Pedro Petroleum Corp r736 S Windsor blvd
" Peter (Lillian) r616 N Beachwood dr
" Selma r736 S Windsor blvd
" Dounias Wm (Pearl) pdr h1171 S Lorena
" Dounoros Georgiana A waiter r752 S Main
" Dounton Leslie M sec Dr Hara h432 S Boyle av
" Dourphin Hattie Mrs r1908 W 6th
" Dourassov Serge (Bessie W) h232 W 40th pl
" Dournen Louis (Rosin) lab h7525 Whitsett av

Douroux Robt E (Obdulia) cable splicer h1719 1/2 W 48th
" Dourrel Victor (Sarah) h605 W 55th
" Dourvos Paul r975 N Vendome
" Douse Arth bkpr Preston Sturges r8228 Sunset blvd
" Richd G r1834 N Av 53
" Winnifred G (wid F A) tchr r1834 N Av 53
" Douthard Thos M (Flurrena) pntr h3751 Ruthelen
" Douthit Chas r833 W 9th
" Chas T waiter r2223 Oak Glen pl
" Clifford (Sue) news vendor h1344 Temple
" Dollie Mrs r3228 W 8th
" Dorothy A r448 N Av 56
" Edna O tchr Pub Sch h376 N Av 57
" Geneva clk Pub Sch r1422 Hi Point
" Jasper J (Goldie A) h1422 Hi Point
" Jean waiter r320 N Ardmore av
" Joann clk h637 N Bronson av
" John W (Kath) slsmn h448 N Av 56
" W Mark sand blaster 5529 Bandera
" Wm M (Helen) h3012 Cloverdale av
" Douthitt Ethel Mrs r3488 E 5th
" Grace B priv sec CDco h861 Fedora
" J G h1243 W 6th
" John M h1639 3d av
" Lillian M r329 W 41st pl
" Zannibel h1637 3d av
" Douthwaite Arch S (Mayme) lather h7029 4th av
" Mary H (wid Guy) h105 S St Andrews pl
" Richd K lather r7029 4th av
" Doutre Jos (Clara) mach h5140 Ithaca av
" Rene J (Esther J) electn h1208 37th dr
" Douth Eng sta addt r427 Nmdie pl
" Douty Chas (Reba) mach h942 1/2 S Breed
" Douvas Gustavo (Margt) h3435 Hunter
" Jas (Irene) pdr h3516 Garnet
" Douville Chas M (Margt) h4354 Lockwood av
" Harry (Mary) h1541 11th pl
" Douvos Anthony (Edna) tailor h6216 Hayes av
" Dove Alf A (Helen) stereo Daily News h2210 San Marco dr
" Alice h687 Shatto pl
" Anna Mrs r1808 Leighton av
" Annie M mtrs art 122 E 7th R10 r687 Shatto pl
" Anthony elev opr r913 E 6th
" Betty tel opr h7267 Franklin av
" Carrie (wid W T) h7267 Franklin av
" Cleaners clo clnrs 4136 Bev blvd
" Clyde (Nellie) mech h901 E 83d
" Cordelia (wid Carl) mach opr r1210 E 76th
" Dayton (Beth) lab h1226 1/2 E 76th
" Edw R foremn Daily News h170 Douglas
" Emil V (Myrtle) h3026 Coolidge av
" Grace M Mrs h3913 Degnan blvd
" Gus (Edith) gdnr r355 E 109th
" Ira (Lela) mach h713 S Rowan av
" John M r7267 Franklin av
" Lee A (Rose) mech h1436 N Hudson av
" Mammie (wid Wiley) h1652 1/2 E 49th
" Mfr Co (M J Goldberg S K Flam) underwear mfrs 1013 S Los Angeles 3d fl
" Martha B bkpr r7267 Franklin av
" Marty (wid Roy) h130 S New Hampshire av
" Matilda C Mrs h1427 E 54th
" Robt C (Rosa) lab h1652 E 49th
" Robt T whsmn r7267 Franklin av
" Veil E custodian Pub Sch r3026 Coolidge av
" Verne aircrftwkr r950 Menlo av
" Dovell Lisetta r3947 S Harvard blvd
" Zethyl clk r368 W 42d pl
" Dover Albt L (Mabel D) clk UPT h414 S Evergreen av
" Apartments 4649 Bev blvd
" Edna Mrs r755 W 97th
" Geo E (Dorothy) restrwkr h3177 Carlyle
" Geo J (Grace) USA h2927 S Catalina
" Helene bkpr Lee B Mettler Co r526 N Plymouth blvd
" Jack E (Elsie) chauff h1635 1/2 Temple
" Jas r234 S Olive
" Lary h5200 Marathon
" Leda C r4411 Honduras
" Pearl h4006 1/2 S Central av
" Pearl M Mrs maid r1122 E Sta Bar av
" Wm (Rose) clk h1314 Keniston av
" Wm P (Virble) lab h7664 Hooper av
" Doverspike Donald L (Helen) h543 La Verne av
" Dovesy Ada M Mrs smstrs h1269 1/2 S Eastern av
" Frank r205 E 5th
" Helen Mrs h1451 N Genesee
" Michl J clk SPCo r446 W 111th pl
" Doyard Louis (Ethyle A) clk h1425 Echo Park av
" Dovia Isaac (Pauline) acct Thompson-Moss & Co h4107 Garthwaite av
" Doviatt Theo (Maxine) fctywrk h5115 Granada
" Walter M (Evelyn) blueprinter SCGCo h4524 1/2 Willowbrook av
" Dovicca Anthony tailor h1559 N Bronson av
" Dovich John constwkr r434 N Hill
" Dovicke Raymond r1720 N Nmdie av
" Dovidio Ernest A (Florence) indwkr h1917 1/2 Workman
" Ferdinando (Josephine) blksmith SPCo h2115 Mozart
" Frank blkmr UPRCo r Huntington Pk
" Guido A (Argie) mach SPCo h1917 Workman
" Jos (Albina) blksmith h716 E 75th
" Tony r716 E 75th
" Doyville Loren cook r917 W 5th
" Dovin Mary h412 S Lake
" Dow Abner H (Flora) acct h2807 Holt av
" Abram L h2313 1/2 Fairfield av
" Ada J (wid F J) h1818 N Van Ness av
" Alex (Eliz) carp h6095 Meridian
" Benington B (Frances) driver h1941 Arapahoe
" C H Mrs h1057 S Westn av
" Cecil C h1430 W 29th
" Chas E (Edith V) h223 E Av 39
" Chas H (Juanita) driver h827 E 95th
" Christina (wid F B) h535 Oleander dr
" Clinton S (Billy R) h240 1/2 S Poinsettia pl
" Courtney L clk DW&P h405 Loma dr
" Doris F r5712 5th av
" Dorothy clk r5856 Lexington av

PACIFIC AUTOMOBILE INSURANCE CO.

INDIVIDUAL UNDERWRITING CORPORATION

GENERAL AGENT

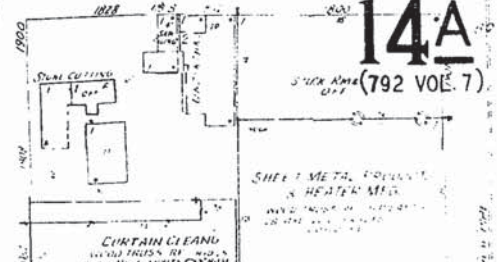
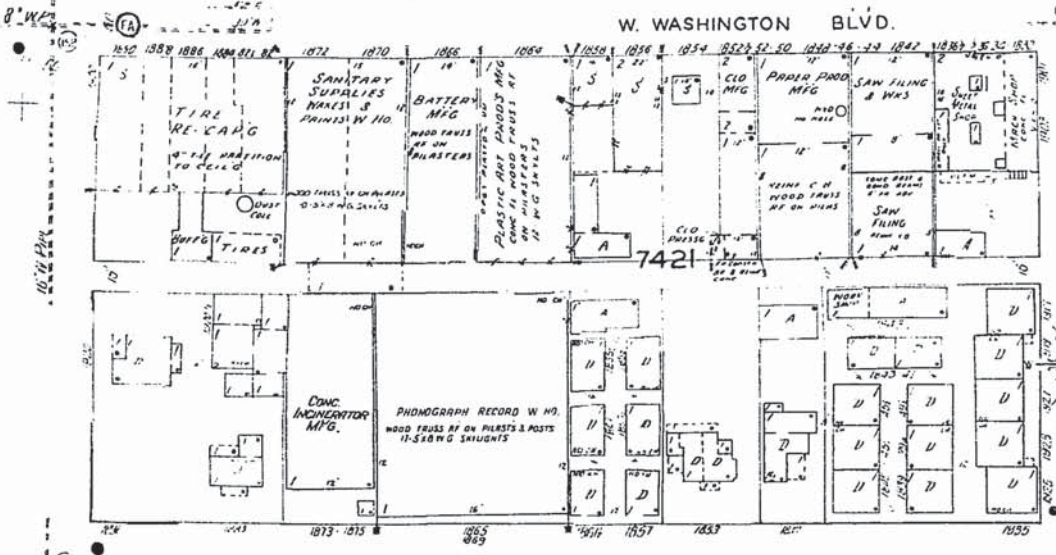
AUTOMOBILE INSURANCE

1530 South Olive St.

Tel. Richmond 5551

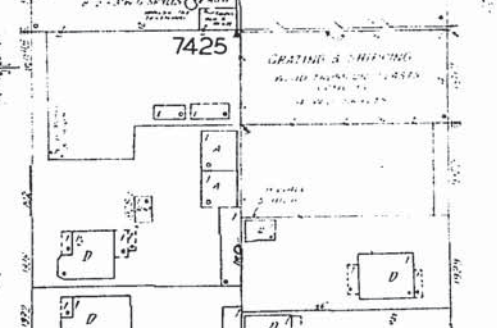
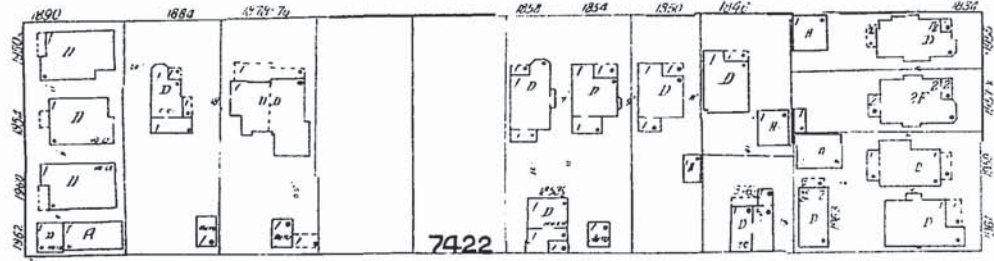
APPENDIX B
Sanborn Maps

W. WASHINGTON BLVD.



14A
STICK AREA (792 VOL. 7)

CORDOVA



7422

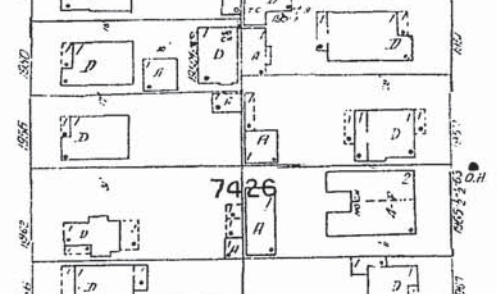
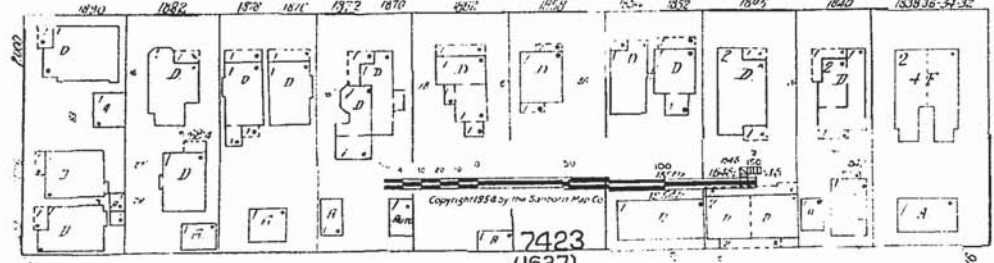
7426

S. NORMANDIE AV.

W. 20TH ST.

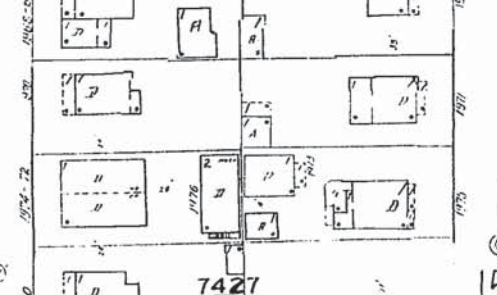
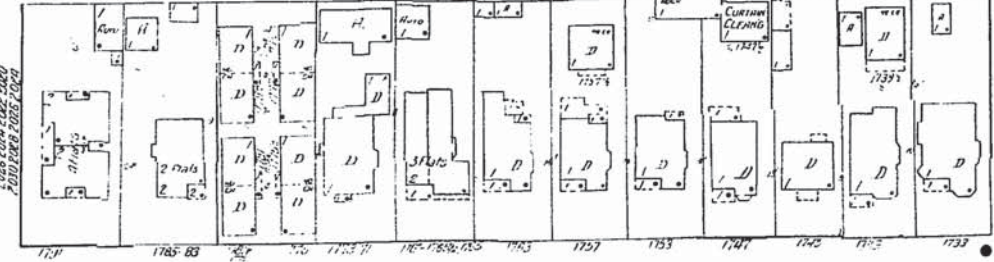
S. MARIPOSA AV.

RAYMOND AV.



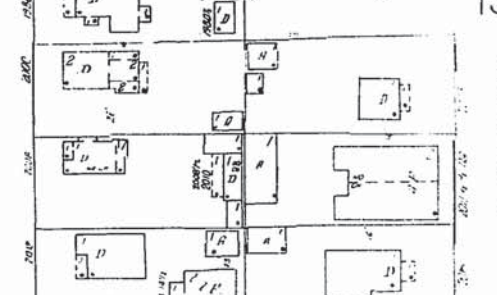
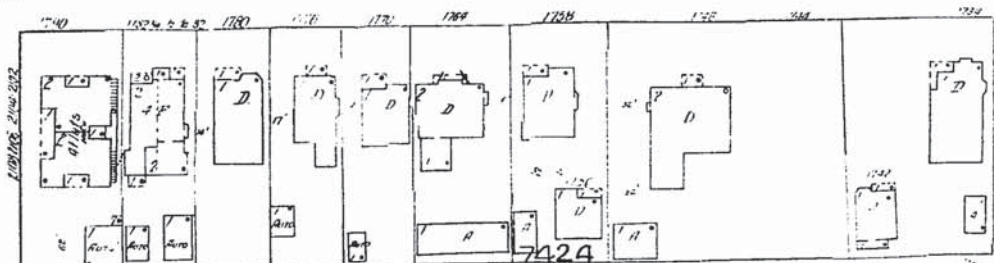
7427

7423
(1637)



7428

W. 21ST ST.



7424
(4159)

45

W. 22ND ST.

46

LOS ANGELES, CAL. 487

SOUTH PARK AV.

432

S. SAN PEDRO 428

ST.

STANFORD

AV.

ST.

488

E. JEFFERSON

453

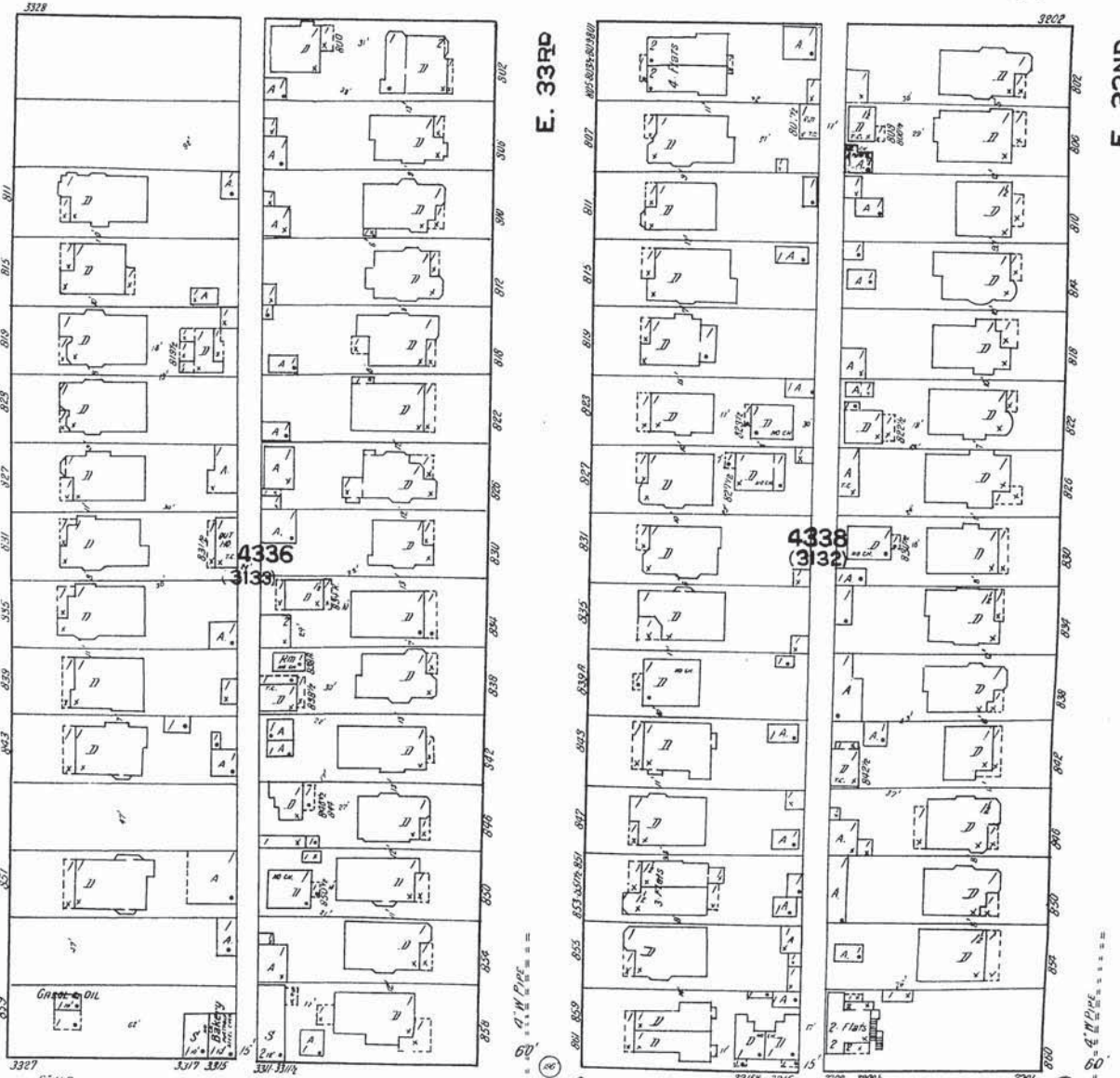
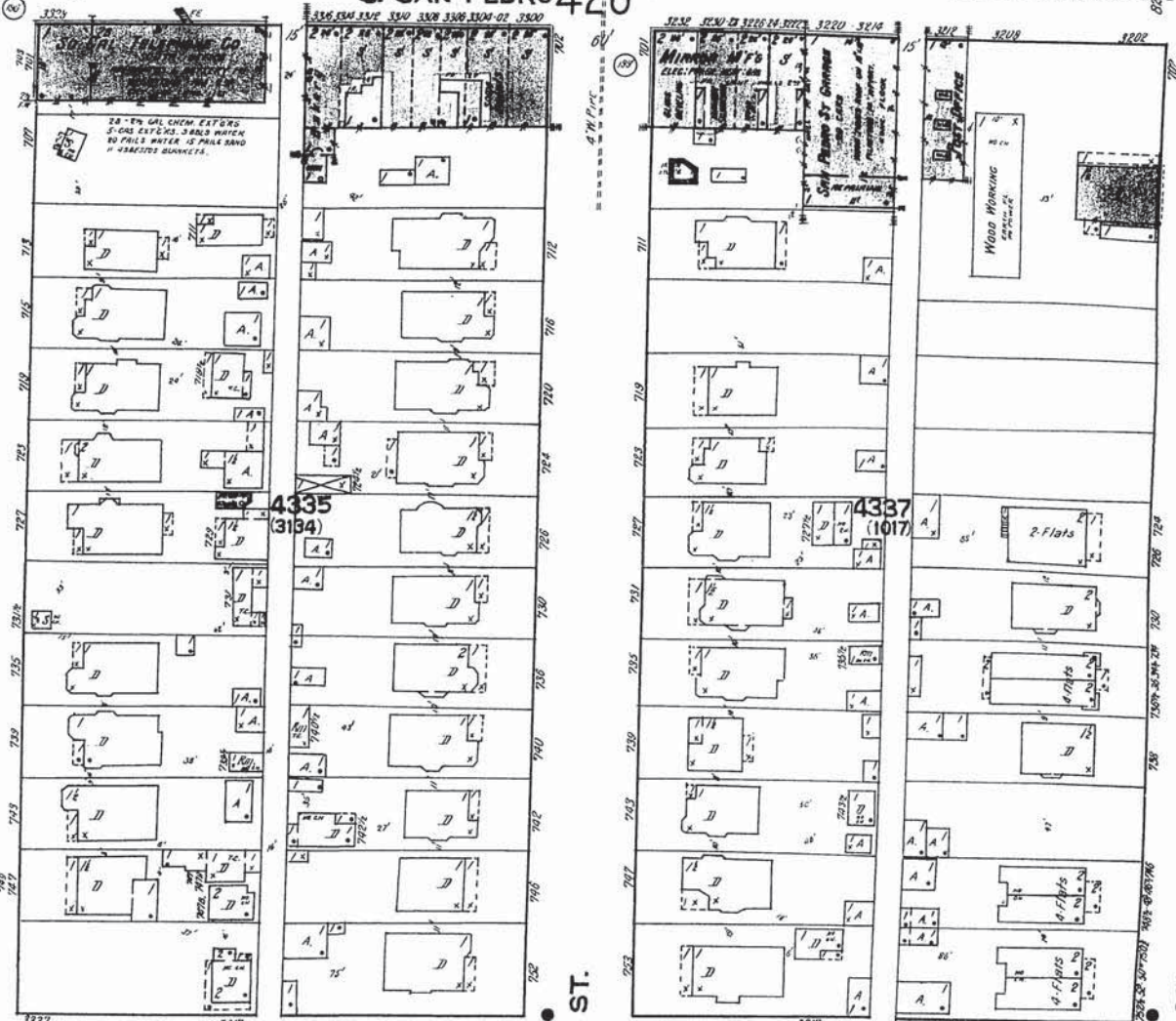
GRIFFITH AV. & W. 2

454

E. 33RD

E. 32ND

GRIFFITH 465 AV.



Scale of Feet. 0 50 100

Copyright 1923 by the Sanborn Map Co.

6991

SCALE 100 FT. TO AN INCH

(4328) LOS ANGELES, CAL. VOL. 6.

6996

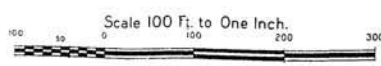
NEW SHEET JULY 1924



U O I U M B
S B B

THESE BLOCKS NOW SHOWN ON VOL. 36.

THIS BLOCK NOW SHOWN ON VOL. 36.



996

