



*"To enrich lives through effective and caring service"*



**Stan Wisniewski**  
Director

**Kerry Silverstrom**  
Chief Deputy

April 26, 2005

TO: Each Supervisor  
FROM: Stan Wisniewski, Director  
SUBJECT: **MARINA DEL REY DREDGING**

As part of its maintenance obligation to keep the Marina del Rey federal channel open and navigable, the U. S. Army Corps of Engineers (Corps) last dredged the Marina del Rey channel and its entrances in 2000 and has since done annual soundings to monitor shoaling in the Marina's entrances. Pursuant to its most recent sounding in March that evidenced the effect of winter storms, the Corps has advised of its need to dredge about 800,000 cubic yards from the Marina's main channel and north and south entrances, a project nearing design completion that is scheduled for March 2006 if federal funding is budgeted. The attached Corps graphic provides more perspective on the need for dredging. The Marina's entrances, which have a design depth of 21 feet, measure 15-20 feet in some areas – note the Sheriff's Harbor Patrol buoys off waters at or less than 10 feet for public safety.

Since the last dredging, our Department has worked closely with our federal representatives, the Corps and the Chief Administrative Office to anticipate the need for continued federal funding to support engineering design and ongoing maintenance dredging of Marina del Rey. We also have served on several multi-jurisdictional study efforts and task forces to determine both short- and long-term solutions for regional sediment supply, dredged materials management and handling and proper disposal of contaminated sediments. As you can see from a review of the following table covering Fiscal Years 2004 through 2006, we have so far been able to secure only \$100,000 in federal funding for design.

**Marina del Rey Maintenance Dredging**  
Summary of Corps Appropriations Requests

<b>Federal Fiscal Year</b>	<b>Los Angeles County/C-MANC* Recommendation</b>	<b>President's Budget</b>	<b>Conference Report Results</b>
<b>FY 2004</b>	\$200,000 (design only)	\$0	\$100,000 (design only)
<b>FY 2005</b>	\$4,000,000 (complete design + construction)	\$0	\$0
<b>FY 2006</b>	\$7,990,000 (construction + STAR <sup>1</sup> )	\$0	(undetermined; in process)

\*C-MANC is the California Marine and Navigation Conference, a professional marine advocacy organization.

<sup>1</sup> Storage, Treatment And Recycling facility, pilot project to process contaminated sediment for adjacent beach reuse

With respect to FY 2006 and in coordination with the Chief Administrative Office and the County's Washington, D.C. lobbyist, we have submitted all of our appropriations requests to Congress through Senators Dianne Feinstein and Barbara Boxer and Representative Jane Harman in line with the appropriations request cycle. Support letters have been written and calls have been made to garner support for our requests in both Washington, D.C. and California. We also recently hosted Colonel Alex Dornstauder, newly assigned as the Los Angeles District Corps District Engineer from his appointment as Chief of Staff for the Gulf Region Division in Baghdad, Iraq, taking him aboard the U.S. Coast Guard "Halibut" to see firsthand the Marina's entrances.

Currently, staffs of the Senate and House Energy & Water Appropriations Subcommittees are each engaged in preparing bills to include funding requests each feels are worthy of consideration in this 109<sup>th</sup> Congress. Both Subcommittees are scheduled to have bills ready for consideration by May 10, 2005, with markups for their respective Appropriations Committees in the May-June time frame.

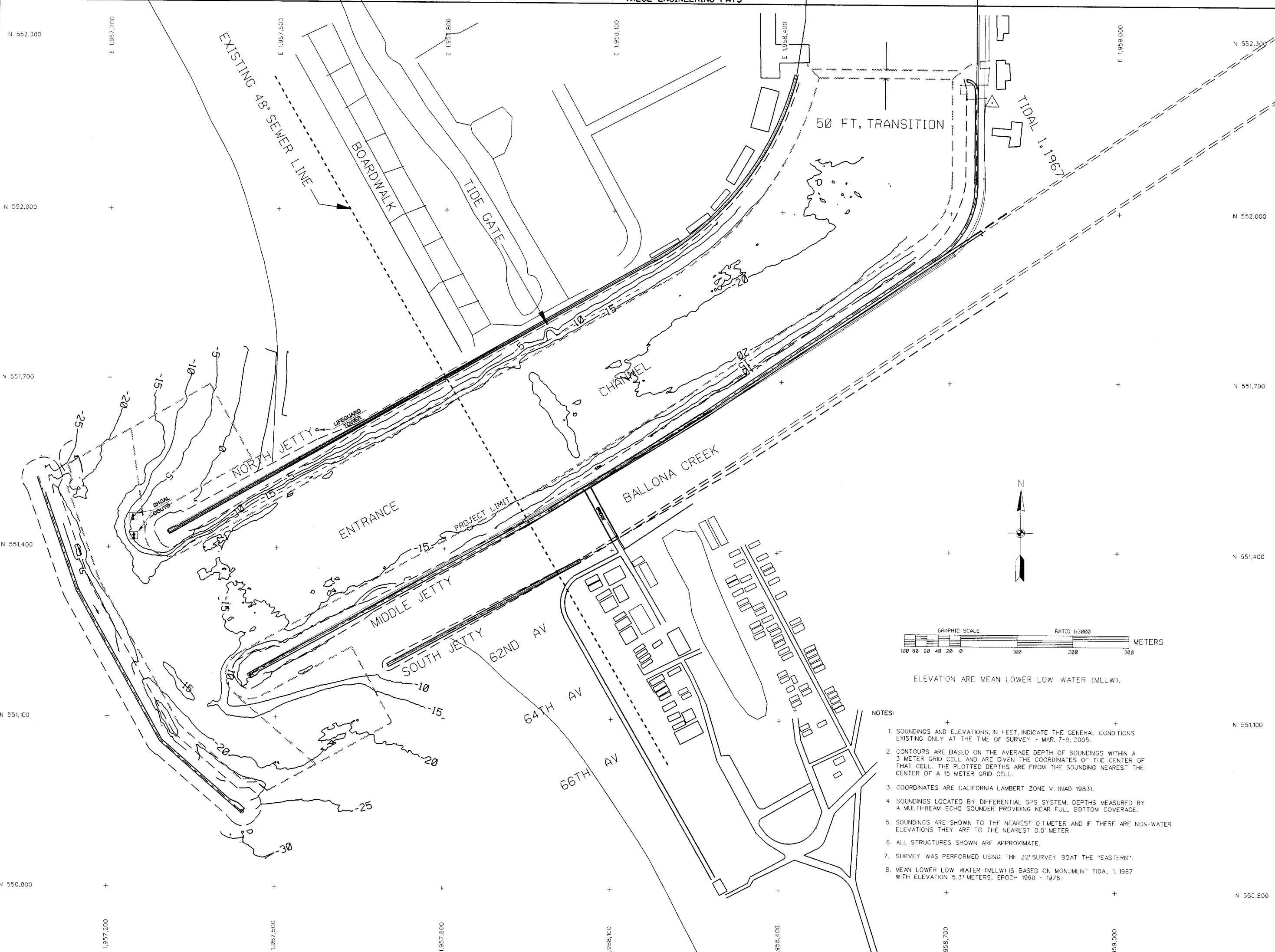
Anticipating your upcoming trip to Washington, D.C., we hope you will have the opportunity to appeal for the \$7.99 million Marina dredging project. Keeping Marina del Rey open and navigable for the U.S. Coast Guard and County search and rescue functions is paramount, but also important are recreational and commercial boating activities that depend on the safety of Marina del Rey's channel and entrances on a daily basis.

If you need any further information, please call me.

SW:KGS:JJC:kgs

Attachment

c: Chief Administrative Office  
Each Chief Deputy  
Each Board Deputy



- NOTES:
- SOUNDINGS AND ELEVATIONS, IN FEET, INDICATE THE GENERAL CONDITIONS EXISTING ONLY AT THE TIME OF SURVEY - MAR. 7-9, 2005.
  - CONTOURS ARE BASED ON THE AVERAGE DEPTH OF SOUNDINGS WITHIN A 3 METER GRID CELL AND ARE GIVEN THE COORDINATES OF THE CENTER OF THAT CELL. THE PLOTTED DEPTHS ARE FROM THE SOUNDING NEAREST THE CENTER OF A 15 METER GRID CELL.
  - COORDINATES ARE CALIFORNIA LAMBERT ZONE V. (NAD 1983).
  - SOUNDINGS LOCATED BY DIFFERENTIAL GPS SYSTEM. DEPTHS MEASURED BY A MULTI-BEAM ECHO SOUNDER PROVIDING NEAR FULL BOTTOM COVERAGE.
  - SOUNDINGS ARE SHOWN TO THE NEAREST 0.1 METER AND IF THERE ARE NON-WATER ELEVATIONS THEY ARE TO THE NEAREST 0.01 METER.
  - ALL STRUCTURES SHOWN ARE APPROXIMATE.
  - SURVEY WAS PERFORMED USING THE 22' SURVEY BOAT THE "EASTERN".
  - MEAN LOWER LOW WATER (MLLW) IS BASED ON MONUMENT TIDAL 1, 1967 WITH ELEVATION 5.31 METERS, EPOCH 1960 - 1978.

SYMBOL	DESCRIPTIONS	DATE	APPROVAL

NAVIGATION IMPROVEMENT  
 LOS ANGELES COUNTY, CALIFORNIA  
**MARINA DEL REY HARBOR**  
 CONDITION SURVEY  
 MARCH 7-9, 2005

DESIGNED BY:	DATE:
DRAWN BY:	CADD FILE NAME: M0020400-3.DGN
CHECKED BY:	
U.S. ARMY ENGINEER DISTRICT LOS ANGELES CORPS OF ENGINEERS	RALPH D. HAMRICK CHIEF SURVEY & MAPPING SECTION B-1796 SPEC. NO. DACW09-XX-X-XXXX
U.S. ARMY ENGINEER DISTRICT LOS ANGELES CORPS OF ENGINEERS	DISTRICT FILE NO.