



COUNTY OF LOS ANGELES

DEPARTMENT OF PUBLIC WORKS

900 SOUTH FREMONT AVENUE
ALHAMBRA, CALIFORNIA 91803-1331
Telephone: (626) 458-5100
www.ladpw.org

JAMES A. NOYES, Director

ADDRESS ALL CORRESPONDENCE TO:
P.O. BOX 1460
ALHAMBRA, CALIFORNIA 91802-1460

June 26, 2003

IN REPLY PLEASE

REFER TO FILE: **W-9**

The Honorable Board of Supervisors
County of Los Angeles
383 Kenneth Hahn Hall of Administration
500 West Temple Street
Los Angeles, CA 90012

Dear Supervisors:

**SEWER SERVICE CHARGES
SEWER MAINTENANCE DISTRICTS
ALL SUPERVISORIAL DISTRICTS
4 VOTES**

IT IS RECOMMENDED THAT YOUR BOARD:

1. Receive and file the Sewer Service Charge Annual Report for Fiscal Year 2003-04 for the Los Angeles County Sewer Maintenance Districts (Enclosure A).
2. Set a date for a public hearing to consider: (a) the Sewer Service Charge Annual Report; (b) a reduction in the Additional Annual Zone Sewer Service Charge for the Aneta Zone of the Consolidated Sewer Maintenance District of \$20 per sewage unit, from \$40 to \$20; and (c) a reduction in the Additional Annual Zone Sewer Service Charge for the Topanga Zone of the Consolidated Sewer Maintenance District of \$14.80 per sewage unit, from \$416.40 to \$401.60.
3. Instruct the Executive Officer of the Board to advertise, in English and Spanish, the legal Notice of Hearing for said fees (Enclosure B).

AFTER THE PUBLIC HEARING, IT IS RECOMMENDED THAT YOUR BOARD:

1. Adopt the Sewer Service Charge Annual Report for Fiscal Year 2003-04 for the Los Angeles County Sewer Maintenance Districts.

2. Approve: (a) the Sewer Service Charge Annual Report; (b) a reduction in the Additional Annual Zone Sewer Service Charge for the Aneta Zone of the Consolidated Sewer Maintenance District of \$20 per sewage unit, from \$40 to \$20; and (c) a reduction in the Additional Annual Zone Sewer Service Charge for the Topanga Zone of \$14.80 per sewage unit, from \$416.40 to \$401.60, in Fiscal Year 2003-04.
3. Find that the proposed ordinance amending Title 20 – Utilities of the Los Angeles County Code is to fund operating expenses and capital projects to maintain services in existing service areas and is exempt from the California Environmental Quality Act pursuant to the Public Resources Code, Section 21080(b)(8).
4. Adopt the proposed ordinance.

PURPOSE/JUSTIFICATION OF RECOMMENDED ACTION

The reduction of \$20, from \$40 to \$20 per sewage unit, in the annual zone sewer service charge for the Aneta Zone is due to lower disposal charge by the City of Los Angeles.

The reduction of \$14.80, from \$416.40 to \$401.60 per sewage unit, for the Topanga Zone is a result of the equivalent reduction in sewage disposal charge by the Las Virgenes Municipal Water District for the use of their Tapia Treatment Plant by the Topanga Zone.

The annual sewer service charges for the Marina Sewer Maintenance District, the Accumulative Capital Outlay Fund of the Consolidated Sewer Maintenance District, and the Consolidated Sewer Maintenance District and its zones, with the exception of the Malibu Mesa Zone, will remain at their Fiscal Year 2002-03 levels.

Implementation of Strategic Plan Goals

This action is consistent with the County Strategic Plan Goal of Fiscal Responsibility as these sewer service charges provide sufficient funds to continue maintaining our sewer system in a safe, effective, and environmentally sound manner. It also satisfies the goal of Service Excellence since maintaining our sewer system protects public health and the environment, which improves the quality of life in the County.

FISCAL IMPACT/FINANCING

There will be no impact to the County's General Fund. Sufficient revenue will be generated to finance the operational costs of the Sewer Maintenance Districts and Zones in Fiscal Year 2003-04.

FACTS AND PROVISIONS/LEGAL REQUIREMENTS

Section 5473.1 of the Health and Safety Code requires that the notice of filing of the Sewer Service Charge Annual Report and of a time and place of hearing thereon be published once a week for two successive weeks in a newspaper of general circulation pursuant to Section 6066 of the Government Code.

Section 5473 of the Health and Safety Code requires that any ordinance or resolution adopted authorizing the collection of charges on the tax roll shall remain in effect until repealed or until changes have been made in the rates.

The enclosed ordinance and Notice of Hearing relating to this matter have been reviewed and approved as to form by County Counsel.

ENVIRONMENTAL DOCUMENTATION

The proposed ordinance is to fund operating expenses to maintain services in existing service areas and is exempt from the California Environmental Quality Act pursuant to the Public Resources Code, Section 21080(b)(8).

IMPACT ON CURRENT SERVICES (OR PROJECTS)

There will be no negative impact on current County services.

The Honorable Board of Supervisors
June 26, 2003
Page 4

CONCLUSION

Please return two approved copies of this letter and the ordinance to Public Works, Waterworks and Sewer Maintenance Division.

Respectfully submitted,

JAMES A NOYES
Director of Public Works

NA:cs
BDLWA.1

Enc.

cc: Chief Administrative Office
County Counsel

County of Los Angeles

Department of Public Works

SEWER SERVICE CHARGE ANNUAL REPORT

FISCAL YEAR 2003-04

LOS ANGELES COUNTY SEWER MAINTENANCE DISTRICTS

TABLE OF CONTENTS

<u>Contents</u>	<u>Page</u>
Introduction	3
Consolidated Sewer Maintenance District	3-4
Marina Sewer Maintenance District	5
Identification of Parcels	5
Listings of Districts and Zones	6-7
Tax Rate Areas	8
Maps	18

County of Los Angeles
Department of Public Works
SEWER SERVICE CHARGE ANNUAL REPORT
FISCAL YEAR 2003-04

LOS ANGELES COUNTY SEWER MAINTENANCE DISTRICTS

INTRODUCTION

The Los Angeles County Sewer Maintenance Districts are made up of the Consolidated Sewer Maintenance District and the Marina del Rey Sewer Maintenance District. Together, the Districts' system serves greater than half a million parcels and a population of approximately 2.3 million people within the unincorporated areas of the County, 40 cities, 2 contract cities, and 9 Tax Zones. The system includes 5,000 miles of sanitary sewers, 151 pump stations, and 4 water pollution control plants. The estimated value of the system is more than \$1.5 billion.

It is essential that operation and maintenance of these sewage collection and treatment systems be continued without interruption to protect public health and safety. Necessary funding must be available to pay the costs of repairing and cleaning sewers, operating pumping stations and water pollution control plants, and to provide ongoing preventive maintenance of the systems.

In July 1978, your Board adopted ordinances to collect the necessary funding for the Sewer Maintenance Districts, including the Zones within the Consolidated Sewer Maintenance District, on the tax roll as a sewer service charge.

CONSOLIDATED SEWER MAINTENANCE DISTRICT

The existing sewer service charges for the Consolidated Sewer Maintenance District are established in Los Angeles County Code, Volume 5, Title 20, Division 3, Chapter 20.40, as amended. The annual sewer service charge levied upon each parcel of real property within the District is computed by multiplying the basic annual sewage unit charge by the number of sewage units represented by the current land use, as shown in Table A of the ordinance.

The basic annual sewage unit charge for each sewage unit is \$17.50. Each single-family residence within the District will be assessed an annual sewer service charge of \$17.50. Multiple residential, certain commercial, and industrial properties are assessed higher amounts based on their Assessor Use Codes.

There is also a \$4 per sewage unit annual charge to fund the Accumulative Capital Outlay Fund which was first established in 1987. This charge allows the District to accumulate funds to pay for pipe replacement, relief sewers, and major improvements to sewage pumping stations that may become necessary.

In addition to the above assessments, there are certain areas established as Zones within the District that are charged additional fees. These Zone fees fund special services and/or facilities required by the Zone in addition to those provided generally throughout the District. There are currently nine Zones within the Consolidated Sewer Maintenance District, however, the majority of the District's territory is not included within the Zones.

The proposed service charges for each Zone for Fiscal Year 2003-04 are the same as Fiscal Year 2002-03 except for those shown in bold:

	<u>CURRENT 2002-03</u>	<u>PROPOSED 2003-04</u>
Aneta Zone	\$40/sewage unit	\$20/sewage unit (a)
Brassie Lane Zone	\$15.86/sewage unit	\$15.86/sewage unit
Foxpark Drive Zone	\$ 65/sewage unit (improved pcl only)	\$65/sewage unit (improved pcl only)
Lake Hughes Zone	\$593/sewage unit (improved pcl only)	\$593/sewage unit (improved pcl only)
Malibu Zone	\$1,408/sewage unit (b) (improved pcl only)	\$1,408/sewage unit (b) (improved pcl only)
Malibu Mesa Zone	\$502.40/sewage unit (c) \$877.40/sewage unit (d)	\$628/sewage unit (c)
Summit Road Zone	\$ 15.26/sewage unit	\$15.26/sewage unit
Topanga Zone	\$416.40/sewage unit (e) (improved pcl only)	\$401.60/sewage unit (e) (improved pcl only)
Trancas Zone	\$2,039/sewage unit (f) (improved pcl only)	\$2,039/sewage unit (f) (improved pcl only)

See pages 6 and 7 for descriptions of District and Zone functions.

NOTES:

- a) This reflects the proposed reduction of \$20, from \$40 to \$20 per sewage unit for the Aneta Zone.
- b) This includes both the base rate of \$1,189 for operational costs and the 15-year \$219 charge (from Fiscal Year 2001-02 to 2016-17) for repayment of a \$422,042 State Revolving Fund loan to help finance rehabilitation of the treatment plant.
- c) This is the basic zone Sewer Service Charge for all properties, which will increase by \$125.60 in Fiscal Year 2003-04 to \$628, which was approved by the Board on May 28, 2002.
- d) For property owners making an additional construction loan payment (\$375/sewage unit) ending Fiscal Year 2002-03.
- e) This reflects the proposed reduction of \$14.80, from \$416.40 to \$401.60 per sewage unit, for the Topanga Zone.
- f) This includes the base rate of \$1,078 for operational costs; the 10-year \$207 charge (from Fiscal Year 2000-01 to 2009-10) for repayment of a \$410,000 loan for emergency repairs and project engineering for treatment plant rehabilitation; and the 10-year \$754 charge (from Fiscal Year 2001-02 to 2010-11) for repayment of a \$1,498,000 loan for the construction cost of treatment plant rehabilitation.

MARINA SEWER MAINTENANCE DISTRICT

The existing sewer service charge for the Marina Sewer Maintenance District is established in Los Angeles County Code, Volume 5, Title 20, Division 3, Chapter 20.44. Under the provisions of this ordinance, the annual sewer service charge levied upon each possessory interest within the District is computed by multiplying the amount of the sewage unit charge by the number of sewage units for the current land use as shown in Table A of the ordinance. The basic annual sewage unit charge for each sewage unit is currently \$120, and will remain the same for Fiscal Year 2003-04.

IDENTIFICATION OF PARCELS TO BE CHARGED

All parcels of real property within the 2002-03 Tax Rate Areas (TRA'S) listed in pages 8 through 17, and more particularly described in maps prepared in accordance with Section 327, Revenue and Taxation Code, and on file in the office of the County Assessor, will be charged the appropriate sewer service charge.

SEWER MAINTENANCE DISTRICTS AND ZONES

<u>DISTRICT OR ZONE</u>	<u>SUPERVISORIAL DISTRICT</u>	<u>FUNCTION</u>
CONSOLIDATED SMD	1,2,3,4,5	Operate and maintain complete sewer system; encompasses 99% of total system.
Aneta Zone	2	Pay disposal costs to City of Los Angeles.
Brassie Lane Zone	5	Pay disposal costs to City of La Verne.
Foxpark Drive Zone	1	Pay disposal costs to City of Pomona.
Lake Hughes Zone	5	Provide funds for the operation and maintenance of the water pollution control plant.
Malibu Zone	3	Provide funds for the operation, maintenance, and rehabilitation of the water pollution control plant.
Malibu Mesa Zone	3	Provide funds for the operation, maintenance, and rehabilitation of the water pollution control plant.
Summit Road Zone	5	Pay disposal costs to City of La Verne.
Topanga Zone	3	Pay disposal costs to Las Virgenes Municipal Water District.
Trancas Zone	3	Provide funds for the operation, maintenance, and rehabilitation of the water pollution control plant.

Accumulative Capital

1,2,3,4,5

Provide for necessary pipe
Outlay Fund replacement,
relief sewers and major
improvements to sewage
pump stations.

MARINA SMD

4

Operate and maintain
complete sewer system.
Has contractual obligation
with City of Los Angeles to
pay for disposal of sewage
generated within the
Marina del Rey complex.

BDL1WA.a

SEWER MAINTENANCE - TAX RATE AREA REPORT

L.A. COUNTY PUBLIC WORKS DEPARTMENT
DATE COMPILED: JAN 10, 2002
RUN DATE: 02/26/03 TIME: 14:30:36

ACCT NO AGENCY NAME

03900

CONSOLIDATED SEWER MAINT DIST

00057	00058	00059	00075	00076	00077	00078	00082	00083	00084	00085	00086	00087	00088	00090
00091	00093	00094	00096	00097	00098	00099	00104	00106	00108	00112	00113	00122	00123	00090
00124	00127	00128	00130	00139	00141	00142	00147	00148	00150	00153	00154	00155	00156	00124
00162	00165	00166	00167	00175	00176	00177	00177	00178	00185	00186	00187	00188	00191	00157
00196	00205	00222	00223	00225	00226	00229	00230	00233	00234	00241	00243	00245	00248	00250
00253	00254	00258	00261	00264	00266	00274	00281	00282	00325	00331	00333	00333	00334	00338
00353	00354	00355	00356	00357	00358	00359	00360	00364	00373	00382	00386	00395	00397	00405
00406	00407	00412	00416	00417	00418	00420	00421	00429	00430	00431	00432	00434	00436	00437
00438	00439	00441	00442	00443	00444	00445	00446	00447	00448	00449	00450	00451	00455	00458
00459	00466	00474	00475	00476	00477	00485	00493	00494	00496	00499	00503	00505	00506	00507
00508	00511	00521	00522	00523	00525	00531	00532	00536	00535	00536	00537	00553	00554	00555
00558	00563	00566	00567	00569	00575	00577	00584	00585	00600	00602	00607	00612	00613	00614
00625	00629	00631	00634	00635	00636	00637	00638	00639	00640	00642	00643	00650	00666	00669
00677	00682	00683	00687	00692	00693	00694	00695	00698	00699	00711	00714	00715	00716	00723
00724	00728	00730	00731	00732	00736	00737	00739	00740	00744	00749	00750	00752	00753	00754
00756	00757	00761	00762	00763	00764	00765	00767	00768	00774	00780	00782	00783	00786	00791
00793	00800	00801	00802	00803	00815	00821	00824	00826	00832	00834	00835	00836	00837	00840
00845	00846	00850	00854	00855	00859	00863	00869	00870	00871	00872	00873	00874	00875	00883
00884	00886	00888	00889	00890	00891	00894	00897	00900	00906	00908	00918	00920	00931	00932
00933	00935	00936	00938	00940	00945	00947	00949	00952	00954	00955	00956	00964	00965	00968
00969	00977	00984	00985	00986	00989	00990	00991	00992	00996	00999	01000	01003	01005	01007
01009	01010	01011	01014	01015	01016	01018	01019	01020	01021	01023	01024	01025	01026	01028
01029	01030	01032	01033	01036	01037	01038	01040	01041	01043	01046	01045	01046	01047	01048
01050	01052	01058	01062	01063	01064	01065	01067	01068	01069	01073	01075	01077	01079	01080
01081	01083	01084	01087	01088	01089	01090	01091	01093	01097	01099	01100	01101	01102	01104
01105	01108	01109	01110	01111	01112	01113	01114	01115	01116	01118	01119	01120	01121	01123
01126	01127	01130	01132	01133	01134	01135	01136	01137	01138	01139	01142	01144	01146	01147
01148	01150	01153	01157	01158	01160	01161	01163	01164	01165	01166	01169	01170	01173	01175
01176	01177	01179	01180	01182	01183	01185	01187	01188	01190	01191	01192	01193	01194	01197
01198	01200	01202	01206	01207	01208	01209	01211	01213	01214	01217	01218	01220	01221	01225
01226	01228	01229	01230	01232	01237	01237	01240	01242	01243	01246	01247	01248	01249	01251
01252	01253	01255	01256	01257	01260	01261	01263	01264	01265	01267	01268	01269	01270	01276
01278	01281	01298	01301	01304	01308	01308	01309	01310	01311	01312	01314	01317	01318	01323
01324	01325	01327	01328	01331	01332	01334	01335	01336	01338	01340	01345	01346	01347	01350
01352	01358	01359	01369	01370	01371	01372	01373	01375	01376	01380	01381	01383	01384	01385
01386	01387	01389	01395	01396	01397	01398	01401	01404	01406	01409	01410	01411	01412	01413
01416	01417	01421	01423	01424	01425	01426	01427	01430	01434	01436	01437	01438	01442	01445
01446	01453	01464	01466	01467	01470	01473	01474	01476	01481	01482	01486	01488	01495	01497
01498	01501	01504	01511	01516	01518	01519	01520	01524	01526	01530	01533	01534	01535	01538
01539	01548	01549	01552	01553	01557	01558	01560	01561	01563	01565	01566	01568	01574	01575
01576	01577	01578	01580	01582	01583	01584	01585	01586	01587	01588	01589	01592	01593	01594
01595	01597	01599	01600	01601	01602	01604	01605	01607	01609	01610	01611	01613	01615	01616
01618	01619	01620	01621	01623	01624	01625	01627	01628	01630	01632	01633	01635	01638	01639
01640	01641	01644	01647	01658	01659	01661	01669	01670	01671	01674	01677	01681	01684	01685
01640	01701	01707	01708	01710	01715	01719	01720	01727	01728	01733	01734	01735	01736	01737
01740	01741	01745	01752	01754	01759	01760	01760	01761	01762	01763	01764	01765	01767	01769
01770	01774	01775	01779	01781	01782	01783	01784	01784	01785	01804	01811	01824	01827	01827
01820	01829	01830	01831	01849	01852	01853	01854	01855	01856	01857	01858	01859	01861	01869

SEWER MAINTENANCE - TAX RATE AREA REPORT

L.A. COUNTY PUBLIC WORKS DEPARTMENT
DATE COMPILED: JAN 10 2002
RUN DATE: 02/26/03 TIME: 14:30:36

ACCT NO AGENCY NAME

03900

CONSOLIDATED SEWER MAINT DIST

01945	01948	01952	01954	01955	01956	01962	01967	01968	01971	01972	01977	01981	01982	01983
01984	01985	01990	01993	01996	01999	02014	02027	02032	02033	02036	02038	02039	02040	02049
02052	02054	02061	02066	02068	02084	02085	02086	02087	02088	02090	02092	02093	02096	02096
02098	02100	02100	02102	02103	02111	02120	02126	02128	02133	02135	02136	02136	02139	02140
02141	02143	02144	02150	02151	02152	02153	02156	02157	02161	02167	02168	02173	02173	02175
02178	02179	02181	02183	02185	02187	02190	02192	02193	02194	02195	02198	02200	02202	02202
02205	02205	02206	02207	02210	02212	02214	02216	02218	02223	02224	02225	02227	02228	02229
02232	02233	02234	02239	02243	02245	02245	02246	02247	02248	02252	02253	02254	02258	02259
02260	02261	02264	02265	02267	02271	02275	02276	02277	02277	02277	02277	02278	02279	02280
02284	02285	02288	02291	02293	02297	02298	02302	02303	02308	02311	02317	02322	02325	02336
02350	02368	02369	02370	02375	02387	02390	02392	02393	02395	02404	02413	02415	02423	02438
02440	02441	02461	02462	02464	02466	02467	02495	02500	02500	02508	02509	02512	02520	02521
02522	02523	02524	02525	02526	02527	02528	02531	02541	02543	02546	02550	02557	02568	02576
02577	02584	02585	02586	02593	02594	02595	02597	02598	02599	02600	02601	02604	02608	02610
02611	02612	02613	02614	02618	02619	02646	02653	02655	02656	02658	02659	02660	02661	02662
02665	02668	02669	02672	02681	02682	02684	02685	02688	02691	02692	02700	02701	02707	02707
02708	02713	02715	02716	02720	02738	02738	02764	02768	02809	02811	02843	02843	02852	02856
02857	02861	02863	02864	02867	02884	02884	02885	02888	02885	02887	02888	02889	02892	02892
02894	02901	02902	02903	02904	02912	02912	02913	02923	02924	02929	02933	02935	02937	02939
02940	02941	02943	02946	02946	02947	02948	02949	02951	02952	02956	02957	02957	02967	02970
02971	02973	02976	02979	02981	02982	02987	02988	02989	02995	03002	03006	03016	03017	03018
03026	03033	03036	03038	03043	03044	03061	03063	03071	03074	03075	03076	03078	03080	03084
03097	03108	03109	03110	03113	03122	03123	03125	03157	03158	03161	03167	03179	03209	03209
03213	03214	03217	03219	03222	03238	03238	03225	03226	03227	03232	03234	03235	03237	03238
03243	03243	03256	03261	03272	03280	03281	03290	03348	03351	03352	03353	03354	03358	03362
03329	03335	03335	03336	03338	03340	03341	03346	03347	03351	03396	03398	03399	03402	03404
03363	03363	03366	03368	03369	03371	03377	03386	03387	03388	03427	03430	03432	03440	03444
03406	03407	03408	03413	03415	03416	03418	03422	03423	03426	03427	03430	03432	03440	03444
03448	03452	03453	03461	03462	03465	03466	03473	03474	03476	03488	03490	03500	03503	03508
03511	03513	03516	03517	03518	03523	03524	03526	03527	03528	03547	03551	03553	03554	03555
03536	03537	03538	03539	03540	03541	03542	03543	03544	03546	03547	03548	03550	03551	03552
03554	03556	03558	03563	03564	03565	03566	03567	03568	03568	03572	03576	03578	03579	03580
03581	03583	03585	03600	03603	03604	03605	03606	03607	03608	03609	03611	03615	03618	03625
03633	03634	03635	03637	03637	03642	03643	03644	03645	03650	03652	03656	03657	03662	03668
03677	03681	03682	03687	03688	03696	03697	03698	03699	03700	03701	03702	03703	03704	03705
03706	03707	03719	03725	03732	03733	03739	03740	03741	03742	03744	03745	03747	03753	03754
03758	03763	03767	03771	03773	03777	03778	03780	03781	03782	03783	03784	03785	03786	03788
03789	03791	03797	03798	03801	03803	03806	03807	03808	03809	03811	03812	03813	03819	03821
03822	03823	03824	03825	03826	03836	03837	03839	03843	03844	03845	03846	03847	03848	03849
03853	03855	03881	03888	03889	03890	03895	03896	03897	03899	03900	03902	03905	03906	03907
03908	03909	03910	03911	03912	03913	03962	03964	03972	03973	03976	04002	03944	03945	03948
03987	03988	03990	03991	03992	03993	03996	03997	03997	03997	03997	04003	03978	03984	03985
04029	04030	04038	04043	04052	04055	04060	04062	04066	04070	04092	04093	04012	04013	04013
04121	04122	04123	04126	04127	04129	04130	04131	04132	04133	04135	04136	04141	04141	04142
04145	04149	04153	04154	04155	04156	04156	04160	04167	04170	04172	04175	04177	04179	04179
04185	04191	04195	04196	04230	04238	04240	04241	04242	04244	04245	04248	04249	04250	04266
04267	04268	04269	04270	04271	04272	04273	04276	04276	04284	04290	04292	04293	04294	04299

SEWER MAINTENANCE - TAX RATE AREA REPORT

L.A. COUNTY PUBLIC WORKS DEPARTMENT
DATE COMPILED: JAN 10, 2002
RUN DATE: 02/26/03 TIME: 14:30:36

ACCT NO AGENCY NAME

03900

CONSOLIDATED SEWER MAINT DIST

04296	04297	04316	04317	04338	04357	04380	04398	04422	04441	04462	04483	04524	04582	04608	04647	04816	04874	04935	04975	05062	05098	05127	05166	05184	05290	05332	05358	05396	05434	05471	05535	05585	05613	05635	05671	05700	05717	05779	05815	05845	05908	05942	05992	06020	06040		
04299	04322	04344	04361	04383	04400	04428	04447	04466	04488	04527	04584	04611	04612	04613	04650	04834	04882	04937	04991	05064	05103	05131	05168	05188	05221	05297	05335	05361	05400	05437	05476	05547	05587	05615	05637	05679	05701	05720	05780	05818	05847	05909	05944	05994	06020	06040	
04300	04324	04346	04364	04384	04402	04428	04448	04468	04494	04528	04594	04613	04613	04613	04650	04837	04889	04939	04991	05070	05103	05134	05169	05190	05228	05303	05337	05364	05407	05444	05479	05549	05588	05616	05638	05681	05703	05728	05785	05826	05854	05891	05914	05946	05996	06025	06043
04301	04325	04348	04366	04385	04403	04429	04449	04469	04495	04529	04597	04617	04617	04617	04650	04837	04891	04941	04991	05070	05103	05134	05170	05191	05228	05306	05340	05366	05407	05444	05480	05549	05588	05616	05638	05681	05705	05746	05792	05829	05856	05896	05917	05948	05998	06027	06044
04302	04326	04349	04368	04387	04405	04431	04451	04471	04497	04531	04599	04619	04619	04619	04650	04844	04896	04946	04996	05075	05108	05139	05174	05195	05232	05308	05342	05368	05407	05444	05480	05549	05588	05616	05638	05681	05705	05746	05792	05829	05856	05897	05918	05949	05999	06028	06045
04303	04327	04350	04369	04388	04406	04432	04452	04472	04498	04532	04600	04620	04620	04620	04650	04844	04896	04946	04996	05075	05108	05139	05174	05195	05232	05308	05342	05368	05407	05444	05480	05549	05588	05616	05638	05681	05705	05746	05792	05829	05856	05897	05918	05949	05999	06028	06045
04304	04328	04351	04370	04389	04407	04433	04453	04473	04500	04534	04602	04622	04622	04622	04650	04844	04896	04946	04996	05075	05108	05139	05174	05195	05232	05308	05342	05368	05407	05444	05480	05549	05588	05616	05638	05681	05705	05746	05792	05829	05856	05897	05918	05949	05999	06028	06045
04305	04329	04352	04371	04390	04408	04434	04454	04474	04501	04535	04603	04623	04623	04623	04650	04844	04896	04946	04996	05075	05108	05139	05174	05195	05232	05308	05342	05368	05407	05444	05480	05549	05588	05616	05638	05681	05705	05746	05792	05829	05856	05897	05918	05949	05999	06028	06045
04306	04330	04353	04372	04391	04409	04435	04455	04475	04502	04536	04604	04624	04624	04624	04650	04844	04896	04946	04996	05075	05108	05139	05174	05195	05232	05308	05342	05368	05407	05444	05480	05549	05588	05616	05638	05681	05705	05746	05792	05829	05856	05897	05918	05949	05999	06028	06045
04307	04331	04354	04373	04392	04410	04436	04456	04476	04503	04537	04605	04625	04625	04625	04650	04844	04896	04946	04996	05075	05108	05139	05174	05195	05232	05308	05342	05368	05407	05444	05480	05549	05588	05616	05638	05681	05705	05746	05792	05829	05856	05897	05918	05949	05999	06028	06045
04308	04332	04355	04374	04393	04411	04437	04457	04477	04504	04538	04606	04626	04626	04626	04650	04844	04896	04946	04996	05075	05108	05139	05174	05195	05232	05308	05342	05368	05407	05444	05480	05549	05588	05616	05638	05681	05705	05746	05792	05829	05856	05897	05918	05949	05999	06028	06045
04309	04333	04356	04375	04394	04412	04438	04458	04478	04505	04539	04607	04627	04627	04627	04650	04844	04896	04946	04996	05075	05108	05139	05174	05195	05232	05308	05342	05368	05407	05444	05480	05549	05588	05616	05638	05681	05705	05746	05792	05829	05856	05897	05918	05949	05999	06028	06045
04310	04334	04357	04376	04395	04413	04439	04459	04479	04506	04540	04608	04628	04628	04628	04650	04844	04896	04946	04996	05075	05108	05139	05174	05195	05232	05308	05342	05368	05407	05444	05480	05549	05588	05616	05638	05681	05705	05746	05792	05829	05856	05897	05918	05949	05999	06028	06045
04311	04335	04358	04377	04396	04414	04440	04460	04480	04507	04541	04609	04629	04629	04629	04650	04844	04896	04946	04996	05075	05108	05139	05174	05195	05232	05308	05342	05368	05407	05444	05480	05549	05588	05616	05638	05681	05705	05746	05792	05829	05856	05897	05918	05949	05999	06028	06045
04312	04336	04359	04378	04397	04415	04441	04461	04481	04508	04542	04610	04630	04630	04630	04650	04844	04896	04946	04996	05075	05108	05139	05174	05195	05232	05308	05342	05368	05407	05444	05480	05549	05588	05616	05638	05681	05705	05746	05792	05829	05856	05897	05918	05949	05999	06028	06045
04313	04337	04360	04379	04398	04416	04442	04462	04482	04509	04543	04611	04631	04631	04631	04650	04844	04896	04946	04996	05075	05108	05139	05174	05195	05232	05308	05342	05368	05407	05444	05480	05549	05588	05616	05638	05681	05705	05746	05792	05829	05856	05897	05918	05949	05999	06028	06045
04314	04338	04361	04380	04399	04417	04443	04463	04483	04510	04544	04612	04632	04632	04632	04650	04844	04896	04946	04996	05075	05108	05139	05174	05195	05232	05308	05342	05368	05407	05444	05480	05549	05588	05616	05638	05681	05705	05746	05792	05829	05856	05897	05918	05949	05999	06028	06045
04315	04339	04362	04381	04400	04418	04444	04464	04484	04511	04545	04613	04633	04633	04633	04650	04844	04896	04946	04996	05075	05108	05139	05174	05195	05232	05308	05342	05368	05407	05444	05480	05549	05588	05616	05638	05681	05705	05746	05792	05829	05856	05897	05918	05949	05999	06028	06045
04316	04340	04363	04382	04401	04419	04445	04465	04485	04512	04546	04614	04634	04634	04634	04650	04844	04896	04946	04996	05075	05108	05139	05174	05195	05232	05308	05342	05368	05407	05444	05480	05549	05588	05616	05638	05681	05705	05746	05792	05829	05856	05897	05918	05949	05999	06028	06045
04317	04341	04364	04383	04402	04420	04446	04466	04486	04513	04547	04615	04635	04635	04635	04650	04844	04896	04946	04996	05075	05108	05139	05174	05195	05232	05308	05342	05368	05407	05444	05480	05549	05588	05616	05638	05681	05705	05746	05792	05829	05856	05897	05918	05949	05999	06028	06045
04318	04342	04365	04384	04403	04421	04447	04467	04487	04514	04548	04616	04636	04636	04636	04650	04844	04896	04946	04996	05075	05108	05139	05174	05195	05232	05308	05342	05368	05407	05444	05480	05549	05588	05616	05638	05681	05705	05746	05792	05829	05856	05897	05918	05949	05999	06028	06045
04319	04343	04366	04385	04404	04422	04448	04468	04488	04515	04549	04617	04637	04637	04637	04650	04844	04896	04946	04996	05075	05108	05139	05174	05195	05232	05308	05342	05368	05407	05444	05480	05549	05588	05616	05638	05681	05705	05746	05792	05829	05856	05897	05918	05949	05999	06028	06045
04320	04344	04367	04386	04405	04423	04449	04469	04489	04516	04550	04618	04638	04638	04638	04650	04844	04896	04946	04996	05075	05108	05139	05174	05195	05232	05308	05342	05368	05407	05444	05480	05549	05588	05616	05638	05681	05705	05746	05792	05829	05856	05897	05918	05949	05999	06028	06045
04321	04345	04368	04387	04406	04424	04450	04470	04490	04517	04551	04619	04639	04639	04639	04650	04844	04896	04946	04996	05075	05108	05139	05174	05195	05232	05308	05342	05368	05407	05444	05480	05549	05588	05616	05638	05681	05705	05746	05792	05829	05856	05897	05918	05949	05999	06028	06045
04322	04346	04369	04388	04407	04425	04451	04471	04491	04518	04552	04620	04640	04640	04640	04650	04844	04896	04946	04996	05075	05108	05139	05174	05195	05232	05308	05342	05368	05407	05444	05480	05549	05588	05616	05638	05681	05705	05746	05792	05829	05856						

SEWER MAINTENANCE - TAX RATE AREA REPORT

L.A. COUNTY PUBLIC WORKS DEPARTMENT
DATE COMPILED: JAN 10 2002
RUN DATE: 02/26/03 TIME: 14:30:36

ACCT NO AGENCY NAME

03900

CONSOLIDATED SEWER MAINT DIST

06067	06068	06070	06077	06079	06083	06084	06085	06088	06093	06096	06100	06104	06105	06106
06110	06114	06116	06117	06119	06122	06124	06129	06130	06132	06133	06140	06141	06142	06143
06147	06158	06159	06171	06176	06181	06185	06193	06195	06198	06199	06223	06226	06237	06238
06240	06248	06249	06253	06255	06256	06257	06261	06262	06263	06264	06266	06269	06270	06271
06272	06273	06274	06278	06279	06285	06286	06288	06289	06292	06296	06303	06309	06310	06316
06318	06319	06321	06323	06324	06327	06330	06343	06350	06351	06354	06355	06357	06360	06370
06371	06373	06374	06375	06378	06389	06390	06392	06393	06394	06395	06396	06397	06399	06406
06408	06430	06412	06414	06419	06423	06425	06427	06430	06431	06432	06433	06434	06435	06439
06441	06445	06446	06447	06451	06454	06457	06458	06459	06462	06466	06468	06477	06478	06480
06481	06484	06485	06487	06488	06490	06491	06492	06494	06495	06501	06504	06507	06509	06511
06513	06516	06518	06519	06520	06521	06522	06526	06530	06532	06536	06537	06538	06544	06545
06548	06556	06558	06560	06563	06564	06567	06573	06576	06579	06582	06583	06584	06585	06589
06593	06596	06597	06600	06602	06604	06608	06611	06624	06633	06637	06638	06644	06647	06648
06662	06663	06664	06665	06667	06671	06673	06674	06684	06688	06689	06690	06693	06694	06695
06697	06699	06700	06701	06702	06703	06704	06706	06707	06708	06712	06713	06717	06721	06724
06726	06727	06731	06734	06735	06746	06747	06750	06751	06757	06767	06772	06773	06777	06779
06780	06781	06783	06785	06794	06795	06799	06800	06802	06805	06818	06821	06834	06837	06840
06841	06842	06843	06846	06847	06848	06849	06850	06856	06857	06858	06859	06863	06863	06865
06866	06867	06869	06871	06875	06878	06879	06880	06882	06883	06885	06887	06888	06890	06891
06892	06893	06894	06895	06896	06897	06898	06899	06902	06904	06907	06908	06910	06911	06912
06913	06914	06915	06916	06918	06919	06920	06922	06928	06929	06934	06935	06936	06941	06945
06950	06951	06955	06956	06959	06960	06966	06972	06973	06978	06983	06990	07007	07017	07018
07056	07057	07058	07064	07073	07077	07079	07083	07085	07087	07088	07090	07093	07094	07095
07097	07098	07099	07100	07103	07105	07106	07108	07109	07110	07112	07113	07114	07115	07116
07118	07119	07120	07122	07123	07124	07125	07127	07128	07129	07132	07135	07139	07142	07143
07144	07145	07147	07151	07155	07156	07158	07164	07169	07172	07175	07177	07179	07180	07188
07191	07192	07193	07194	07200	07201	07202	07203	07205	07209	07214	07221	07228	07229	07230
07235	07236	07237	07238	07240	07241	07242	07243	07244	07248	07249	07251	07255	07260	07262
07263	07264	07265	07268	07269	07271	07272	07273	07274	07277	07278	07283	07284	07285	07286
07287	07288	07289	07290	07291	07293	07294	07296	07297	07298	07300	07302	07306	07307	07309
07311	07315	07317	07318	07324	07326	07330	07331	07335	07339	07341	07343	07346	07348	07349
07350	07351	07352	07354	07357	07358	07359	07361	07362	07363	07367	07368	07369	07371	07372
07373	07379	07380	07382	07383	07384	07385	07386	07390	07394	07397	07398	07401	07405	07410
07411	07412	07414	07422	07425	07437	07439	07441	07447	07451	07461	07462	07468	07469	07473
07477	07485	07488	07492	07493	07494	07502	07508	07509	07510	07511	07512	07513	07523	07524
07528	07529	07530	07531	07532	07533	07536	07549	07550	07551	07555	07556	07562	07567	07568
07569	07571	07572	07573	07575	07577	07578	07580	07581	07584	07585	07586	07590	07591	07593
07595	07596	07597	07598	07599	07601	07603	07604	07606	07607	07608	07609	07610	07617	07623
07627	07634	07635	07637	07638	07639	07642	07643	07645	07648	07649	07650	07651	07652	07653
07654	07655	07656	07657	07658	07662	07670	07672	07674	07675	07677	07678	07679	07680	07681
07682	07684	07685	07688	07692	07696	07697	07698	07699	07706	07708	07709	07710	07711	07712
07713	07714	07715	07716	07718	07719	07722	07728	07728	07736	07737	07738	07739	07740	07741
07820	07831	07835	07842	07847	07848	07849	07864	07867	07870	07874	07875	07879	07893	07894
07896	07897	07898	07908	07920	07922	07924	07925	07926	07933	07935	07942	07944	07945	07946
07948	07957	07958	07960	07961	07963	07967	07973	07977	07978	07979	07983	07984	07984	07985
07986	07987	07991	07992	07993	07995	07997	08000	08001	08002	08015	08016	08020	08026	08028
08029	08031	08032	08033	08034	08035	08036	08037	08038	08041	08042	08044	08052	08057	08062
08067	08068	08069	08071	08073	08082	08086	08087	08088	08089	08091	08092	08093	08094	08095

SEWER MAINTENANCE - TAX RATE AREA REPORT

L.A. COUNTY PUBLIC WORKS DEPARTMENT
DATE COMPILED: JAN 10, 2002
RUN DATE: 02/26/03 TIME: 14:30:36

AGENCY NAME

ACCT NO
03900

CONOLIDATED	SEWER	MAINT	DIST	08106	08107	08108	08109	08111	08114	08115	08116			
08096	08099	08101	08102	08103	08104	08105	08106	08107	08108	08109	08111	08114	08115	08116
08117	08118	08119	08121	08122	08123	08124	08125	08126	08127	08128	08129	08131	08132	08133
08138	08139	08140	08141	08142	08143	08144	08145	08146	08147	08148	08149	08151	08152	08153
08154	08155	08156	08158	08159	08160	08161	08162	08163	08164	08165	08166	08167	08168	08169
08179	08181	08182	08183	08184	08185	08186	08187	08188	08189	08190	08191	08192	08193	08194
08210	08211	08212	08213	08214	08215	08216	08217	08218	08219	08220	08221	08222	08223	08224
08232	08233	08234	08235	08236	08237	08238	08239	08240	08241	08242	08243	08244	08245	08246
08253	08254	08255	08256	08257	08258	08259	08260	08261	08262	08263	08264	08265	08266	08267
08274	08275	08276	08277	08278	08279	08280	08281	08282	08283	08284	08285	08286	08287	08288
08296	08297	08298	08299	08300	08301	08302	08303	08304	08305	08306	08307	08308	08309	08310
08323	08324	08325	08326	08327	08328	08329	08330	08331	08332	08333	08334	08335	08336	08337
08347	08348	08349	08350	08351	08352	08353	08354	08355	08356	08357	08358	08359	08360	08361
08367	08368	08369	08370	08371	08372	08373	08374	08375	08376	08377	08378	08379	08380	08381
08382	08383	08384	08388	08389	08390	08391	08392	08393	08394	08395	08396	08397	08398	08399
08434	08435	08436	08439	08440	08441	08442	08443	08444	08445	08446	08447	08448	08449	08450
08456	08457	08458	08459	08460	08461	08462	08463	08464	08465	08466	08467	08468	08469	08470
08482	08483	08484	08487	08488	08489	08490	08491	08492	08493	08494	08495	08496	08497	08498
08501	08502	08503	08504	08505	08506	08507	08508	08509	08510	08511	08512	08513	08514	08515
08519	08521	08522	08523	08524	08525	08526	08527	08528	08529	08530	08531	08532	08533	08534
08557	08558	08559	08560	08561	08562	08563	08564	08565	08566	08567	08568	08569	08570	08571
08592	08593	08594	08595	08596	08597	08598	08599	08600	08601	08602	08603	08604	08605	08606
08651	08652	08653	08654	08655	08656	08657	08658	08659	08660	08661	08662	08663	08664	08665
08676	08677	08678	08679	08680	08681	08682	08683	08684	08685	08686	08687	08688	08689	08690
08716	08717	08718	08719	08720	08721	08722	08723	08724	08725	08726	08727	08728	08729	08730
08807	08808	08809	08810	08811	08812	08813	08814	08815	08816	08817	08818	08819	08820	08821
08866	08867	08868	08869	08870	08871	08872	08873	08874	08875	08876	08877	08878	08879	08880
09003	09004	09005	09006	09007	09008	09009	09010	09011	09012	09013	09014	09015	09016	09017
09034	09035	09036	09037	09038	09039	09040	09041	09042	09043	09044	09045	09046	09047	09048
09052	09053	09054	09055	09056	09057	09058	09059	09060	09061	09062	09063	09064	09065	09066
09070	09071	09072	09073	09074	09075	09076	09077	09078	09079	09080	09081	09082	09083	09084
09092	09093	09094	09095	09096	09097	09098	09099	09100	09101	09102	09103	09104	09105	09106
09109	09110	09111	09112	09113	09114	09115	09116	09117	09118	09119	09120	09121	09122	09123
09196	09197	09198	09199	09200	09201	09202	09203	09204	09205	09206	09207	09208	09209	09210
09226	09227	09228	09229	09230	09231	09232	09233	09234	09235	09236	09237	09238	09239	09240
09261	09262	09263	09264	09265	09266	09267	09268	09269	09270	09271	09272	09273	09274	09275
09301	09302	09303	09304	09305	09306	09307	09308	09309	09310	09311	09312	09313	09314	09315
09339	09340	09341	09342	09343	09344	09345	09346	09347	09348	09349	09350	09351	09352	09353
09363	09364	09365	09366	09367	09368	09369	09370	09371	09372	09373	09374	09375	09376	09377
09395	09396	09397	09398	09399	09400	09401	09402	09403	09404	09405	09406	09407	09408	09409
09432	09433	09434	09435	09436	09437	09438	09439	09440	09441	09442	09443	09444	09445	09446
09466	09467	09468	09469	09470	09471	09472	09473	09474	09475	09476	09477	09478	09479	09480
09523	09524	09525	09526	09527	09528	09529	09530	09531	09532	09533	09534	09535	09536	09537
09568	09569	09570	09571	09572	09573	09574	09575	09576	09577	09578	09579	09580	09581	09582
09612	09613	09614	09615	09616	09617	09618	09619	09620	09621	09622	09623	09624	09625	09626
09634	09635	09636	09637	09638	09639	09640	09641	09642	09643	09644	09645	09646	09647	09648
09687	09688	09689	09690	09691	09692	09693	09694	09695	09696	09697	09698	09699	09700	09701
09716	09717	09718	09719	09720	09721	09722	09723	09724	09725	09726	09727	09728	09729	09730
09741	09742	09743	09744	09745	09746	09747	09748	09749	09750	09751	09752	09753	09754	09755
09766	09767	09768	09769	09770	09771	09772	09773	09774	09775	09776	09777	09778	09779	09780

SEWER MAINTENANCE - TAX RATE AREA REPORT

L-A. COUNTY PUBLIC WORKS DEPARTMENT
DATE COMPILED: JAN 10, 2002
RUN DATE: 02/26/03 TIME: 14:30:36

ACCT NO AGENCY NAME

CONSOLIDATED SEWER MAINT DIST

03900	09785	09786	09787	09789	09790	09793	09794	09797	09798	09799	09802	09804	09807	09809	09810
	09816	09824	09826	09827	09828	09834	09841	09852	09853	09857	09864	09865	09867	09869	09872
	09878	09924	09927	09929	09930	09932	09933	09934	09952	09965	09976	09981	09982	09984	09987
	09988	09991	09994	09995	09997	10000	10003	10007	10028	10049	10050	10051	10052	10053	10056
	10017	10018	10019	10021	10022	10023	10025	10027	10047	10068	10074	10075	10076	10077	10078
	10037	10039	10040	10041	10042	10044	10045	10046	10069	10071	10074	10091	10092	10093	10094
	10054	10055	10056	10058	10059	10060	10061	10066	10087	10089	10090	10091	10092	10093	10094
	10079	10080	10082	10083	10084	10085	10086	10087	10088	10089	10090	10091	10092	10093	10094
	10095	10096	10097	10099	10100	10103	10104	10105	10106	10107	10108	10109	10110	10111	10112
	10113	10114	10115	10116	10117	10118	10119	10120	10121	10123	10124	10125	10126	10127	10128
	10129	10130	10131	10132	10133	10134	10135	10136	10137	10138	10139	10140	10141	10142	10144
	10145	10146	10147	10148	10149	10150	10152	10153	10155	10158	10159	10160	10161	10162	10164
	10165	10166	10167	10168	10171	10172	10173	10174	10175	10176	10177	10178	10179	10180	10181
	10182	10183	10184	10186	10188	10190	10200	10204	10208	10220	10222	10226	10232	10234	10237
	10241	10259	10264	10265	10269	10270	10272	10274	10275	10281	10282	10285	10287	10293	10294
	10295	10297	10301	10302	10303	10305	10307	10308	10315	10318	10319	10321	10322	10325	10328
	10331	10333	10334	10339	10340	10344	10349	10350	10354	10355	10363	10364	10365	10366	10367
	10368	10369	10371	10372	10373	10374	10376	10377	10378	10379	10380	10382	10383	10386	10387
	10388	10389	10391	10392	10393	10394	10396	10399	10400	10401	10402	10403	10404	10411	10415
	10416	10418	10419	10421	10424	10425	10429	10430	10436	10440	10447	10448	10449	10455	10456
	10459	10461	10462	10463	10464	10465	10466	10469	10471	10474	10476	10477	10482	10484	10491
	10495	10496	10497	10498	10499	10509	10518	10521	10522	10523	10529	10530	10531	10532	10533
	10535	10536	10541	10542	10543	10544	10545	10547	10549	10552	10553	10555	10556	10557	10558
	10560	10562	10563	10564	10566	10568	10570	10571	10572	10573	10574	10575	10576	10582	10583
	10584	10587	10588	10590	10600	10601	10604	10605	10615	10617	10622	10625	10634	10635	10636
	10637	10638	10645	10647	10648	10650	10651	10652	10653	10657	10664	10665	10666	10669	10670
	10671	10672	10694	10695	10696	10698	10721	10723	10724	10725	10727	10728	10729	10730	10731
	10732	10733	10734	10735	10736	10737	10738	10739	10740	10741	10742	10743	10744	10746	10747
	10748	10749	10750	10751	10752	10753	10754	10755	10756	10757	10758	10759	10760	10761	10762
	10763	10764	10765	10766	10769	10771	10773	10776	10780	10781	10791	10793	10794	10795	10796
	10797	10798	10799	10800	10802	10804	10805	10807	10808	10809	10810	10811	10814	10815	10816
	10817	10818	10819	10820	10823	10829	10830	10834	10841	10842	10843	10844	10856	10858	10861
	10862	10880	10881	10885	10887	10888	10889	10892	10893	10894	10896	10897	10898	10899	10900
	10902	10904	10905	10909	10910	10911	10912	10913	10914	10915	10918	10923	10924	10926	10927
	10934	10936	10937	10939	10940	10944	10947	10948	10949	10950	10951	10952	10955	10956	10957
	10958	10959	10960	10961	10962	10963	10964	10965	10968	10969	10970	10971	10972	10973	10974
	10975	10976	10978	10980	10981	10982	10984	10985	10987	10988	10989	10991	10994	10995	10998
	10999	11000	11001	11002	11003	11004	11006	11007	11009	11010	11011	11012	11013	11014	11025
	11026	11027	11030	11031	11032	11033	11035	11036	11037	11038	11039	11040	11042	11046	11048
	11050	11054	11055	11057	11058	11060	11061	11063	11064	11065	11066	11071	11075	11077	11079
	11080	11082	11083	11084	11086	11090	11091	11093	11094	11095	11102	11104	11109	11114	11115
	11116	11117	11118	11119	11120	11128	11129	11151	11159	11161	11168	11172	11175	11177	11186
	11187	11188	11189	11197	11200	11201	11205	11211	11213	11214	11216	11217	11225	11227	11230
	11231	11232	11233	11234	11235	11236	11240	11241	11242	11243	11244	11245	11246	11247	11251
	11256	11259	11260	11261	11262	11263	11266	11272	11274	11276	11277	11278	11280	11281	11283
	11284	11285	11288	11289	11290	11298	11315	11317	11318	11324	11325	11331	11336	11341	11355
	11356	11361	11362	11367	11370	11374	11379	11380	11386	11387	11388	11391	11398	11410	11411

SEWER MAINTENANCE - TAX RATE AREA REPORT

L.A. COUNTY PUBLIC WORKS DEPARTMENT
DATE COMPILED: JAN 10, 2002
RUN DATE: 02/26/03 TIME: 14:30:36

ACCT NO
03900

AGENCY NAME

ACCT NO	AGENCY NAME	CONSOLIDATED SEWER MAINT DIST	11412	11413	11414	11415	11416	11418	11426	11430	11433	11435	11436	11439	11441	11442
11412		11418	11416	11415	11414	11415	11416	11418	11426	11430	11433	11435	11436	11439	11441	11442
11443		11455	11454	11453	11448	11453	11454	11455	11458	11460	11462	11466	11467	11468	11469	11470
11471		11473	11474	11475	11476	11477	11475	11480	11481	11486	11486	11487	11488	11489	11490	11492
11496		11498	11500	11501	11505	11507	11505	11508	11509	11512	11512	11513	11514	11520	11522	11523
11524		11526	11527	11529	11533	11534	11533	11535	11536	11537	11537	11538	11539	11540	11542	11542
11544		11546	11547	11548	11550	11551	11548	11554	11551	11552	11552	11562	11563	11567	11568	11587
11571		11573	11574	11575	11576	11577	11576	11598	11580	11582	11582	11583	11584	11585	11586	11587
11589		11591	11592	11593	11594	11596	11593	11598	11599	11600	11601	11601	11602	11603	11614	11615
11617		11621	11622	11623	11624	11628	11623	11628	11629	11633	11634	11634	11635	11646	11648	11649
11650		11651	11654	11655	11656	11657	11655	11658	11657	11666	11667	11667	11668	11670	11675	11682
11683		11685	11686	11687	11688	11690	11688	11690	11691	11694	11697	11698	11699	11700	11702	11704
11710		11713	11714	11715	11716	11717	11716	11717	11720	11721	11730	11733	11738	11740	11742	11745
11755		11758	11759	11760	11761	11762	11760	11761	11769	11771	11791	11792	11793	11794	11795	11796
11797		11798	11799	11800	11801	11802	11801	11802	11803	11805	11806	11807	11808	11809	11810	11811
11812		11813	11814	11815	11820	11821	11820	11821	11822	11825	11845	11846	11848	11851	11855	11864
11869		11871	11872	11874	11875	11876	11875	11876	11877	11882	11882	11884	11890	11894	11896	11897
11898		11899	11900	11901	11902	11903	11902	11903	11905	11907	11909	11911	11912	11913	11914	11915
11916		11917	11918	11919	11920	11921	11920	11921	11939	11940	11947	11949	11950	11952	11953	11954
11955		11958	11960	11963	11965	11966	11965	11966	11971	11973	11981	11981	11982	11983	11984	11995
11959		12000	12001	12002	12003	12004	12003	12004	12005	12007	12013	12013	12014	12015	12018	12020
12021		12022	12023	12026	12027	12028	12027	12028	12032	12034	12035	12036	12042	12042	12043	12045
12083		12084	12085	12087	12088	12089	12088	12089	12066	12070	12074	12076	12077	12080	12081	12082
12156		12159	12160	12163	12164	12165	12164	12165	12121	12125	12131	12136	12137	12138	12139	12152
12176		12177	12178	12180	12182	12183	12182	12183	12184	12185	12189	12191	12192	12193	12199	12200
12201		12204	12205	12206	12207	12208	12207	12208	12210	12211	12212	12212	12212	12213	12216	12227
12268		12269	12270	12275	12279	12280	12279	12280	12284	12286	12288	12288	12288	12295	12302	12303
12304		12305	12307	12312	12315	12317	12315	12317	12318	12319	12320	12321	12322	12325	12326	12327
12332		12333	12334	12335	12336	12337	12336	12337	12338	12339	12340	12341	12342	12343	12345	12346
12347		12348	12349	12350	12351	12352	12351	12352	12353	12354	12355	12356	12357	12358	12360	12361
12362		12363	12364	12365	12366	12367	12366	12367	12368	12369	12370	12371	12372	12373	12375	12376
12377		12381	12387	12388	12389	12390	12389	12390	12395	12396	12400	12401	12402	12403	12405	12405
12408		12412	12413	12414	12416	12417	12416	12417	12419	12419	12421	12422	12423	12425	12426	12427
12428		12429	12430	12431	12432	12433	12432	12433	12443	12445	12455	12456	12456	12462	12467	12468
12469		12470	12476	12477	12479	12480	12479	12480	12481	12482	12483	12487	12496	12497	12498	12499
12503		12514	12515	12517	12523	12526	12523	12526	12527	12528	12539	12539	12539	12538	12539	12540
12542		12543	12544	12549	12551	12552	12552	12552	12555	12556	12556	12558	12558	12561	12562	12563
12564		12565	12566	12567	12568	12569	12568	12569	12570	12571	12576	12578	12580	12581	12582	12583
12585		12586	12587	12588	12589	12590	12589	12590	12596	12597	12604	12605	12606	12608	12609	12610
12613		12618	12619	12620	12621	12622	12621	12622	12623	12624	12625	12627	12628	12629	12630	12631
12634		12637	12639	12640	12642	12643	12642	12643	12645	12645	12648	12649	12650	12651	12652	12653
12654		12655	12656	12657	12658	12659	12658	12659	12661	12662	12664	12665	12666	12667	12669	12670
12671		12672	12673	12674	12675	12676	12675	12676	12677	12678	12687	12687	12687	12688	12689	12690
12729		12732	12733	12734	12735	12736	12735	12736	12739	12745	12746	12747	12747	12751	12754	12755
12761		12762	12763	12764	12765	12766	12765	12766	12770	12771	12772	12772	12772	12783	12786	12787
12791		12794	12796	12797	12798	12800	12799	12800	12805	12813	12814	12816	12817	12818	12828	12830
12834		12836	12837	12838	12840	12843	12840	12843	12844	12845	12857	12859	12876	12884	12886	12887
12908		12916	12917	12920	12921	12928	12922	12928	12931	12934	12951	12952	12953	12954	12956	12957

SEWER MAINTENANCE - TAX RATE AREA REPORT

L.A. COUNTY PUBLIC WORKS DEPARTMENT
 DATE COMPILED: JAN 10, 2002
 RUN DATE: 02/26/03 TIME: 14:30:36

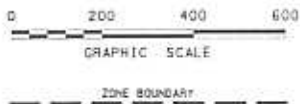
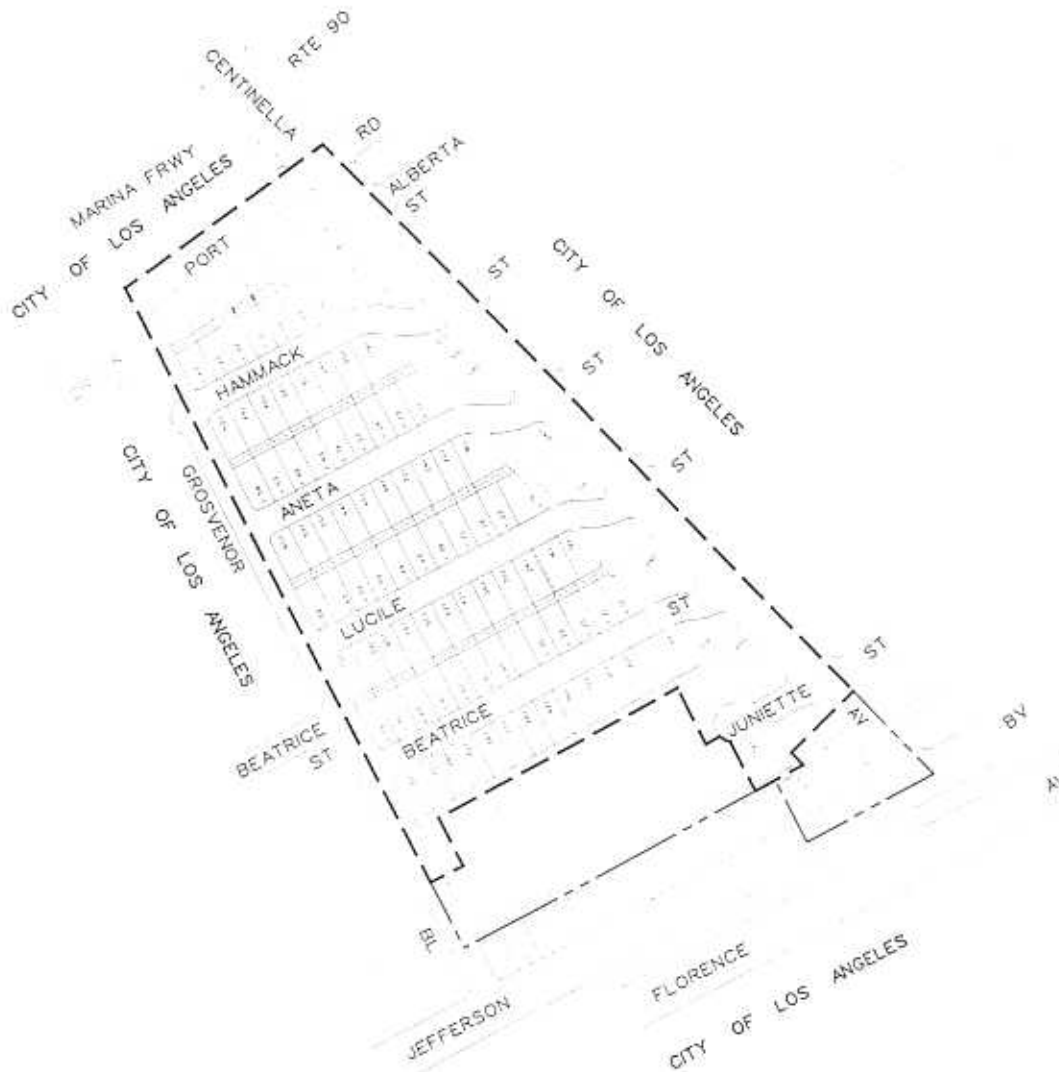
ACCT NO	AGENCY NAME	CONSOLIDATED SEWER MAINT DIST	12958	12960	12961	12962	12963	12965	12966	12967	12970	12971	12972	12973	12974	12975	12976
03900			12977	12978	12979	12980	12981	12982	12983	12984	12987	12988	12989	12990	12992	12993	12995
			13002	13010	13013	13014	13017	13018	13019	13020	13021	13022	13023	13025	13026	13027	13028
			13029	13033	13035	13037	13039	13041	13042	13044	13046	13050	13052	13053	13054	13055	13056
			13057	13058	13059	13061	13071	13073	13074	13075	13078	13079	13081	13083	13084	13085	13086
			13087	13088	13093	13094	13096	13097	13098	13099	13102	13103	13104	13105	13106	13109	13110
			13111	13112	13117	13125	13129	13130	13131	13132	13133	13134	13137	13139	13143	13146	13152
			13153	13155	13157	13158	13159	13164	13165	13167	13173	13175	13186	13187	13189	13201	13203
			13204	13208	13214	13226	13227	13228	13229								
03901		CONSOL SEWER MAINT-TRANCAS ZONE															
			10856	11003	11004												
03902		CONSOL SEWER MAINT-TOPANGA ZONE															
			01438	01516	01535	10419											
03904		CONSOL SEWER MAINT-MALIBU ZONE															
			10861	10862													
03905		CONSOL SEWER MAINT-LA HABRA HTS															
			06004	06037	06038	06043	06044	06057	06058								
03907		CONSOL SEWER MAINT-ANETA ZONE															
			01163	01473	01482	11151											
03909		CONSOL SEWER MAINT-F. F. W. ZONE															
			01166	01179	01185	01193	11982	12071									
03910		CONSOL SEWER MAINT-MALIBU MESA ZN															
			08625	08642	08651	10858	11046	11048	11050								
03912		CONSOL SEWER MAINT-FOXPARK ZN															
			02798														
03913		CONSOL SEWER MAINT-SORENSEN ZN															
			00057	06141	06142	06143											
03914		CONSOL SEWER MAINT-SUMMIT RD ZN															
			02929	05123	06119	12627											

SEWER MAINTENANCE - TAX RATE AREA REPORT

L.A. COUNTY PUBLIC WORKS DEPARTMENT
DATE COMPILED: JAN 10, 2002
RUN DATE: 02/26/03 TIME: 14:30:36

ACCT NO	AGENCY NAME
03915	CONSOL SEWER MAINT-LAKE HUGHES
03917	01858 01859 01861 CONSOL SEWER MAINT-BRASSIE LN ZN
04120	01436 01437 MARINA SEWER MAINT DIST
	00369 01460 01608

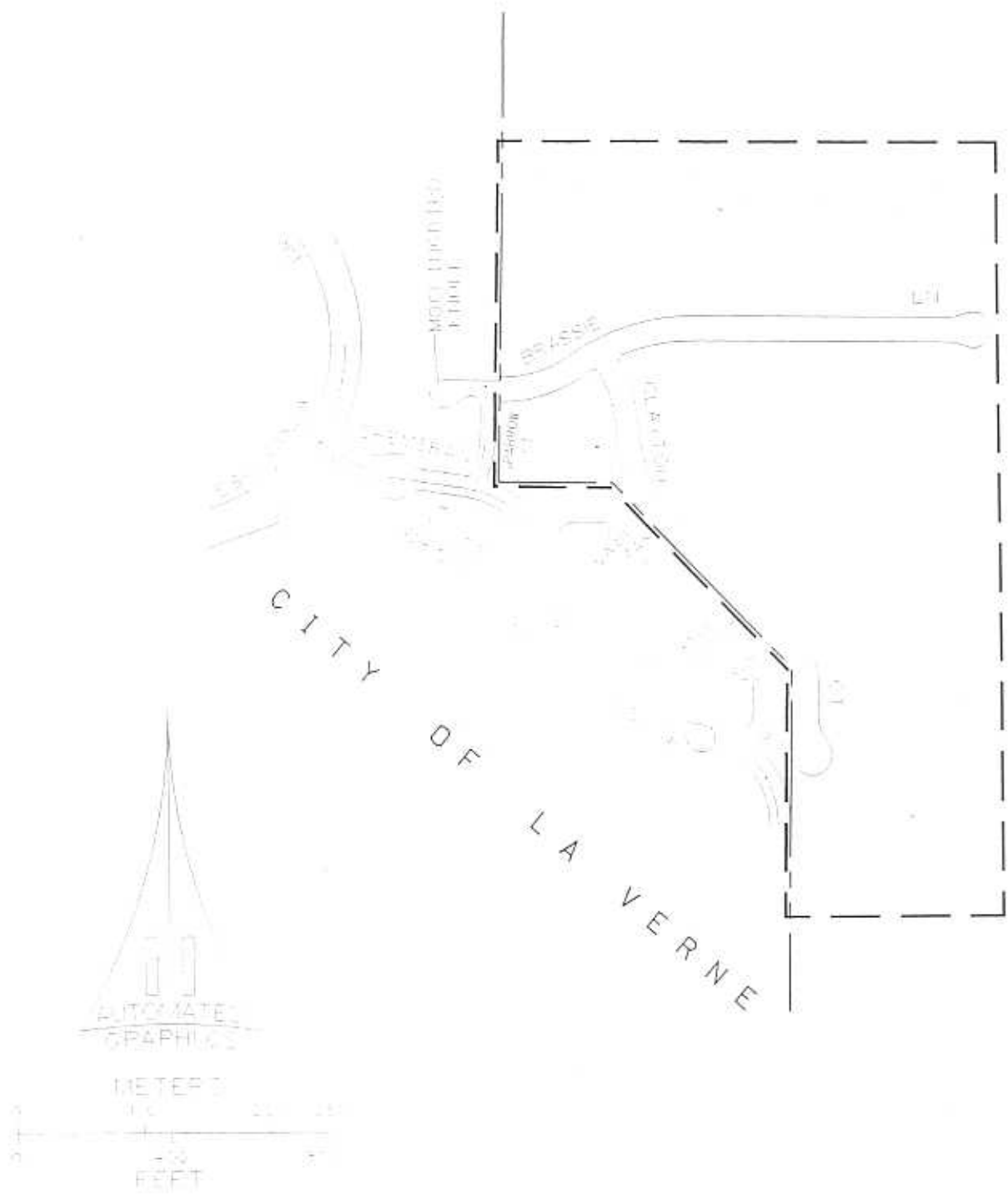
*** SMTRA - SEWER MAINTENANCE TRA REPORT
TOTAL TRA 00005217
*** SMTRA COMPLETED



AREA IN ACRES 25.5	DS	S&W MAP 5-1481 6-1482	TBM 1:672:E7	AMB
NO. OF PARCELS	NO. OF CONDO UNITS	NO. OF APT. UNITS	PREPARED BY	
PRIVATE CONTRACT NUMBERS: P.C.'S 2777, 6542, 10421				
CADD PART NAME: san.misc.zones.aneta	DATE	REV.	SHEET 1 OF 1	

COUNTY OF LOS ANGELES
DEPARTMENT OF PUBLIC WORKS
WATERWORKS AND SEWER MAINTENANCE DIVISION

DIAGRAM SHOWING BOUNDARY OF
ANETA ZONE
WITHIN THE
CONSOLIDATED SEWER MAINTENANCE DISTRICT

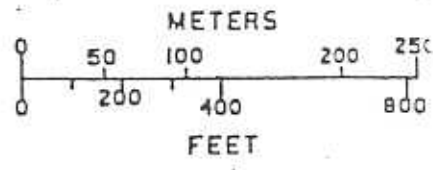
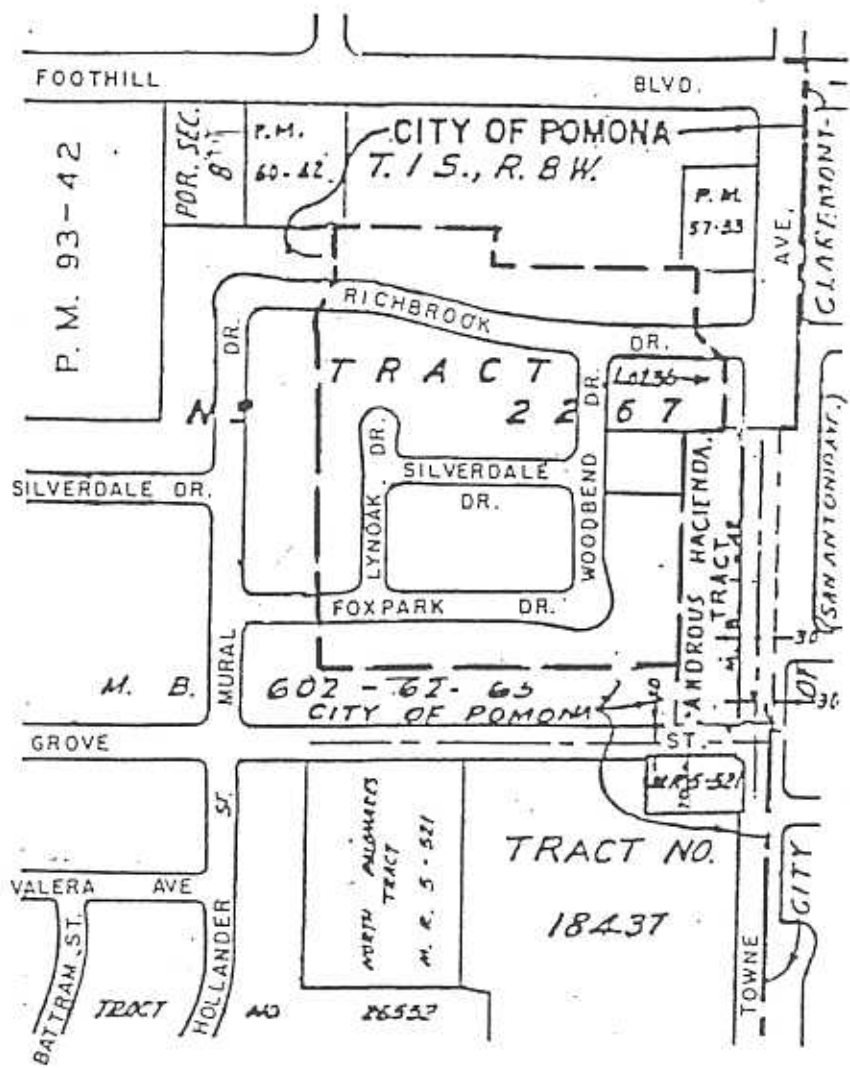


LOS ANGELES COUNTY
 DEPARTMENT OF PUBLIC WORKS

LEGEND:
 - - - - - BOUNDARY OF
 ZONE & DISTRICT

DIAGRAM SHOWING
 BOUNDARY OF BRASSIE LANE ZONE
 WITHIN THE
 CONSOLIDATED SEWER MAINTENANCE DISTRICT

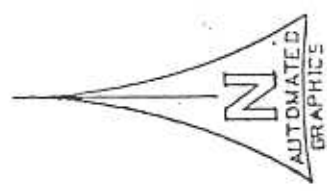
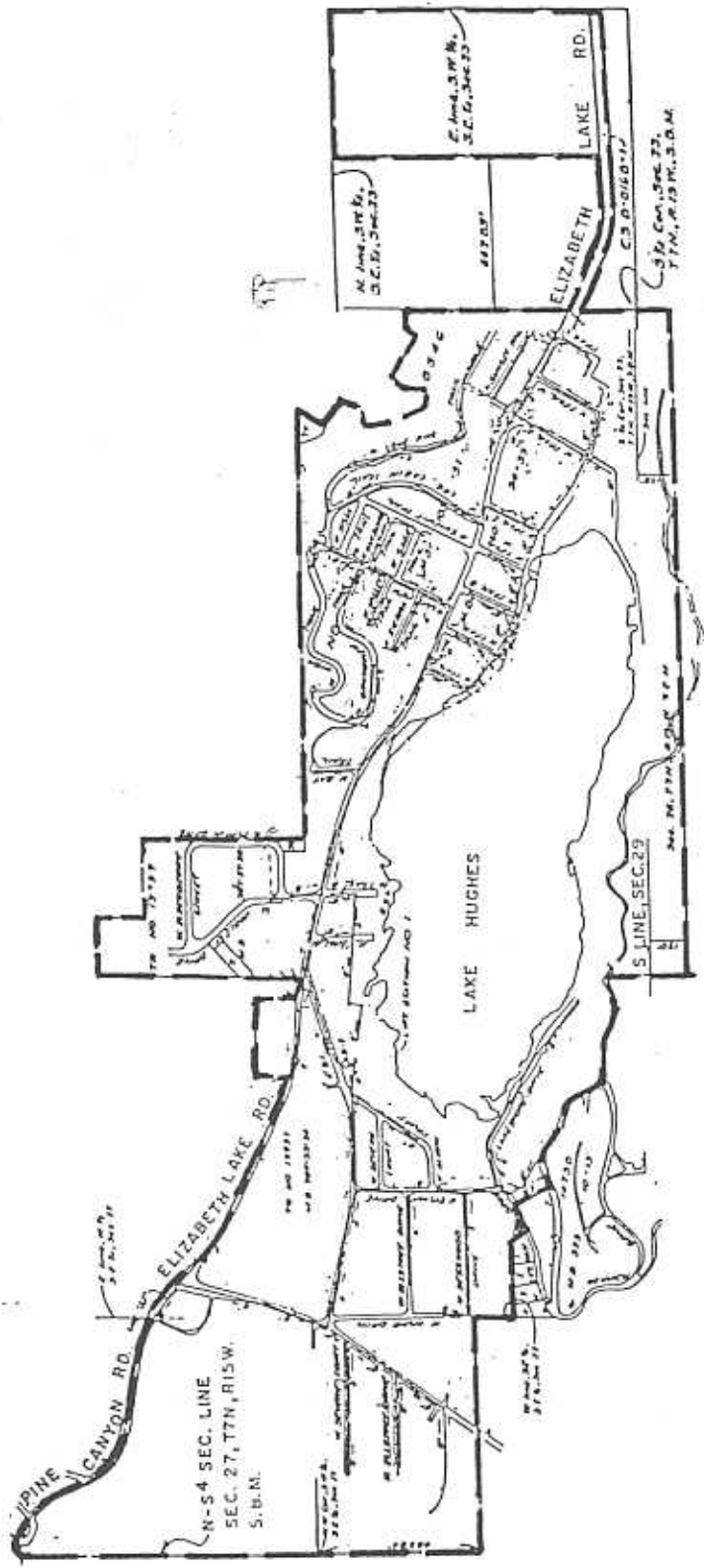
10/10/10 10:00 AM 10/10/10



LOS ANGELES COUNTY
DEPARTMENT OF PUBLIC WORKS

DIAGRAM SHOWING
BOUNDARY OF FOXPARK ZONE WITHIN
THE CONSOLIDATED SEWER MAINTENANCE DISTRICT

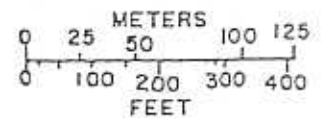
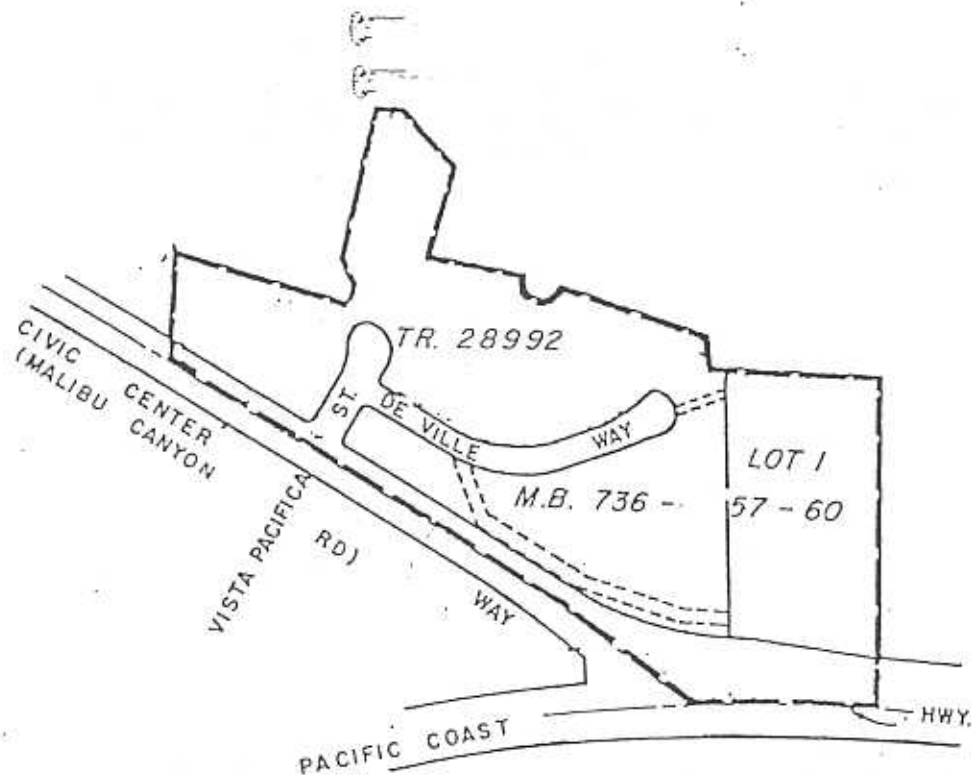
LEGEND:
 ——— BOUNDARY OF ZONE



LOS ANGELES COUNTY
 DEPARTMENT OF PUBLIC WORKS

LEGEND: ——— BOUNDARY OF ZONE & DISTRICT

DIAGRAM SHOWING
 BOUNDARY OF LAKE HUGHES ZONE WITHIN
 THE CONSOLIDATED SEWER MAINTENANCE DISTRICT



<p>LOS ANGELES COUNTY DEPARTMENT OF PUBLIC WORKS</p>	<p>DIAGRAM SHOWING BOUNDARY OF MALIBU ZONE WITHIN THE CONSOLIDATED SEWER MAINTENANCE DISTRICT</p>
<p>LEGEND: —— BOUNDARY OF ZONE & DISTRICT</p>	

25
T1S, R18W

W. LINE. ELY
50 AC. W 1/2
SE 1/4
N. LI. S 1/2 SE 1/4

E. LINE SEC. 25

S LINE SEC. 25

O. R. D: D5205 - 456

PCL 3

PEPPERDINE
UNIVERSITY

PCL 2

PCL 4

O. R. D: 4903 - 161

TR. N O.
3 0 1 3 4
M. B. 820 - 15 - 22

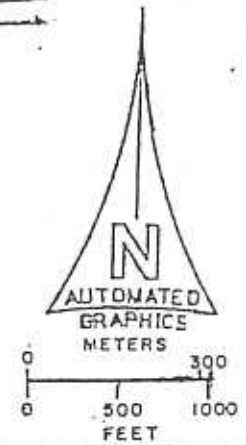
JOHN TYLER DR.
(MARIE CANYON RD.)

MALIBU CANYON

RD.

PACIFIC COAST

HWY.



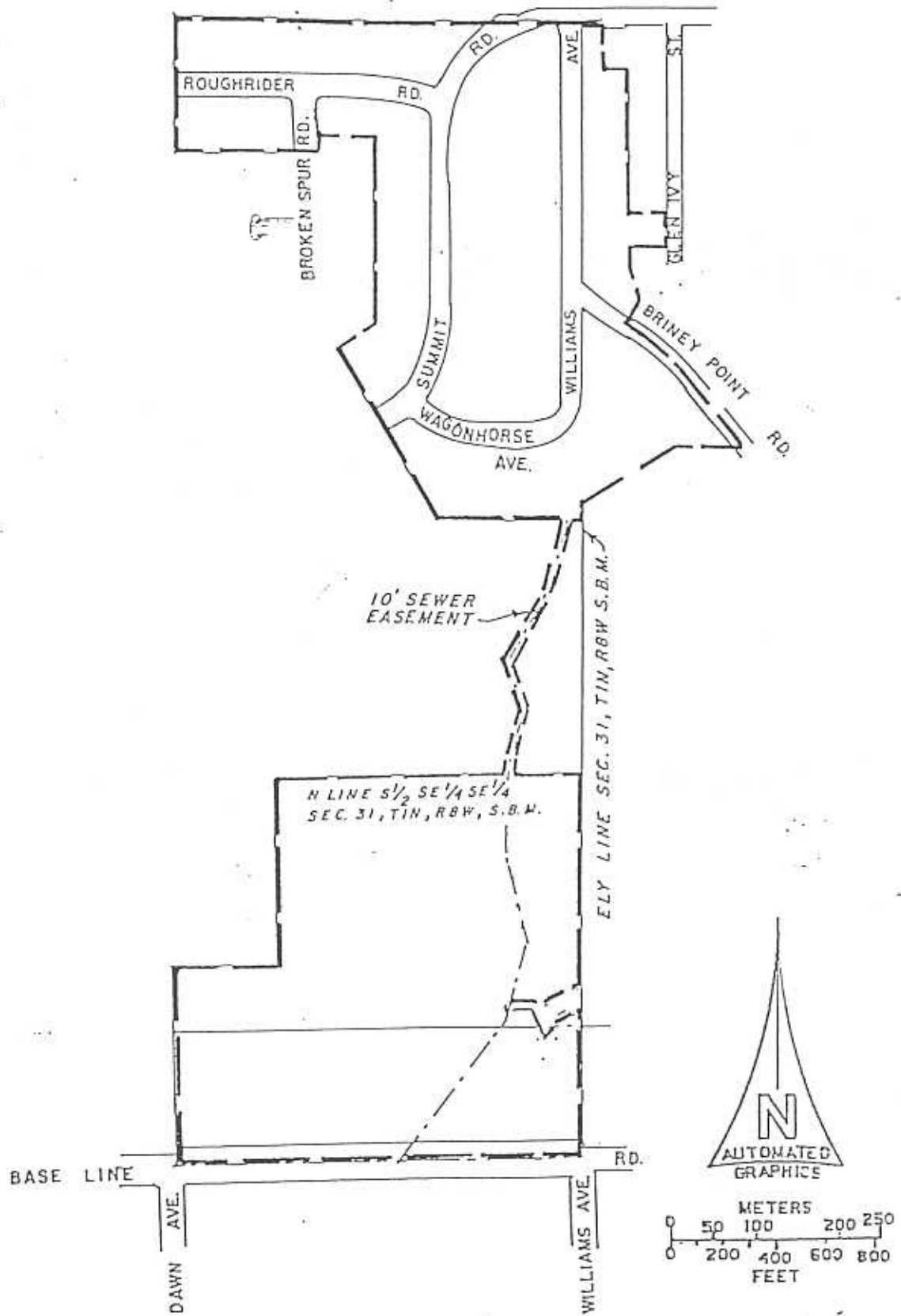
LOS ANGELES COUNTY
DEPARTMENT OF PUBLIC WORKS

DIAGRAM SHOWING

BOUNDARY OF MALIBU MESA ZONE WITHIN
THE CONSOLIDATED SEWER MAINTENANCE DISTRICT

LEGEND:

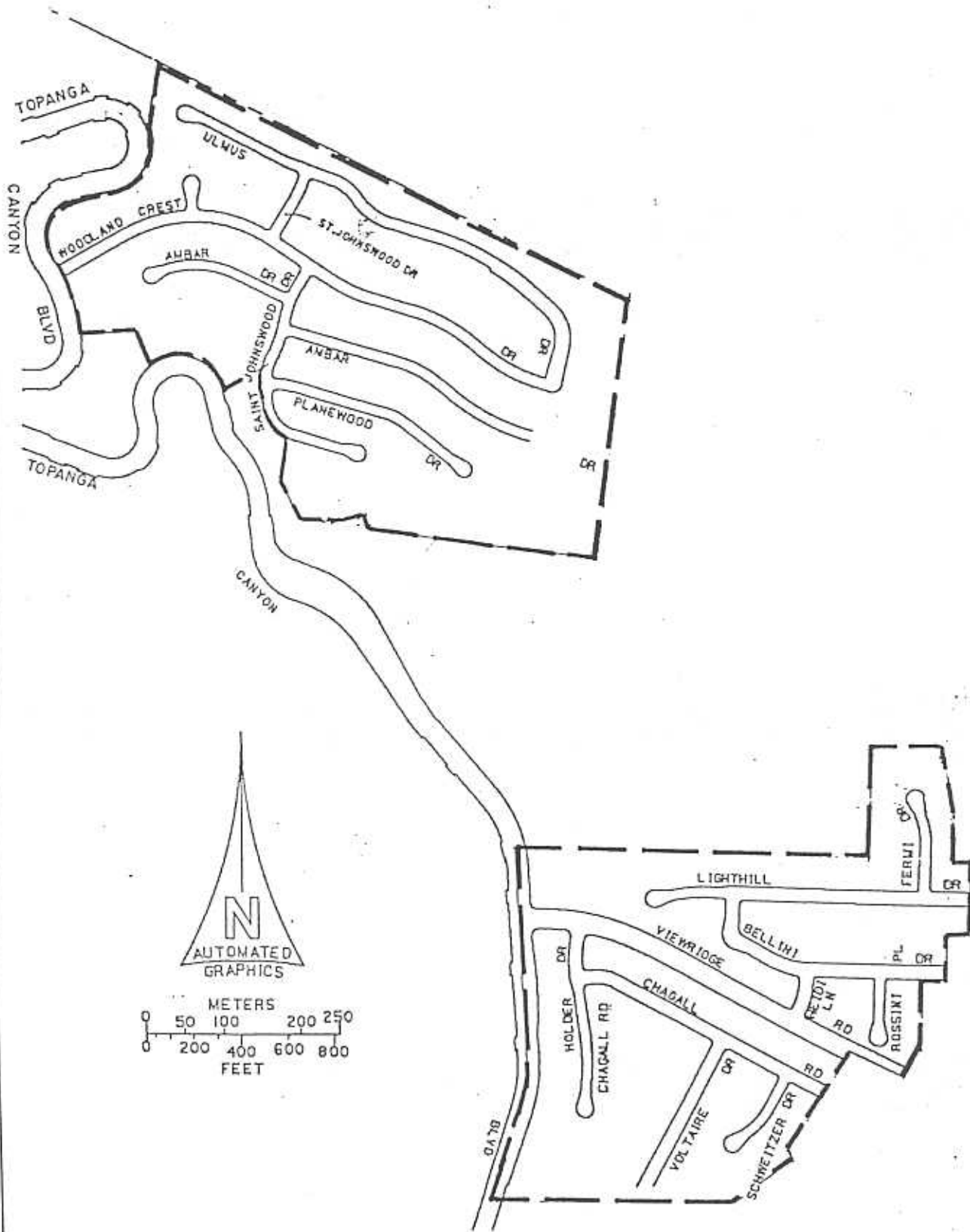
— — — — — BOUNDARY OF
ZONE & DISTRICT



LOS ANGELES COUNTY
DEPARTMENT OF PUBLIC WORKS

LEGEND:
 ——— BOUNDARY OF
 ZONE & DISTRICT

DIAGRAM SHOWING
 BOUNDARY OF SUMMIT ROAD ZONE WITHIN
 THE CONSOLIDATED SEWER MAINTENANCE DISTRICT



LOS ANGELES COUNTY
DEPARTMENT OF PUBLIC WORKS

LEGEND:
 - - - - - BOUNDARY OF ZONE & DISTRICT

DIAGRAM SHOWING
 BOUNDARY OF TOPANGA ZONE WITHIN
 THE CONSOLIDATED SEWER MAINTENANCE DISTRICT

LOS ANGELES COUNTY

CITY

S.M.D. 1016
S.M.D. 1029

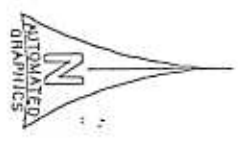
RANCHO TOPANGA
OF

AMACAPA

RAMBLA DEL ORTO DR

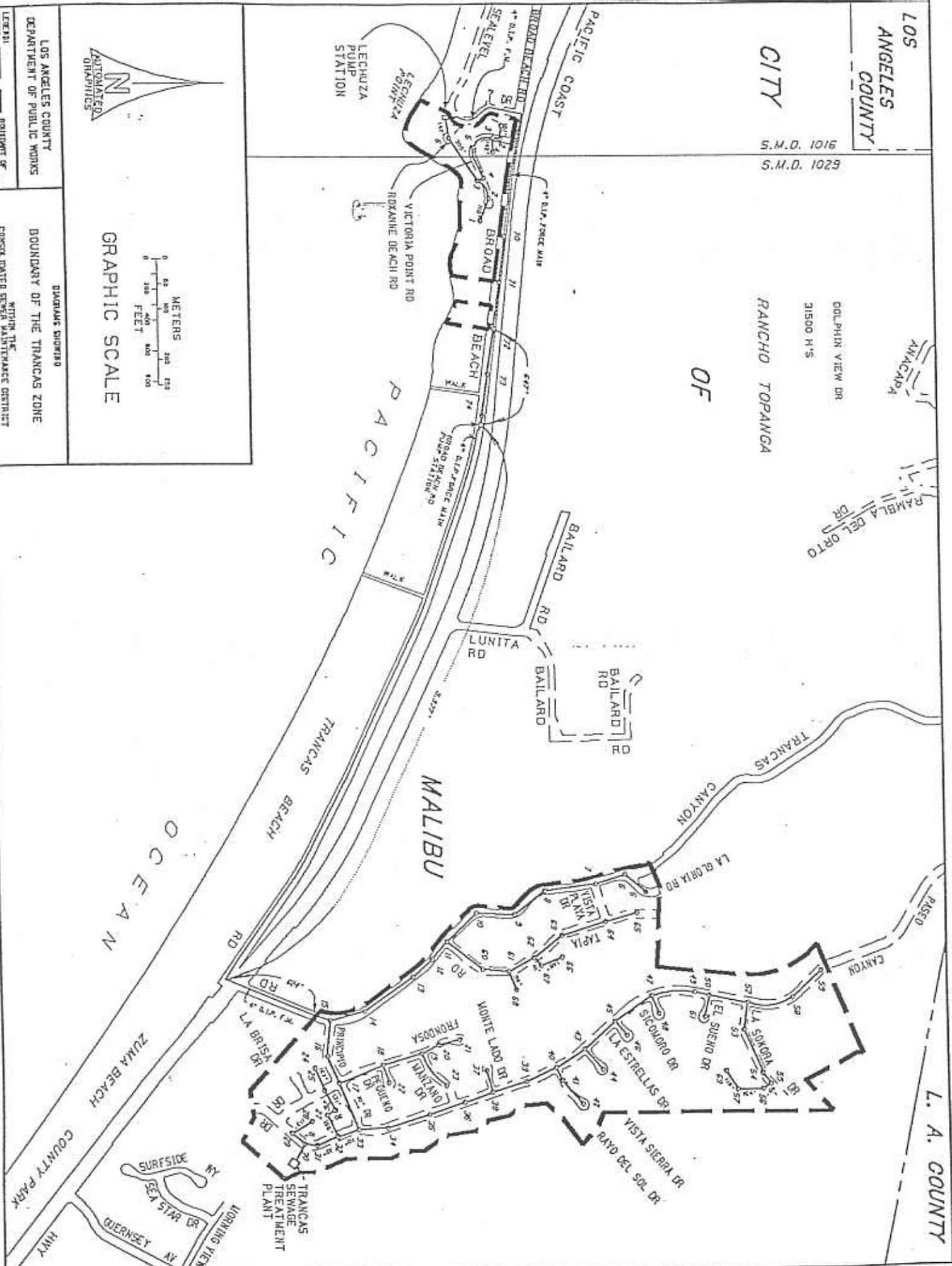
DOLPHIN VIEW DR
21500 H'S

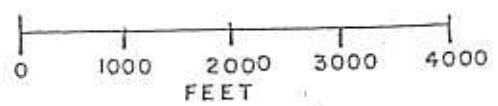
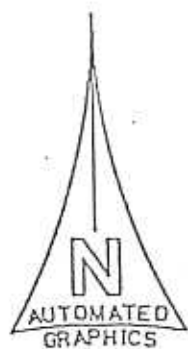
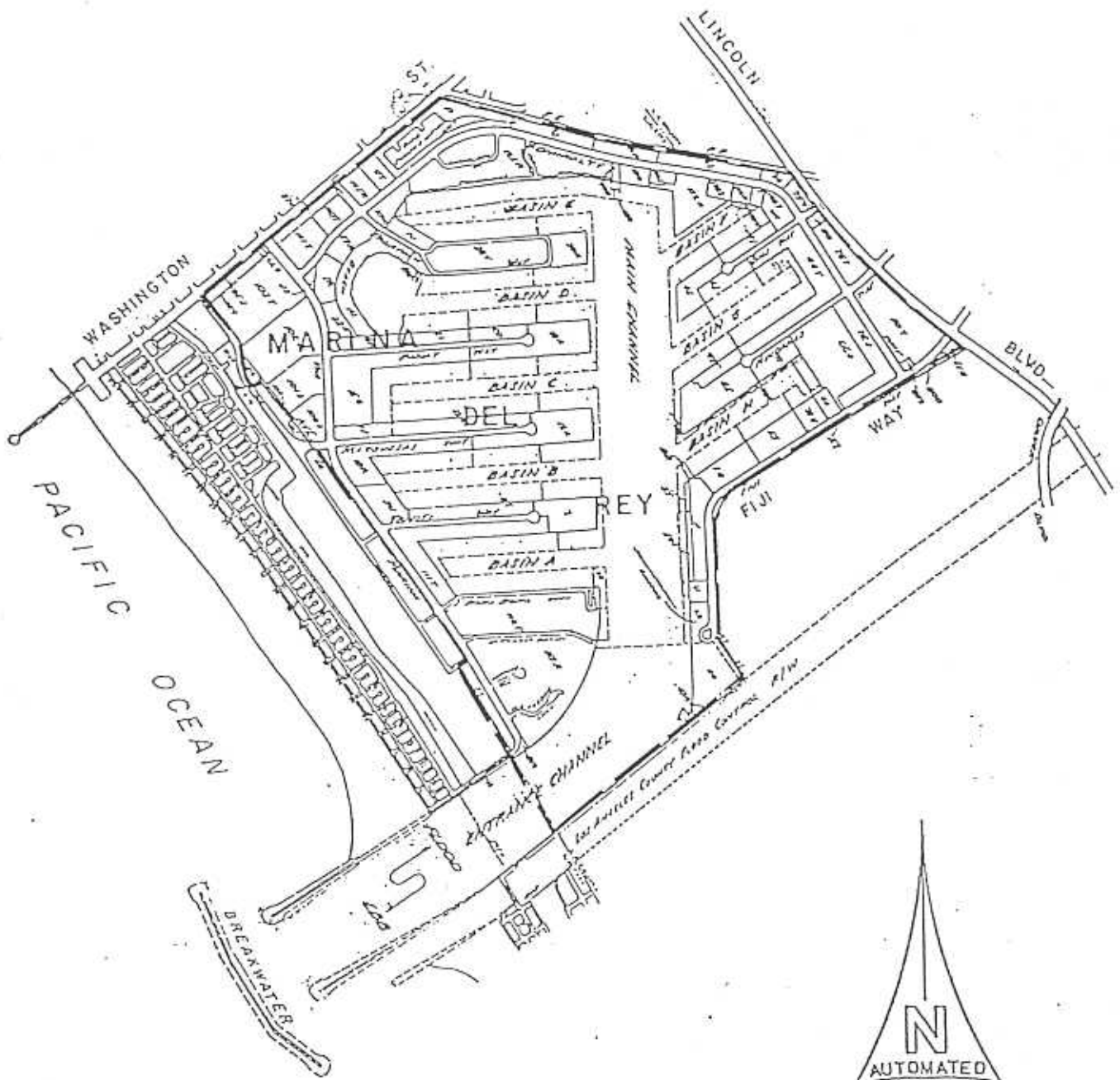
L. A. COUNTY



GRAPHIC SCALE

LOS ANGELES COUNTY
DEPARTMENT OF PUBLIC WORKS
DIAGRAM SIGNING
BOUNDARY OF THE TRANCAS ZONE
WITHIN THE
CONSOLIDATED CENTER MAINTENANCE DISTRICT





LOS ANGELES COUNTY
DEPARTMENT OF PUBLIC WORKS

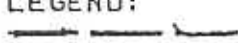
LEGEND:
 BOUNDARY OF DISTRICT

DIAGRAM SHOWING
BOUNDARY OF MARINA
SEWER MAINTENANCE DISTRICT

INSTRUCTION SHEET FOR PUBLISHING
LEGAL ADVERTISEMENTS

TO: Executive Officer of the
Board of Supervisors
County of Los Angeles
State of California

FROM: Department of Public Works
Waterworks and Sewer Maintenance Division

**NOTICE OF HEARING
ON PROPOSED REVISION OF SEWER SERVICE CHARGES
FOR THE MARINA AND THE CONSOLIDATED SEWER MAINTENANCE DISTRICTS**

PUBLISHING

In accordance with Section 6066 of the Government Code of the State of California, Publication of this Hearing is to be published once a week for two weeks in a weekly newspaper. Publish in both an English and a Spanish language newspaper, the Metropolitan News and La Opinion, respectively.

SECTION 6066. Two weeks. Publication of notice pursuant to this section shall be once a week for two successive weeks. Two publications in a newspaper published once a week or more often, with at least five days intervening between the respective publication dates are sufficient. The period of notice commences upon the first day of publication and terminates at the end of the fourteenth day, including therein the first day.

Forward 10 reprints of attached advertisement to the Department of Public Works, Waterworks and Sewer Maintenance Division, Post Office Box 1460, Alhambra, California 91802-1460.

BDLWA.1b

Enclosure B

**NOTICE OF PUBLIC HEARING
PROPOSED SEWER SERVICE CHARGES**

Notice is hereby given that the Sewer Service Charge Annual Report for the Consolidated Sewer Maintenance District and the Marina Sewer Maintenance District has been filed with the Board of Supervisors of the County of Los Angeles and a public hearing will be held on the report by the Board of Supervisors.

Said hearing will be held on Tuesday, July _____, 2003, at _____, in the Hearing Room of the Board of Supervisors, Room 381B, Kenneth Hahn Hall of Administration, 500 West Temple Street (corner of Temple Street and Grand Avenue), Los Angeles, California 90012.

The Additional Annual Zone Sewer Service Charge for the Aneta Zone is proposed to be reduced by \$20, from \$40 to \$20, per sewage unit.

The Additional Annual Zone Sewer Service Charge for the Topanga Zone is proposed to be reduced by \$14.80, from \$416.40 to \$401.60, per sewage unit.

The annual District-wide sewer service charge for the Consolidated Sewer Maintenance Districts, the Marina Sewer Maintenance District, and the other sewer zones, with the exception of the Malibu Mesa Zone, will remain unchanged.

The Board of Supervisors will consider and may adopt or modify the sewer service charges. Further notice is given that the Board of Supervisors may continue this hearing from time to time. At the hearing, the Board of Supervisors shall consider all objections and protests to the report. If the Board of Supervisors finds that protest is made by the owners of a majority of separate parcels of property described in the report, then the report shall not be adopted and the charges shall be collected separately from the tax roll and shall not constitute a lien against any parcel or parcels of land.



Upon 72 hours notice, the Department can provide program information and publications in alternate formats or make other accommodations for people with disabilities. In addition, program documents are available at our main office in Alhambra (900 South Fremont Avenue), which is accessible to individuals with disabilities. To request accommodations ONLY, or for more ADA information, please contact our departmental ADA Coordinator at (626) 458-4081 or TDD (626) 282-7829, Monday through Thursday, from 7:00 a.m. to 5:30 p.m.

Si no entiende está noticia ó si necesita mas información, favor de llamar a este numero (626) 300-3306.

VIOLET VARONA-LUKENS
Executive Officer of the Board of Supervisors

By _____
Deputy

**AVISO DE AUDIENCIA PUBLICA
CARGOS SUGERIDOS A LOS SERVICIOS DE DRENAJE**

Este aviso es para indicar que el Reporte Anual de Cargos al Servicio de Drenajes que pertenece al Distrito Consolidado de Mantenimiento de Drenajes (Consolidated Sewer Maintenance District) y al Distrito de Mantenimiento de Drenajes de la Marina del Rey, ha sido sometido para una audiencia pública ante la Junta de Supervisores del Condado de Los Angeles.

Dicha audiencia se llevará a cabo el Martes _____, 2003, a las _____ en el salon de audiencias (Hearing Room) de la Junta de Supervisores, Salon 381B, Kenneth Hahn Hall of Administration, 500 West Temple Street (esquina de Temple Street y Grand Avenue), Los Angeles, California 90012.

El cargo adicional por servicio de drenaje en la Zona de Aneta esta propuesto a reducirse \$20, de \$40 a \$20 por unidad de drenaje.

El cargo adicional por servicio de drenaje en la Zona de Topanga esta propuesto a reducirse \$14.80, de \$416.40 a \$401.60 por unidad de drenaje.

El cargo anual de servicio de drenaje dentro del Distrito Consolidado, y el Distrito de Mantenimiento de Drenajes de la Marina, y estas otras siete Zonas permaneceran sin cambio, con la excepcion de la Zona de Malibu Mesa.

La Junta de Supervisores tomara en cuenta, y podría adoptar o modificar cargos a los servicios de drenaje. Ademas, se notifica que la Junta de Supervisores podría continuar estas audiencias consecutivamente. Durante la audiencia, la Junta de Supervisores tomará en cuenta toda objeción y protesta referente al Reporte. En caso que se presentasen protestas por propietarios con mayoría de voto, quienes poseén parcelas descritas en el Reporte, entonces dicho Reporte no será adoptado. En dado caso, los cargos serían recaudados por separado, usando impuestos de las propiedades, lo que no constituiría un derecho a la retención de ninguna parcela o parcelas de terreno.



Con 72 horas de aviso, el Departamento puede proveerle información y publicaciones sobre el programa, al igual que formatos alternativos, o hacer adaptaciones para personas incapacitadas. Además, documentación sobre el programa está disponible en nuestra oficina principal localizada en Alhambra (900 South Fremont Avenue), la cual es accesible para individuos con incapacidades. Para solicitar adaptaciones SOLAMENTE, o más información tocante a la ley de Americans with Disabilities Act (ADA), por favor comuníquese con el Coordinador del Departamento ADA al (626) 458-4081, o TDD (626) 282-7829, de Lunes a Jueves de 7:00 a.m. a 5:30 p.m.

VIOLETA VARONA-LUKENS
Oficial Ejecutiva del Consejo de Supervisores

Por _____
Diputado

BDLWA.1c