

COUNTY OF LOS ANGELES
DEPARTMENT OF AGRICULTURAL COMMISSIONER/WEIGHTS AND MEASURES

Western Drywood Termite (*Incisitermes minor*)

Distribution: Widely distributed in the western U.S. and northwestern Mexico. Introduced and established in several eastern and southeastern states, as well as in Hawaii.

Damage: Attacks various wood products, and also dead, dry sections of trees and shrubs. Oval, hexagonal fecal pellets (about 1 mm long) present in galleries, can often be seen piled up outside around damaged wood indicating colony's location.

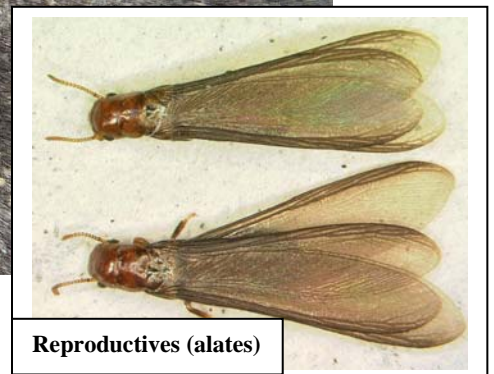
Field ID: Reproductive (alate) (about 11-12.5 mm long, including wings) has orange-brown head and first thoracic segment and dark brown to black abdomen. Wings are grayish-black, translucent and have 3 strong veins at base. Head with ocelli. Fontanelle absent.

Soldier has brown, rectangular head and light brown thorax and abdomen. Third antennal segment as long as (or longer than) the next three segments combined. Mandibles are black with asymmetrically positioned teeth.

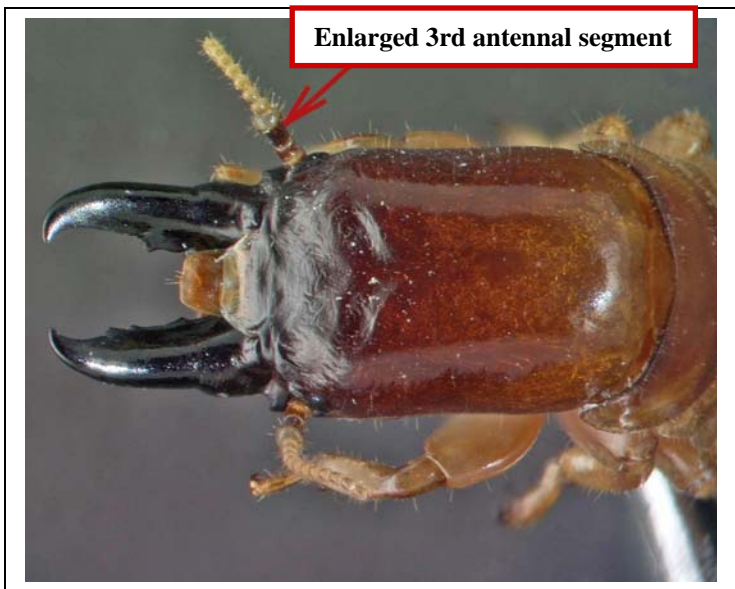
Nymphs (*I. minor* lacks true worker caste) are difficult to distinguish from other termite species and are of little value for identification.



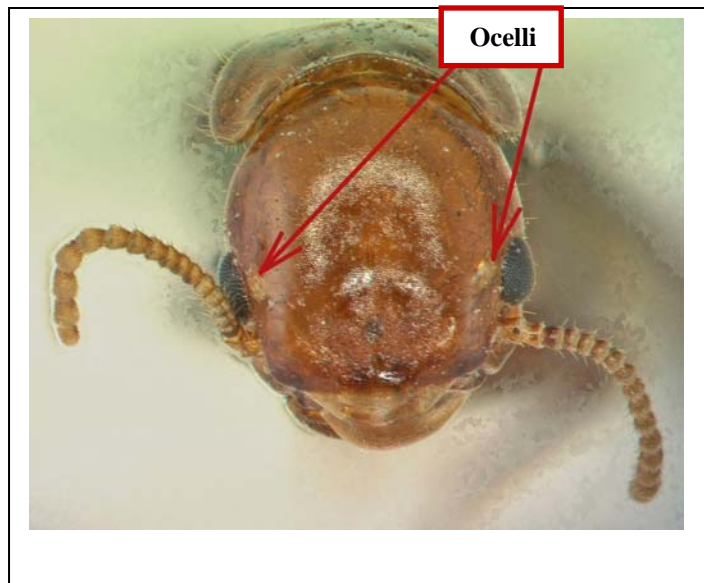
Nymphs and a soldier



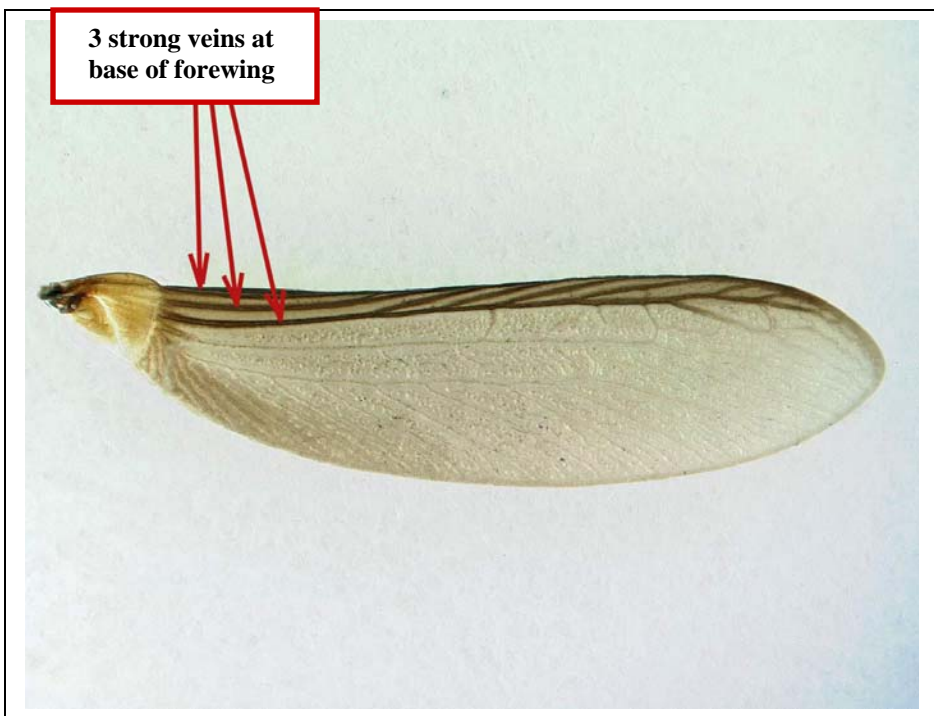
Reproductives (alates)



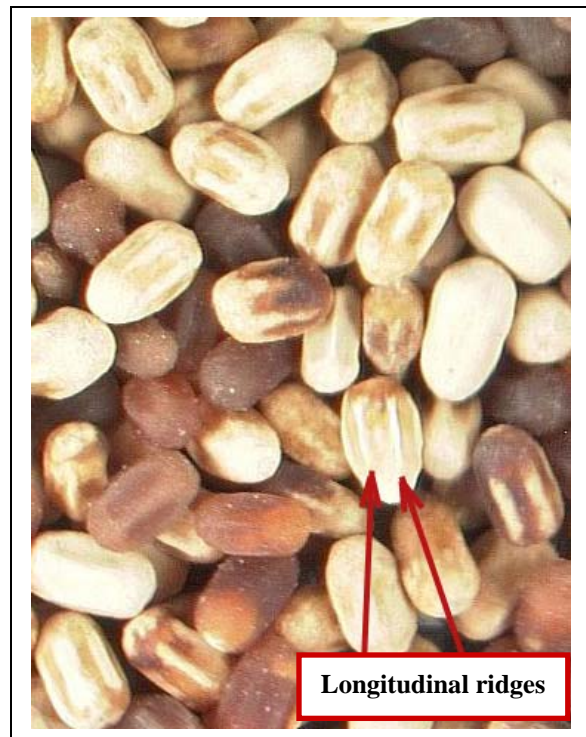
Head of the soldier



Head of the reproductive (alate)



Forewing of the reproductive (alate)



Hexagonal fecal pellets