

COUNTY OF LOS ANGELES
DEPARTMENT OF AGRICULTURAL COMMISSIONER/WEIGHTS AND MEASURES

Diaprepes Root Weevil (*Diaprepes abbreviatus*)

Other common names: Apopka Weevil, Citrus Root Weevil, Sugarcane Rootstalk Borer, West Indian Weevil.

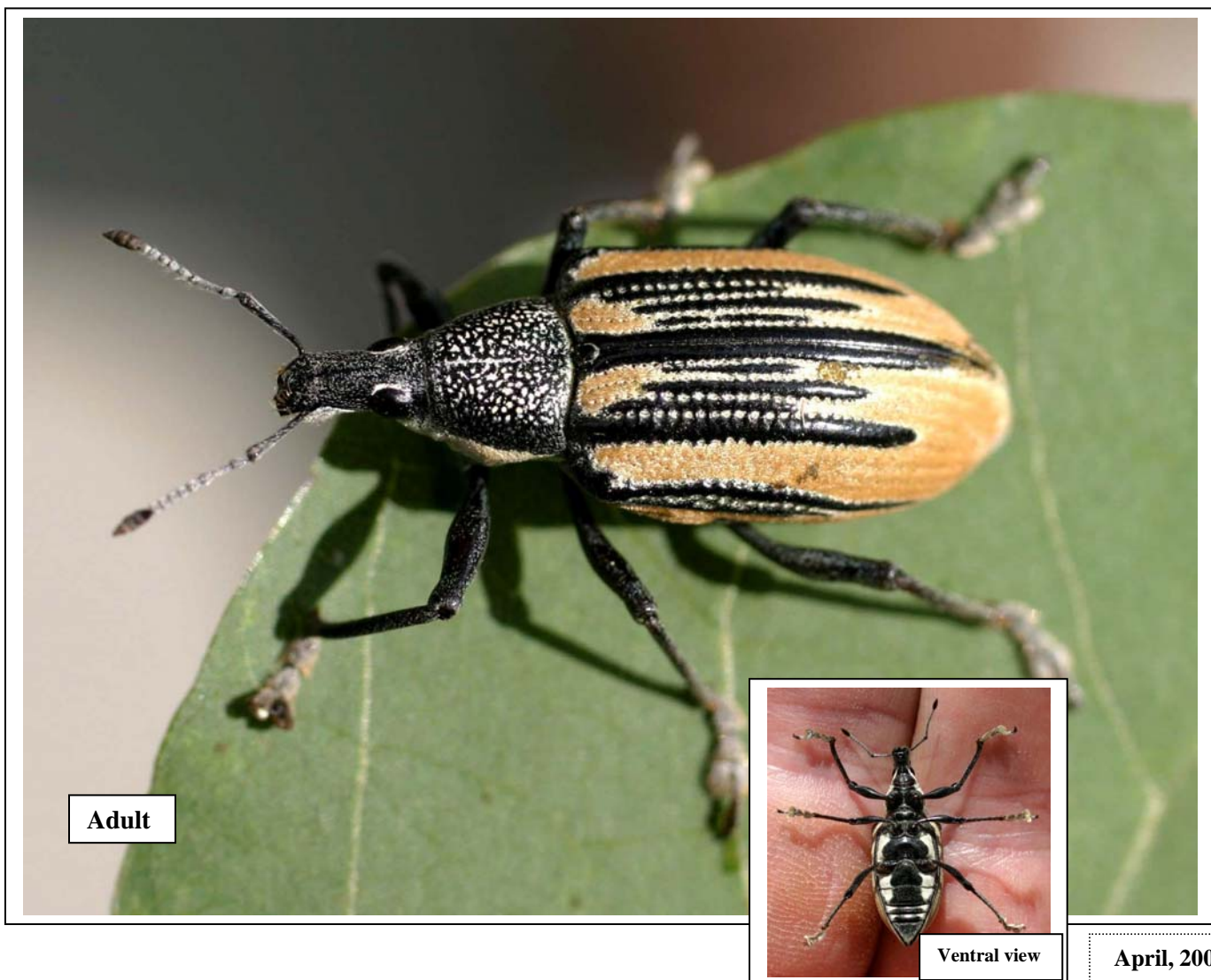
Distribution: Native to the Caribbean region. Introduced into Florida, Texas and California.

Hosts: Polyphagous. Attacks citrus and many other commercial and ornamental plants (more than 270 species of plants from 59 plant families).

Field ID: Adults (10 to 19 mm) black with white to orange scales on the wing covers. Feed on foliage and occasionally fruit. Like many other adult weevils, they chew semicircular notches in edges of leaves.

Larvae white, legless and reach 25 mm in length. Head with light and dark areas. Feed on roots, often causing severe damage.

Eggs are laid in clusters between two leaves or inside the folded edges of the leaves.





D. abbreviatus damage on various ornamental plants

