



2014

Los Angeles County Crop and Livestock Report



CALIFORNIA'S MOST WANTED INSECT PESTS*



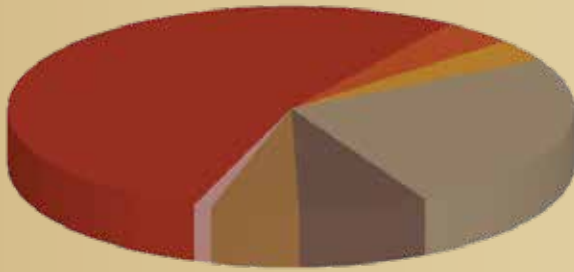
- LOS ANGELES COUNTY -
DEPARTMENT OF AGRICULTURAL COMMISSIONER/
WEIGHTS AND MEASURES



Presented by L. A. County, 2014

L
A
B
O
R
A
T
O
R
I
E
S

* If you see these villains please notify your local Agricultural Commissioner's Office!



2014 SUMMARY CHART		
	54%	NURSERY PRODUCTS
	4%	FLOWERS & FOLIAGE
	3%	FRUIT & NUT CROPS
	25%	VEGETABLE CROPS
	8%	FIELD CROPS
	5%	LIVESTOCK PRODUCTION
	1%	APIARY
	<1%	FOREST PRODUCTS

SUMMARY			
COMMODITY	2012	2013	2014
Nursery Products	\$86,155,000	\$100,612,000	\$123,850,000
Flowers & Foliage	\$8,136,000	\$11,822,000	\$9,345,000
Fruit & Nut Crops	\$20,782,000	\$17,208,500	\$7,965,000
Vegetable Crops	\$42,574,000	\$43,966,000	\$57,830,000
Field Crops	\$21,556,000	\$16,059,400	\$16,903,000
Livestock Production	\$9,018,000	\$8,894,000	\$11,467,000
Apiary	\$1,748,400	\$1,966,340	\$2,320,000
Forest Products	\$16,200	\$10,170	\$6,760
TOTAL	\$173,106,050	\$200,538,410	\$229,686,760

MILLION DOLLAR COMMODITIES					
01	Woody Ornamentals	\$80,883,000	08	Indoor Plants, Flowering	\$4,142,000
02	Root Vegetables	\$52,331,000	09	Vegetable Plants	\$2,823,000
03	Bedding Plants	\$23,061,000	10	Indoor Plants, Foliage	\$2,308,000
04	Alfalfa Hay	\$13,212,000	11	Grain Hay	\$2,227,500
05	Dairy & Livestock	\$11,467,000	12	Honey	\$1,392,000
06	Turf	\$7,400,000	13	Grapes	\$1,134,000
07	Orchard Fruits	\$5,476,500	14	Ground Covers	\$1,023,000

We sincerely thank Maynard Johnson with El Monte Printing for the design layout for this year's crop report. A special word of thanks to all who assisted in creating this edition of the crop report: Public Information Officer Ken Pellman, for researching, writing, editing, and obtaining photos; Corina Monsivaiz, for generating the completed statistical report and Deputy Agricultural Commissioner Richard G. Sokulsky for overseeing the process. We also thank the staff of the Environment Protection Bureau and the staff of the Pest Exclusion and Produce Quality Bureau, including Entomologist Dr. Gevork Arakelian and Plant Pathologist Dr. Jerold Turney for gathering, compiling information and providing photographs for this report. Cover poster designed by Dr. Gevork Arakelian, Entomologist. The insects were photographed using the Leica Application Suite (LAS) digital 3D imaging system which integrates Leica automated microscopes and digital cameras and provides one common, easy-to-use, consistent user interface.



Kurt E. Floren
Agricultural Commissioner
Director of Weights and Measures

COUNTY OF LOS ANGELES

**Department of
Agricultural Commissioner/
Weights and Measures**

12300 Lower Azusa Road
Arcadia, CA 91006-5872
<http://acwm.lacounty.gov>



Richard K. Iizuka
Chief Deputy

**Karen Ross, Secretary
California Department of Food and Agriculture
and**

**The Honorable Board of Supervisors
County of Los Angeles**

Don Knabe, Chair – Fourth District

Gloria Molina – First District

Mark Ridley-Thomas – Second District

Zev Yaroslavsky – Third District

Michael D. Antonovich – Fifth District

2014 CROP AND LIVESTOCK REPORT

The total gross value of agricultural crops and commodities produced in Los Angeles County during 2014 was \$229,686,760. Although nursery production greenhouse square footage and field acreage decreased, sales increased by 23%. Nursery products make up 54% of agricultural product sales in our county, having a significant impact on total sales values. Grapes decreased in acreage by 23%. Despite production-per-acre increases, 2014 brought a 17% decrease in grape sales value.

Orchard fruit sales, which include deciduous fruit and citrus, also experienced a dramatic decrease in acreage and, consequently, sales. These crops rely on an ample supply of water and specific durations of chill hours, both of which were limited. Conversely, there were increases for crops that can tolerate warmer, more arid conditions, such as certain root vegetables. Vegetable acreage and sales decreased in almost all categories, save root vegetables and table greens. The increase in those two categories, were sufficient to bring collective acreage and sales statistics above numbers for 2013. Most field crops remained steady from the year previous, while grain hay production demonstrated an increase.

I wish to express my sincere appreciation to each of the producers and individuals who provided information for this report. My thanks are extended to the skilled and dedicated people of this Department who continue to do an excellent job in serving and protecting the agricultural community and in compiling these important statistics.

Respectfully submitted,

Kurt E. Floren
Agricultural Commissioner/
Director of Weights and Measures

*Protecting Consumers and the Environment Since 1881
To Enrich Lives Through Effective and Caring Service*

This annual publication presents statistical information on acreage, yield, and gross value of agricultural products produced in Los Angeles County. This is published in accordance with Sections 2272 and 2279 of the California Food and Agricultural Code. The production values in this report represent gross values and do not reflect the cost of production, net income, or loss to producers.

FLOWERS & FOLIAGE

Item	Year	Green House Sq Ft	Field Acres	Total Value	
Indoor Plants, Flowering	2014	650,000	3.5	\$4,142,000	▲
	2013	580,000	1.8	\$3,665,000	
Indoor Plants, Foliage	2014	161,000	6.2	\$2,308,000	▼
	2013	407,000	18.9	\$4,874,000	
Miscellaneous*	2014	54,400	78.6	\$2,895,000	▼
	2013	74,000	73.8	\$3,283,000	
*Includes orchids, lilacs, cut roses, sunflowers, poppies, delphiniums, pom poms, mums, peach blossoms, chrysanthemums, cacti, succulents, and other miscellaneous flowers.					
TOTAL	2014	865,400	88.3	\$9,345,000	▼
	2013	1,061,000	94.5	\$11,822,000	



NURSERY PRODUCTS

Item	Year	Green House Sq Ft	Field Acres	Total Value	
Woody Ornamentals	2014	3,250,500	850.9	\$80,883,000	▲
	2013	4,226,000	696.2	\$53,590,000	
Bedding Plants	2014	1,490,000	123.4	\$23,061,000	▼
	2013	1,285,000	104.1	\$26,129,000	
Turf	2014		485.0	\$7,400,000	▼
	2013		749.0	\$7,926,000	
Vegetable Plants	2014	231,800	3.8	\$2,823,000	▲
	2013	43,000	13.8	\$2,082,000	
Bonsai	2014	66,600	5.5	\$380,000	▲
	2013	109,900	9.0	\$373,000	
Ground Covers	2014	349,000	12.9	\$1,023,000	▲
	2013	131,300	16.5	\$918,000	
Miscellaneous*	2014	998,800	48.1	\$8,280,000	▼
	2013	548,600	129.2	\$9,594,000	
*Includes perennials, Christmas trees, dragon fruits, lucky bamboo, fruit trees, citrus trees, plumerias, cycads, and other miscellaneous nursery plants.					
TOTAL	2014	6,386,700	1,529.6	\$123,850,000	▲
	2013	6,343,800	1,717.8	\$100,612,000	

VEGETABLE CROPS

Item	Year	Acreage	Production per Acre	Production Total	Unit	Value per Unit	Total Value	
Corn	2014	134.5	1.9	249.1	Ton	\$650	\$162,000	▼
	2013	129.9	5.0	647.5	Ton	\$752	\$487,000	
Tomatoes	2014	41.6	8.0	333.15	Ton	\$1,297	\$432,000	▼
	2013	36.1	19.8	714.8	Ton	\$750	\$536,000	
Root Vegetables	2014	6,168.8	Include dry onions, garlic, carrots, potatoes, radishes, beets, turnips and other root vegetables.				\$52,331,000	▲
	2013	4,674.7					\$36,295,000	
Vine Crops	2014	69.8	Include cucumbers, green beans, melons, pumpkins, squash, zucchinis, watermelons, and cantaloupes.				\$421,000	▼
	2013	89.7					\$597,000	
Table Greens	2014	18.4	Include spinach, kale, oriental specialties, alfalfa sprouts, and lettuces.				\$861,000	▲
	2013	25.3					\$816,000	
Herbs & Spices	2014	1.2	Include cilantro, parsley, chives, mint, thyme, fennel, and other herbs & spices.				\$37,100	▼
	2013	12.1					\$1,195,000	
Miscellaneous	2014	330.4	Include bell peppers, chili peppers, cacti, celery, chard, mustard greens, collard greens, leeks, kohlrabi, cabbages, green onions, okra, broccoli, cauliflower, eggplant, and other misc. vegetables.				\$3,586,000	▼
	2013	337.4					\$4,040,000	
TOTAL	2014	6,764.7					\$57,830,000	▲
	2013	5,305.2					\$43,966,000	



FRUIT AND NUT CROPS

Item	Year	Acreage	Production Per Acre	Production Total	Unit	Value Per Unit	Total Value	
Grapes	2014	384.7	3.73	1,435.0	Ton	\$791	\$1,134,000	▼
	2013	497.0	1.3	646.1	Ton	\$2,110	\$1,363,000	
Strawberries	2014	25.3	13.5	340.4	Ton	\$1,789	\$609,000	▲
	2013	23.5	11.1	261.9	Ton	\$1,804	\$472,500	
Orchard Fruits	2014	256.0	Includes apples, cherries, peaches, pears, plums, apricots, nectarines, persimmons, pomegranates, oranges, mandarins, citrus, and grapefruits.				\$5,476,500	▼
	2013	545.4					\$14,796,000	
Miscellaneous	2014	98.1	Includes avocados, figs, pistachios, olives, berries, guavas, cherimoya, prickly pears, and other miscellaneous fruit and nut crops.				\$745,100	▲
	2013	111.9					\$577,000	
TOTAL	2014	764.2					\$7,965,000	▼
	2013	1,177.8					\$17,208,500	

FIELD CROPS

Item	Year	Acreage	Production per Acre	Production Total	Unit	Value per Unit	Total Value	
Alfalfa Hay	2014	6,109	8.0	49,000	Ton	\$270	\$13,212,000	▲
	2013	6,215	8.2	51,000	Ton	\$247	\$12,598,000	
Grain Hay	2014	3,300	3.0	9,900	Ton	\$225	\$2,227,500	▲
	2013	2,400	3.8	9,120	Ton	\$176	\$1,605,000	
Rangeland	2014	4,595		3,045			\$91,400	
	2013	4,595		3,645			\$91,400	
Miscellaneous*	2014	1,738	Includes irrigated pasture, barley, wheat, sudan hay, oat hay, corn grain and silage, and grazing privileges on stubble.				\$1,372,000	▼
	2013	3,787						\$1,765,000
TOTAL**	2014	11,147**					\$16,903,000	▲
	2013	12,402**						\$16,059,400
* Acreage excludes stubble.								
** Excluding rangeland and stubble.								

DAIRY & LIVESTOCK

Item	Year		Total Value	
Dairy & Livestock	2014	Includes dairy cattle, beef cattle, hogs, goats, chickens, milk, goat milk, eggs, etc.	\$11,467,000	▲
	2013		\$8,894,000	

FOREST PRODUCTS

Item	Year		Total Value	
Firewood*	2014	* Figures obtained from USDA Forest Service, Angeles National Park	\$6,760	▼
	2013		\$10,170	



APIARY

Item	Year	Production	Unit	Value per Unit	Total Value	
Honey	2014	647,302	Lb.	\$2.00	\$1,392,000	▲
	2013	517,092	Lb.	\$2.00	\$1,034,000	
Beeswax	2014	13,768	Lb.	\$3.75	\$51,600	▲
	2013	1,157	Lb.	\$3.75	\$4,340	
Miscellaneous	2014	Include pollination fees, etc.			\$876,200	▼
	2013				\$928,000	
TOTAL	2014				\$2,320,000	▲
	2013				\$1,966,340	

SUSTAINABLE AGRICULTURE REPORTING ORGANIC FARMING STATISTICS

Year	Farms	Acres
2014	27	129
2013	21	66



This year saw multiple exotic fruit fly situations in our County. In March, the City of Los Angeles neighborhood of South Park experienced a Medfly infestation. It was the first time a wild Medfly had been detected in our County since November 2011, and a quarantine resulted. In July, an infestation of Oriental Fruit Fly was discovered in North Hollywood, another infestation was found in Pomona in September, and still another in Athens in November. To finish out the year, Peach Fruit Fly was found in the Carthay neighborhood of Los Angeles in December. As always, quick, cooperative efforts in response to detections of these pests resulted in eradicating the infestations.

New to the Area

After a resident expressed annoyance at insects in his St. Augustine grass, our Entomology Lab identified *Syndelphax pseudoseminiger*, a planthopper that was a new species for the western coast of the US, previously found only in Florida, Louisiana and Georgia. The identification was later confirmed by the California Department of Food and Agriculture.

PEST EXCLUSION ACTIVITIES

Pest Exclusion Violations	# of Violations Issued	Pest Exclusion Violations	# of Violations Issued
Markings	511	Nursery Stock Certificates or Inspection	2
Infested/Presume Infested	409	Ozonium Root Rot	2
Citrus Pests	76	Walnut and Pecan Pests	2
Caribbean Fruit Fly	60	Citrus Greening/Asian Citrus Psyllid	1
Sweet Potato Weevil	40	Colorado Potato Beetle	1
Infested with Seed or Propagule	35	Cornstalk and Sugarcane Borer	1
Plum Curculio/Blueberry Maggot	34	European Pine Shoot Moth	1
European Corn Borer	30	Federal (Hawaiian) Quarantine	1
Burrowing and Reniform Nematodes	22	Federal Foreign Quarantine European Corn Borer	1
Japanese Beetle	22	Federal Domestic Quarantine Citrus Canker	1
Federal Domestic Quarantine - Fruit Flies	20	Federal Foreign Quarantine Cotton Pests	1
Failure to Hold	15	Lethal Yellowing of Palms	1
Sweet Orange Scab	4	Nut Tree Pests	1
Turtle Salmonellosis	4	Peach Tree Diseases	1
Unlawful Import of Live Pests	4	Pine Shoot Beetle	1
Chestnut Bark/Oak Wilt Diseases	3	Refused Delivery	1
Citrus Canker	3	State Interior Quarantine Oriental Fruit Fly	1
Gypsy Moth	3	State Interior Quarantine Melon Fruit Fly	1
Cedar Apple Rust	2	State Interior Quarantine Peach Fruit Fly	1
Cherry Fruit Fly	2	State Interior Quarantine Mediterranean Fruit Fly	1
Emerald Ash Borer	2	Tephritidae Fruit Fly Hosts	1
Federal Foreign Quarantine Rice Straw	2	Unlawful Import of Detrimental Animals	1
Federal Foreign Quarantine Fruits/Vegetables	2		
Imported Fire Ant	2		
TOTAL SHIPMENTS REJECTED	846	TOTAL CODE VIOLATIONS	1,332

PEST EXCLUSION ACTIVITIES – ENTOMOLOGY LABORATORY

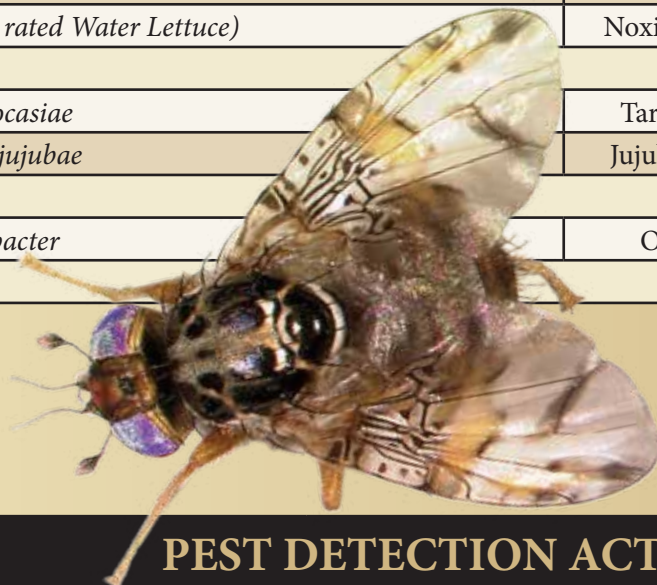
PEST INTERCEPTED Latin Name	PEST INTERCEPTED Common Name	MATERIAL	SOURCE*	# of INTERCEPTIONS
<i>Acanalonia conica</i>	Planthopper	Viburnum	Quar	1
<i>Aceria annonae</i>	Eriophyid mite	Soursop	Quar	1
<i>Agallia sp.</i>	Leafhopper	Cut foliage	Quar	2
<i>Aleurocerus sp.</i>	Whitefly	Palm	Quar	1
<i>Aleurodicus dispersus</i>	Spiraling whitefly	Betel	Quar	3
<i>Aleurotrachelus sp.</i>	Whitefly	Betel	Quar	2
<i>Anastrepha suspensa</i>	Caribbean fruit fly	White pear guava	Quar	1
<i>Aonidiella aurantii</i>	California red scale	Nursery plants/Citrus	Nurs/Quar	3
<i>Aphis sp.</i>	Aphid	Cut foliage	Quar	2
<i>Aspidiotus destructor</i>	Coconut scale	Cut foliage	Quar	1
<i>Aulacaspis tubercularis</i>	Armored scale	Mango	Quar	1
<i>Aulacaspis yasumatsui</i>	Cycad aulacaspis scale	Cycad/Cut foliage	Quar	7
<i>Bactrocera dorsalis</i>	Oriental fruit fly	Longan	Quar	1
<i>Brachymyrmex sp.</i>	Ant	Sweet potato	Quar	1
<i>Bradybaena similaris</i>	Snail	Cut foliage	Quar	7
<i>Camponotus sp.</i>	Carpenter ant	Cut foliage/Cherimoya	Quar	2
<i>Ceroplastes rubens</i>	Red wax scale	Mango	Quar	1
<i>Ceroplastes stellifer</i>	Stellate scale	Cut foliage	Quar	3
<i>Chrysodeixis eriosoma</i>	Green garden looper	Cut foliage	Quar	1
<i>Coccus sp.</i>	Soft scale	Cut foliage	Quar	6
<i>Coccus viridis</i>	Green scale	Spanish lime	Quar	1
<i>Cylas formicarius</i>	Sweet potato weevil	Sweet potato	Quar	61
<i>Delottococcus confusus</i>	Mealybug	Cut flowers	Quar	2
<i>Dendrocranulus sp.</i>	Bark beetle	Ginger	Quar	1
<i>Dialeurodes schefflerae</i>	Whitefly	Shefflera	Quar	2
<i>Diaphorina citri</i>	Asian citrus psyllid	Citrus	Nurs/Pub	3
<i>Dichromothrips corbetti</i>	Thrips	Cut flowers	Quar	1
<i>Dismicoccus grassii</i>	Mealybug	Cherimoya	Quar	1
<i>Dismicoccus neobrevipes</i>	Mealybug	Spanish lime	Quar	1
<i>Dismicoccus sp.</i>	Mealybug	Cut flowers	Quar	2
<i>Eumerus figurans</i>	Ginger maggot	Ginger roots	Quar	2
<i>Euscepes postfasciatus</i>	West Indian sweetpotato weevil	Sweet potato	Quar	1
<i>Geotomus pygmaeus</i>	Burrowing bug	Tropical plants	Quar	1
<i>Gynaikothrips uzeli</i>	Weeping ficus thrips	Weeping fig	Nurs/Pub	5
<i>Gyponana germari</i>	Leafhopper	Cut foliage	Quar	6
<i>Halymorpha halys</i>	Brown marmorated stink bug	Landscape plants	Pub	1
<i>Homalodisca vitripennis (adults)</i>	Glassy-winged sharpshooter	Nursery plants	Nurs	3,282
<i>Homalodisca vitripennis (eggs)</i>	Glassy-winged sharpshooter	Nursery plants	Nurs	9
<i>Howardia biclavis</i>	Mining scale	Cut flowers	Quar	1
<i>Hypoponera sp.</i>	Ant	Ginger/Sweet potato	Quar	4
<i>Kallitaxila granulata</i>	Planthopper	Cut foliage	Quar	19
<i>Lepidosaphes beckii</i>	Purple scale	Grapefruit	Quar	4
<i>Meghimatium bilineatum</i>	Slug	Ming Aralia	Quar	1

PEST EXCLUSION ACTIVITIES – ENTOMOLOGY LABORATORY

PEST INTERCEPTED Latin Name	PEST INTERCEPTED Common Name	MATERIAL	SOURCE*	# of INTERCEPTIONS
<i>Metcalfa pruinosa</i>	Planthopper	Viburnum	Quar	1
<i>Mitrastethus sp.</i>	Weevil	Sweet potato	Quar	3
<i>Nipaecoccus sp.</i>	Coconut mealybug	Palm	Nurs/Quar	10
<i>Nysius sp.</i>	Lygaeid bug	Cut foliage	Quar	2
<i>Ochetellus glaber</i>	Ant	Pineapple / Cut flowers	Quar	2
<i>Otiorhynchus sp.</i>	Weevil	Sweet potato	Quar	1
<i>Paracoccus gilliana</i>	Mealybug	Agave	Nurs	2
<i>Paracoccus sp.</i>	Mealybug	Agave	Nurs	4
<i>Parmarion martinsi</i>	Semi slug	Ginger/Cut foliage	Quar	6
<i>Phalacroccoccus howertoni</i>	Soft scale	Philodendron	Quar	1
<i>Pheidole megacephala</i>	Big headed ant	Cut foliage	Quar	11
<i>Phenacoccus peruvianus</i>	Mealybug	Nursery plants	Nurs	4
<i>Pinnaspis buxi</i>	Boxwood scale	Cut foliage	Quar	2
<i>Pinnaspis strachani</i>	Lesser snow scale	Cut foliage	Quar	13
<i>Plagiolepis sp.</i>	Ant	Mushrooms	Quar	1
<i>Planococcus minor</i>	Mealybug	Cut flowers	Quar	2
<i>Planococcus sp.</i>	Mealybug	Cut foliage	Quar	3
<i>Poliaspis media</i>	Cycad poliaspis scale	Cycads	Nurs	2
<i>Pomacea canaliculata</i>	Channeled apple snail	Aquatic plants	Nurs/Pub	4
<i>Protopulvinaria pyriformis</i>	Pyriform scale	Nursery plants	Nurs	3
<i>Pseudalacaspis pentagona</i>	Armored scale	Mango	Quar	1
<i>Pseudaonidia duplex</i>	Camphor scale	Mandarin	Quar	1
<i>Pseudaonidia trilobitiformis</i>	Trilobite scale	Cut flowers	Quar	2
<i>Pseudaulacaspis cockerelli</i>	Magnolia white scale	Cut foliage/Nursery plants	Nurs/Quar	16
<i>Pseudococcus sp.</i>	Mealybug	Agave	Nurs	2
<i>Pseudomyrmex gracilis</i>	Ant	Mango/Oak	Quar	2
<i>Pulvinaria psidii</i>	Green shield scale	Nursery plants	Nurs	16
<i>Pulvinaria urbicola</i>	Soft scale	Scarlet trumpet vine	Nurs	1
<i>Rhagoletis pomonella</i>	Apple maggot	Crab apple	Quar	1
<i>Singhiella simplex</i>	Ficus whitefly	Ficus	Nurs	6
<i>Solenopsis invicta</i>	Red imported fire ant	Nursery plants	Nurs/Pub	11
<i>Tarophagus colocasiae</i>	Taro planthopper	Taro/Sweet potato	Quar	15
<i>Technomyrmex vitiensis</i>	White footed ant	Rambutan/Cut foliage	Quar	16
<i>Thysanoflorinia nephelii</i>	Longan scale	Longan	Quar	1
<i>Veronicella cubensis</i>	Slug	Taro/Cut foliage	Quar	3
<i>Wasmannia auropunctata</i>	Little fire ant	Cut flowers/Ginger	Quar	4
<i>Philomycidae & Veronicellidae</i>	Slugs			6
<i>Coleoptera, Lepidoptera, Hemiptera, Orthoptera, Diptera, Hymenoptera and Thysanoptera</i>	Various immature stages of insects			112
TOTAL				3,751

PLANT PATHOLOGY LABORATORY

Plants	Material	Source*	# of Interceptions
<i>Fatoua villosa</i> (B rated Mulberry Weed)	Noxious Weed	Nurs	1
<i>Phargmites australis</i> (Q rated Common Reed)	Flowers	Quar	11
<i>Pistia stratiotes</i> (B rated Water Lettuce)	Noxious Weed	Nurs	1
Fungi			
<i>Cladosporium colocasiae</i>	Taro Leaves	Nurs	1
<i>Pseudocercospora jujubae</i>	Jujube Leaves	Nurs	3
Bacteria			
<i>Candidatus liberibacter</i>	Oranges	Quar	2
TOTAL			19



PEST DETECTION ACTIVITIES

Pest	Number of Traps Pest Detection	Specimens Trapped
All Purpose Fruit Fly (McPhail Traps)	5,000	0
Mediterranean Fruit Fly (Jackson Traps)	5,100	28
Melon Fruit Fly (Jackson Traps)	5,100	0
Oriental Fruit Fly (Jackson Traps)	5,100	24
Gypsy Moth	2,500	2
Japanese Beetle	2,800	0
Striped Fruit Fly	0	1
Peach Fruit Fly	0	2
New World Guava Fruit Fly	0	1
True Guava Fruit Fly	0	3
TOTAL	25,600	61

PEST ERADICATION ACTIVITIES

Pest	Method	Scope of Program
Oriental Fruit Fly	Male Attractant Technique	8 treatment areas
Mediterranean Fruit Fly	Continued preventative program: sterile Medfly release countywide	1 treatment area
Oriental Fruit Fly	Male Attractant Technique	1 treatment area

BIOLOGICAL CONTROL ACTIVITIES

Pest	Method	Scope of Program
Mediterranean Fruit Fly	Sterile Release	Approximately 8.2 billion sterile Medflies released



LABS!

In unassuming buildings in South Gate, three laboratories provide the County of Los Angeles Department of Agricultural Commissioner/Weights and Measures with an eminent and strong scientific foundation. Our Pest Exclusion and Produce Quality Bureau's Entomology and Plant Pathology Laboratories and our Weights and Measures Bureau's Metrology Laboratory help our staff discern and document the nature and scope of potential threats from invasive pests and diseases and provide critical services to growers, businesses, and residents alike.

The Entomology and Plant Pathology Laboratories identify exotic insects and other invertebrates, invasive weeds and plant pathogens entering the county through truck, cargo, seafreight, airfreight, and parcel delivery operations. The labs process over 8,000 pest specimens annually. We have a reference collection of over 98,500 invertebrate specimens, including about 55,000 pinned specimens, 35,000 samples preserved in alcohol vials, and 8,500 samples mounted on microscope slides. Our archived pest image database holds more than 8,000 photos.

Our Metrology Lab has Echelon III Accreditation status from the National Institute of Standards and Technology/Office of Weights and Measures, enabling us to calibrate and certify commonly used mass and volume standards for the weighing and measuring device service industry and other regulatory agencies. Simply put, this is how we can ensure that a gallon is a gallon and a pound is a pound.