

Los Angeles County
Department of Coroner
2003
Annual Report





Gloria Molina

Supervisor, First District

Yvonne Brathwaite Burke

Supervisor, Second District

Zev Yaroslavsky

Supervisor, Third District

Don Knabe

Supervisor, Fourth District

Michael D. Antonovich

Supervisor, Fifth District

On December 7, 1990, an ordinance approved by the County of Los Angeles Board of Supervisors created a Department of Coroner administered by a nonphysician director for all nonphysician operations, while retaining the Chief Medical Examiner-Coroner to set standards for the entire department and carry out statutorily mandated Coroner functions.

The ordinance placed the responsibility for all physician staff under the control the Chief Medical Examiner-Coroner, subject to the general direction of the Board of Supervisors, and the nonphysician director was given authority to manage/direct all nonphysician operations and staff within the department, subject to the general direction of the Board of Supervisors.



Index

Topic	Page
Department Heads' Message.....	4
Organizational Chart.....	6
Administrative Services Bureau.....	8
Forensic Medicine Bureau.....	10
Forensic Laboratories Bureau.....	12
Operations Bureau.....	14
Public Services Division.....	18
Population of Los Angeles County.....	22
Reported and Accepted Cases	23
Final Mode of Coroner's Cases.....	24
Death Rates per 100,00 Population.....	25
Modes for Child Death.....	26
Statistics Required by NAME.....	27
Coroner Cases by Age.....	28
Coroner's Cases by Gender.....	29
Coroner's Cases by Race.....	30
Mode of Death by Month.....	31
Racial Distribution for Each Mode.....	32
Mode of Death by Month.....	33
Accidental Deaths.....	34
Transport Accidents.....	35
Accidental Falls.....	36
Homicidal Deaths.....	37
Suicidal Deaths.....	38
Academic Activities.....	39
Toxicology Statistics Index.....	40
Cases with Drugs Detected by Mode.....	41
Alcohol Detected by Mode.....	41
Cocaine Detected by Mode.....	42
Methamphetamine Detected by Mode.....	42
Heroin Detected by Mode.....	43
Phencyclidine Detected by Mode.....	43
Club Drug by Mode.....	44
Prescription Drug by Mode.....	44
Maps	45



This report contains statistical information from the Los Angeles County Department of Coroner for the year 2003, as well as selected statistics from the previous ten years.

Significant Accomplishments

In 2003 the Department of Coroner began several major initiatives to upgrade its facilities to handle daily workload and improve disaster preparedness:

- Worked with the County Chief Administrative Office to acquire the newly renovated Old Administration Building adjacent to the Coroner's Office. This building will house non-biohazardous Department functions.
- Prepared for mass disasters by screening all incoming decedents for radiation, training field response employees in Standardized Emergency Management System (SEMS), and offering smallpox vaccination to employees.
- Implemented an on-call investigator field response program to provide efficient regional response to cases, reduce overtime and offset staffing shortages.
- Instituted automatic reporting of incoming cases to Acute Communicable Disease Control. This system will provide an early warning of outbreaks of contagious disease.

The Department participated in educational activities for physicians, investigators, and other forensic science professionals:

- Worked with the California State Coroner's Association and Orange County Coroner to create an advanced training curriculum for Coroner's investigators throughout the state.
- Held the Forensic Skeletal Recovery Workshop in June 2003.
- Held a Disaster Symposium in March 2003.



Legislation

During the year 2003, new laws affected the functions of the Department of Coroner.

- AB777 - Establishes procedures for cases where the medical examiner or coroner is considering withholding permission for organ procurement. (California Health & Safety Code 7155.7).
- AB2811 - Includes competent adult children among those who may be responsible for disposition of human remains (California Health & Safety Code 7100).

Goals

During the upcoming year, the Department of Coroner has the following goals:

- Plan the program for the meeting of the National Association of Medical Examiners, to be held in Los Angeles in October of 2005.
- Work with Internal Services Department to upgrade the Department's telephone system to voice-over internet protocol.
- Update the Department's cause of death coding method from ICD-9 to ICD-10.
- Conduct an internal review of the forensic pathology fellowship program to fulfill accreditation requirements



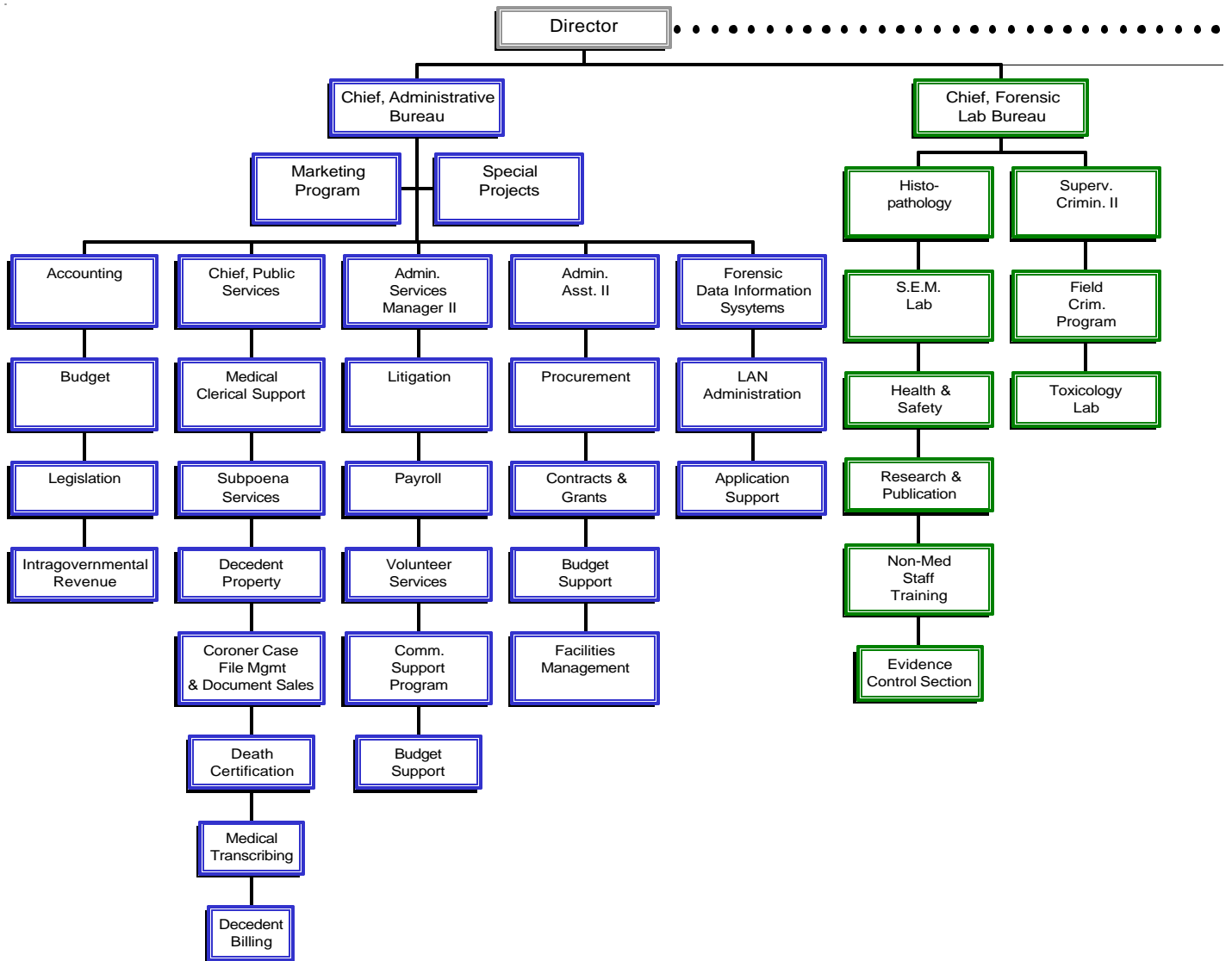
Anthony Hernandez
Director

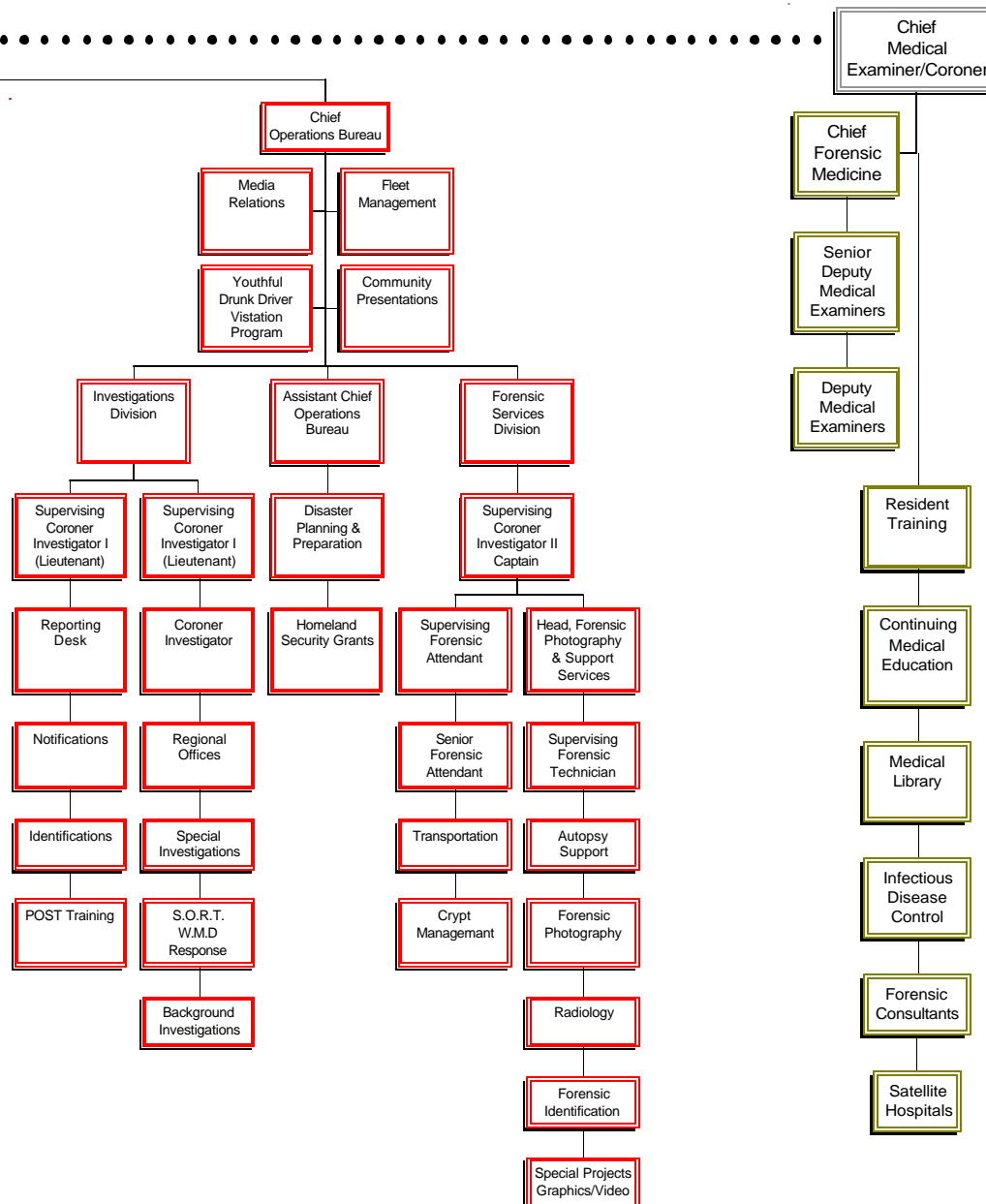


Lakshmanan Sathyavagiswaran, M.D.
Chief Medical Examiner - Coroner



Department







The Administrative Services Bureau is responsible for all departmental financial operations, departmental budget preparation, fiscal reports, personnel, payroll, litigation, procurement, accounting, revenue collection, marketing, volunteer services, affirmative action, contracts and grants, internal control



certification, workfare program, facilities management, and other related functions. The accounting section is responsible for all financial transactions performed by the Department of Coroner. All Auditor-Controller guidelines are followed as well as any departmental guidelines governing monetary issues.

FISCAL SERVICES

Accounting Section monitors all Departmental accounts, such as salary and benefits, overtime expenditures, services and supplies, and budget.

PROCUREMENT

Procurement is responsible for purchasing equipment, maintenance of buildings, contracts, budgetary support, monitoring of fixed assets, and inventory control.

HUMAN RESOURCES

Human Resources is responsible for personnel issues which are inherent to County government, such as benefits, processing examinations, filling vacant positions, litigation, workers compensation, volunteer services, payroll, community support programs such as job fairs, and budgetary support.



The Bureau is responsible for Fiscal Services, Procurement, Human Resources, Marketing, Contracts, Mortuary Billing, SIDS and Forensic Data Information Systems



MARKETING PROGRAM

"Skeletons in the Closet" has been operating since September 1993. Given the scarcity of resources at that time, revenue generation had to be considered to help offset monetary losses. The intent was to use monies raised to offset some of the costs associated with the Youthful Drunk Driver Visitation Program (YDDVP), as well as other Coroner needs. "Skeletons in the Closet" features a complete line of quality souvenir items, such as beach towels, shirts, toe tags, and much more. The items are available to the public via Web site at LACORONER.COM or by calling (323) 343-0760.

CONTRACT PROGRAMS

The Department administers contracts and agreements for various functions, such as tissue harvesting, regional offices, satellite hospitals, histopathology, transcribing, contract physicians, and urine drug screening for the Los Angeles County Superior Court. The staff monitors and studies Department operations in the continuing evaluation of the appropriateness of contracting for other functions.

MORTUARY BILLING PROGRAM

The Department now utilizes the services of the various mortuaries to bill for transportation and storage costs at the time services are being billed to the families. This has improved the collection rate, dramatically raising revenues.

SIDS PROGRAM (SB90)

The Department participates in the Sudden Infant Death Syndrome (SIDS) Interagency Council, and actively recovers cost from the State for fulfilling SIDS protocol requirements.

FORENSIC DATA INFORMATION SYSTEMS

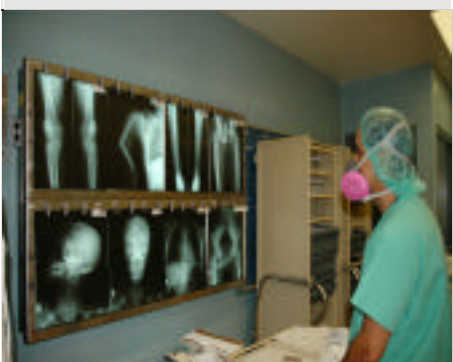
The mission of Forensic Data Information Systems is to enhance and support the Department's long-range goals, mission critical business goals and objectives through the administration, project management, and expansion of information technology-related applications and services, including, where appropriate, the delivery of services to agencies referred through appropriate 24/7 e-government technologies.

The FDIS is also responsible for network, database and application administration, preparation of statistics and general client support. The FDIS is responsible to ensure that the Department is in alignment with the County-wide strategic planning effort to conduct county business electronically and maintain compliance with the technological directives as stipulated by the County's Chief Information Officer. The FDIS manages the information technology efforts of subcontractors in the implementation and support of new technologies such as e-commerce content management and voice over internet protocol (VoIP). ■

**Administrative Services
1104 N. Mission Road
Los Angeles, CA 90033
Tel: 323 343 0784
Fax: 323 343 2213**



The Forensic Medicine Bureau's full-time permanent staff consists of board certified forensic pathologists who are responsible for the professional medical investigation and determination of the cause



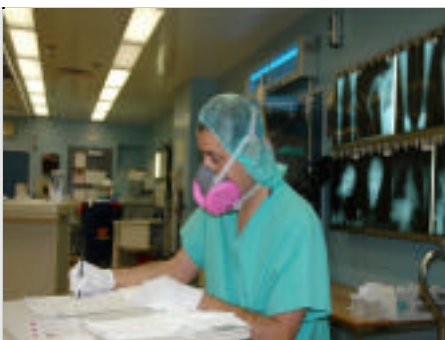
and mode of each death handled by the department. Our physicians are experts in the evaluation of sudden unexpected natural deaths and unnatural deaths such as deaths from firearms, sharp and blunt force trauma, etc. Physicians are frequently called to court to testify on cause of death and their medical findings and interpretations, particularly in homicide cases. In addition, the division has consultants in forensic neuropathology, archeology, odontology, anthropology, anesthesiology, pediatrics, surgery, ophthalmologic pathology, pulmonary pathology, pediatric forensic pathology, cardiac pathology, emergency room medicine, psychiatry, psychology and radiology to assist the deputy medical examiners in evaluating their cases.

MEDICAL EDUCATION

The Department is approved by the California Medical Association for Continuing Medical Education activities.

HEALTH & SAFETY/RISK MANAGEMENT

The Department has implemented an aggressive health & safety committee and risk management program, which has significantly reduced work-related injuries.





ICAN

The Department participates in the Interagency Council for Child Abuse and Neglect. This Department is the host of the monthly Child Death Review Committee of ICAN.

IDENTIFICATION OF UNIDENTIFIED BODIES (SB90)

The Department participates in a state-mandated program to examine dental records and collect appropriate specimens for the identification of John and Jane Does.

MEDICAL EXAMINER CORONER ALERT PROJECT

The Department of Coroner reports to the Consumer Product Safety Commission all deaths resulting directly from unsafe consumer products.

RESIDENCY PROGRAM

The Medical Division of the Department of Coroner has an Accreditation Council for Graduate Medical Education approved forensic pathology residency program designed to train deputy medical examiners and prepare them for board certification while performing medical investigations under appropriate supervision.

SCUBA PROGRAM

The Department staff participates in the Los Angeles County Interagency Scuba Committee to investigate and develop programs to prevent future scuba diving fatalities.

SIDS PROGRAM (SB90)

The Department participates in the Sudden Infant Death Syndrome (SIDS) Interagency Council, and actively recovers cost from the state for fulfilling SIDS protocol requirements.

TISSUE HARVESTING/ORGAN TRANSPLANTATION

This program provides corneas and other tissues to all in need in our community through coordinated efforts with various tissue banks and hospitals. After family consent is obtained, our medical staff provides review of organ and tissue procurement in Coroner's cases. In addition, the program makes tissue available to low-income and indigent patients at county hospitals at no cost to the patients or hospitals.

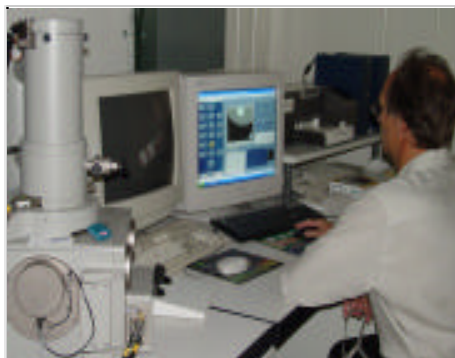
UNIVERSITY HOSPITAL PATHOLOGY RESIDENT TRAINING PROGRAM

We offer the opportunity for pathology residents from local university affiliated hospitals (USC, UCLA, and others) to train in our office with costs paid by the hospitals. This program fosters positive relationships with the university hospitals' pathology departments, and improves the standard of practice of forensic medicine in general, as these pathology residents will be practicing in the community when they finish training. ■

*Forensic Medicine
1104 N. Mission Road
Los Angeles, CA 90033
Tel: 323 343 0520
Fax: 323 225 2752*



The Forensic Science Laboratories Bureau is responsible for the identification, collection, preservation, and analysis of physical and medical evidence associated with Coroner's cases. Our mission is to



conduct a comprehensive scientific investigation into the cause and manner of any death within the Coroner's jurisdiction. This is accomplished through the chemical and instrumental analysis of physical and medical evidence.



Our goal is to provide our medical examiners, families of decedents, outside investigating agencies, and the judicial system with timely, accurate, and state-of-the-art forensic analyses, and to provide expert interpretation of those analyses.



The Forensic Laboratory is fully accredited by the prestigious American Society of Crime Laboratory Directors, and our Forensic Blood Alcohol testing program is licensed by the State of California.

CRIMINALISTICS

Our team of specially trained forensic scientists is on call twenty-four hours a day to respond to crime scenes for the proper documentation, collection, and preservation of physical evidence.



The Forensic Laboratory is fully accredited by the prestigious American Society of Crime Laboratory Directors



HISTOLOGY

This laboratory facilitates the preparation of gross tissue specimens for microscopic examination by the medical staff. This includes hematoxylin and eosin stains, special stains, and immunohistochemical stains. Through the microscopic examination of tissue, our forensic pathologists can determine the age and degree of injury, diagnose disease including cancers, evaluate cellular variation in tissue, and identify the presence of bacteria, medical disorders, and toxins such as asbestos.

TOXICOLOGY

Using state of the art equipment and methods, the toxicology laboratory conducts chemical and instrumental analyses on post-mortem specimens to determine the extent that drugs may have contributed to the cause and manner of death. The laboratory's experienced forensic toxicologists offer expert drug interpretation, which assists the medical examiners in answering questions like what drug was taken? How much and when was the drug taken? Did the drug contribute to the cause and/or manner of death? Was the drug use consistent with therapeutic administration, or was it an abuse? If the death is due to a drug overdose, was it intentional or accidental?

SCANNING ELECTRON MICROSCOPY LAB

Our SEM laboratory conducts gunshot residue (GSR) analyses and tool mark evaluations. Using a scanning electron microscope equipped with an energy dispersive x-ray detector, GSR analysis is used to determine whether an individual may have fired a weapon. Our laboratory also performs GSR analyses for many law enforcement agencies throughout California.

Tool mark analysis involves the evaluation of trauma to biological material, especially bone and cartilage, as to the type of instrument that might have produced the trauma. This not only helps our pathologists understand the circumstances of a death, but also aids the law enforcement agency in their criminal investigation.

EVIDENCE CONTROL

Our evidence personnel are responsible for maintaining the integrity and chain of custody for all of the evidence collected from Coroner's cases. All of the physical evidence collected by Department investigators, criminalists, pathologists, forensic technicians and forensic attendants is documented and maintained by the evidence control unit. ■





This bureau is responsible for the 24-hour day, 7-day week operations of many direct services provided by the department. The Bureau oversees Investigations, Forensic Photography and Support, and the Forensic Services Division. In addition, the bureau is responsible for disaster and community services, fleet management, public information and other ancillary programs such as regional offices and the Youthful Drunk Driver Visitation Program (YDDVP).



Coroner Investigators are also responsible for testimony in court and deposition on Coroner cases along with preparation of investigative reports for use in the determination of cause and mode of death.

Under state law, all Coroner Investigators are sworn peace officers. The Coroner Investigator must meet the same stringent hiring standards as any other California law enforcement agency. The Department of Coroner is a California Peace Officer Standards and Training (P.O.S.T.) certified agency.

IDENTIFICATION OF UNIDENTIFIED BODIES (SB90)

The department participates in a state-mandated program to examine dental records of known missing persons to aid in the identification of John and Jane Does. In addition, more recent changes in the law have required that DNA specimens be collected from unidentified remains and sent to the



State

of

Cal-

The Bureau oversees Investigations, Forensic Photography and Support, and the Forensic Services Division

i n



NURSING HOME DEATHS (SB90)

The department participates in a state-mandated program to investigate certain nursing home deaths to determine whether a death may be certified as natural by a private physician or handled as a Coroner's case.

PEACE OFFICER STANDARDS AND TRAINING (P.O.S.T.)

The California State Commission on Peace Officer Standards and Training (P.O.S.T.) establishes minimum standards for training requirements for peace officers. We comply with those standards in all advanced training that is offered through the Department of Coroner through the annual West Coast Seminar or other specialized training such as Skeletal and Buried Body Recovery.

REGIONALIZATION-SATELLITE OFFICES

Investigative capabilities have been extended to offices in the Antelope Valley, Santa Clarita Valley and South Bay areas of Los Angeles County. Efforts are underway to expand regional services to the eastern portion of Los Angeles County. Regional offices provide a more rapid Coroner's response to the scene of death, which results in rapid mitigation of traffic other public conveyance obstructions.

YOUTHFUL DRUNK DRIVER VISITATION PROGRAM (YDDVP)

The Department of Coroner has presented the YDDVP program since 1989 as an alternative sentence option that can be considered by a judicial officer. The program is designed to present to the participants the consequences of certain behavior in a manner that has an impact and is also educational. The program is currently offered up to 12 times per month and includes classes presented completely in Spanish.

DISASTER PREPARATION AND RESPONSE

The program ensures appropriate departmental response as one of the eight lead county agencies to major disasters and significant smaller incidents that involve multiple fatalities requiring successful operation of an Emergency Operation Center (EOC) and field command posts. These efforts may include coordinated activity with major airports, homeland defense agencies, law enforcement, the State Office of Emergency Services, and mutual aid from Coroners throughout the state. The program provides planning support through participation in emergency planning and exercises and also through up-to-date manuals. A plan has been developed to form public/private emergency response partnership with local funeral and cemetery directors for a mass fatality management response system. The Department maintains emergency communications equipment, which includes a command post trailer, County Wide Integrated Radio System (CWIRS) radio communications, a mobile command post, and appropriate ancillary communications equipment. The department also has eleven disaster cache trailers situated throughout the County. The Department has emergency short-wave radio communications ability as well.



INVESTIGATIONS

The Investigations Division responds to the scenes of death throughout Los Angeles County twenty-four hours a day, seven days per week. It is the responsibility of the Coroner Investigator to function as the eyes



and ears of the Deputy Medical Examiner, ensure that State law is followed with respect to Coroner cases, and be the advocate for the deceased person. Due to the diverse caseload in Los Angeles County, the Coroner Investigator is in the important position of seeing every death that occurs under other than natural conditions and is often the first to identify serial deaths and consumer product safety issues.

SPECIAL OPERATIONS AND RESPONSE TEAM (SORT)

The Department of Coroner has fielded a specialized response unit comprised of Coroner Investigators, Coroner Criminalists, and Coroner Consultants in Anthropology and Archeology and as needed, Forensic Attendants and Forensic Technician Photographers.

The S.O.R.T. team has special purpose vehicles fully equipped to handle certain types of cases thoroughly and as rapidly as possible.

The S.O.R.T. team responds to cases requiring specialized recovery and scene processing techniques such as those required in aircraft crashes, buried bodies, scattered human remains and fires and





also assists law enforcement agencies in general searches for scattered human remains or possible burial sites.

FORENSIC PHOTOGRAPHY & SUPPORT DIVISION

This division is responsible for providing direct support in the autopsy room to the deputy medical examiners. Staff duties include, but are not limited to, preparation of the bodies for medical examination and autopsy, assisting the deputy medical examiners in the performance of the autopsy, preparation and gathering of toxicology specimens, x-ray and photography and preparation of bodies for release to a mortuary.

The division is also home to the Forensic Fingerprint Identification Unit that is responsible for post-mortem dental x-rays and specialized fingerprint processing to aid in the identification of Jane, John and Undetermined Does.

Personnel who have been specially trained also fulfill specialized audio-visual and graphic production requirements for the entire department as well as the courts.

FORENSIC SERVICES DIVISION

Personnel assigned to this unit are responsible for the transportation, processing, storage, and release of bodies that are under the jurisdiction of the Coroner. Bodies may be recovered from any death scene, in almost any environment imaginable, including those in public view, private homes, and hospitals. Decedent processing includes obtaining the height and weight of bodies, the collection, documentation and safekeeping of personal effects, and the collection of both physical and medical evidence, fingerprinting of decedents using LIVE-SCAN technology and place-

ment of identification tags on the body. Bodies are maintained in refrigerated crypts while awaiting examination and release to mortuaries or for county cremation.

The Decedent Services Unit is responsible for crypt management of human remains prior to release for photography, x-ray and autopsy. Additionally, staff are responsible for the accountability of all human remains and specimens stored in the crypt areas. ■





Department of Coroner

2003

Public Services Division

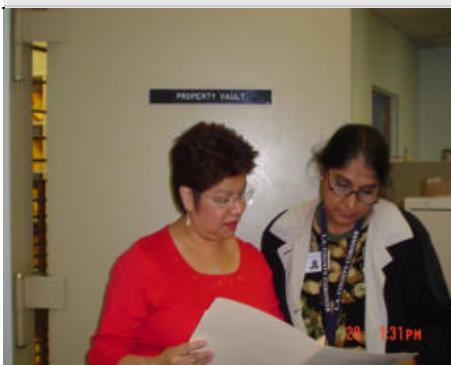
This division is responsible for Coroner case file management, revenue collection (document sales, decedent billing, etc.), and interaction with the public both telephonically and at the front lobby reception area. In addition to providing information and copies of autopsy reports, Public Ser-



vices staff offers many services to the public. These services include preparation of "Proof of Death" letters to verify that a death is being investigated by the Coroner and "Port of Entry" letters to confirm that a decedent had no communicable disease, necessary for the decedent's admission into a foreign country after death.

RECORDS SECTION

Records Section is responsible for Coroner Case file control, retention, document sales, and transportation billing. The Section handles over 2,500 telephone inquiries per month from the public and other agencies requesting information and Coroner reports. Revenue generated from documents, microscopic slides, photograph sales and transportation billing for a one year period totals over \$1,200,000.00. The Coroner is mandated by Government Code to retain all files permanently; consequently the Department maintains 100+ years of records which are accessed on a regular basis at the request of the public. Since 1991 all inactive case files have been scanned (mi-



Law and Science Serving the Community



crofilm was previously utilized). Approximately 16,000 pages are copied from optical disk and microfilm to fill requests received from the public each year.

DEATH CERTIFICATION & MEDICAL/CLERICAL SECTION

The division is responsible for the completion and daily issuance of the Death Certificates to the mortuaries and preparation of amendments stating the final cause of death. Medical/Clerical Section is responsible for reporting SIDS cases to the state and local health agencies for follow up by those agencies. This section also provides secretarial and clerical support to the Deputy Medical Examiners.

MEDICAL TRANSCRIBING SECTION

This section is responsible for the transcription of the autopsy report protocols, microscopic slide reports, neuropathology reports, etc. An outside contract is utilized for routine transcription and an in-house staff of three full-time employees is employed to handle rush, high-priority and sensitive cases. In a one-year period over 2,000 cases are transcribed by request of the law enforcement agencies, the families, hospitals and other outside agencies.

PERSONAL PROPERTY SECTION

Personal property of all decedents is brought to the Personal Property Section and safeguarded in a vault until release to the decedent's next-of-kin. The Department has three Personal Property Custodians who are responsible to receive and inventory the personal effects, contact the next-of-kin and arrange for delivery of the personal effects to the decedent's family. The Office of the Public Administrator is consulted when next-of-kin resides out of state or is unknown. The Custodians are also responsible for disposal of all unclaimed personal effects.

SUBPOENA CONTROL

Approximately 4,000 subpoenas are received and processed by the Public Services Division Subpoena Control Section in a one-year period. This unit is responsible for the scheduling of all Deputy Medical Examiners for court appearances, depositions and appointments with law enforcement, district attorney and public defender staff and family members. The revenue generated by civil witness fees and collected by this section total approximately \$55,000 per year.



Public Services
1104 N. Mission Road
Los Angeles, CA 90033
Tel: 323 343 0512
Fax: 323 223 5630



Los Angeles County



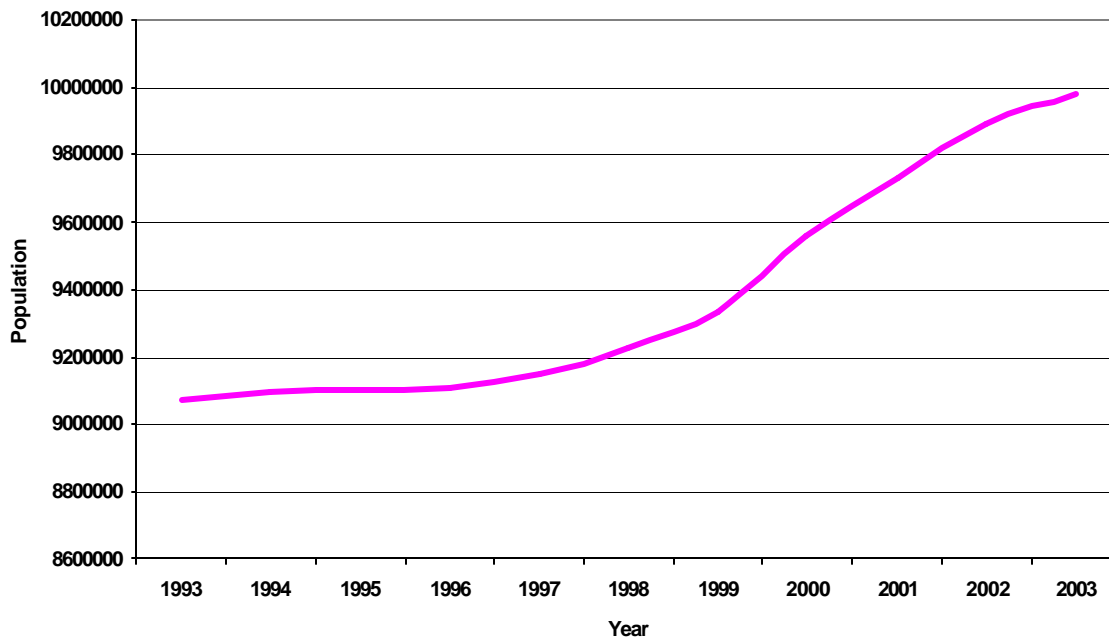
Death Statistics



Topic	Page
Population of Los Angeles County.....	22
Reported and Accepted Cases	23
Final Mode of Coroner's Cases.....	24
Death Rates per 100,00 Population.....	25
Modes for Child Death.....	26
Statistics Required by NAME.....	27
Coroner Cases by Age.....	28
Coroner's Cases by Gender.....	29
Coroner's Cases by Race.....	30
Mode of Death by Month.....	31
Racial Distribution for Each Mode.....	32
Mode of Death by Month.....	33
Accidental Deaths.....	34
Transport Accidents.....	35
Accidental Falls.....	36
Homicidal Deaths	37
Suicidal Deaths.....	38
Academic Activities.....	39



Population of Los Angeles County, 1993-2003



<u>Year</u>	<u>Population</u>
1993	9,072,200
1994	9,095,200
1995	9,103,900
1996	9,104,700
1997	9,147,100
1998	9,225,800
1999	9,330,110
2000	9,559,600
2001	9,731,000
2002	9,889,300
2003	9,979,361

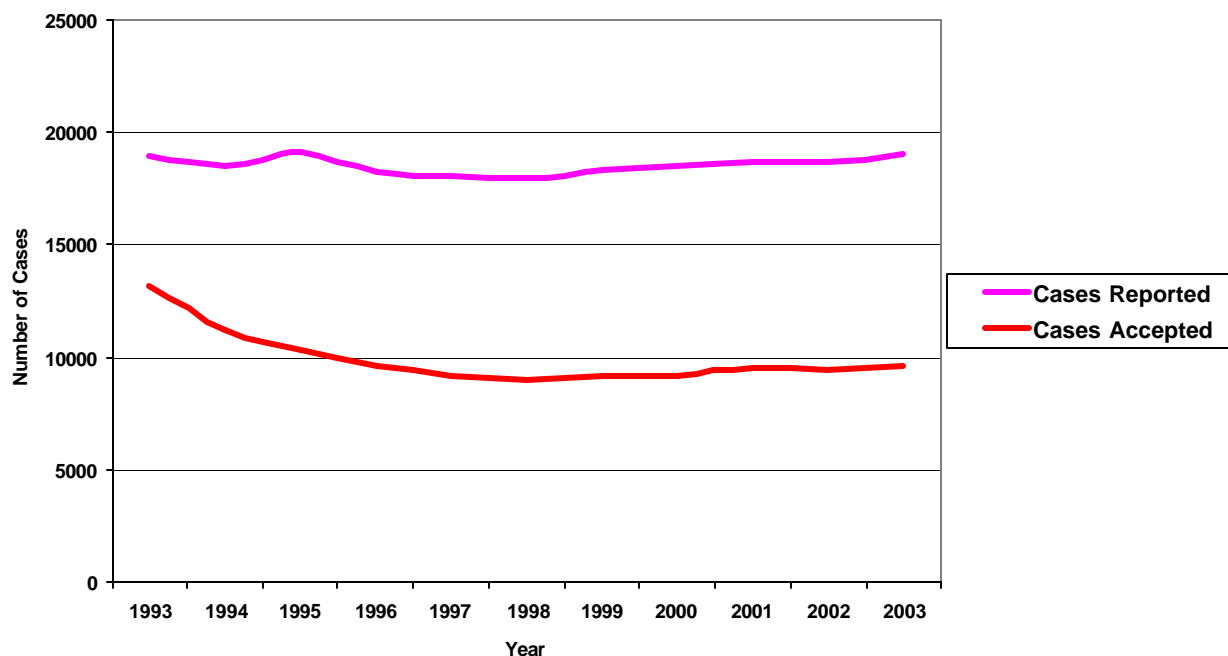
Sources:

State of California, Department of Finance. Population Estimates for Cities, Counties and State, 2001-2005. Sacramento CA, May 2005.

State of California, Department of Finance. Revised Historical City, County and State Population Estimates, 1991-2000, with 1990 and 2000 Census Counts. Sacramento CA, March 2002.



Number of Reported and Accepted Cases per Year, 1993-2003

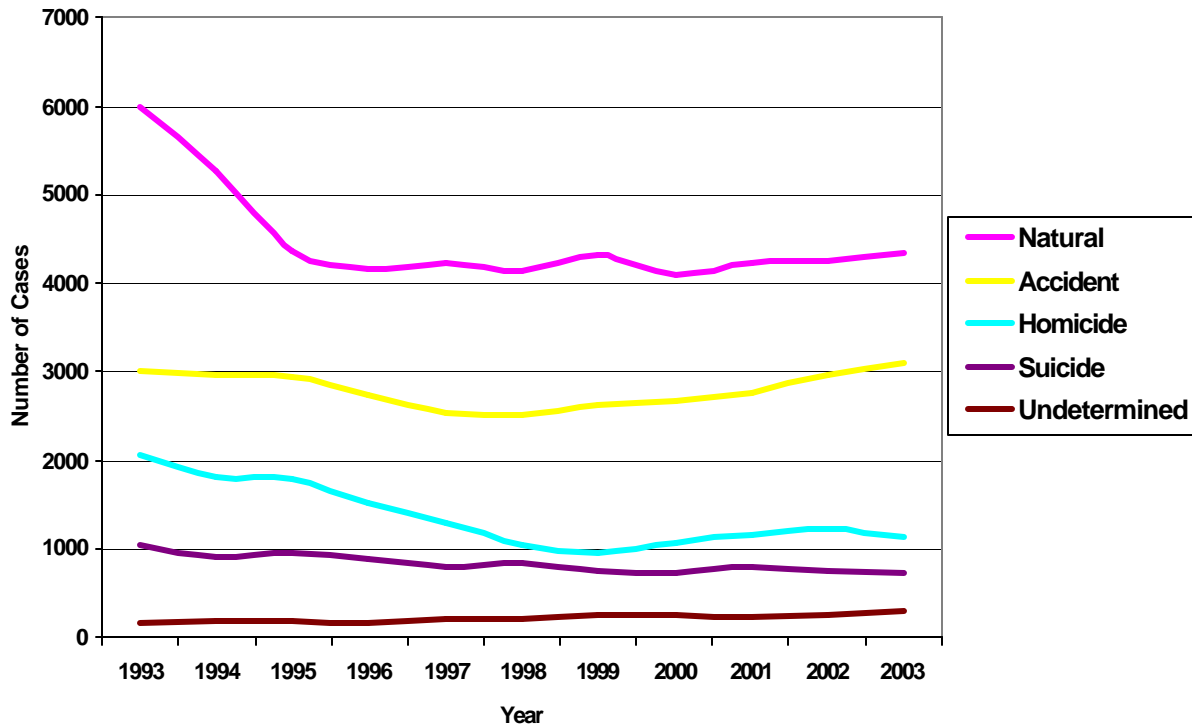


<u>Year</u>	<u>Cases Reported</u>	<u>Cases Accepted</u>
1993	19,005	13,217
1994	18,550	11,213
1995	19,160	10,347
1996	18,295	9,656
1997	18,113	9,202
1998	17,924	8,981
1999	18,362	9,197
2000	18,512	9,156
2001	18,665	9,591
2002	18,665	9,470
2003	19,039	9,620



Final Mode of Coroner's Cases

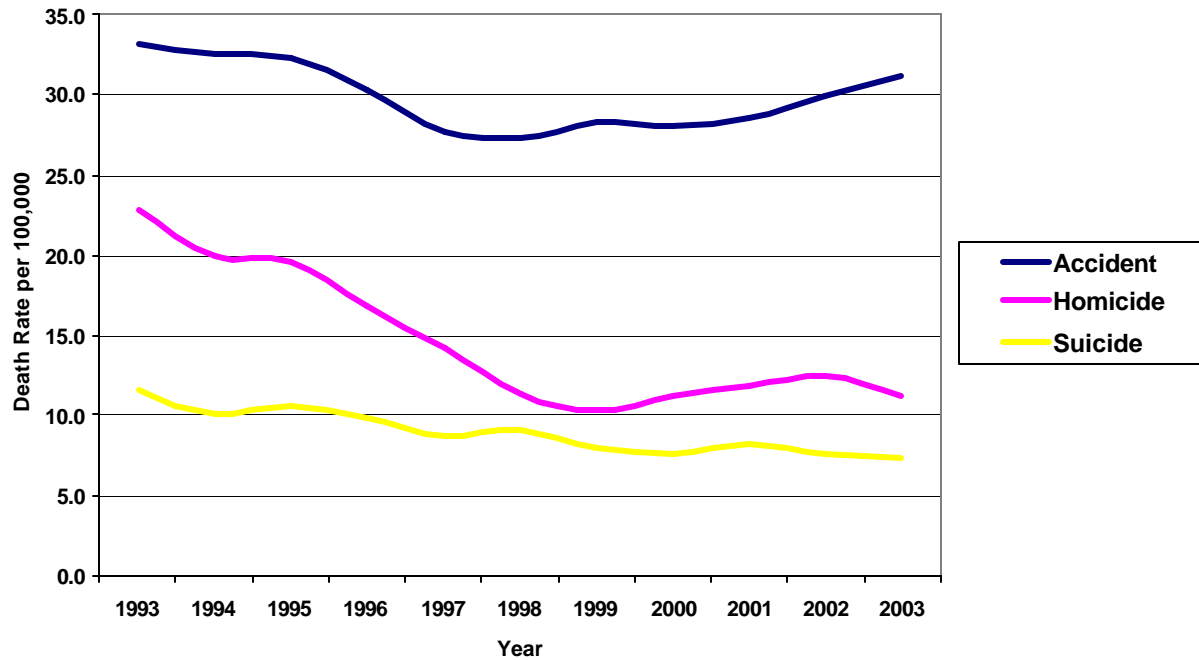
Final Mode of Coroner's Cases, 1993-2003



<u>Year</u>	<u>Natural</u>	<u>Accident</u>	<u>Homicide</u>	<u>Suicide</u>	<u>Undetermined</u>
1993	6,000	3,005	2,068	1,058	171
1994	5,265	2,964	1,818	916	196
1995	4,365	2,942	1,788	968	177
1996	4,166	2,757	1,538	891	165
1997	4,226	2,542	1,301	798	201
1998	4,139	2,513	1,050	838	210
1999	4,331	2,641	960	744	247
2000	4,094	2,681	1,078	729	263
2001	4,224	2,777	1,159	807	226
2002	4,261	2,955	1,232	757	265
2003	4,344	3,110	1,127	732	279



Death Rates per 100,000 Population, 1993-2003

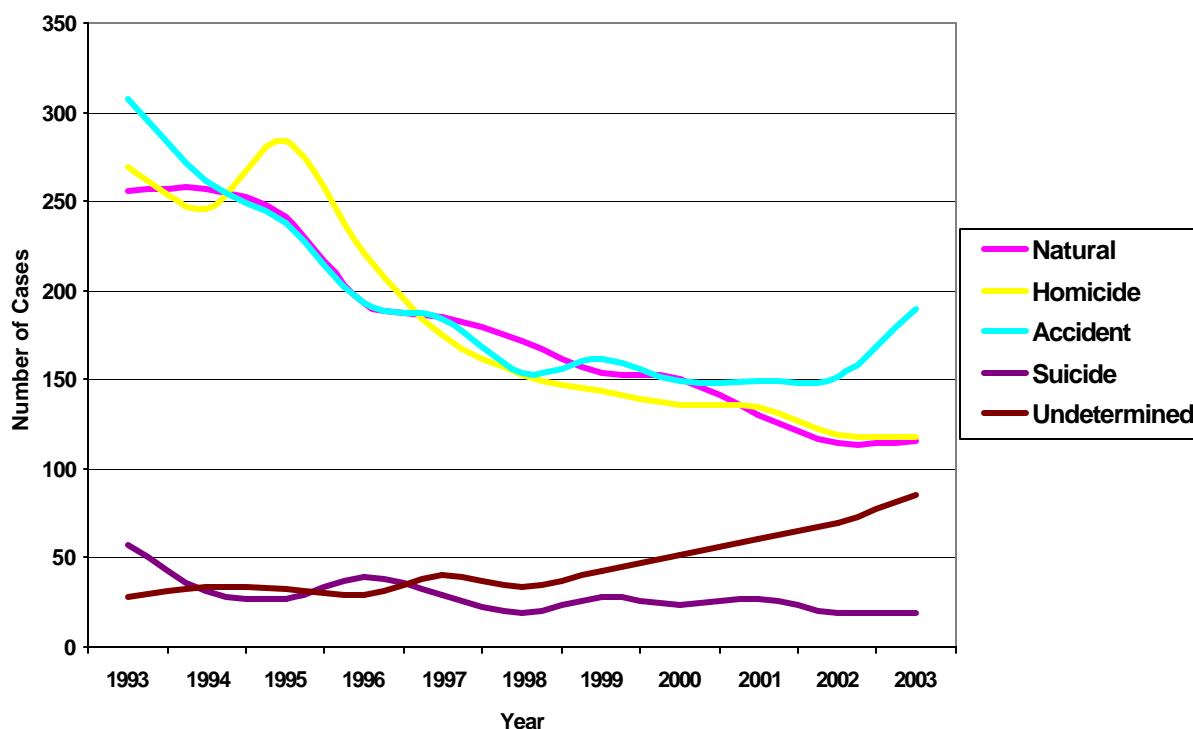


<u>Year</u>	<u>Accident</u>	<u>Homicide</u>	<u>Suicide</u>
1993	33.1	22.8	11.7
1994	32.6	20.0	10.1
1995	32.3	19.6	10.6
1996	30.3	16.9	9.8
1997	27.8	14.2	8.7
1998	27.2	11.4	9.1
1999	28.3	10.3	8.0
2000	28.0	11.3	7.6
2001	28.5	11.9	8.3
2002	29.9	12.5	7.7
2003	31.2	11.3	7.3



Modes for Child Death

Modes for Child Death (Ages Under 18), 1993-2003



<u>Year</u>	<u>Natural</u>	<u>Homicide</u>	<u>Accident</u>	<u>Suicide</u>	<u>Undetermined</u>
1993	256	269	307	57	28
1994	257	246	261	31	34
1995	241	284	238	27	32
1996	193	221	193	39	29
1997	185	175	184	29	40
1998	172	153	154	19	34
1999	154	144	162	28	43
2000	150	136	149	24	52
2001	130	135	149	27	61
2002	114	119	152	19	70
2003	116	118	190	19	85

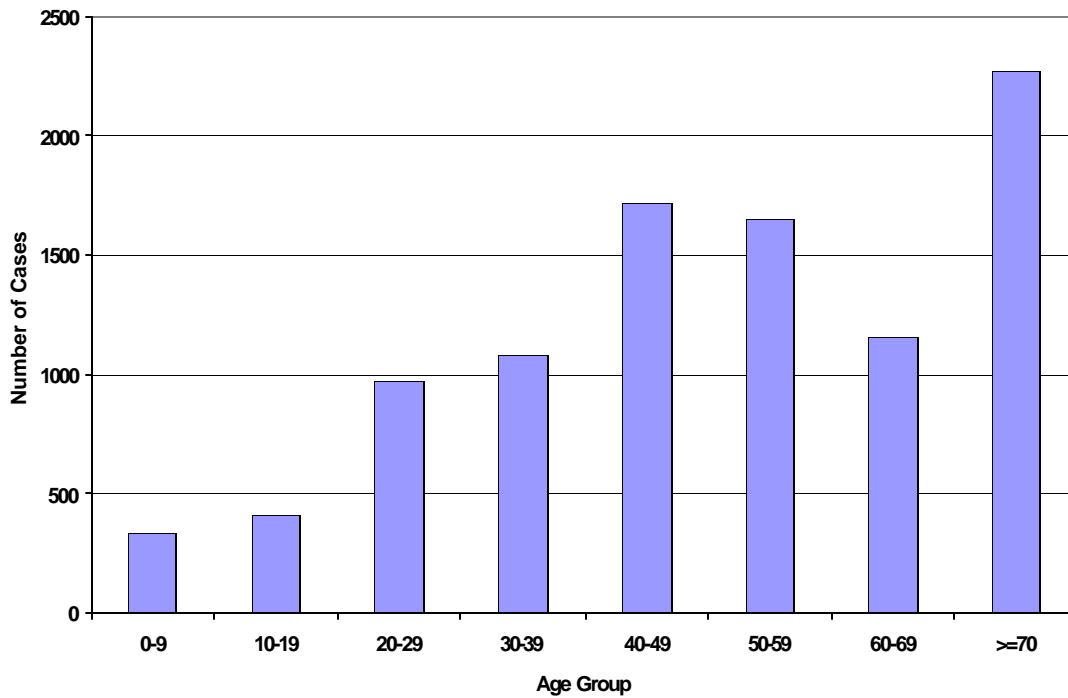


Statistics Required by National Association of Medical Examiners, 2003

Number of deaths reported:	19,039
Number of cases accepted:	9,592
Number of cases by manner of death:	
Accident:	3,110
Homicide:	1,127
Natural:	4,344
Suicide:	732
Undetermined:	279
Scene visits:	3,306
Number of bodies transported:	7,380
External examinations:	
By physician:	2,391
By investigator:	2,360
Partial autopsies:	589
Complete autopsies	4,252
Hospital autopsies under ME jurisdiction:	2
Cases where toxicology was performed:	5,374
Bodies unidentified after examination:	21
Organ and tissue donations:	
Total transplanted organs:	230
Total tissues donated:	254
Unclaimed bodies:	583
Exhumations:	5



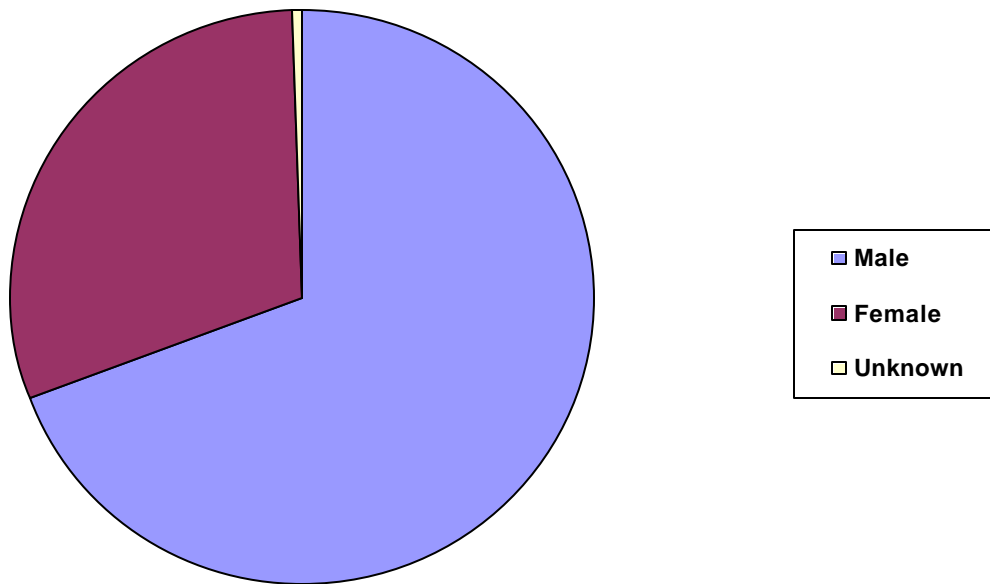
Number of Coroner's Cases by Age, 2003



<u>Age</u>	<u>Number of Cases</u>
0-9	341
10-19	406
20-29	973
30-39	1,076
40-49	1,719
50-59	1,651
60-69	1,155
>=70	2,271
Total	9,592



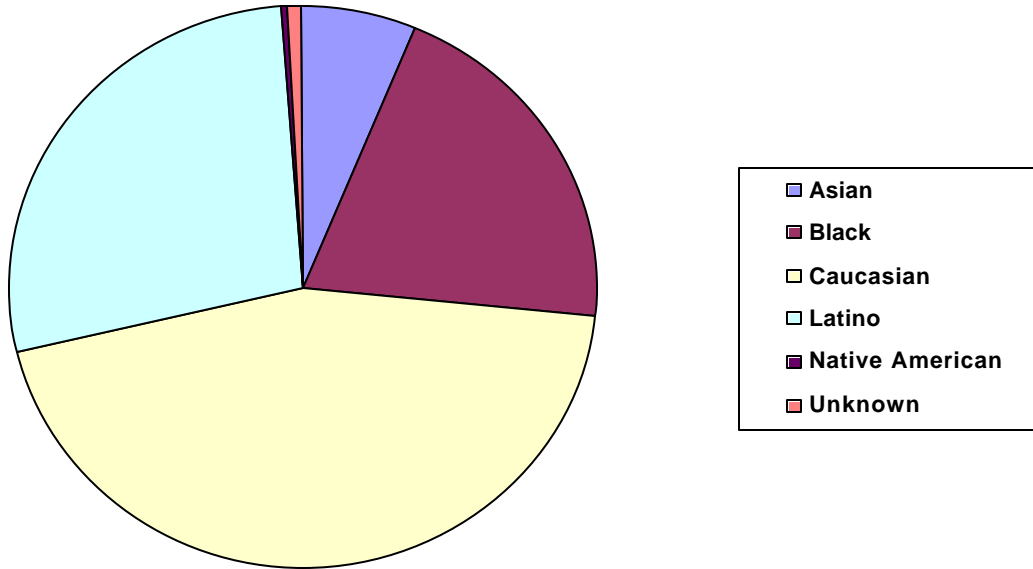
Coroner's Cases by Gender, 2003



<u>Gender</u>	<u>Number of Cases</u>
Male	6,660
Female	2,913
Unknown	19
Total	9,592



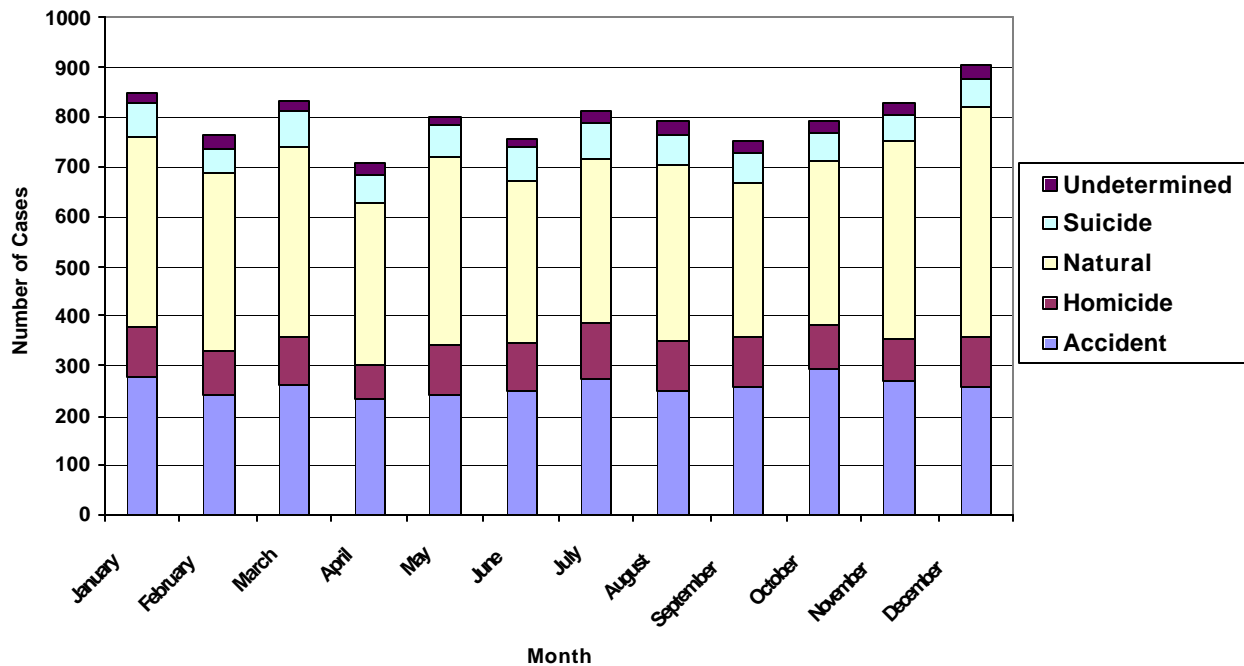
Coroner's Cases by Race, 2003



<u>Race</u>	<u>Number of Cases</u>
Asian	607
Black	1,950
Caucasian	4,275
Latino	2,673
Native American	30
Unknown	57
Total	9,592



Mode of Death by Month, 2003

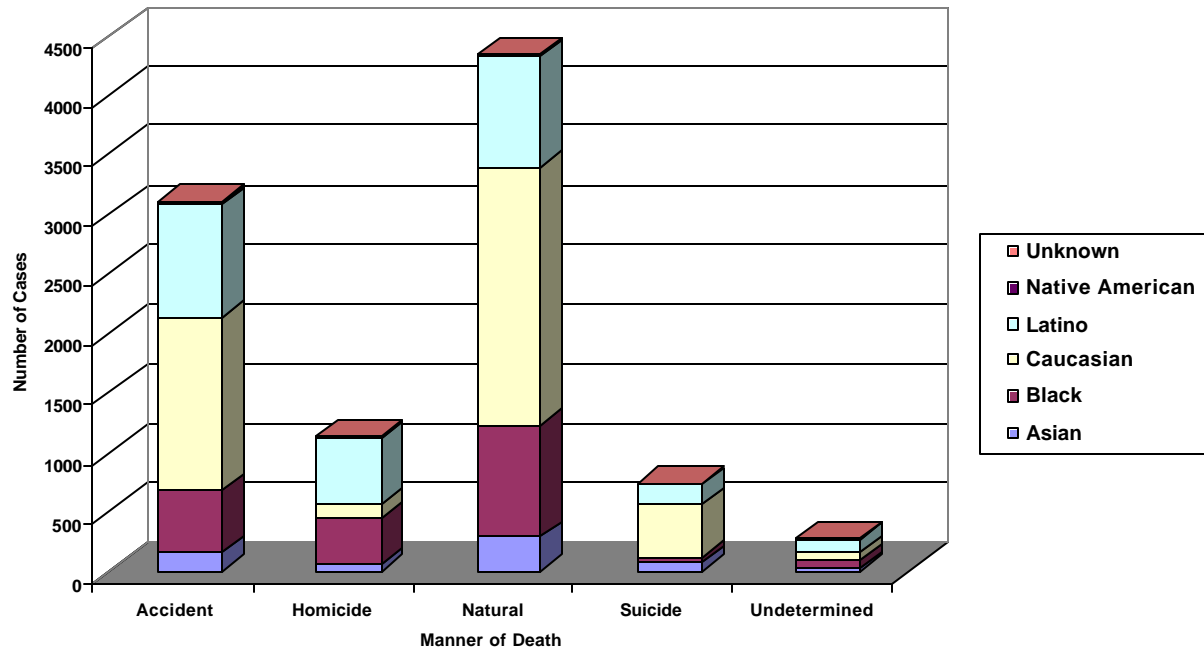


Mode of Death by Month

Month	Accident	Homicide	Natural	Suicide	Undetermined	Total
January	277	101	383	68	18	847
February	241	88	361	48	26	764
March	261	97	382	73	20	833
April	234	71	323	59	22	709
May	240	101	379	63	19	802
June	250	94	327	72	15	758
July	275	109	332	69	29	814
August	250	99	355	61	24	789
September	260	100	305	60	26	751
October	293	88	331	54	26	792
November	270	82	401	51	22	826
December	259	97	465	54	32	907
Total	3,110	1,127	4,344	732	279	9,592



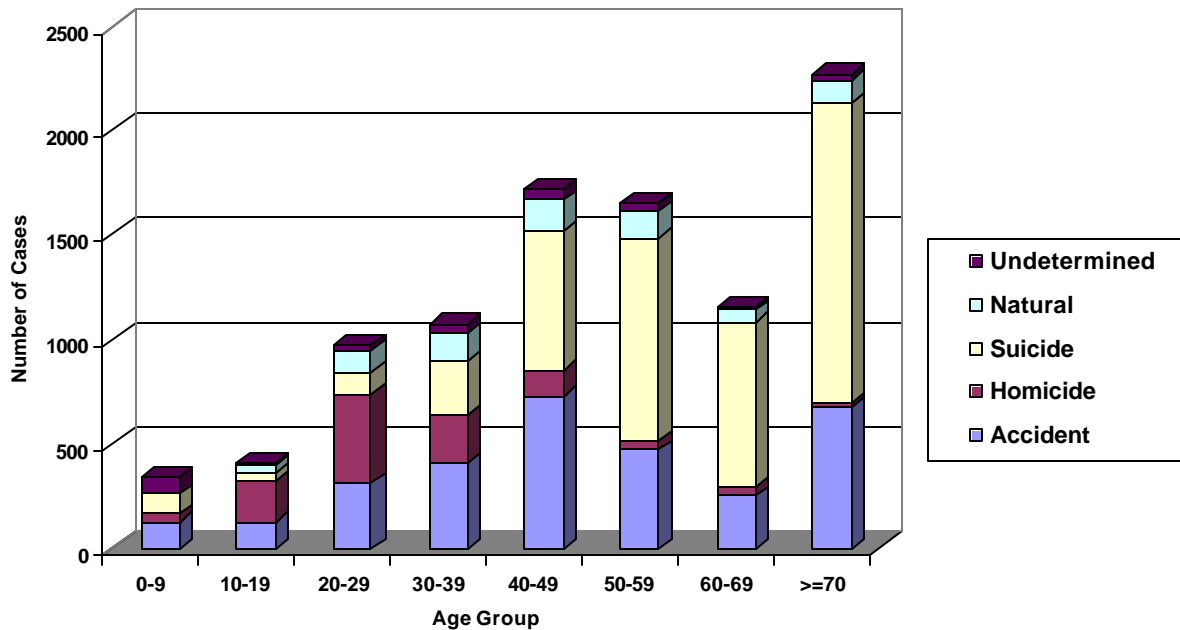
Racial Distribution for Each Mode, 2003



	<u>Accident</u>	<u>Homicide</u>	<u>Natural</u>	<u>Undetermined</u>	<u>Total</u>
Asian	170	63	285	19	607
Black	505	383	946	65	1,950
Caucasian	1,462	124	2,159	85	4,275
Latino	943	545	930	96	2,673
Native American	13	1	12	2	30
Unknown	17	11	12	12	57
Total	3,110	1,127	4,344	279	9,592



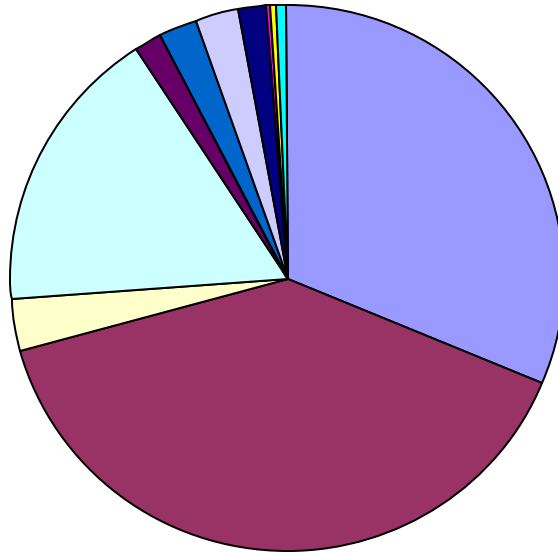
Mode Distribution for Each Age Group, 2003



Age	0-9	10-19	20-29	30-39	40-49	50-59	60-69	>=70	Total
Accident	125	125	314	413	732	474	255	672	3,110
Homicide	42	197	428	228	123	44	39	26	1,127
Suicide	96	34	103	253	665	971	788	1,434	4,344
Natural	0	40	107	138	149	128	58	112	732
Undetermined	78	10	21	44	50	34	15	27	279
Total	341	406	973	1,076	1,719	1,651	1,155	2,271	9,592



Accidental Deaths, 2003



- Transport Accident
- Drugs and Alcohol
- Therapeutic Misadventure
- Fall
- Fire
- Hyperthermia/hypothermia
- Environmental Factors
- Drowning
- Choking and Suffocation
- Firearms
- Electrocution
- Other

<u>Type of Accident</u>	<u>Number of Cases</u>
Transport Accident	978
Drugs and Alcohol	1,217
Therapeutic Misadventure	94
Fall	532
Fire	53
Hyperthermia/hypothermia	6
Environmental Factors	66
Drowning	79
Choking and Suffocation	48
Firearms	8
Electrocution	11
Other	18
Total	3,110



Pedestrians

Collision with car, pick-up truck or van	238
Collision with heavy transport vehicle or bus	14
Collision with railway train or railway vehicle	5
Other and unspecified transport accidents	<u>9</u>
Total pedestrians	266

Pedal Cyclists

Collision with car, pick-up truck or van	27
Collision with heavy transport vehicle or bus	3
Collision with fixed or stationary objects	1
Fall from pedal cycle	5
Other and unspecified transport accidents	<u>1</u>
Total pedal cyclists	37

Motorcycle Riders

Collision with car, pick-up truck or van	53
Collision with heavy transport vehicle or bus	4
Collision with fixed or stationary object	21
Non-collision accident (fell or thrown)	10
Other and unspecified transport accidents	<u>1</u>
Total motorcycle riders	89

Car Occupants

Collision with car, pick-up truck or van	269
Collision with heavy transport vehicle or bus	34
Collision with railway train or railway vehicle	2
Collision with fixed or stationary object	153
Non-collision accident (fell or thrown)	58
Other and unspecified transport accidents	<u>8</u>
Total car occupants	524

Occupant of Pick-up Truck or Van

Collision with automobile	5
Collision with heavy transport vehicle or bus	3
Collision with fixed object	2
Non-collision accident (fell or thrown)	<u>5</u>
Total pick-up truck and van occupants	15

Other Transport Accidents

Occupant of heavy transport vehicle	5
Fall from horse	2
Train derailment	1
Specialized industrial vehicle (forklift)	2
Off-road vehicle	5
Water craft	4
Aircraft	20
Other and unspecified transport accidents	<u>8</u>
Total other transport accidents	47

Total Transport Accidents **978**

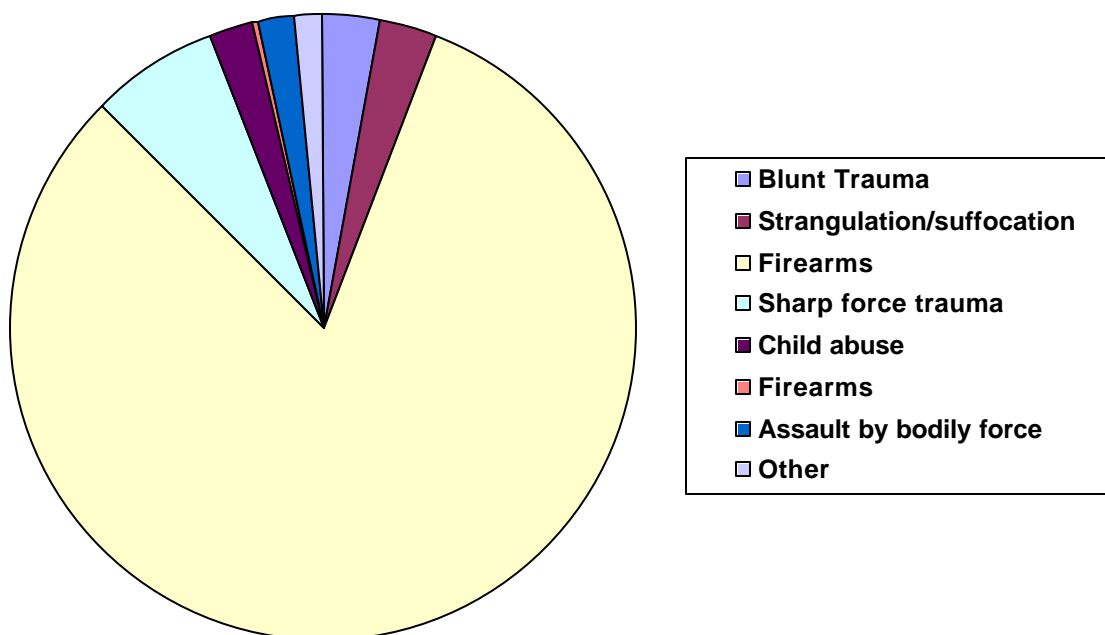


Accidental Falls, 2003

Fall on same level from slipping, tripping and stumbling	391
Fall involving skis	1
Fall due to collision with another person	5
Fall while being carried or supported by other persons	2
Fall involving wheelchair	13
Fall involving bed	15
Fall involving chair	6
Fall involving other furniture	4
Fall involving golf cart	1
Fall on and from stairs and steps	32
Fall on and from ladder	8
Fall from, out of or through building or structure	24
Fall from tree	3
Fall from cliff	1
Diving into water causing injury other than drowning	1
Other fall from one level to another	4
Other fall on same level	6
Unspecified fall	<u>1</u>
Total falls	532



Homicidal Deaths, 2003



Method of Homicide

Number of Cases

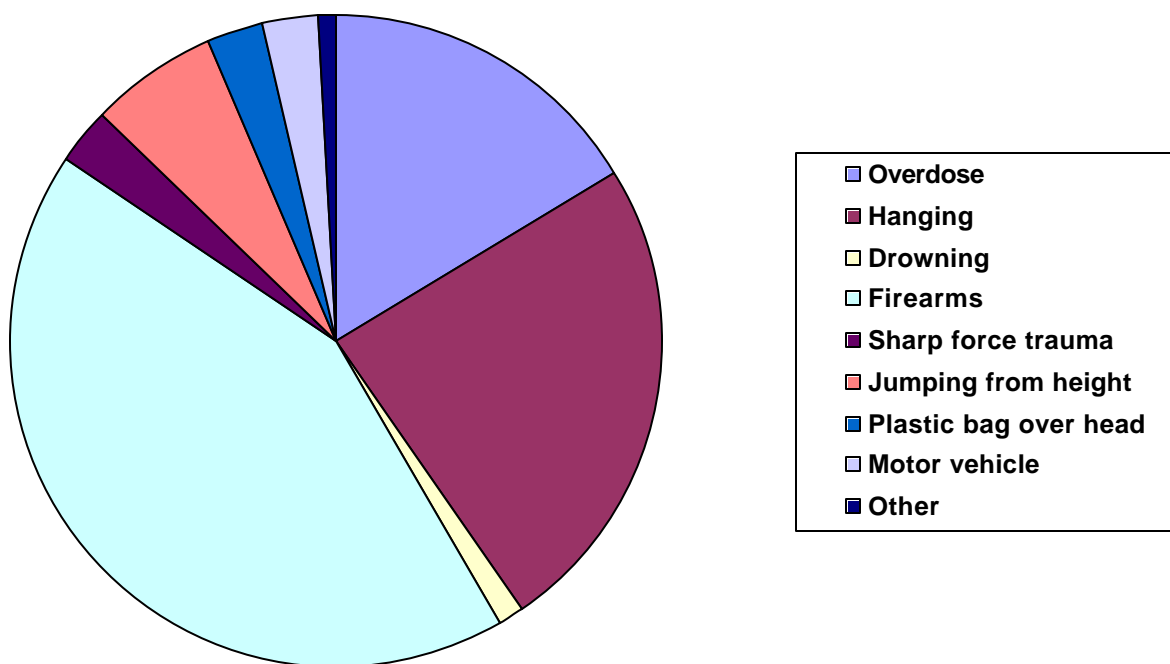
Blunt Trauma	34
Strangulation/Suffocation	35
Firearms	917
Sharp Force Trauma	76
Child Abuse	25
Firearms	2
Assault by Bodily Force	22
Other	16

Total	1,127
--------------	--------------

Homicidal Deaths



Suicidal Deaths, 2003



<u>Method of Suicide</u>	<u>Number of Cases</u>
Overdose	119
Hanging	176
Drowning	10
Firearms	313
Sharp Force Trauma	21
Jumping from Height	46
Plastic Bag Over Head	20
Motor Vehicle	21
Other	6
Total	732



ACADEMIC ACTIVITIES

Publications

JM Andrews, JP Gutstadt, HH Itabashi, SJ Dowell, MS Schuchardt, EA Miller, "Central Nervous System Consequences of an Unusual Body Disposal Strategy: Case Report and Brief Experimental Investigation", *Journal of Forensic Sciences* 2003 September; 48(5): 1153-1157.

TT Noguchi, L Sathyavagiswaran, "Contribution of the Medical Examiner or Coroner in Trauma Care: Physical Diagnosis, Foreign Bodies and Evidence", in *Trauma Secrets*, second edition, GP Naude, editor, Hanley & Belfus, Inc.: Philadelphia (2003).

Oral Presentations

EA Miller, E Arbuthnot, K Buffington, K Fritz, B Marrufo, LA Pena, M Sandberg, "The Los Angeles County Department of Coroner Special Operations Response Team: Case Examples of the Utility of Such Teams in Large Jurisdictions", American Academy of Forensic Sciences, Chicago, February 2003.

JP Gutstadt, L Sathyavagiswaran, B Stephens, "Drowning in a Toilet Bowl: An Uncommon Form of Suicide in Adults", National Association of Medical Examiners, San Jose, California, September 2003.

TT Noguchi, "Financial Impacts of Death Investigations", National Association of Medical Examiners, San Jose, California, September 2003.

JK Ribe, "Sports-Related Deaths in One Pathologist's Practice 1998-2002", National Association of Medical Examiners, San Jose, California, September 2003.

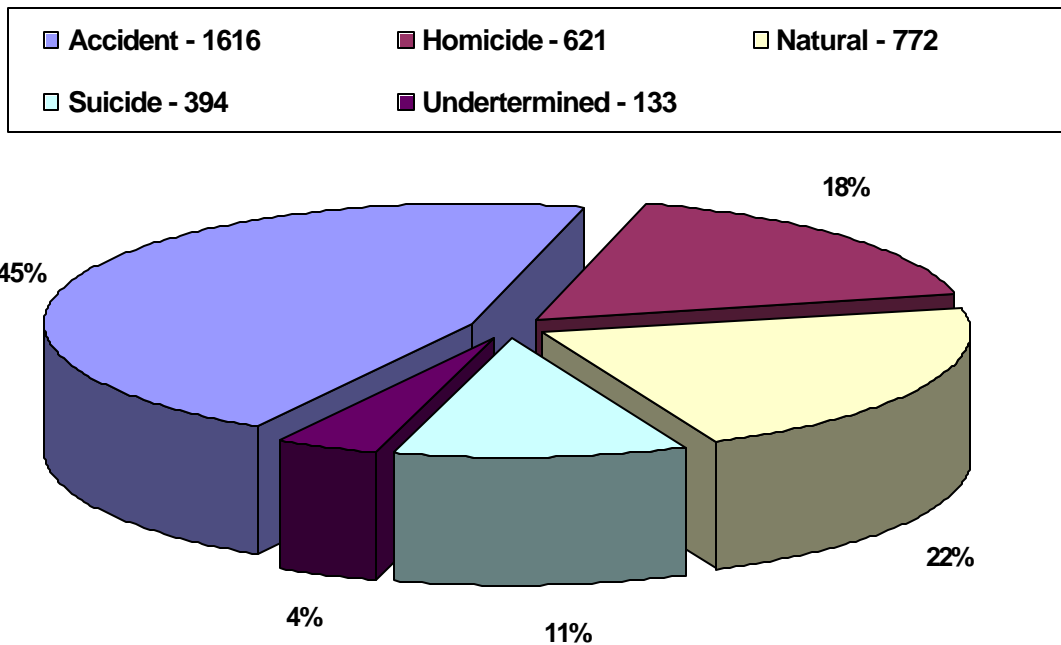


Index of Toxicology Statistics

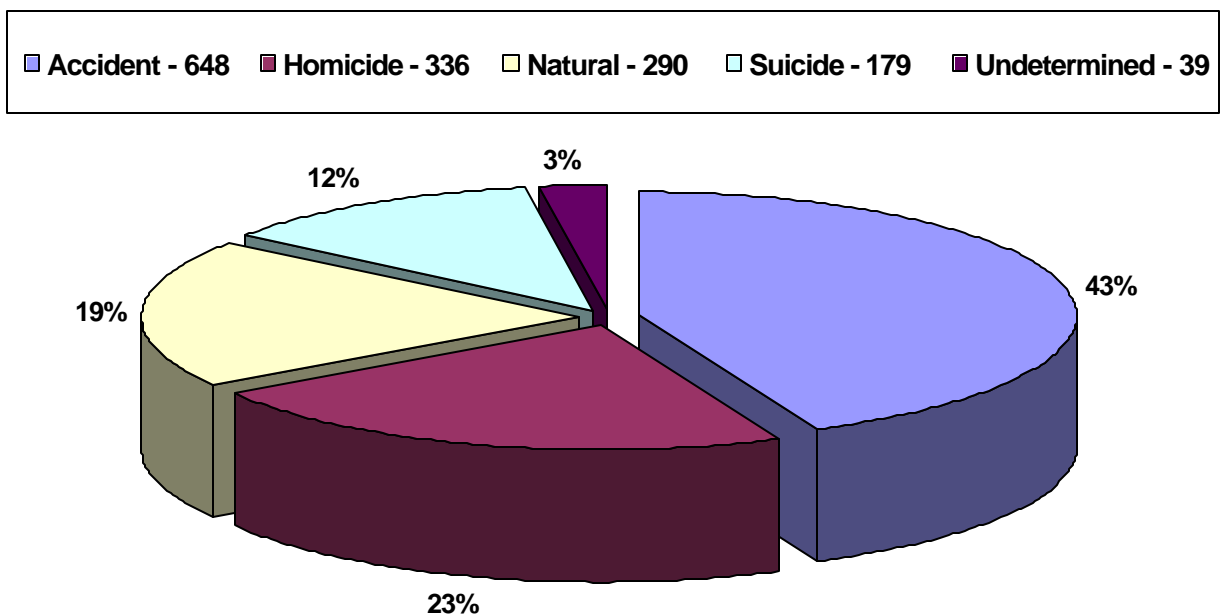
Topic	Page
Cases with Drugs Detected by Mode	
Alcohol Detected by Mode	41
Cocaine Detected by Mode	
Methamphetamine Detected by Mode	42
Heroin Detected by Mode	
Phencyclidine Detected by Mode	43
Club Drug by Mode	
Prescription Drug Categories	44



2003 Number of Cases with Drugs Detected by Mode Total Cases of 3,537



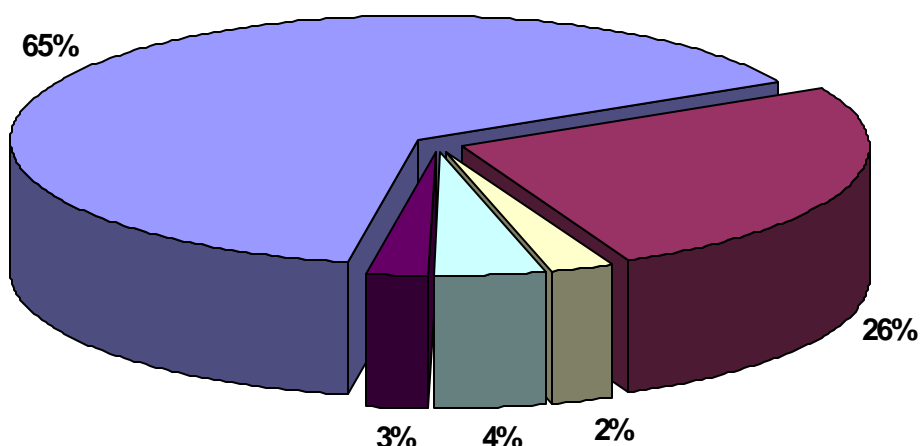
2003 Alcohol Detected by Mode Total Cases of 1,492





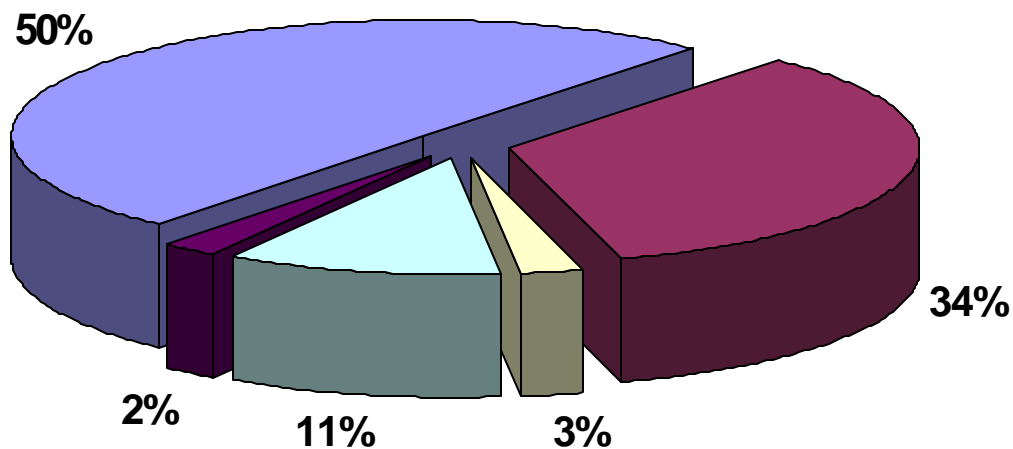
2003 Cocaine Detected by Mode Total Cases of 810

■ Accident - 521 ■ Homicide - 213 ■ Natural - 20 ■ Suicide - 35 ■ Undetermined - 21



2003 Methamphetamine Detected by Mode Total Cases of 474

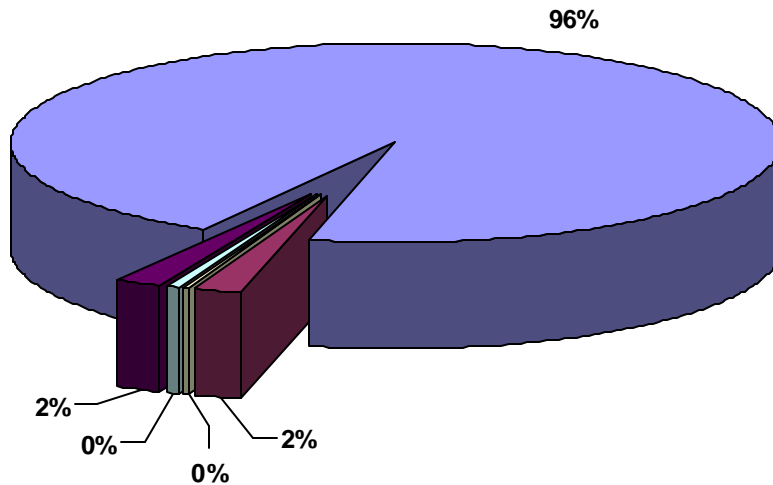
■ Accident - 238 ■ Homicide - 162 ■ Natural - 12 ■ Suicide - 52 ■ Undetermined - 10





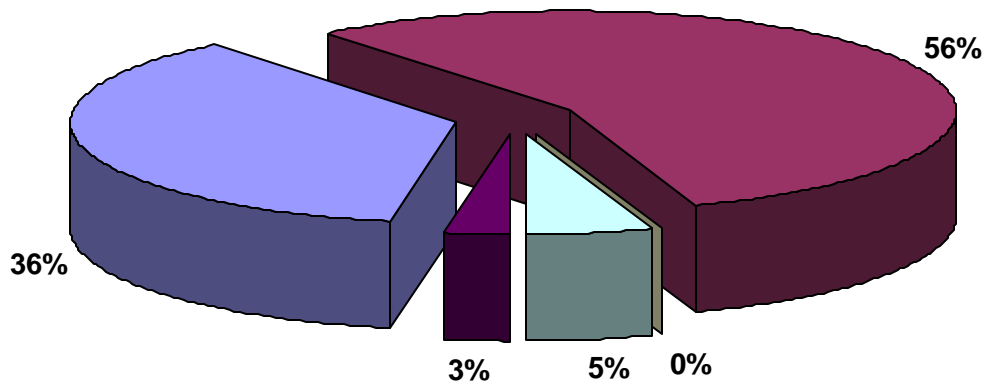
2003 Heroin Detected by Mode Total Cases of 211

■ Accident - 201 ■ Homicide - 4 ■ Natural - 1 ■ Suicide - 1 ■ Undetermined - 4



2003 Phencyclidine Detected by Mode Total Cases of 74

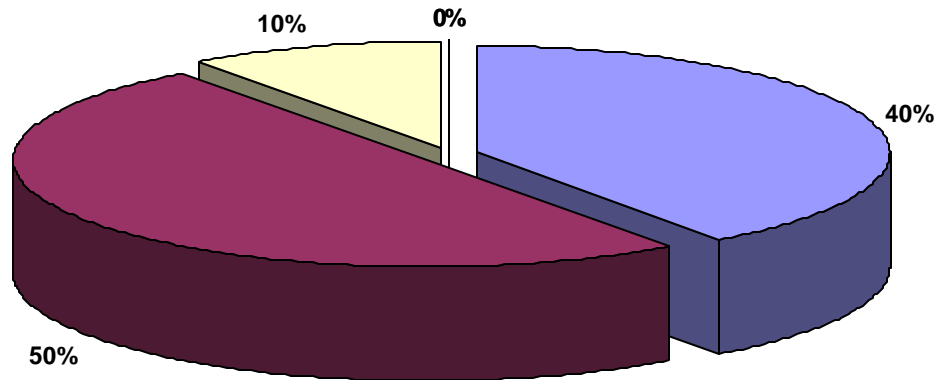
■ Accident - 27 ■ Homicide - 41 ■ Natural - 0 ■ Suicide - 4 ■ Undetermined - 2





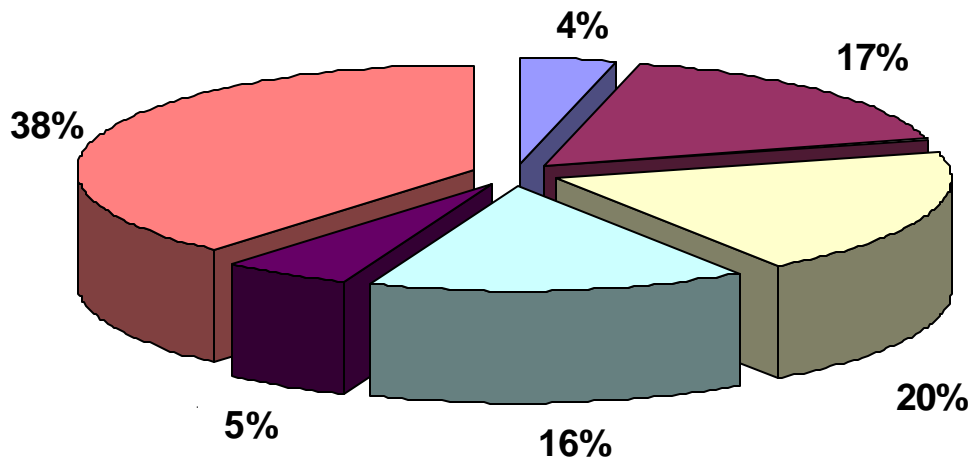
2003 Club Drug by Mode Total Cases of 10

■ Accident - 4 ■ Homicide - 5 ■ Natural - 1 ■ Suicide - 0 ■ Undetermined - 0



2003 Prescription Drug Categories Total Cases of 2586

■ Muscle Relaxants - 103 ■ Sedative Hypnotics - 436 ■ Antidepressants - 507
■ Antihistamines - 402 ■ Antipsychotics - 138 ■ Narcotic Analgesics - 1000





ACADEMIC ACTIVITIES

Publications

DT Anderson. "Case Notes: Detection of Gabapentin (Neurontin®) in Los Angeles County" Society of Forensic Toxicologists, *Tox-Talk*, March 2003.

DT Anderson. "New Drugs: Aripiprazole (Abilify®)" Society of Forensic Toxicologists, *Tox-Talk*, June 2003.

DT Anderson. "New Drugs: Desloratadine (Clarinet®)" Society of Forensic Toxicologists *Tox-Talk*, September 2003.

Presentations

DT Anderson. "Symbiotic Relationship between the Toxicologist and Numerology", Joint Meeting of the California Association of Toxicologists and Southwestern Association of Toxicologists, Albuquerque, NM, May 2003.

DT Anderson. "Atypical Antipsychotics-Medicines for the Mind", American Academy of Forensic Sciences, Chicago, IL February 2003.

MR Sandberg. "Does Going Over The Counter Put You Over Your Misery?" Joint Meeting of the California Association of Toxicologists and Southwestern Association of Toxicologists, Albuquerque, NM, May 2003.

MR Sandberg. Arcadia High School. Chemistry Club, Arcadia, CA, December 2003.

MR Sandberg. Santa Ana College Forensic Science Program, Santa Ana, CA, June 2003.

KL Fritz. SORT Skeletal Remains Recovery, San Diego, CA, June 2003.

JR Lintemoot. "Patches, Needles, and Lollipops" California Association of Toxicologists, Culver City, CA, November 2003.

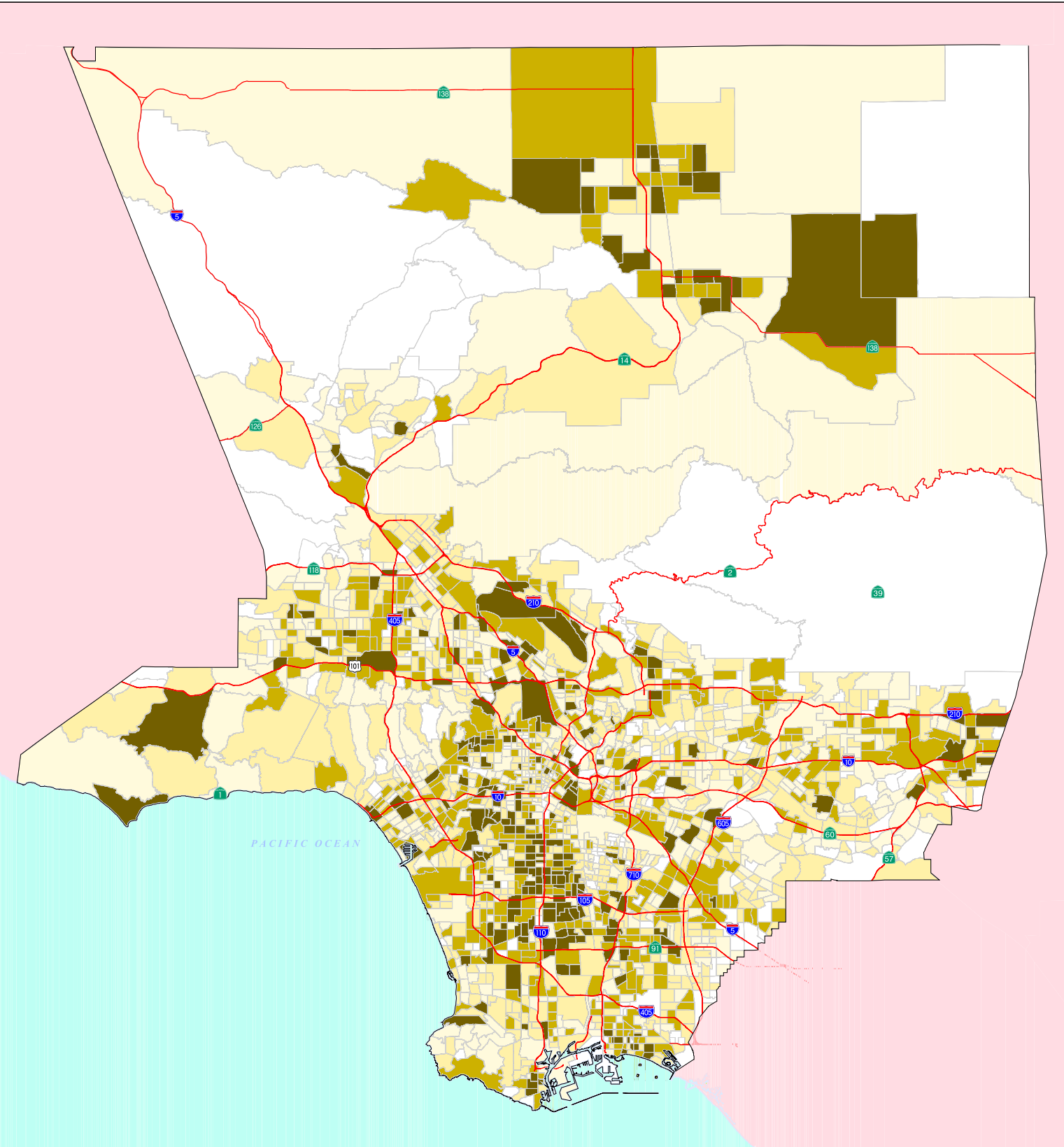



Los Angeles County



Geographic Statistics

Cases Accepted in 2003 by 2000 Census Tract (by Place of Residence)



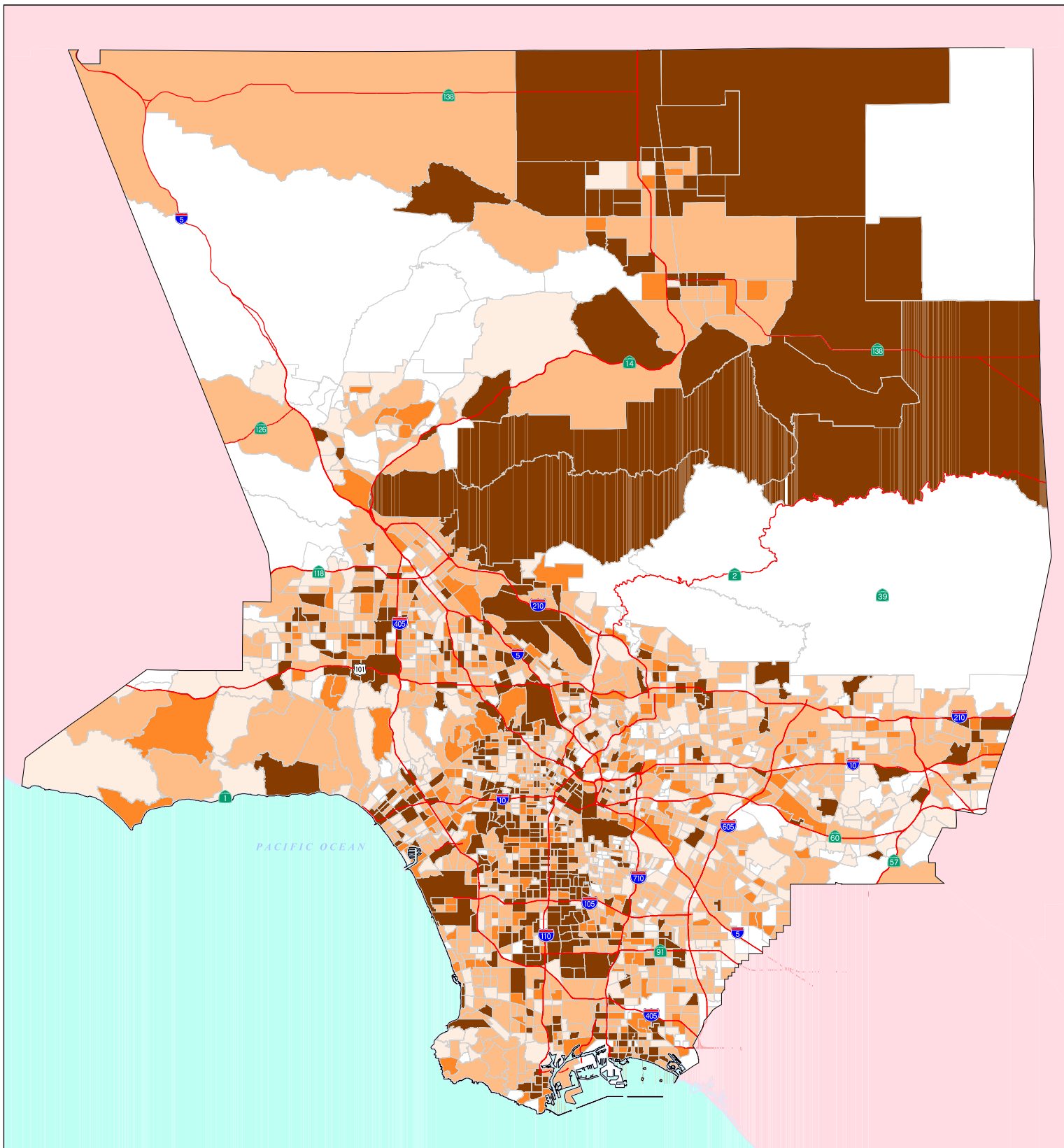
 Highways
 Number of Accepted Cases per 2000 Census Tract
 by Place of Residence
 No Cases
 1 - 2
 3 - 4
 5 - 7
 8 - 64
 Total Mapped = 8,233

Statistics	
8,233	Found and Mapped
152	Not Found
501	Non-LA County
734	Unknown/No Address
<hr/>	
9,620	Total



December 28, 2005
 Mark Greninger (213) 974-5735
 LACo CAO/SIB/Urban Research
 Census Tract Boundaries from
 LA Co Registrar/Recorder
 Roads from Thomas Brothers

Number of Coroner's Cases in 2003 per 1,000 population (2000 census) (by Place of Residence)



Highways
Rate of Death per 1,000 people (2000 census)
by Place of Residence

No Cases
0 - 0.5
0.5 - 1
1 - 1.25
> 1.5

County Average = 0.86

Statistics

8,233 Found and Mapped
152 Not Found
501 Non-LA County
734 Unknown/No Address

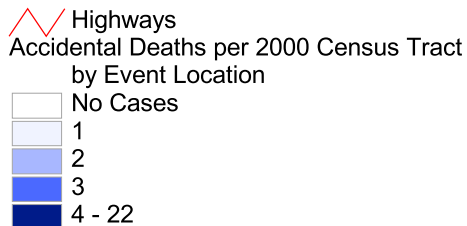
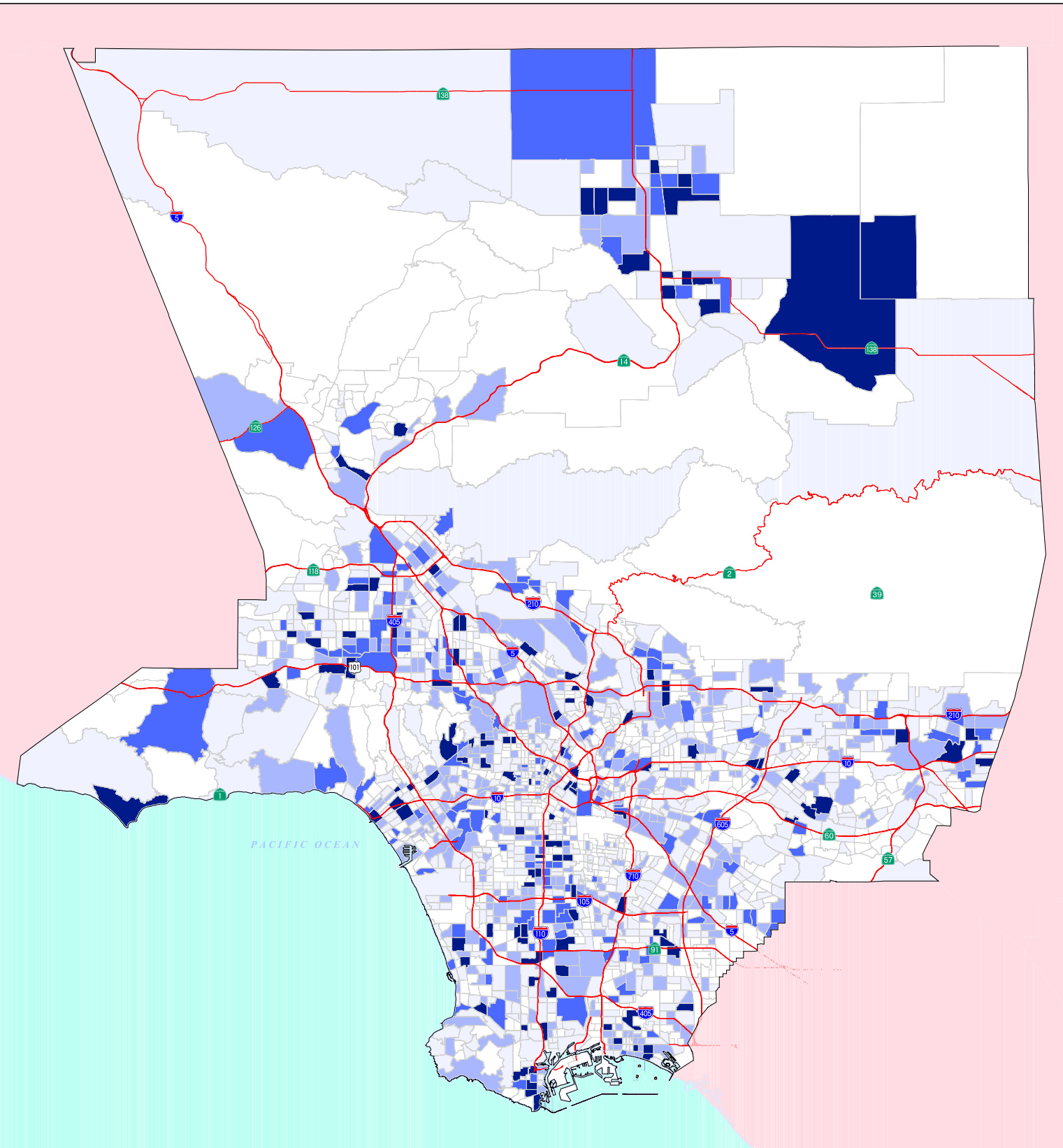
9,620 Total

10 0 10 Miles



December 28, 2005
Mark Greninger (213) 974-5735
LACo CAO/SIB/Urban Research
Census Tract Boundaries from
LA Co Registrar/Recorder
Roads from Thomas Brothers

Accidental Deaths in 2003 per 2000 Census Tract (by Place of Residence)



Statistics	
2,539	Found and Mapped
53	Not Found
201	Non-LA County
317	Unknown/No Address
<hr/>	
3,110	Total

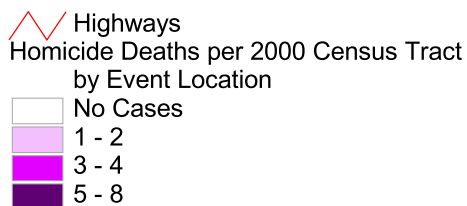
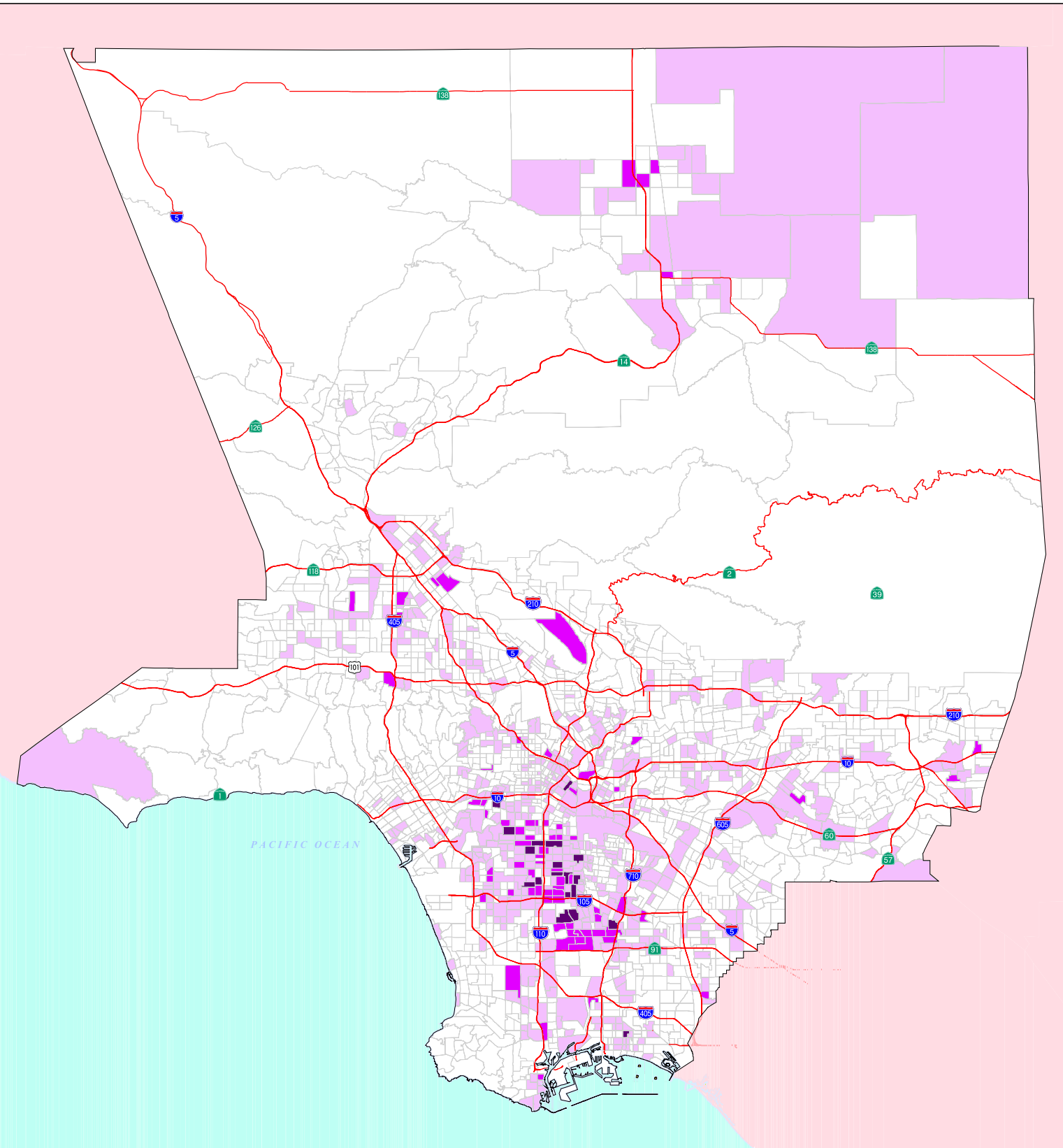


December 28, 2005
Mark Greninger (213) 974-5735
LACo CAO/SIB/Urban Research
Census Tract Boundaries from
LA Co Registrar/Recorder
Roads from Thomas Brothers

[illegible]

December 28, 2005
Mark Greninger (213) 974-5735
LACo CAO/SIB/Urban Research
Census Tract Boundaries from
LA Co Registrar/Recorder
Roads from Thomas Brothers

Homicide Deaths in 2003 per 2000 Census Tract (by Event Location)

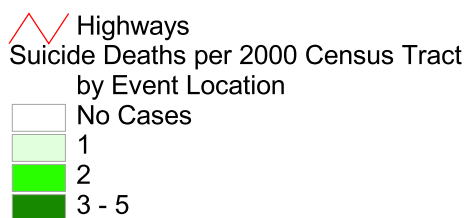
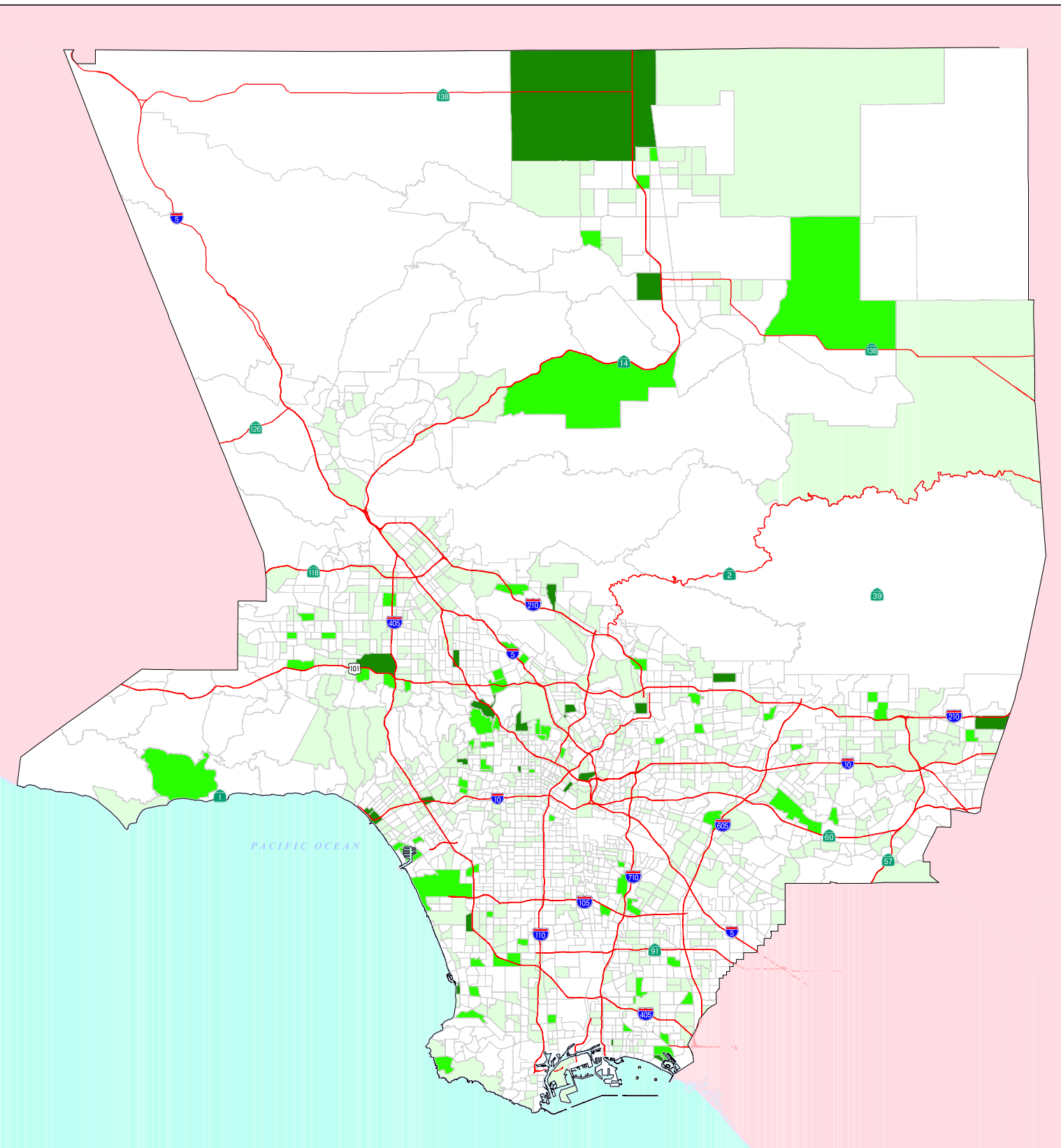


Statistics	
1,023	Found and Mapped
27	Not Found
14	Non-LA County
63	Unknown/No Address
<hr/>	
1,231	Total



December 28, 2005
 Mark Greninger (213) 974-5735
 LACo CAO/SIB/Urban Research
 Census Tract Boundaries from
 LA Co Registrar/Recorder
 Roads from Thomas Brothers

Suicide Deaths in 2003 per 2000 Census Tract (by Event Location)

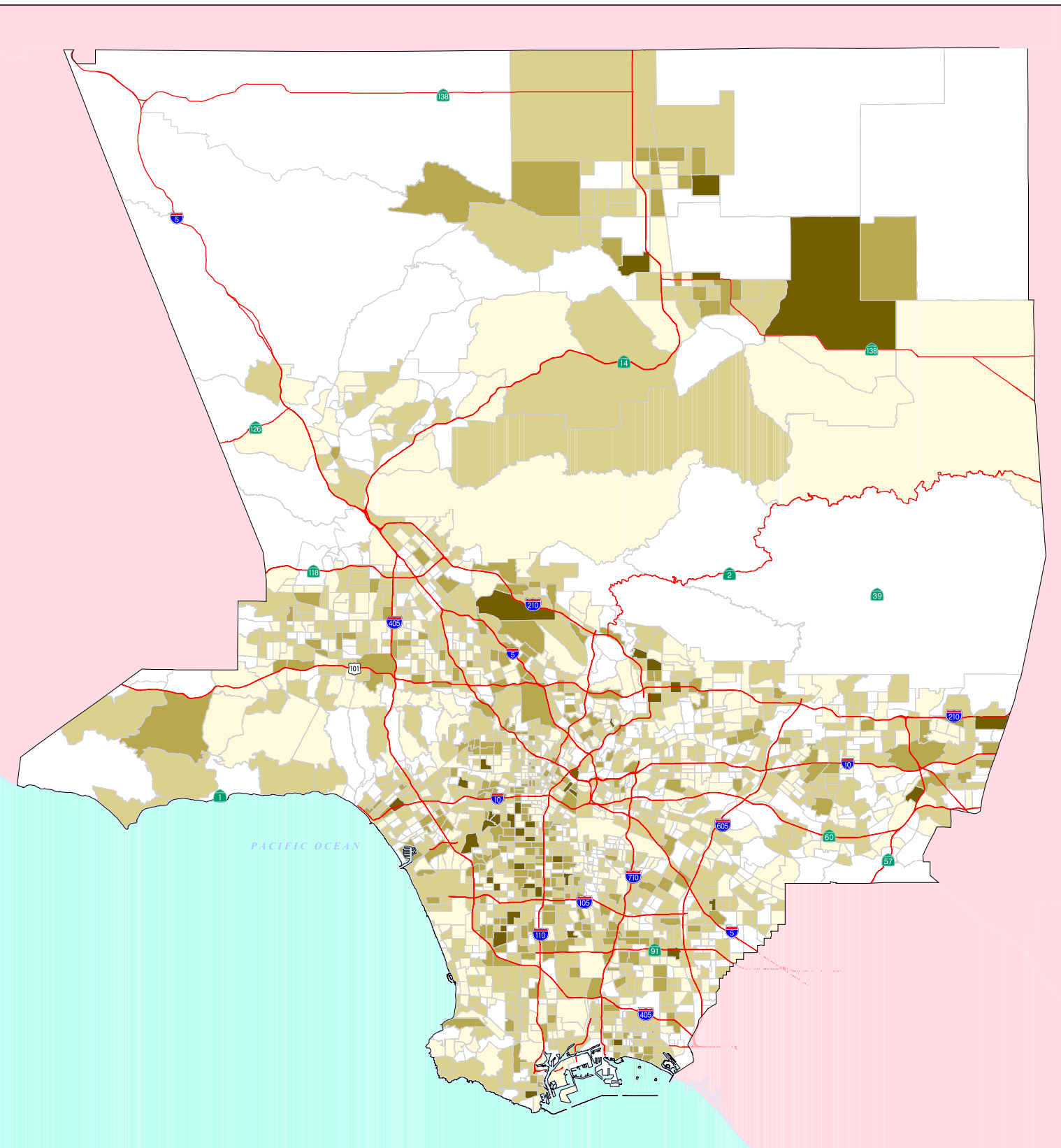


Statistics	
644	Found and Mapped
34	Not Found
14	Non-LA County
40	Unknown/No Address
<hr/>	
732	Total

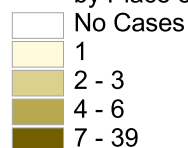


December 28, 2005
Mark Greninger (213) 974-5735
LACo CAO/SIB/Urban Research
Census Tract Boundaries from
LA Co Registrar/Recorder
Roads from Thomas Brothers

Natural Deaths in 2003 per 2000 Census Tract (by Place of Residence)



Highways
Natural Deaths per 2000 Census Tract
by Place of Residence



Statistics

3,861	Found and Mapped
66	Not Found
211	Non-LA County
206	Unknown/No Address

4,344	Total

10 0 10 Miles



December 28, 2005
Mark Greninger (213) 974-5735
LACo CAO/SIB/Urban Research
Census Tract Boundaries from
LA Co Registrar/Recorder
Roads from Thomas Brothers

County of Los Angeles

Strategic Plan



"Enriching Lives"

County Vision

Our **purpose** is to improve the quality of life in Los Angeles County by providing responsive, efficient and high quality public services that promote the self-efficiency, well-being and prosperity of individuals, families, businesses and communities.

Our **philosophy** of teamwork and collaboration is anchored in our **shared values**:

- **A can-do attitude** - we approach each challenge believing that, together, a solution can be achieved.
- **Accountability** - we accept responsibility for the decisions we make and the actions we take.
- **Compassion** - we treat those we serve and each other in a kind and caring manner.
- **Commitment** - we always go the extra mile to achieve our mission.
- **Integrity** - we act consistent with our values.
- **Professionalism** - we perform to a high standard of excellence.
- **Respect for diversity** - we value the uniqueness of every individual and their perspective.
- **Responsiveness** - we take the action needed in a timely manner.

Our **position** as the premier organization for those working in the public interest is established by:

- A capability to undertake programs that have public value;
- An aspiration to be recognized through our achievements as the model for civic innovation; and a pledge to always work to earn the public trust.

County Mission

To enrich lives through effective and caring service

Strategic Plan Goals

- | | |
|---------------------------------|--------------------------------------|
| 1. Service Excellence | 5. Children and Families Well- Being |
| 2. Workforce Excellence | 6. Community Services |
| 3. Organizational Effectiveness | 7. Health and Mental Health |
| 4. Fiscal Responsibility | 8. Public Safety |