

# Marina del Rey Infrastructure Improvement Program Update

DCB Meeting 9.17.14



**Presentation By:**  
**Pamela Manning & Brittany Barker**



# Completed Projects to Date



## MARINA DEL REY INFRASTRUCTURE PROJECTS



## COMPLETED PROJECTS

(As of September, 2014)

- 1 - ODOOR CONTROL PROJECT**  
Construction Completion Date: December 2011  
Scope of Work: To control odors from a sewer force main outlet manhole at Admiralty Way. Work will include the installation of a scrubber unit and cabinet, 80 feet of high density polyethylene pipe, electrical work, and landscaping.
- 2 - 18-INCH WATERLINE REPLACEMENT PHASE II PROJECT**  
Construction Completion Date: November 2012  
Scope of Work: Improve the Marina del Rey Water System to meet domestic and fire protection demands. Install approximately 3,500 linear feet of new 18-inch diameter steel pipeline along Admiralty Way and portions of Via Marina and Fiji Way to replace the existing, aged, and undersized 14-inch diameter water main.
- 3 - ADMIRALTY WAY SETTLEMENT REPAIR PROJECT**  
Construction Completion Date: May 2013  
Scope of Work: Repair the settled roadway to prevent further settlement; remove existing grade and cement treat soil; reconstruct sidewalks, curbs, gutters, driveways and medians; restore existing street lights, traffic loops, roadway striping and update signage.
- 4 - 18-INCH WATER LINE REPLACEMENT PHASE II-A PROJECT**  
Construction Completion Date: June 2013  
Scope of Work: Improve the Marina del Rey Water System to meet domestic and fire protection water demands. Phase II-A consists of the installation of approximately 1,000 linear feet of 18-inch diameter steel pipeline along Via Marina from Penay Way to Marquesas Way to replace the existing, aged, and undersized 12-inch diameter water mains.
- 5 - MANHOLE LINING PROJECT - PHASE II**  
Construction Completion Date: August 2013  
Scope of Work: To reduce the potential of groundwater infiltration into sewer manholes. Infiltration of groundwater reduces the capacity of the pipes which are already impacted by growth and development of the area. Work consists of the installation of a seamless plastic coating inside 75 sewer manholes.
- 6 - ADMIRALTY WAY STREET IMPROVEMENT PROJECT**  
Construction Completion Date: April 2014  
Scope of Work: To provide sufficient capacity to accommodate future traffic conditions to comply with the Marina del Rey Local Coastal Program. The project will also include resurfacing the existing pavement. Improvements will include traffic turn pocket modifications, new pavement, traffic signal upgrades, signing and striping, street light relocation, median reconfiguration and median landscape replacement.
- 7 - BURTON CHASE PARK TRANSIENT DOCK REPLACEMENT PROJECT**  
Construction Completion Date: May 2014  
Scope of Work: Removal of the existing dock system and replacement with a new dock system consisting of 44 new reconfigured transient boat slips, including long side slips, a 4-hour transient barfaring, and repair and upgrade of the landside utilities (water, fire protection, power, and sewer) for the new dock system.
- 8 - TIDE GATE PROJECT**  
Construction Completion Date: June 2014  
Scope of Work: The project includes rehabilitating and upgrading the existing tide gate facility, including replacing the manually operated tide gates with new automated gates, repairing the damaged concrete wing walls and installing the integrated metal discharge gates.
- 9 - PARKING LOTS 5 AND 7 PARKWAY IMPROVEMENT PROJECT**  
Construction Completion Date: August 2014  
Scope of Work: To improve water quality in the Marina; remove pollutants to address Total Maximum Daily Load (TMDL) concerns; install bio-retention devices within parkways just outside of Lot 7 and bio-filtration devices within existing planter boxes in Lot 5 to treat stormwater runoff from parking lots; reduce quantity of stormwater runoff while implementing Low-Impact Development (LID) strategies.



# Projects Under Construction



## MARINA DEL REY INFRASTRUCTURE PROGRAM



## PROJECTS UNDER CONSTRUCTION

(As of September, 2014)

### 1 - SEAWALL REFURBISHMENT PROJECT

Construction Start Date: May 2013

Scope of Work: To ensure the prolonged integrity of the Marina by performing crucial maintenance, inspection, and as-needed repair services on the seawall (approx. 7.3 miles in length) at 100 various locations.

### 2 - 18-INCH WATER LINE REPLACEMENT PHASE III-B PROJECT

Construction Start Date: September 2014

Scope of Work: Improve the Marina del Rey Water System to meet domestic and fire protection water demands. Phase III-B consists of the installation of approximately 6,000 linear feet of 18-inch diameter steel pipeline along Via Marina and Fiji Way to replace the existing, aged, and undersized 10-inch and 14-inch diameter water mains.



# Seawall Refurbishment Project

Status: Under Construction

Anticipated Completion Date:  
January 2015

Project Scope:

- To ensure the prolonged integrity of the Marina by performing crucial maintenance and repairs on the 7.3 miles of seawall at various locations



# 18-inch Waterline Replacement Phase III-B Project

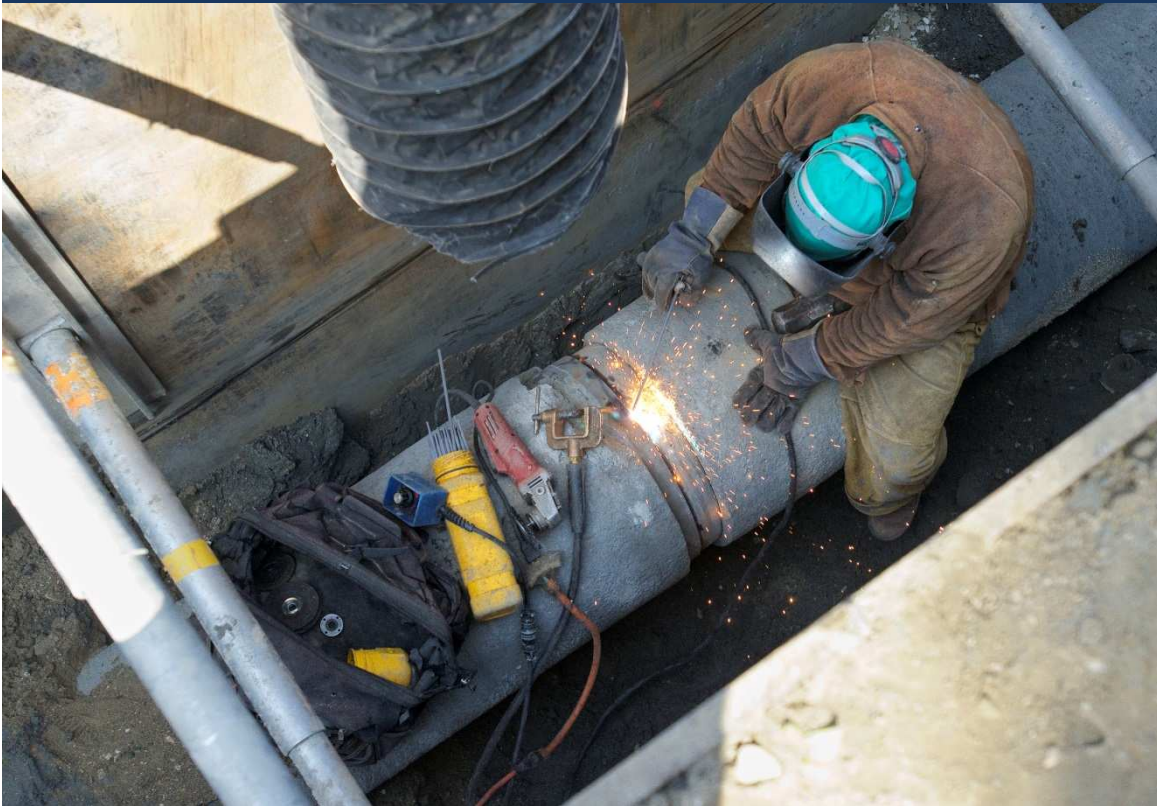


## Project Scope:

- Improve the Marina del Rey Water System to meet domestic and fire protection demands
- Install approximately 6,000 LF of new 18" diameter steel pipe along Via Marina and Fiji Way to replace the existing, aged, and undersized 10" & 14" diameter water mains

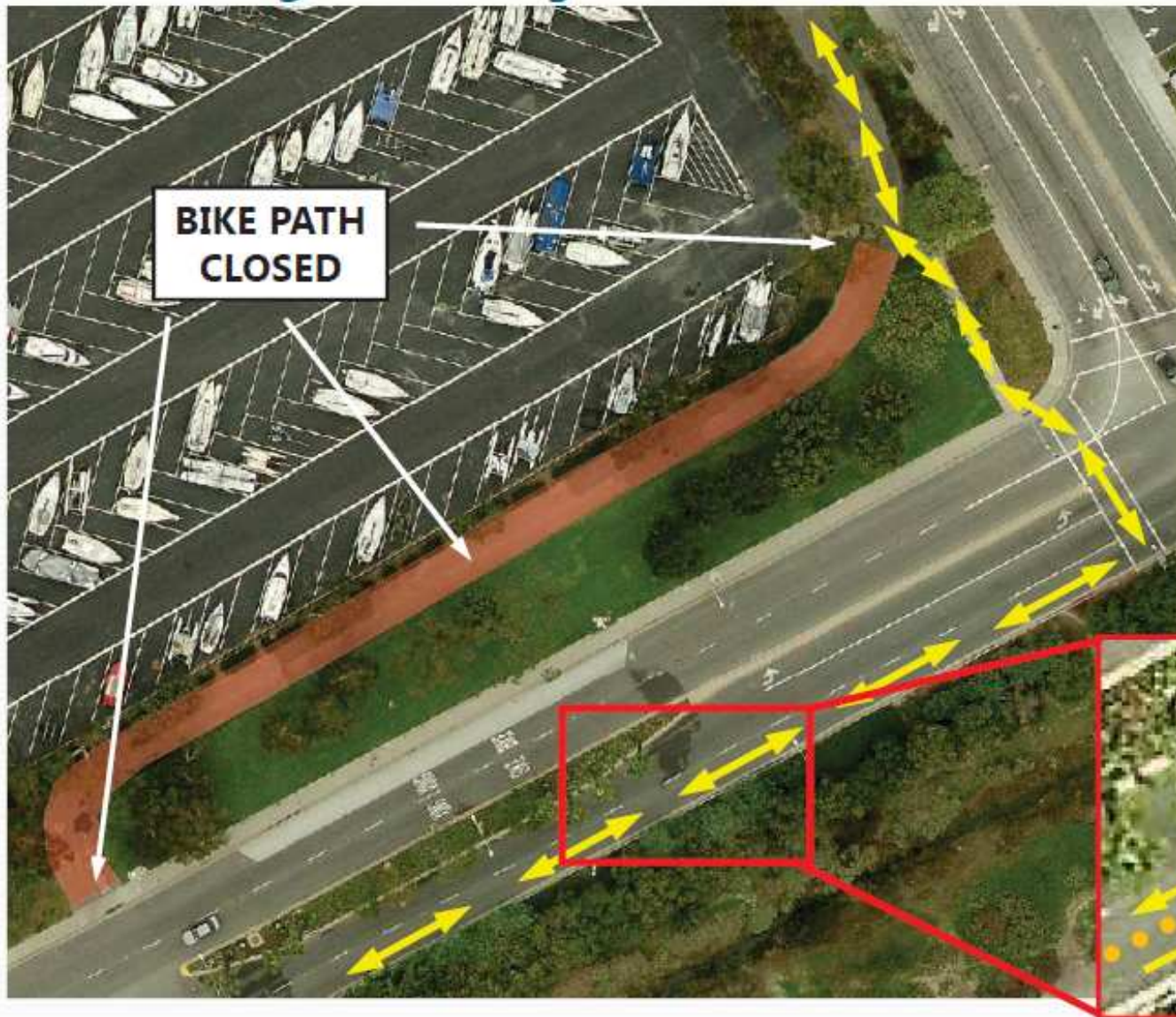


# 18-inch Waterline Replacement Phase III-B Project





# 18-inch Waterline Replacement Phase III-B Project BIKE PATH DETOUR



- Bike lane located northwest along Fiji Way will be closed throughout construction
- Signage will indicate closure and detour
- Cyclists will be directed to temporary lanes on southeast side of Fiji Way
- Detour will end at the Marvin Braude Bike Path at the terminus of Fiji Way





# Future Projects



## MARINA DEL REY INFRASTRUCTURE PROGRAM



## FUTURE PROJECTS

(As of September, 2014)

### 1 - OXFORD RETENTION BASIN MULTI-USE ENHANCEMENT PROJECT

Estimated Construction Start Date: October 2014

Scope of Work: Enhance flood protection, reduce runoff pollution, and significantly improve the quality of plant and wildlife habitat within the facility, as well as its aesthetic appeal. Diseased trees and non-native plants will be replaced with more native, drought-tolerant species. The project will also provide new recreational and safety amenities, including a walking path, observation areas, wildlife-friendly lighting, and more attractive tubular fencing.

### 2 - ANCHORAGE 47 DOCK REPLACEMENT PROJECT

Estimated Construction Start Date: November 2014

Scope of work: Removal of the existing dock system and replacement with a new dock system consisting of 11 newly reconfigured docks with 253 new slips and repair and upgrade of the landside utilities (water, fire protection, power, and sewer) for the new reconfigured dock system.

### 3 - BOATHOUSE PROJECT

Estimated Construction Start Date: Winter 2014

Scope of Work: Remodel boathouse facilities to meet ADA compliance. The improvements include the installation of new ADA compliant drinking fountains, elevator with new machine room and utilities, remodel and expansion of existing toilet & shower facilities, installation of a new electrical system to support renovated areas, and seismic upgrade to existing structure above and below the water line. Improvements also include modifications to adjacent parking lot and landscaping of frontage.

### 4 - FIJI WAY ROADWAY IMPROVEMENT PROJECT

Estimated Construction Start Date: Spring 2015

Scope of work: Roadway resurfacing, curb, gutter, sidewalk repair, and new landscaping in medians. Roadway resurfacing and median improvements will be from Lincoln Blvd to the end of Fiji Way. Existing Class II bicycle lanes within the project limits will be restored.

### 5 - VIA MARINA SOUTH OF OLD HARBOR LANE - GUARDRAIL

Estimated Construction Start Date: Spring 2016

Scope of work: Removal of the existing raised median on the curved area at the South end of the Marina, replace with a guardrail and relocate two existing street lights.

### 6 - VIA MARINA STREET IMPROVEMENT PROJECT

Estimated Construction Start Date: Spring 2017

Scope of work: Roadway resurfacing, curb, gutter, sidewalk repair, and new landscaping in medians. Roadway resurfacing and median improvements will be from Panay Way to the end of City Limit.

### 7 - ADMIRALTY WAY @ VIA MARINA ROADWAY PROJECT

Estimated Construction Start Date: Spring 2017

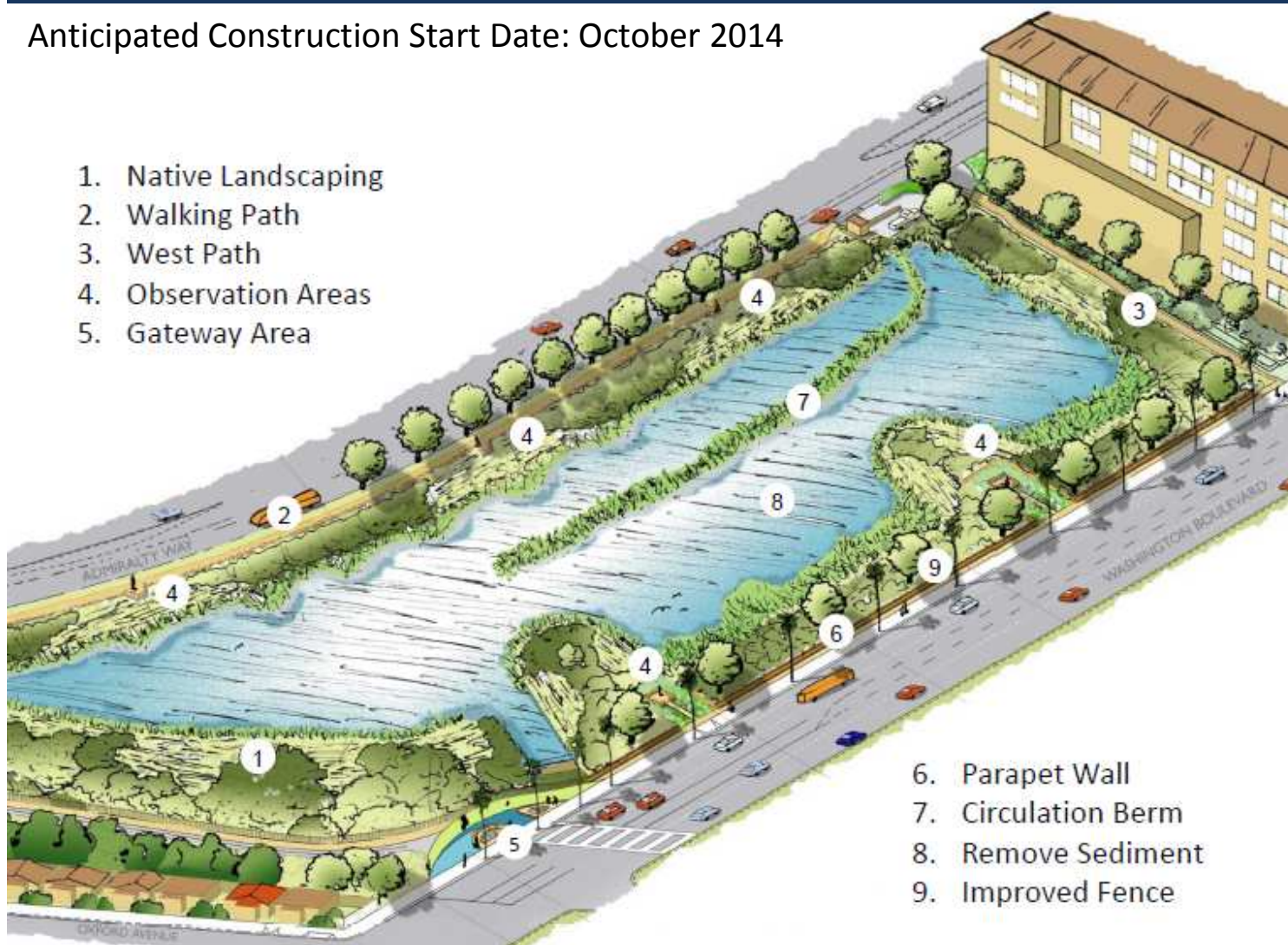
Scope of Work: To improve traffic flow and reduce traffic delay at the intersection of Via Marina and Admiralty Way. Reconfigure the existing "T" intersection to create additional left-turn pockets. Work will include reconstruction of medians, sidewalks, curbs, gutters; relocation of catch basins, street lights, and two bus pads; traffic signal upgrade, and striping.

NOTE: The above Construction Start dates are approximate and subject to change at any time without notice.



# Oxford Retention Basin Multi-Use Enhancement Project

Anticipated Construction Start Date: October 2014



## Project Scope:

- Improve flood control function, water quality, habitat, aesthetics, and recreation opportunities
- Includes re-grading, a berm for increased circulation, replacement of non-native vegetation with native species, a decomposed granite walking path around the basin, and less obstructive fencing



# Oxford Retention Basin Multi-Use Enhancement Project





# Anchorage 47 Dock Replacement Project

Anticipated Construction  
Start Date: November 2014

## Project Scope:

- Removal of the existing dock system and replacement with a new dock system
- Consists of 11 newly reconfigured docks with 253 new slips
- Repair & upgrade of the landside utilities (water, fire protection, power, and sewer) for the new dock system





# Anchorage 47 Dock Replacement Project





# Boathouse Project



Anticipated Construction Start Date:  
Winter 2014/2015

## Project Scope:

- Remodel boathouse facilities to meet ADA compliance.
- Installation of new ADA compliant drinking fountains, elevator, renovate existing toilet and shower facilities, installation of a new electrical system.
- Modifying the adjacent parking lot and installing frontage landscaping.





# Future Projects



## MARINA DEL REY INFRASTRUCTURE PROGRAM



## FUTURE PROJECTS

(As of September, 2014)

### 1 - OXFORD RETENTION BASIN MULTI-USE ENHANCEMENT PROJECT

Estimated Construction Start Date: October 2014

Scope of Work: Enhance flood protection, reduce runoff pollution, and significantly improve the quality of plant and wildlife habitat within the facility, as well as its aesthetic appeal. Diseased trees and non-native plants will be replaced with more native, drought-tolerant species. The project will also provide new recreational and safety amenities, including a walking path, observation areas, wildlife-friendly lighting, and more attractive tubular fencing.

### 2 - ANCHORAGE 47 DOCK REPLACEMENT PROJECT

Estimated Construction Start Date: November 2014

Scope of work: Removal of the existing dock system and replacement with a new dock system consisting of 11 newly reconfigured docks with 253 new slips and repair and upgrade of the landside utilities (water, fire protection, power, and sewer) for the new reconfigured dock system.

### 3 - BOATHOUSE PROJECT

Estimated Construction Start Date: Winter 2014

Scope of Work: Remodel boathouse facilities to meet ADA compliance. The improvements include the installation of new ADA compliant drinking fountains, elevator with new machine room and utilities, remodel and expansion of existing toilet & shower facilities, installation of a new electrical system to support renovated areas, and seismic upgrade to existing structure above and below the water line. Improvements also include modifications to adjacent parking lot and landscaping of frontage.

### 4 - FIJI WAY ROADWAY IMPROVEMENT PROJECT

Estimated Construction Start Date: Spring 2016

Scope of work: Roadway resurfacing, curb, gutter, sidewalk repair, and new landscaping in medians. Roadway resurfacing and median improvements will be from Lincoln Blvd to the end of Fiji Way. Existing Class II bicycle lanes within the project limits will be restored.

### 5 - VIA MARINA SOUTH OF OLD HARBOR LANE - GUARDRAIL

Estimated Construction Start Date: Spring 2016

Scope of work: Removal of the existing raised median on the curved area at the South end of the Marina, replace with a guardrail and relocate two existing street lights.

### 6 - VIA MARINA STREET IMPROVEMENT PROJECT

Estimated Construction Start Date: Spring 2017

Scope of work: Roadway resurfacing, curb, gutter, sidewalk repair, and new landscaping in medians. Roadway resurfacing and median improvements will be from Panay Way to the end of City Limit.

### 7 - ADMIRALTY WAY @ VIA MARINA ROADWAY PROJECT

Estimated Construction Start Date: Spring 2017

Scope of Work: To improve traffic flow and reduce traffic delay at the intersection of Via Marina and Admiralty Way. Reconfigure the existing "T" intersection to create additional left-turn pockets. Work will include reconstruction of medians, sidewalks, curbs, gutters; relocation of catch basins, street lights, and two bus pads; traffic signal upgrade, and striping.

NOTE: The above Construction Start dates are approximate and subject to change at any time without notice.



# Coordinated Design Elements

Admiralty Way Settlement Repair Project



Admiralty Way Street Improvement Project



Proposed Via Marina Street Improvement Project



Proposed Fiji Way Roadway Improvement Project





# Admiralty Way at Via Marina Roadway Project





Pamela Manning  
Program Coordinator  
[pmanning@dpw.lacounty.gov](mailto:pmanning@dpw.lacounty.gov)  
(626) 458-7131

Marina del Rey Website:  
[dpw.lacounty.gov/go/mdr](http://dpw.lacounty.gov/go/mdr)

Brittany Barker  
Program Manager  
[bbarker@dpw.lacounty.gov](mailto:bbarker@dpw.lacounty.gov)  
(626) 458-4971



Thank you!