



County of Los Angeles Beach Commission

13837 Fiji Way, Marina del Rey, CA 90292
Phone: (310) 305-9546 Fax: (310) 822-0119
Web Page: <http://beaches.lacounty.gov>



AGENDA

Meeting of the Beach Commission
April 23, 2014
9:30 a.m.
Burton Chace Park
13650 Mindanao Way
Marina del Rey, CA 90292

1. CALL TO ORDER AND PLEDGE OF ALLEGIANCE

2. APPROVAL OF MINUTES

(March 26, 2014)

3. OLD BUSINESS

None

4. NEW BUSINESS

A. Briefing on Los Angeles Regional Water Quality Control Board (DISCUSSION)
decision on copper levels in Marina del Rey

B. DBH beach jurisdiction, operations and revenues (DISCUSSION)

*Ginny Kruger,
Chair
Wayne Powell,
Vice-Chair*

*Thomas Barnes
Clare Bronowski
Rosi Dagit
Walt Dougher
Norman Dupont*

*Jeffrey Jennings
Catherine McCurdy
Kelly McDowell
Charles Milam
Maureen O'Donnell*

*Scott Sachs
Jeffrey Sallee
Peter Tucker
Mitch Ward
Gregory Woodell*

5. STAFF REPORTS

- A. Ongoing Activities Report (REPORT)
 - Board Actions on Items Relating to Beaches
- B. Beach and Marina del Rey Special Events (REPORT)
- C. Facilities and Property Maintenance Division Report (REPORT)
Regarding Beach Maintenance
- D. Capital Projects Status Report/Related Activities (REPORT)
- E. Lifeguard Report (VERBAL REPORT)

6. COMMISSIONER COMMENTS

7. COMMUNICATION FROM THE PUBLIC

8. **NEXT MEETING DATE & LOCATION** – Wednesday, May 28, 2014, at 9:30 a.m. at Burton Chace Park Community Room.

9. ADJOURNMENT

PLEASE NOTE:

1. The Los Angeles County Board of Supervisors adopted Chapter 2.160 of the Los Angeles Code (Ord. 93-0031 § 2 (part), 1993), relating to lobbyists. Any person who seeks support or endorsement from the Beach Commission on any official actions must certify that he/she is familiar with the requirements of this ordinance. A copy of the ordinance can be provided prior to the meeting and certification is to be made before or at the meeting.
2. The agenda will be posted on the Internet and displayed at the following locations at least 72 hours preceding the meeting date:

Department of Beaches and Harbors' Website Address: marinadelrey.lacounty.gov

Department of Beaches and Harbors
Administration Building
13837 Fiji Way
Marina del Rey, CA 90292

Marina del Rey Information Center
4701 Admiralty Way
Marina del Rey, CA 90292

Burton Chace Park Community Room
13650 Mindanao Way
Marina del Rey, CA 90292

Lloyd Taber – Marina del Rey Library
4533 Admiralty Way
Marina del Rey, CA 90292

Si necesita asistencia para interpretar esta informacion llame al (310) 305-9546.

ADA ACCOMMODATIONS: If you require reasonable accommodations or auxiliary aids and services such as material in alternate format or a sign language interpreter, please contact the ADA (Americans with Disability Act) Coordinator at (310) 305-9590 (Voice) or (310) 821-1737 (TDD), with at least three business days notice.



(310) 305-9503 ♦ 13837 Fiji Way, Marina del Rey, CA, 90292 ♦ beaches.lacounty.gov

Caring for Your Coast

♦ ♦ ♦
Gary Jones
Acting Director

Kerry Silverstrom
Chief Deputy

John Kelly
Deputy Director

April 17, 2014

TO: Beach Commission

FROM: *Carol B...*
Gary Jones, Acting Director

SUBJECT: **BEACH COMMISSION AGENDA – APRIL 23, 2014**

Enclosed is the agenda for your meeting of April 23, 2014, together with the minutes of your March 26, 2014 meeting. Also enclosed are reports related to Agenda Items 4A, 4B, 5A, 5B, 5C and 5D as well as the Beach Commission Attendance Report.

Please call me if you have any questions or need additional information.

GJ:CB:ms

Enclosures



COUNTY OF LOS ANGELES BEACH COMMISSION
MINUTES OF MARCH 26, 2014

COMMISSIONERS PRESENT

Ginny Kruger, Chair
Wayne Powell, Vice-Chair
Rosie Dagit
Walt Dougher
Norman Dupont
Catherine McCurdy
Charles Milam
Maureen O'Donnell
Scott Sachs
Jeffrey Sallee
Peter Tucker
Mitch Ward
Gregory Woodell

ABSENCES

Thomas Barnes
Clare Bronowski
Jeffrey Jennings
Kelly McDowell

STAFF PRESENT

John Kelly, Deputy Director, Facilities/Capital Projects/
Maintenance/Traffic Planning/Harbor Engineering Bureau
Carol Baker, Division Chief, Community & Marketing
Services Division
Steve Moseley, Assistant Chief, Lifeguard Division, Los Angeles
County Fire Department
Kenneth Foreman, Division Chief, Facilities and
Property Maintenance Division
Stefan Popescu, Grants & Contracts Unit, Administrative
Services Division
Elayne Doucette, Section Head Revenue & Systems Development
Section, Administrative Services Division

GUEST SPEAKER

Ed Almanza, EIR Consultant, City of Hermosa Beach slant oil drilling project

MEETING LOCATION

Burton W. Chace Park Community Room

1. CALL TO ORDER AND PLEDGE OF ALLEGIANCE

Chair Kruger called the meeting to order at 9:35 a.m. Chair Kruger asked Commissioner Tucker to lead the Pledge of Allegiance. The Commissioners and staff stood and recited the Pledge of Allegiance.

2. APPROVAL OF MINUTES

Commissioner Dupont asked that the minutes be modify for clarification under the Ongoing Activities Report. Modification to section 5a, to state "Mr. Kelly spoke on the Broad Beach issues and how this Commission was involved in preventing an attempt to take sand for private use." Chair Kruger asked for a motion to approve the minutes with modifications. **Motion carried and unanimously approved.**

Ayes: 13 – Chair Kruger, Vice-Chair Powell, Dagit, Dougher, Dupont, McCurdy, Milam, O'Donnell, Sachs, Sallee, Tucker, Ward, Woodell.

Chair Kruger suggested new business Item 4a. be discussed first since there were a number of guests at the meeting. There were no objections.

3. OLD BUSINESS

A. Update on South Coast Air Quality Management District fire ring action

Ms. Baker stated that, at the request of the Commission, staff will provide an update on the South Coast Air Quality Management District fire ring policy. The Air Quality Management District (AQMD) board adopted the policy, which took effective March 1, 2014. This had no effect on the spacing of the fire rings at Dockweiler. She stated there are two provisions in the policy that would impact the Department: They are "no burn days" and educating the public about clean fuel. Ms. Baker explained that while the AQMD has been moving forward on the policy, a state legislator from Orange County has introduced legislation about the fire rings. Ms. Baker asked Stefan Popescu from the Department's Administrative Services Division to discuss the legislation that was introduced. Mr. Popescu stated that Assembly Member Travis Adam introduced AB1102. If passed, the law would require that jurisdictions with fire rings obtain a Coast Development Permit (CDP) to move any rings. He reported that the staff is currently working with County Counsel to amend the bill and address operational issues. Commissioners thanked the staff for providing an update.

4. NEW BUSINESS

A. Presentation by the City of Hermosa Beach on proposed slant oil drilling project and its potential beach impact

Commissioner Tucker provided a brief timeline of the proposed project and introduced Ed Almanza, an Environmental Impact Report (EIR) consultant for the City of Hermosa Beach. He was hired as a project manager to oversee the production of the EIR, prepared by consultants of Marine Research Specialist (MRS). He specializes in EIR's and oil and gas. Mr. Almanza explained that the project will be placed on the ballot for the November election. The decision is for Hermosa Beach residents to make and not the City Council. He further explained that the vote is for removing the existing ban on oil drilling citywide; and whether or not to approve a development agreement with the applicant, E&B Oil. Mr. Almanza provided a PowerPoint presentation showing the areas of the proposed development and discussed the project. The following members of the public spoke and voiced their concerns with the proposed project: Sarah Sikich, Science and Policy Director of Heal the Bay; Greg Cadwallader,

South Bay Chapter Surfrider Foundation; Kevin Sousa, of the grass-roots, Stop Hermosa Beach Oil; and Brian Meux, from Los Angeles Waterkeeper. The item was not agendaized for action and Commissioners felt there was not enough time or information to make a recommendation in the future. Staff indicated they would inform Commissioners by email whether County agencies had or would be responding to the EIR. Commissioner McCurdy stated that the Commissioners can individually express their concerns over the project in response to the EIR or to individual Board of Supervisors' offices. Ms. Baker stated that staff in the next week will attempt to find out which agencies have commented on the EIR and what the comments were. This information will be emailed to the Commissioners.

Chair Kruger suggested moving Item 4c. to next month meeting due to time constraints. There were no objections.

B. 2014 Departmental Fee Revisions and New Fees

Ms. Baker introduced Ellen Doucette, the Department Section Head of Administrative Services who will be presenting information on the Departmental fee revisions and new fees that will go before the Board of Supervisors (BOS) on April 22nd. Ms. Doucette stated that fees have not been raised since 2009, and discussed the process whereby staff came up with the proposed fees. They looked at the cost of performing the services, and surveyed other comparable facilities on what they charge for the same service. The changes will affect parking fees, new annual senior passes, permits, wedding packages, youth day camp, special recreation instruction services, and the WATER program sailing camps. If approved the proposed fees are expected to generate an additional \$1.2 million annually, effective May 1, 2014, except for parking fees, which will need to go before the Coastal Commission for approval. Ms. Doucette asked the Commission to endorse the recommendation. Chair Kruger suggested increasing the special use permit from \$250 to \$275. Commissioner Powell had concerns with the senior parking pass fee and inquired as to why seniors would be charged for it. Ms. Doucette responded that the new fees would extend more benefits to the seniors and the fee covered the cost of processing thousands of permits each year. Commissioner Dagit voiced her concern with the inconsistency on how rates are increased. **Chair Kruger took a survey** to see who was in support of staff recommendation. Commissioner Powell and O'Donnell voted for the increase, except for the proposed new charge on the annual senior parking pass.

Ayes: 7 – Chair Kruger, Milam, Sallee, Powell, Dougher, O'Donnell, Woodell.
Noes: 1 – Dagit

5. STAFF REPORTS

A. Ongoing Activities Report

Report received and filed.

B. Beach and Marina del Rey Special Events

Report received and filed.

C. Facilities and Property Maintenance Division Report

Mr. Foreman stated that at the last meeting he recognizes that some of the Commissioners have expressed a desire to be more informed about what is going on along the coast line. He will be providing a written report of projects his division is working on. Mr. Foreman showed photos that were taken during the weekend storm and spoke on each photo.

D. Capital Projects Status Report

Report received and filed.

E. Lifeguard Report

Assistant Chief Steve Moseley reported that the Junior Lifeguard registration has started and that over 900 kids signed up since that morning. They are expecting to have close to 4,000 kids this year. He informed the Commissioners that Chief Frazier and interim Lifeguard Chief Nugent are both retiring, so at this time there are no Lifeguard Chiefs. He reported that one week after the storm hit there were record high temperature. For the first two weeks in March they had over 800 rescues, and 700 medical calls. A training academy will take place in May. He reported that the Ford sponsorship has expired and they are on a one year extension. They are in a preliminary discussion with both GM and Toyota on a vehicle sponsorship. No reports on shark sightings, and they are still working on the policy and signage with the other agencies.

6. **COMMISSIONER COMMENTS**

Chair Kruger reported that the subject of jurisdiction and beach revenues be place on next month agenda.

Commissioner Milam suggested that regular staff reports be received and filed unless there were questions from the Commissioners.

7. **COMMUNICATION FROM THE PUBLIC**

None

8. **NEXT MEETING DATE AND LOCATION**

The next meeting is scheduled for April 23, 2014, 9:30 a.m. at Burton Chace Park

9. **ADJOURNMENT**

Chair Kruger adjourned the meeting at 11:35 a.m.

Respectfully Submitted,
Mindy Sherwood
Interim Commission Secretary



Caring for Your Coast

♦ ♦ ♦
Gary Jones
Acting Director

Kerry Silverstrom
Chief Deputy

John Kelly
Deputy Director

April 17, 2014

TO: Beach Commission

FROM:  Gary Jones, Acting Director

SUBJECT: **AGENDA ITEM 4A – BRIEFING ON LOS ANGELES REGIONAL WATER QUALITY CONTROL BOARD ON COPPER LEVELS IN MARINA DEL REY**

On February 6, 2014, the Los Angeles Regional Water Quality Control Board (Regional Board) approved revisions to the Marina del Rey Harbor Toxic Pollutants Total Maximum Daily Load (TMDL) originally adopted in 2006. The two aspects of the TMDL revisions that most critically affect the Marina del Rey community are the new copper water column requirements and the required sediment remediation of the entire harbor. The 2006 TMDL established load requirements for several different toxic pollutants, including copper, lead, zinc, and PCBs within the harbor's back basins (Basins D, E, and F).

The Regional Board attributes elevated levels of dissolved copper in the harbor primarily to copper anti-fouling paints applied to boat hulls. To reduce the amount of copper being discharged into the harbor to acceptable levels, the revised TMDL requires that 85% of boats in the harbor switch to copper-free paint on their hulls. In order to apply many of the available non-copper hull paints, boat owners need to strip off existing paint. The cost of stripping a boat's hull has been estimated at \$6,000 to \$7,000 for a 35' boat.

Further, the revised TMDL requires that the contamination in the existing sediment in the harbor be addressed. Sediment remediation would require dredging and/or capping of the entire harbor. In addition to lengthy and extensive permitting that would be required to dredge the entire harbor, the Regional Board estimates the potential cost of such a project would be \$200 million. This magnitude of dredging would disturb anchorage operations throughout the harbor, causing business interruptions and loss of service for lessees and boaters.

Following the Regional Board's approval on February 6, 2014, the TMDL next goes to the State Water Resources Control Board (State Board) for approval, and then finally to the Environmental Protection Agency for adoption. On April 9, 2014, the State Board posted a "Notice of Opportunity to Comment" on the revised TMDL approved by the Regional Board. Comments are due noon, May 13, 2014. Based on this step having taken place, the revised TMDL may be before the State Board in July or August. The County will continue to work with Regional Board staff on TMDL implementation issues and prepare for the upcoming review by the State Board.

GJ:cm





(310) 305-9503 ♦ 13837 Fiji Way, Marina del Rey, CA 90292 ♦ beaches.lacounty.gov

Caring for Your Coast

♦ ♦ ♦
Gary Jones
Acting Director

Kerry Silverstrom
Chief Deputy

John Kelly
Deputy Director

April 17, 2014

TO: Beach Commission
FROM: *Carol Boh for*
Gary Jones, Acting Director

SUBJECT: **AGENDA ITEM 4B – BEACH OPERATIONS AND REVENUE**

Item 4B pertains to a presentation regarding beach operations and revenue for Los Angeles County beaches that the Department of Beaches and Harbors operates and/or maintains. The information contained in the presentation will be finalized after your review and will be issued to each Commissioner as a reference manual at a subsequent meeting.

Department staff will be available at the meeting to respond to any questions or concerns you may have.

GJ:CB:pr

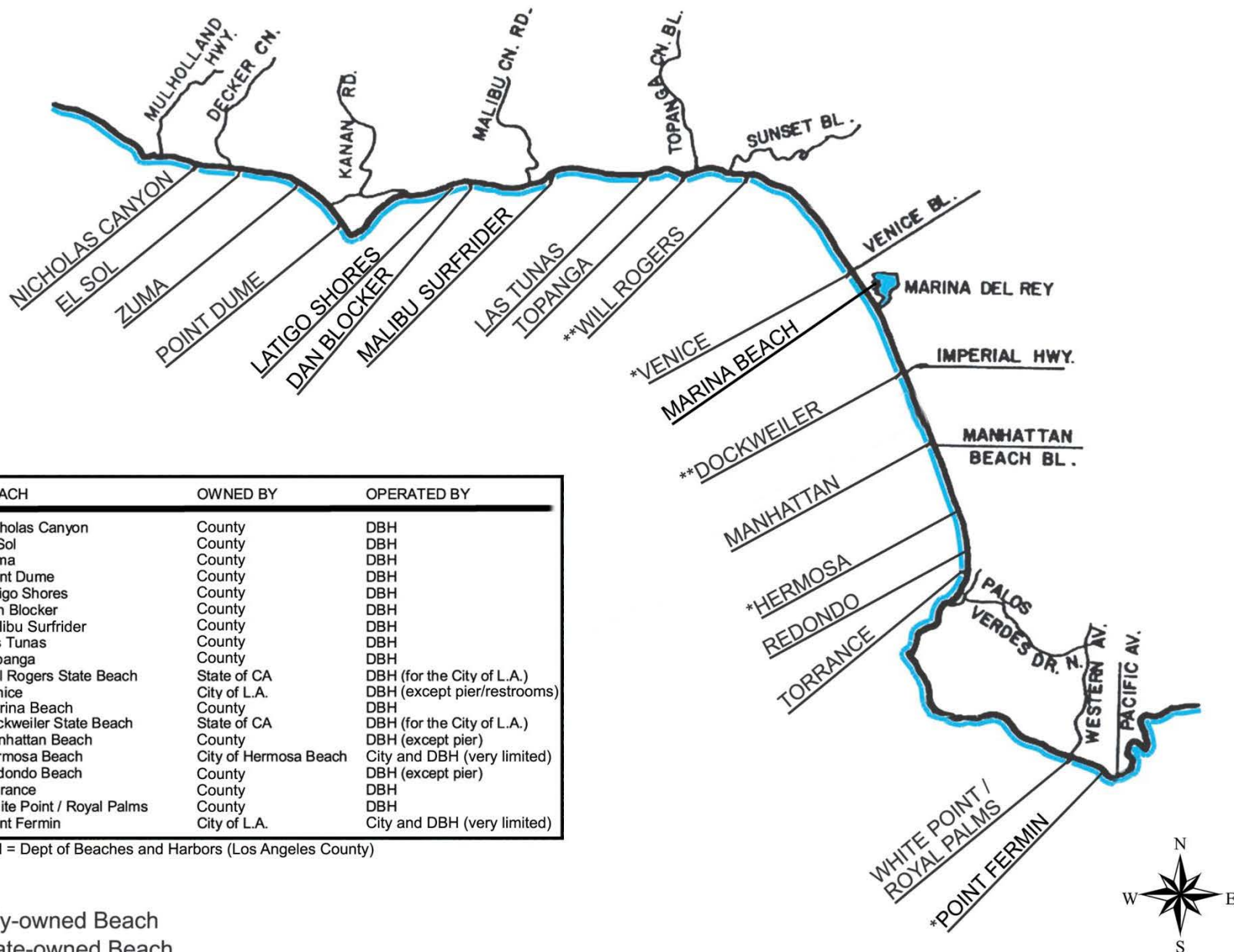


LOS ANGELES COUNTY OWNED & OPERATED BEACH FACILITIES



Caring for Your Coast

BEACHES OWNED OR OPERATED BY LOS ANGELES COUNTY



Beaches Owned or Operated by Los Angeles County

BEACH	OWNED BY	OPERATED BY
Nicholas Canyon	County	DBH
El Sol	County	DBH
Zuma	County	DBH
Point Dume	County	DBH
Latigo Shores	County	DBH
Dan Blocker	County	DBH
Malibu Lagoon (SURFRIDER)	County	DBH
Las Tunas	County	DBH
Topanga	County	DBH
Will Rogers State Beach	State of CA	DBH (for the City of L.A.)
Venice	City of L.A.	DBH (except pier, restrooms)
Marina Beach	County	DBH
Dockweiler State Beach	State of CA	DBH (for the City of L.A.)
Manhattan Beach	County	DBH (except pier)
Hermosa Beach	City of Hermosa Beach	City & DBH (very limited)
Redondo Beach	County	DBH (except pier)
Torrance	County	DBH
Royal Palms	County	DBH
White Point	County	DBH
Point Fermin	City of L.A.	DBH (beach only)

LEGEND

	LAX
	BEACH
	UNINCORP COUNTY
	CULVER CITY
	EL SEGUNDO
	HERMOSA BEACH
	LOS ANGELES
	MALIBU
	MANHATTAN BEACH
	PALOS VERDES ESTATES
	RANCHO PALOS VERDES
	REDONDO BEACH
	ROLLING HILLS
	ROLLING HILLS ESTATES
	SANTA MONICA
	TORRANCE

Santa Monica Bay



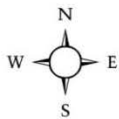
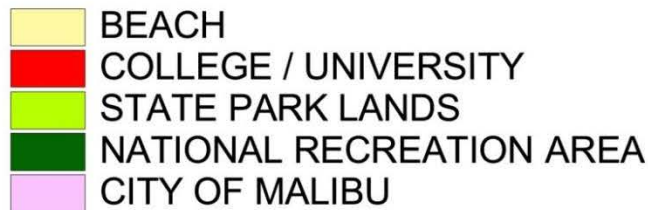
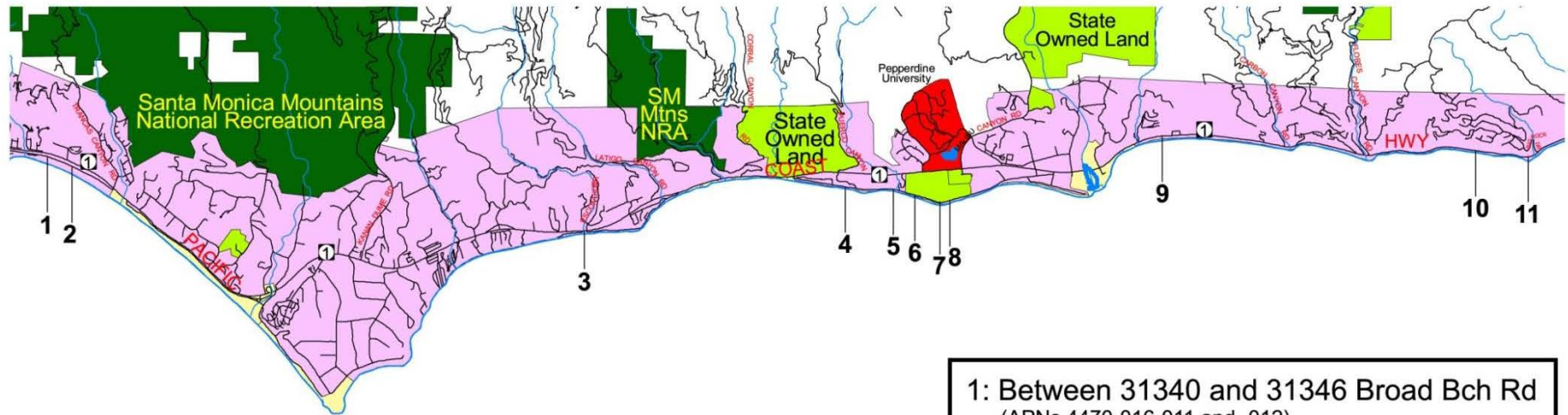
Map Feb 2011 by Los Angeles County Department of Beaches and Harbors, Planning Division.
 Basemap source: Thomas Bros 2003 digital database files.
 Aerial Imagery: Google Maps



ROYAL PALMS
 WHITE POINT
 POINT FERMIN

Los Angeles County Department of Beaches and Harbors

Malibu Public Beach Accessways



Map June 2012 by LA County Dept of Beaches and Harbors, Planning Division

Approximate Scale: 1 inch = 1.25 miles.

- 1: Between 31340 and 31346 Broad Bch Rd
(APNs 4470-016-011 and -012)
- 2: Between 31138 and 31202 Broad Bch Rd
(APNs 4470-015-011 and -012)
- 3: 27148 PCH (Escondido Creek)
(APN 4460-027-001)
- 4: Between 25116 and 25120 Malibu Rd
(APNs 4459-015-003 and -023)
- 5: Between 24712 and 24xxx Malibu Rd
(APNs 4458-012-032 and 4458-013-001)
- 6: Between 24604 and 24572 Malibu Rd
(APNs 4458-012-017 and -036)
- 7: Between 24434 and 24436 Malibu Rd
(APNs 4458-011-027 and -028)
- 8: Between 24314 and 24320 Malibu Rd
(APNs 4458-011-012 and -013)
- 9: 22706 PCH-adjacent (Zonker Harris)
(APN 4452-004-040)
- 10: 20330 PCH (Moonshadows)
(APN 4450-004-031)
- 11: Between 20000 and 19958 PCH
(APNs 4450-001-024 and -025)

Approximate Lengths of Beaches Owned or Maintained by Los Angeles County

BEACH	FEET	MILES
Nicholas Canyon County Beach	3,520	0.67
El Sol County Beach	376	0.07
Zuma County Beach	8,976	1.70
Point Dume County Beach	5,285	1.00
Latigo Shores County Beach	220	0.04
Dan Blocker County Beach	5,810	1.10
Malibu Lagoon (Surfrider) County Beach	2,210	0.42
Las Tunas County Beach	1,520	0.29
Topanga County Beach	5,280	1.00
Will Rogers State Beach	15,310	2.90
Venice City Beach	11,620	2.20
Marina Beach	1,400	0.27
Dockweiler State Beach	20,065	3.80
Manhattan County Beach	11,090	2.10
Hermosa City Beach	9,500	1.80
Redondo County Beach	8,450	1.60
Torrance County Beach	3,530	0.67
Royal Palms County Beach	3,850	0.73
White Point County Beach	4,000	0.76
Point Fermin City Beach	8,445	1.60
Totals:	130,457	24.71
Source for footage: Planning Division GIS files, September 24, 2012.		

Approximate Areas[†] of DBH-Maintained Parking Lots

Lot	Approximate Address	Area (sq. ft.)	Area (acres)
Nicholas Cyn	34000 PCH, Malibu	51,280	1.18
Zuma Entrance	29600 PCH, Malibu	4,320	0.10
Zuma Lot #1	29600 PCH, Malibu	96,320	2.21
Zuma Lot #2	29750 PCH, Malibu	75,040	1.72
Zuma Lot #3	29850 PCH, Malibu	26,450	0.61
Zuma Lot #4	30050 PCH, Malibu	29,400	0.67
Zuma Lot #5	30056 PCH, Malibu	50,240	1.15
Zuma Lot #6	30056 PCH, Malibu	39,680	0.91
Zuma Lot #7	30100 PCH, Malibu	59,840	1.37
Zuma Lot #8	30180 PCH, Malibu	95,200	2.19
Zuma Lot #9	30300 PCH, Malibu	28,000	0.64
Zuma Lot #10	30500 PCH, Malibu	12,800	0.29
Zuma Lot #11	30550 PCH, Malibu	24,320	0.56
Zuma Lot #12	30600 PCH, Malibu	88,800	2.04
Total Zuma:		630,410	14.47
Point Dume	7103 Westward Beach Rd, Malibu	106,880	2.45
Malibu Lagoon (Surfrider)	23000 PCH, Malibu	29,800	0.68
Topanga East	18700 PCH, Malibu	42,240	0.97
Topanga West (unpaved)	18700 PCH, Malibu	32,900	0.76
Total Topanga:		75,140	1.72
Will Rogers Lot #1	14800 PCH, Santa Monica	49,920	1.15
Will Rogers Lot #2 East	15800 PCH, Pacific Palisades	143,360	3.29
Will Rogers Lot #2 West	15800 PCH, Pacific Palisades	172,800	3.97
Will Rogers Lot #3	15800 PCH, Pacific Palisades	224,000	5.14
Will Rogers Lot #4 (Gladstone's)*	17300 PCH, Pacific Palisades	*	*
Will Rogers Lot #5 (Castle Rock)	17700 PCH, Pacific Palisades	24,960	0.57
Total Will Rogers:		656,640	15.07
*Lot not operated by Los Angeles County			

[†]Areas as determined by Planning Division GIS files.

Approximate Areas[†] of DBH-Maintained Parking Lots

Lot	Approximate Address	Area (sq. ft.)	Area (acres)
Venice (Rose Ave)	300 Ocean Front Walk, Venice	96,200	2.21
Venice (Venice Blvd)	2700 Ocean Front Walk, Venice	139,520	3.20
Venice (Washington Blvd)	3100 Ocean Front Walk, Venice	108,800	2.50
Total Venice:		344,520	7.91
Marina Beach (Lot #10, parcel IR)	4101 Admiralty Way	87,667	2.01
Dockweiler (Entrance)	8255 Vista del Mar, Playa del Rey	3,520	0.08
Dockweiler Lot #1	8255 Vista del Mar, Playa del Rey	121,640	2.79
Dockweiler Lot #2	8255 Vista del Mar, Playa del Rey	124,800	2.87
Dockweiler Lot #3	8255 Vista del Mar, Playa del Rey	121,600	2.79
Dockweiler (RV Lot)	12001 Vista del Mar, Playa del Rey	212,800	4.89
Dockweiler (Bluff Lot)	12501 Vista del Mar, Playa del Rey	215,320	4.94
Dockweiler (62nd Ave)	6201 Pacific Ave, Playa del Rey	18,654	0.43
Dockweiler (Grand Ave)	6200 Vista del Mar, Playa del Rey	49,100	1.13
Total Dockweiler:		867,434	19.91
Torrance	387 Paseo de la Playa, Torrance	147,200	3.38
White Point	1900 S. Paseo del Mar, San Pedro	51,500	1.18
Royal Palms	1800 S. Paseo del Mar, San Pedro	33,520	0.77
Grand Total:		3,040,391 sq feet	69.80 acres

[†]Areas as determined by Planning Division GIS files.

Nicholas Canyon County Beach

(Approximately 40 acres)



- ① Parking Lot
- ② DBH-owned Moveable Lifeguard Tower
- ③ Restroom (33800 Nicholas Beach Rd) - **Closed**

400 200 0 400 800
Feet

Yellow = DBH maintained area
Red = County parcels

Map Sept 2012 by Los Angeles County Department of Beaches and Harbors, Planning Division

Photo date: Winter 2011



El Sol County Beach

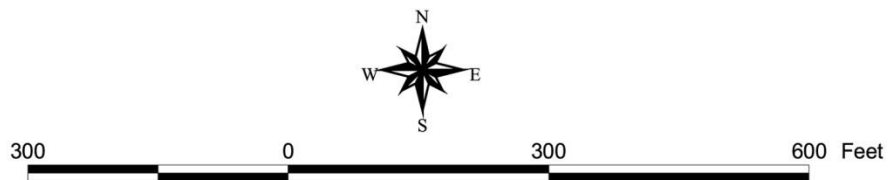
(Undeveloped; approximately 3.2 acres)



Length of beach = approximately 330 feet.
Beach address: approximately 33400 PCH

Yellow = DBH maintained area
Red = County parcels

Photo date: Winter 2011



Zuma County Beach (north section)

(Total Zuma: Approximately 94 acres)



- ① Parking Lot
- ② Restroom 9 (30490 PCH)
- ③ Restroom 8 (30300 PCH)
- ④ Restroom 7 (30180 PCH)
- ⑤ DBH-owned Moveable Lifeguard Tower

500 0 500 1000 Feet



Yellow = DBH maintained area
Red = County parcels

Map May 2012 by Los Angeles County Department of Beaches and Harbors, Planning Division

Zuma County Beach (south section)

(Total Zuma: Approximately 94 acres)

- ① Entrance Gate
- ② Parking Lot
- ③ DBH Maintenance Yard (30100 PCH)
- ④ Restroom 6 (30066 PCH)
- ⑤ Concession (30066 PCH)
- ⑥ Restroom 5 (30056 PCH)
- ⑦ Lifeguard HQ (30050 PCH)
- ⑧ Restroom 4 (29850 PCH)
- ⑨ Concession (29750 PCH)
- ⑩ Restroom 3 (29750 PCH)
- ⑪ Restroom 2 (29600 PCH)
- ⑫ Restroom 1 (6600 Westward Beach Rd)
- ⑬ DBH-owned Moveable Lifeguard Tower



Yellow = DBH maintained area
Red = County parcels



500 0 500 1000 Feet

Point Dume County Beach

(Approximately 30.0 acres)



Photo date: Winter 2011

- ① Entrance Booth
- ② Parking Lot
- ③ Restroom (6800 Westward Beach Rd)
- ④ Restroom/Lifeguard (6900 Westward Beach Rd)
- ⑤ Restroom (7130 Westward Beach Rd)
- ⑥ DBH-owned Moveable Lifeguard Tower

Yellow = DBH maintained area
Red = County parcels
Blue = Privately-owned parcel



500 0 500 1000 Feet

A horizontal scale bar with alternating black and white segments. It is marked with the numbers 500, 0, 500, and 1000, followed by the word 'Feet'.

Latigo Shores County Beach

(Undeveloped, 1.9 acres)



Dan Blocker County Beach

(Approximately 9.3 acres)



Photo date: Winter 2011

Yellow = DBH maintained area
Red = County parcels

- ① Chemical Toilet
- ② DBH-owned Moveable Lifeguard Tower

500 0 500 1000 Feet



Malibu Lagoon (Surfrider) County Beach

(Approximately 8.1 acres)



Photo date: Winter 2011

- ① Entrance Booth
- ② Parking Lot
- ③ Restroom (23300 PCH)
- ④ DBH-owned Moveable Lifeguard Tower

Yellow = DBH maintained area
Red = County parcels

500 0 500 1000 Feet



Las Tunas County Beach

(Approximately 1.9 acres)



Photo date: Winter 2011

- ① Chemical Toilet
- ② DBH-owned Moveable Lifeguard Tower

Yellow = DBH maintained area
Red = County parcels

200 0 200 400 Feet

Map Sept 2012 by Los Angeles County Department of Beaches and Harbors, Planning Division



Topanga County Beach

(Approximately 19.6 acres)



Yellow = DBH maintained area
Red = County parcels



Will Rogers State Beach

(Total Will Rogers: Approximately 99.2 acres)



500 0 500 1000 Feet

Yellow = DBH maintained area
Red = County parcels

Map May 2012 by Los Angeles County Department of Beaches and Harbors, Planning Division

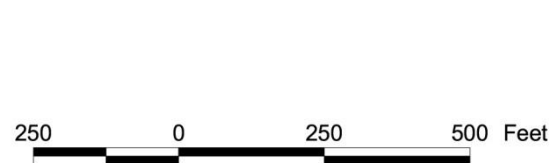
Will Rogers State Beach

(Total Will Rogers: Approximately 99.2 acres)



Photo date: Winter 2011

- ① Parking Lot 4 (Not maintained by County)
- ② DBH-owned Moveable Lifeguard Tower



Yellow = DBH maintained area
Red = County parcels

Will Rogers State Beach

(Total Will Rogers: Approximately 99.2 acres)



- ① Entrance Booth
- ② Parking Lot 3
- ③ DBH Maintenance Yard (16300 PCH)
- ④ Restroom D ("Bel Air", 16318 PCH)
- ⑤ Restroom C ("Temescal", 15994 PCH)
- ⑥ Concession (Temescal, 15996 PCH)
- ⑦ DBH-owned Moveable Lifeguard Tower



250 0 250 500 Feet

Yellow = DBH maintained area
Red = County parcels

Will Rogers State Beach

(Total Will Rogers: Approximately 99.2 acres)



- ① Parking Lot 2
- ② Restroom B ("Lifeguard", 15002 PCH)
- ③ Lifeguard HQ (15000 PCH)
- ④ DBH-owned Moveable Lifeguard Tower



250 0 250 500 Feet

Yellow = DBH maintained area
Red = County parcels

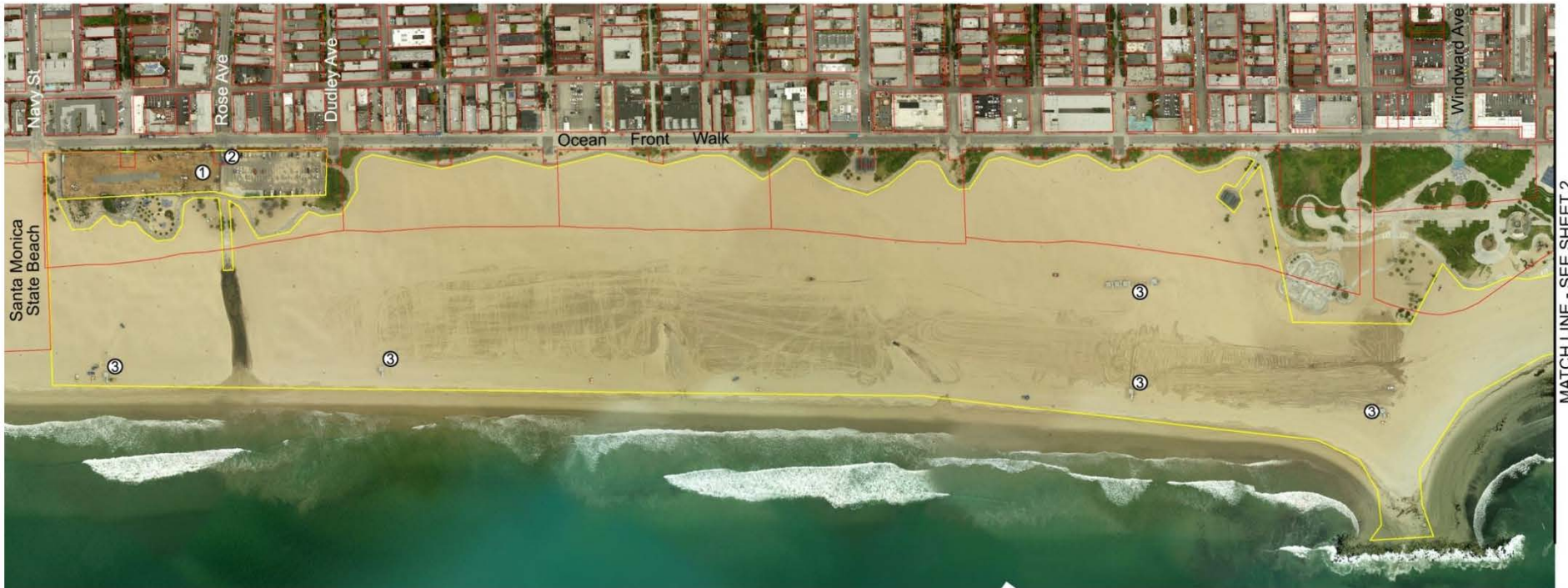
Will Rogers State Beach

(Total Will Rogers: Approximately 99.2 acres)



Venice City Beach

(Approximately 132 acres total)



Map not survey-accurate; for reference only.

Photo Date: Winter 2011



- ① Parking Lot, Rose Ave (300 Ocean Front Walk)
- ② Parking Booth
- ③ DBH-owned Moveable Lifeguard Tower

500 0 500 1000 Feet

Yellow = DBH maintained area
Red = County parcels

Venice City Beach

(Approximately 132 acres total)



Photo Date: Winter 2011

Map not survey-accurate; for reference only.

- ① Parking Lot, Venice Blvd (2100 Ocean Front Walk)
- ② Parking Booth
- ③ Restroom (2100 Ocean Front Walk) - **Maintained by LA City**
- ④ DBH Maintenance Yard/Lifeguard HQ (2300 Ocean Front Walk)
- ⑤ Parking Lot, Washington Blvd (3100 Ocean Front Walk)
- ⑥ Restroom (3116 Ocean Front Walk) - **Maintained by LA City**
- ⑦ Covered Picnic Area - **Maintained by LA City**
- ⑧ DBH-owned Moveable Lifeguard Tower

Yellow = DBH maintained area
Red = County parcels



500 0 500 1000 Feet

Map March 2012 by Los Angeles County Department of Beaches and Harbors, Planning Division

Venice City Beach

(Approximately 132 acres total)



Map not survey-accurate; for reference only.

① DBH-owned Moveable Lifeguard Tower

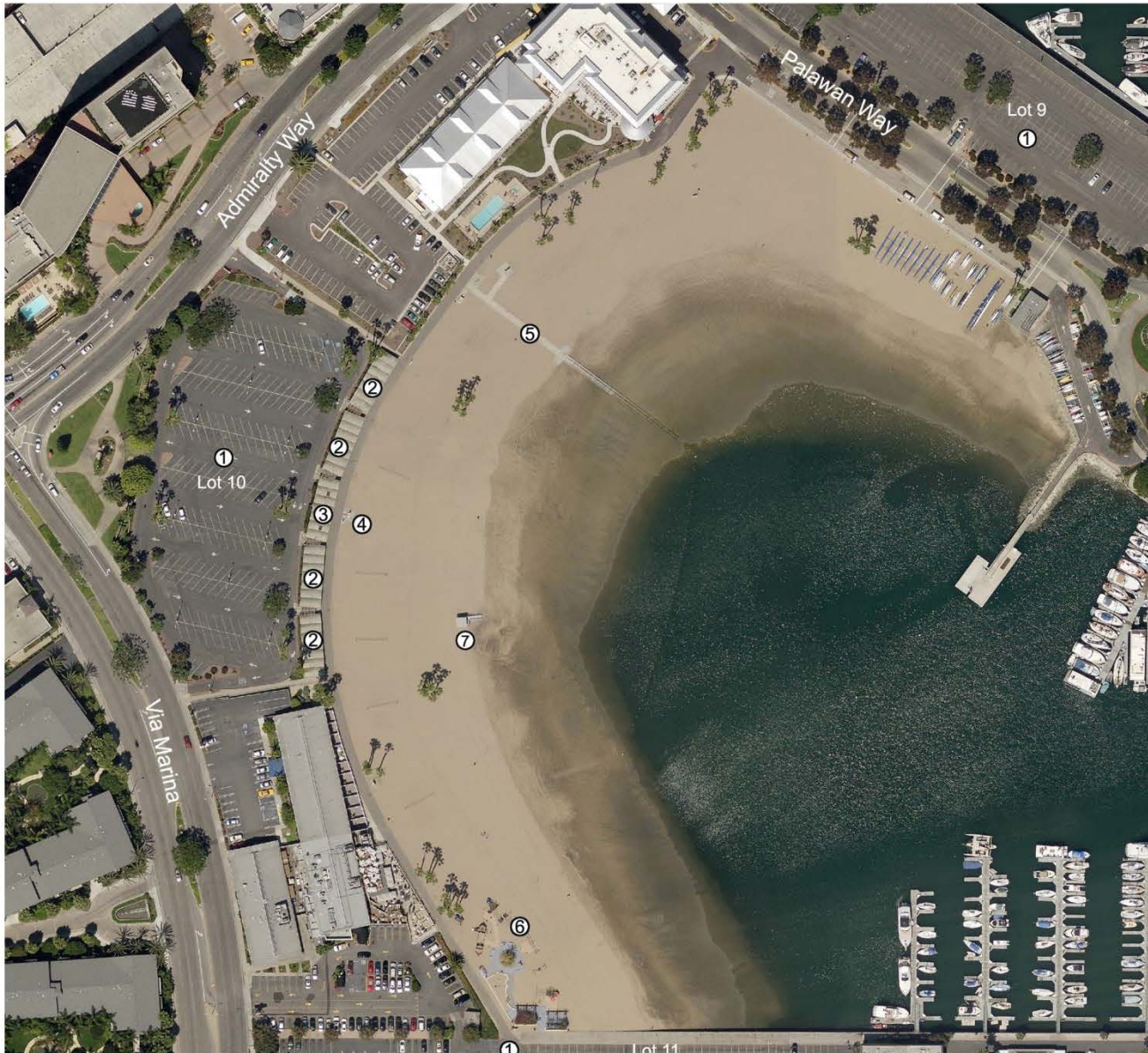
Yellow = DBH maintained area
Red = County parcels

500 0 500 1000 Feet



Marina Beach

(Approximately 5.9 acres)



- ① Public Parking
- ② Covered Picnic Area
- ③ Restroom
- ④ Water Fountain / Shower
- ⑤ ADA Access Ramp
- ⑥ Playground
- ⑦ DBH-owned Moveable Lifeguard Tower



Photo date: Winter 2011

250 0 250 500 Feet

Dockweiler State Beach

(Total Dockweiler: Approximately 250 acres)



Map not survey-accurate; for reference only.

Photo date: Winter 2011

- ① 62nd Ave Parking Lot (6201 Pacific Ave)
- ② Restroom (Culver, 6801 Ocean Front Walk)
- ③ Restroom (Yawl St, 5400 Ocean Front Walk)
- ④ Lifeguard Tower (6900 Pacific Ave)
- ⑤ DBH-owned Moveable Lifeguard Tower

Yellow = DBH maintained area
Red = County parcels



500 0 500 1000 Feet

Dockweiler State Beach

(Total Dockweiler: Approximately 250 acres)



Map not survey-accurate; for reference only.

Photo date: Winter 2011

- ① DBH Maintenance Yard (8255 Vista del Mar)
- ② Lifeguard Headquarters (8255 Vista del Mar)
- ③ Restroom (Gillis, 7901 Vista del Mar)
- ④ DBH-owned Moveable Lifeguard Tower



500 0 500 1000 Feet

Yellow = DBH maintained area
Red = County parcels

Dockweiler State Beach

(Total Dockweiler: Approximately 250 acres)



- ① Parking Lot #3
- ② Parking Lot #2
- ③ Parking Lot #1
- ④ Entrance Booth (12001 Vista del Mar)
- ⑤ Concession (9401 Vista del Mar)
- ⑥ Restroom (Kilgore, 9401 Vista del Mar)
- ⑦ Restroom (Deauville, 8801 Vista del Mar)
- ⑧ DBH-owned Moveable Lifeguard Tower
- ⑨ Lifeguard Tower 56 (11800 Vista del Mar)

Yellow = DBH maintained area
Red = County parcels

Dockweiler State Beach

(Total Dockweiler: Approximately 250 acres)



Map not survey-accurate; for reference only.

Photo date: Winter 2011

- ① R.V. Parking Lot (12001 Vista del Mar)
- ② Restroom
- ③ Bluff Lot (12501 Vista del Mar)
- ④ Concession/Restroom (12501-3 Vista del Mar)
- ⑤ Hang-gliding Concession/Office
- ⑥ Grand Ave Parking Lot (~12800 Vista del Mar)
- ⑦ DBH-owned Moveable Lifeguard Tower
- ⑧ DSB Youth Center (12505 Vista del Mar)



500 0 500 1000 Feet

Yellow = DBH maintained area
Red = County parcels

Map May 2012 by Los Angeles County Department of Beaches and Harbors, Planning Division

Manhattan County Beach (north section)

(Total Manhattan Beach: Approximately 91 acres)



- ① Restroom (El Porto, 4217 The Strand)
- ② Concession (4119 The Strand)
- ③ Restroom/Lifeguard/Maintenance (Rosecrans, 3621 The Strand)
- ④ Lifeguard Training Center/Restroom (2600 The Strand)
- ⑤ Restroom/Lifeguard (Marine Ave, 2301 The Strand)
- ⑥ DBH-owned Moveable Lifeguard Tower

Yellow = DBH maintained area
Red = County parcels



500 0 500 1000 Feet

Hermosa City Beach (north section)

(Total Hermosa Beach: Approximately 77 acres)



Map not survey-accurate; for reference only.

Photo date: Winter 2011

- ① Restroom (22nd St, 2201 The Strand)
- ② DBH-owned Moveable Lifeguard Tower



500 0 500 1000 Feet

Yellow = DBH maintained area
Red = County parcels

Map March 2012 by Los Angeles County Department of Beaches and Harbors, Planning Division

Hermosa City Beach (south section)

(Total Hermosa Beach: Approximately 77 acres)



Map not survey-accurate; for reference only.

Photo date: Winter 2011

- ① Restroom (14th St, 1401 The Strand) - **Closed**
- ② Restroom (1191 The Strand)
- ③ Southern Lifeguard HQ (1200 The Strand)
- ④ Restroom (2nd St, 201 The Strand)
- ⑤ DBH-owned Moveable Lifeguard Tower



500 0 500 1000 Feet

Yellow = DBH maintained area
Red = County parcels

Map March 2012 by Los Angeles County Department of Beaches and Harbors, Planning Division

Redondo County Beach (north section)

(Total Redondo: Approximately 51.2 acres)



Map not survey-accurate; for reference only.

Photo date: Winter 2011

- ① Restroom (Ainsworth, 501 Harbor Dr)
- ② Restroom/Lifeguard (Sapphire, 577 Esplanade)
- ③ Lifeguard (Topaz/RCO, 700 Esplanade)
- ④ Restroom (Topaz, 629 Esplanade)
- ⑤ Restroom/Lifeguard (Knob Hill, 741 Esplanade)
- ⑥ Tractor Garage (Knob Hill, 743 Esplanade)
- ⑦ DBH-owned Moveable Lifeguard Tower
- ⑧ View Deck



Yellow = DBH maintained area
Red = County parcels

Redondo County Beach (south section)

(Total Redondo: Approximately 51.2 acres)



- ① Restroom/Lifeguard HQ (Ave C, 1101 Esplanade)
- ② Restroom (Ave G, 1409 Esplanade)
- ③ Restroom (Ave I, 1719 Esplanade)
- ④ DBH-owned Moveable Lifeguard Tower
- ⑤ View Deck



Yellow = DBH maintained area
Red = County parcels

Map March 2012 by Los Angeles County Department of Beaches and Harbors, Planning Division

Torrance County Beach

(Approximately 22.9 acres)



Map not survey-accurate; for reference only.

- ① Restroom (305 Paseo De La Playa)
- ② Entrance Booth
- ③ Restroom/Lifeguard (TCO, 349 Paseo De La Playa)
- ④ Concession (357 Paseo De La Playa)
- ⑤ Parking Lot (~387 Paseo De La Playa)
- ⑥ DBH-owned Moveable Lifeguard Tower

Photo date: Winter 2011

500 0 500 1000 Feet



Yellow = DBH maintained area
Red = County parcels

Map March 2012 by Los Angeles County Department of Beaches and Harbors, Planning Division

Royal Palms County Beach

(Approximately 18.8 acres)



Map not survey-accurate; for reference only.

- ① Parking Lot
- ② Restroom (1799 Kay Fiorentino)
- ③ Lifeguard Tower

Yellow = DBH maintained area
Red = County parcels

500 0 500 1000 Feet



White Point County Beach

(Approximately 27.3 acres)

Yellow = DBH maintained area
Red = County parcels

Photo date: Winter 2011

Map not survey-accurate; for reference only.

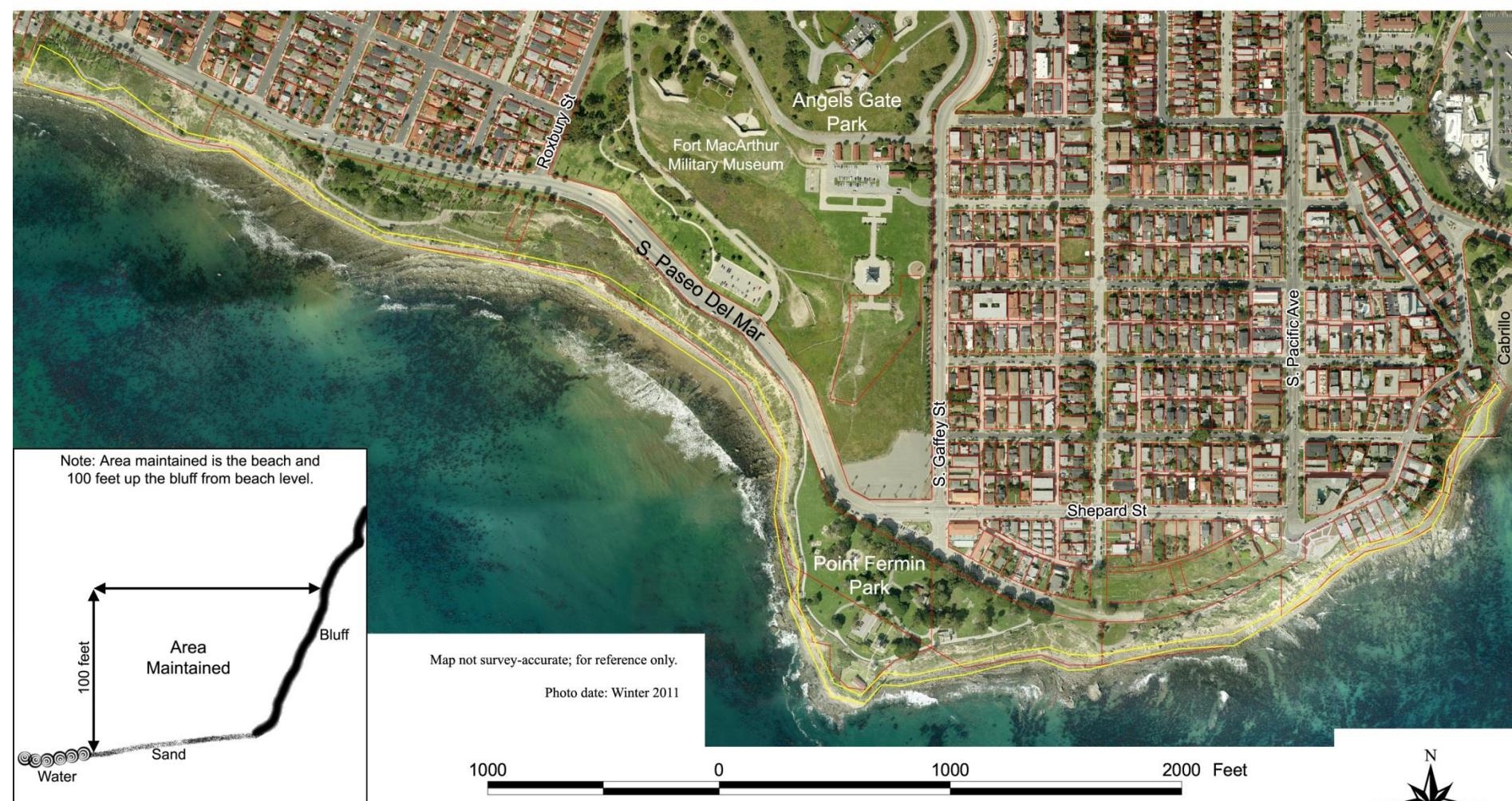
- ① Parking Lot
- ② Restroom (1900 S. Paseo Del Mar) - **Closed**
- ③ Parking Booth

500 0 500 1000 Feet



Pt. Fermin City Beach

(Approximately 10.1 acres)



Yellow = DBH maintained area
Red = County parcels

Map March 2012 by Los Angeles County Department of Beaches and Harbors, Planning Division

ROLE OF DEPARTMENT OF PUBLIC WORKS

- Maintenance of the Marvin Braude Bike Trail from Torrance to Santa Monica. The Will Rogers portion of the trail is maintained by the City of Los Angeles.
- Maintenance of sewer pumps through Departmental Service Order (DSO).
- Sweep/clean beach and Marina public parking lots through (DSO).
- In Marina del Rey, the Department of Public Works is responsible for maintaining Fiji Way, Admiralty Way, and Via Marina.

ACTUAL BEACH OPERATING EXPENSE AND REVENUE

FY 2012-13	Total
<u>Beach Maintenance</u>	
Salaries and Employee Benefits	\$ 15,530,732
Services & Supplies	\$ 10,685,213
Equipment & Other Financing Charges	\$ 1,735,914
Total Beach Maintenance	\$ 27,951,859
<u>Beach Revenue</u>	
Total Revenue	\$ 18,337,955
NET COUNTY COST	\$ (9,613,905)

ACTUAL BEACH OPERATING EXPENSE AND REVENUE

FY 2012-13 Revenue Categories	Total
Parking Revenue	\$ 10,105,287
Concession Rents	\$ 2,547,461
Vehicle Code Fines - citation	\$ 872,909
Charges for Services – beach permits and reimbursement for services	\$ 3,400,070
Miscellaneous Revenue – Marketing & Misc.	\$ 766,317
Film and Licenses, Permits	\$ 323,611
Other Financing Sources	\$ 322,301
TOTAL REVENUE	\$ 18,337,955

BEACHES OWNED OR OPERATED BY LOS ANGELES COUNTY – USE PERMITS ISSUED

Zuma

Point Dume

Malibu Lagoon

Topanga

Will Rogers

Venice

Marina Beach

Dockweiler

Manhattan

Redondo

Torrance

Royal Palms

White Point

BEACHES OWNED OR OPERATED BY LOS ANGELES COUNTY - NO USE PERMITS ISSUED

- Nicholas Canyon - Too much erosion to issue permits for sand area/sometimes issue permits for parking lot only.
- El Sol – No Lifeguards, no beach access, and no parking.
- Latigo Shores - A tiny portion belongs to the County, area is mostly private. Very little beach area to issue permits.
- Dan Blocker - Area is too rocky to issue permits.
- Las Tunas - Very little beach and area is too rocky to issue permits.
- Hermosa - City of Hermosa Beach jurisdiction
- Point Fermin - City of Los Angeles jurisdiction



Caring for Your Coast

Gary Jones
Acting Director

Kerry Silverstrom
Chief Deputy

John Kelly
Deputy Director

April 17, 2014

TO: Beach Commission

FROM: *Carol Baker for*
Gary Jones, Acting Director

SUBJECT: **AGENDA ITEM 5A - ONGOING ACTIVITIES REPORT**

BOARD ACTIONS ON ITEMS RELATING TO BEACHES

On March 18, 2014, the Board of Supervisors adopted a resolution authorized the acceptance of grant funding totaling \$69,815 from the State of California Coastal Conservancy for the Los Angeles county Public Beach Sea Level Rise Vulnerability Assessment Study (Study); approve an appropriation adjustment in the amount of \$70,000 to increase appropriation and revenue in the Fiscal Year 2013-14 Adjusted Budget to account for the grant funds; authorize the Acting Director of Beaches and Harbors to sign all necessary documents to obtain and accept the grant for purpose of funding the Study and to act as lead agent for the County when conducting business with the California Coastal Conservancy on any and all matters related to the grant.

On April 15, 2014, the Board of Supervisors approved the recommendation to appoint Gary D. Jones to the position of Director for the Department of Beaches and Harbors.

GJ:CB:ms



Caring for Your Coast

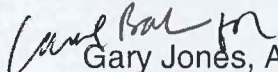
♦ ♦ ♦
Gary Jones
Acting Director

Kerry Silverstrom
Chief Deputy

John Kelly
Deputy Director

April 17, 2014

TO: Beach Commission

FROM:  Gary Jones, Acting Director

SUBJECT: **AGENDA ITEM 5B – BEACH AND MARINA DEL REY SPECIAL EVENTS**

BEACH EVENTS

DOCKWEILER YOUTH CENTER TAI CHI

Dockweiler Youth Center ♦ 12505 Vista Del Mar ♦ Los Angeles
Mondays and Thursdays
8:30 a.m. - 9:30 a.m.

Come and experience Tai Chi class to learn and practice the forms that promote relaxation, balance, coordination, flexibility and strength.

For more information call: (310) 726-4128

DOCKWEILER YOUTH CENTER MEDITATION CLASS

Dockweiler Youth Center ♦ 12505 Vista Del Mar ♦ Los Angeles
Wednesdays
11:00 a.m. – 1:00 p.m.

Join the meditation class to learn, build and apply meditation to your life.

For more information call: (310) 726-4128

SHORE FISHING

Dockweiler Youth Center ♦ 12505 Vista del Mar ♦ Los Angeles, CA 90245
Saturdays
9:00 a.m. – 10:30 a.m.

The Los Angeles County Department of Beaches and Harbors (Department) is offering an introduction to shore fishing class. Come enjoy a beautiful morning of fishing from the shores



of Dockweiler Beach. Fishing poles and bait will be provided at no cost. All ages are welcome. Anyone under the age of 12 years old must be accompanied by an adult. Anyone over the age of 16 years old must present a valid California fishing license to participate. Fishing license can be purchased locally at West Marine: 4750 Admiralty Way, Marina del Rey, CA, 90292, (310)823-5357 or Marina del Rey Sportfishing: 13759 Fiji Way, Marina del Rey, CA, 90292 (310)371-3712. Please call to pre-register at (310)726-4128. *Limited to 10 participants per session.

For more information call: (310)726-4128

DOCKWEILER YOUTH CENTER MAKE IT AND TAKE IT CRAFT DAY

Dockweiler Youth Center ♦ Lobby ♦ 12505 Vista Del Mar ♦ Los Angeles
Saturdays
10:00 a.m. – 11:00 a.m.

The Department is offering a FREE crafts class every Saturday morning. All children under 12 are welcome with an adult.

For more information call: (310) 726-4128

TOUR DE PIER

Manhattan Beach Pier ♦ 2 Manhattan Beach Blvd ♦ Manhattan Beach, CA 90266
Sunday, May 18, 2014
7:30 a.m. – 1:30 p.m.

The 2nd Annual Tour de Pier is a unique fundraising event that brings one of the trendiest indoor fitness activities – stationary cycling – to the gorgeous outdoors of Manhattan Beach. Ride in place with an ocean view. In addition to the cycling portion of the Tour de Pier, the event will include a Health Expo with a number of fitness/health related sponsors; a Fun Zone with games, moon bounces and more.

For registration or questions visit: www.tourdepier.com

MARINA DEL REY EVENTS

BURTON CHACE PARK WALKING CLUB

Burton Chace Park ♦ Lobby ♦ 13650 Mindanao Way ♦ Marina del Rey
Tuesdays & Thursdays
10:30 a.m. - 11:30 a.m.

The Department is sponsoring a FREE one-hour walking club. Get your exercise while taking

in the beautiful view of the Marina del Rey harbor. Please RSVP by calling (310) 305-9595.

BURTON CHACE PARK FITNESS CLUB

Burton Chace Park ♦ Lobby ♦ 13650 Mindanao Way ♦ Marina del Rey
Wednesdays
11:30 a.m. – 12:30 p.m.

The Department is offering FREE outdoor group workout sessions. Come get in shape with an experienced instructor in beautiful Burton Chace Park. Ages 13 and up. Please RSVP by calling (310) 305-9595.

For more information call: (310) 305-9595

BURTON CHACE PARK SENIOR RECREATION PROGRAM

Burton Chace Park ♦ Lobby ♦ 13650 Mindanao Way ♦ Marina del Rey
2nd and 4th Wednesday of each month
10:00 a.m. – 12:00 p.m.

The Department is offering a new recreational program for senior citizens at Burton Chace Park. Come join fellow seniors for bingo, dancing, art projects, exercising and more.

For more information call: (310) 305-9595

MARINA DEL REY FARMERS' MARKET

Marina "Mother's" Beach ♦ 4101 Admiralty Way ♦ Marina del Rey
Thursdays
9:00 a.m. – 2:00 p.m.

The Department, in collaboration with Southland Farmers' Markets Association, is offering the Marina del Rey Farmers' Market on Thursdays. The Marina del Rey Farmers' Market offers fresh, locally-grown organic and conventionally grown fruits and veggies. Also available are prepared and packaged foods, hand-crafted products and much more! Paid parking is available at beach parking lot #10 for 25 cents for every 15 minutes.

For more information call: Marina del Rey Visitors Center at (310) 305-9545

"BEACH EATS" GOURMET FOOD TRUCKS IN MARINA DEL REY

Marina "Mother's" Beach ♦ 4101 Admiralty Way ♦ Marina del Rey
Thursdays
5:00 p.m. – 9:00 p.m.

The Department is sponsoring gourmet food trucks in Marina del Rey on Thursday evenings beginning May 1st, offering delectable dishes plus a chance to picnic on the beach. The "Beach Eats" gourmet food truck events are held from 5 p.m. to 9 p.m. The assortment of trucks varies week to week. Paid parking is available at beach parking lot #10 for 25 cents for every 15 minutes.

For more information call: Marina del Rey Visitors Center at (310) 305-9545.

FISHERMAN'S VILLAGE WEEKEND CONCERT SERIES

Sponsored by Pacific Ocean Management, LLC
All concerts are from 1:00 p.m. - 4:00 p.m.

Saturday, April 26

The Kid & Nic Show, playing Contemporary

Sunday, April 27

2Azz1, playing Jazz Funk

For more information call: Pacific Ocean Management at (310) 822-6866

MARINAFEST-BOAT SHOW BOOTHS AND OPEN HOUSE

Burton Chace Park ♦ 13650 Mindanao Way ♦ Marina del Rey
Saturday, May 17, 2014
10:00 a.m. – 5 p.m.

Marinafest is a community-based waterfront celebration of the boating lifestyle with interactive, hands-on activities for all ages and levels of boating.

For more information visit: www.facebook.com/MarinaFest, call Cruising Yachts Unlimited at (310) 821-8300, or Action Watersports at (310) 827-2233

GJ:CB:cml



Caring for Your Coast

Gary Jones
Acting Director

Kerry Silverstrom
Chief Deputy

John Kelly
Deputy Director

April 17, 2014

TO: Beach Commission

FROM: Gary Jones, Director

SUBJECT: **AGENDA ITEM 5C – FACILITIES AND PROPERTY MAINTENANCE
DIVISION PROJECT REPORT**

Item 5C on your agenda provides the Commission with a listing of the Department's projects that are either planned or in progress. There were 101 service requests placed with the County's Internal Services Department to perform work that was considered too large for our internal staff to handle. Shown below is a brief list of those projects that exceed \$10,000:

- Installation of a fuel monitoring system at six locations – estimated cost \$166,000
- Fabricate restroom partition doors at Dockweiler – estimated cost \$18,000
- Repair stairs at Sunset Beach – Will Rogers - estimated cost \$200,000
- Replace partitions in the men's and women's restrooms at Manhattan Beach - estimated cost \$23,500
- Repave and stripe Dockweiler parking lots 1 and 2 and the parking lot at 62nd Avenue and Pacific - estimated cost \$401,392
- Build concrete block wall for dumpster in the RV Park - estimated cost \$15,000
- Connect water line to restroom at Point Dume - estimated cost \$37,000
- Replace existing transformer at Dockweiler - estimated cost \$23,275
- Roof replacement and repair of privacy screen at Avenue C restroom in Redondo Beach – estimated cost \$76,000

Listed below is a brief description of the projects identified:

Fuel Monitoring System - Six Locations - \$166,000

An electronic fuel access and monitoring system (Fuel Focus) is being installed at each beach maintenance service yard that will eliminate the current paper-based system and allow staff to print reports of usage and to monitor deliveries.

Status: The project is approximately 80% complete.



Fabricate Restroom Partition Doors at Dockweiler - \$18,000

This project includes removing existing damaged partition doors and installing swirled finish 20-gauge stainless steel partitions, and doors with high security hardware and continuous hinges for added protection against vandalism.

Status: The project is 75% complete.

Repair Stairs - Sunset Beach – \$200,000

This project will repair a wooden stairway near Sunset Boulevard and PCH that was damaged in a vehicle accident. The improvements will repair structural damage caused by the accident and replace other structural elements that have decayed and rusted due to the salt air environment and high surf.

Status: Plans and building permit stage.

Replace Partitions in the Men's and Women's Restroom - Manhattan Beach - \$23,500

This project includes removing existing damaged partition doors in both the men's and women's restroom at Marine Ave., and installing swirled finish 20-gauge stainless steel partitions and doors with high security hardware and continuous hinges for added protection against vandalism.

Status: This project is scheduled to be completed by summer 2014.

Repave and Restripe Parking Lots 1, 2 and 62nd Avenue - Dockweiler - \$401,392

This project includes resurfacing Lot 1 & 62nd Avenue and areas in Lot 2 with 2" of new asphalt; improving ADA access, and sealing and restriping both parking lots. New redwood borders will be installed at 62nd Ave. to contain the asphalt.

Status: The project is scheduled to be completed by summer 2014.

Build Concrete Block Wall for Dumpster - Dockweiler RV Park - \$15,000

This project includes adding a new dumpster enclosure to the RV Park. The improvement will assist in keeping the RV Park more sanitary during heavy-use periods.

Status: Final stage of planning.

Connect Water Line to Restroom - Point Dume - \$37,000

This project will complete the water line replacement project from last year and includes tying the new water line into the old connections at each of the three restrooms. A high-grade water system will be used that is designed to last for many years. This improvement

will eliminate the waterline breaks that have occurred during the past few summer seasons.

Status: This project is scheduled to be completed by summer 2014.

Replace Existing Transformer - Dockweiler – \$23,275

The existing transformer is leaking oil and is likely to cause a power failure to the entire rear row of the RV Park. The new transformer was recently received by the contractor and should be installed by April 4th. The expected shut down of the Park should be minimal and not last more than a few hours.

Status: Completed

Roof Repair and Privacy Screen – Avenue C - \$76,000

This project involved replacing the roof of the joint lifeguard station and public restroom building, which resulted in lead and asbestos abatement and the installation of new clay tile. A wood privacy screen was also added to the restroom and a bird walk for the lifeguard's portion of the building to aid them in washing their windows.

Status: This project is 90% complete.

GJ:KF:rw



Caring for Your Coast

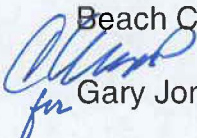
Gary Jones
Acting Director

Kerry Silverstrom
Chief Deputy

John Kelly
Deputy Director

April 17, 2014

TO: Beach Commission

FROM:  Gary Jones, Director

SUBJECT: **AGENDA ITEM 5D – CAPITAL PROJECTS STATUS
REPORT/RELATED ACTIVITIES**

Item 5D on your agenda provides the Commission with a status report on the Department's four beach capital projects and other projects of interest.

CAPITAL PROJECTS

Supervisory District 3

(1)	Will Rogers State Beach - Coastline Drive Development	\$ 9,512,000
(2)	Dan Blocker-West Improvement Project	5,500,000
(3)	Beach Restroom Septic System Replacement Program	13,788,000
(4)	Surfrider Beach Tank Preservation	<u>529,000</u>
TOTAL		\$29,329,000

(1) Will Rogers State Beach – Coastline Drive Development

The project includes: reconstruction of the parking lot; construction of an engineered seawall and slope; removal of the existing wooden pilings to below grade; construction of a view deck and ADA-compliant beach access ramp; and landscaping, irrigation and security lighting improvements.

Status: Construction is ongoing and on schedule. Construction is about 45% complete. Completion expected October 2014.

(2) Dan Blocker Beach-West Improvement Project

The project involves the development of an unimproved westerly portion of this beach site, all of which will be ADA-complaint and includes a small paved parking lot; restrooms; bluff top trail; benches and picnic facilities with protective railings; new perimeter fencing; and bluff top and slope native planting, with minimal irrigation for erosion control.

Status: The Department of Public Works has awarded the construction contract to PUB Construction. Project mobilization and construction expected to commence May 5, 2014. Construction is expected to take nine to ten months.

(3) Beach Restroom Septic System Replacement Program

This program consists of replacing septic systems and leach fields at 16 County operated beach locations in the Topanga and Malibu areas. Each project includes the removal of existing septic pumps and tanks and installation of an advanced treatment septic system, including pumps, tanks, telemetry monitoring system, filter pods, and leach field.

Status: The Department of Public Works continues to work with the City of Malibu to obtain the Coastal Development Permit (CDP). Since the CDP is not expected to be issued until the end of May, DBH and DPW have decided to postpone construction of restrooms No. 2, 7, 8, and 9 until after Labor Day weekend in order to avoid service disruption during the summer season.

(4) Surfrider Beach Tank Preservation

The abandoned saltwater concrete tank was uncovered during the storms of 2004-05. This project is to leave the tank in place on the beach. The tank will be filled with slurry to prevent collapse, sealed, and covered with beach sand.

Status: Construction to start week of April 21. Work expected to be completed by May 22, 2014, before Memorial Day weekend.

OTHER PROJECTS

Zuma Beach Underpass

The Department maintains the Zuma Beach Underpass, an access road that runs under Pacific Coast Highway to the main entrance to Zuma Beach. The sediment in the adjacent creek causes storm runoff to flow onto the road. The project is to remove the sediment in the creek to restore its capacity.

Status: At a site meeting held on March 25, 2014, it was determined that a code violation had been committed by the adjacent property owner. Staff from Fish and Wildlife, City of Malibu, DBH, and Regional Water Quality Control Board are going to set up a meeting with the property owner to discuss abating the violation.

GJ:JK:CM:ce

LOS ANGELES COUNTY BEACH COMMISSION ATTENDANCE REPORT 2014

Commissioner/ Appointed by	Jan.	Feb.	March	April	May	June	July	Sept	Oct	Nov	Total Meetings Attended 2014
Sachs/Ridley-Thomas	X	X	X	X							
Bronowski/Yaroslavsky	X										
Dagit/Yaroslavsky	X		X	X							
Dupont/Yaroslavsky	X	X	X	X							
Jennings/Yaroslavsky	X										
Kruger/Yaroslavsky	X	X	X	X							
Woodell/Yaroslavsky		X	X	X							
Barnes/Knabe		X									
Dougher/Knabe	X	X	X	X							
McCurdy/Knabe	X		X	X							
McDowell/Knabe		X									
Milam/Knabe	X	X	X	X							
O'Donnell/Knabe	*	X	X	X							
Powell/Knabe	X	X	X	X							
Sallee/Knabe	X	X	X	X							
Tucker/Knabe	*	X	X	X							
Ward/Knabe	X	X	X	X							
Vacant/Molina											
Vacant/Yaroslavsky											
Vacant/Knabe											
Vacant/Antonovich											

INACTIVE MEMBERS (Missed three or more meetings in a row)

No regularly scheduled meetings in August or December *=No meeting X=Present Blank=Absent