

Associated Sign

November 13, 2012

Mr. Santos Kreimann, Director.
Attention: Design Control Board

Dear Mr. Kreimann,

This submittal is for one (1) double faced freestanding internally illuminated identification sign; one (1) single faced illuminated entryway sign and three (3) halo illuminated wall signs. The signs will identify the new Hilton Garden Inn located at 4200 Admiralty Way Marina del Rey.

One (1) new 4'-0" tall by 11'-0" wide wall sign consisting of halo illuminated reverse pan letters with polished stainless steel faces mounted to a fabricated aluminum background painted to match the exterior wall where it will be mounted. This sign is proposed to be installed at the corner of Palawan Way and Washington Bl.

One (1) new 2'-8 3/4" tall by 6'-0" wide double faced internally illuminated freestanding monument sign is being proposed to be installed at the corner of Washington Bl. and the alley adjacent to the hotel. The sign will be fabricated from aluminum with pushed thru acrylic letters. The exterior of the sign will have a wood finish.

One (1) set of halo illuminated reverse pan letters with polished stainless steel faces is being proposed to be installed on the wall adjacent to the alley and Admiralty Way. The letters will have an overall height of 4'-3" and an overall width of 18'-0"

One (1) single face illuminated 4'-6" tall by 8'-0" glass sign with a stainless steel base and frame is being proposed to be installed in front of the main entry to the hotel. This proposed sign will have an overall height of 4' - 6" and will have polished stainless steel letters.

One (1) set of halo illuminated reverse pan letters with polished stainless steel faces is being proposed for the curved stucco wall at the corner of Palawan Way and Admiralty Way. The letters will have an overall height of 3'-8 3/4" and an overall width of 15'-9 3/4"

The total cost for the proposed signs is \$40,000. All of the proposed signs will be illuminated from dusk to dawn. Thank you very much for your consideration. Sign shop drawings with exact specifications have been provided for your review and approval.

Regards,

Kevin Berry



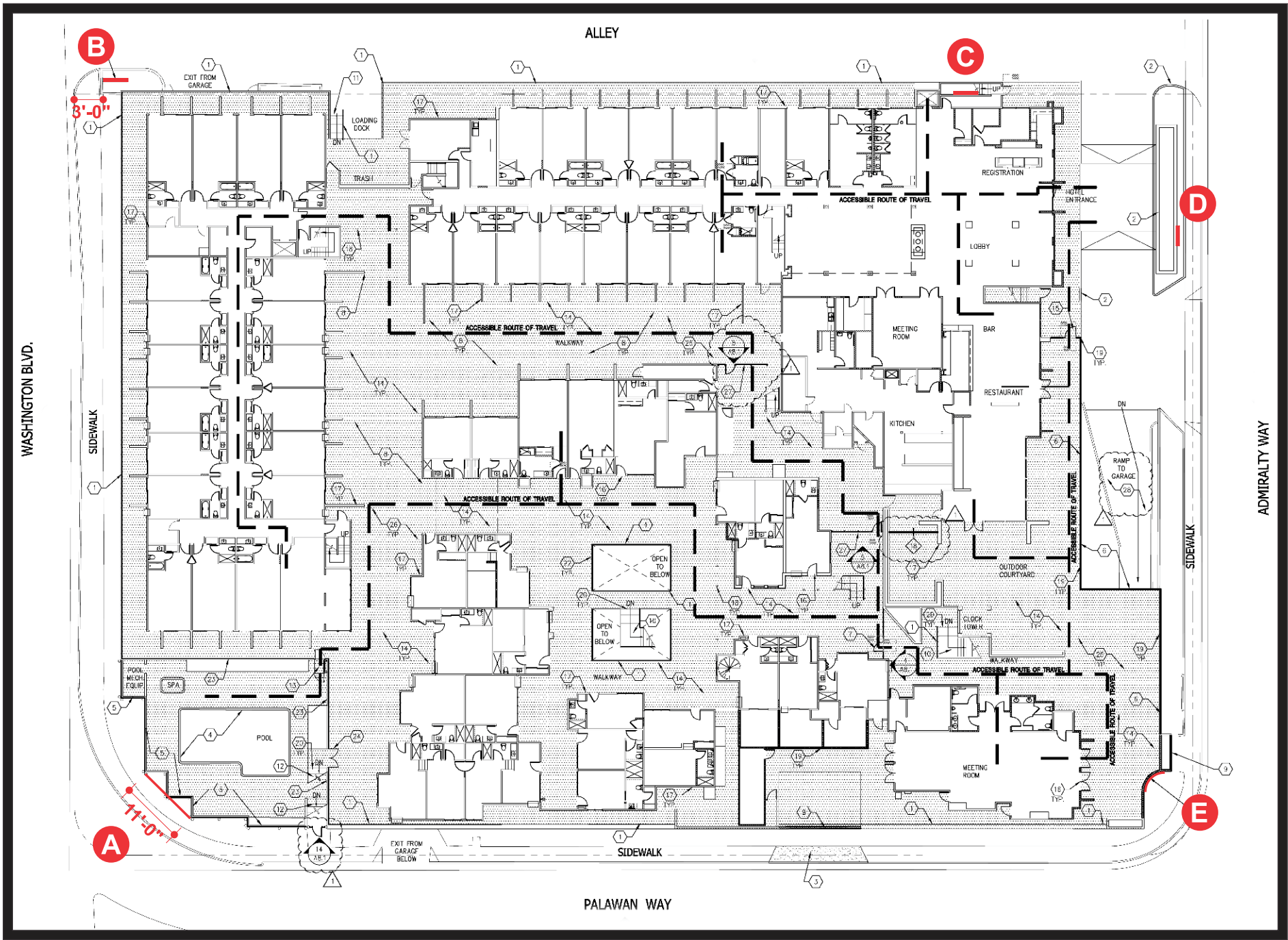
Hilton Garden Inn

4200 ADMIRALTY WAY
MARINA DEL REY, CA

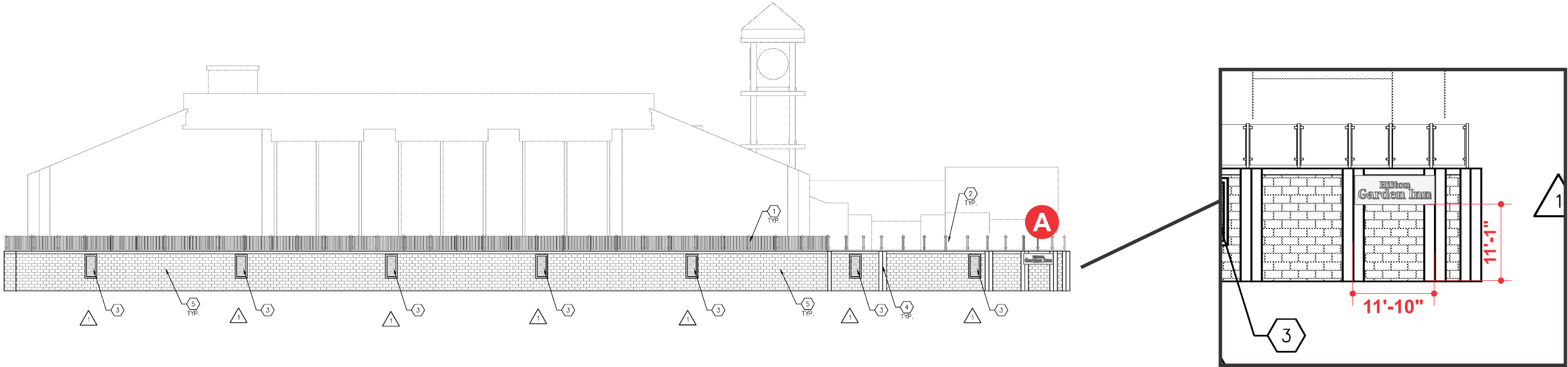
11/18/12

WWW.ASSOCIATESIGN.COM ASSOCIATED SIGN

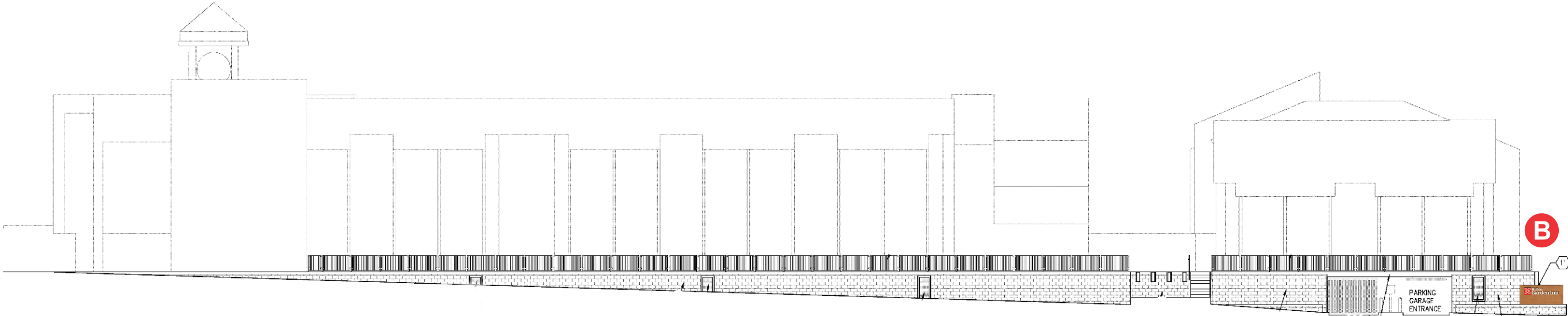




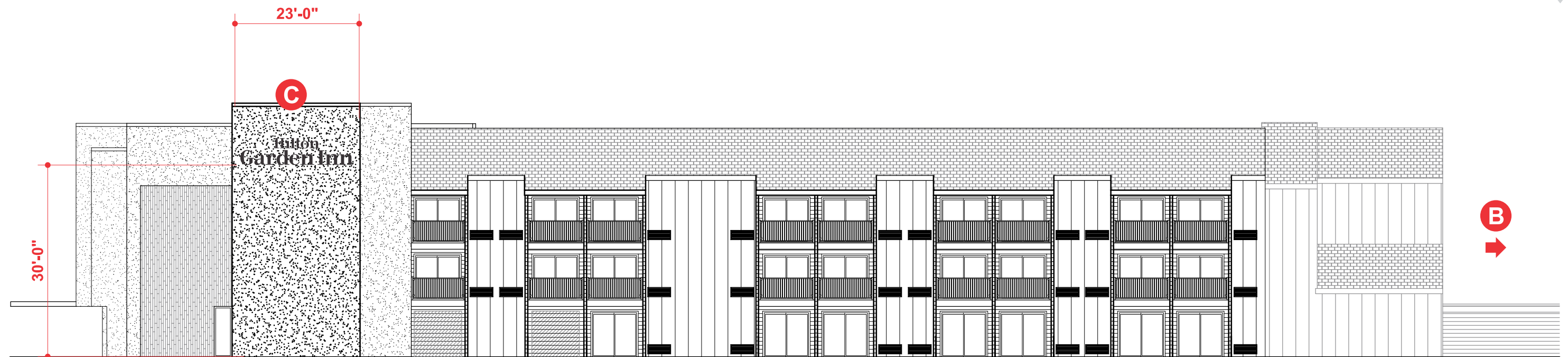
- A** REVERSE PAN CHANNEL LETTERS & FULL SIZE WIREWAY
- B** MONUMENT SIGN
- C** REVERSE PAN CHANNEL LETTERS - ON TOWER
- D** HEDGE WALL SIGN
- E** REVERSE PAN CHANNEL LETTERS - ON A RADIUS WALL



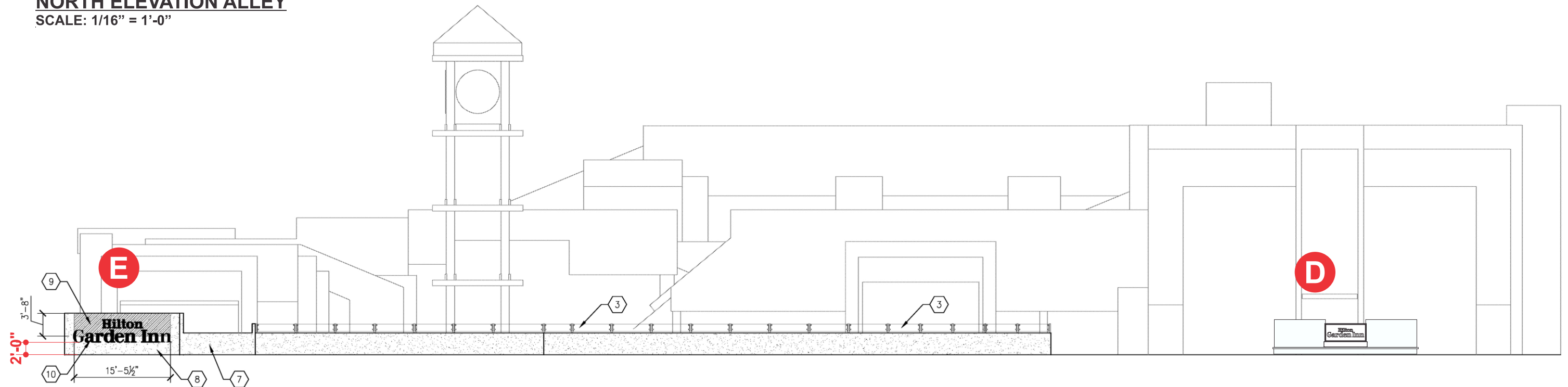
WEST ELEVATION
NTS



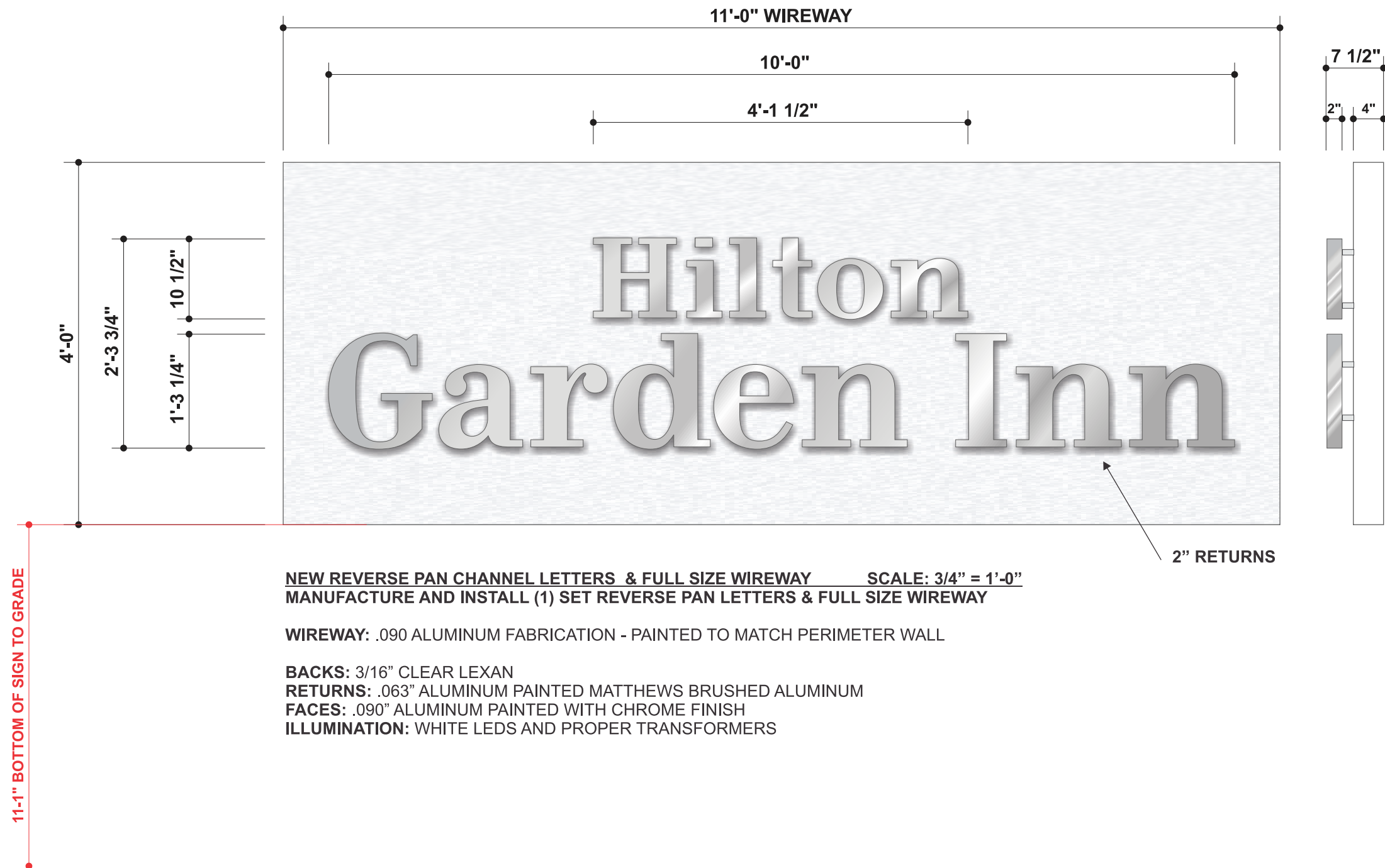
NORTH ELEVATION ALLEY - EXPANDED
SCALE: 1/16" = 1'-0"



NORTH ELEVATION ALLEY
SCALE: 1/16" = 1'-0"



EAST ELEVATION



NEW ILLUMINATED MONUMENT SIGN **SCALE: 1" = 1'-0"**
MANUFACTURE AND INSTALL (1) NEW MONUMENT SIGN

FACES: .125" MILL FINISH ALUMINUM PAINTED PMS 2756C BLUE SATIN FINISH. ROUTED OUT CLEAR ACRYLIC PUSH THROUGH COPY, WITH TRANSLUCENT WHITE VINYL & 3M 3630-73 RED VINYL LOGO APPLIED FIRST SURFACE.

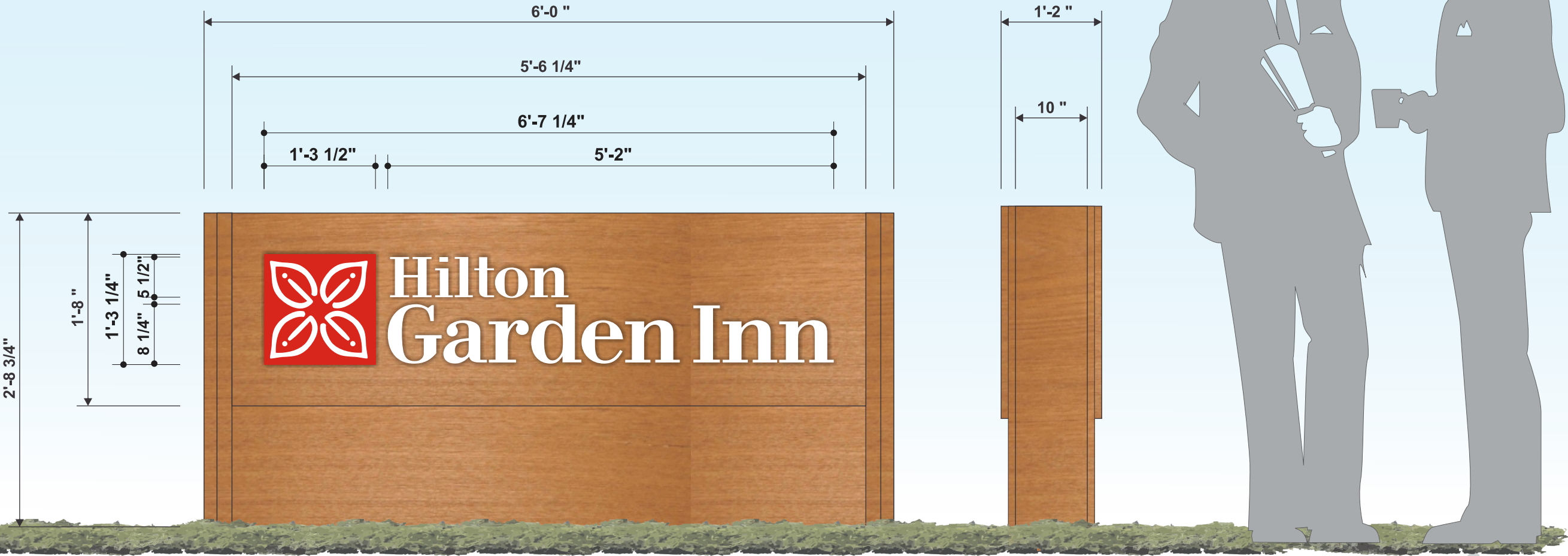
END CAPS: .090" MILL FINISH ALUMINUM, BRAKE-FORMED 3M DI-NOC TEAKWOOD FINISH FILM

BASE: .125" MILL FINISH ALUMINUM WITH 3M DI-NOC TEAKWOOD FINISH FILM

ILLUMINATION: 6500 WHITE FLOURESCENT LAMPS.

PUSH THROUGH COPY: 1/4" ROUTED OUT PUSH THROUGH ACRYLIC W/ VINYL APPLIED FIRST SURFACE.

COLOR SPECIFICATIONS

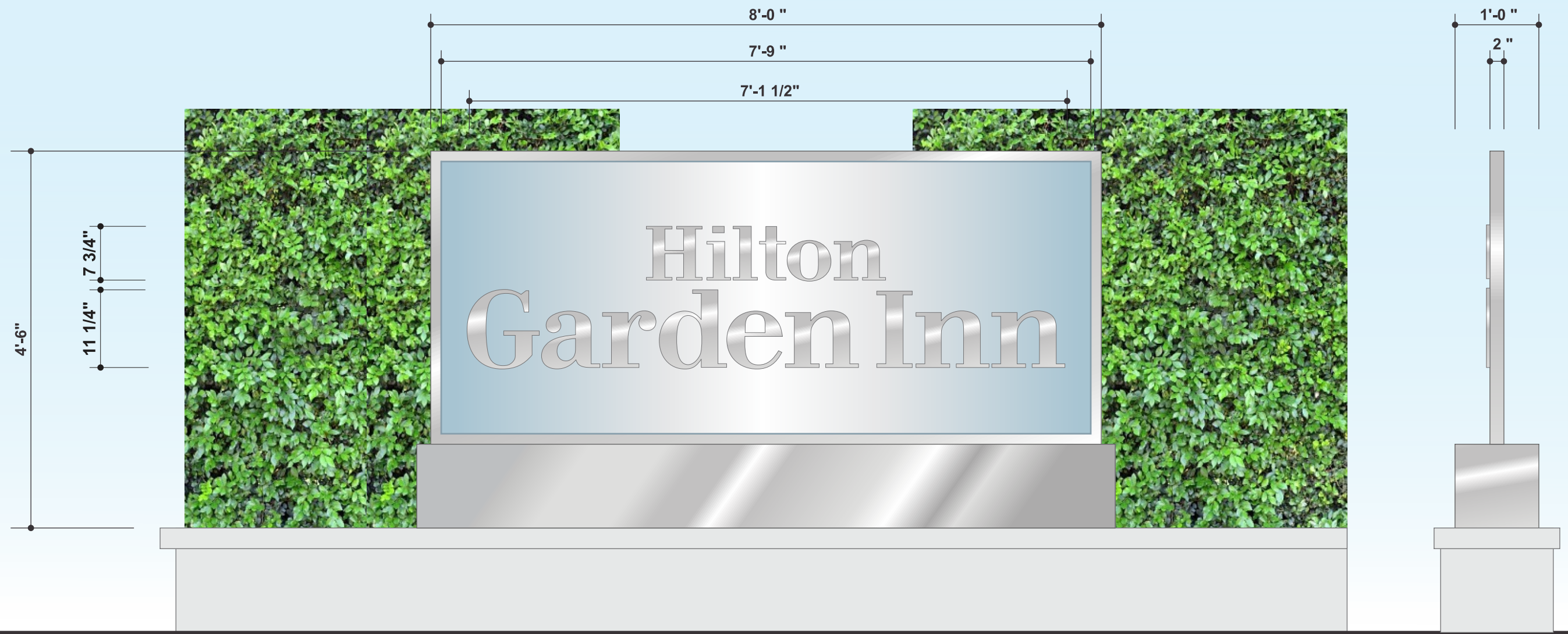




NEW REVERSE PAN CHANNEL LETTERS **SCALE: 3/4" = 1'-0"**
MANUFACTURE AND INSTALL (1) SET REVERSE PAN LETTERS

BACKS: 3/16" CLEAR LEXAN
RETURNS: .063" ALUMINUM PAINTED MATTHEWS BRUSHED ALUMINUM
FACES: .090" ALUMINUM PAINTED WITH CHROME FINISH
ILLUMINATION: WHITE LEDS AND PROPER TRANSFORMERS





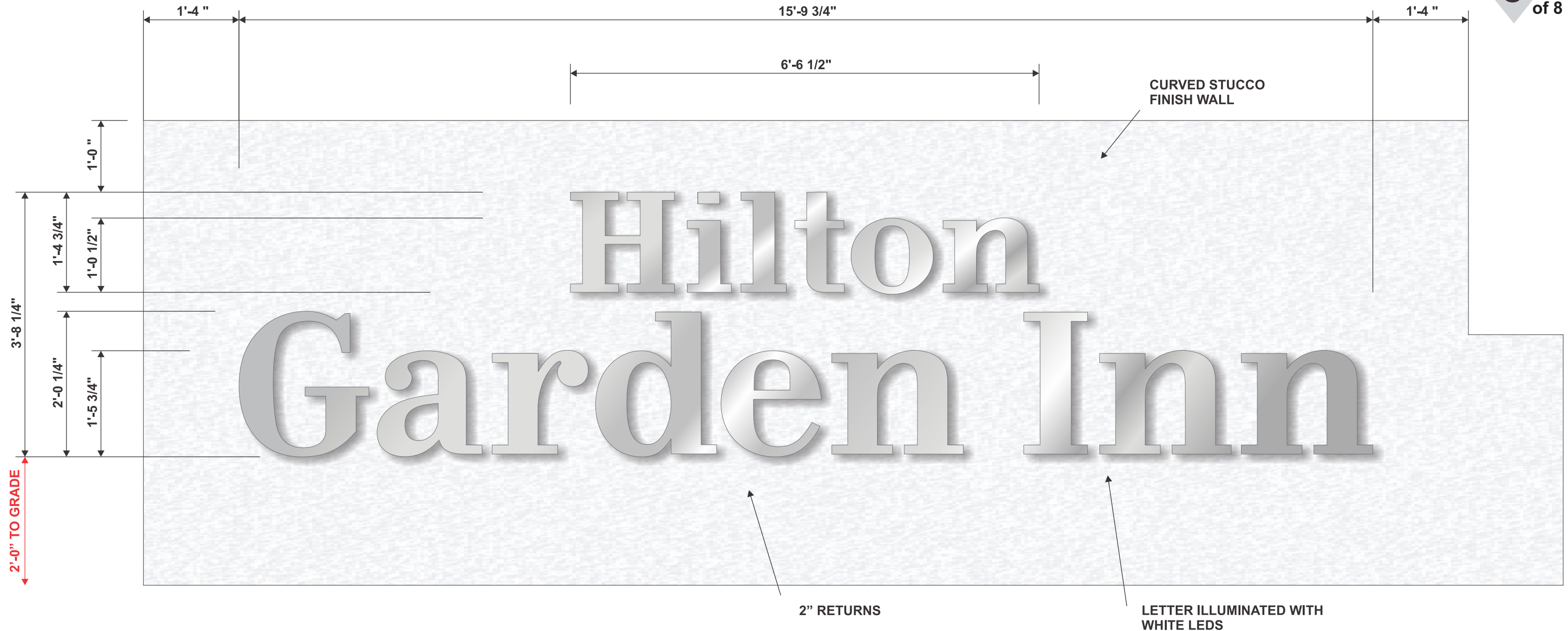
NEW DECORATIVE HEDGE WALL SIGN SCALE: 3/4" = 1'-0"
MANUFACTURE AND INSTALL (1) HEDGE WALL SIGN

ALUMINUM AND STEEL FABRICATION

BACKGROUND: ONE (1) PIECE OF 1/2" THICK TEMPERED GLASS FROSTED WITH STAINLESS STEEL FRAME.

COPY: POLISHED .090" STAINLESS STEEL LOGO AND COPY "HILTON GARDEN INN"

ILLUMINATION: STATIC DAY NIGHT LED ARRAY MOUNTED TO INNER EDGE OF STEEL FRAME - EDGE LIGHTING GLASS. -



NEW REVERSE PAN CHANNEL LETTERS SCALE: 3/4" = 1'-0"
MANUFACTURE AND INSTALL (1) SET REVERSE PAN LETTERS

BACKS: 3/16" CLEAR LEXAN
RETURNS: .063" ALUMINUM PAINTED MATTHEWS BRUSHED ALUMINUM
FACES: .090" ALUMINUM WITH PAINTED CHROME FINISH
ILLUMINATION: WHITE LEDS AND PROPER TRANSFORMERS